



Office of the Monroe County Surveyor  
Trohn Enright-Randolph

Showers Building North  
501 N Morton Street Ste 205  
Bloomington, IN 47404  
Phone: (812) 349-2570  
[surveyoroffice@co.monroe.in.us](mailto:surveyoroffice@co.monroe.in.us)

**AGENDA**  
**SURVEYOR REVIEW BOARD**  
**HYBRID MEETING**  
**Via Zoom App**  
**Tuesday, October 24, 2023**

- I. Call to Order
- II. Approval of agenda
- III. Approval of minutes from September 19, 2023
- IV. New Business
  - a. Office Update
    - i. SRB 2024 Schedule (Draft) Discussion
    - ii. Licensed Surveyor joining Monroe County Surveyor Staff
    - iii. New Service Agreements
- V. Certification of corners:
  - a. Corner Documentation Program: **N/A**
  - b. County Surveyor Perpetuation: **BenNo\_M23\* Tabled 8/22/2023 for TOL, Wash\_O12 Tabled 8/22/2023 for time, Wash\_O13 Tabled 8/22/2023 for time, Wash\_O15 Tabled 8/22/2023 for time, BeBl\_G21\* Tabled 8/22/2023 for time, BeBl\_I21\* Tabled 8/22/2023 for time, BeBl\_I23, BeBl\_K15, BeBl\_K17, BeBl\_M17, BeBl\_U03\***
  - c. Professional Services Agreement: **N/A**
- VI. Public input
- VII. Adoption of next meeting date
- VIII. Adjournment

*\*Has no previous certification*

Zoom Meeting Information

<https://monroecounty-in.zoom.us/j/89463930117?pwd=K3NQS2hCUWNxT3ZqVTliMjZWQWQzUT09>

Webinar ID: 894 6393 0117

Password: 790034

**Dial by your location**+1 312 626 6799 US (Chicago)

**The meeting is open to the public. Dates are subject to change.**

For additional information, please call the Office of the Monroe County Surveyor at (812) 349-2570.

Anyone who requires an auxiliary aid or service for effective communication, or a modification of policies or procedures to participate in a program, service, or activity of Monroe County, should contact Monroe County Title VI Coordinator, (812) 349-2553, as soon as possible but no later than forty-eight (48) hours before the scheduled event.

Individuals requiring special language services should, if possible, Government Title VI Coordinator at least seventy-two (72) hours prior to the date on which the services will be needed.

N:\Meetings\_Boards\_Committees\_&\_Commissions\Monroe\_County\_Surveyor\_Review\_Board\SRB2023\Packets\20231024\Individual Files\MCSRBAgenda\_20231024.docx

Survey Utility



Page 1 of 1

**MEETING MINUTES  
SURVEYOR REVIEW BOARD  
501 N. Morton Ave. Room 211  
HYBRID MEETING  
Via Zoom App  
Tuesday, September 19, 2023**

**MEMBERS PRESENT:** Todd Borgman, Eric Deckard, Rachel Oser

**MEMBERS ABSENT:** None

**STAFF:** Trohn Enright-Randolph, Jason George, Donna Barbrick (Secretary), TSD

- I. Call to Order by Trohn Enright-Randolph**
- II. Approval of agenda. Motion by Rachel Oser; second by Eric Deckard. VOTE: AYE. Motion carried unanimously.**
- III. Approval of minutes from August 22, 2023. Motion by Todd Borgman; second by Rachel Oser. VOTE: AYE. Motion carried unanimously.**
- IV.**
- V. New Business**
  - a. **Office Update.** Trohn talked about moving the office to 501 N. Morton Suite 205. He said MCSO has been busy with budget hearings. He said we will have funds in 2024 for section corner perpetuation projects.
- VI. Certification of corners:**
  - a. **Corner Documentation Program: N/A**
  - b. **County Surveyor Perpetuation: N/A**
  - c. **Professional Services Agreement: InCr\_A03, InCr\_A05, InCr\_A07, InCr\_A09, InCr\_A11, InCr\_A15, InCr\_A19\*, InCr\_C01, InCr\_C03, InCr\_C05, InCr\_C07\*, InCr\_C09, InCr\_C11, InCr\_C19\*, InCr\_E07, InCr\_E09, InCr\_E11, InCr\_E13, InCr\_E15\*, InCr\_E17\*, InCr\_E19, Twicer**

*\*Has no previous certification*

Trohn said we are bringing only service agreement corners today. He said we have a few questions. He asked if there was anything on the survey that Rachel Oser wanted to bring to our attention or were there any previous section corners that you were not able to hold, or any monuments that you had to set with more of a modern method ... those are basically our questions.

Rachel Oser said in Section 6 there was not anything questionable; I held monuments. She said they were straightforward. She said in Section 7 at A07, there is an INDOT section corner monument in concrete. She said some prior records have a stone at this corner, but INDOT records did not say anything about a stone. She said there was a little bit of uncertainty as to whether the Dorman pipe had been next to a stone. She said at C07, that was a monument that I established. She explained why she held a Dorman pipe at a 16<sup>th</sup> corner as better evidence of the line.

She said C09 has what looks like an 1800s legal survey stone. She said Phil Tapp found it in 2009 but since then other surveyors have held the rebar. She said there is some uncertainty there. She said she held the rebar.

She said in Section 8, A11 has been to SRB before. She said I found a BLA rebar 8 inches down and set a mag nail over the top of it. She talked about two railroad spikes in the area, one of them being used for Greene County section corner. She talked about surveyors who held the BLA rebar in recent years. Trohn mentioned that this was held by Kevin Enright in 2011 but tabled by SRB.

Oser said the ones in this survey that already had modern ties, didn't have history before. She said this survey will give more consistency and have the history. She said a lot of Section 19 was not part of the project. She said E15 was a rebar that Bynum Fanyo set but it was just barely in the ground. She said I tied into a bunch of corners from Eric's survey that held that, and calculated a position based on those because the rebar was so funky. She mentioned a cave entrance about 100 feet away. Trohn displayed a perpetuation survey that was done in 2019. He talked about MCSO getting a higher level of standards on our section corners by going through these service agreements. Oser said with E17 there is a Bynum Fanyo rebar and Eric accepted it in 2020 and then in 2021, I noted conflicting monuments because in 2011, Badger had found a stone and in 2021, I had located the stone and the rebar. She said this time I went back to look for the stone; this time there was just a rock lying on the ground. She said I held the rebar set by Doug Curry and held by Eric Deckard. She said E19 was straightforward. She talked about the history of the center of Section 30. She said A19 is an Oser rebar, previously set on the split.

There was a discussion of testing stone to see if it is limestone or sandstone. Trohn went over some of the questions that he and Jason George had and said some of these questions Oser had already addressed. Trohn mentioned a dog being kept by a section corner location. There was a question about a utility pole and its width. Oser addressed other questions about tree species and differences in bearings or distances. Trohn asked about InCr\_E05 and bearings and witnesses. Oser said she checked the bearings to the center of the tree and used two compasses. Trohn said on E11, he wondered about where the MCS cap came from. Oser said she found the rebar and put the cap on it; she said could reword that for clarity when she does edits.

Oser said C01, E05 and E11 need edits and E09 needs one thing checked. **Motion by Deckard to approve InCr\_A03, InCr\_A05, InCr\_A07, InCr\_A09, InCr\_A11, InCr\_A15, InCr\_A19, InCr\_C01, InCr\_C03, InCr\_C05, InCr\_C07, InCr\_C09, InCr\_C11, InCr\_C19, InCr\_E07, InCr\_E09, InCr\_E11, InCr\_E13, InCr\_E15, InCr\_E17, and InCr\_E19, and TwpCor\_V with the conditions of making edits necessary for InCr\_E11, InCr\_E05, In\_C01 and checking the distance on InCr\_C09 Witness B. Second by Borgman. VOTE: Borgman YES; Deckard YES, Oser (RECUSE).**

- VII. Public input-none**
- VIII. Adoption of next meeting date: October 24, 2023.**
- IX. Adjournment. The meeting adjourned at approximately 5:15 pm.**

Approved: \_\_\_\_\_

Secretary \_\_\_\_\_

**(DRAFT) SCHEDULE 2024  
MONROE COUNTY  
SURVEYOR REVIEW BOARD**

**Location:** Monroe County Government-North Showers, 501 N. Morton Street Suite 211,  
Bloomington, IN

**Time:** 4:00-6:00 pm

**Meeting Schedule:**

January 16

February 20

April 16

March 19

May 21

June 18

July 16

August 20

September 17

October 15

November 19

December 17

**The meeting is open to the public. Dates are subject to change.**

For additional information, please call the Office of the Monroe County Surveyor at (812) 349-2570.

Anyone who requires an auxiliary aid or service for effective communication, or a modification of policies or procedures to participate in a program, service, or activity of Monroe County, should contact Monroe County Title VI Coordinator, (812) 349-2553, as soon as possible but no later than forty-eight (48) hours before the scheduled event.

Individuals requiring special language services should, if possible, Government Title VI Coordinator at least seventy-two (72) hours prior to the date on which the services will be needed.

**Survey Utility**



PENDING

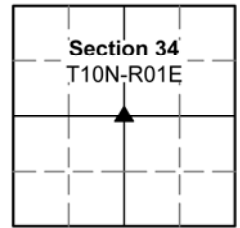
**MONUMENT RECORD**

Corner ID: **BenNo\_M23**

**Center 1/4 Corner**

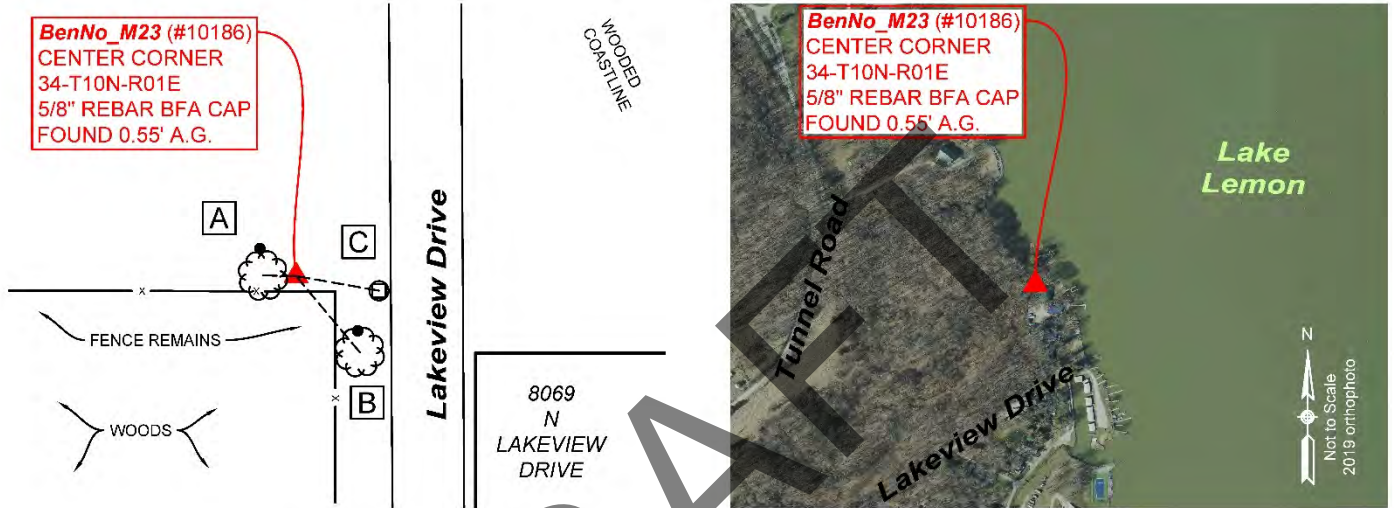
Section 34- T10N-R01E, 2nd P.M.

Benton North Township, Monroe County, Indiana



**MONUMENT:** Describe monument set or found (Include material type, scribing, distance above/below grade, dimensions.)  
 5/8" Rebar with yellow plastic cap stamped, "BYNUM-FANYO 890006" 0.5' above grade.

**MONUMENT LOCATION SKETCH:**



**WITNESS MONUMENT TIES**

All ties to new Bearing Trees (BTs) are a mag nail set in a 1-1/2" plastic washer stamped "SURVEY MARKER - DO NOT REMOVE" and hack mark at the root crown (less than 12" above ground) perpendicular to the center of the tree, unless otherwise noted. BT diameters are noted as dbh and are measured approximately 4.5' above ground. Bearings are measured from the monument to the center of the BT, distances are measured from the monument to the mag nail.

ID	BEARING	DISTANCE	DESCRIPTION
Witness A	N 89d W	5.2'	Mag nail and washer set in hack 0.5' above grade on the north side of a 3" Hickory Tree.
Witness B	S 40d E	15.6'	Mag nail and washer set 0.8' above grade on the north side of a bifurcated 43" White Oak Tree.
Witness C	S 80d E	13.3'	Found 1" Iron Pipe 0.4' above grade.



**OFFICE OF THE MONROE COUNTY SURVEYOR • Trohn Enright-Randolph**

119 W 7th Street, Bloomington, IN 47404 • 812-349-2570 • surveyoroffice@co.monroe.in.us

**PENDING**

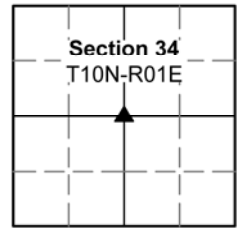
**MONUMENT RECORD**

Corner ID: **BenNo\_M23**

**Center 1/4 Corner**

Section 34- T10N-R01E, 2nd P.M.

Benton North Township, Monroe County, Indiana



**PHOTO IDENTIFIED:** Photo Date: 8/26/2022



Photo Orientation & Description: Looking at BenNo\_M23 from above



Photo Orientation & Description: Looking south at BenNo\_M23

**ORIGINAL OR SUBSEQUENT SURVEY EVIDENCE FOUND:** Include, search area or areas, search procedure, etc.

Date of Field work/Search: 7/9/2021 By: TER, CAR & JMG Monument Found: Rebar with BFA cap BTs or Reference Objects Found: N/A  
 Project #: Plat Review Corners Field Book: 54/33 Equipment: The basis of bearings is Grid North System NAD83(2011)/Indiana West NAVD 88, Epoch 2010.0000, geoid12b\_conus.db3, US Survey Feet, derived from GPS observations utilizing the Indiana Real-Time Network (INCORS). Coordinate data was collected with a Javad Triumph LS Network Rover. Coordinates are available upon request. Distances to witness ties were collected with a Leica Disto laser distance meter and 100' measuring tape. Bearings to witness ties were collected with the internal magnetic compass of the Javad Triumph LS and were automatically adjusted to grid north and are approximately shown hereon for reference. Priority should be given to provided distances over bearings. Notes: All witness photos on file in the Monroe County Surveyors Office.

**OTHER EVIDENCE:** Describe corner location relative to nearby features and how to reach the corner location – note fences, roads, timber cutting lines, mow lines, clearings, plantings, streams, topo changes, etc.

Monument is +/- 10' west of where the remains of a fence coming from the north intersects with a dilapidated fence from west.

**MONUMENT PRESERVATION:** Describe work done to preserve existing monument.

Geodetic controls were captured for the monument. Homeowner across the street from monument was made aware of its existence. "Protect Nearby Survey Marker" sign was set 1' south of rebar 2.55' above grade.

**THEORY OF LOCATION:** Describe the theory of location for acceptance of this monument. Include monument origin and associated uncertainty.

The rebar was set by Licensed Surveyor, Charles D. Graham (LS2950014), while conducting the McClung-Polley Sliding Scale Subdivision on file at the Recorder's Office as 2021020825.IN. Historic research has not yet been performed to prove the validity of this monument.

**CERTIFICATION:**



**OFFICE OF THE MONROE COUNTY SURVEYOR • Trohn Enright-Randolph**

119 W 7th Street, Bloomington, IN 47404 • 812-349-2570 • surveyoroffice@co.monroe.in.us

Page 2 of 2

**PENDING**

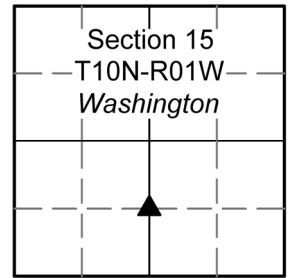
**MONUMENT RECORD**

Corner ID: **Wash\_O12**

**1/16th Corner**

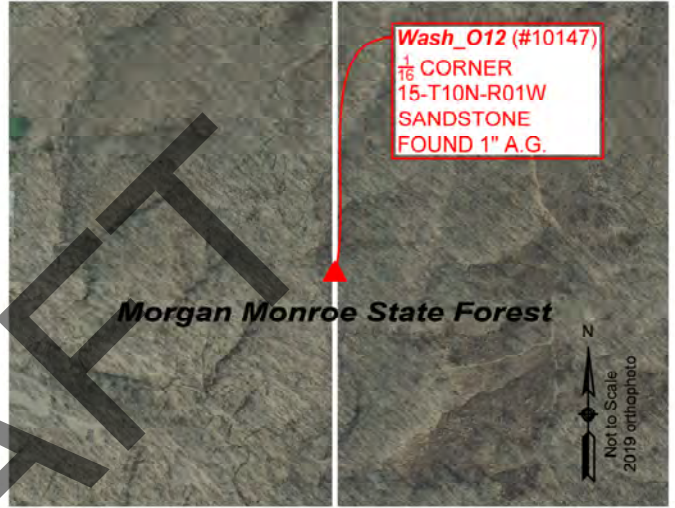
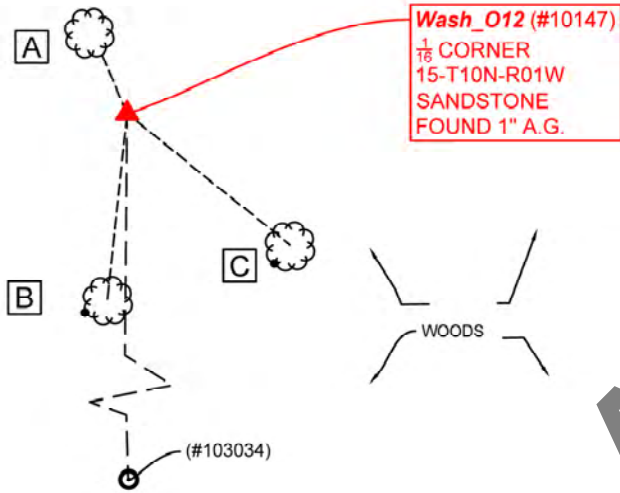
Section 15- T10N-R01W, 2nd P.M.

Washington Township, Monroe County, Indiana



**MONUMENT:** Describe monument set or found (Include material type, scribing, distance above/below grade, dimensions.)  
 5" x 9" Sandstone with cut "X" 1" to 2" above grade.

**MONUMENT LOCATION SKETCH:**



**WITNESS MONUMENT TIES**

All ties to new Bearing Trees (BTs) are a mag nail set in a 1-1/2" plastic washer stamped "SURVEY MARKER - DO NOT REMOVE" and hack mark at the root crown (less than 12" above ground) perpendicular to the center of the tree, unless otherwise noted. BT diameters are noted as dbh and are measured approximately 4.5' above ground. Bearings are measured from the monument to the center of the BT, distances are measured from the monument to the mag nail.

ID	BEARING	DISTANCE	DESCRIPTION
Witness A	N 23d W	6.7'	Found 30" Red Oak Tree as per 1993 monument record.
Witness B	S 6d W	19.6'	Set mag nail and washer in hack on southwest side of 3" American Beech Tree 0.5' above grade.
Witness C	S 51d E	21.9'	Set mag nail and washer in hack on southwest side of 5" American Beech Tree 0.5' above grade.

**MONUMENT ACCESSORIES**

Other survey grade monuments that were located in the vicinity and their relation to the monument.

(#103034)	S 0d8'2" E	668.90'	Found 5/8" rebar with mangled yellow cap 0.5' above grade.
-----------	------------	---------	--



**OFFICE OF THE MONROE COUNTY SURVEYOR • Trohn Enright-Randolph**

119 W 7th Street, Bloomington, IN 47404 • 812-349-2570 • surveyoroffice@co.monroe.in.us

**PENDING**

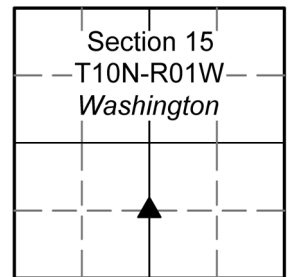
**MONUMENT RECORD**

Corner ID: **Wash\_O12**

**1/16th Corner**

Section 15- T10N-R01W, 2nd P.M.

Washington Township, Monroe County, Indiana



**PHOTO IDENTIFIED:** Photo Date: 9/23/2022



Photo Orientation & Description: Wash\_O12 from above



Photo Orientation & Description: Looking east at Wash\_O12 and Witness A

**ORIGINAL OR SUBSEQUENT SURVEY EVIDENCE FOUND:** *Include, search area or areas, search procedure, etc.*

Date of Field work/Search: 9/23/2022 By: JG & HJ Monument Found: Sandstone BTs or Reference Objects Found: Found Red Oak from 1993 monument record. No sign of Sugar Maple Tree. Trace remnants of Bitternut Hickory stump present. Project #: Washington Monuments Field Book: 55/06 Equipment: The basis of bearings is Grid North System NAD83(2011)/Indiana West NAVD 88, Epoch 2010.0000, geoid12b\_conus.db3, US Survey Feet, derived from GPS observations utilizing the Indiana Real-Time Network (INCORS). Coordinate data was collected with a Javad Triumph LS Network Rover. Coordinates are available upon request. Distances to witness ties were collected with a Leica Disto laser distance meter. Bearings to witness ties were collected with the internal magnetic compass of the Javad Triumph LS and were automatically adjusted to grid north and are approximately shown hereon for reference. Priority should be given to provided distances over bearings. Notes: All witness photos on file in the Monroe County Surveyors Office.

**OTHER EVIDENCE:** *Describe corner location relative to nearby features and how to reach the corner location – note fences, roads, timber cutting lines, mow lines, clearings, plantings, streams, topo changes, etc.*

MOSO staged traverse from 537 Fawn Ridge Trail. At its northeast corner, Wash\_O13 can be found, and an east/west Morgan Monroe Forest dirt utility road is visible just beyond the fence line. However, a direct course from Wash\_O13 to Wash\_O12 is not practical going directly north. Upon encountering elevational and forest growth challenges, one should trek west approximately 500' then follow natural paths northeast. Upon seeing a logging camp, continue trek northeasterly. At a point, one will see the yellow capped rebar that could be known as Wash\_O12.5 or Witness (#103034) herein.

**MONUMENT PRESERVATION:** *Describe work done to preserve existing monument.*

Geodetic controls were captured for monument and Witness (#103034). Stone's acidity was tested. Two other new witnesses were established. New sign was set on existing post northwest and adjacent.

**THEORY OF LOCATION:** *Describe the theory of location for acceptance of this monument. Include monument origin and associated uncertainty.*

The stone was previously witnessed by the Monroe County Surveyor, Michael W. Friley, on November 5, 1993 using observations from Morgan-Monroe State Forest Timber Specialist, Darrell Breedlove, cited on September 18, 1985. Reference on File: a survey by Christopher Porter, Dave Chaudion Minor Subdivision Final Plat Amendment One (2022), on file at the Recorder's Office as 2022008927.IN. Historic research has not yet been performed to prove the validity of this monument.



**OFFICE OF THE MONROE COUNTY SURVEYOR • Trohn Enright-Randolph**

119 W 7th Street, Bloomington, IN 47404 • 812-349-2570 • surveyoroffice@co.monroe.in.us

Page 2 of 3



**PENDING**

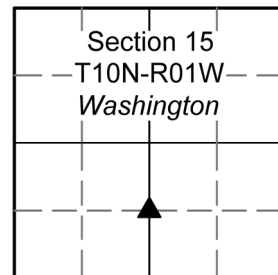
**MONUMENT RECORD**

Corner ID: **Wash\_O12**

**1/16th Corner**

Section 15- T10N-R01W, 2nd P.M.

Washington Township, Monroe County, Indiana



**CERTIFICATION:**

**DRAFT**



**OFFICE OF THE MONROE COUNTY SURVEYOR • Trohn Enright-Randolph**

119 W 7th Street, Bloomington, IN 47404 • 812-349-2570 • [surveyoroffice@co.monroe.in.us](mailto:surveyoroffice@co.monroe.in.us)

Page 3 of 3

# MONUMENT RECORD

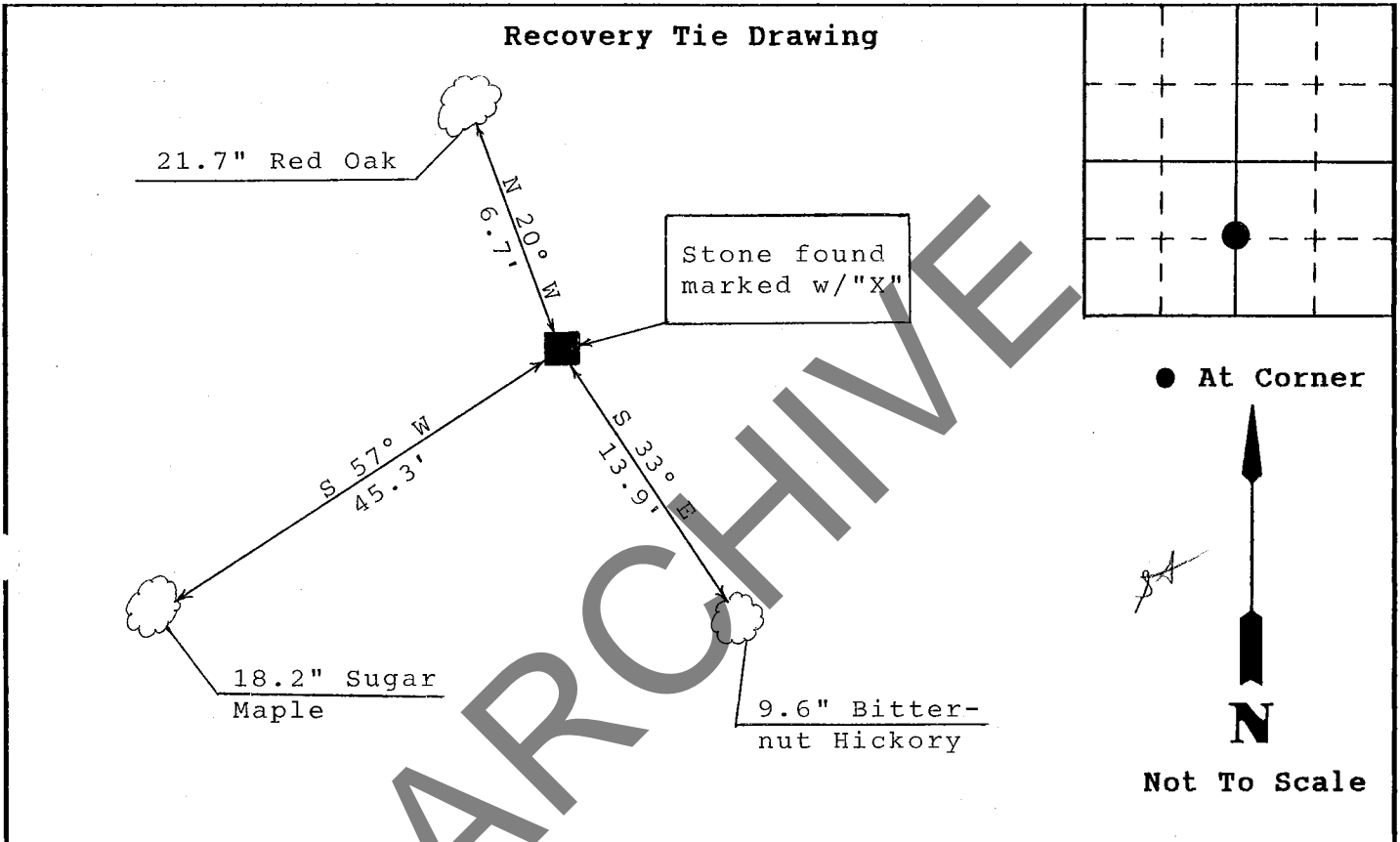
Corner I.D. #

0-12

STATE OF INDIANA - COUNTY OF MONROE

Section Fifteen (15) , Township 10 North , Range 1 West

Monument Description & Remarks: Found Stone at SE Corner of NE 1/4 of SW 1/4. Stone was 5" x 9", 1" exposed, marked with an "X". Corner witnessed 9/18/85.



State of Indiana  
County of Monroe

Space  
Reserved For  
Recording  
Officer

I, Michael W. Friley, County Surveyor , hereby certify that this document was prepared under my direction in accordance with the provisions of Section 17-3-64-4 through 17-3-64-8 of the Indiana Code, being Acts of 1965, Chapter 319; and the above data is given under my hand and seal this 5th day of November , 1993 A.D.

Indiana Registered Land Surveyor No. \_\_\_\_\_ or

Morgan-Monroe State Forest  
United States Government Agency

Darrell Breedlove, Timber Specialist  
Title

Field Book:
<u>n/a</u>
Page:
<u>n/a</u>

M-M

SECTION 15, T 10 N, R 1 W

On June 28, 1984, boundary line work in the section was begun as follows:

- A. -was shown where stone marker was originally located at SE corner of section by Hugh Gorman, 8595 Old 37 N, (adjoining landowner) who claims it had been removed 3-4 years prior to my visit by a surveyor working in SEC 23. A lath was observed east of the hole shown that was marked as SEC 23 corner. See SECTION 22 #1A + {IC BELOW}
- B. -was shown where the NE corner SE $\frac{1}{4}$ , SE $\frac{1}{4}$  is located--old fence wire and a fallen corner post substantiate that the location was correct.
- C. -a compass reference line was run south from a pipe found north of Chamber's Pike at the northeast section corner. At this point, exact measurements have not been made to the evidence found, but the hole where the stone supposedly sat is probably a better fit than the lath for the SE corner of SEC 15.
- D. -a large beech tree with wire pointing in three cardinal directions was found close to the reference line at NE corner of NE $\frac{1}{4}$ , SE $\frac{1}{4}$ .

Darrell Breedlove, Timber Specialist

2. Sept. 18, 1985

-lines painted in west half of section; signs posted at turning corners and  $\frac{1}{4}$ - $\frac{1}{4}$  corners

-pin (set by Vollmer in 70's) found along Chamber's Pike at mid-NE $\frac{1}{4}$ , NW $\frac{1}{4}$  indicates disagreement with fence found near ridge top. This fence surrounds a hay field and closes on mid-point of NW $\frac{1}{4}$ .

-a hexagon marker (set by Vollmer-1985) also found along Chamber's Pike west of before mentioned pin. It's use is to establish north-easterly line along Chamber's Pike.

-two stones were witnessed at:

NW corner of NE $\frac{1}{4}$ , SW $\frac{1}{4}$  (4"(w)x5"(l)x12"(h) with "X" leaning against post)

Azimuth (°)	257 <sup>S77°W</sup>	140 <sup>N4°E</sup>	021
Species	SUM	SUM	SUM
DBH ob (in.)	13.2	20.9	16.9
Distance (ft.)	21.9	36.0	04.7

*Drawn 11-4-93*

SE corner of NE $\frac{1}{4}$ , SW $\frac{1}{4}$  (5"x9"x1" with "X")

Azimuth (°)	340 <sup>N 20° W</sup>	237 <sup>S 51° W</sup>	147 <sup>S 33° E</sup>
Species	REO	SUM	BIH
DBH ob (in.)	21.7	18.2	09.6
Distance (ft.)	06.7	45.3	13.9

-fence surrounds the biggest part of state ownership.

*Darrell Breedlove*

Darrell Breedlove, Timber Specialist

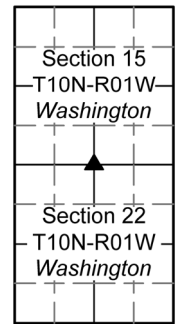
**PENDING**

**MONUMENT RECORD**

Corner ID: **Wash\_O13**

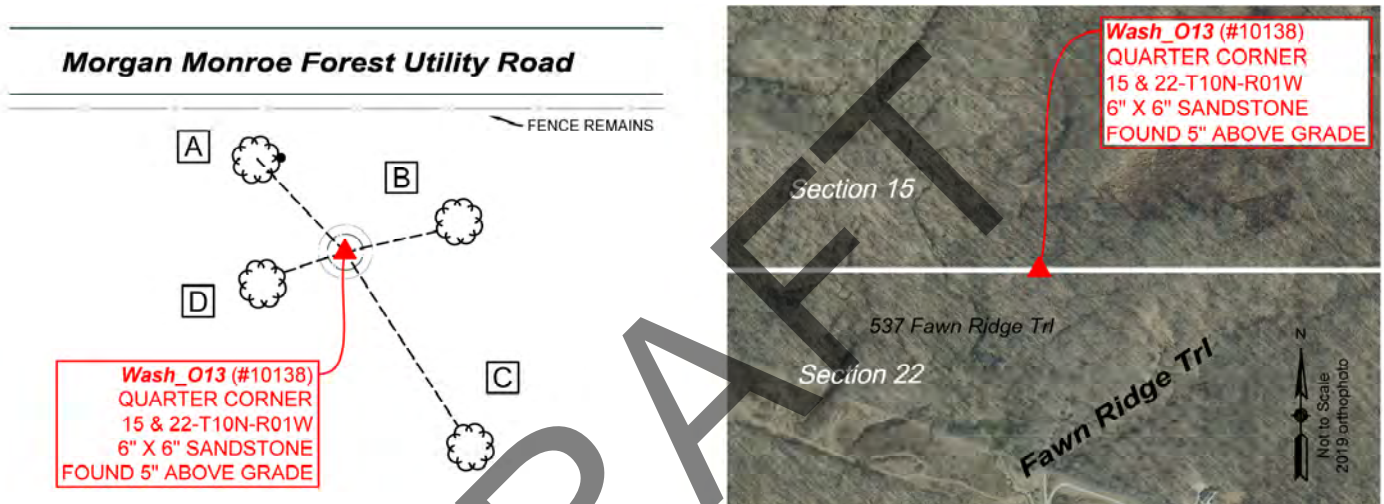
**Quarter Corner**

Sections 15 & 20- T10N-R01W, 2nd P.M.  
Washington Township, Monroe County, Indiana



**MONUMENT:** Describe monument set or found (Include material type, scribing, distance above/below grade, dimensions.)  
Found 6" x 6" dome shaped Sandstone 5" above grade with cut "X" on top near the Morgan Monroe Forest border.

**MONUMENT LOCATION SKETCH:**



**WITNESS MONUMENT TIES**

All ties to new Bearing Trees (BTs) are a mag nail set in a 1-1/2" plastic washer stamped "SURVEY MARKER - DO NOT REMOVE" and hack mark at the root crown (less than 12" above ground) perpendicular to the center of the tree, unless otherwise noted. BT diameters are noted as dbh and are measured approximately 4.5' above ground. Bearings are measured from the monument to the center of the BT, distances are measured from the monument to the mag nail.

ID	BEARING	DISTANCE	DESCRIPTION
Witness A	N 43d W	21.0'	Mag nail set 0.5' above grade on the east side of a 3" American Beech tree.
Witness B	N 77d E	15.5'	Found 14" Pignut Hickory Tree as per 1993 monument record. Bearings and distance collected at center of west side 4.8' above grade.
Witness C	S 33d E	34.0'	Found 17" dead tree, presumably Sugar Maple tree from 1993 monument record. Bearings and distance collected at center of northwest side 7' above grade.
Witness D	S 54d W	10.6'	Found 9" Sugar Maple tree as per 1993 monument record. Bearings and distance collected at center of northeast side 4.7' above grade.



**OFFICE OF THE MONROE COUNTY SURVEYOR • Trohn Enright-Randolph**

119 W 7th Street, Bloomington, IN 47404 • 812-349-2570 • surveyoroffice@co.monroe.in.us

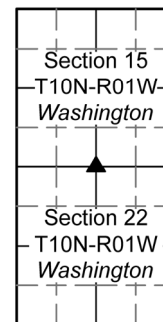
**PENDING**

## MONUMENT RECORD

Corner ID: **Wash\_O13**

**Quarter Corner**

Sections 15 & 20- T10N-R01W, 2nd P.M.  
Washington Township, Monroe County, Indiana



**PHOTO IDENTIFIED:** Photo Date: 09/08/2022



Photo Orientation & Description: Wash\_O13 from above



Photo Orientation & Description: Looking south at Wash\_O13

**ORIGINAL OR SUBSEQUENT SURVEY EVIDENCE FOUND:** Include, search area or areas, search procedure, etc.

Date of Field work/Search: 09/08/2022 By: JG & HJ Monument Found: Sandstone BTs or Reference Objects Found: Found all three witnesses from 1993 monument record Project #: Washington Monuments Field Book: 55/05 Equipment: The basis of bearings is Grid North System NAD83(2011)/Indiana West NAVD 88, Epoch 2010.0000, geoid12b\_conus.db3, US Survey Feet, derived from GPS observations utilizing the Indiana Real-Time Network (INCORS). Coordinate data was collected with a Javad Triumph LS Network Rover. Coordinates are available upon request. Distances to witness ties were collected with a Leica Disto laser distance meter. Bearings to witness ties were collected with the internal magnetic compass of the Javad Triumph LS and were automatically adjusted to grid north and are approximately shown hereon for reference. Priority should be given to provided distances over bearings. Notes: All witness photos on file in the Monroe County Surveyors Office.

**OTHER EVIDENCE:** Describe corner location relative to nearby features and how to reach the corner location – note fences, roads, timber cutting lines, mow lines, clearings, plantings, streams, topo changes, etc.

Monument is at the northeast corner of 537 Fawn Ridge Trail, purportedly bordering the Morgan Monroe Forest. North of the monument there is a forest utility road running east and west. There is a spool of unused barb wire circling the monument. There are several survey flags, poles, lathes and indicators that can be seen from the shed area of the homestead.

**MONUMENT PRESERVATION:** Describe work done to preserve existing monument.

Geodetic controls of the monument were recorded. A new witness was established. The acidity of the stone was tested. "X" was retraced for clarity and functionality. A new "Protect Nearby Survey Markers" sign was hung on an existing T post southwest of the monument, 3.6' above grade and facing north.

**THEORY OF LOCATION:** Describe the theory of location for acceptance of this monument. Include monument origin and associated uncertainty.

The stone was previously witnessed by the Monroe County Surveyor, Michael W. Friley, on November 8, 1993 and co-witnessed by Darrell Breedlove, Timber Specialist with Morgan-Monroe State Forest. It is believed this stone was set in a survey of Section 22 Township 10N Range 01W by George W. Vannoy on September 27 thru 30, 1880 on file at the Surveyor's Office as RSID004924.



**OFFICE OF THE MONROE COUNTY SURVEYOR • Trohn Enright-Randolph**

119 W 7th Street, Bloomington, IN 47404 • 812-349-2570 • surveyoroffice@co.monroe.in.us

Page 2 of 3

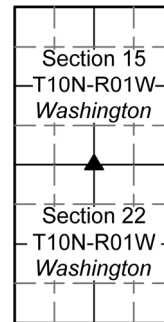
**PENDING**

**MONUMENT RECORD**

Corner ID: **Wash\_O13**

**Quarter Corner**

Sections 15 & 20- T10N-R01W, 2nd P.M.  
Washington Township, Monroe County, Indiana



References on File: Tracy L. McGill survey, Location Control Route Survey Plat Proposed I-69 Section 5 Segment 4 (2013), on file at the Monroe County Recorder's Office as 2013015455.IN and a Christopher Porter survey, Dave Chaudion Minor Subdivision Final Plat Amendment One (2022), on file at the Monroe County Recorder's Office as 2022008927.IN. Historic research has not yet been performed to prove the validity of this monument.

**CERTIFICATION:**

**DRAFT**



**OFFICE OF THE MONROE COUNTY SURVEYOR • Trohn Enright-Randolph**

119 W 7th Street, Bloomington, IN 47404 • 812-349-2570 • surveyoroffice@co.monroe.in.us

Corner I.D. #

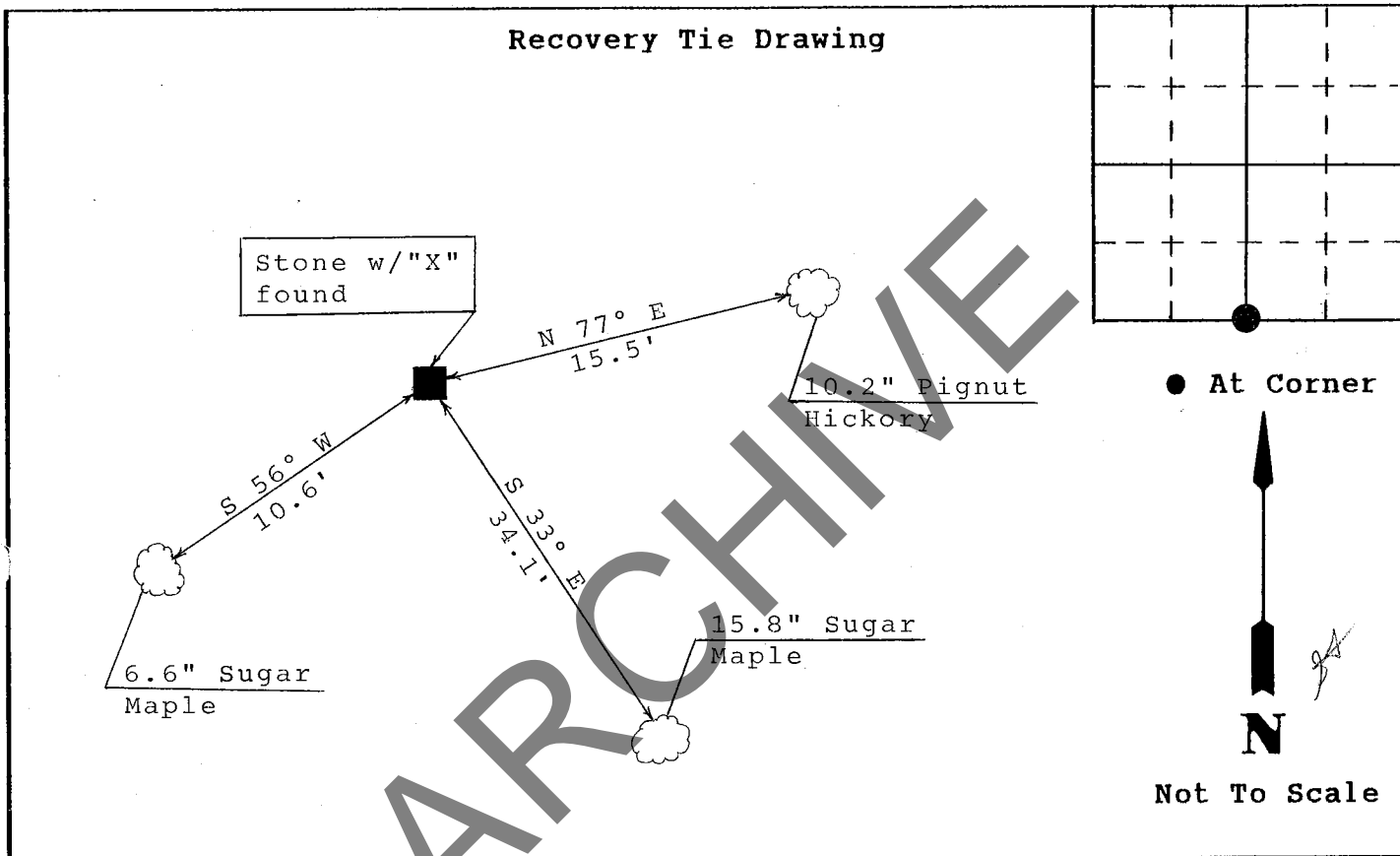
0-13

# MONUMENT RECORD

STATE OF INDIANA - COUNTY OF MONROE

Section Fifteen (15), Township 10 North, Range 1 West

Monument Description & Remarks: Found Stone at SW Corner of E 1/2. Stone was dome shaped, 4" high, marked with an "X". Corner witnessed 10/18/85.



State of Indiana  
County of Monroe

Space Reserved For Recording Officer

I, Michael W. Friley, County Surveyor, hereby certify that this document was prepared under my direction in accordance with the provisions of Section 17-3-64-4 through 17-3-64-8 of the Indiana Code, being Acts of 1965, Chapter 319; and the above data is given under my hand and seal this 8th day of November, 1993 A.D.

Indiana Registered Land Surveyor No. \_\_\_\_\_ or

Morgan-Monroe State Forest  
United States Government Agency

Darrell Breedlove, Timber Specialist  
Title

Field Book:
n/a
Page:
n/a

## (SECTION 15, T 10 N, R 1 W cont.)

M-M

October 18, 1985

-compass reference line flagged June 28, 1984, was used to verify sketchy wire evidence found on east side of section. Hole claimed by Gorman as section corner was accepted based on best fit: a compass azimuth 179° 34' (1° W declination) ran from pin found north of Chamber's Pike at NE section corner would pass close to all evidence found on section line. The hole was witnessed as follows:

SE corner of SEC 15  
 Azimuth (°) 078 132 015  
 Reference (SPP) BLO\* pipe-NW BLO  
 corner  
 Tract 6\*\*

DBH<sub>ob</sub> (in) 14.4 22.0  
 Distance (ft) 29.4 42.6 22.3

\*has witness nails in blazes 2 ft. from ground for lath labeled SEC 23 corner

\*\*subdivision in SEC 23: located 34 ft. south of lath labeled SEC 23 corner (sits right next to BLO\* on NW side of tree) Lee Hutt--surveyor

There appears to be a 29 ft. E-W offset between the SE corner SEC 15 and the NE corner SEC 22 (NW corner SEC 23) This offset was verified by evidence found along NE $\frac{1}{4}$ , NE $\frac{1}{4}$ , SEC 22 E boundary. The E side of E $\frac{1}{2}$ , SE $\frac{1}{4}$ , SEC 15 was painted with orange paint and posted with plastic signs.

-two stones were witnessed as follows:

SW corner E $\frac{1}{2}$  SEC 15--dome shaped--4" high with mark "X"

Azimuth (°) 236 147 077  
 Species SUM SUM PIH  
 DBH<sub>ob</sub> (in) 06.6 15.8 10.2  
 Distance (ft) 10.6 34.1 15.5

\* SE corner W $\frac{1}{2}$ , SE $\frac{1}{4}$  SEC 15 4 $\frac{1}{2}$ "x6 $\frac{1}{2}$ "x7" (LxWxH) with "X"

Azimuth (°) 027 270 196  
 Species SAS BLG YEP  
 DBH<sub>ob</sub> (in) 10.0 08.6 17.9  
 Distance (ft) 20.7 21.1 16.3

next to SUM stub--upper stem was laying on stone which was broken and slightly shifted north by fall--stone was straightened after clearing away debris Note in Reference to "B"?

-the west and south boundaries of SW $\frac{1}{4}$ , SE $\frac{1}{4}$  were painted and posted with plastics signs.

-the SW corner E $\frac{1}{2}$ , NE $\frac{1}{4}$  was established as follows:

=a compass line was run north from SE corner W $\frac{1}{2}$ , SE $\frac{1}{4}$  to the north section line where a fence corner next to a gate behind Gary Fishel's house was found to be due south of a pin line along Chamber's in SEC 10.

*See Sec. 22, and #1A  
 Sec. 15, #1A & 1C  
 Also #4, Sec. 15*



**PENDING**

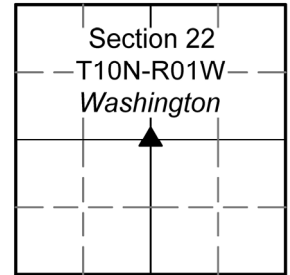
**MONUMENT RECORD**

Corner ID: **Wash\_O15**

**Quarter Corner**

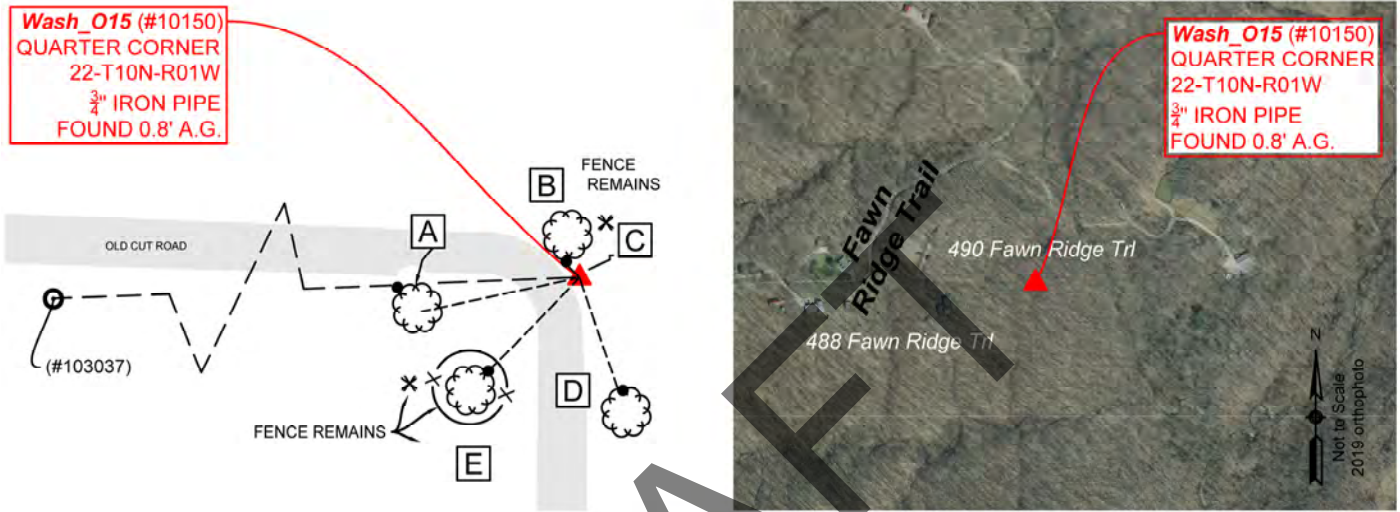
Section 22- T10N-R01W, 2nd P.M.

Washington Township, Monroe County, Indiana



**MONUMENT:** Describe monument set or found (Include material type, scribing, distance above/below grade, dimensions.)  
 3/4" Iron Pipe 0.8' above grade.

**MONUMENT LOCATION SKETCH:**



**WITNESS MONUMENT TIES**

All ties to new Bearing Trees (BTs) are a mag nail set in a 1-1/2" plastic washer stamped "SURVEY MARKER - DO NOT REMOVE" and hack mark at the root crown (less than 12" above ground) perpendicular to the center of the tree, unless otherwise noted. BT diameters are noted as dbh and are measured approximately 4.5' above ground. Bearings are measured from the monument to the center of the BT, distances are measured from the monument to the mag nail.

ID	BEARING	DISTANCE	DESCRIPTION
Witness A	S 78d W	25.22'	Set mag nail and washer in hack on north side of 2" Sugar Maple Tree 0.2' above grade.
Witness B	N 44d W	2.34'	Found mag nail 0.3' above grade on the south side of a 12" Pignut Hickory Tree. Bearings and measurements to mag nail as per 2008 monument record.
Witness C	N 87d E	0.2'	Found "Protect Nearby Survey Markers" sign wired to T post as per 2008 monument record. Set modern sign with conduits 3.1' above grade.
Witness D	S 19d E	18.88'	Found mag nail 0.5' above grade on the north side of a 15" Pignut Hickory Tree. Bearings and measurements to mag nail as per 2008 monument record.
Witness E	S 44d W	20.04'	Found multiple magnetic signals in a 12" Pignut Hickory Tree wrapped in fence remains. Bearings and measurements to strong mag signal as per 2008 monument record.

**MONUMENT ACCESSORIES**

Other survey grade monuments that were located in the vicinity and their relation to the monument.

(#103037)	S 87d46'42" W	232.40'	Found 5/8" rebar with mangled yellow cap 0.7' above grade. Likely, this is the SNA rebar found in the 2008 monument record.
-----------	---------------	---------	---



**OFFICE OF THE MONROE COUNTY SURVEYOR • Trohn Enright-Randolph**

119 W 7th Street, Bloomington, IN 47404 • 812-349-2570 • surveyoroffice@co.monroe.in.us

**PENDING**

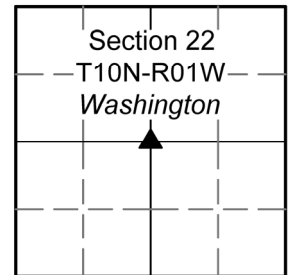
**MONUMENT RECORD**

Corner ID: **Wash\_O15**

**Quarter Corner**

Section 22- T10N-R01W, 2nd P.M.

Washington Township, Monroe County, Indiana



**PHOTO IDENTIFIED:** Photo Date: 09/23/2022



Photo Orientation & Description: Looking at Wash\_O15 from above



Photo Orientation & Description: Looking north at Wash\_O15

**ORIGINAL OR SUBSEQUENT SURVEY EVIDENCE FOUND:** Include, search area or areas, search procedure, etc.

Date of Field work/Search: 09/23/2022 By: HJ & JG Monument Found: Iron Pipe BTs or Reference Objects Found: Found Witnesses B, C, D & E and possibly the rebar on previous record, all from 2008 monument record Project #: Washington Monuments Field Book: 55/08 Equipment: The basis of bearings is Grid North System NAD83(2011)/Indiana West NAVD 88, Epoch 2010.0000, geoid12b\_conus.db3, US Survey Feet, derived from GPS observations utilizing the Indiana Real-Time Network (INCORS). Coordinate data was collected with a Javad Triumph LS Network Rover. Coordinates are available upon request. Distances to witness ties were collected with 100' measuring tape. Bearings to witness ties were collected with the internal magnetic compass of the Javad Triumph LS and were automatically adjusted to grid north and are approximately shown hereon for reference. Priority should be given to provided distances over bearings. Notes: All witness photos on file in the Monroe County Surveyors Office.

**OTHER EVIDENCE:** Describe corner location relative to nearby features and how to reach the corner location – note fences, roads, timber cutting lines, mow lines, clearings, plantings, streams, topo changes, etc.

The monument is at the northeast corner of an access easement that begins at Fawn Ridge Trail and continues east, down a steep hill, and along the southern border of 490 Fawn Ridge Trail homestead. At the point the easement traverses southerly, the monument can be seen at the north corner. At one point, this easement was a lane that connected Old Highway 37 to a cemetery that was moved upon the construction of New Highway 37.

**MONUMENT PRESERVATION:** Describe work done to preserve existing monument.

Geodetic coordinates were recorded for the monument and the witness (#103037). A new sign was set.

**THEORY OF LOCATION:** Describe the theory of location for acceptance of this monument. Include monument origin and associated uncertainty.

The iron pipe was previously witnessed by the Monroe County Surveyor, Kevin Enright, on April 28, 2008 and accepted by the Monroe County Surveyor Review Board on June 10, 2008. The 2008 Monument Record accepted the iron pipe per a boundary survey by Mike Mundy, Frank Thomas & Clara Mae Farnsley (1991), recorded as Instrument Number 00116203.IN and a survey by James D. Smale, Chaney (2006), on file at the Surveyor's Office as RSID004957. It is believed that the iron pipe was set by Guy Moore in performance of a survey for Patel recorded along with the warranty deed as Instrument Number 19888093840.IN. Other References on File: Tracy L. McGill survey, Location Control Route Survey Plat Proposed I-69 Section 5 Segment 4 (2013), on file at the Recorder's Office as 2013015455.IN and an Andrew Wilken survey, Dewster Boundary Survey (2019) on file at the Recorder's Office as 2019003145.IN. Historic research has not yet been performed to prove the validity of this monument.



**OFFICE OF THE MONROE COUNTY SURVEYOR • Trohn Enright-Randolph**

119 W 7th Street, Bloomington, IN 47404 • 812-349-2570 • surveyoroffice@co.monroe.in.us

Page 2 of 3

**PENDING**

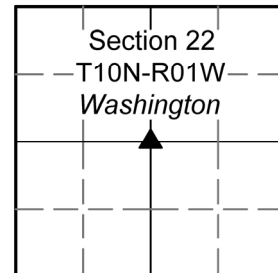
**MONUMENT RECORD**

Corner ID: **Wash\_O15**

**Quarter Corner**

Section 22- T10N-R01W, 2nd P.M.

Washington Township, Monroe County, Indiana



**CERTIFICATION:**

**DRAFT**



**OFFICE OF THE MONROE COUNTY SURVEYOR • Trohn Enright-Randolph**

119 W 7th Street, Bloomington, IN 47404 • 812-349-2570 • [surveyoroffice@co.monroe.in.us](mailto:surveyoroffice@co.monroe.in.us)

MONUMENT RECORD  
State of Indiana - County of Monroe

Section: 22

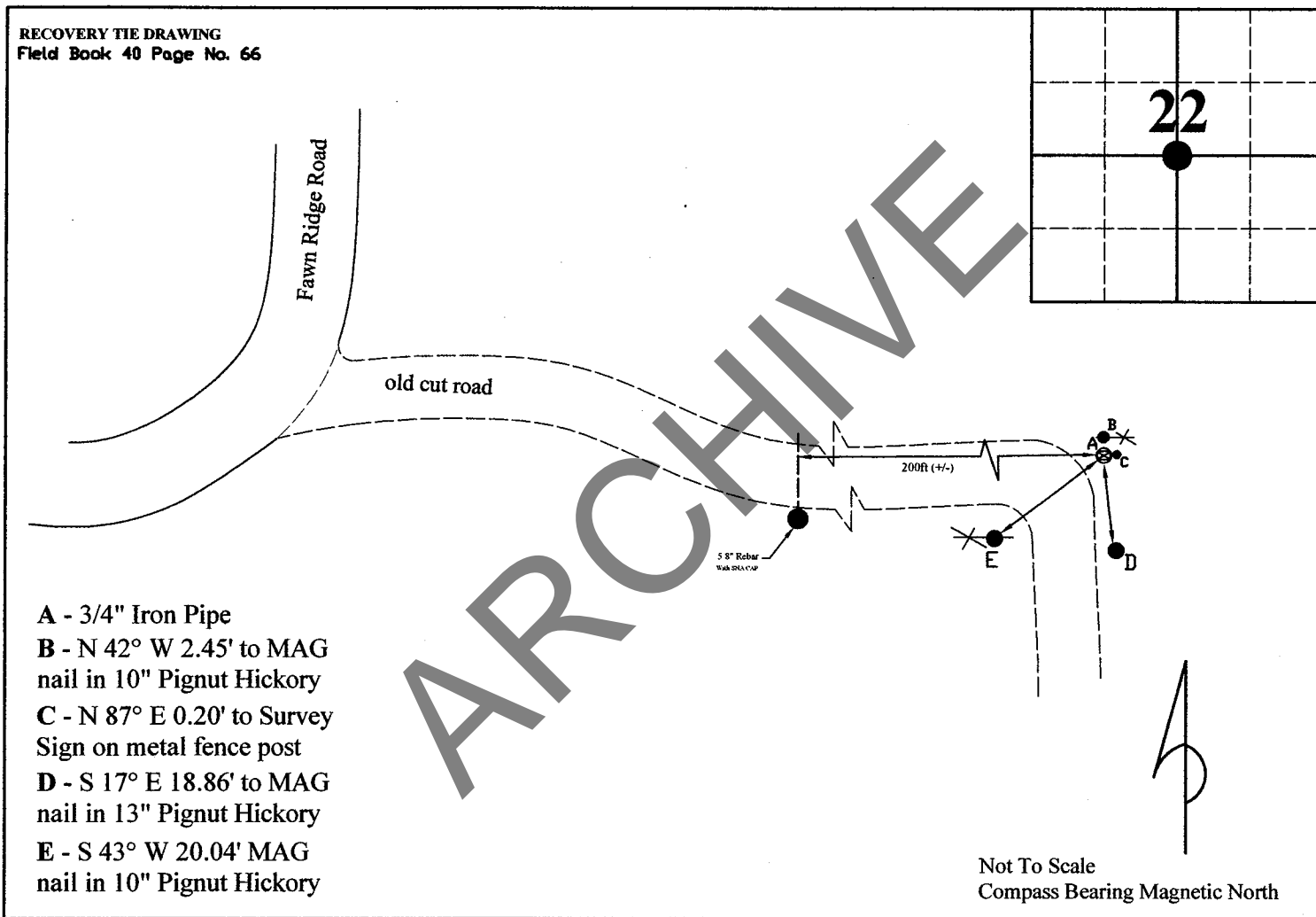
Township: 10 North

Range: 1 West

Corner ID: Wash O-15

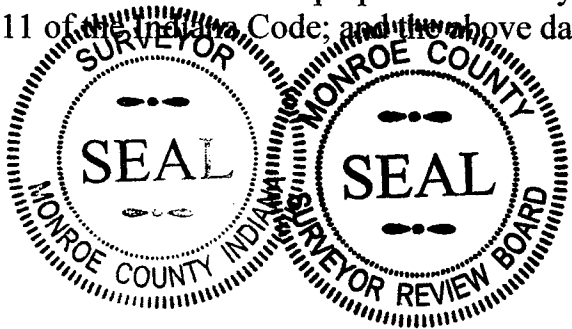
**Monument Description & Remarks:** 3/4" Iron Pipe 6" above ground. Survey Sign 3.5' above ground at pt. C

**References On File:** Mike Mundy survey, Frank Thomas & Clara Mae Farnsley (1991), on file in Auditor Office & James D. Smale survey, Chaney (2006), on file in Surveyor Office



I, Kevin P. Enright, Monroe County Surveyor, hereby certify that this document was prepared under my direction in accordance with the provisions of section 36-2-12-11 of the Indiana Code; and the above data is given under my hand and seal this 28th day of April, 2008.

*Kevin P. Enright*



Administered by the Monroe County Surveyor Review Board

Date: 6-10-2008

Drawn by: T.E.R. Print date: May 1, 2008

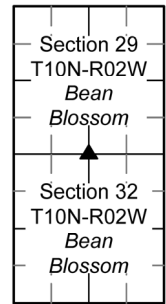
**PENDING**

**MONUMENT RECORD**

Corner ID: **BeBI\_G21**

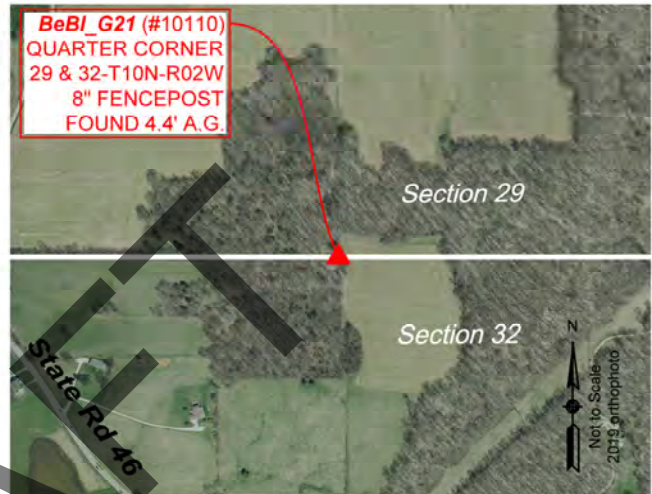
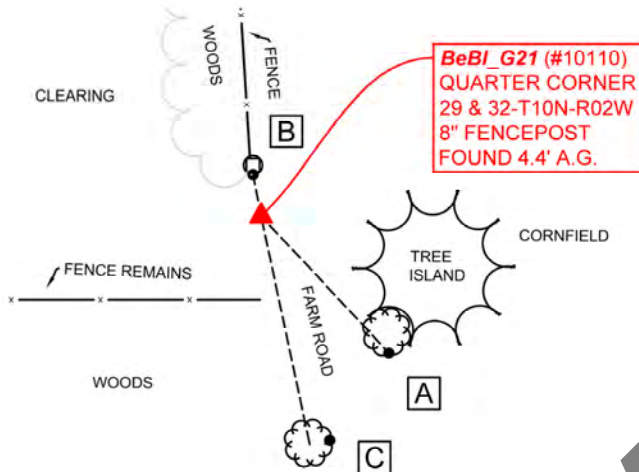
**Quarter Corner**

Sections 29 & 32- T10N-R02W, 2nd P.M.  
 Bean Blossom Township, Monroe County, Indiana



**MONUMENT:** Describe monument set or found (Include material type, scribing, distance above/below grade, dimensions.)  
 8" Fence Post 4.4' above grade

**MONUMENT LOCATION SKETCH:**



**WITNESS MONUMENT TIES**

All ties to new Bearing Trees (BTs) are a mag nail set in a 1-1/2" plastic washer stamped "SURVEY MARKER - DO NOT REMOVE" and hack mark at the root crown (less than 12" above ground) perpendicular to the center of the tree, unless otherwise noted. BT diameters are noted as dbh and are measured approximately 4.5' above ground. Bearings are measured from the monument to the center of the BT, distances are measured from the monument to the mag nail.

ID	BEARING	DISTANCE	DESCRIPTION
Witness A	S 43d E	30.2'	Mag nail and washer set in hack 6" above grade on the south side of a 6" Ash Tree.
Witness B	N 11d W	6.9'	Mag nail set 4.3' above grade on the south side of an 8" fence post.
Witness C	S 12d E	37.8'	Mag nail and washer set in hack 8" above grade on the east side of a 15" Black Walnut Tree.



**OFFICE OF THE MONROE COUNTY SURVEYOR • Trohn Enright-Randolph**

119 W 7th Street, Bloomington, IN 47404 • 812-349-2570 • surveyoroffice@co.monroe.in.us

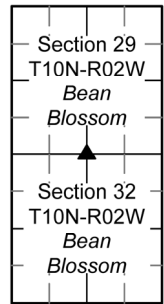
**PENDING**

**MONUMENT RECORD**

Corner ID: **BeBI\_G21**

**Quarter Corner**

Sections 29 & 32- T10N-R02W, 2nd P.M.  
Bean Blossom Township, Monroe County, Indiana



**PHOTO IDENTIFIED:** Photo Date: 10/07/2022



Photo Orientation & Description: Looking north at BeBI\_G21



Photo Orientation & Description: Looking east at BeBI\_G21

**ORIGINAL OR SUBSEQUENT SURVEY EVIDENCE FOUND:** Include, search area or areas, search procedure, etc.

Date of Field work/Search: 10/07/2022 By: HJ & JG Monument Found: Fence Post BTs or Reference Objects Found: None Project #: Bean Blossom Stones Field Book: 55/09 Equipment: The basis of bearings is Grid North System NAD83(2011)/Indiana West NAVD 88, Epoch 2010.0000, geoid12b\_conus.db3, US Survey Feet, derived from GPS observations utilizing the Indiana Real-Time Network (INCORS). Coordinate data was collected with a Javad Triumph LS Network Rover. Coordinates are available upon request. Distances to witness ties were collected with a 100' measuring tape. Bearings to witness ties were collected with the internal magnetic compass of the Javad Triumph LS and were automatically adjusted to grid north and are approximately shown hereon for reference. Priority should be given to provided distances over bearings. Notes: All witness photos on file in the Monroe County Surveyors Office.

**OTHER EVIDENCE:** Describe corner location relative to nearby features and how to reach the corner location – note fences, roads, timber cutting lines, mow lines, clearings, plantings, streams, topo changes, etc.

Monument is located west of a cornfield where two farm roads intersect; one coming from the south (8696 W State Rd 46) and the other farm road traversing from the west where W State Rd 46 and Stinesville Road intersect. The monument is the southernmost post where a longstanding fence from the north terminates.

**MONUMENT PRESERVATION:** Describe work done to preserve existing monument.

“Protect Nearby Survey Markers” sign was set on southeast side of monument at 4’ above grade. Geodetic controls were captured for the monument along with a 4”x6” stone 5” above grade and a flush David Meier blue-capped 5/8” rebar that mark the northeast and southeast corners of 8988 W State Rd 46 respectively as those parcel corners were determined in 2022.

**THEORY OF LOCATION:** Describe the theory of location for acceptance of this monument. Include monument origin and associated uncertainty.

The fencepost was held by Licensed Surveyor, David R. Meier (LS 20800130), while performing a boundary survey for Marian Arnett (2022) on file at the Surveyor’s Office as RSID005099. Despite a series of deeds for 8696 W State Rd 46 (1987210096.IN & 00321081.IN on file at the Recorder’s Office) referencing an iron pin as the monument, Mr. Meier stated the fencepost best represented BeBI\_G21. Efforts were taken by both Mr. Meier and the MOCO Surveyor’s Office on separate occasions to sweep for iron pin, but it was not found. One other Reference on File: a survey by Eric L. Deckard, Arnett Type “E” Administrative Subdivision (2023), on file at the Recorder’s Office as 2023001235.IN. Historic research has not yet been performed to prove the validity of this monument.



**OFFICE OF THE MONROE COUNTY SURVEYOR • Trohn Enright-Randolph**

119 W 7th Street, Bloomington, IN 47404 • 812-349-2570 • surveyoroffice@co.monroe.in.us

Page 2 of 3

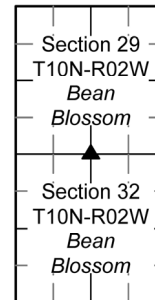
**PENDING**

**MONUMENT RECORD**

Corner ID: **BeBI\_G21**

**Quarter Corner**

Sections 29 & 32- T10N-R02W, 2nd P.M.  
Bean Blossom Township, Monroe County, Indiana



**CERTIFICATION:**

**DRAFT**



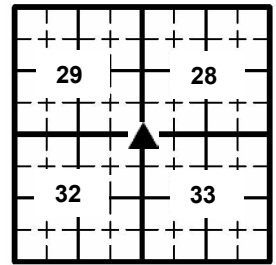
**PENDING**

**MONUMENT RECORD**

Corner ID: **BeBI\_I21**

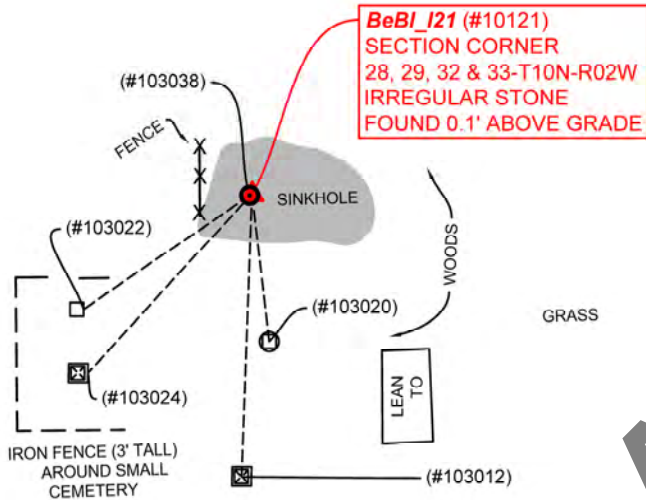
**Section Corner**

Sections 28, 29, 32 & 33- T10N-R02W, 2nd P.M.  
 Bean Blossom Township, Monroe County, Indiana



**MONUMENT:** Describe monument set or found (Include material type, scribing, distance above/below grade, dimensions.)  
 Irregular, dome shaped stone, 6" x 15", with "L" shape on top, 0.1' above grade west side of sinkhole.

**MONUMENT LOCATION SKETCH:** -



**MONUMENT ACCESSORIES**

Other survey grade monuments that were located in the vicinity and their relation to the monument. Geodetic coordinates in this table are provided in the format Easting, Northing.

(#103020)	S 6d41'19" E	38.61'	Found 3/4" crimped iron pipe 0.3' above grade.
(#103022)	S 55d30'18" W	53.11'	6" x 12" flat stone in small cemetery, no markings, measured at center of east side, flush to grade.
(#103024)	S 42d29'20" W	63.19'	Burial marker, 16" x 14" base, 10" x 6" base of obelisk, measured at grade at center of east side.
(#103012)	S 2d5'25" W	73.66'	Found 4" x 4" limestone post, 1' above grade.
(#103038)	S 57d8'3" W	0.71'	Found 5/8" rebar with yellow cap reading, "TE JONES LS 20300006" 0.3' above grade.



**OFFICE OF THE MONROE COUNTY SURVEYOR • Trohn Enright-Randolph**

119 W 7th Street, Bloomington, IN 47404 • 812-349-2570 • surveyoroffice@co.monroe.in.us

Page 1 of 3



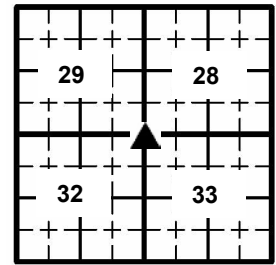
**PENDING**

## MONUMENT RECORD

Corner ID: **BeBI\_I21**

### Section Corner

Sections 28, 29, 32 & 33- T10N-R02W, 2nd P.M.  
Bean Blossom Township, Monroe County, Indiana



**PHOTO IDENTIFIED:** *Photo Date:* 01/27/2023



*Photo Orientation & Description:* Looking at BeBI\_I21 from above and highlighting "L" shape



*Photo Orientation & Description:* Looking west at BeBI\_I21

**ORIGINAL OR SUBSEQUENT SURVEY EVIDENCE FOUND:** *Include, search area or areas, search procedure, etc.*

*Date of Field work/Search:* 10/28/2022 & 1/27/2023 *By:* JG & HJ *Monument Found:* Stone *BTs or Reference Objects Found:* None  
*Project #:* Bean Blossom Stones *Field Book:* 55/19 *Equipment:* The basis of bearings is Grid North System NAD83(2011)/Indiana West NAVD 88, Epoch 2010.0000, geoid12b\_conus.db3, US Survey Feet, derived from GPS observations utilizing the Indiana Real-Time Network (INCORS). Coordinate data was collected with a Javad Triumph LS Network Rover. Coordinates are available upon request. Priority should be given to provided distances over bearings. *Notes:* All witness photos on file in the Monroe County Surveyors Office.

**OTHER EVIDENCE:** *Describe corner location relative to nearby features and how to reach the corner location – note fences, roads, timber cutting lines, mow lines, clearings, plantings, streams, topo changes, etc.*

Monument on west side of sinkhole, +/- 12' east of a +/-13' stretch of taught fence that runs through two trees. Monument can be accessed from 7609 Rodeo Drive or 8260 Chafin Chapel Road. There is a small cemetery southwest of monument with an iron fence around three sides of it.

**MONUMENT PRESERVATION:** *Describe work done to preserve existing monument.*

Geodetic controls were captured for the monument and all witnesses or monument accessories herein. A "Protect Nearby Survey Marker" sign was set 2' west of monument at 2.5' above grade. Property owner on east side of property was made aware of monument's existence. Acidity of stone was tested (negative).

**THEORY OF LOCATION:** *Describe the theory of location for acceptance of this monument. Include monument origin and associated uncertainty.*

References on File Holding Stone as BeBI\_I21: A surveyor's report by Timothy E. Jones, Benjamin Egnatz (2006), on file at the Recorder's Office as 2007006241.IN. A survey by James Smale, Rodeo Drive Boundary (2007), on file at the Surveyor's Office as RSID004704. Mr. Smale references the stone that is held in the Jones survey. One other reference on file, a survey by Eric L. Deckard, The Wallace Spencer Boundary Survey (2014), on file at the Recorder's Office as 2014012855.IN. Mr. Deckard references the stone that is held in the Smale survey.

There are two references on file that hold the crimped iron pipe (included in this report as a witness, monument accessory #103020) as the corner: a Raymond Graham survey, Summit Minor Subdivision (2000), on file at the Recorder's Office as 200006262.IN and an Eric L. Deckard survey, The People's State Bank Boundary Survey (2010), on file at the Recorder's Office as 2010007913.IN. Historic research has not yet been performed to prove the validity of this monument.



**OFFICE OF THE MONROE COUNTY SURVEYOR • Trohn Enright-Randolph**

119 W 7th Street, Bloomington, IN 47404 • 812-349-2570 • surveyorsoffice@co.monroe.in.us

Page 2 of 3

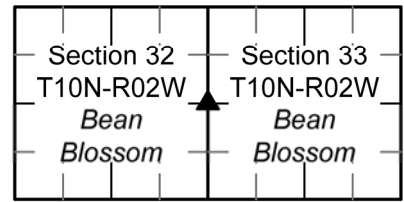
**PENDING**

**MONUMENT RECORD**

Corner ID: **BeBI\_I23**

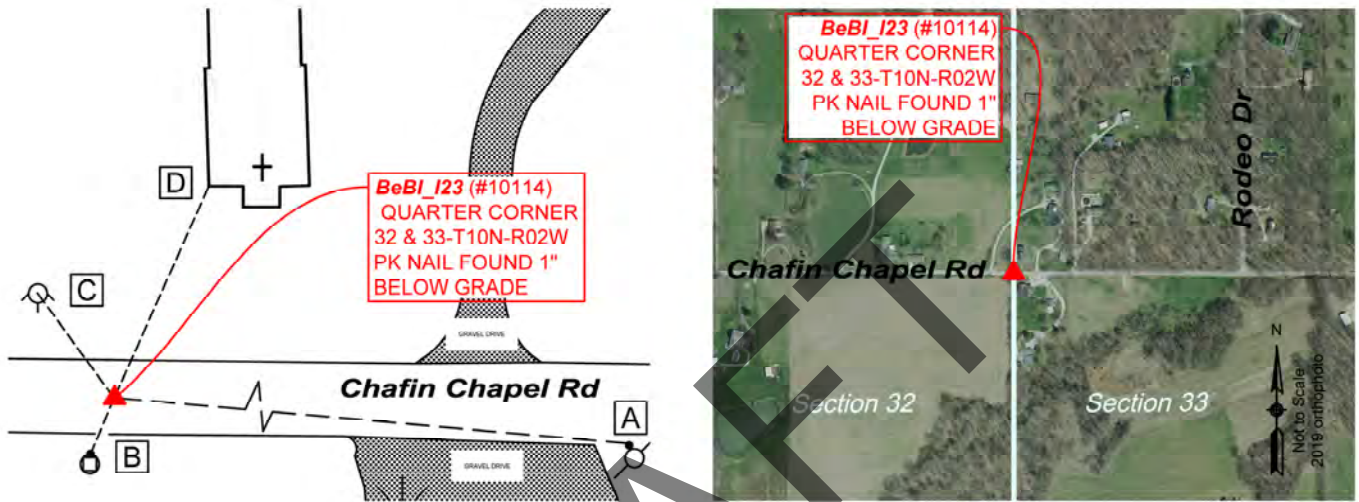
**Quarter Corner**

Sections 32 & 33- T10N-R02W, 2nd P.M.  
 Bean Blossom Township, Monroe County, Indiana



**MONUMENT:** Describe monument set or found (Include material type, scribing, distance above/below grade, dimensions.)  
 Found PK Nail in center of Chafin Chapel Road (+/-) 1" below grade.

**MONUMENT LOCATION SKETCH:**



WITNESS MONUMENT TIES

All ties to new Bearing Trees (BTs) are a mag nail set in a 1-1/2" plastic washer stamped "SURVEY MARKER - DO NOT REMOVE" and hack mark at the root crown (less than 12" above ground) perpendicular to the center of the tree, unless otherwise noted. BT diameters are noted as dbh and are measured approximately 4.5' above ground. Bearings are measured from the monument to the center of the BT, distances are measured from the monument to the mag nail.

ID	BEARING	DISTANCE	DESCRIPTION
Witness A	S 85d E	155.0'	Mag nail and washer set 0.2' above grade on the north side of an 11" power line pole.
Witness B	S 23d W	16.5'	"Protect Nearby Survey Marker" sign found 5' above grade on the south side of a 6" x 6" fence post that stands 6' above grade as per Witness B 2004 monument record.
Witness C	N 36d W	35.1'	4" water cleanout hydrant measured to center top as per Witness C 2004 monument record.
Witness D	N 24d E	62.59'	Found cut "X" southwest corner of church theatre as per Witness D 2004 monument record.



**OFFICE OF THE MONROE COUNTY SURVEYOR • Trohn Enright-Randolph**

119 W 7th Street, Bloomington, IN 47404 • 812-349-2570 • surveyoroffice@co.monroe.in.us

**PENDING**

**MONUMENT RECORD**

Corner ID: **BeBI\_I23**

**Quarter Corner**

Sections 32 & 33- T10N-R02W, 2nd P.M.  
Bean Blossom Township, Monroe County, Indiana

Section 32	Section 33
T10N-R02W	T10N-R02W
Bean Blossom	Bean Blossom

**PHOTO IDENTIFIED:** Photo Date: 10/28/2022



Photo Orientation & Description: BeBI\_I23 from above



Photo Orientation & Description: Looking southwest at BeBI\_I23

**ORIGINAL OR SUBSEQUENT SURVEY EVIDENCE FOUND:** *Include, search area or areas, search procedure, etc.*  
Date of Field work/Search: 10/28/2022 By: JG & HJ Monument Found: PK Nail BTs or Reference Objects Found: Found Witness B & C. However, the fence that once ran south from Witness B, was no longer there. And the chiseled "x" on Witness C, the water cleanout hydrant, was not found, perhaps due to paint deterioration or metal corrosion. The chiseled "x" for Witness D on the 2004 monument record was not found. The church foundation crumbled in the effort to dig for Cut "x". The distance and coordinates presented in 2004 match the west corner of church theater; Witness D hereafter. Project #: Bean Blossom Stones & More Field Book: 55/11 Equipment: The basis of bearings is Grid North System NAD83(2011)/Indiana West NAVD 88, Epoch 2010.0000, geoid12b\_conus.db3, US Survey Feet, derived from GPS observations utilizing the Indiana Real-Time Network (INCORS). Coordinate data was collected with a Javad Triumph LS Network Rover. Coordinates are available upon request. Distances to witness ties were collected with a Leica Disto laser distance meter and 100' measuring tape. Bearings to witness ties were collected with the internal magnetic compass of the Javad Triumph LS and were automatically adjusted to grid north and are approximately shown hereon for reference. Priority should be given to provided distances over bearings. Notes: All witness photos on file in the Monroe County Surveyors Office.

**OTHER EVIDENCE:** *Describe corner location relative to nearby features and how to reach the corner location – note fences, roads, timber cutting lines, mow lines, clearings, plantings, streams, topo changes, etc.*

The monument is located directly southwest of the small abandoned church at 7958 West Chafin Chapel Road. The "Protect Nearby Survey Marker" sign can be seen easily from the road. The church offers a generous front yard for staging.

**MONUMENT PRESERVATION:** *Describe work done to preserve existing monument.*

Geodetic controls were corroborated with the survey grade coordinates collected in 2004. Secureness of nail was assured. One new witness was set.

**THEORY OF LOCATION:** *Describe the theory of location for acceptance of this monument. Include monument origin and associated uncertainty.*

The PK Nail was previously witnessed by the Monroe County Surveyor, Steven V. Farkas, on December 27, 2004 using work performed by Licensed Surveyor, Ben Bledsoe (S0559). Before that, Monroe County Surveyor, Kevin Enright, witnessed a PK Nail on February 17, 2000. This monument record was approved by the Monroe County Surveyor Review Board under the condition that the corner was to be re-monumented within 30 days. The 2004 Monument Record accepted the PK Nail per a site plan prepared by Raymond Graham, Summitt Minor Subdivision (February 2, 2000), recorded as Instrument Number 2000006262.IN. Other References on File: a survey by Douglas R. Curry, MSC Realty, Plat of Survey (2003), on file at the Surveyor's Office as RSID004122, and a survey by Eric L. Deckard, The People's State Bank Boundary Survey (2010), on file at the Recorder's Office as 2010007913.IN. Historic research has not yet been performed to prove the validity of this monument.



**OFFICE OF THE MONROE COUNTY SURVEYOR • Trohn Enright-Randolph**

119 W 7th Street, Bloomington, IN 47404 • 812-349-2570 • surveyoroffice@co.monroe.in.us

Page 2 of 3

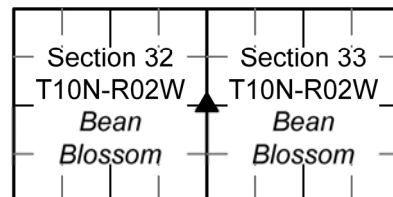
**PENDING**

**MONUMENT RECORD**

Corner ID: **BeBI\_I23**

**Quarter Corner**

Sections 32 & 33- T10N-R02W, 2nd P.M.  
Bean Blossom Township, Monroe County, Indiana



**CERTIFICATION:**

DRAFT



**OFFICE OF THE MONROE COUNTY SURVEYOR • Trohn Enright-Randolph**

119 W 7th Street, Bloomington, IN 47404 • 812-349-2570 • [surveyoroffice@co.monroe.in.us](mailto:surveyoroffice@co.monroe.in.us)

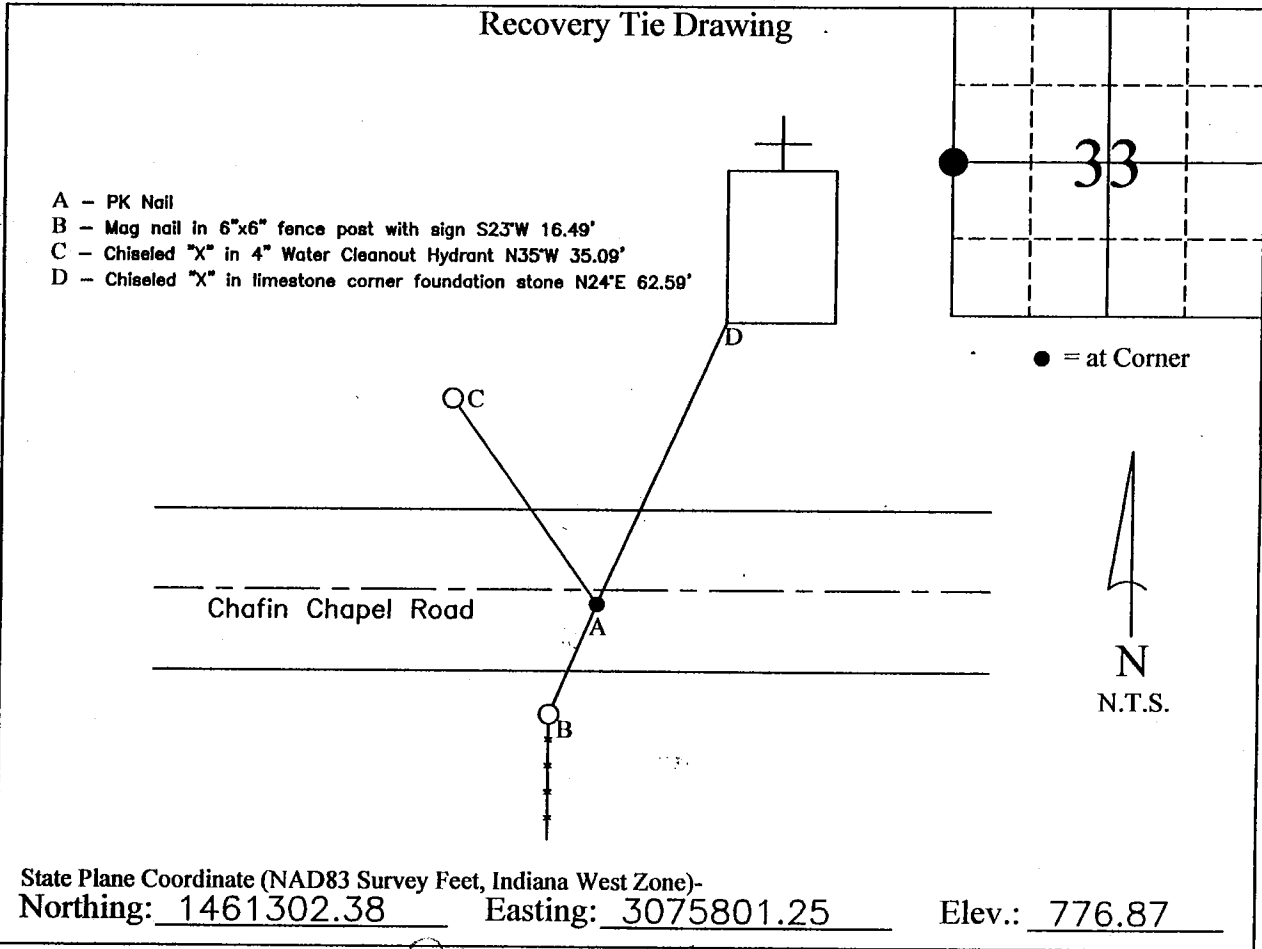
Corner I.D. # 1-23

# MONUMENT RECORD

STATE OF INDIANA ~ COUNTY OF MONROE

Section 33, Township 10 North, Range 2 West,

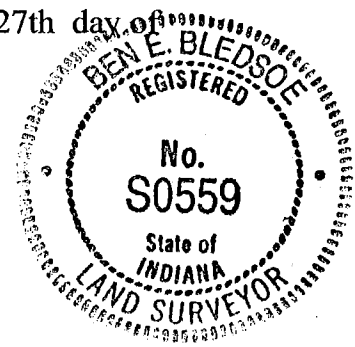
Monument Description & Remarks: PK Nail in centerline of Chafin Chapel Road



*COMPLETED By Steve U. Farkas*

I, Ben E. Bledsoe, Registered Land Surveyor, here by certify that this document was prepared under my direction in accordance with the provisions of Section 17-3-64-4 through 17-3-64-8 of the Indiana Code, being Acts of 1965, Chapter 319; this 27th day of December, 2004 A.D.

*Ben Bledsoe*  
Indiana Registered Land Surveyor No. S0559



# MONUMENT RECORD

## State of Indiana - County of Monroe

Section: 33

Township: 10 North

Range: 2 West

Corner ID: Be Bl I-23

**Monument Description & Remarks:** Found 1½" PK nail in centerline of Chafin Chapel Road at West ¼ corner of section. Nail was marked with orange paint and flagging.

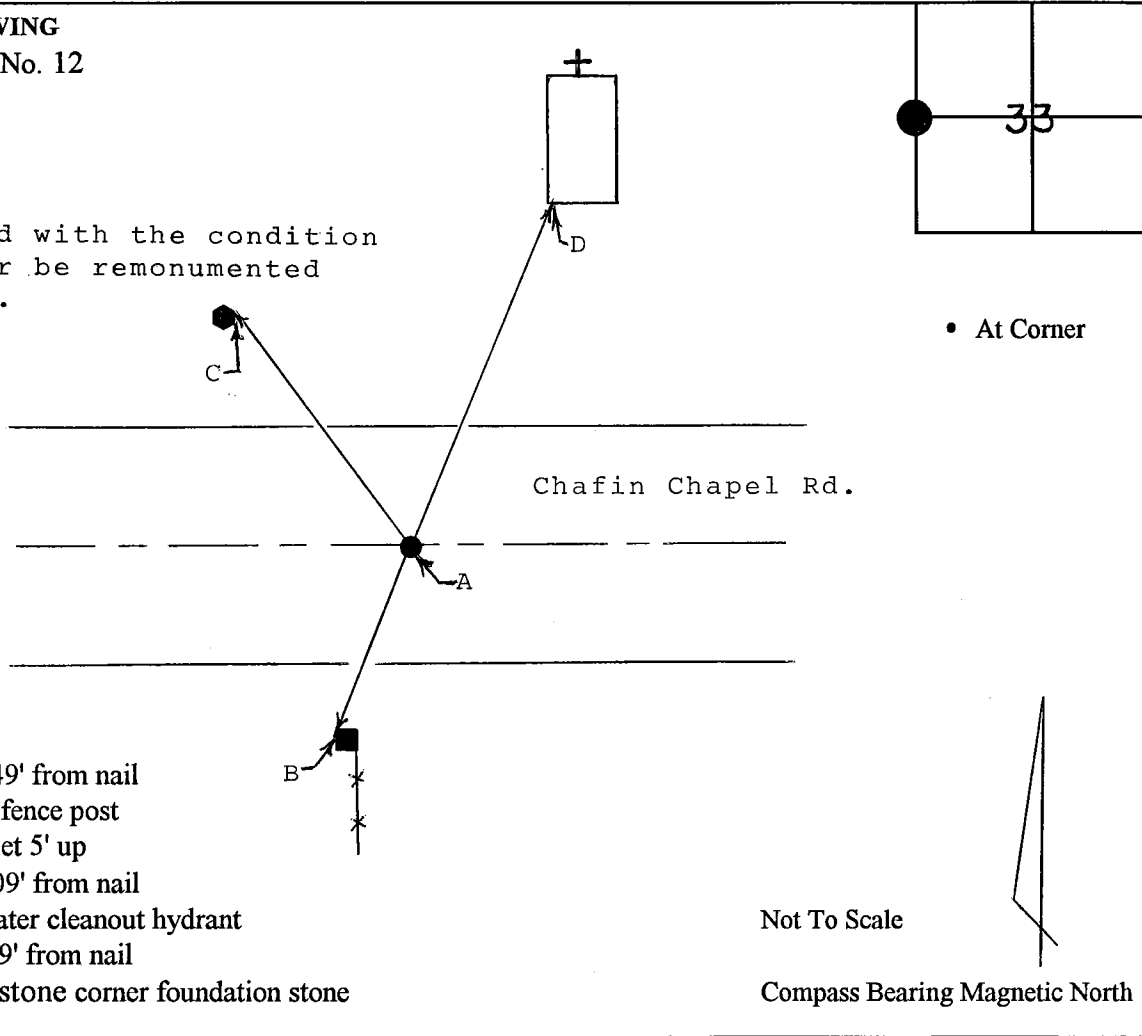
**References On File:** Site Plan for Summitt Minor Subdivision prepared by Raymond Graham, R.P.E., and dated February 2, 2000.

### RECOVERY TIE DRAWING

Field Book 00-01 Page No. 12

USGS Gosport Quad

Note: Approved with the condition that the corner be re-monumented within 30 days.



A - 1½" PK nail

B - South 23° West, 16.49' from nail  
MAG nail in 6" x 6" fence post  
Survey marker sign set 5' up

C - North 35° West, 35.09' from nail  
Chiseled "x" in 4" water cleanout hydrant

D - North 24° East, 62.59' from nail  
Chiseled "x" in limestone corner foundation stone

Not To Scale

Compass Bearing Magnetic North

I, Kevin P. Enright, Monroe County Surveyor, hereby certify that this document was prepared under my direction in accordance with the provisions of Section 36-2-12-11 of the Indiana Code; and the above data is given under my hand and seal this 17th day of February, 2000.



Administered by the Monroe County Surveyor Review Board

Date: 3-23-00



**PENDING**

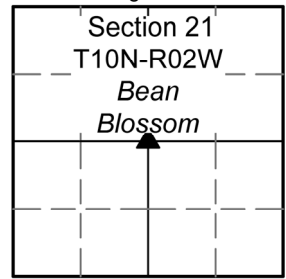
**MONUMENT RECORD**

Corner ID: **BeBI\_K15**

**Quarter Corner**

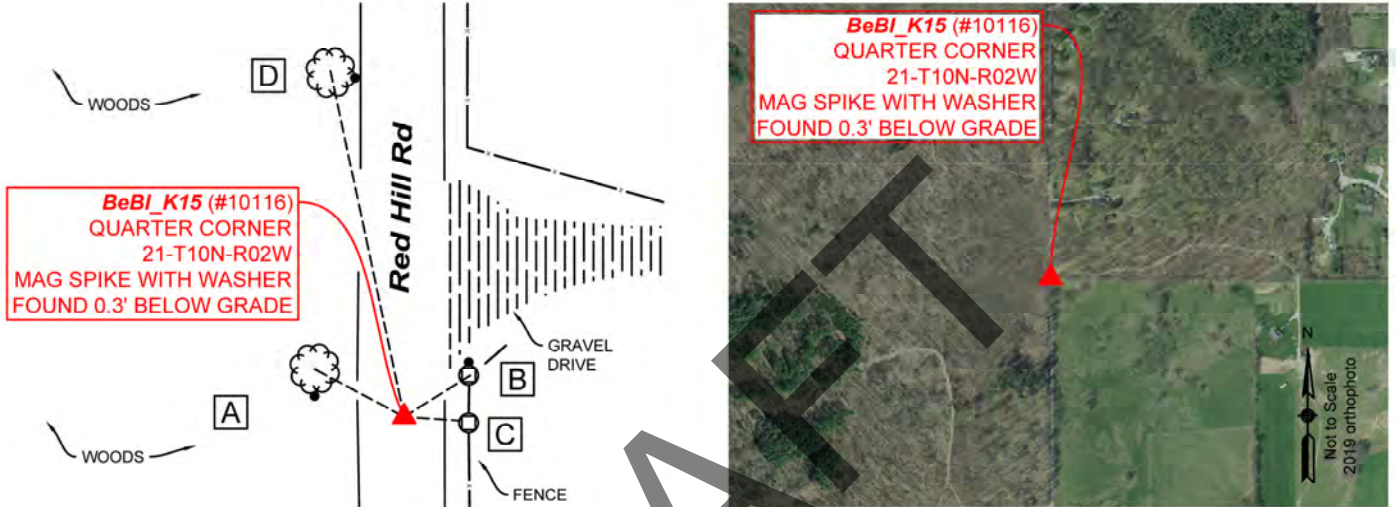
Section 21- T10N-R02W, 2nd P.M.

Bean Blossom Township, Monroe County, Indiana



**MONUMENT:** Describe monument set or found (Include material type, scribing, distance above/below grade, dimensions.)  
 Mag Spike with illegible washer found 0.3' below grade +/- 1' east of centerline of Red Hill Road.

**MONUMENT LOCATION SKETCH:**



**WITNESS MONUMENT TIES**

All ties to new Bearing Trees (BTs) are a mag nail set in a 1-1/2" plastic washer stamped "SURVEY MARKER - DO NOT REMOVE" and hack mark at the root crown (less than 12" above ground) perpendicular to the center of the tree, unless otherwise noted. BT diameters are noted as dbh and are measured approximately 4.5' above ground. Bearings are measured from the monument to the center of the BT, distances are measured from the monument to the mag nail.

ID	BEARING	DISTANCE	DESCRIPTION
Witness A	N 62d W	21.2'	Mag nail and washer set in hack 0.3' above grade on the south side of a 10" White Oak Tree.
Witness B	N 58d E	16.3'	Mag nail found on north side of formerly serviceable utility pole as per Witness B in 2007 monument record and now serving as a fence post with wire wrapped around it. "Protect Nearby Survey Markers" sign set 4' above grade on the west side of 11" power line pole truncated at a point (+/-) 5' above grade. New utility pole found east and adjacent.
Witness C	S 86d E	11.6'	9" Fence Post found 4.7' above grade as per Witness C in 2007 monument record. Post broken at base and leaning south, fully supported by fence wires.
Witness D	N 12d W	74.15'	Mag nail and washer set in hack 0.3' above grade on the southeast side of Red Oak Tree, replacing mag nail found loose in same spot as Witness D in 2007 monument record.



**OFFICE OF THE MONROE COUNTY SURVEYOR • Trohn Enright-Randolph**

119 W 7th Street, Bloomington, IN 47404 • 812-349-2570 • surveyoroffice@co.monroe.in.us

Page 1 of 2

Section 21	
T10N-R02W	
Bean Blossom	
↑	

**PENDING**

## MONUMENT RECORD

Corner ID: **BeBI\_K15**

**Quarter Corner**

Section 21- T10N-R02W, 2nd P.M.

Bean Blossom Township, Monroe County, Indiana

**PHOTO IDENTIFIED:** Photo Date: 11/22/2022



Photo Orientation & Description: Looking at BeBI\_K15 from above.



Photo Orientation & Description: Looking east at BeBI\_K15

**ORIGINAL OR SUBSEQUENT SURVEY EVIDENCE FOUND:** *Include, search area or areas, search procedure, etc.*

Date of Field work/Search: 11/22/2022 By: JG & HJ Monument Found: Mag Spike BTs or Reference Objects Found: All witnesses from 2007 monument record were found. However 2007's Witness B measured 11" in 2022 and the pole was cut and functioning as a fencepost while a newer pole was set inches east and adjacent to B. Project #: Bean Blossom Stones and More Field Book: 55/14 Equipment: The basis of bearings is Grid North System NAD83(2011)/Indiana West NAVD 88, Epoch 2010.0000, geoid12b\_conus.db3, US Survey Feet, derived from GPS observations utilizing the Indiana Real-Time Network (INCORS). Coordinate data was collected with a Javad Triumph LS Network Rover. Coordinates are available upon request. Distances to witness ties were collected with a 100' measuring tape. Bearings to witness ties were collected with the internal magnetic compass of the Javad Triumph LS and were automatically adjusted to grid north and are approximately shown hereon for reference. Priority should be given to provided distances over bearings. Notes: All witness photos on file in the Monroe County Surveyors Office.

**OTHER EVIDENCE:** *Describe corner location relative to nearby features and how to reach the corner location – note fences, roads, timber cutting lines, mow lines, clearings, plantings, streams, topo changes, etc.*

Monument is approximately 1' east of the centerline of Red Hill Road. It is approximately 15' south of a driveway for the 7372 N. Red Hill Drive homestead.

**MONUMENT PRESERVATION:** *Describe work done to preserve existing monument.*

Geodetic controls were collected. A new witness was established. A sign was set. Nearby property owners were made aware of the monument's existence.

**THEORY OF LOCATION:** *Describe the theory of location for acceptance of this monument. Include monument origin and associated uncertainty.*

The mag spike was set by Licensed Surveyor, Eric L. Deckard, while performing The Other Place Sliding Scale Subdivision Final Plat (2019), on file at the Recorder's Office as Instrument Number 20190010075.IN. According to this instrument, the mag spike previously witnessed by the Monroe County Surveyor, Kevin Enright, on August 28, 2007, and accepted by the Monroe County Surveyor Review Board on August 14, 2007, was not found at the time of Mr. Deckard's survey. Thus, the 2019 mag spike was set accordingly. The 2007 Monument Record accepted its mag spike per a boundary survey by Doug Curry for David Jenner and recorded as Instrument Number 2004002998.IN. Historic research has not yet been performed to prove the validity of this monument.

**CERTIFICATION:**



OFFICE OF THE MONROE COUNTY SURVEYOR • Trohn Enright-Randolph

119 W 7th Street, Bloomington, IN 47404 • 812-349-2570 • surveyoroffice@co.monroe.in.us

Page 2 of 2



MONUMENT RECORD  
State of Indiana - County of Monroe

Section: 21

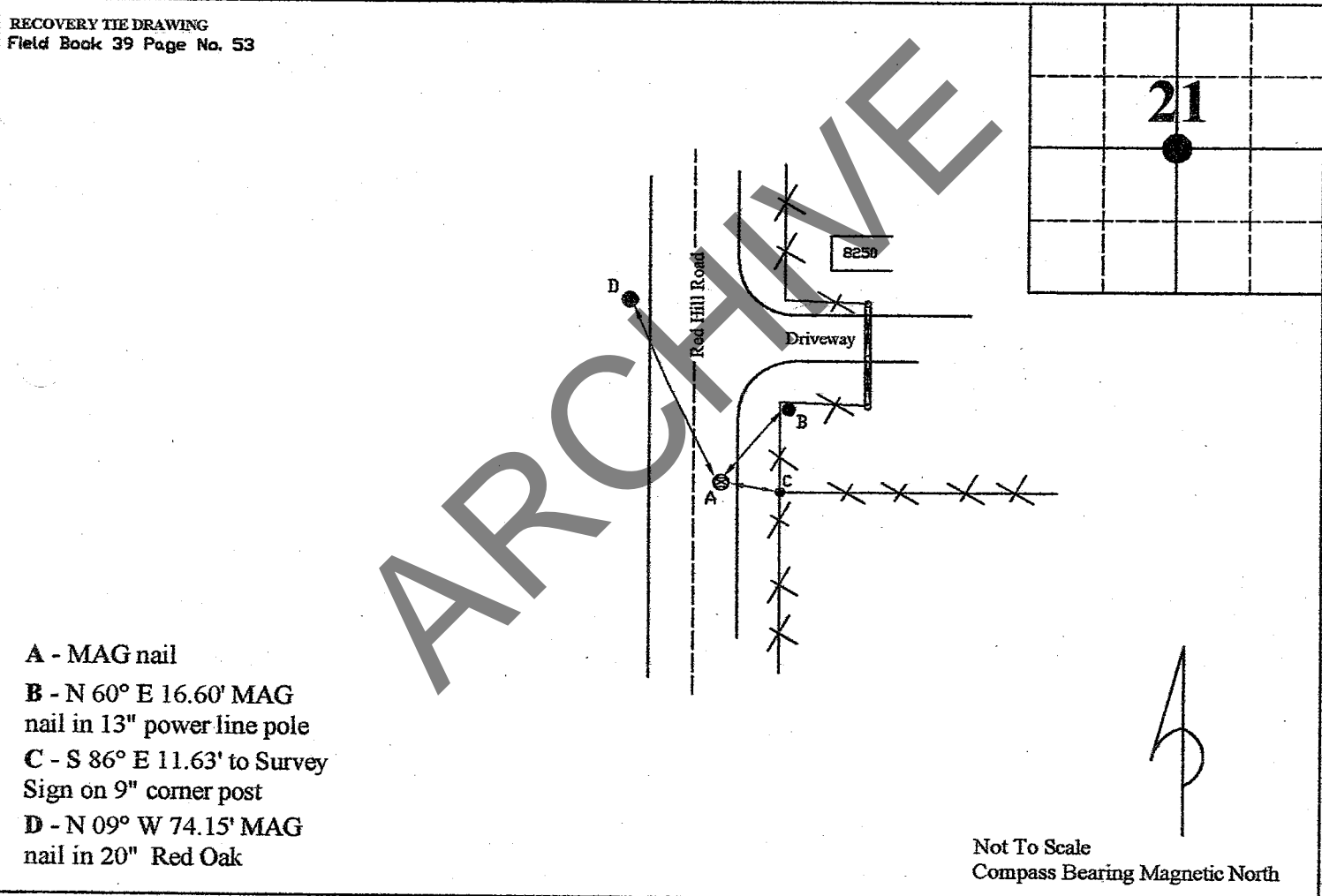
Township: 10 North

Range: 2 West

Corner ID: BeBl K-15

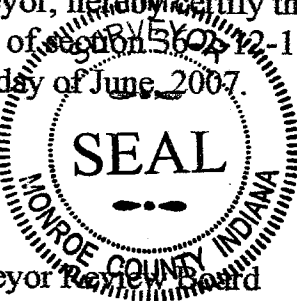
Monument Description & Remarks: MAG nail, 2ft East of center line of Red Hill Road. Survey Sign 4.5ft above ground at pt. C

References On File: Douglas Curry survey, David Jenner, on file in Recorder Office, cabinet S envelope 305



I, Kevin P. Enright, Monroe County Surveyor, hereby certify that this document was prepared under my direction in accordance with the provisions of section 5602-11 of the Indiana Code, and the above data is given under my hand and seal this 28th day of June, 2007.

*Kevin P. Enright*



Administered by the Monroe County Surveyor Review Board

8-14-2007

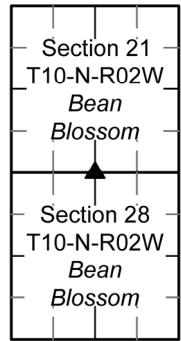
**PENDING**

**MONUMENT RECORD**

Corner ID: **BeBI\_K17**

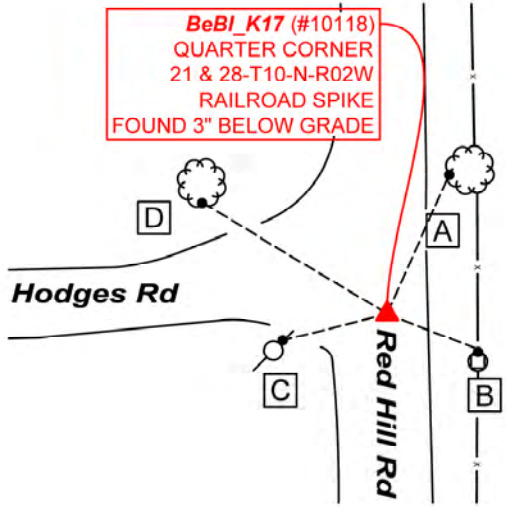
**Quarter Corner**

Sections 21 & 28- T10N-R02W, 2nd P.M.  
 Bean Blossom Township, Monroe County, Indiana



**MONUMENT:** Describe monument set or found (Include material type, scribing, distance above/below grade, dimensions.)  
 Found Railroad Spike near centerline of Red Hill Road (+/-) 5' south of its intersection with Hodges Road centerline 3" below grade.

**MONUMENT LOCATION SKETCH:**



**WITNESS MONUMENT TIES**

All ties to new Bearing Trees (BTs) are a mag nail set in a 1-1/2" plastic washer stamped "SURVEY MARKER - DO NOT REMOVE" and hack mark at the root crown (less than 12" above ground) perpendicular to the center of the tree, unless otherwise noted. BT diameters are noted as dbh and are measured approximately 4.5' above ground. Bearings are measured from the monument to the center of the BT, distances are measured from the monument to the mag nail.

ID	BEARING	DISTANCE	DESCRIPTION
Witness A	N 24d E	31.2'	Mag nail and washer set in hack 0.2' above grade on the northwest side of a 12" White Oak Tree wrapped in old and new barbwire and functioning as a fencepost.
Witness B	S 69d E	20.1'	Found mag nail 1' above grade on north side of 6" utility brace post as per Witness B on 1998 monument record.
Witness C	S 76d W	22.8'	Found mag nail on south side of 8" power line pole 8" above grade as per Witness C on 1998 monument record. Protect Nearby Survey Marker sign set on the east side of utility pole 4' above grade.
Witness D	N 59d W	45.7'	Set mag nail and washer in hack 1' above grade over magnetic signal on north side of 24" White Oak Tree as per 1998 monument record.



**OFFICE OF THE MONROE COUNTY SURVEYOR • Trohn Enright-Randolph**

119 W 7th Street, Bloomington, IN 47404 • 812-349-2570 • surveyoroffice@co.monroe.in.us

**PENDING**

**MONUMENT RECORD**

Corner ID: **BeBI\_K17**

**Quarter Corner**

Sections 21 & 28- T10N-R02W, 2nd P.M.  
Bean Blossom Township, Monroe County, Indiana

Section 21 T10-N-R02W Bean Blossom
Section 28 T10-N-R02W Bean Blossom

**PHOTO IDENTIFIED:** Photo Date: 12/15/2022



Photo Orientation & Description: Looking down at BeBI\_K17



Photo Orientation & Description: Looking southwest at BeBI\_K17

**ORIGINAL OR SUBSEQUENT SURVEY EVIDENCE FOUND:** Include, search area or areas, search procedure, etc.

Date of Field work/Search: 12/15/2022 By: JG & HJ Monument Found: Railroad Spike BTs or Reference Objects Found: Found Witnesses B, C & D from 1998 monument record Project #: Bean Blossom Stones & More Field Book: 55/16 Equipment: The basis of bearings is Grid North System NAD83(2011)/Indiana West NAVD 88, Epoch 2010.0000, geoid12b\_conus.db3, US Survey Feet, derived from GPS observations utilizing the Indiana Real-Time Network (INCORS). Coordinate data was collected with a Javad Triumph LS Network Rover. Coordinates are available upon request. Distances to witness ties were collected with a 100' measuring tape. Bearings to witness ties were collected with the internal magnetic compass of the Javad Triumph LS and were automatically adjusted to grid north and are approximately shown hereon for reference. Priority should be given to provided distances over bearings. Notes: All witness photos on file in the Monroe County Surveyors Office.

**OTHER EVIDENCE:** Describe corner location relative to nearby features and how to reach the corner location – note fences, roads, timber cutting lines, mow lines, clearings, plantings, streams, topo changes, etc.

BeBI\_K17 is approximately 5' south of where the centerlines of Red Hill Road and Hodges Road intersect. There is a longstanding fence that runs north to south along the east side of Red Hill Road. A utility pole and a fire hydrant are situated at the southwest corner of the streets' intersection. MOCOSO staged their vehicle facing south on a hill (+/-) 80' north of the monument for prudent visibility regarding north and south traffic.

**MONUMENT PRESERVATION:** Describe work done to preserve existing monument.

Geodetic Controls were captured for the monument. "Protect Nearby Survey Markers" sign was set on the east side of Witness C. A new witness was set.

**THEORY OF LOCATION:** Describe the theory of location for acceptance of this monument. Include monument origin and associated uncertainty.

The railroad spike was previously witnessed by the Monroe County Surveyor, Kevin Enright, on April 3, 1998 and accepted by the Monroe County Surveyor Review Board sometime after that. The 1998 Monument Record accepted the railroad spike per a survey by Michael D. Mundy, Jerry Kinser (1998), on file at Recorder's Office as 00803081.IN. Reference on File: a survey by Eric L. Deckard, The Other Place Sliding Scale Subdivision Final Plat (2019), on file at Recorder's Office as 20190010075.IN. Historic research has not yet been performed to prove the validity of this monument.



**OFFICE OF THE MONROE COUNTY SURVEYOR • Trohn Enright-Randolph**

119 W 7th Street, Bloomington, IN 47404 • 812-349-2570 • surveyoroffice@co.monroe.in.us

Page 2 of 3

# MONUMENT RECORD State of Indiana - County of Monroe

Section: 21

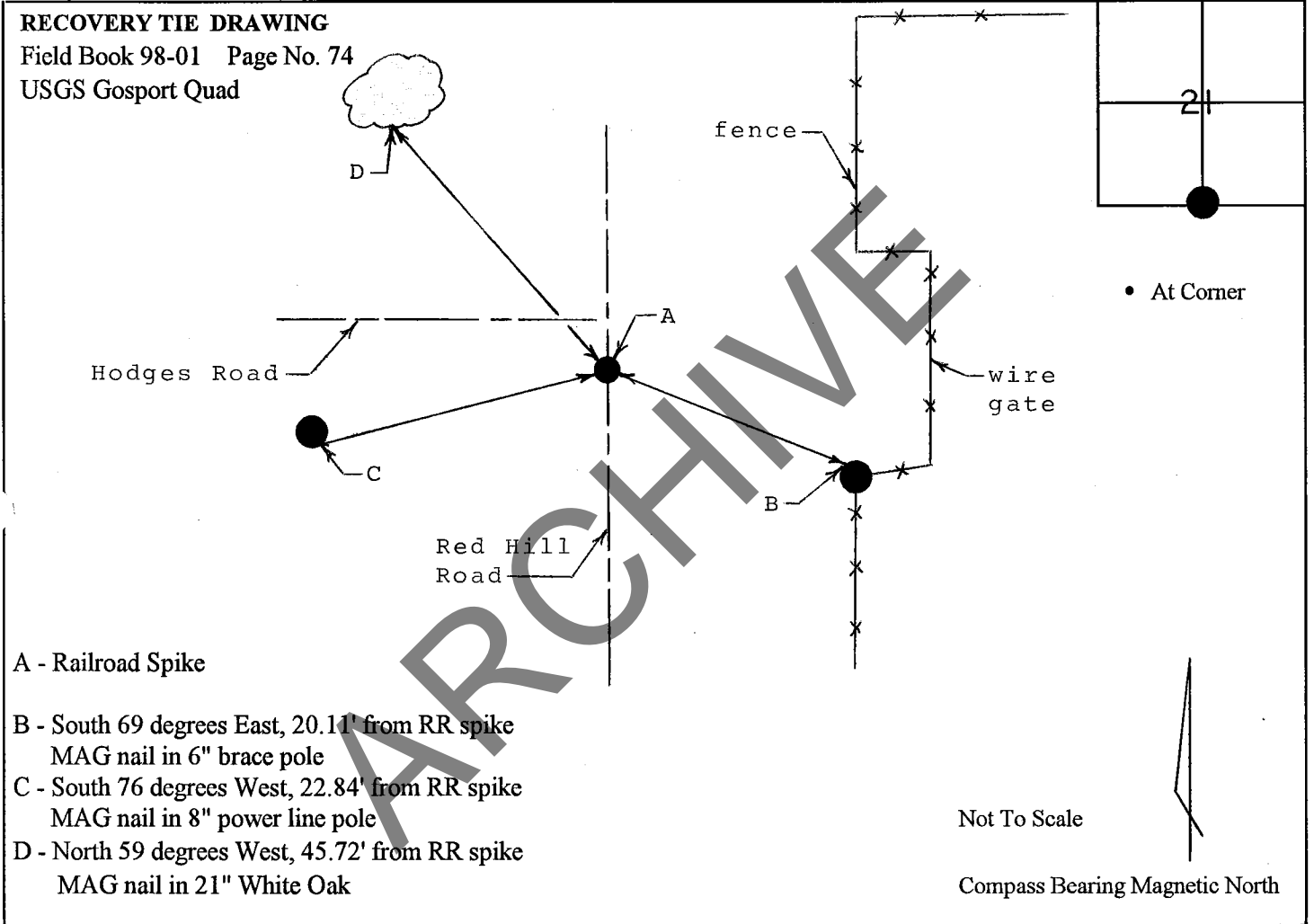
Township: 10 North

Range: 2 West

Corner ID: Be Bl K-17

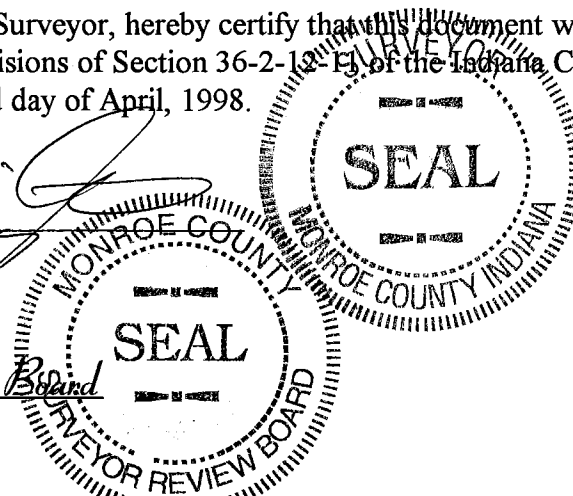
**Monument Description & Remarks:** Found Railroad Spike at South 1/4 corner of section, in centerline of Red Hill Road and 5' (+/-) South of Hodges Road centerline. Railroad Spike was firm in ground, near surface of pavement, marked with orange and pink paint. Repainted with 4' x 4' white "+" for aerial control.

**References on file in the County Surveyor's Office:** Mike Mundy survey recorded in Book No. 4, Page 450, survey cabinet drawer 3, in the Recorder's Office.



I, Kevin P. Enright, Monroe County Surveyor, hereby certify that this document was prepared under my direction in accordance with the provisions of Section 36-2-12-13 of the Indiana Code; and the above data is given under my hand and seal this 3rd day of April, 1998.

*Kevin P. Enright*



Administered by: Surveyor Review Board

**PENDING**

**MONUMENT RECORD**

Corner ID: **BeBI\_M17**

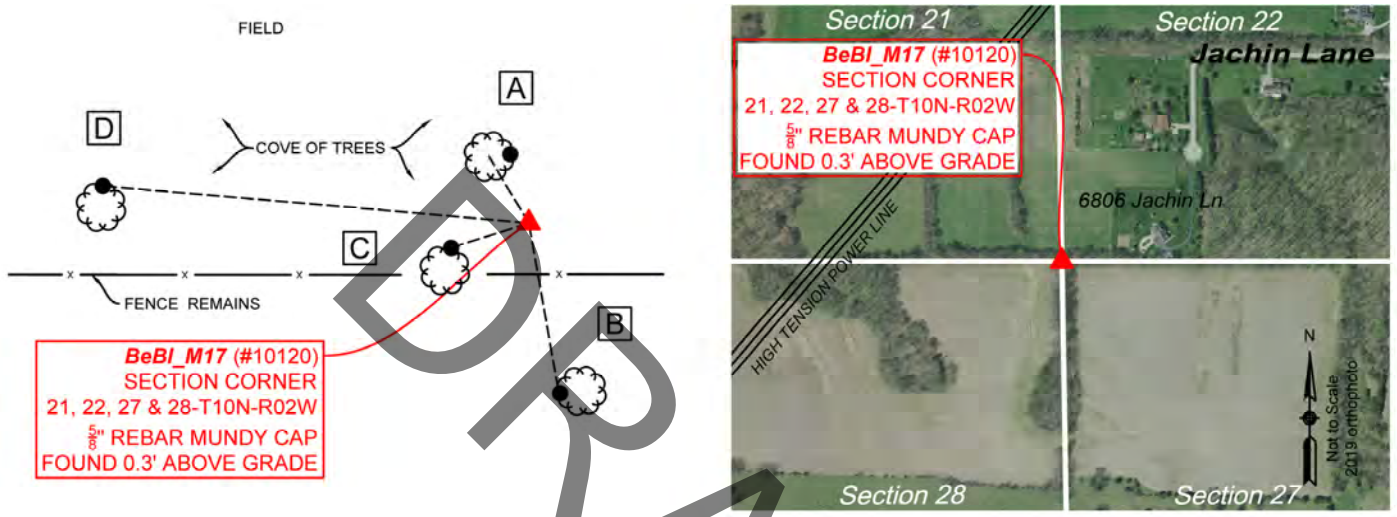
**Section Corner**

Sections 21, 22, 27 & 28- T10N-R02W, 2nd P.M.  
 Bean Blossom Township, Monroe County, Indiana

Section 21 T10N-R02W Bean Blossom	Section 22 T10N-R02W Bean Blossom
Section 28 T10N-R02W Bean Blossom	Section 27 T10N-R02W Bean Blossom

**MONUMENT:** Describe monument set or found (Include material type, scribing, distance above/below grade, dimensions.)  
 5/8" Rebar with red plastic cap marred but readable cap stamped, "MUNDY LS 880014" 0.3' above grade and directly west of an irregular shaped sandstone.

**MONUMENT LOCATION SKETCH:**



**WITNESS MONUMENT TIES**

All ties to new Bearing Trees (BTs) are a mag nail set in a 1-1/2" plastic washer stamped "SURVEY MARKER - DO NOT REMOVE" and are measured approximately 4.5' above ground. Bearings are measured from the monument to the center of the BT, distances are measured from the monument to the mag nail. The 1997 bearings were found to be directed to mag nails rather than the center of the trees. The new mag nails and washers for Witnesses B, C & D were set in this fashion as well to be consistent with 1997 monument record.

ID	BEARING	DISTANCE	DESCRIPTION
Witness A	N 31d W	8.1'	Mag nail and washer in hack set 0.4' above grade on the east side of a 9" Wild Black Cherry Tree.
Witness B	S 10d E	17.9'	Mag nail and washer set in hack 0.2' above grade over a magnetic signal found on the west side of a 12" Pignut Hickory Tree as per Witness B in 1997 monument record.
Witness C	S 72d W	8.6'	Mag nail and washer set in hack 0.2' above grade over a magnetic signal found on the north side of 10" Hackberry Tree as per Witness C in 1997 monument record.
Witness D	N 85d W	44.8'	Mag nail and washer set in hack 0.4' above grade over magnetic signal found in a +/- 4" x 6" scar on the north side of a 27" Black Walnut Tree as per Witness D on 1997 monument record.



**OFFICE OF THE MONROE COUNTY SURVEYOR • Trohn Enright-Randolph**

119 W 7th Street, Bloomington, IN 47404 • 812-349-2570 • surveyoroffice@co.monroe.in.us

**PENDING**

## MONUMENT RECORD

Corner ID: **BeBI\_M17**

### Section Corner

Sections 21, 22, 27 & 28- T10N-R02W, 2nd P.M.  
Bean Blossom Township, Monroe County, Indiana

Section 21 T10N-R02W Bean Blossom	Section 22 T10N-R02W Bean Blossom
Section 28 T10N-R02W Bean Blossom	Section 27 T10N-R02W Bean Blossom

**PHOTO IDENTIFIED:** Photo Date: 01/05/2023



Photo Orientation & Description: Looking south at BeBI\_M17



Photo Orientation & Description: Looking down at BeBI\_M17

**ORIGINAL OR SUBSEQUENT SURVEY EVIDENCE FOUND:** *Include, search area or areas, search procedure, etc.*

Date of Field work/Search: 01/05/2023 By: JG & HJ Monument Found: Rebar BTs or Reference Objects Found: Found all three witnesses from 1997 monument record. Project #: Bean Blossom Stones & More Field Book: 55/18 Equipment: The basis of bearings is Grid North System NAD83(2011)/Indiana West NAVD 88, Epoch 2010.0000, geoid12b\_conus.db3, US Survey Feet, derived from GPS observations utilizing the Indiana Real-Time Network (INCORS). Coordinate data was collected with a Javad Triumph LS Network Rover. Coordinates are available upon request. Distances to witness ties were collected with a Leica Disto laser distance meter. Bearings to witness ties were collected with the internal magnetic compass of the Javad Triumph LS and were automatically adjusted to grid north and are approximately shown hereon for reference. Priority should be given to provided distances over bearings. Notes: All witness photos on file in the Monroe County Surveyors Office.

**OTHER EVIDENCE:** *Describe corner location relative to nearby features and how to reach the corner location – note fences, roads, timber cutting lines, mow lines, clearings, plantings, streams, topo changes, etc.*

The monument is approximately 2' north of a downed east/west fence that runs within a cove of trees. The best access point is the 6806 Jachin Lane homestead.

**MONUMENT PRESERVATION:** *Describe work done to preserve existing monument.*

Geodetic controls were established for the rebar. A new witness was set. "Protect Nearby Survey Marker" sign was set 6" southwest of the monument.

**THEORY OF LOCATION:** *Describe the theory of location for acceptance of this monument. Include monument origin and associated uncertainty.*

The rebar was previously witnessed by the Monroe County Surveyor, Kevin Enright, on December 22, 1997, and accepted by the Monroe County Surveyor Review Board sometime after that. The 1997 Monument Record accepted the rebar per an unspecified boundary survey by Mike Mundy, likely; Plat of Control Monuments Used for Retracement Survey for Carol May (1995), wherein Mr. Mundy sets the rebar next to the stone, on file at the Surveyor's Office as RSID004235. One other Reference on File: an Eric L. Deckard Survey, The Other Place Sliding Scale Subdivision Final Plat (2019), on file at the Recorder's Office as 20190010075.IN.

Since the rebar was set, however, there are three References on File that hold the sandstone as the monument with no mention of the rebar. A survey by Stephen E. Ramsey, Maycrest Subdivision Amendment One Final Plat (1997), on file at the Recorder's Office as 707146.IN, a Douglas R. Curry survey, David L. Jenner, 81.88 Acre Survey (2004), on file at the Recorder's Office as 2004002998.IN and a Douglas R. Curry survey, Carl A. Litten 5 Acre Parcel (2004), on file at the Recorder's Office as 2004010067.IN. Historic research has not yet been performed to prove the validity of this monument.



**OFFICE OF THE MONROE COUNTY SURVEYOR • Trohn Enright-Randolph**

119 W 7th Street, Bloomington, IN 47404 • 812-349-2570 • surveyorsoffice@co.monroe.in.us

Page 2 of 3

# MONUMENT RECORD

## State of Indiana - County of Monroe

Section: 27

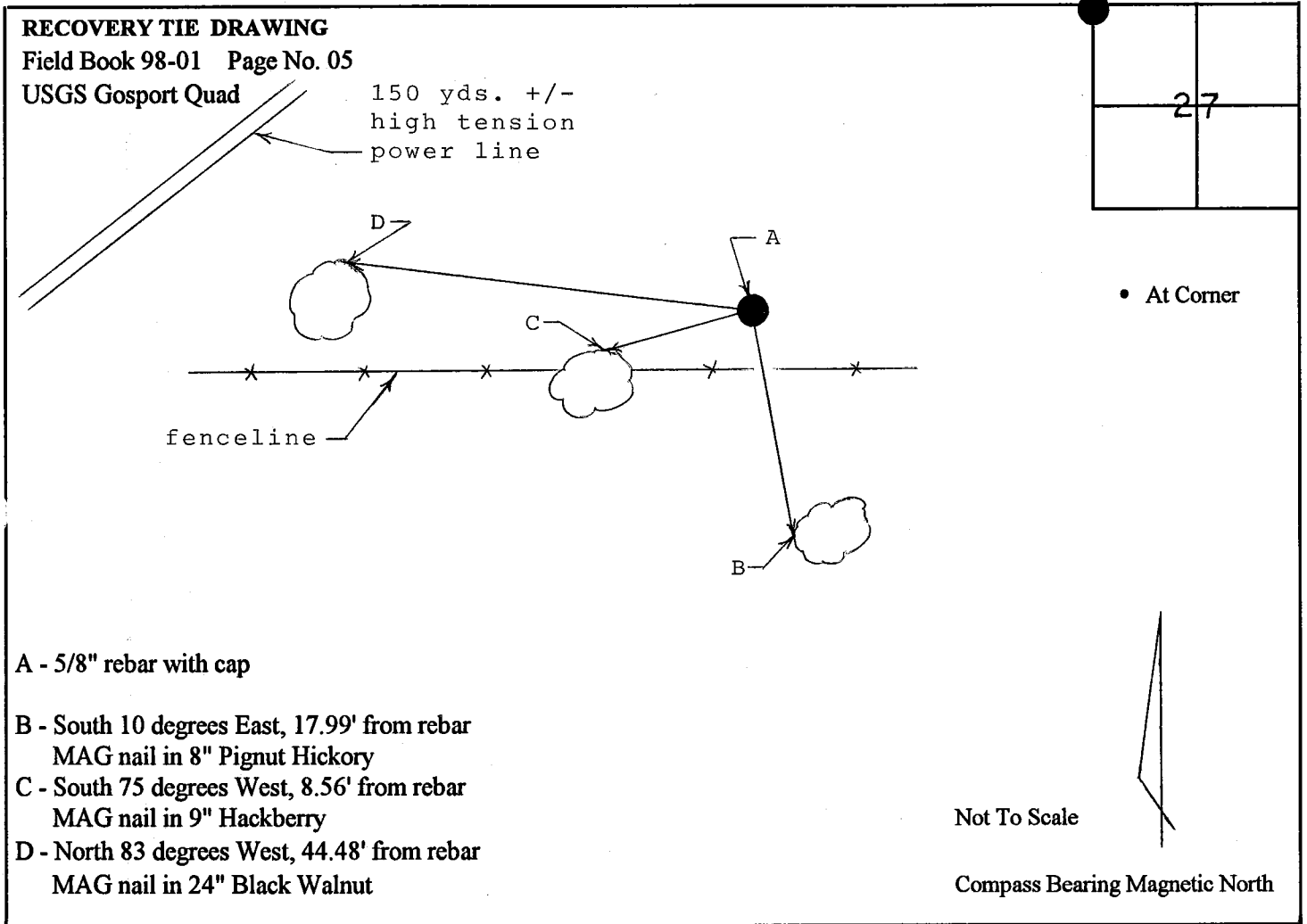
Township: 10 North

Range: 2 West

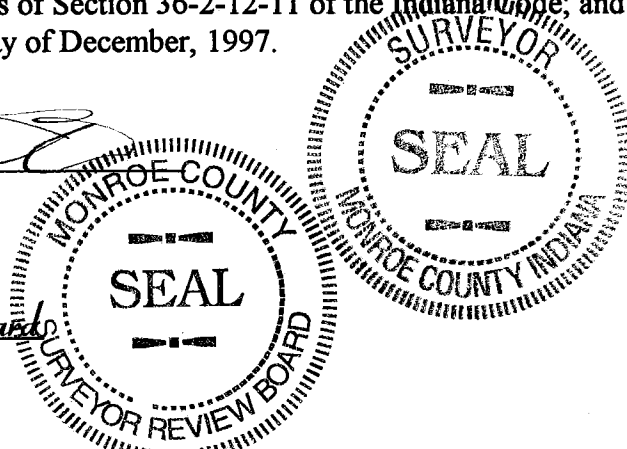
Corner ID: Be BI M-17

**Monument Description & Remarks:** Found 5/8" Rebar with red "Mundy LS 880014" cap at NW corner of section. Rebar found on west side of sandstone, solid in ground with no etchings, pointed top, leaning to the northwest.

**References on file in the County Surveyor's Office:** Referenced by Mike Mundy, R.L.S.



I, Kevin P. Enright, Monroe County Surveyor, hereby certify that this document was prepared under my direction in accordance with the provisions of Section 36-2-12-11 of the Indiana Code; and the above data is given under my hand and seal this 22nd day of December, 1997.



Administered by: Surveyor Review Board

**PENDING**

**MONUMENT RECORD**

Corner ID: **BeBI\_U03**

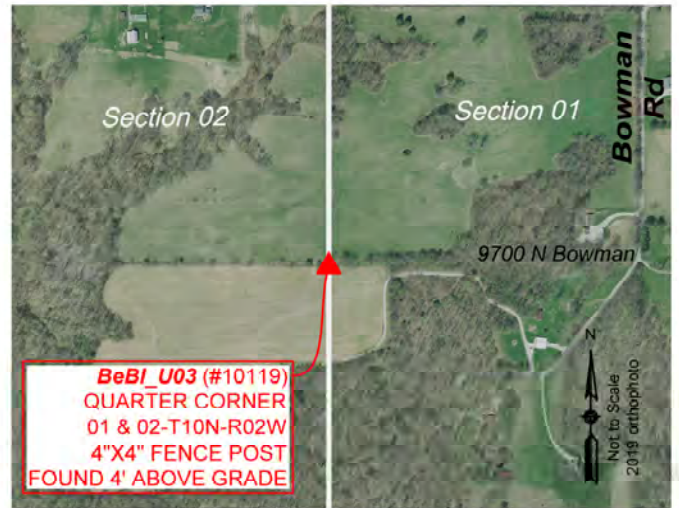
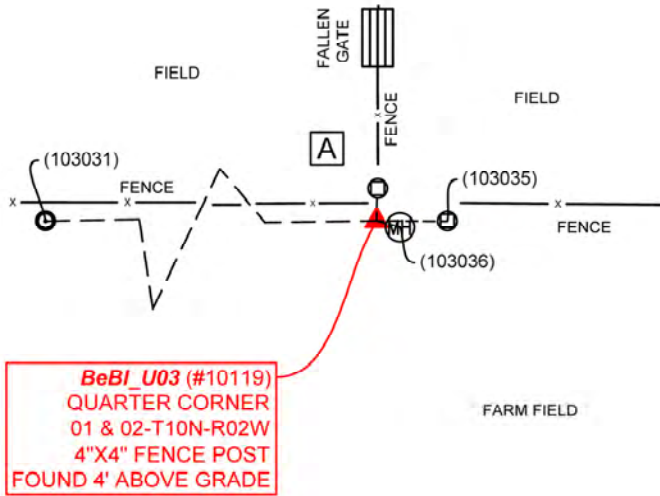
**Quarter Corner**

Sections 01 & 02- T10N-R02W, 2nd P.M.  
 Bean Blossom Township, Monroe County, Indiana

Section 02	Section 01
T10N-R02W	T10N-R02W
Bean Blossom	Bean Blossom

**MONUMENT:** Describe monument set or found (Include material type, scribing, distance above/below grade, dimensions.)  
 Found 4" x 4" x 4' Corner Fence Post at intersection of east/west and north/south fence.

**MONUMENT LOCATION SKETCH:**



WITNESS MONUMENT TIES			
<p>All ties to new Bearing Trees (BTs) are a mag nail set in a 1-1/2" plastic washer stamped "SURVEY MARKER - DO NOT REMOVE" and hack mark at the root crown (less than 12" above ground) perpendicular to the center of the tree, unless otherwise noted. BT diameters are noted as dbh and are measured approximately 4.5' above ground. Bearings are measured from the monument to the center of the BT, distances are measured from the monument to the mag nail.</p>			
ID	BEARING	DISTANCE	DESCRIPTION
Witness A	N 1d E	5.8'	South side of 4" x 12' PVC post with orange sign facing east reading, "WARNING TRANSCONTINENTAL CABLE ROUTE... AT&T," above that (+/- 9' above grade) black numbers, "2154" and two orange stripes at the top of pipe.
MONUMENT ACCESSORIES			
<p>Other survey grade monuments that were located in the vicinity and their relation to the monument.</p>			
(#103031)	N 89d56'57" W	497.00'	Found 5/8" rebar with blue Deckard cap 0.4' above grade reading, "DECKARD FIRM #0129."
(#103035)	S 89d37'27" E	18.49'	Coordinates collected at center of old but sturdy 1' diameter, 5' in height corner fence post
(#103036)	S 73d56'11" E	6.36'	Coordinates collected at center of bell emblem near center of 3' telecommunications manhole cover.



**OFFICE OF THE MONROE COUNTY SURVEYOR • Trohn Enright-Randolph**

119 W 7th Street, Bloomington, IN 47404 • 812-349-2570 • surveyoroffice@co.monroe.in.us



**PENDING**

**MONUMENT RECORD**

Corner ID: **BeBI\_U03**

**Quarter Corner**

Sections 01 & 02- T10N-R02W, 2nd P.M.  
Bean Blossom Township, Monroe County, Indiana

Section 02	Section 01
T10N-R02W	T10N-R02W
Bean Blossom	Bean Blossom

**PHOTO IDENTIFIED:** Photo Date: 12/09/2022 & 12/29/2022



Photo Orientation & Description: Looking north at BeBI\_U03



Photo Orientation & Description: Looking west at BeBI\_U03 and Witness A

**ORIGINAL OR SUBSEQUENT SURVEY EVIDENCE FOUND:** Include, search area or areas, search procedure, etc.

Date of Field work/Search: 12/09/2022 & 12/29/2022 By: JG & HJ Monument Found: Fencepost BTs or Reference Objects Found: NA  
Project #: Bean Blossom Stones & More Field Book: 55/15 Equipment: The basis of bearings is Grid North System  
NAD83(2011)/Indiana West NAVD 88, Epoch 2010.0000, geoid12b\_conus.db3, US Survey Feet, derived from GPS observations utilizing the Indiana Real-Time Network (INCORS). Coordinate data was collected with a Javad Triumph LS Network Rover. Coordinates are available upon request. Distances to witness ties were collected with 100' measuring tape. Bearings to witness ties were collected with the internal magnetic compass of the Javad Triumph LS and were automatically adjusted to grid north and are approximately shown hereon for reference. Priority should be given to provided distances over bearings. Notes: All witness photos on file in the Monroe County Surveyors Office.

**OTHER EVIDENCE:** Describe corner location relative to nearby features and how to reach the corner location – note fences, roads, timber cutting lines, mow lines, clearings, plantings, streams, topo changes, etc.

Monument is at the southeast corner of longstanding fence running east/west and north/south. Trees and vegetation trace the fence's course. MCSO found the best route to the monument was from 9700 N Bowman Rd. From there, follow the gravel drive northwesterly to a farm field. During a dry spell, when there is no farming in progress, a vehicle can be brought directly to the monument from the point where the gravel drive ends (approximately 275' feet).

**MONUMENT PRESERVATION:** Describe work done to preserve existing monument.

Geodetic controls were taken for the monument and three witnesses. "Protect Nearby Survey Marker" sign was set on monument.

**THEORY OF LOCATION:** Describe the theory of location for acceptance of this monument. Include monument origin and associated uncertainty.

In 2003, while performing the Stierwalt Survey, on file as 2003028780.IN at the Recorder's Office, licensed surveyor, Michael Sheppard, held the fencepost as the corner. He probed for more monumentation but notes in the past there had much digging in the area due to AT&T Transcontinental Cable Route. Mr. Sheppard concludes: "Due to the long-standing occupation lines that corner at this post, this post is, in my opinion, the most reliable evidence of the original location of the of the West Quarter Corner of Section 1, Township 10 North, range 2 West (originally established by the Bureau of Land Management and monumented with a wooden stake in 1819) with an estimated 3' of uncertainty."

In 2010, while performing the 162.64 +/- Acre Survey, on file as 2010003806.IN at the Recorder's Office, Mr. Sheppard sustains that opinion but references a Douglas R. Curry survey report, Report of Survey Gilbert R. Payton Family (2004), on file at the Recorder's Office as 2004003654, wherein Mr. Curry holds an uncapped 5/8" rebar of unknown origin +/- 17' north of the fencepost as the corner.



**OFFICE OF THE MONROE COUNTY SURVEYOR • Trohn Enright-Randolph**

119 W 7th Street, Bloomington, IN 47404 • 812-349-2570 • surveyoroffice@co.monroe.in.us

Page 2 of 3



**MONUMENT RECORD**

Corner ID: **BeBI\_U03**

**Quarter Corner**

Sections 01 & 02- T10N-R02W, 2nd P.M.  
Bean Blossom Township, Monroe County, Indiana

Section 02	Section 01
T10N-R02W	T10N-R02W
Bean Blossom	Bean Blossom

Mr. Curry references some of the original surveys for Section 1 Township 10 North Range 2 West and sites inconsistencies and ambiguities on both the length of the east line of the northeast quarter of said Section 1 and the methods from which the measurement came from. It is also noted here that another source of Section 1 irregularity was due to it being the closing section when the original Township Federal Plat was conducted.

In subsequent years, Eric L. Deckard also held the fencepost as BeBI\_U03 with these References on File: Prather Type A Administrative Subdivision Final Plat Amendment 1 (2020) on file at the Recorder's Office as 2020020043.IN and Marvin Smith Sliding Scale Subdivision (2022) on file at the Recorder's Office as 2022002182.IN.

Historic research has not yet been performed to prove the validity of this monument.

**CERTIFICATION:**



**OFFICE OF THE MONROE COUNTY SURVEYOR • Trohn Enright-Randolph**

119 W 7th Street, Bloomington, IN 47404 • 812-349-2570 • surveyoroffice@co.monroe.in.us