



Monroe County Highway Department

501 N. Morton St., Suite 216, Bloomington, IN 47404
(812) 349-2555 Fax (812) 349-2959
www.co.monroe.in.us

Fullerton Pike Phase III Design Features
Rockport Road to Rogers Street
October 17, 2019

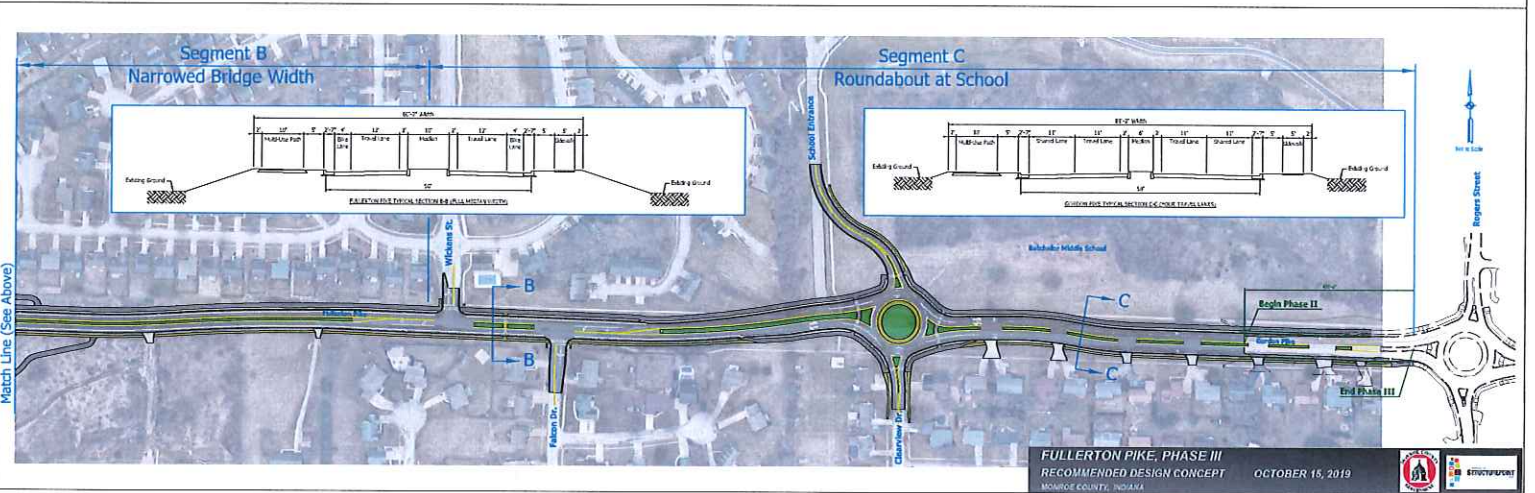
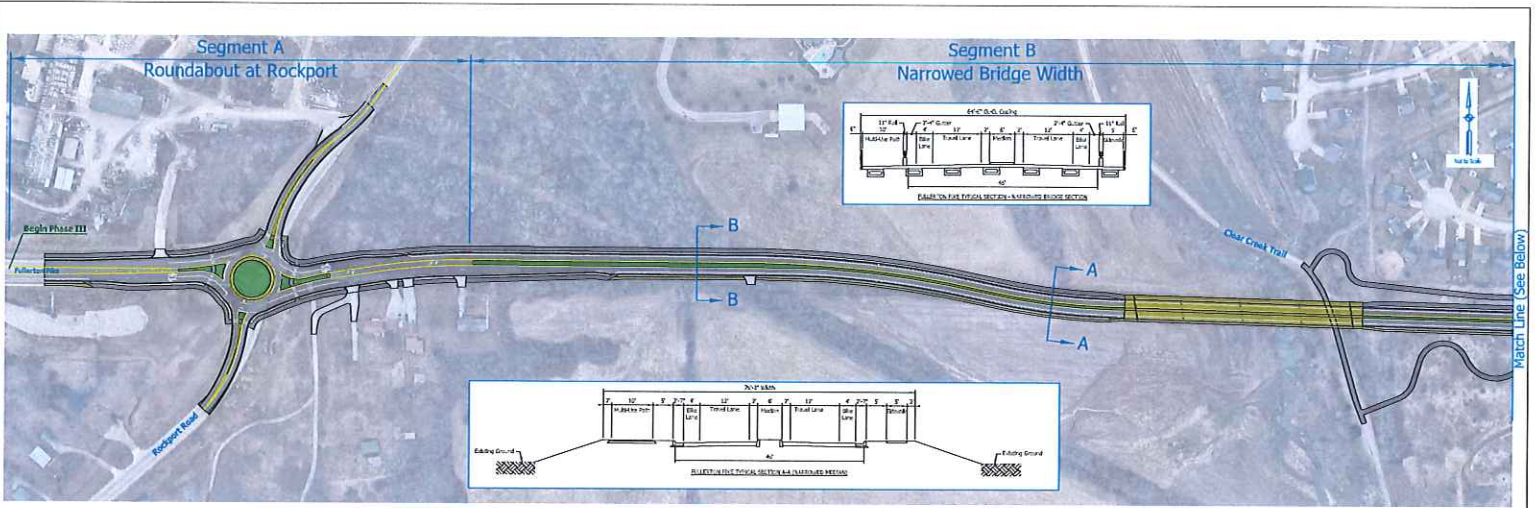
Fullerton Pike Phase III project will include the following design features:

1. Roundabout at Fullerton Pike and Rockport Road - Most of the right-of-way required for this roundabout was set aside as part of the I-69 project. This roundabout will be similar to the one at Rogers Street. Street lights will be included with the roundabout.
2. Roundabout at Fullerton Pike and Batchelor Middle School/Clearview Drive - The roundabout provides traffic calming to the corridor and will have pedestrian cross walks. This roundabout will be similar to the one at Rogers Street. Street lights will be included with the roundabout.
3. Conventional intersections at Wickens Street and Falcon Drive – There are no turn restrictions at these intersections. The raised median on Fullerton Pike will transition to a left turn lane at these intersections to provide for left turns off of Fullerton Pike.
4. 6 ft. or 10 ft. raised median - The raised median provides additional traffic calming measures. The median also provides a pedestrian refuge for pedestrians that will cross between blocks. The median provides opportunities for landscaping. The 6 ft. median is used at the creek bridge and along the section of road between the Batchelor School drive and Rogers Street. Cuts in the median will provide driveway access between the Batchelor School drive and Rogers Street.
5. 12 ft. width travel lane - This travel lane width combined with the bike lane width will allow for the passing of emergency vehicles and stalled vehicles. Two 11 ft. lanes are used between the Batchelor Driveway roundabout and the Rodgers Street roundabout to provide lane continuity.
6. 10 ft. multi-use path - The multi-use path will be located on the north side of the road and will be separated from the road with a 5 ft. grass strip.
7. 5 ft. sidewalk - The sidewalk will be located on the south side of the road and will be separated from the road with a 5 ft. grass strip.
8. Bike lanes - 4 ft. wide bike lanes run from Rockport Road to the Batchelor School Roundabout. Between the Batchelor roundabout and the Rogers Street roundabout, bikes will share the right lane.
9. Creek bridge – The bridge will feature a 6 ft. median, a 10 ft. multi-use path and a 5 ft. sidewalk. The multi-use path and the sidewalk will be separated from the travel lanes with a concrete barrier rail. This bridge will be similar to the bridge that is being constructed east of Rogers Street. The bridge will cross over the Clear Creek trail. Lighting will be provided underneath the bridge for the trail. Ramps will be constructed to connect the Clear Creek trail with the sidewalk and multi-use path.

10. Typical Cross Section Width Comparison:

All dimensions shown are measured from the roadway back of curb and gutter on each side of the roadway.

Roadway Segment	Width, Back to Back of Curb
Fullerton Pike Phase I, Walnut Street Pike to Trailer Park	53' – 2"
Fullerton Pike Phase II, Trailer Park to Rogers Street	47' – 2"
Fullerton Pike Phase III, Rogers Street to Batchelor/Clearview	59' – 2"
Fullerton Pike Phase III, Batchelor/Clearview to bridge	51' – 2"
Fullerton Pike Phase III, Bridge Area	47' – 2"
Fullerton Pike Phase III, bridge to Rockport Road	51' – 2"



FULLERTON PIKE, PHASE III
RECOMMENDED DESIGN CONCEPT
OCTOBER 15, 2019

