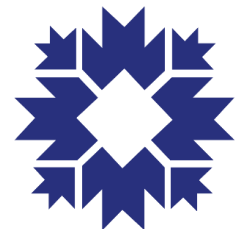


# Watersheds and Weather

Kriste Lindberg, MS4CECI  
Stormwater Education Specialist



**CITY OF BLOOMINGTON**  
UTILITIES

THE NATION BEHAVES WELL IF IT TREATS  
THE NATURAL RESOURCES AS ASSETS  
WHICH IT MUST TURN OVER  
TO THE NEXT GENERATION  
INCREASED AND NOT IMPAIRED IN VALUE

THEODORE ROOSEVELT 1910

H-135

# WHAT IS STORMWATER?

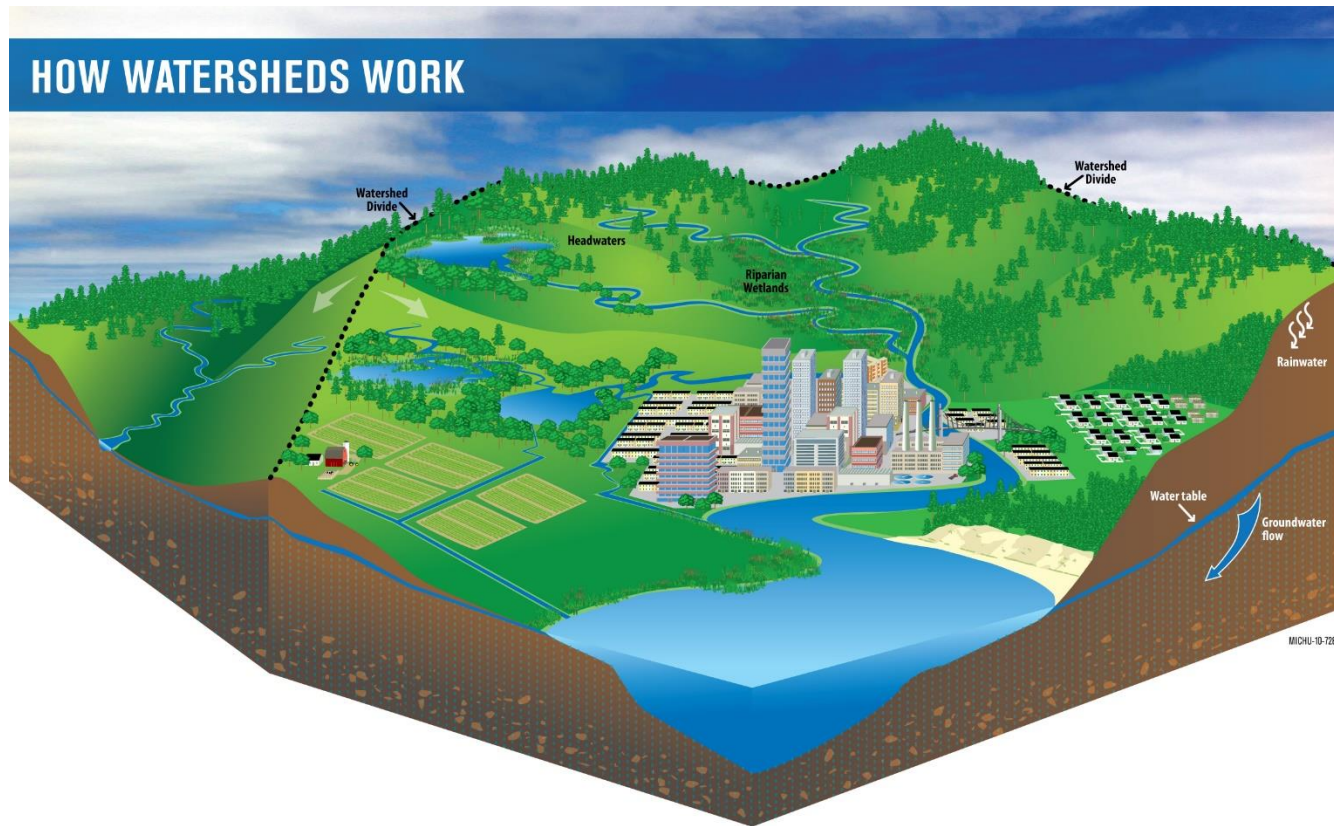
**Water that flows over land from rainfall or snowmelt, before it enters natural waterways**





# WATERSHEDS

Areas of land that drain to particular bodies of water.



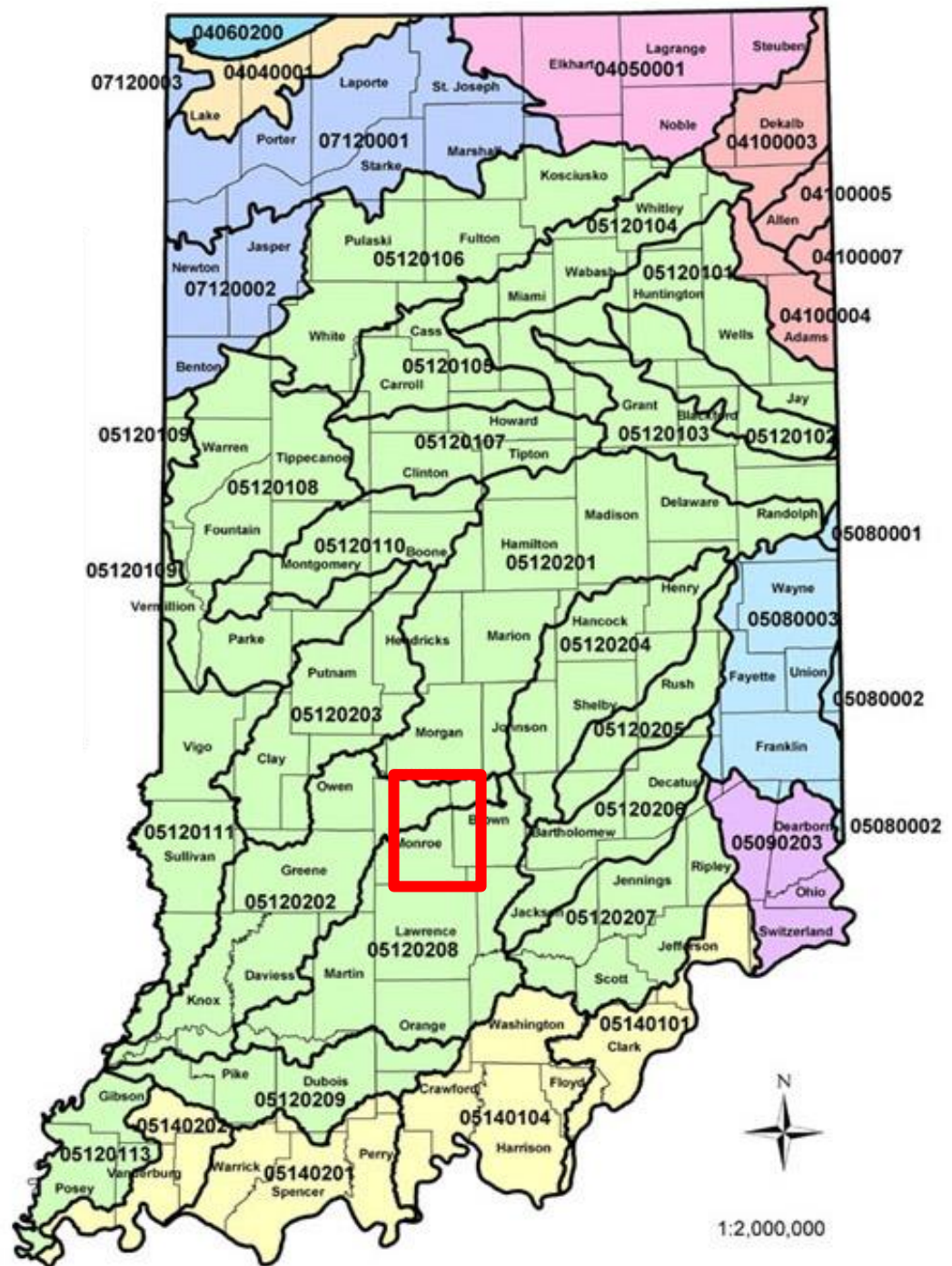
## Hydrologic Unit Code (HUC)

- A **standardized numbering system** so all can “speak the same language”
- The **smaller** the number, the **bigger** the watershed; the **bigger** the number, the **smaller** the watershed
- **HUC 12** most commonly used (smallest watershed)

# Indiana's Watersheds

An example:  
Shows the area of  
the major  
watershed divide  
in Bloomington.

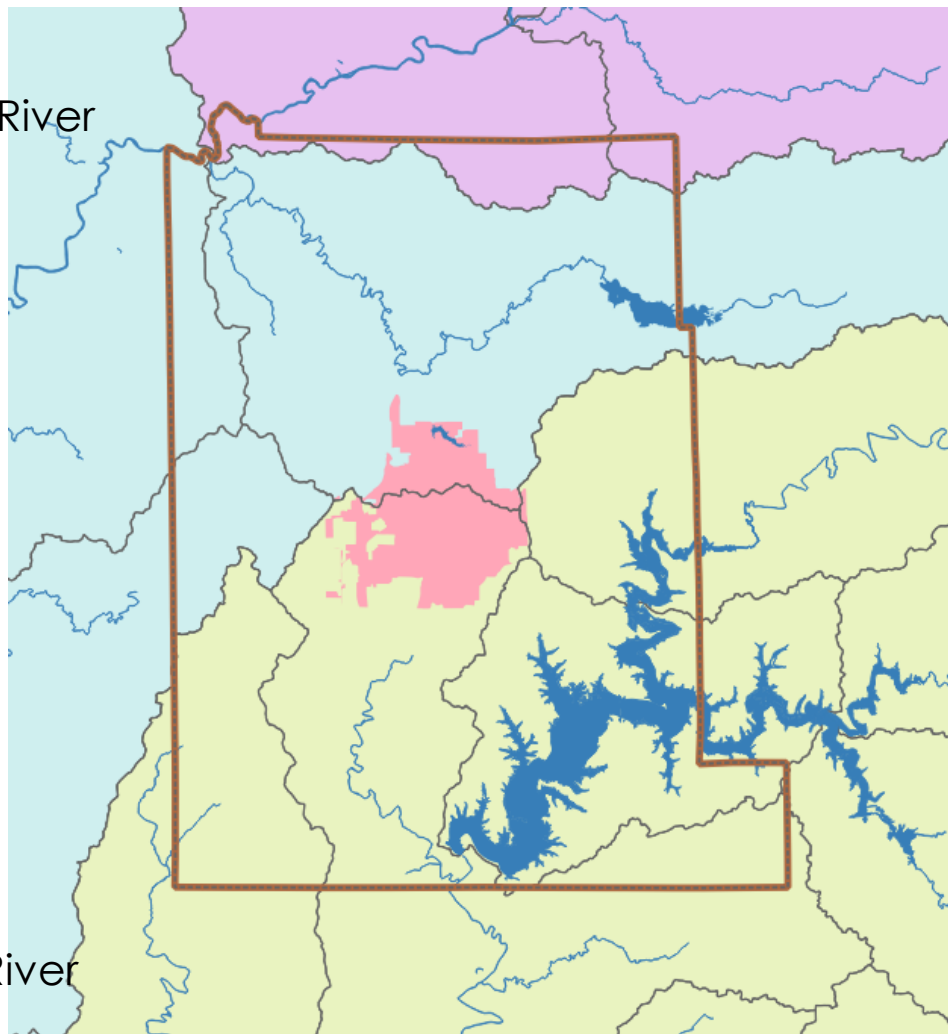
(Wabash River drainage)



← Drains to West Fork White River

## A closer look...

← Drains to East Fork White River





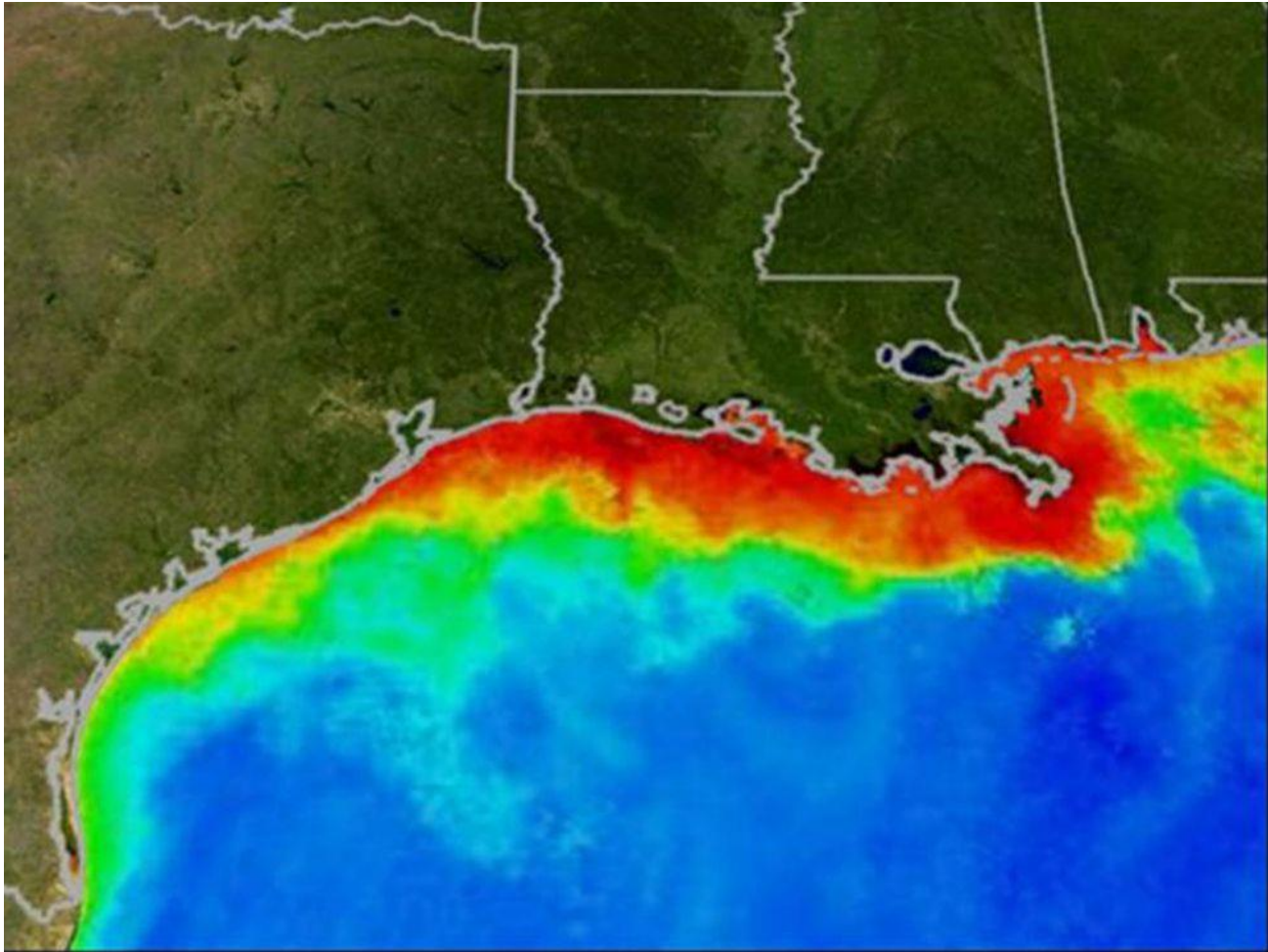
# Bloomington Impacts More

---



Bloomington:  
Jordan River  
Clear Creek  
East Fork of White River  
White River  
Wabash River  
Ohio River  
Mississippi River  
Gulf of Mexico and beyond





**Gulf of Mexico – “Dead Zone”**

# SEDIMENT



**The #1  
pollutant by  
volume in the  
State of  
Indiana**

# OUR CHANGING CLIMATE

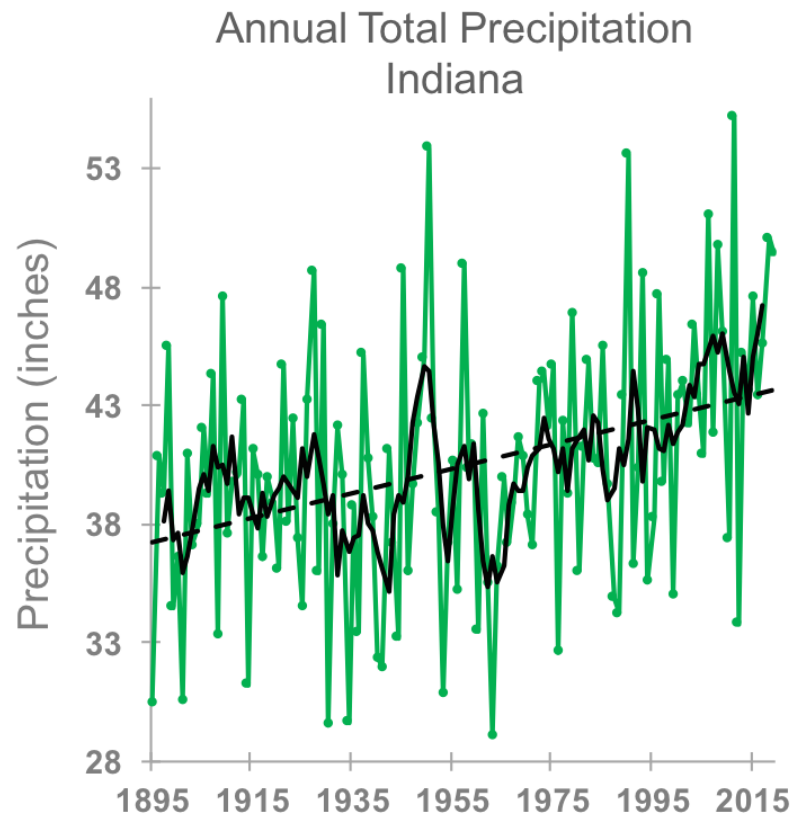
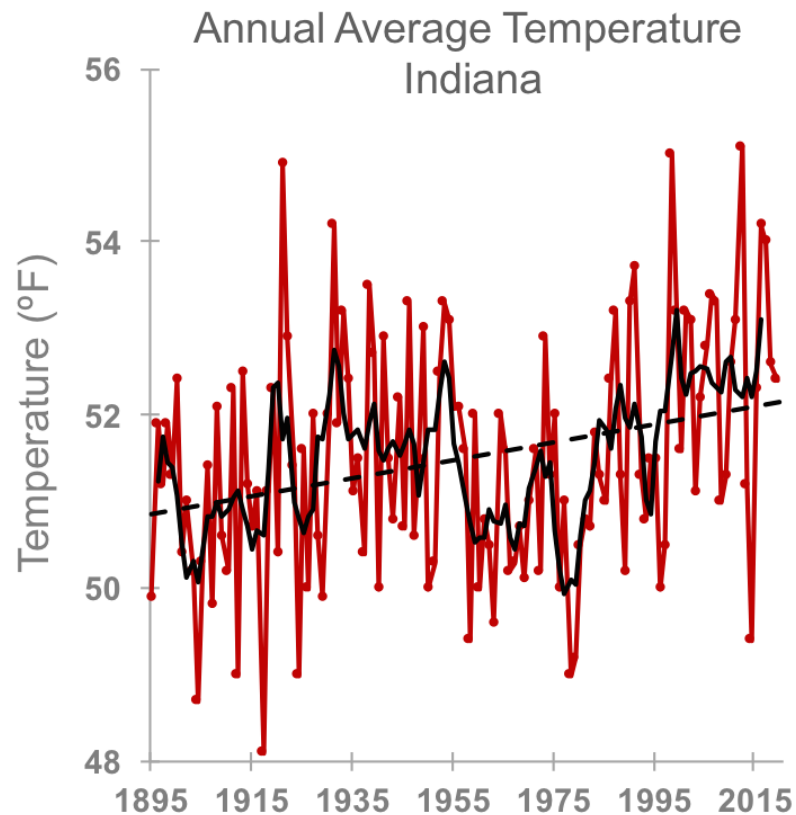
More frequent and intense rainfall events punctuated by longer periods of drought.

Remember  
February 7, 2019?





# Indiana is getting warmer and wetter



Climate Trends 1895-2019: Indiana has warmed 1.3°F and annual precipitation has increased 6.5”.

Reference: Purdue Climate Change Research Center





**The patterns are affecting us individually and societally, including:**

- **Infrastructure**
- **Agriculture, Health, Finances**
- **Overall quality of life**

We have an  
opportunity to make  
a difference.

**MAYOR  
JOHN  
HAMILTON**

**“As climate change makes stormwater challenges more frequent and severe, the city is committed to working with property owners to control flooding and mitigate future damage in environmentally responsible ways.”**



# RESIDENTIAL STORMWATER PRACTICES

- Rain gardens
- Bioswales
- Dry Creek Beds
- Detention or Retention Ponds
- Ditch Stabilization
- Driveway Culverts



# Questions?

Kriste Lindberg  
City of Bloomington Utilities  
Stormwater Education Specialist  
[lindberk@Bloomington.in.gov](mailto:lindberk@Bloomington.in.gov)