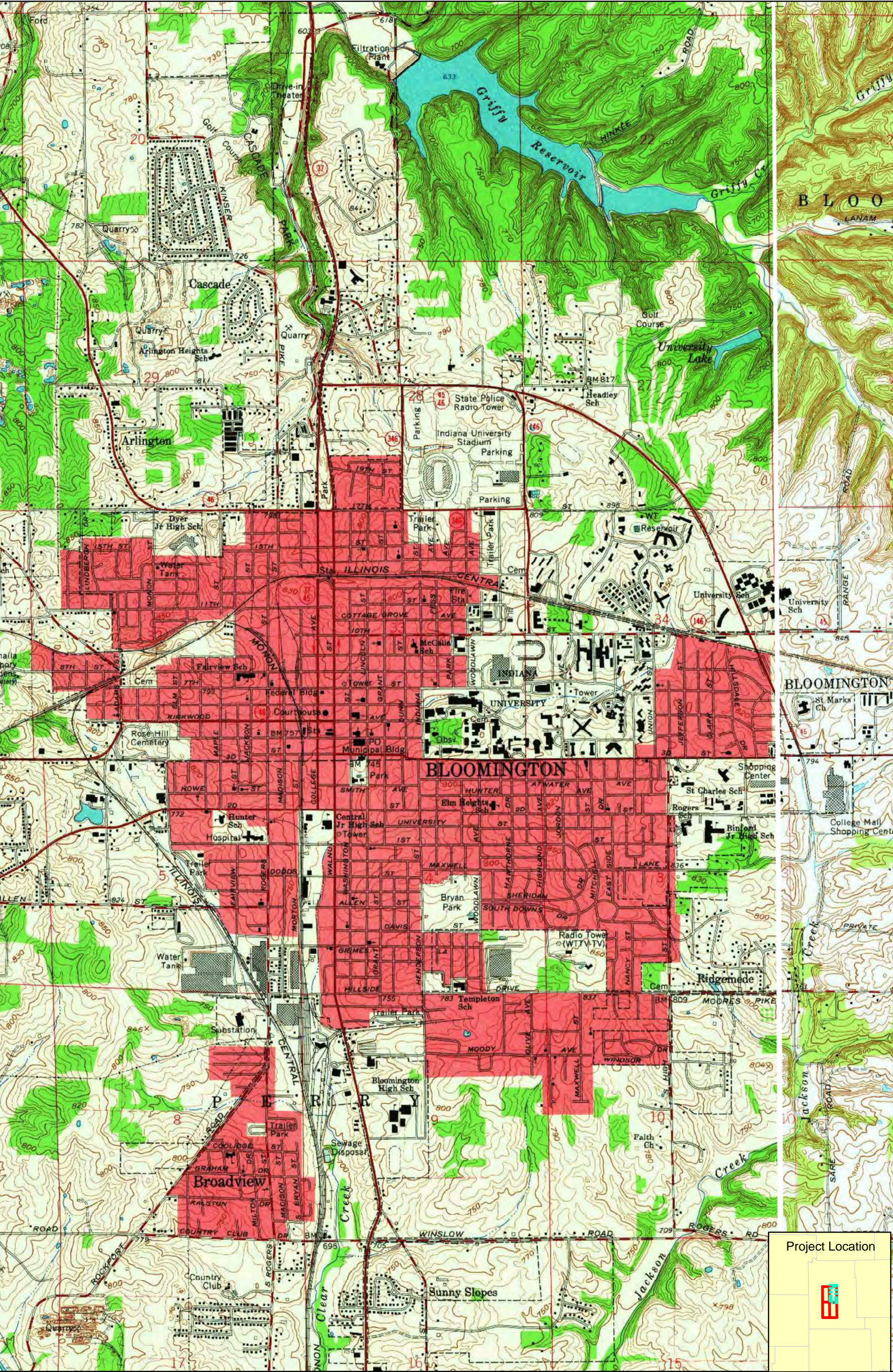


Project Location



Dimension Limestone Industry in the Bloomington, Indiana area, circa 1816 to 1967
Portion of the Bloomington (1965), Allens Creek (1966), Clear Creek (1965), and Unionville (1966)
USGS Topographic Quadrangle (1:24,000), Reference Map 2 of 4

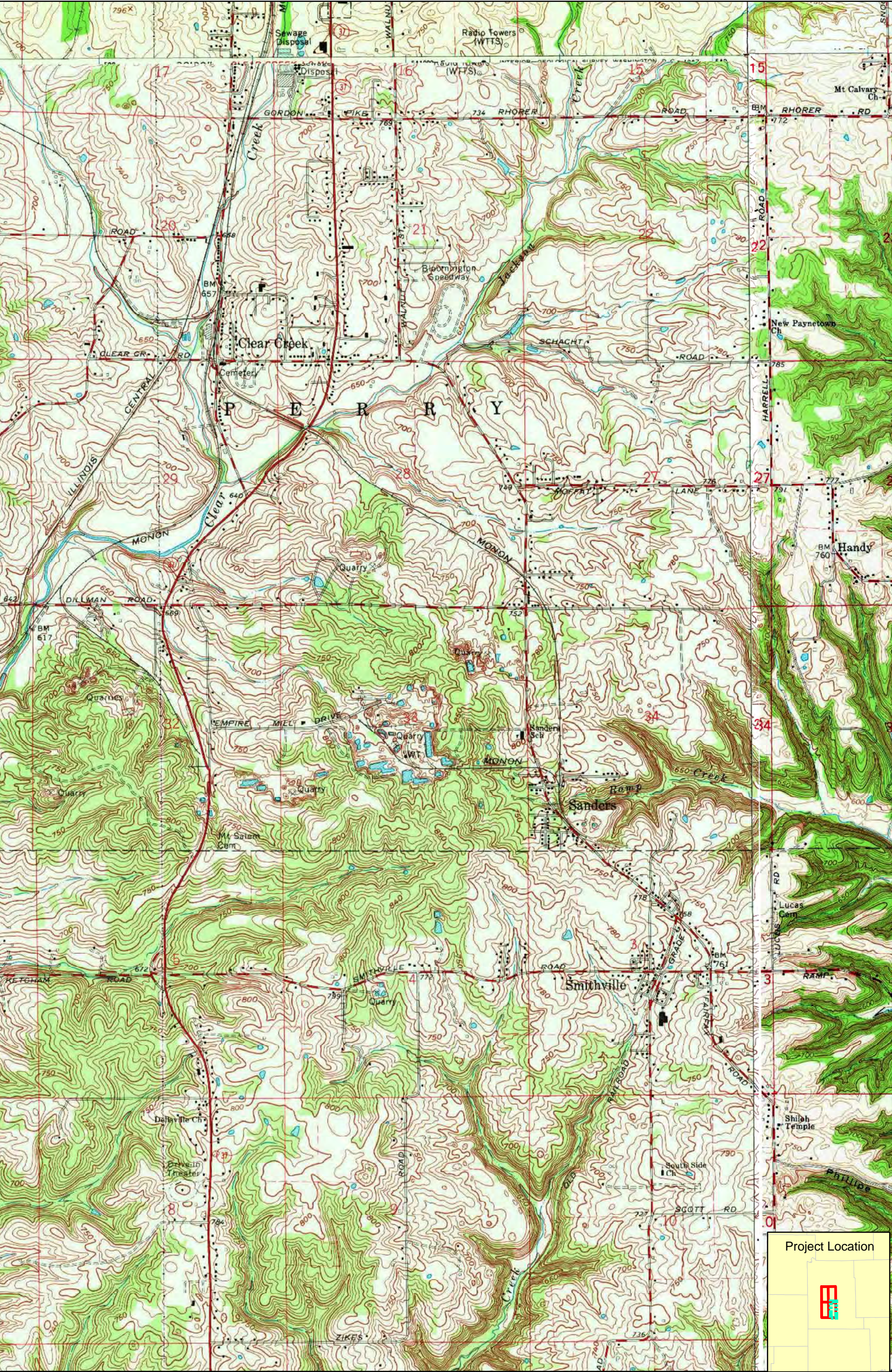


Project Location



Note: Information shown on this map is not warranted for accuracy or merchantability. GIS data used to create this map are from the best known sources existing at this time. However, experience shows that many national datasets are not all inclusive. Use of this map should be limited to planning, and should not replace field review or background checks with other sources. It is intended to serve as an aid in graphic representation only. This map does not represent a legal document.

Dimension Limestone Industry in the Bloomington, Indiana area, circa 1816 to 1967
Portion of the Bloomington (1965), Allens Creek (1966), Clear Creek (1965), and Unionville (1966)
USGS Topographic Quadrangle (1:24,000), Reference Map 3 of 4

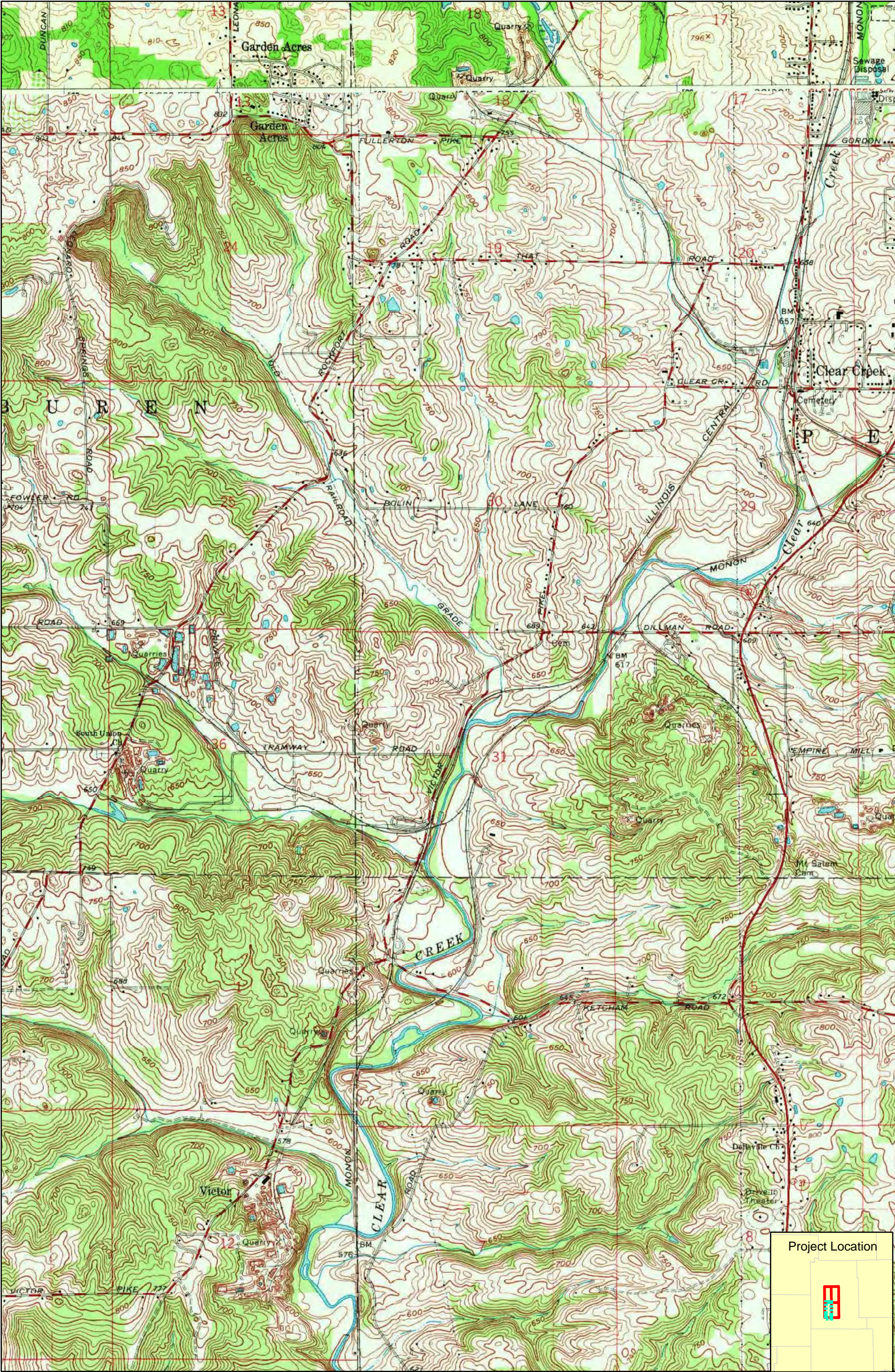


Project Location

0 1,300 2,600 5,200 Feet

Note: Information shown on this map is not warranted for accuracy or merchantability. GIS data used to create this map are from the best known sources existing at this time. However, experience shows that many national datasets are not all inclusive. Use of this map should be limited to planning, and should not replace field review or background checks with other sources. It is intended to serve as an aid in graphic representation only. This map does not represent a legal document.

Dimension Limestone Industry in the Bloomington, Indiana area, circa 1816 to 1967
Portion of the Bloomington (1965), Allens Creek (1966), Clear Creek (1965), and Unionville (1966)
USGS Topographic Quadrangle (1:24,000), Reference Map 4 of 4



Project Location



Note: Information shown on this map is not warranted for accuracy or merchantability. GIS data used to create this map are from the best known sources existing at this time. However, experience shows that many national datasets are not all inclusive. Use of this map should be limited to planning, and should not replace field review or background checks with other sources. It is intended to serve as an aid in graphic representation only. This map does not represent a legal document.