



**MONROE COUNTY BOARD OF COMMISSIONERS' AGENDA
MONROE COUNTY COURTHOUSE
JUDGE NAT U. HILL III MEETING ROOM
BLOOMINGTON, INDIANA
NOVEMBER 27, 2019
10:00 am**

- I. CALL TO ORDER**
- II. COMMISSIONERS' PUBLIC STATEMENT**
- III. PUBLIC COMMENT – FOR ITEMS NOT ON THE AGENDA, LIMITED TO 3 MINUTES**
- IV. APPROVAL OF MINUTES** **1**
 - **NOVEMBER 20, 2019**
- V. APPROVAL OF CLAIMS DOCKET**
 - **ACCOUNTS PAYABLE – NOVEMBER 27, 2019**
- VI. REPORTS**
 - **CLERK OF CIRCUIT COURT – OCTOBER 2019** **10**
 - **TREASURER – OCTOBER 2019** **12**
 - **WEIGHTS AND MEASURES – OCT 16 – NOV 15, 2019** **14**
 - **TRAFFIC/ROAD UPDATE**

VII. NEW BUSINESS

- A. MOVE TO APPROVE: HARRELL-FISH INC. MAINTENANCE & REPAIR AGREEMENT. 15**
FUND NAME: COUNTY GENERAL FUND NUMBER: 1000-0161
AMOUNT: \$39,812
Executive Summary: This agreement provides preventative maintenance and service of air conditioning, heating and water management equipment for MC facilities.
Angie Purdie, Commissioners' Administrator
- B. MOVE TO APPROVE: RATIFICATION OF MICHAEL CHAMBLEE PROPOSAL. 25**
FUND NAME: GO BOND 4810 FUND NAME: 4810-42250-0000
AMOUNT: NOT TO EXCEED \$40,000
Executive Summary: This proposal is for architectural design for the MC Health Building.
Angie Purdie, Commissioners' Administrator
- C. MOVE TO APPROVE: AGREEMENT WITH MONROE COUNTY SOLID WASTE 28**
MANAGEMENT GREEN BUSINESS.
FUND NAME: COUNTY GENERAL FUND NUMBER: 1000-36012-0161
AMOUNT: \$ 3,200/YEAR
Executive Summary: This agreement will provide recycling services for MC facilities.
Angie Purdie, Commissioners' Administrator
- D. MOVE TO APPROVE: AWARDDING BID TO CLR, INC. REGARDING REHABILITATION 35**
OF BRIDGE # 186 ON OLD DUTCH CHURCH ROAD.
FUND NAME: CUMULATIVE BRIDGE FUND NUMBER: 1135
Executive Summary: Bids were advertised and opened at a public meeting on November 20, 2019 in accordance with IC 36-1-12-4. Two bids were received and CLR, Inc. was the lowest, most responsive bidder. The contract will be brought to a future Commissioners' meeting for approval.
Lisa Ridge, Highway
- E. MOVE TO APPROVE: SUPPLEMENTAL AGREEMENT WITH DLZ INDIANA, LLC 42**
REGARDING VERNAL PIKE CONNECTOR.
FUND NAME: WESTSIDE ECONOMIC DEVELOPMENT FUND NUMBER: 4920
AMOUNT: \$200,325
Executive Summary: A significant design change has been made to help accommodate businesses located on Sunrise Greetings Court. This agreement was unanimously approved by the Redevelopment Commission.
Lisa Ridge, Highway

VIII. APPOINTMENTS

IX. ANNOUNCEMENTS

X. ADJOURNMENT



**MINUTES
MONROE COUNTY BOARD OF COMMISSIONERS'
NOVEMBER 20, 2019
NAT U HILL III MEETING ROOM
COURTHOUSE
BLOOMINGTON, IN**

The Monroe County Commissioners met in a regular meeting on November 20, 2019 at 10:00 a.m. with the following members present: Julie Thomas, President; Lee Jones, Vice President; and Penny Githens, Commissioner. Also present: Jordan Miller, Payroll Administrator; Jeff Cockerill, Attorney; Angie Purdie, Commissioners' Administrator; Lisa Ridge, Highway Director; and Anita Freeman, Deputy Auditor.

I. CALL TO ORDER

The meeting was called to order by Thomas

II. COMMISSIONERS' PUBLIC STATEMENT

Statement read by Jones

III. PUBLIC COMMENT – FOR ITEMS NOT ON THE AGENDA, LIMITED TO 3 MINUTES

- NONE

IV. APPROVAL OF MINUTES

- NOVEMBER 6, 2019
- NOVEMBER 13, 2019

Jones made motion to approve. Githens seconded.

Motion carried by voice vote.

V. APPROVAL OF CLAIMS DOCKET

- ACCOUNTS PAYABLE – NOVEMBER 20, 2019
- PAYROLL – NOVEMBER 22, 2019

Jones made motion to approve. Githens seconded.

(Miller) Total for Accounts Payable - \$1,815,969.77

- \$847,589.61 – Crider & Crider – Hartstrait Connector

- \$317,167.13 – Anthem BC/BS – Fees & Claims
 - \$224,086.75 – PSAP LIT Distribution
- Total for Payroll - \$1,520,367.54
- \$1,075,078.96 – Direct Costs
 - \$445,288.58 – Indirect Costs

After call for public comment, carried by voice vote.

VI. REPORTS

• TRAFFIC/ROAD UPDATE

- Fullerton Pike PH II: Gordon Pike/Rogers St area will be open December 13, 2019. Weather permitting.

VII. NEW BUSINESS

A. MOVE TO APPROVE: AGREEMENT WITH B-TECH LLC FOR ACCESS CONTROL AT YOUTH SERVICES BUREAU.

FUND NAME: 2015 GO BOND FUND NUMBER: 4806 AMOUNT: \$11,327.40

Jones made a motion to approve. Githens seconded.

(Eric Evans) These three agreements are actually part of the same project and we'll probably be able to get through these pretty quickly but we can take the little extra time to talk about what the project is for. These are three projects that are coming towards the end of our youth shelter expansion project that we've been doing here at Monroe County. This multi-million dollar expansion of our youth shelter and administrative facilities is going to allow the county to offer a lot more programs to the children that stay at our youth shelter. There is a large gymnasium/multi-purpose room that we're outfitting so that we can show instructional movies and things of that nature. There are class rooms that we're setting up with the technologies that they can have different programs out there for the children. But since we're getting to the end of the construction it's time to talk about putting in the video surveillance system and the card based access control systems there.

The first one on the agenda is actually the access control system. Basically they have select doors throughout the facility that are going to be secured by a card swipe system so that those parts of the facility are closed off to the children when they're not having a specific program there. It also will allow them to have greater security as far as the people that enter into the facility. But it will allow the staff of the facility that have their ID badges to move quickly just by swiping on a door lock. For this particular project we've partnered with a local company by the name of B-Tech that seems to be a promising good company for this sort of thing.

(Cockerill) I would ask that we approve this and the next two in addition to our standard form contract. I know they had given me this and I've reviewed these and I didn't have that in time to get this on the agenda. But the standard form contract for this one the particulars that are important are the e-verify portion of it, the insurance and the scheduling with our technical services department for the actual implementation of it. So those can be ready in 3 – 5 minutes

after this meeting but again that's just something that didn't have time to put on the formal agenda.

(Evans) And on that note I told the vendor that something of that nature was coming and showed him a sample of what we used in the past and they're in agreement I believe.

(Thomas) So we have that understanding, yes?

(Githens) I also wondered, it talks about the monthly web service reader fees and then below that it's got a price per month for the readers, how many readers do you anticipate them needing?

(Evans) I believe the quote is very specific actually on the amount of readers that we're putting in.

(Githens) You expect that to be a set number though it's not going to fluctuate?

(Evans) So the readers or the hardware that gets installed next to the door that you scan card on I believe-

(Githens) Ok, so I think there were seven readers and then one special one.

(Evans) Right, yes. Ok the reason why that pricing is on there is particular vendor rather than have the access control server be located on our premise they do that in the cloud so that's a continued subscription fee that we'll have per year.

(Thomas) But that's worth doing because if there's any issues.

(Evans) Yeah, it means we don't have to maintain the server ourselves ultimately we save a bunch of money doing that way.

(Githens) And what happens if the power goes out?

(Evans) So the readers themselves that are attached to the doors are run off a battery similar to the battery that is used for our servers. They are also set so that when that battery exhaust itself the door can be open from a fire safety stand point. But it's designed in such a way and the readers require such little power that that UPS battery can keep them running for quite some time. The one important clarification that I should have mentioned at the top, the bond that we're using to pay for this is the 2015 GO Bond - 4806, I told Anita that ahead of time but for your notes.

(Thomas) Is that through, it thought was in the newer bond which is why. So it's 2015, so we should have a fund number.

(Purdie) We do 4806.

(Thomas) 4806. Ok, sorry I heard three numbers. And that would be for all the items correct?

(Evans) Yes. Thank you for that. I had made the assumption it was the new bond because we didn't have a number.

After call for public comment, motion carried by voice vote.

(Thomas) And that's with the understanding that it is contingent on the contract being complete.

B. MOVE TO APPROVE: AGREEMENT WITH B-TECH LLC FOR VIDEO INTERCOM AT YOUTH SERVICES BUREAU.

FUND NAME: 2015 GO BOND

FUND NUMBER: 4806

AMOUNT: \$3,000

Jones made a motion to approve. Githens seconded.

(Evans) What this is it's also part of the access control system. This will be a video intercom that will be at the front door. So after hours when someone wants to have access to the facility they come up and will press a button and they will be presented with a screen that is just like out of the modern television show Jetson's, where that person sitting at the reception desk can see who that person is and buzz them in. The original specs that Viki had given us she wanted that to be one particular desk in the facility that would be the only desk that could be used for this purpose. The B-Tech vendor came up with a solution that's less expensive that enables us to use it at that desk but in a pinch they could actually do the same functionality at other administrative desks throughout the facility. It's a very nice set up.

(Githens) So this is strictly for viewing who's at the door they're not going to have a video running kind of thing.

(Evans) So actually for this one it also ties into the video system so that footage at the door is also being archived.

(Githens) And how long will it be archived?

(Evans) Actually I'll be able to address that in the next item.

(Thomas) Yeah, I was going to say that's in the next piece.

(Githens) I knew I'd read about it.

After call for public comment, motion carried by voice vote.

(Thomas) Again that's with the understanding its contingent on the addendum of the contract being approved.

C. MOVE TO APPROVE: AGREEMENT WITH B-TECH LLC FOR SURVEILLANCE SYSTEM AT YOUTH SERVICES BUREAU.

FUND NAME: 2015 GO BOND

FUND NUMBER: 4806

AMOUNT: \$27,501.85

Jones made a motion to approve. Githens seconded.

(Evans) This one is the main video system. To answer the question that Commissioner Githens had just posed, this is the on premise server that is going to keep this video. The other quotes that we got for this, the length of time we store this video is contingent on how much storage space how many hard drives we have there on the premise. The previous quotes that we got for this project called for a 4 terabyte server, this quote is actually for a 12 terabyte server, which is three times as good. But actually it literally means we will be able to keep the footage three times as long. Now how this camera system works is, things are only recorded and saved in that 12 terabyte server if it sees movement. Basically with all these cameras and the cameras are primarily there to provide for the safety of the children. You know a lot of people get a little concerned when you talk about surveillance cameras, but this is a facility that at any given time is housing over ten at risk children. It's important to have good surveillance. But essentially the cameras are potentially recording at any given time as long as they see movement. I believe with 12 terabytes of storage space we'll have a good 45 – 60 days' worth of storage material. In the last four years of me working here the amount of requests for footage that I've gotten from the Youth Services Bureau we normally find out about incidents there within a day or two. They know about it very quickly. I've never had to go back more than a couple of weeks. So I honestly feel that this system will keep things for a very lengthy time and I think the staff there will be happy from that stand point. Having said that the server is modular so that we can add more storage space if we need. But to put this into perspective the server we put in in the Justice Building has 8 terabytes so this is that much better.

(Githens) Will these cameras pick up cars going past?

(Evans) So on that typically the majority of the cameras that are in the facility are actually inside the building. Now there are a number of cameras that are mounted on the outside that will be focused primarily right on the land directly around the building and then on the parking lot. What we have found is sometimes when you have a camera that's focused to get the parking lot you do sometimes see traffic in the distance. In the software you can actually mark out sections of what that camera captures that it does not trigger with, if that makes sense. So if you have a camera with a forced perspective and the traffic is going on up here, you just within the camera software you say for this zone if you see movement don't activate.

(Thomas) I understand in the gym because the ceiling is so high but the dome lights are the ones, the dome cameras are the ones that are flushed to ceiling is that correct?

(Evans) In general I think in the gym I think we're talking about hanging dome cameras-

(Thomas) Right, but the other ones, there's 27, they're actually on the ceiling right?

(Evans) Their placement has been carefully planned to plan for potential people trying to pull them off.

(Thomas) That's why I'm asking.

(Evans) That's what I figured. Extensive discussion has gone in as to where we place the cameras to keep those pesky residents out at the youth shelter from sabotaging them.

(Githens) I can't wait to see this when it's really completed.

(Thomas) Yeah. I was going to ask Angie what the date was now because it was supposed to be at the end of this year.

(Evans) Yeah, I believe that they're planning on having a ribbon cutting in December. That's one of the reasons why we're moving so quickly on these projects.

(Githens) Good.

After call for public comment, motion carried by voice vote.

(Thomas) Again that's again with the understanding its contingent on a final contract being approved.

D. MOVE TO APPROVE: RESOLUTION 2019-37: REGARDING HIGHWAY DEPARTMENT SURPLUS PROPERTY.

FUND NAME: N/A

FUND NUMBER: N/A

AMOUNT: N/A

Jones made motion to approve. Githens seconded.

(Cockerill) I got a report from the highway department that they have a 1992 Freightliner and a 2005 Chevrolet Malibu that is no longer able to perform in a way that suits the county's needs. So this resolution merely describes it is surplus so that we can move on from these vehicles.

(Ridge) Actually we've declared a lot of surplus this summer with Jeff's help. I deal with Govdeals actually instead of doing an onsite auction. So we have recouped so much more cost doing it this way and putting it back into the MVH fund. This is just two of the last items we have to put into there and then we can actually buy equipment with those extra funds.

(Thomas) So if you want to buy an old Malibu go to gov deals-

(Ridge) GovDeals.com. Anybody can create an account, anyone can buy it. It's used by INDOT, IU is one of their biggest clients. So we just tried it out this year and it's worked out great. We don't have to haul it anywhere, it's picked up and it's perfect.

After call for public comment, motion carried by voice vote.

E. MOVE TO APPROVE: INDIANA PUBLIC EMPLOYERS' PLAN, INC. GRANT AWARD.

FUND NAME: MOTOR VEHICLE HIGHWAY

FUND NUMBER: 1176

AMOUNT OF AWARD: \$9,300.78 /LOCAL MATCH: \$2,325.19

Jones made motion to approve. Githens seconded.

(Ridge) You might want to amend your motion-

(Thomas) Yes.

(Ridge) because the local match is the \$2325.19

(Thomas) We actually have grant amount coming in that's a revenue and that is -

(Ridge) \$9,300.78

(Thomas) There we go that's on the sheet. I think actually we're ok because we've talked about the match part which is actually coming out of local so-

(Purdie) This isn't a contract this is an award-

(Thomas) No I know it's a grant. But we are going to have to put money in right. That's our match is the \$2325, correct?

(Ridge) Correct.

(Purdie) But I think we were trying to, we had this conversation a couple of weeks ago and I thought we agreed to just go with how much is being received since it's an upfront payment.

(Cockerill) I think when we talk about the match I think it's important that we note that there is a match and the amount. But I think what we're actually agreeing to is that, yes we will accept the \$9,300-

(Thomas) So do you want to go ahead and amend the motion?

(Jones) Move to approve: Indiana Public Employers' Plan, Inc. grant award. Fund name: Motor Vehicle Highway, Fund number: 1176 and there's a matching amount of \$2,325.19 and the county is being awarded \$9,300.78.

(Githens) Second.

(Thomas) Ms. Ridge tell us about this.

(Ridge) We applied for this grant and it was awarded on November 1st. It's the first time we've applied for the grant. The nature of it is to purchase safety equipment and/or signage for the

crews out in the right-of-way. What we submitted was new work zone signage, stop paddles, harnesses, barricades, traffic cones and drums for all the crews that are working within the right-of-ways. That's what the funds will be used for.

(Jones) Very good news.

(Thomas) This is a grant that we haven't ever really applied for-

(Ridge) We had never applied for it. Hopefully we'll do it every year.

(Thomas) I was going to say this is a very good thing. Excellent work finding it and applying and getting it. Good work to you and your staff.

After call for public comment, motion carried by voice vote.

VIII. APPOINTMENTS

- NONE

IX. ANNOUNCEMENTS

- A comprehensive look at Criminal Justice review in Monroe County will be held November 20, 6:30pm at the Unitarian Universalist Church Meeting Room, 2120 N Fee Lane. Public invited to attend.
- The Stride Coalition held a press conference Tuesday, November 19, 2019 at the Switchyard Park announcing grant funding received from IU Foundation to open a Crisis Diversion Center. The center will be located in the basement of the county parking garage.
- Accepting applications for all boards and commissions. Plat Committee currently has two openings. For more information about the boards and commissions you may go to www.co.monroe.in.us.
- Next Commissioners' Meeting: November 27, 2019, 10am in the Nat U Hill meeting room, 3rd floor of the courthouse.

X. ADJOURNMENT

The minutes of the November 20, 2019 Board of Commissioners' meeting were approved on, November 27, 2019.

Monroe County Commissioners

Ayes:

Nays:

Julie Thomas, President

Julie Thomas, President

Lee Jones, Vice President

Lee Jones, Vice President

Penny Githens

Penny Githens

Attest:

Catherine Smith, Auditor

MONTHLY REPORT - CLERK OF THE CIRCUIT COURT
Required by IC 33-17-2-8

FILED
NOV 20 2019

MONTHLY REPORT OCTOBER 2019

Catherine Smith
Auditor Monroe County, Indiana

Charges:

1	Fees payable to the State	\$	492,772.95
	JC - Reimbursements	\$	-
	FSSA Support		
2	Fees payable to the county	\$	114,104.81
3	Bank Discrepancy	\$	4,503.70
4	Trust Funds (Bonds/Other)	\$	1,999,263.71
5	Trust, Refunds	\$	17.00
6	Trust, Judgment Collections	\$	15,852.12
	ISETS Child Support Collections	\$	7,837.90
	Interest-bearing Accounts Payables	\$	78,632.77
	Cash on Hand	\$	1,500.00
7	Total Charges	\$	2,714,484.96

Credits

8	Certificate of deposit		
9	Certificate of deposit		
10	Certificate of deposit		
11	Monroe County Bank Account	\$	2,626,514.29
	Monroe Bank Account - Ledger		
	Old Judgment Collections		
	ISETS Child Support	\$	7,837.90
	Interest-Bearing Saving Account	\$	78,632.77
12	Subtotal: Daily Balance Record (Lines 8-11)		
13	ISETS Monthly Clerk's Support Record	\$	-
14	Total Depository Balances as shown by Records	\$	2,712,984.96
15	Investments on Hand at the close of business	\$	-
16	Cash in office at the close of business	\$	1,500.00
17	Total	\$	-
18	Cash Short		
19	Cash Long		
20	PROOF (Line 7)	\$	2,714,484.96

21	Balance in All Depositories	\$	2,868,858.20
22	Deduct: Outstanding Checks	\$	(183,723.38)

23	Net Depository Balance		
24	Deposits in Transit	\$	36,082.65
25	Bank Fees	\$	160.00
26	Interest		
27	Miscellaneous Adjustments (explain fully)	\$	(9,585.51)
28	Participant recoupments	\$	1,130.00
29	Agency recoupments	\$	63.00
30	Balance in all Depositories (line 14)	\$	2,712,984.96
31	PROOF	\$	2,712,984.96

State of Indiana, MONROE County: ss: I, the undersigned Clerk of the Circuit Court in and for the afresaid county and state, do hereby certify that the foregoing report is true and correct to the best of my knowledge and belief and as appears of record now on file in this office.

Yvonne Lynne Browne
(SEAL)

Clerk, Monroe Circuit Court

ISETS: Over \$406.20	-406.20
Adjustment for CC & ACH items in transit	4,770.38
Credit Card deposited in Bank	-9,963.74
ACH ST of IN Payables	-6,867.00
State dated/reissued checks cashed	267.00
Return Bank Fees	
Other Adjustments	2,614.05
Total Misc Adjustments	-9,585.51

Copy for Commissioners
Copy for Board of Finance
Copy for State Board of Accounts @
E418 Government Center South
Indianapolis, IN 46204

COUNTY TREASURER'S MONTHLY REPORT

Required by IC 36-2-10-16 and IC 5-13

Month ending

October

2019 MONROE COUNTY

CHARGES:

1 Total Taxes Collected (Not Receipted to Ledger or Refunded).....	\$ 23,040,380.76
2 Advance Collection of Taxes.....	2,476.99
3 Bank, Building and Loan and Credit Union.....	0.00
4 Barrett Law Collections.....	0.00
5 Cash Change Fund.....	1,000.00
6 Conservancy District Collections.....	0.00
7 Demand Fees.....	0.00
8 Dog Tax.....	0.00
9 Drainage Assessments.....	0.00
10 Excess Tax Collections.....	0.00
11 Gross Income Tax on Real Estate.....	0.00
Wheel & Surtax.....	353,291.93
12 Vehicle license Excise Tax.....	5,397,330.27
13 Sewage Collections.....	0.00
14 Tax Sale Costs.....	0.00
15 Aircraft License Excise Tax.....	1,450.70
16 Auto Rental Excise Tax.....	148,321.39
17 Watercraft Title and Registration Fees (Boat Excise Tax).....	134,969.80
18 Lotto Excise Tax Cut.....	1,592,038.21
19 Heavy Equipment Rental.....	114,125.57
20.....	
21 Total Balances of all Ledger Accounts - Cash.....	73,192,877.72
22 Total Balances of all Ledger Accounts - Investments.....	0.00
23 Total Charges.....	\$ 103,978,263.34

CREDITS:

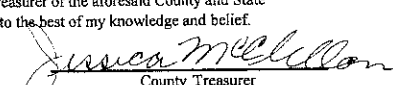
24 Depository Balance as Shown by Daily Balance of Cash and Depositories Record (List in Detail on Reverse Side).....	\$ 84,190,100.15
25 Investments as Shown by Daily Balance of Cash and Depositories Record Column 12, Line 41.....	\$ 19,787,163.19
26 Total Cash on Hand at Close of Month:	
Currency.....	\$ 900.00
Coins.....	100.00
Checks, Money Orders, etc.....	0.00
Total.....	\$ 1,000.00
27.....	
28.....	
29.....	
30 Total.....	\$ 103,978,263.34
31 Cash Short (add).....	0.00
32 Cash Long (Deduct).....	0.00
33 Proof.....	\$ 103,978,263.34 \$ 103,978,263.34
34 Balance in all Depositories Per Daily Balance Record (Line 24 Above).....	\$ 84,190,100.15
35 Outstanding Warrant-Checks (Detail by Depositories on Reverse Side).....	(1,544,759.50)
36 Balance in all Depositories Per Bank Statements (Detail on Reverse Side).....	\$ 85,920,044.91
37 Deposits in Transit (Detail on Reverse Side).....	(185,185.26)
38 Proof.....	\$ 85,920,044.91 \$ 85,920,044.91

ANALYSIS OF CASH ON HAND AT CLOSE OF MONTH:

(a) Cash Change Fund Advanced by County.....	\$ 1,000.00
(b) Receipts Deposited in Depositories.....	
(c) Uncollected Items on Hand (List on Reverse Side).....	
(d) Total (Must Agree With Line 26 Above).....	\$ 1,000.00

State of Indiana, Monroe County: SS: I, the undersigned treasurer of the aforesaid County and State hereby certify that the foregoing report is true and correct to the best of my knowledge and belief.

Dated this 15th day of October 2019


County Treasurer

Note: Prepare in quadruplicate, retain one copy and give three copies to the County Auditor.

Original (White) -To be filed with County Auditor for Board of Finance.

Duplicate (Blue) - To be filed with County Auditor for Board of Commissioners.

Triplicate (Pink) -To be filed with County Auditor for transmission to State Board of Accounts.

Quadruplicate (Canary) -To be retained by County Treasurer.

FILED

NOV 15 2019


Auditor Monroe County, Indiana

COUNTY TREASURER'S

Required by IC 36-2-10-16
and IC 5-13

MONROE COUNTY
Month ending
October 31, 2019

STATEMENT OF DEPOSITORY BALANCES AT CLOSE OF MONTH
deposits+outstanding+BB balance=CB bal come back to cashbook balance

Oct-19

Name and Location of Depository	Balance Per Bank Statements	Deposits in Transit	Outstanding Warrant-Checks	Balance Per Daily Balance Cash & Depositories	
001 - FFB Operating 1242	\$7,597,031.16	(\$12,813.98)	(\$1,511,463.47)	\$6,072,763.71	
002 - FFB Payroll 3328	\$0.00	\$0.00	(\$33,306.03)	(\$33,306.03)	
003 - FFB Sweep 6040	\$0.30	(\$0.30)	\$0.00	\$0.00	
004 - FFB PERF 5596	\$0.00	\$0.00	\$0.00	\$0.00	
005 - FFB Credit Card 5324	\$33,721.07	\$513.20	\$0.00	\$34,234.27	
006 - FFB General 5535	\$74,058,889.49	(\$165,838.70)	\$0.00	\$73,893,050.79	
013 - German American 3108	\$29,410.83	(\$18.72)	\$0.00	\$29,392.11	
014 - TI TRECS 0001	\$2,008,765.15	(\$3,817.46)	\$0.00	\$2,004,947.69	
016 - Redev-80-0306-02-9	\$2,192,226.91	(\$3,209.30)	\$0.00	\$2,189,017.61	
Depository Totals	\$85,920,044.91	(\$185,185.26)	(\$1,544,759.50)	\$84,190,100.15	<-Depository Balance
007 - MS7203004 road & street	\$2,137,483.08	(\$6,336.23)	\$0.00	\$2,131,146.85	
008 - MS7203017 cum bridge	\$3,207,871.28	(\$9,509.22)	\$0.00	\$3,198,362.06	
009 - MS7202940 aviation gen	\$191,515.56	(\$567.73)	\$0.00	\$190,947.83	
010 - MS7202979 aviation constr	\$425,178.36	(\$1,260.37)	\$0.00	\$423,917.99	
011 - MS7202924 aviation building	\$636,912.32	(\$1,888.07)	\$0.00	\$635,024.25	
012 - MS7202953 property re-assesmt	\$522,960.29	(\$1,550.28)	\$0.00	\$521,410.01	
016 - Redev-80-0146-01-1	\$0.00	\$0.00	\$0.00	\$0.00	
017 - Redev-80-0267-02-3	\$57,339.65	(\$83.05)	\$0.00	\$57,256.60	
018 - Redev-80-0267-01-5	\$191.26	(\$0.28)	\$0.00	\$190.98	
019 - Redev-80-0306-01-1	\$373.43	(\$0.53)	\$0.00	\$372.90	
020 - Redv com 80-0306-03-7	\$295,526.73	(\$428.02)	\$0.00	\$295,098.71	
021 - Bank of New York Mellon/Holdings	\$12,401,080.69	(\$67,689.37)	\$0.00	\$12,333,391.32	
022-ONB MC18 Bond Int 80-0386-01-3	\$43.73	(\$0.04)	\$0.00	\$43.69	
023-ONB MC18 Constr 80-0386-03-9	\$0.00	\$0.00	\$0.00	\$0.00	
024-ONB MC18 Surplus 80-0386-02-1	\$0.00	\$0.00	\$0.00	\$0.00	
Investment Totals	\$19,876,476.38	\$0.00	\$0.00	\$19,877,163.19	<-Investments Balance
					Warrants & Deposits
					In Transit
Totals	\$105,796,521.29	(\$274,498.45)	(\$1,544,759.50)	\$103,977,263.34	\$1,819,257.95

* Interest

** Outstanding Checks

***Reconciling item per St Bd of Accts

****Bank Error

ADVANCE CKS FOR SETTLEMENT

(Checks and other items returned by depositories and in process of collection at close of month)

Date Originally Received	Received From	For	Date Returned	Returned by (Name of)	Reason for Return	Amount
Total						

Note: If additional space is needed attach sheet giving above information for all items.



WEIGHTS AND MEASURES MONTHLY REPORT
State Form 44196 (R2/10-99)

INDIANA
A State that Works

Indiana Division of Weights & Measures
Shadeland Ave., Ste D3, Indianapolis, Indiana 46
Office: (317) 356-7078 * Fax: (317) 351-2878
www.in.gov

Inspector: Scott A Sowder

Jurisdiction: Monroe

Date: 16-Oct to 15-Nov 2019

INSPECTION ACTIVITIES	STATISTICAL			
	Correct	Rejected	Confiscated	TOTAL
SCALES				
Vehicle - State Police	1			1
Vehicle - State Inspection				
Vehicle - City or County				
Railroad Scales				
Belt Conveyor Scales				
Livestock Scales				
Portable & Dormant Scales	6			6
Hopper Scales				
Computing Scales	92	8		100
Suspension Scales	1			1
Prescription Scales	4	1		5
Gram Scales				
Non-Commercial Scales	7	1		8
MEASURING DEVICES				
LPG Meters				
CNG Meters				
Vehicle Truck Meters				
Gasoline, Kerosene, Diesel Tests	12	3		15
High Flow Diesel Tests				
Mass Flow Meters				
Taxi Meters				
Timing Devices				
CALIBRATIONS AND TESTS				
Commercial Weights				
Prescription Weights	45			45
Wheel Weighers				
Test Weights				
Liquid Measures				
Linear Measures				
Miscellaneous				
OTHER ACTIVITIES				
Packages Checked	245			245
Packages Controlled	916	25		941
LP Gas Cylinders				
Octane samples				
Measuregraphs				
Misc. Determinations				
GRAND TOTAL	413	13		426

NARRATIVE

(Explain Miscellaneous Tests and Activities)

Fuel Complaints

I received 2 fuel complaints this month. On one the customer claimed that they were able to get more fuel into their vehicle than it could hold This one turned out not to be an issue. The second complaint the customer claimed that the dispenser continued to run after the trigger was released on the nozzle. On this one I was able to re-create the issue. The dispenser in question was red tagged and taken out of service until repaired.

Wrestling Scales

I completed the remaining High School Wrestling scales in the county this month. I still have to complete the Middle School scales but am having difficulty getting them scheduled. I hope to have these complete in the next few days.

Violations

I had to write a violation to one of the county's grocery stores this month. The store has been warned about calling the Weights & Measures department when scales are replaced numerous times in the past.

Package Checking

With Thanksgiving quickly approaching, I was able to get some package checking completed this month. I did find some issues but they were taken care of promptly. I will be following up at these locations in the next couple of months.

FILED

NOV 21 2019

Catherine Smith
Auditor Monroe County, Indiana

MONROE COUNTY BOARD OF COMMISSIONERS

Date to be heard: 11/27/2019

Item for Formal Meeting? ☒
(Ex: Routine items, continuing grants)

OR

Item for Work Session / Discussion ☐
(Ex: Public interest items, Ordinance changes, new grants and grants that add personnel)

Title of item to appear on the agenda:
Include VENDOR's Name in title if appropriate

HFI Commercial equipment inspection,
maintenance and repair agreement

All Grants must complete the following

Is this a grant request? Yes ☐

New Grant to the County? Yes ☐

Grant Type:

Reimbursement/Drawdown ☐

Up Front Payment ☐

County IS Pass Through ☐

Federal Agency:

Federal Program:

CFDA #

Federal Award Number and Year:

Or other identifying number

Pass Through Entity

Amount Received

Federal:

State:

Local Match:

Total Received:

Contracts/Agreements/MOU- Interlocal/Ordinance/Resolution/Grant item:

Fund Name: County General

Fund Number 1000-0161

Amount: \$39,812 for preventative maint.

If there is a monetary number in the Amount Box, you HAVE to include the Fund Name & Number. IF this is a grant waiting on the creation of a Fund Name & Number, indicate that in the boxes.

Executive Summary:

The agreement provides for preventative maintenance and service of air conditioning, heating, and water management equipment serving the following facilities:

Showers, Justice, Curry, Fiscus, Johnson, Health, YSB, Highway garage and County Parking garage.

The Courthouse heating and cooling is maintained by County maintenance, however this agreement does provide for a reduced repair fee in the event services are required.

Repair outside of a scheduled maintenance and inspection will be invoiced at all County owned buildings at a discounted rate of \$80.00/hour (7am - 3:30pm) and \$101/hour (emergency call out).

Person Presenting: Angie Purdie

Department: Commissioners

Attorney who reviewed: Jeff Cockerill

County Legal Review required prior to submission of this form for all contracts

Submitted by: Angie

Date: 11/15/19

Each agenda request and all necessary documents to the Auditor's Office (Anita Freeman) at: afreeman@co.monroe.in.us AND to the Commissioner's

Office e-mail: Commissionersoffice@co.monroe.in.us



Mechanical & Building Solutions

2010 Vernal Pike; P.O. Box 1998, Bloomington, IN 47402-1998

812-339-2579

www.harrell-fish.com

2020-2023 COMMERCIAL EQUIPMENT INSPECTION AND MAINTENANCE AGREEMENT

Harrell-Fish Inc. agrees to provide air conditioning, heating, water management equipment inspection, scheduled maintenance and repairs according to the terms and conditions herein to (hereafter referred to as Customer):

**Monroe County Commissioners
The Courthouse, Room 322
Bloomington, IN 47404
(812) 349-2550**

For Facility Site:

**Showers Building
501 North Morton Street
Bloomington, IN 47404**

**Justice Building
301 North College Avenue
Bloomington, IN 47404**

**Curry Building
214 West 7th Street, Suite #200
Bloomington, IN 47404**

**Fiscus Building
304-310 North Morton Street
Bloomington, IN 47404**

**Johnson Building
400 West 7th Street
Bloomington, IN 47404**

**Health Department
119 West 7th Street
Bloomington, IN 47404**

**Youth Services Bureau
615 South Adams Street
Bloomington, IN 47403**

**Highway Garage
2800 South Kirby Road
Bloomington, 47403**

**Parking Garage
220 North Morton Street
Bloomington, IN 47404**



"Truly Exceptional Client Service"

State Plumbing Commission No. CO89100025

An Equal Employment Opportunity Employer



A. Harrell-Fish Inc. Shall:

1. Perform scheduled maintenance and inspection as outlined in this Agreement as detailed in the contract.
2. Scheduled maintenance and inspection shall be on only equipment listed in Exhibit "A".
3. Contact Customer at least three days prior to arriving on site to perform preventative maintenance and inspection.
4. Furnish Customer with a written report of each inspection and of any conditions which require repairs or corrective action. If authorized by the
5. Customer, HFI will make the needed repairs at the Customer service rate listed in the Agreement.
6. Perform scheduled maintenance and inspection functions as a part of the Agreement fee to include:

Furnaces

- Test CO2 levels
- Clean as needed
- Check gas pressure
- Change air filters
- Check operation
- Inspect/Clear flue pipes
- Check thermostats
- Check operating controls
- Check safety controls
- Check electrical connections

Condensing Units

- Clean condenser coils
- Check operating controls
- Check safety controls
- Check refrigerant
- Check electrical connections

Cooling Coils

- Check and clean condensate pans and pipe (install drain tablets)
- Check condition of coil, clean as needed

Liebert Units

- Lubricate necessary bearings and motors
- Check evaporator coils
- Check operation
- Check thermostat/controls system
- Change air filters
- Check and clean condensate pan and pipe (install drain tablets)

- Check and adjust operating controls
- Check and adjust safety controls
- Clean condenser coils

Air Handlers

- Lubricate necessary bearings and motors
- Check evaporator coils
- Check operation
- Check thermostats/controls system
- Change air filters
- Check and clean condensate pan and pipe (install drain tablets)
- Check and adjust operating controls
- Check and adjust safety controls

Boilers

- Analyze burners
- Check gas pressure
- Check program settings
- Check pressure drop
- Check ignitor/heat exchangers

Water Cooled Chillers

- Brush tubes
- Check actuators
- Check electrical connections
- Check controls
- Meg compressor motors
- Take oil samples and send off for analysis

Water Heaters

- Check operation
- Blow down as needed

Chilled Water Pumps

- Check operation
- Lubricate motors and bearings

Heating Water Pumps

- Check operation
- Lubricate motors and bearings

Return Air Handlers

- Lubricate necessary bearings and motors
- Check evaporator coils
- Check operation

- Check thermostats/controls system
- Change air filters
- Check and clean condensate pan and pipe (install drain tablets)
- Check and adjust operating controls
- Check and adjust safety controls

Supply Air Handlers

- Lubricate necessary bearings and motors
- Check evaporator coils
- Check operation
- Check thermostats/controls system
- Change air filters
- Check and clean condensate pan and pipe (install drain tablets)
- Check and adjust operating controls
- Check and adjust safety controls

Cooling Towers

- Clean sump
- Clean nozzles
- Check fill valves
- Drain
- Evaluate Operation
- Monthly Check: check spray nozzles, belts, sensors, operation, drainage

Hot Water Circulation Pumps

- Lubricate bearings and motors
- Check couplers
- Check and record condition

Mixing Valves

- Check operating temperatures
- Check for leaks

Variable Air Volume Boxes

- Check operation
- Clean as needed

Fin Tube Radiators

- Check and clean as needed
- Check heat operation
- Check for leaks

Fan Coil Units

- Check and clean as needed
- Check heat operation

- Lubricate applicable bearings and motors
- Check for leaks

Unit Heaters

- Check and clean as needed
- Check heat operation
- Lubricate applicable bearings and motors
- Check for leaks

Fan Powered Variable Air Volume Boxes

- Check bearings
- Check belts
- Check condition

Exhaust Fans

- Check bearings
- Check belts, replace annually
- Check condition, clean as needed

Makeup Air Units

- Lubricate necessary bearings and motors
- Check evaporator coils
- Check operation
- Check thermostats/controls system
- Change air filters
- Check and clean condensate pan and pipe (install drain tablets)
- Check and adjust operating controls
- Check and adjust safety controls

Loop Pumps

- Check operation
- Lubricate motors and bearings

Electric Baseboard Heat

- Check operation

Water Source Heat Pumps

- Check condition of evaporator coils
- Check operation
- Check safety controls
- Check operating controls
- Check and clean condensate pan and pipe (install drain tablets)
- Replace air filters

Packaged Units

- Replace air filters
- Check electrical connections
- Clean condenser coils
- Check operating controls
- Check safety controls
- Check evaporator coils
- Check thermostats
- Check and clean condensate pan and pipe (install drain tablets)
- Check operation
- Lubricate bearings and motors

Water Filter (Health Building)

- Remove and replace water filter cartridge

Backflow Preventers

- Certify backflow preventer once per year (Required by law)

REPORT ANY DEFICIENCIES TO CLIENT AFTER SERVICE

7. Provide above services at the cost of (please choose payment option):

Facility	Frequency	Who Provides Filters and Belts	Annual Price
Curry Building	Semi-Annual	HFI	\$1,828.00
Fiscus Building	Semi-Annual	HFI	\$694.00
Johnson Building	Semi-Annual	HFI	\$1,225.00
Justice Building	Semi-Annual	HFI	\$15,698.00
Showers Building	Quarterly	HFI	\$13,260.00
Health Clinic	Quarterly	HFI	\$1,988.00
Youth Center	Quarterly	HFI	\$1,888.00
Highway Garage	Quarterly	HFI	\$2,346.00
Morton St Garage	Semi-Annual	HFI	\$885.00
Total			\$39,812.00

8. If repairs outside of scheduled maintenance and inspections listed are to be made, labor shall be invoiced at our current discounted rate of **\$80.00** per hour for 7:00 a.m. to 3:30 p.m., Monday thru Friday. Emergency call outs during other hours shall be invoiced at our current discounted rate of **\$101.00** per hour. All labor is billed to the nearest half hour. All emergency call outs shall be invoices on a portal to portal basis.
9. Air filters and belts are provided, in accordance with the aforementioned table.

B. Excluded from this Agreement:

1. Parts, material, and refrigerant needed for repairs.
2. Altering of equipment from manufacturer's recommendations.
3. Acts of God i.e., lightening, flood, wind, etc.

C. Customer Shall:

1. Provide access to the building and to the equipment to be serviced, and remove any fixtures, merchandise, walls, etc. necessary for the performance of work under this Agreement.
2. Operate covered equipment according to manufacturer's recommendations.
3. Make all payments in full when due.

D. Terms of Agreement:

1. Initial terms of this Agreement shall continue in force for a period of three (3) years with either party able to cancel with a thirty (30) day written notice. In order to not interrupt service, this Agreement will automatically renew on a year-to-year basis after the original term ends unless customer or HFI gives the other written notice not to renew at least thirty (30) days prior to the end of the Agreement term.
2. HFI will provide customer with notice of any adjustments in the Agreement price and hourly service rates applicable to a renewal period no later than thirty (30) days prior to the commencement of that renewal period. Unless the customer terminates the Agreement, the adjusted price shall be the price for the renewal period. If HFI fails to timely provide such notice, the Agreement shall continue at the existing price, adjusted by previous year's increase in prevailing service consumer price index.
3. HFI may terminate this Agreement at any time if Customer fails to make payments in full when due. Terms are NET thirty (30) days from invoice date. Separate invoices shall be prepared for scheduled maintenance and inspections and repair work.

HARRELL-FISH INC.


Aaron Wagoner, Account Manager

DATE 11/22/19

ACCEPTED BY:

(Authorized Signature)

DATE _____

Exhibit "A"

Facility	Location	Qty.	Description
Curry Building	Roof	11	Condensing Units
	Attic	5	Furnaces and Evaporator Coils
	1 st Floor	2	Furnaces and Evaporator Coils
	Atrium Room	1	Furnace and Evaporator Coil
	Records Room	1	Furnaces and Evaporator Coil
	Server Room	1	Liebert Unit
Fiscus Building	Attic	3	Furnaces and Evaporator Coils
	Roof	4	Condensing Units
	Server Room	1	Liebert Unit
Johnson Building	Behind Copy Room	1	Furnace and Evaporator Coil
	Janitorial Closet	1	Furnace and Evaporator Coil
	2 nd Floor East	2	Furnaces and Evaporator Coils
	Basement	1	Furnace and Evaporator Coil
	Roof	5	Condensing Units
Justice Building	3 rd Floor	2	Liebert Unit
	5 th Floor	1	Liebert Unit
	301 Courtroom	1	Furnace
	301 Courtroom	1	Evaporator Coil
	Mezzanine	1	Condensing Unit
	3 rd Floor	2	AHU A&B
	1 st Floor	2	Boilers
	1 st Floor	2	Chillers
	5 th Floor	3	Water Heaters
	1 st Floor	4	Chilled Water Pumps
	1 st Floor	2	Heating Water Pumps
	1 st Floor	2	Return Air Handlers
	1 st Floor	2	Supply Air Handlers
	1 st Floor	2	Evapco Cooling Towers
	5 th Floor	2	Return Air Handlers
	5 th Floor	2	Supply Air Handlers
	5 th Floor	1	Hot Water Circulation Pump
	5 th Floor	7	Mixing Valve
	1 st Floor	27	Variable Air Volume Boxes
	2 nd Floor	44	Variable Air Volume Boxes
	3 rd Floor	35	Variable Air Volume Boxes
	4 th Floor	13	Variable Air Volume Boxes
	5 th Floor	2	Variable Air Volume Boxes
	1 st Floor	21	Fin Tube Radiators
	2 nd Floor	36	Fin Tube Radiators
	3 rd Floor	28	Fin Tube Radiators
	4 th Floor	2	Fin Tube Radiators
	5 th Floor	2	Fin Tube Radiators

	1 st Floor	6	Fan Coil Units
	2 nd Floor	7	Fan Coil Units
	1 st Floor	4	Unit Heaters
	5 th Floor	1	Unit Heater
	1 st Floor	7	Fan Power Volume Boxes
	2 nd Floor	1	Fan Power Volume
	3 rd Floor	7	Fan Power Volume Boxes
	4 th Floor	3	Fan Power Volume Boxes
	5 th Floor	22	Fan Power Volume Boxes
	1 st Floor	2	Exhaust Fans
	3 rd Floor	3	Exhaust Fans
	Roof	15	Exhaust Fans
Showers Building	Mechanical Room	1	Makeup Air Unit
	Mechanical Room	2	Loop Pumps
	Mechanical Room	2	Backflow Preventers
	2 nd Floor	1	Liebert System
	Entry Way	5	Electric Heat Strips Below Windows
	Stairwells	5	Electric Wall Heaters
	North Side of Bldg.	1	Evapco Cooling Tower
	1 st and 2 nd Floors	54	Water Source Heat Pumps
Health Clinic	Basement	1	Floor Mount Liebert Unit
	Roof	5	Condensing Units
	South Side of Bldg.	2	Condensing Units
	Roof	1	Packaged Unit
	Attic	1	Air Handling Unit (Cooling Only)
	Basement	6	Furnaces and Evaporator Coils
	Basement	1	Water Filter
Youth Center	Building 1	4	Trane Furnaces
	Building 1	4	Trane Condensing Units
	Building 2	3	American Standard Furnaces
	Building 2	3	American Standard Condensing Units
Highway Garage	2 nd Floor	2	Carrier 8-ton Air Handlers
	Back of Building	2	Carrier 8-ton Condensing Units
	Garage	3	Unit Heaters
	2 nd Floor	1	Liebert System
Morton Street Garage	Garage	3	Air Handlers
		3	Heat Pumps

MONROE COUNTY BOARD OF COMMISSIONERS

Date to be heard: November 27, 2019

Item for Formal Meeting? ☒
(Ex: Routine items, continuing grants)

OR

Item for Work Session / Discussion ☐
(Ex: Public interest items, Ordinance changes, new grants and grants that add personnel)

Title of item to appear on the agenda:
Include VENDOR's Name in title if appropriate

Ratification - Michael Chamblee, Architect

All Grants must complete the following

Is this a grant request? Yes ☐

New Grant to the County? Yes ☐

Grant Type:

Reimbursement/Drawdown ☐

Up Front Payment ☐

County IS Pass Through ☐

Federal Agency:

Federal Program:

CFDA #

Federal Award Number and Year:

Or other identifying number

Pass Through Entity

Amount Received

Federal:

State:

Local Match:

Total Received:

Contracts/Agreements/MOU- Interlocal/Ordinance/Resolution/Grant item:

Fund Name: GO Bond 4810

Fund Number: 4810-42250-0000

Amount: \$33,500.00-\$40,000.00

If there is a monetary number in the Amount Box, you HAVE to include the Fund Name & Number. IF this is a grant waiting on the creation of a Fund Name & Number, indicate that in the boxes.

Executive Summary:

The attached Proposal is for Architectural Design Services for the first floor of the Monroe County Health Building

Person Presenting: Angie Purdie, Commissioners' Admin

Department: Commissioner's Office

County Legal Review required prior to submission of this form for all contracts
Attorney who reviewed: Jeff Cockerill

Submitted by: Jill Newman, Financial Manager

Date: November 20, 2019

Each agenda request and all necessary documents to the Auditor's Office (Anita Freeman) at: afreeman@co.monroe.in.us AND to the Commissioner's

Office c-mail: Commissionersoffice@co.monroe.in.us

Page 25 of 74

Form Approved 1/1/19

PROPOSAL

Angela Purdie
Commissioners' Administrator
100 W. Kirkwood Ave. Rm 323
Bloomington, Indiana 47404

October 10, 2019

Project: Monroe County Historic Health Building

Client: Monroe County

Proposal of Architectural Design Services: Plans will be based on Scheme 4.5 remodel of first floor.

1. Meetings to review design development and construction drawings.
2. Building code review with MCBF and a code consultant.
3. Construction drawings.
4. Outline Specifications of materials, equipment, fixtures, finishes, and colors.
5. Plans will include: Floor plan, finish schedule, door schedule, wall sections and details, electrical and lighting plan, plumbing plan and riser diagram; heating, cooling and ventilation plan; interior elevations and details of built-in cabinetry; interior elevations of restrooms for accessibility requirements.
8. Submittal of plans to the State Plan Review, including the Energy Code program submittal.
9. Coordinate bidding process.
10. Bi-weekly visits for observation of construction progress and meetings to discuss construction progress.
11. Review of pay requests.
12. Coordinate with Monroe County's selections of furniture and prefabricated work stations.

The Client acknowledges that:

1. In the case of unresolved conflicts between the Client and the Architect, they will first seek nonbinding mediation.
2. The Client agrees to the fullest extent permitted by law, to limit the liability of the Architect and his sub-consultants on the project for any and all claims, losses, costs, damages of any nature whatsoever or claims expenses from any cause or causes, so that the total aggregate liability of the Architect and his sub-consultants to all those named shall not exceed \$50,000. Such claims and causes include, but are not limited to, negligence, professional errors or omissions, strict liability, breach of contract or warranty.
3. The Architect and his sub-consultants shall perform their services as expeditiously as is consistent with the professional skill and care ordinarily provided by architects and consultants practicing in the same or similar locality under the same or similar circumstances.

MICHAEL CHAMBLEE – ARCHITECT
1833 COUNTRY CLUB RD. NASHVILLE, INDIANA 47448 O: 812.988.1432 C: 812-345-2942

PROPOSAL

Billing:

1. Hourly rates: Architect: \$135/hr.; CAD Professional: \$85/hr.; Structural Engineer: \$90/hr.; Code Consultant: \$230/hr.
2. Estimate of \$33,500 - \$40,000
3. The Architect's services will be billed at the first of each month for the work completed and the payments will be due within 30 days.

If this proposal is acceptable, please sign below.

Title

Date

Respectfully submitted,



Michael Chamblee

MICHAEL CHAMBLEE – ARCHITECT
1833 COUNTRY CLUB RD. NASHVILLE, INDIANA 47448 O: 812.988.1432 C: 812-345-2942

MONROE COUNTY BOARD OF COMMISSIONERS

Date to be heard: November 27, 2019

Item for Formal Meeting? ☒

(Ex: Routine items, continuing grants)

OR

Item for Work Session / Discussion ☐

(Ex: Public interest items, Ordinance changes, new grants and grants that add personnel)

Title of item to appear on the agenda:

Include VENDOR's Name in title if appropriate

Letter of Agreement - Monroe County Solid Waste Management Green Business

All Grants must complete the following

Is this a grant request? Yes ☐

New Grant to the County? Yes ☐

Grant Type:

Reimbursement/Drawdown ☐

Up Front Payment ☐

County IS Pass Through ☐

Federal Agency:

Federal Program:

CFDA #

Federal Award Number and Year:

Or other identifying number

Pass Through Entity

Amount Received

Federal:

State:

Local Match:

Total Received:

Contracts/Agreements/MOU- Interlocal/Ordinance/Resolution/Grant item:

Fund Name: County General

Fund Number: 1000-36012-0161

Amount: \$3,200.00 / Year

If there is a monetary number in the Amount Box, you HAVE to include the Fund Name & Number. IF this is a grant waiting on the creation of a Fund Name & Number, indicate that in the boxes.

Executive Summary:

This agreement is with the Monroe County Solid Waste Management Green Business. Recycling for the following buildings:

Showers Building - \$800.00

Youth Services Bureau - \$400.00

Justice Building - \$800.00

Health Building - \$400.00

Courthouse - \$800.00

Person Presenting: Angie Purdie, Commissioners' Admin

Department: Commissioner's Office

County Legal Review required prior to submission of this form for all contracts
Attorney who reviewed: Jeff Cockerill

Submitted by: Jill Newman, Financial Manager

Date: November 20, 2019

Each agenda request and all necessary documents to the Auditor's Office (Anita Freeman) at: afreeman@co.monroe.in.us AND to the Commissioner's

Office e-mail: Commissionersoffice@co.monroe.in.us

Page 28 of 74

INVOICE

Monroe County Solid Waste Management District
3400 S Walnut St
Bloomington IN 47401

Invoice # 202027

Date: 10/29/2019

Monroe County Commissioners
100 W Kirkwood
Room 323
Bloomington IN 47401

Due Date: 1/31/2020

Description	Quantity	Unit Price	Amount
-------------	----------	------------	--------

1 Pick up per Month		200.00	
2 Pick ups per month		400.00	0.00
1 Pick up per week		800.00	0.00
2 Pick ups per Week		1,600.00	
Special Pick Up		50.00	
Toter Containers			

Total Due 3,200.00

Showers	1 pick up per week	800.00
Youth Svr	2 pick up per mth	400.00
Justice Bldg	1 pick up per week	800.00
Health Bldg	2 pick up per week	400.00
Courthouse	1 pick up per week	800.00
		3,200.00



Where Green Living Begins

812.349.2020 gogreendistrict.com

3400 SOUTH WALNUT STREET • BLOOMINGTON, IN 47401



Letter of Agreement

Monroe County Solid Waste Management District Green Business Network Membership

From: The Monroe County Solid Waste Management District
3400 South Walnut Street
Bloomington, IN 47401
Phone: (812) 349-2019
Contact: Danny Percifield
Email: dpercifield@mcswmd.org

Must be filled out completely (PLEASE MAKE ANY NECESSARY CHANGES)

CUSTOMER NAME: MONROE COUNTY COMMISSIONER (COURTHOUSE)

Pick Up Address: 100 W KIRKWOOD
BLOOMINGTON, IN 47401

Phone: (812) 349-2527

Fax: _____

Contact: JERRY Appleberry

Email: jappleberry@co.monroe.in.us

Billing Address: 100 W KIRKWOOD ROOM 323
BLOOMINGTON, IN 47401

Phone: (812) 349-2550

Fax: _____

Contact: JILL Newman

Email: _____

PLEASE INDICATE SHIPPING/RECEIVING DAYS & HOURS: _____



Where Green Living Begins

812.349.2020 gogreendistrict.com

3400 SOUTH WALNUT STREET • BLOOMINGTON, IN 47401  

Letter of Agreement

Monroe County Solid Waste Management District Green Business Network Membership

From: The Monroe County Solid Waste Management District
3400 South Walnut Street
Bloomington, IN 47401
Phone: (812) 349-2019
Contact: Danny Percifield
Email: dpercifield@mcswmd.org

Must be filled out completely (PLEASE MAKE ANY NECESSARY CHANGES)

CUSTOMER NAME: MONROE COUNTY COMMISSIONER (HEALTH BLDG)

Pick Up Address: 119 W 7TH STREET
BLOOMINGTON, IN 47404

Phone: (812) 349-2527
Fax: _____
Contact: Jerry Appleberry
Email: _____

Billing Address: 100 W KIRKWOOD ROOM 323
BLOOMINGTON, IN 47401

Phone: (812) 349-2550
Fax: _____
Contact: Jill Newman
Email: _____

PLEASE INDICATE SHIPPING/RECEIVING DAYS & HOURS: _____



Where Green Living Begins

812.349.2020 gogreendistrict.com

3400 SOUTH WALNUT STREET • BLOOMINGTON, IN 47401



Letter of Agreement

Monroe County Solid Waste Management District Green Business Network Membership

From: The Monroe County Solid Waste Management District
3400 South Walnut Street
Bloomington, IN 47401
Phone: (812) 349-2019
Contact: Danny Percifield
Email: dpercifield@mcswmd.org

Must be filled out completely (PLEASE MAKE ANY NECESSARY CHANGES)

CUSTOMER NAME: MONROE COUNTY COMMISSIONER (JUSTICE BLDG)

Pick Up Address: 301 N COLLEGE AVE
BLOOMINGTON, IN 47401

Phone: (812) 349-2726

Fax: _____

Contact: David Gardner

Email: _____

Billing Address: 100 W KIRKWOOD ROOM 323
BLOOMINGTON, IN 47401

Phone: (812) 349-2550

Fax: _____

Contact: Jill Newman

Email: _____

PLEASE INDICATE SHIPPING/RECEIVING DAYS & HOURS: _____



Where Green Living Begins

812.349.2020 gogreendistrict.com

3400 SOUTH WALNUT STREET • BLOOMINGTON, IN 47401



Letter of Agreement

Monroe County Solid Waste Management District Green Business Network Membership

From: The Monroe County Solid Waste Management District
3400 South Walnut Street
Bloomington, IN 47401
Phone: (812) 349-2019
Contact: Danny Percifield
Email: dpercifield@mcswmd.org

Must be filled out completely (PLEASE MAKE ANY NECESSARY CHANGES)

CUSTOMER NAME: MONROE COUNTY COMMISSIONER (SHOWERS)

Pick Up Address: 501 N MORTON ST
BLOOMINGTON, IN 47404

Phone: (812) 349-2527

Fax: _____

Contact: Jerry Appleberry

Email: jappleberry@co.monroe.in.us

Billing Address: 100 W KIRKWOOD ROOM 323
BLOOMINGTON, IN 47401

Phone: (812) 349-2550

Fax: _____

Contact: Jill Newman

Email: _____

PLEASE INDICATE SHIPPING/RECEIVING DAYS & HOURS: _____



Where Green Living Begins

812.349.2020 gogreendistrict.com

3400 SOUTH WALNUT STREET • BLOOMINGTON, IN 47401



Letter of Agreement

Monroe County Solid Waste Management District Green Business Network Membership

From: The Monroe County Solid Waste Management District
3400 South Walnut Street
Bloomington, IN 47401
Phone: (812) 349-2019
Contact: Danny Percifield
Email: dpercifield@mcswmd.org

Must be filled out completely (PLEASE MAKE ANY NECESSARY CHANGES)

CUSTOMER NAME: MONROE COUNTY COMMISSIONER (YOUTH SRVC)

Pick Up Address: 615 S ADAMS ST
BLOOMINGTON, IN 47403

Phone: (812) 349-2506
Fax: _____
Contact: Vicky Thevenow
Email: _____

Billing Address: 100 W KIRKWOOD ROOM 323
BLOOMINGTON, IN 47401

Phone: (812) 349-2550
Fax: _____
Contact: Jill Newman
Email: _____

PLEASE INDICATE SHIPPING/RECEIVING DAYS & HOURS: _____

MONROE COUNTY BOARD OF COMMISSIONERS

Date to be heard: 11/27/2019

Item for Formal Meeting? ☒

(Ex: Routine items, continuing grants)

OR

Item for Work Session / Discussion ☐

(Ex: Public interest items, Ordinance changes, new grants and grants that add personnel)

Title of item to appear on the agenda:

Include VENDOR's Name in title if appropriate

Award bid to CLR, Inc. for the rehabilitation of Bridge #186 on Old Dutch Church Road

All Grants must complete the following

Is this a grant request? Yes ☐

New Grant to the County? Yes ☐

Grant Type:

Reimbursement/Drawdown ☐

Up Front Payment ☐

County IS Pass Through ☐

Federal Agency:

Federal Program:

CFDA #

Federal Award Number and Year:

Or other identifying number

Pass Through Entity

Amount Received

Federal:

State:

Local Match:

Total Received:

Contracts/Agreements/MOU- Interlocal/Ordinance/Resolution/Grant item:

Fund Name: Cumulative Bridge

Fund Number: 1135

Amount:

If there is a monetary number in the Amount Box, you HAVE to include the Fund Name & Number. IF this is a grant waiting on the creation of a Fund Name & Number, indicate that in the boxes.

Executive Summary:

Bids were advertised and opened at a public meeting on November 20, 2019 in accordance with IC 36-1-12-4 . We received two bids. The lowest, most responsive bidder was CLR, Inc. with a bid of \$329,636.45. We will be bringing a contract for your approval at an upcoming meeting. This project will be funded with Cumulative Bridge funds and Community Crossing Matching Grant funds.

Person Presenting: Lisa Ridge

Department: Highway

Attorney who reviewed: County Legal Review required prior to submission of this form for all contracts

Submitted by: Lisa Ridge

Date: November 21, 2019

Each agenda request and all necessary documents to the Auditor's Office (Anita Freeman) at: afreeman@co.monroe.in.us AND to the Commissioner's

Office e-mail: Commissionersoffice@co.monroe.in.us



CONTRACTOR'S BID FOR PUBLIC WORK - FORM 96

State Form 52414 (R2 / 2-13) / Form 96 (Revised 2013)

Prescribed by State Board of Accounts

PART I

(To be completed for all bids. Please type or print)

Date (month, day, year): November 20, 2019

1. Governmental Unit (Owner): Monroe County Board of Commissioners

2. County : Monroe County, IN

3. Bidder (Firm): CLR Inc.

Address: 2620 N. Walnut Street, Suite 1110

City/State/ZIPcode: Bloomington, Indiana 47404

4. Telephone Number: 812-336-3438

5. Agent of Bidder (if applicable): n/a

Pursuant to notices given, the undersigned offers to furnish labor and/or material necessary to complete the public works project of Rehabilitation of Bridge No. 186 on Old Dutch Church Road over Jacks Defeat Creek in Monroe County, Indiana

(Governmental Unit) in accordance with plans and specifications prepared by BLN Beam, Longest and Neff, LLC

Gilbert L. Bullock, P.E. and dated 10/11/2019 for the sum of

Three Hundred Twenty Nine Thousand, Six Hundred Thirty Six Dollars and Forty Five Cents \$ 329,636.45

The undersigned further agrees to furnish a bond or certified check with this bid for an amount specified in the notice of the letting. If alternative bids apply, the undersigned submits a proposal for each in accordance with the notice. Any addendums attached will be specifically referenced at the applicable page.

If additional units of material included in the contract are needed, the cost of units must be the same as that shown in the original contract if accepted by the governmental unit. If the bid is to be awarded on a unit basis, the itemization of the units shall be shown on a separate attachment.

The contractor and his subcontractors, if any, shall not discriminate against or intimidate any employee, or applicant for employment, to be employed in the performance of this contract, with respect to any matter directly or indirectly related to employment because of race, religion, color, sex, national origin or ancestry. Breach of this covenant may be regarded as a material breach of the contract.

CERTIFICATION OF USE OF UNITED STATES STEEL PRODUCTS

(If applicable)

I, the undersigned bidder or agent as a contractor on a public works project, understand my statutory obligation to use steel products made in the United States (I.C. 5-16-8-2). I hereby certify that I and all subcontractors employed by me for this project will use U.S. steel products on this project if awarded. I understand that violations hereunder may result in forfeiture of contractual payments.

ACCEPTANCE

The above bid is accepted this _____ day of _____, _____, subject to the following conditions: _____

Contracting Authority Members:

_____	_____
_____	_____
_____	_____

PART II

(For projects of \$150,000 or more – IC 36-1-12-4)

Governmental Unit: Monroe County Legal Department/Board of Commissioners of Monroe County

Bidder (Firm) CLR Inc.

Date (month, day, year): November 20, 2019

These statements to be submitted under oath by each bidder with and as a part of his bid.
Attach additional pages for each section as needed.

SECTION I EXPERIENCE QUESTIONNAIRE

1. What public works projects has your organization completed for the period of one (1) year prior to the date of the current bid?

Contract Amount	Class of Work	Completion Date	Name and Address of Owner
1,774,261.00	Bridge	06/2019	INDOT, Indianapolis, IN
3,165,221.00	Bridge	07/2019	INDOT, Indianapolis, IN
325,421.50	Bridge	07/2019	Gibson County, Indiana
126,850.00	Bridge	09/2019	Owen County, Indiana

2. What public works projects are now in process of construction by your organization?

Contract Amount	Class of Work	Expected Completion Date	Name and Address of Owner
482,000.00	Bridge	03/2020	Owen Co Hwy Dept, Spencer, IN
1,897,200.00	Bridge	03/2020	INDOT, Indianapolis, IN
1,949,479.00	Bridge	04/2020	INDOT, Indianapolis, IN
170,000.00	Bridge	04/2020	Greene Co Hwy Dept, Bloomfield, IN

3. Have you ever failed to complete any work awarded to you? No If so, where and why?

4. List references from private firms for which you have performed work.

Conexco Inc./ Greg Lloyd

Crider & Crider, Jeff Crider

Cardno JF New, Sean Clauson

SECTION II PLAN AND EQUIPMENT QUESTIONNAIRE

1. Explain your plan or layout for performing proposed work. *(Examples could include a narrative of when you could begin work, complete the project, number of workers, etc. and any other information which you believe would enable the governmental unit to consider your bid.)*

Will move in and employ four to five men. Will mobilize equipment and build new grade.

Once grade is placed, old bridge will be removed and new bridge will be built. Approaches will then be paved after all

other work has been completed. Guardrail will be installed and road will be open

to traffic.

2. Please list the names and addresses of all subcontractors *(i.e. persons or firms outside your own firm who have performed part of the work)* that you have used on public works projects during the past five (5) years along with a brief description of the work done by each subcontractor.

Dave O'Mara Contractors-North Vernon, Indiana-Asphalt work

C-Tech Corporation-Boggstown, Indiana-Guardrail work

NES Traffic Safety-Lafayette, Indiana-Temporary Traffic Signs

Conexco Inc-Staunton, Indiana-Dirt Work

3. If you intend to sublet any portion of the work, state the name and address of each subcontractor, equipment to be used by the subcontractor, and whether you will require a bond. However, if you are unable to currently provide a listing, please understand a listing must be provided prior to contract approval. Until the completion of the proposed project, you are under a continuing obligation to immediately notify the governmental unit in the event that you subsequently determine that you will use a subcontractor on the proposed project.

None at this time

4. What equipment do you have available to use for the proposed project? Any equipment to be used by subcontractors may also be required to be listed by the governmental unit.

Rubber Tired Backhoe Model Case 580SL, Caterpillar Track Mounted

Excavator Model 325BL, Smith Model Air Compressor 175 cfm, Various Supplies,

Pickup Trucks, Dump Trucks, Cat D5 Dozer, Compactor Roller, Crawler Crane and Pile Hammer

5. Have you entered into contracts or received offers for all materials which substantiate the prices used in preparing your proposal? If not, please explain the rationale used which would corroborate the prices listed.

Yes

SECTION III CONTRACTOR'S FINANCIAL STATEMENT

Attachment of bidder's financial statement is mandatory. Any bid submitted without said financial statement as required by statute shall thereby be rendered invalid. The financial statement provided hereunder to the governing body awarding the contract must be specific enough in detail so that said governing body can make a proper determination of the bidder's capability for completing the project if awarded.

SECTION IV CONTRACTOR'S NON - COLLUSION AFFIDAVIT

The undersigned bidder or agent, being duly sworn on oath, says that he has not, nor has any other member, representative, or agent of the firm, company, corporation or partnership represented by him, entered into any combination, collusion or agreement with any person relative to the price to be bid by anyone at such letting nor to prevent any person from bidding nor to include anyone to refrain from bidding, and that this bid is made without reference to any other bid and without any agreement, understanding or combination with any other person in reference to such bidding.

He further says that no person or persons, firms, or corporation has, have or will receive directly or indirectly, any rebate, fee, gift, commission or thing of value on account of such sale.

SECTION V OATH AND AFFIRMATION

I HEREBY AFFIRM UNDER THE PENALTIES FOR PERJURY THAT THE FACTS AND INFORMATION CONTAINED IN THE FOREGOING BID FOR PUBLIC WORKS ARE TRUE AND CORRECT.

Dated at Bloomington this 20th day of November, 2019

CLR Inc.

(Name of Organization)

By

President

(Title of Person Signing)

ACKNOWLEDGEMENT

STATE OF Indiana)
COUNTY OF Monroe) ss

Before me, a Notary Public, personally appeared the above-named Chad Reitmeyer and
swore that the statements contained in the foregoing document are true and correct.

Subscribed and sworn to before me this 20th day of November, 2019.

Alice K Turner
Notary Public

My Commission Expires: April 23, 2027

County of Residence: Lawrence County, IN



BID OF

CLR Inc.

(Contractor)

2620 N. Walnut St., Ste 1110

(Address)

Bloomington, Indiana 47404

FOR

PUBLIC WORKS PROJECTS

OF

Rehabilitation of Bridge No. 186

on Old Dutch Church Road over Jacks Defeat Creek

In Monroe County, Indiana

Filed _____

Action taken _____

MONROE COUNTY BOARD OF COMMISSIONERS

Date to be heard: 11/27/2019

Item for Formal Meeting? ☒
(Ex: Routine items, continuing grants)

OR

Item for Work Session / Discussion ☐
(Ex: Public interest items, Ordinance changes, new grants and grants that add personnel)

Title of item to appear on the agenda:
Include VENDOR's Name in title if appropriate

Supplemental agreement between Monroe County Board of Commissioners and DLZ Indiana, LLC

All Grants must complete the following

Is this a grant request? Yes ☐

New Grant to the County? Yes ☐

Grant Type:

Reimbursement/Drawdown ☐

Up Front Payment ☐

County IS Pass Through ☐

Federal Agency:

Federal Program:

CFDA #

Federal Award Number and Year:

Or other identifying number

Pass Through Entity

Amount Received

Federal:

State:

Local Match:

Total Received:

Contracts/Agreements/MOU- Interlocal/Ordinance/Resolution/Grant item:

Fund Name: Westside Economic Development

Fund Number: 4920

Amount: \$200,325.00

If there is a monetary number in the Amount Box, you HAVE to include the Fund Name & Number. IF this is a grant waiting on the creation of a Fund Name & Number, indicate that in the boxes.

Executive Summary:

This supplemental agreement is for the Vernal Pike connector road via Sunrise Greetings to Gates Drive. There has been significant design changes to help accomodate the businesses located on Sunrise Greetings Court. This agreement was presented to the Redevelopment Commission on November 20, 2019 and was unanimously approved.

Person Presenting: Lisa Ridge

Department: Highway

County Legal Review required prior to submission of this form for all contracts
Attorney who reviewed: Jeff Cockerell

Submitted by: Lisa Ridge

Date: November 21, 2019

Each agenda request and all necessary documents to the Auditor's Office (Anita Freeman) at: afreeman@co.monroe.in.us AND to the Commissioner's Office e-mail: Commissionersoffice@co.monroe.in.us

SUPPLEMENTAL AGREEMENT NO. 1 FOR ENGINEERING SERVICES

This Supplemental Agreement is made and entered into effective as of this ____ day of ____, 2019 by and between Monroe County Board of Commissioners, acting by and through its proper officials (CLIENT), and DLZ Indiana, LLC ("the CONSULTANT"), a limited liability company organized under the laws of the State of Indiana.

Des. Nos.: 1702957, 1900406, & 1902093

Project Description: Vernal Pike Connector Project that includes a new bridge on new alignment over CSX Railroad (operated by Indiana Railroad), connecting West Vernal Pike to Profile Parkway in Monroe County.

WITNESSETH

WHEREAS, the LPA entered into an Engineering Agreement on August 22, 2018 with the CONSULTANT for Engineering Services and Documents in relation to the above described project and

WHEREAS, the LPA desires the CONSULTANT to provide additional services for the purpose of:

1. Amend the proposed typical section of the roadway.
2. Railroad Coordination. CONSULTANT will replace INDOT as the railroad coordinator and will provide railroad coordination in accordance with the Suggested Guidelines for LPA Projects with Railroad Coordination Activities, provided by INDOT.
3. Property Owner Coordination. CONSULTANT will coordinate with adjacent property owners to minimize project impacts due to a previously unknown development project within the project limits.
4. Bridge Design. CONSULTANT will provide design services for a second bridge to provide access to a bifurcated property for the property owner under the proposed road. Consultant will provide additional construction phase services related to the design of the second bridge, including shop drawing reviews for beams, stay in place forms and coping forms. Review of design calculations and shop drawings for the three-sided precast concrete structure and responding to RFI's.
5. Retaining Wall Design. CONSULTANT will provide design services for additional retaining walls required to minimize project impacts to adjacent properties due to a previously unknown development project within the project limits. Consultant will provide additional construction phase services related to the design of the MSE additional retaining wall. Services include review of design calculations and shop drawings for the additional MSE walls and pedestrian railing and responding to RFI's.

WHEREAS, in order to finalize assigned work and provide for the completion of the work, it is necessary to amend and supplement the Engineering Agreement.

NOW, THEREFORE, it is agreed by and between the parties as follows:

1. Revise ITEM 1 and 2. of the 3rd paragraph of the SCOPE OF SERVICES in Exhibit A as follows:

1. Vernal Pike Connector reconstruction from West Vernal Pike to Profile Parkway (DES No. 1702957), including new bridge construction (Des No. 1900406) on new alignment over CSX Railroad (operated by Indiana Railroad).

2. The typical section of roadway will consist of two 12-foot lanes with standard concrete curb and gutter, a 3-foot bike lane in each lane, a Multiuse path, varying in width (10' to 12'), on the east side of the roadway, with a concrete barrier between the roadway and the Multiuse path, and a 5-foot sidewalk and a 10' Multiuse path on either side. A 3-foot bike lane may also be added along Sunrise Greetings Court, if right of way permits.

2. Add the item 21 to SECTION E. "ENVIRONMENTAL SERVICES" of Exhibit A as follows:

21. The CONSULTANT shall perform the following services to update the in-progress Level 4 Categorical Exclusion Environmental Study (CE) based on the expanded project limits, as requested by INDOT. INDOT Environmental services has concluded that the Vernal Pike Connector project NEPA document must be expanded to include a portion of the locally funded and planned Profile Parkway Extension Project to connect the Vernal Pike Connector project to Gates Drive. The supplemental environmental compliance services shall consist of the following work elements:
 - a. Perform field reconnaissance of expanded project area to verify that the INDOT Level 4 CE impact criteria and thresholds would not be exceeded by the project, and to collect information on social, economic and environmental resources within the project area.
 - b. Revise/update preliminary resource information about the project and project area including supporting maps and photographs (aerial and ground).
 - c. Update/Revise the Red Flag Investigation for the expanded project area using the current INDOT template.
 - d. Perform supplemental Early Coordination with state and federal natural resource and regulatory agencies regarding the expanded project area.
 - e. Perform on-line Rangewide Programmatic Consultation using USFWS IPaC website for expanded project area.
 - f. Prepare Section 106 consultation documentation regarding the expanded project limits for determinations of the expanded APE and the identification of properties listed in or eligible for listing in the NRHP (update of the archaeological records check and field reconnaissance report, and revision of the Historic Properties Report), and a recommended finding of No Historic Properties Affected or No Adverse Effect.
 - g. Assess comments received from SHPO and other consulting parties pertaining to the Section 106 consultation documentation for the expanded project limits, assess potential effects.
 - h. Prepare Final No Historic Properties Affected or No Adverse Effect and Findings documentation for the expanded project limits to be submitted to INDOT for approval on behalf of FHWA-IN. Subconsultant services are required.
 - i. Update the traffic noise model and collect additional ambient noise measurements for the expanded project limits.
 - j. Update the waters report for expanded project area.
 - k. Update karst report for expanded project area.

3. Revise SECTION J. "RAILROAD COORDINATION" of Exhibit A as follows:

~~DLZ INDOT~~ will provide Railroad Coordination in accordance with the Suggested Guidelines for LPA Projects with Railroad Coordination Activities, provided by INDOT. DLZ will provide work in unison with INDOT regarding coordination with CSX regarding the development of design criteria, plan reviews, the preliminary engineering review authorization, review of force account estimates and preparation of the final railroad agreement for the construction of the project.

1. Railroad coordination services will include:
 - a. Schedule and attend an Early Coordination Meeting with INDOT and the Client.
 - b. Prepare a letter for Client acknowledging the LPA's responsibility for PE funding.
 - c. Produce the PE Authorization Letter.
 - d. Share project plans with railroad.
 - e. Review Force Account Estimate.
 - f. Prepare "Special Provisions for Protection of Railroad Interests" and submit to railroad for review.
 - g. Develop the agreement for property access and any construction activity occurring on, under, or adjacent to the railroad right-of-way.
 - h. Prepare the formal Notice to Proceed (NTP) authorizing the railroad to begin construction activities.
 - i. Certify that railroad coordination is complete.
 - j. Schedule a pre-construction meeting between the contractor and the railroad.
 - k. Periodic inspections of railroad work during construction.
 - l. Perform thorough inspection with INDOT and a railroad representative once construction is complete.
 - m. Review all invoices and progress bills.
 - n. Prepare final project record and submit to INDOT.

4. Replace SECTION N. "GEOTECHNICAL INVESTIGATION" of Exhibit A as follows:

DLZ may engage, as a subcontractor, a geotechnical engineering firm for this task.

The purpose of our services will be to provide an evaluation of the subsurface conditions and assess the impacts of these conditions on the proposed construction. Based on our review of publicly-available geologic information and experience in the area, the subsurface conditions within the depth of interest are anticipated to consist of moderate-plasticity clay overlying rock at depths of about 20 to 30 ft. For the anticipated improvements, the scope of our services will include:

- ~~1. Performing six exploratory test borings for the roadway construction to depths of 20 ft each, and six test borings for the bridge and wingwall element to refusal on bedrock. Two additional soundings are planned at the bridge structure. Also, two pavement cores are planned in the existing Sunrise Crossing Court. The actual location, depth, and number of borings will be dependent on the soil conditions encountered and forthcoming plans. Standard Penetration Test (SPT) sampling will be performed in the borings at 2½ ft intervals. The borings will be completed using ATV-mounted equipment. The borings will be advanced using 3¼-in. I.D. hollow stem augers (AASHTO T-203) with split spoon samples obtained at 2½ ft intervals. Based on a review of readily available geologic information, the project site is located near mapped karstic features. As such, we propose sampling of the rock at the bridge and wingwall locations to a depth of up to 20 ft at up to four locations. Furthermore, the borings will be backfilled at the completion of the field work with auger cuttings and a bentonite chip plug. The test borings will be located using measurements from existing site features shown on plans to be provided. We will also contact Indiana 811 to arrange an underground utility line location check. We anticipate that arrangements to work on private property will be handled by others.~~

1. The number and depth of the planned test borings is summarized in the table below.

Element	Number of Borings	Depth of Borings (ft)
Roadway Improvements/New Roadway	7	20
Bridge Foundations	2	Auger Refusal on Rock
MSE Walls for Bridge	32	15 to Auger Refusal on Rock
Modular Block Wall	3	15
Signal Pole	1	25

Also, a total of four pavement cores are planned in the existing Sunrise Greeting Court. The actual location, depth, and number of borings will be dependent on the soil conditions encountered and forthcoming plans. Standard Penetration Test (SPT) sampling will be performed in the borings at 2½-ft intervals to a depth of 15 ft, and at 5-ft intervals thereafter. The borings will be completed using ATV-mounted equipment. The borings will be advanced using 3¼-in. I.D. hollow stem augers (AASHTO T 203). Based on a review of readily available geologic information, the project site is located near mapped karstic features. As such, we propose sampling of the rock at the bridge and MSE wall locations to a depth of up to 20 ft at locations of interest and in accordance with the INDOT geotechnical manual. Furthermore, the borings will be backfilled at the completion of the field work with auger cuttings and a bentonite chip plug. EEI will locate the test borings using measurements from existing site features shown on plans to be provided. We will also contact Indiana 811 to arrange an underground utility line location check. We anticipate that arrangements to work on private property will be handled by others;

2. Performing laboratory testing in accordance with INDOT guidelines including visual soil classification, hand penetrometer readings, moisture content, Atterberg limit determinations, grain size analyses, unconfined compression, soluble sulfate, topsoil testing, standard Proctor, and resilient modulus testing; and
3. Preparing a technical report which will include a summary of our findings and recommendations for geotechnical considerations regarding:
 - a. Subgrade preparation and improvement, as necessary, for support of sewers, embankment fill, retaining walls, and pavement.
 - b. Pavement design parameters.
 - c. Embankment fill placement.
 - d. Foundation recommendations for the bridge and retaining walls wingwalls.
 - e. Check soil parameters for standard light pole foundation and signal pole foundations.
 - f. Placement and compaction of backfill for sewers.
 - g. Potential construction problems due to the subsurface conditions encountered (e.g., soft subgrade difficulties, karstic conditions, dewatering, etc.).
4. Review of final design plans.
5. **Revise SECTION 0.4., within "ROADWAY DESIGN" of Exhibit A as follows:**
 4. *Construction Plans:* DLZ shall prepare all plans and submissions in accordance with "Part II – Plan Development" of the INDOT Design Manual, and the INDOT CLIENT Process Guidance Document

for local federal aid projects, dated August 2013, *and the LPA Design Certification for Non-National Highway System Projects (the CLIENT is INDOT Certified LPA, therefore, no other submission will be made to INDOT for review except Final Tracings)*, generally as described below:

- a. DLZ shall prepare Stage 1 Plans, for CLIENT's ~~& INDOT~~ review.
- b. DLZ shall schedule the Preliminary Field Check meeting.
- c. Following the Preliminary Field Check Meeting, DLZ shall prepare Stage 2 Plans, for CLIENT review ~~only~~.
- d. DLZ shall submit and schedule a design hearing request, *if required*.
- e. After the Design Hearing (if required) and receipt of Design Approval, DLZ shall prepare Stage 3 plans for ~~INDOT and~~ CLIENT's review. ~~At this stage, DLZ and CLIENT will determine if the project will need to be phased, should project funding not be sufficient to complete the entire project. Multiple bid lettings will constitute if required services to break the overall project into multiple sets of Stage 3 construction plans.~~

The Stage 3 Plans shall include all construction details, show all impacts including access provisions to adjacent properties, show rights of way required for construction of the project and include any maintenance of traffic provisions necessary for the roads at all ends of the project.

The statement of probable cost for construction shall be prepared in accordance with Indiana Department of Transportation Design Manual, Part II, Plan Development and shall include all items of work required for the complete construction of the work, including all temporary work necessary in connection therewith, but shall not include the cost of such items of work for which the CLIENT, through its own forces or through other party or parties will prepare detail plans. The unit prices to be used shall be in accordance with the methods used by the Indiana Department of Transportation.

- f. After approval of the Stage 3 Plans, DLZ shall prepare Final Tracings *for submittal to the CLIENT and INDOT*.

6. Add SECTIONS 0.6, 0.7 and 0.8 to "ROADWAY DESIGN" of Exhibit A, as follows:

6. *Property Owner Coordination:* Following the design initiation, DLZ and the CLIENT were notified of the planned future expansion by the adjacent property owner, Heitink Properties LLC. The property owner plans to expand its current operation along both east and west side of the proposed Project. DLZ shall coordinate with adjacent property owners, Heitink Properties LLC and Central Supply Company Inc., to minimize impacts to their commercial operations and to maintain access to their respective properties. The scope of services shall include the following:
 - a. DLZ shall attend up to five (5) meetings with adjacent property owners, their representatives, and the LPA.
 - b. DLZ shall coordinate with Heitink Properties LLC and their representatives to minimize impacts to their proposed facility expansion plans.
 - c. DLZ shall prepare conceptual exhibits to demonstrate how impacts to the adjacent properties may be minimized, for approval by the CLIENT. Conceptual design shall include options to maintain access to the truck docks for both Heitink Properties LLC and Central Supply Company Inc., as well as providing access for Heitink Properties LLC, via a second bridge under the proposed roadway, to their bifurcated parcel. Conceptual exhibits will include sufficient detail to determine cost of required improvements to maintain access and business operations for both Heitink Properties LLC and Central Supply Company Inc. These exhibits will not be construction drawings but may be used during the right-of-way appraisals for determining "cost to cure" items.

- d. DLZ shall analyze turning movements of a WB-65 design vehicle within the adjacent properties.
- e. DLZ shall develop the proposed typical roadway section that will minimize right of way impacts for approval by the CLIENT.
- f. DLZ shall pickup additional topographic survey/spot elevations at the Central Supply property, as needed for the preparation of the aforementioned conceptual exhibits.

Following the aforementioned approvals DLZ will incorporate the changes into the design plans. Any design required on the property owner's site (such as loading dock relocation, loading bay design, building/dock access relocations, parking lot design, etc.) is not part of DLZ's scope. It is assumed that such design and construction will be covered via "cost to cure" item at the time of the right of way acquisition from these properties. Refer to **Attachment A-1**.

- 7. *Traffic Signal Design:* Following the Traffic Signal Warrants evaluation by the CLIENT, the CLIENT desires to install a traffic signal at the intersection of Vernal Pike and Sunrise Greetings Court. DLZ shall design a traffic signal at the intersection of Vernal Pike and Sunrise Greeting Court. The signal design shall entail loop detections and will not be coordinated with other signals or within a signal system network.
- 8. *Modular Block Wall along Sunrise Greeting Court:* DLZ shall design a modular block wall to avoid impacting an existing building. The wall is not expected to be more than five (5) feet tall and will be approximately 180 feet in length. As a result, the area of retaining wall will be approximately 900 square feet. The wall will be located along Line 'PR-S', between station 23+50 and station 25+00.

7. Delete SECTION Q, "RIGHT TURN LANE AT VERNAL PIKE" of Exhibit A.

Q. NOT USED.

8. Revise SECTION R, "BRIDGE DESIGN" of Exhibit A as follows:

DLZ will provide the necessary engineering design information and resources to complete design plans and contract documents for a new bridge carrying the Vernal Pike Connector Roadway over CSX Railroad.

- 1. The CONSULTANT will prepare structure alternatives for the proposed crossing and develop an economic cost comparison of the alternatives. The bridge will cross three tracks at approximately 15 feet on center, *span the gas easement* and provide a minimum of 25.5 feet of lateral clearance. The proposed structure may consist of a single span structure with a length up to ~~120~~ 137 feet. It is anticipated that all alternatives will be supported by integral end bents with MSE Walls. The typical section of the bridge will match the proposed roadway section. It shall have an out to out coping width of ~~56'-6"~~ 49'-0" and shall consist of 24-foot wide pavement with 2-foot gutters and 3-foot bike lanes, ~~5-foot sidewalk on one side of the bridge~~ and a ~~14~~ 12 foot multi-use trail on ~~the other one~~ side of the bridge, bridge railings will separate the ~~sidewalk and~~ trail from the vehicular traffic ~~and will be placed at the coping on the opposite side of the trail~~, and a pedestrian rails will be mounted at the ~~copings by the trail~~. The bridge will provide 23 feet of vertical clearance over the CSX tracks. The alignment of the roadway with the railroad tracks below will result in a skew angle of approximately ~~30~~ 37.75 degrees. The structure will be designed using the 8th Edition of the "AASHTO LRFD Bridge Design Specifications".

2. DLZ will provide the necessary engineering design information and resources to complete design plans and contract documents for a new bridge carrying the Vernal Pike Connector Roadway over a private access between the bifurcated property of Heitink Properties LLC.
 3. The CONSULTANT will prepare structure alternatives for the proposed crossing and develop an economic cost comparison of the alternatives for the new structure. The bridge will provide access under the proposed Vernal Pike Connector Roadway for a bifurcated property. The typical section of the private service road shall consist of two 12-foot lanes with 4-foot shoulders. The proposed structure may consist of a single span structure with a length up to 36 feet. It is anticipated that a 3-sided precast concrete structure supported by spread foundations will be used. A minimum 14'-6" vertical clearance will be provided for the private service road under the proposed bridge. The structure will be designed using the 8th Edition of the "AASHTO LRFD Bridge Design Specifications".
9. Revise SECTION S.2. & S.3. & add S.4. within "RETAINING WALL DESIGN" of Exhibit A as follows:
2. The walls supporting the roadway approaches beyond the ends of the bridge are assumed to have a maximum height, to bottom of footing, of approximately 32.5 34 feet. The walls will be built parallel to the ~~tracks road resulting in each wall being approximately 68 feet in length.~~ South of the bridge, the walls will be approximately 285 feet long on each side of the roadway for a total length of 570 feet. On the north side of the bridge, the walls will be approximately 795 feet long on each side of the roadway, for a total length of 1,590 feet. As a result, the area of retaining wall will be approximately ~~1,200 square feet each, for a total of 4,800~~ 47,500 square feet.
 3. The retaining wall design is based on ~~8,400~~ 51,100 square feet of total wall area.
 4. Along the approach roadway within the limits of the retaining walls, traffic barrier railings will be constructed on moment slabs on both sides of the roadway. A moment slab is required between the road and pedestrian path to resist sliding and overturning of the bridge rail if it is subject to an impact load. Also, a pedestrian fence will be constructed on the retaining wall adjacent to the trail.
10. Revise SECTION A.1 "AMOUNT OF PAYMENT" of EXHIBIT B as follows:
1. DLZ shall receive as payment for the work performed under this Agreement a Total Fee Not to Exceed of ~~\$941,925.00 \$741,600.00~~ by the CLIENT, as follows:

TASKS	FEE
Project Management	\$25,000.00
Topographic Survey	\$43,900.00
Location Control Route Survey Plat (LCRSP)	\$12,500.00
Public Hearing	\$11,500.00
Road Design and Plans	\$175,000.00 \$160,000.00
Property Owner Coordination	\$25,000.00
Bridge Design and Plans	\$128,500.00
Retaining Wall Design	\$44,500.00
Abbreviated Engineers Assessment	\$6,500.00

Environmental Study for Categorical Exclusion (Level 4), Including Archeological and Historic Reports	\$45,600.00
Additional Environmental Study services	\$20,000.00
Noise Study	\$15,800.00
Waters of the US Report	\$9,300.00
Rule 5 permit, Erosion Control Report, Plans, NOI Letter	\$17,000.00
Utility Coordination	\$16,800.00
Geotechnical Investigation (At cost + 10%) and tree clearing	\$37,500.00 \$91,825.00
Railroad Coordination (through INDOT)	\$10,000.00
Pavement Design	\$6,000.00
Wetland Delineation	\$4,300.00
ACOE/IDEM permits	\$6,000.00
Signal Design at Vernal Pike/Sunrise Greetings Ct.	\$15,000.00
Modular Block Walls along Sunrise Greetings Ct.	\$14,500.00
SUBTOTAL (LUMP SUM)	\$605,400.00 \$729,525.00
AS REQUIRED SERVICES	
Wetland Delineation	\$4,300.00
ACOE/IDEM permits	\$6,000.00
Additional Meetings (assume 2 @1,500/EA) (beyond the 4 meetings stated above)	\$3,000.00
Signal Design at Vernal Pike/Sunrise Greetings Ct.	\$15,000.00
Modular Block Walls along Vernal Pike Sunrise Greeting Court	\$14,500.00
Right Turn Lane Design with MOT— NOT USED	\$25,000.00
SUBTOTAL (LUMP SUM)	\$67,800.00 \$3,000.00

RIGHT OF WAY ENGINEERING (Unit Cost per Parcel)	
T&E Reports (6 7 parcels @\$900/parcel)	\$5,400.00 \$6,300.00
Right of Way Engineering (6 7 parcels @ \$4,000/parcel)	\$24,000.00 \$28,000.00
R/W Stake Out (Two Times Only) (6 7 @ \$600.00/each time)	\$7,200.00 \$8,400.00
Appraisal Problem Analysis (6-7@\$300.00 EA)	\$1,800.00 \$2,100.00
SUBTOTAL (based on Unit Cost per parcel)	\$38,400.00 \$44,800.00

HOURLY RATE TASKS (Not to Exceed)	
<i>Additional Property Owner Coordination (including additional survey on Central Supply's property)</i>	<i>\$14,000.00</i>
<i>Additional Retaining Wall Design</i>	<i>\$32,600.00</i>
<i>Precast Concrete Structure Design</i>	<i>\$37,000.00</i>
<i>Railings, Moment Slabs and Pedestrian Fence along Approach Roadway</i>	<i>\$45,000.00</i>
<i>Additional Railroad Coordination</i>	<i>\$6,000.00</i>
<i>Bid Phase, Construction Phase Services, Utility and Railroad Coordination during Construction and Shop Drawing Review (for MSE Walls, Bridge and Lighting)</i>	<i>\$30,000.00</i>
SUBTOTAL (HOURLY RATE TASKS)	\$164,600.00
TOTAL (Not to Exceed)	\$741,600.00 \$941,925.00

For the services stated as hourly rate, DLZ shall be compensated at an hourly rate basis, in accordance with the rates presented herein. Detailed Fee Justification and Anticipated Construction Plan Set composition are presented in **Exhibits D and E**, respectively.

This contact amendment increases the current contract fee of \$741,600.00 by \$200,325.00 to \$941,925.00. Except as herein modified, changed and supplemented, all terms of the original engineering agreement dated December 19, 2016 shall continue in full force and effect.

(The remainder of this page intentionally left blank)


In Witness Whereof, the CONSULTANT and the LPA have, through duly authorized representatives, entered into this Contract. The parties having read and understand the forgoing terms of this Contract do by their respective signatures dated below hereby agree to the terms thereof.

CONSULTANT
DLZ Indiana, LLC



Gary K. Fisk, P.E.
Vice President

Attest:



Haseeb A. Ghumman, P.E., P.T.O.E.
Department Manager

LOCAL PUBLIC AGENCY
Monroe County Board of Commissioners

Julie Thomas,
President

Lee Jones
Commissioner

Penny Githens
Commissioner

Attest:

Catherine Smith
Monroe County Auditor

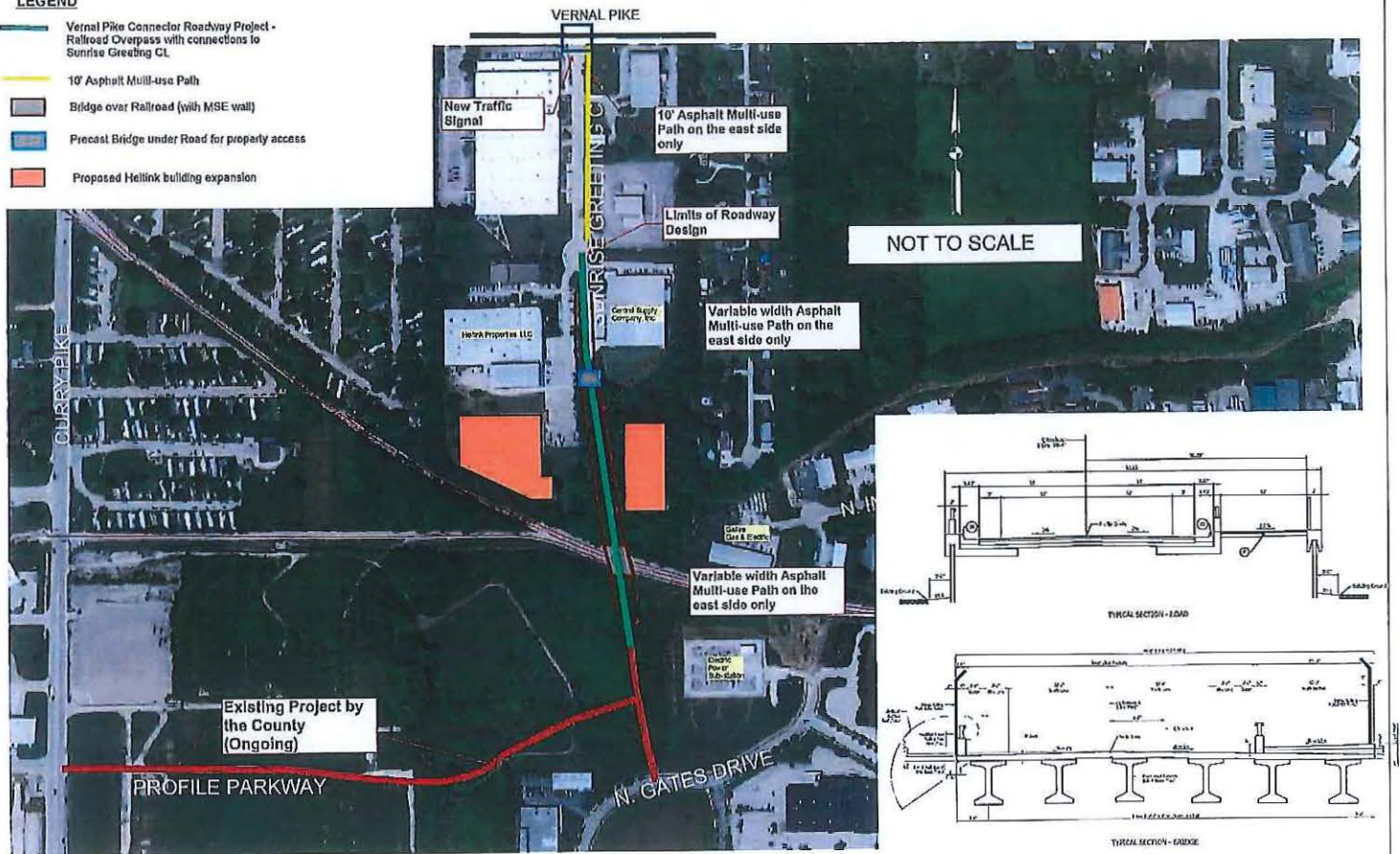
HOURLY RATE SCHEDULE

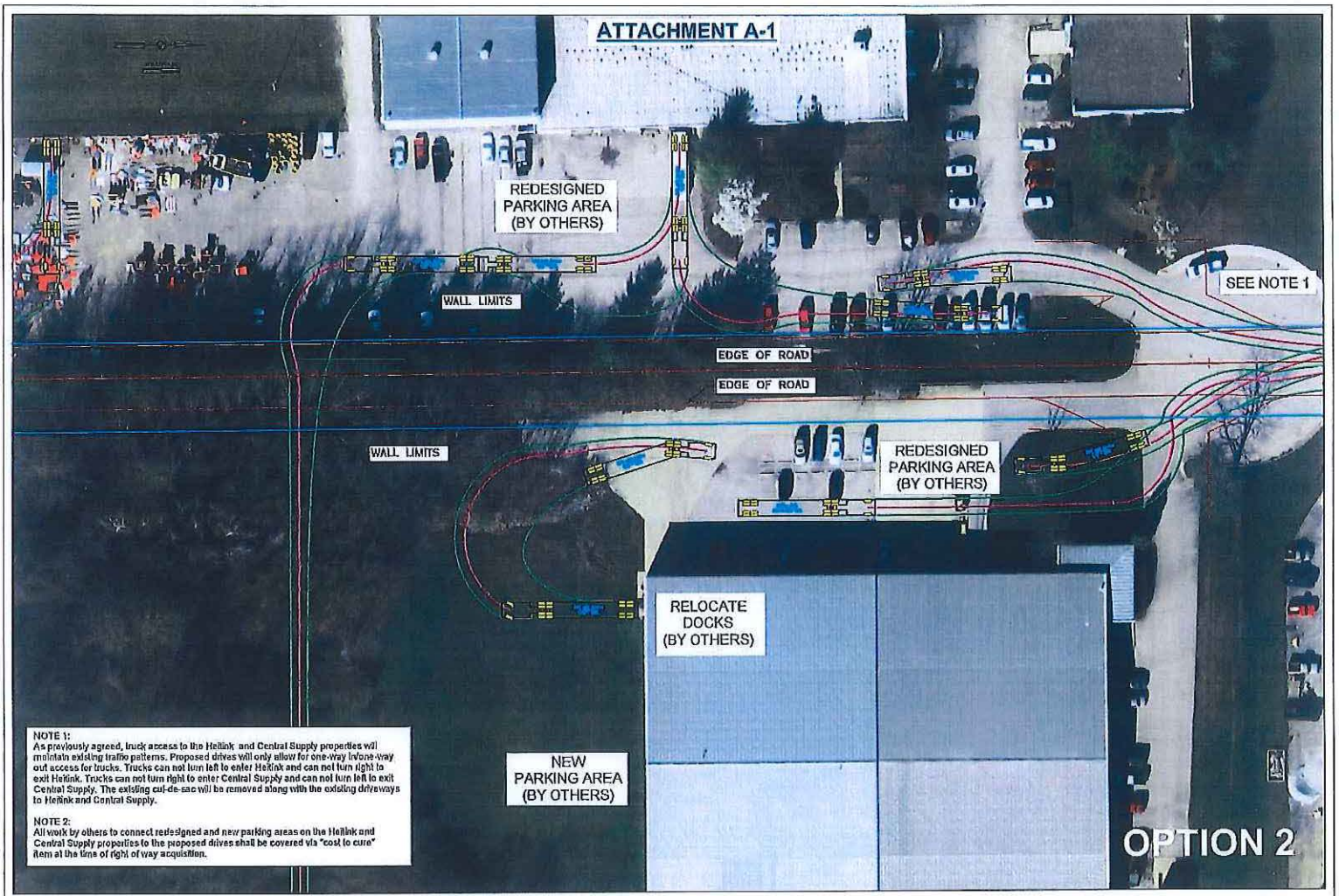
CLASSIFICATION	2019 AVERAGE HOURLY LABOR RATE	2019 AVERAGE HOURLY LABOR RATE TIMES OVERHEAD @ 157.82%	2019 AVERAGE HOURLY LABOR RATE + OH	2019 AVERAGE HOURLY LABOR RATE x PROFIT @ 15.00%	2019 AVERAGE HOURLY LABOR RATE TIMES COST OF MONEY @ 2.01%	2019 HOURLY BILLING RATE thru 6/30/2020	2020 HOURLY BILLING RATE thru 6/30/2021	2021 HOURLY BILLING RATE thru 6/30/2022	2022 HOURLY BILLING RATE thru 6/30/2023	2023 HOURLY BILLING RATE thru 6/30/2024
Principal / Officer / **	\$ 84.93	\$ 134.03	\$ 218.96	\$ 32.84	\$ 1.71	\$ 207.58	\$ 213.81	\$ 220.22	\$ 226.83	\$ 233.63
Director **	\$ 69.60	\$ 109.85	\$ 179.45	\$ 26.92	\$ 1.40	\$ 207.58	\$ 213.81	\$ 220.22	\$ 226.83	\$ 233.63
Principal Architect **	\$ 74.49	\$ 117.55	\$ 192.04	\$ 28.81	\$ 1.50	\$ 207.58	\$ 213.81	\$ 220.22	\$ 226.83	\$ 233.63
Division Manager	\$ 66.81	\$ 105.44	\$ 172.24	\$ 25.84	\$ 1.34	\$ 199.42	\$ 205.41	\$ 211.67	\$ 217.91	\$ 224.45
Department Manager	\$ 58.82	\$ 92.82	\$ 151.64	\$ 22.75	\$ 1.18	\$ 175.57	\$ 180.83	\$ 186.26	\$ 191.85	\$ 197.60
Project Manager I / II / III / Sr / Group Mgr	\$ 62.73	\$ 83.23	\$ 135.99	\$ 20.39	\$ 1.06	\$ 157.41	\$ 162.14	\$ 167.00	\$ 172.01	\$ 177.17
Resident Project Engineer	\$ 63.07	\$ 89.53	\$ 162.60	\$ 24.39	\$ 1.27	\$ 188.26	\$ 193.90	\$ 199.72	\$ 205.71	\$ 211.88
Architect VI	\$ 51.50	\$ 81.28	\$ 132.78	\$ 19.92	\$ 1.04	\$ 153.73	\$ 158.34	\$ 163.09	\$ 167.98	\$ 173.02
Architect IV	\$ 44.70	\$ 70.55	\$ 115.25	\$ 17.29	\$ 0.90	\$ 133.43	\$ 137.43	\$ 141.56	\$ 145.80	\$ 150.18
Architect III	\$ 34.88	\$ 55.05	\$ 89.93	\$ 13.40	\$ 0.70	\$ 104.12	\$ 107.24	\$ 110.46	\$ 113.77	\$ 117.19
Architectural Associate II	\$ 33.57	\$ 52.98	\$ 86.55	\$ 12.98	\$ 0.67	\$ 100.21	\$ 103.22	\$ 106.31	\$ 109.50	\$ 112.78
Architectural Associate I	\$ 28.31	\$ 41.52	\$ 67.83	\$ 10.17	\$ 0.53	\$ 78.54	\$ 80.89	\$ 83.32	\$ 85.82	\$ 88.39
Landscape Arch./Planner III	\$ 41.13	\$ 64.60	\$ 106.03	\$ 15.90	\$ 0.83	\$ 122.76	\$ 126.44	\$ 130.24	\$ 134.14	\$ 138.17
Landscape Architect IV	\$ 35.00	\$ 55.24	\$ 90.24	\$ 13.64	\$ 0.70	\$ 104.48	\$ 107.61	\$ 110.84	\$ 114.16	\$ 117.59
Landscape Architect I	\$ 25.90	\$ 40.88	\$ 66.78	\$ 10.02	\$ 0.52	\$ 77.31	\$ 79.63	\$ 82.02	\$ 84.48	\$ 87.02
Structural Engineer VI	\$ 60.01	\$ 94.70	\$ 154.70	\$ 23.21	\$ 1.21	\$ 176.12	\$ 184.49	\$ 190.02	\$ 195.73	\$ 201.60
Structural Engineer IV	\$ 51.37	\$ 81.07	\$ 132.43	\$ 19.87	\$ 1.03	\$ 153.33	\$ 157.93	\$ 162.67	\$ 167.55	\$ 172.58
Structural Engineer III	\$ 39.10	\$ 61.71	\$ 100.81	\$ 15.12	\$ 0.79	\$ 116.71	\$ 120.22	\$ 123.82	\$ 127.54	\$ 131.36
Structural Engineer II	\$ 36.71	\$ 57.94	\$ 94.65	\$ 14.20	\$ 0.74	\$ 109.59	\$ 112.88	\$ 116.26	\$ 119.75	\$ 123.34
Structural Engineer I	\$ 29.26	\$ 48.18	\$ 75.44	\$ 11.32	\$ 0.58	\$ 87.34	\$ 89.86	\$ 92.46	\$ 95.14	\$ 97.90
Civil Engineer VI	\$ 47.20	\$ 74.49	\$ 121.69	\$ 18.25	\$ 0.95	\$ 140.89	\$ 145.12	\$ 149.47	\$ 153.96	\$ 158.58
Civil Engineer V	\$ 53.25	\$ 84.04	\$ 137.29	\$ 20.59	\$ 1.07	\$ 158.95	\$ 163.72	\$ 168.63	\$ 173.69	\$ 178.90
Civil Engineer IV	\$ 48.67	\$ 78.80	\$ 125.47	\$ 18.82	\$ 0.98	\$ 145.27	\$ 149.63	\$ 154.12	\$ 158.74	\$ 163.50
Civil Engineer III	\$ 40.67	\$ 64.03	\$ 104.60	\$ 15.89	\$ 0.82	\$ 121.10	\$ 124.73	\$ 128.46	\$ 132.33	\$ 136.30
Civil Engineer II	\$ 35.05	\$ 55.31	\$ 90.35	\$ 13.55	\$ 0.70	\$ 104.62	\$ 107.75	\$ 110.99	\$ 114.32	\$ 117.75
Civil Engineer I	\$ 28.85	\$ 45.53	\$ 74.38	\$ 11.16	\$ 0.58	\$ 88.11	\$ 90.70	\$ 93.36	\$ 96.10	\$ 98.92
Geotechnical Laboratory Supervisor	\$ 34.10	\$ 53.82	\$ 87.92	\$ 13.19	\$ 0.69	\$ 101.79	\$ 104.84	\$ 107.99	\$ 111.23	\$ 114.57
Geotechnical Engineer IV	\$ 50.07	\$ 80.44	\$ 131.41	\$ 18.71	\$ 1.02	\$ 152.15	\$ 156.71	\$ 161.41	\$ 166.28	\$ 171.24
Geotechnical Engineer II	\$ 36.88	\$ 58.20	\$ 95.07	\$ 14.26	\$ 0.74	\$ 110.07	\$ 113.38	\$ 116.78	\$ 120.28	\$ 123.89
Geotechnical Engineer I	\$ 28.90	\$ 45.61	\$ 74.51	\$ 11.18	\$ 0.58	\$ 86.27	\$ 88.86	\$ 91.52	\$ 94.27	\$ 97.09
GIS Specialist	\$ 29.45	\$ 46.48	\$ 75.93	\$ 11.39	\$ 0.59	\$ 87.91	\$ 90.55	\$ 93.26	\$ 96.06	\$ 98.94
Surveyor V	\$ 44.75	\$ 70.82	\$ 115.37	\$ 17.31	\$ 0.90	\$ 133.68	\$ 137.59	\$ 141.72	\$ 145.97	\$ 150.35
Surveyor III	\$ 36.83	\$ 58.13	\$ 94.86	\$ 14.24	\$ 0.74	\$ 109.94	\$ 113.24	\$ 116.63	\$ 120.13	\$ 123.74
Surveyor	\$ 36.35	\$ 57.37	\$ 93.72	\$ 14.06	\$ 0.73	\$ 108.51	\$ 111.76	\$ 115.11	\$ 118.57	\$ 122.12
Survey Coordinator	\$ 43.25	\$ 68.28	\$ 111.51	\$ 16.73	\$ 0.87	\$ 128.10	\$ 132.88	\$ 137.96	\$ 143.07	\$ 148.31
Survey/Mapping Assistant	\$ 26.80	\$ 42.30	\$ 69.10	\$ 10.38	\$ 0.54	\$ 80.00	\$ 82.40	\$ 84.87	\$ 87.42	\$ 90.04
Party Chief / Foreman / Journeyman	\$ 38.07	\$ 61.50	\$ 100.46	\$ 15.07	\$ 0.78	\$ 116.31	\$ 119.80	\$ 123.40	\$ 127.10	\$ 130.81
Instrument Person	\$ 32.65	\$ 51.84	\$ 84.69	\$ 12.70	\$ 0.66	\$ 98.05	\$ 100.99	\$ 104.02	\$ 107.14	\$ 110.35
Rodman / Survey Apprentice I	\$ 26.39	\$ 41.64	\$ 68.03	\$ 10.20	\$ 0.53	\$ 76.76	\$ 79.13	\$ 81.56	\$ 84.07	\$ 86.65
Right of Way Specialist/Coordinator	\$ 43.13	\$ 68.07	\$ 111.20	\$ 16.88	\$ 0.87	\$ 128.74	\$ 132.61	\$ 136.58	\$ 140.88	\$ 144.90
Utility Coordinator	\$ 35.00	\$ 55.24	\$ 90.24	\$ 13.64	\$ 0.70	\$ 104.48	\$ 107.61	\$ 110.84	\$ 114.16	\$ 117.59
Environmental Geo/Scientist IV	\$ 43.80	\$ 69.13	\$ 112.93	\$ 16.84	\$ 0.88	\$ 130.74	\$ 134.67	\$ 138.71	\$ 142.87	\$ 147.15
Environmental/ Environ. Geo Scientist III	\$ 33.78	\$ 53.32	\$ 87.10	\$ 13.07	\$ 0.68	\$ 100.84	\$ 103.87	\$ 106.99	\$ 110.20	\$ 113.50
Environmental Engineer II	\$ 34.00	\$ 53.66	\$ 87.66	\$ 13.15	\$ 0.68	\$ 101.49	\$ 104.54	\$ 107.67	\$ 110.90	\$ 114.23
Environmental Scientist II	\$ 46.07	\$ 73.97	\$ 120.84	\$ 18.13	\$ 0.94	\$ 139.91	\$ 144.11	\$ 148.43	\$ 152.88	\$ 157.47
Environmental/ Environ. Geo Scientist I	\$ 24.93	\$ 39.34	\$ 64.26	\$ 8.64	\$ 0.50	\$ 74.40	\$ 76.83	\$ 79.33	\$ 81.90	\$ 84.54
Drilling Geologist I	\$ 16.70	\$ 26.38	\$ 43.08	\$ 6.45	\$ 0.34	\$ 49.85	\$ 51.35	\$ 52.89	\$ 54.47	\$ 56.11
Driller I	\$ 24.40	\$ 38.51	\$ 62.91	\$ 9.44	\$ 0.49	\$ 72.83	\$ 75.02	\$ 77.27	\$ 79.59	\$ 81.98
Driller II	\$ 31.16	\$ 49.18	\$ 80.34	\$ 12.05	\$ 0.63	\$ 93.01	\$ 95.80	\$ 98.68	\$ 101.64	\$ 104.60
Drillam Helper I	\$ 16.17	\$ 25.51	\$ 41.68	\$ 6.25	\$ 0.32	\$ 48.26	\$ 49.71	\$ 51.20	\$ 52.73	\$ 54.31
Union Driller	\$ 48.47	\$ 78.07	\$ 127.54	\$ 19.13	\$ 0.99	\$ 147.67	\$ 152.10	\$ 156.66	\$ 161.36	\$ 166.20
Field Geotechnician II	\$ 22.20	\$ 35.04	\$ 57.24	\$ 8.59	\$ 0.45	\$ 65.27	\$ 68.26	\$ 70.30	\$ 72.41	\$ 74.58
Field Geotechnician I	\$ 18.73	\$ 29.40	\$ 43.13	\$ 6.47	\$ 0.34	\$ 49.94	\$ 51.44	\$ 52.98	\$ 54.57	\$ 56.21
Mechanical Engineer III	\$ 51.18	\$ 80.77	\$ 131.94	\$ 19.79	\$ 1.03	\$ 152.76	\$ 157.35	\$ 162.07	\$ 166.93	\$ 171.84
Mechanical Engineer II	\$ 35.31	\$ 55.72	\$ 91.02	\$ 13.65	\$ 0.71	\$ 105.39	\$ 108.55	\$ 111.80	\$ 115.16	\$ 118.61
Mechanical Engineer I	\$ 29.74	\$ 46.84	\$ 76.68	\$ 11.50	\$ 0.60	\$ 88.77	\$ 91.44	\$ 94.18	\$ 97.01	\$ 99.92
Electrical Engineer VI	\$ 57.55	\$ 90.83	\$ 148.38	\$ 22.26	\$ 1.16	\$ 171.79	\$ 176.94	\$ 182.25	\$ 187.72	\$ 193.35
Electrical Engineer Specialist	\$ 50.00	\$ 78.81	\$ 128.81	\$ 19.34	\$ 1.01	\$ 149.25	\$ 153.73	\$ 158.34	\$ 163.09	\$ 167.88
Electrical Engineer III	\$ 48.35	\$ 77.88	\$ 127.23	\$ 19.09	\$ 0.99	\$ 147.31	\$ 151.73	\$ 156.28	\$ 160.97	\$ 165.80
Electrical Engineer II	\$ 35.75	\$ 56.42	\$ 92.17	\$ 13.83	\$ 0.72	\$ 106.71	\$ 109.92	\$ 113.21	\$ 116.61	\$ 120.11
Electrical Engineer I	\$ 32.00	\$ 50.50	\$ 82.50	\$ 12.38	\$ 0.64	\$ 95.52	\$ 98.39	\$ 101.34	\$ 104.38	\$ 107.51
Construction Observer Mgr / Op Lv E/F	\$ 37.63	\$ 59.39	\$ 97.03	\$ 14.55	\$ 0.76	\$ 112.34	\$ 115.71	\$ 119.18	\$ 122.76	\$ 126.44
Construction Observer / Op Lv C/D	\$ 27.88	\$ 44.00	\$ 71.88	\$ 10.78	\$ 0.56	\$ 83.23	\$ 85.73	\$ 88.30	\$ 90.95	\$ 93.68
Designer III	\$ 37.61	\$ 59.35	\$ 96.97	\$ 14.55	\$ 0.76	\$ 112.27	\$ 115.64	\$ 119.11	\$ 122.69	\$ 126.37
Designer II	\$ 31.86	\$ 50.27	\$ 82.13	\$ 12.32	\$ 0.64	\$ 95.00	\$ 97.84	\$ 100.88	\$ 103.91	\$ 107.02
Designer I	\$ 29.27	\$ 46.20	\$ 75.47	\$ 11.32	\$ 0.59	\$ 87.38	\$ 90.00	\$ 92.70	\$ 95.48	\$ 98.34
Industrial Laser Technician	\$ 36.70	\$ 57.82	\$ 94.62	\$ 14.19	\$ 0.74	\$ 109.55	\$ 112.84	\$ 116.22	\$ 119.71	\$ 123.30
Technician IV	\$ 23.35	\$ 36.85	\$ 60.20	\$ 8.03	\$ 0.47	\$ 69.70	\$ 71.79	\$ 73.95	\$ 76.16	\$ 78.45
Technician III	\$ 23.75	\$ 37.48	\$ 61.23	\$ 9.18	\$ 0.48	\$ 70.89	\$ 73.02	\$ 75.21	\$ 77.47	\$ 79.79
Technician II	\$ 23.37	\$ 36.88	\$ 60.25	\$ 8.04	\$ 0.47	\$ 69.76	\$ 71.85	\$ 74.01	\$ 76.23	\$ 78.52
Technician I	\$ 18.35	\$ 28.90	\$ 47.31	\$ 7.10	\$ 0.37	\$ 54.78	\$ 56.42	\$ 58.11	\$ 59.85	\$ 61.65
CAD Coordinator	\$ 40.90	\$ 64.55	\$ 105.45	\$ 15.82	\$ 0.82	\$ 122.09	\$ 125.75	\$ 129.52	\$ 133.41	\$ 137.41
Software Developer	\$ 44.10	\$ 69.80	\$ 113.70	\$ 17.05	\$ 0.89	\$ 131.84	\$ 135.59	\$ 139.66	\$ 143.85	\$ 148.16
Office Services Coordinator	\$ 29.74	\$ 46.94	\$ 76.68	\$ 11.50	\$ 0.60	\$ 88.77	\$ 91.44	\$ 94.18	\$ 97.01	\$ 99.92
Clerical III / Receptionist / Clerk / Adm Asst	\$ 20.93	\$ 33.03	\$ 53.95	\$ 8.09	\$ 0.42	\$ 62.47	\$ 64.34	\$ 66.28	\$ 68.26	\$ 70.31
College Interns / Apprentice	\$ 16.71	\$ 26.38	\$ 43.09	\$ 6.46	\$ 0.34	\$ 49.80	\$ 51.39	\$ 52.93	\$ 54.52	\$ 56.15
Planner V	\$ 53.85	\$ 84.99	\$ 138.84	\$ 20.83	\$ 1.08	\$ 160.74	\$ 165.57	\$ 170.53	\$ 175.65	\$ 180.92
Safety Coordinator / Sr. Safety Coord.	\$ 34.03	\$ 53.71	\$ 87.74	\$ 13.16	\$ 0.68	\$ 101.59	\$ 104.64	\$ 107.78	\$ 111.01	\$ 114.34
** \$69.54/HR @ Max rate Assumes 3% Escalation for 2020-2023 rates										

ATTACHMENT A

LEGEND

- Vernal Pike Connector Roadway Project - Railroad Overpass with connections to Sunrise Greeting Ct.
- 10' Asphalt Multi-use Path
- Bridge over Railroad (with MSE wall)
- Precast Bridge under Road for property access
- Proposed Hellink building expansion





VERNAL PIKE CONNECTOR
REVISED ROAD DESIGN FEE JUSTIFICATION

INDOT LPA PROJECT
November 18, 2019

CONSULTANT: DLZ INDIANA, LLC

DESCRIPTION: Roadway Construction

DESCRIPTION	NO. OF SHEETS	MANHOURS BY CLASSIFICATION					HOURS	TOTAL HOURS
		DEPT MNGR	PROJ MNGR	ENG V	ENG II	DSG NR II		
Stage 1								
Electronic Submission - Stage 1 (DELETE)		1	2	4	10	12	29	
Subtotal	0	1	2	4	10	12		29
Stage 2								
Electronic Submission - Stage 2 (DELETE)		1	4	4	12	10	31	
Subtotal	0	1	4	4	12	10		31
Stage 3								
Electronic Submission - Stage 3 (DELETE)		4	8	8	24	24	68	
Subtotal	0	4	8	8	24	24		68
TOTAL - HOURS:		6	14	16	46	46		128
RATE PER HOUR *		\$175.57	\$157.41	\$158.95	\$104.62	\$95.09		
FEE:		\$1,053	\$2,204	\$2,543	\$4,813	\$4,374		\$14,987
TOTAL DEDUCT (rounded)								\$15,000.00

VERNAL PIKE CONNECTOR
PROPERTY OWNER COORDINATION FEE JUSTIFICATION

INDOT LPA PROJECT

November 18, 2019

CONSULTANT: DLZ INDIANA, LLC

DESCRIPTION: Roadway Construction

DESCRIPTION	NO. OF SHEETS	MANHOURS BY CLASSIFICATION					HOURS	TOTAL HOURS
		DEPT MNGR	PROJ MNGR	ENG V	ENG II	DSG NR II		
Property Owner Coordination Meetings (5 meetings)		20	40				60	
Develop reduced typical road section		2	8		8			
Run WB-66 design truck turning templates to evaluate truck operations			8		8			
Prepare Concept Design Drawings for review by LPA and Property Owners		2	16	8	32	44	102	
Revise Concept Design Drawings and docks per Comments		1	8	8	16	36	69	
Coordination with Property Owner representatives (Designer, Contractor, Surveyor)		1	8					
Evaluate off-site drainage impacts			2		8			
Prepare Final Design Exhibits for appraisals		1	1		12	10		
Subtotal	0	27	91	16	84	90		231
TOTAL SHEETS	0	0	0	0	0	0		
TOTAL - HOURS:		27	91	16	84	90		231
RATE PER HOUR *		\$175.57	\$157.41	\$158.95	\$104.02	\$95.09		
FEE:		\$4,740	\$14,324	\$2,543	\$8,788	\$8,558		\$38,954
TOTAL FEE (rounded)								\$39,000

Vernal Pike Connector - Supplemental Fee
Monroe County, Indiana
Environmental Documentation (CE Level 4 with Standard Section 106 Review)
Fee Justification

Consultant: DLZ Indiana, LLC
November 18, 2019

November 18, 2019	Manhours by Classification						
	Division Manager	Department Manager	Project Manager	Environmental Scientist III	Civil Engineer I	Clerical II	Total Labor Hours
Description							
ADDITIONAL ENVIRONMENTAL STUDY FOR CATEGORICAL EXCLUSION (EXPANDED PROJECT AREA)							
Supplemental Data Collection and Field Reconnaissance (1 Staff, 1 trip)				12			12
Update Red Flag Investigation			2	16	4		22
Early Coordination - Assess Comments				8			8
USFWS On-line Rangewide Programmatic Consultation regarding Bats				6			6
Section 106 Consultation Letter for expanded project area, assess comments			2	12			14
Prepare Final Section 106 Findings and Section 800.11 Documentation			2	16			18
Subconsultant Management		1	2	2			5
Total Hours:	0	1	8	72	4	0	85
Salary Per Hour	\$199.42	\$176.57	\$157.41	\$100.84	\$86.11	\$62.47	
Direct Salary Cost	\$0.00	\$175.57	\$1,259.28	\$7,260.48	\$344.44	\$0.00	
Labor Fee							\$9,039.77
DLZ Specialized Technical Studies							\$3,500.00
Subconsultant Fees x 10%							\$6,939.68
Expenses							\$533.00
Total Fee (Rounded)							\$20,000.00

DLZ Specialized Technical Studies		
Update Wetland/Waters Determination, Delineation and Waters of the US Report		\$2,500.00
Update Traffic Noise Analysis and Technical Report		\$1,000.00
Total DLZ Specialized Technical Studies		\$3,500.00

Subconsultant Fees		
Qualified Professional Archaeologist - Archaeological Survey and Report		\$9,325.00
Qualified Professional Historian - HPR and Document Endorsement		\$1,850.00
Qualified Professional Karst Specialist - Research, Reconnaissance and Report		\$1,133.80
Total Subconsultant Fees		\$6,308.80

Expenses		
Miscellaneous copying, printing, application fees, advertising fees, photographs, equipment etc.:		\$250.00
Mileage to site (1 trip x 400 miles x \$0.54 per mile)		\$216.00
Meals (2 day x \$33.50)		\$67.00
Total Expenses		\$533.00

DLZ Specialized Technical Studies		
Wetland/Waters Determination, Delineation and Waters of the US Report		
Traffic Noise Analysis and Technical Report		
Total DLZ Specialized Technical Studies		

Section 106 Subconsultant Fees		
Qualified Professional Archaeologist - Archaeological Survey and Report		\$2,460.00
Qualified Professional Historian - HPR and Document Endorsement		\$5,650.00
Qualified Professional Karst Specialist - Research, Reconnaissance and Report		\$1,133.80
Total Subconsultant Fees		\$9,243.80

Expenses		
Miscellaneous copying, printing, application fees, advertising fees, photographs, equipment etc.:		\$250.00
Mileage to site (2 trip x 400 miles x \$0.54 per mile)		\$432.00
Meals (2 day x \$33.50)		\$67.00
Total Expenses		\$749.00

**VERNAL PIKE CONNECTOR ROADWAY PROJECT
BRIDGE DESIGN FEES
Retaining Wall Design (Revised) - Fee Justification**

Consultant: DLZ Indiana, LLC
November 18, 2019

November 18, 2019		Manhours by Classification								
Description	No. of Sheets	Division Manager	Department Manager	Project Manager	Structural Engineer III	Structural Engineer II	Structural Engineer I	Designer II	Clerical	Total Labor Hours
STAGE 1 PLANS										
Determine MSE Wall Geometrics	5			10	20		40	60		130
Prepare Quantities for MSE Wall				2	6		10			18
Prepare Cost Estimate for MSE Wall				1	1		1			3
Perform Quality Assurance Review		8								8
Project Management		2								2
		10	0	13	27	0	51	60	0	
Estimated hours for Stage 1 Plans =										161
STAGE 2 PLANS										
Revise Plans per Stage 1 Plan Review				1	1		2	4		8
Update Preliminary Quantities				2	6		10			18
Update Preliminary Construction Cost Estimate				1	1		1			3
Perform Quality Assurance Review		6								6
Project Management		2								2
		8	0	4	8	0	13	4	0	
Estimated hours for Stage 2 Plans =										37
STAGE 3 PLANS										
Revise Plans per Stage 2 Plan Review				1	1		2	4		8
Prepare Final 3 Line Diagrams for MSE Walls	5			6	36		74	74		190
Prepare Sections and Plan View	9			6	24		53	90		173
Finalize Quantities				6	22		38			66
Bridge Summary				1	1		2	2		6
Finalize Construction Cost Estimate				1	1		1			3
Prepare Special Provisions				2	2		1			5
Perform Quality Assurance Review		32								32
Project Management		2								2
		34	0	23	87	0	171	170	0	
Estimated hours for Stage 3 Plans =										485
FINAL TRACINGS										
Revise Plans per Stage 3 Plan Review				1	1		2	4		8
Update Construction Cost Estimate				1	1		1			3
Update Special Provisions				1	1					2
Perform Quality Assurance Review		8								8
Project Management		2								2
		10	0	3	3	0	3	4	0	
Estimated hours for Final Tracings =										23
Total Hours:		62	0	43	125	0	238	238	0	706
Salary Per Hour		\$199.42	\$175.57	\$167.41	\$116.71	\$109.59	\$87.34	\$95.09	\$62.47	
Total Fee		\$12,364.04	\$0.00	\$6,768.63	\$14,588.75	\$0.00	\$20,786.92	\$22,631.42	\$0.00	\$77,139.76
Total Fee (Rounded)										\$77,100.00

X:\Projects\GFL\2018\1893\201900\Agreement\SA#1\SA#1 Fees REV2.xlsx\Rev Ret Wall Design

VERNAL PIKE CONNECTOR ROADWAY PROJECT
BRIDGE DESIGN FEES
Precast Concrete Structure Design - Fee Justification

Consultant: DLZ Indiana, LLC
November 18, 2019

November 18, 2019		Manhours by Classification								Total Labor Hours
Description	No. of Sheets	Division Manager	Department Manager	Project Manager	Structural Engineer III	Structural Engineer II	Structural Engineer I	Designer II	Clerical	
STAGE 1 PLANS										
Review Survey Notes				1	2		4	2		9
Plot and Check Topo on Layout Sheet				1	2		4	8		15
Prepare Structure Alternates				1	4		8			13
Structure Economic Analysis				1	4		8			13
Prepare Preliminary Layout Sheet	1			2	8		12	12		34
Prepare Preliminary General Plan	2			2	6		12	12		32
Prepare Preliminary Quantities				1	4		6			11
Prepare Preliminary Construction Cost Estimate				1	1		2			4
Prepare Level One Criteria				2	2		4			8
Perform Quality Assurance Review		6								6
Assemble and Submit Plan Submittal Documents				2	4		2	2	1	11
Project Management		6								6
		12	0	14	37	0	62	36	1	Estimated hours for Stage 1 Plans = 162
STAGE 2 PLANS										
Revise Plans per Stage 1 Plan Review				1	1		2	2		6
Revise Plans per Field Check				1	1		2	2		6
Update Preliminary Quantities				1	2		4			7
Update Preliminary Construction Cost Estimate				1	1		1			3
Perform Quality Assurance Review		2								2
Assemble and Submit Plan Submittal Documents				2	4		2	2	1	11
Project Management		2								2
		4	0	6	9	0	11	6	1	Estimated hours for Stage 2 Plans = 37
STAGE 3 PLANS										
Revise Plans per Stage 2 Plan Review				1	2		4	4		11
Finalize Layout Sheet				1	2		4	4		11
Finalize General Plan				1	2		4	4		11
Prepare Headwall Details & Bill of Materials	1			1	4		6	8		19
Finalize Quantities				1	4		6			11
Bridge Summary	1			1	1		2	2		6
Finalize Construction Cost Estimate				1	1		2			4
Prepare Special Provisions				1	4					5
Perform Quality Assurance Review		6								6
Assemble and Submit Plan Submittal Documents				2	4		4	4	1	16
Project Management		4								4
		10	0	10	24	0	32	26	1	Estimated hours for Stage 3 Plans = 103
FINAL TRACINGS										
Revise Plans per Stage 3 Plan Review				1	1		2	4		8
Update Construction Cost Estimate				1	1		2			4
Update Special Provisions				1	1					2
Perform Quality Assurance Review		4								4
Project Management		4								4
		8	0	3	3	0	4	4	0	Estimated hours for Final Tracings = 22
Total Hours:		34	0	33	73	0	109	72	3	324
Salary Per Hour		\$199.42	\$175.57	\$157.41	\$116.71	\$109.59	\$87.34	\$95.09	\$82.47	
Total Fee		\$6,780.28	\$0.00	\$5,194.53	\$8,519.83	\$0.00	\$9,520.06	\$6,846.48	\$187.41	\$37,048.59
Total Fee (Rounded)										\$37,000.00

X:\Projects\GFL\2016\1063\201099\Agreements\SA#1\QSA#1 Fees REV2.xlsx\Rev Ret Wall Design

**VERNAL PIKE CONNECTOR ROADWAY PROJECT
BRIDGE DESIGN FEES**
Railings, Moment Slabs and Pedestrian Fence Along Approach Roadway - Fee Justification

Consultant: DLZ Indiana, LLC
November 18, 2019

November 18, 2019		Manhours by Classification								
Description	No. of Sheets	Division Manager	Department Manager	Project Manager	Structural Engineer III	Structural Engineer II	Structural Engineer I	Designer II	Clerical	Total Labor Hours
STAGE 1 PLANS										
Determine Railing, Moment Slab and Pedestrian Fence Geometrics				2	8		16			26
Prepare Quantities for Railing, Moment Slab and Pedestrian Fence				2	6		10			18
Prepare Cost Estimate for Railing, Moment Slab and Pedestrian Fence				1	1		1			3
Perform Quality Assurance Review		4								4
Project Management		2								2
6051502700										Estimated hours for Stage 1 Plans = 53
STAGE 2 PLANS										
Update Preliminary Quantities				1	4		6			11
Update Preliminary Construction Cost Estimate				1	1		1			3
Perform Quality Assurance Review		4								4
Project Management		2								2
60250700										Estimated hours for Stage 2 Plans = 20
STAGE 3 PLANS										
Prepare Railing Elevations	4			2	8		16	48		74
Prepare Railing Sections and Bill of Materials	1			2	6		12	12		32
Prepare Moment Slab Plans	4			2	10		20	48		80
Prepare Moment Slab Sections and Bill of Materials	1			2	6		12	12		32
Prepare Pedestrian Fence Details	1			2	6		12	16		36
Finalize Quantities				2	8		16			26
Bridge Summary				1	1		1	2		5
Finalize Construction Cost Estimate				1	1		1			3
Prepare Special Provisions				2	2		1			5
Perform Quality Assurance Review		12								12
Project Management		2								2
14016480911380										Estimated hours for Stage 3 Plans = 307
FINAL TRACINGS										
Revise Plans per Stage 3 Plan Review				1	1		2	4		8
Update Construction Cost Estimate				1	1		1			3
Update Special Provisions				1	1					2
Perform Quality Assurance Review		12								12
Project Management		2								2
140330340										Estimated hours for Final Tracings = 27
Total Hours:		40	0	26	71	0	128	142	0	407
Salary Per Hour		\$189.42	\$175.57	\$157.41	\$116.71	\$109.59	\$87.34	\$95.09	\$62.47	
Total Fee		\$7,976.80	\$0.00	\$4,092.66	\$8,286.41	\$0.00	\$11,179.52	\$13,502.78	\$0.00	\$45,038.17
Total Fee (Rounded)										\$45,000.00

X:\Project\GFL\2016\1663\201090\Agreement\SA#1\SA#1 Fees REV2.xlsx\Rev Ret Wall Design

**VERNAL PIKE CONNECTOR
REVISED RR COORDINATION**

INDOT LPA PROJECT

November 18, 2019

DESCRIPTION: Roadway Construction

Consultant: DLZ Indiana, LLC

Description	Manhours by Classification								Total Labor Hours
	Division Manager	Department Manager	Project Manager	Civil Engineer V	Civil Engineer II	Civil Engineer I	Designer II	Clerical	
Early Coordination Meeting with INDOT		4	10						14
Prepare PE funding responsibility letter			1						1
Prepare PE authorization letter			1						1
Submit Stage 1 plans for RR to determine level of participation		1	2						3
Coordination & communication with RR			8						8
Review RR comments to Stage 1 plans and prepare responses and revisions			4	8	16		8		36
Review Force Account Estimate		1	2						3
Prepare "Special Provisions for Protection of Railroad Interests" (SP Docs)		1	8						9
Review RR comments to SP Docs and revise		1	6						7
Prepare the agreement for property access and any construction activity occurring on, under, over or adjacent to the railroad right-of-way for execution by LPA and railroad		2	4						6
Prepare Notice to Proceed (NTP) authorizing railroad to begin construction activities		1	4						5
Certify that coordination is complete			1						1
Attend Pre-Construction Conference with railroad		6	8						14
Total Hours:	0	17	59	8	16	0	8	0	108
SALARY PER HOUR (2019 INDOT RATES):	\$188.42	\$175.57	\$157.41	\$155.95	\$104.62	\$86.02	\$95.09	\$62.47	
DIRECT SALARY COSTS:	\$0.00	\$2,984.69	\$9,287.19	\$1,271.60	\$1,673.92	\$0.00	\$760.72	\$0.00	\$15,978.12
TOTAL FEE (rounded)									\$16,000.00

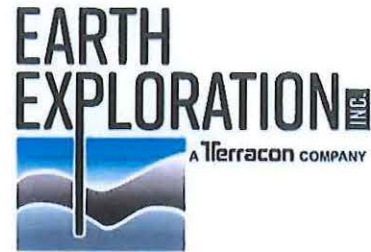
EXHIBIT E
PLANS COMPOSITION:

Plan sheets will be 24" X 36" and will generally compromise of the following:

1. Cover Sheet
2. Index Sheet
3. Plat Sheet
4. Typical sections (Approx. 2-3 sheets)
5. Maintenance of Traffic (Approx. 4-5 sheets)
6. Plan and Profile (Approx. 5-7 sheets) with a Horizontal scale of 1" = 20' & Vertical scale of 1" = 5'
7. Soil Borings (Approx. 2-3 sheets)
8. Bridge Layout Sheet
9. General Bridge Plan Sheet (Approx. 2 sheets)
10. End Bend Details (Approx. 2-3 sheets)
11. Pier Details, if needed (Approx. 2-3 sheets)
12. Bridge Foundation Details (Approx. 2 sheets)
13. Precast Three-Sided Structure Details (Approx. 2-3 sheets)
14. Framing Plan Sheet
15. Steel Detail Sheet (Approx. 3-4 sheets)
16. Floor Plan and Details (Approx. 5-6 sheets)
17. Screed (Approx. 2-3 sheets)
18. Bridge Approach Detail (Approx. 2-3 sheets)
19. Bridge Railing Details (Approx. 1 sheet)
20. Retaining Wall Details (Approx. 3-4 sheets)
21. Moment Slab Details (Approx. 2 sheets)
22. Pedestrian Fence Details (Approx. 1 sheet)
23. Bridge Summary Sheet
24. Grading and Ramp Spot Elevations (Approx. 3-4 sheets)
25. Erosion Control Plan (Approx. 4-5 sheets)
26. Singing and Pavement Marking (Approx. 4-5 sheets)
27. Traffic Signal Plan (Approx. 1 sheet)
28. Tables including Structure Data, Underdrain, Pipe Material, Approach Table, Signing, Erosion Control, Guardrail, Monuments & Right of Markers (Approx. 10-11 sheets)
29. Cross sections (Approx. 20-25 sheets)

July 23, 2019

Mr. Haseeb Ghumman, P.E.
DLZ Indiana, LLC
157 E. Maryland Street
Indianapolis, IN 46204



7770 West New York Street
Indianapolis, IN 46214
(317) 273 1690
(317) 273 2250 (FAX)

Re: Proposal for Professional Services:
Geotechnical Evaluation
Vernal Pike Connector
Monroe Co., Indiana
EEI Proposal No. PCJ185307.3

Dear Haseeb:

We appreciate the opportunity to be a part of your design team as the geotechnical consultant for the referenced project. This proposal is in response to your original request via electronic correspondence on April 30, 2018, along with updated project information provided on July 18, 2019.

PROJECT DESCRIPTION

We understand that representatives of Monroe County are planning to construct a new roadway connecting Vernal Pike to an extension of Profile Parkway with the assistance of federal funds. As part of the project, we understand that about 850 ft of the existing Sunrise Crossing Court will be milled and overlaid. The length of new construction is about 1,670 ft. Due to a railroad crossing the new roadway alignment, construction of a bridge is planned. Plans for the bridge were not available, but we anticipate that the structure will be a single-span structure supported by driven piles. We understand that the approaches for the bridge will be constructed on MSE walls. The walls are planned to range in length from about 90 to 800 ft in length with retained heights of 6 to 40 ft. In addition, a bridge structure is planned to provide access below the roadway to a property that is being divided. Street lighting with poles supported by standard drilled shaft foundation elements are planned along the alignment. Also, construction of a signal pole at the intersection of Vernal Pike and Sunrise Greeting Court and a modular block wall along the latter of those roadways is planned. Furthermore, we understand that drainage improvements consisting of new storm sewers will be required, and we have assumed depths of up to about 10 ft. Additional information regarding the project such as traffic volume and construction schedule is not known at this time.

PURPOSE AND SCOPE OF SERVICES

The purpose of our services will be to provide an evaluation of the subsurface conditions and assess the impacts of these conditions on the proposed construction. Based on our review of publicly-available geologic information and experience in the area, the subsurface conditions within the depth of interest are anticipated to consist of moderate-plasticity clay overlying rock at

depths of about 20 to 30 ft. For the anticipated improvements, the scope of our services will include:

1. The number and depth of the planned test borings is summarized in the table below.

Element	Number of Borings	Depth of Borings (ft)
Roadway Improvements/New Roadway	7	20
Bridge Foundations	2	Auger Refusal on Rock
MSE Walls for Bridge	32	15 to Auger Refusal on Rock
Modular Block Wall	3	15
Signal Pole	1	25

Also, a total of four pavement cores are planned in the existing Sunrise Crossing Court and Gates Drive. The actual location, depth, and number of borings will be dependent on the soil conditions encountered and forthcoming plans. Standard Penetration Test (SPT) sampling will be performed in the borings at 2½-ft intervals to a depth of 15 ft, and at 5-ft intervals thereafter. The borings will be completed using ATV-mounted equipment. The borings will be advanced using 3¼-in. I.D. hollow stem augers (AASHTO T 203). Based on a review of readily available geologic information, the project site is located near mapped karstic features. As such, we propose sampling of the rock at the bridge and MSE wall locations to a depth of up to 20 ft at locations of interest and in accordance with the INDOT geotechnical manual. Furthermore, the borings will be backfilled at the completion of the field work with auger cuttings and a bentonite chip plug. EEI will locate the test borings using measurements from existing site features shown on plans to be provided. We will also contact Indiana 811 to arrange an underground utility line location check. We anticipate that arrangements to work on private property will be handled by others;

2. Performing laboratory testing in accordance with INDOT guidelines including visual soil classification, hand penetrometer readings, moisture content, Atterberg limit determinations, grain size analyses, unconfined compression, soluble sulfate, topsoil testing, standard Proctor, and resilient modulus testing; and
3. Preparing a technical report which will include a summary of our findings and recommendations for geotechnical considerations regarding:
 - a. Subgrade preparation and improvement, as necessary, for support of sewers, embankment fill, retaining walls, and pavement;
 - b. Pavement design parameters;
 - c. Embankment fill placement;
 - d. Foundation recommendations for the bridge and retaining walls;
 - e. Check soil parameters for standard light pole and signal pole foundations;

Mr. Haseeb Ghumman, P.E.
DLZ Indiana, LLC
Vernal Pike Connector

July 23, 2019

- f. Placement and compaction of backfill for sewers; and
- g. Potential construction problems due to the subsurface conditions encountered (e.g., soft subgrade difficulties, karstic conditions, dewatering, etc.).

SCHEDULE

We are typically able to mobilize within three to four weeks of notice to proceed and coordination of our field activities with underground utility owners and the city. The field work will require four to five days to complete. After the field work is completed, the laboratory testing will take approximately three to four weeks (due to resilient modulus testing). We anticipate submitting a geotechnical report within two weeks after the laboratory work is completed.

COST

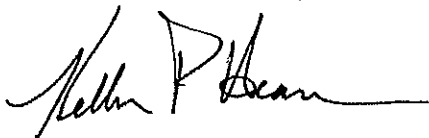
We propose to provide our services on a unit rate basis in accordance with the terms and conditions of the master services agreement and attached Cost Estimate. We estimate the total cost to be up to \$79,386.50. Please recognize that the fee is approximate because it is based on estimated quantities. The estimated fee for the field portion of the work is dependent on the borings being accessible to ATV-mounted equipment. However, the area of the proposed bridge and MSE borings is wooded. If tree clearing is necessary and EEI is to perform this service, we recommend including a contingency of \$4,500. If any significant variations develop during the course of our evaluation, we will advise you so that our efforts can be effectively directed.

CLOSURE

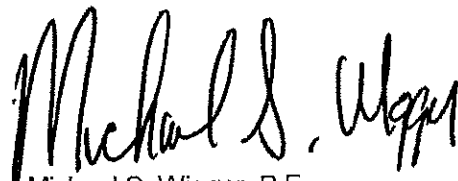
We look forward to providing our services on this project. Should you have any questions about this information, please feel free to contact us.

Sincerely,

EARTH EXPLORATION, INC.



Kellen P. Heavin, P.E.
Project Engineer



Michael S. Wigger, P.E.
Principal Engineer

Enclosure: Cost Estimate

Geotechnical Cost Estimate

Vernal Pike Connector

Monroe County, Indiana

	<u>Unit</u>	<u>Unit Price</u>	<u>Total</u>
<u>GEOTECHNICAL FIELD</u>			
1. Mobilization and Field Coordination			
a. SPT Rig	1 ea	\$270.00	\$270.00
b. CPT	ea	\$450.00	
c. Field and utility coordination	1 LS	\$400.00	\$400.00
d. Field coordination with property owners			
i. 1 - 10	1 LS	\$320.00	\$320.00
ii. 11 - 25	LS	\$510.00	
iii. Over 25	LS	\$710.00	
e. Mileage	112 mi	\$3.50	\$392.00
2. Truck mounted borings with split spoon sampling			
a. Standard	ft	\$19.00	
b. Night time	ft	\$22.42	
3. Truck mounted borings with drilling fluid			
a. Standard	ft	\$19.00	
b. Night time	ft	\$22.42	
4. Truck mounted core drilling			
a. Standard	ft	\$39.00	
b. Night time	ft	\$46.02	
5. Truck mounted borings			
a. Truck mounted borings through bedrock or boulders or concrete pavement			
i. Standard	ft	\$39.00	
ii. Night time	ft	\$46.02	
b. Bridge deck coring and restoration			
i. Standard	ea	\$350.00	
ii. Night time	ea	\$413.00	
6. Cone penetrometer testing			
a. Set up			
i. Standard	ea	\$80.00	
ii. Night time	ea	\$94.40	
b. Subsurface profiling			
i. Standard	ft	\$12.25	
ii. Night time	ft	\$14.46	
c. Profiling with pore pressure measurement			
i. Piezometric Saturation			
a. Standard	ea	\$93.00	
b. Night time	ea	\$109.74	
ii. Penetration			
a. Standard	ft	\$14.50	
b. Night time	ft	\$17.11	

	<u>Unit</u>	<u>Unit Price</u>	<u>Total</u>
iii. Pore water dissipation test			
a. Standard	hr	\$190.00	
b. Night time	hr	\$224.20	
iv. Hydraulic conductivity and consolidation			
a. Standard	ea	\$75.00	
b. Night time	ea	\$88.50	
d. Profiling with Shearwave Velocity Measurement			
i. Standard	ft	\$15.75	
ii. Night time	ft	\$18.59	
e. Sample			
i. Standard	ea	\$24.00	
ii. Night time	ea	\$28.32	
7. Hand or truck soundings			
a. Standard	ft	\$12.50	
b. Night time	ft	\$14.75	
8. Hand auger drilling			
a. Standard	ft	\$13.00	
b. Night time	ft	\$15.34	
9. Skid mounted borings with split spoon sampling			
a. Standard	1260 ft	\$30.00	\$37,800.00
b. Night time	ft	\$35.40	
10. Skid mounted borings using drilling fluid			
a. Standard	ft	\$30.00	
b. Night time	ft	\$35.40	
11. Skid mounted core drilling			
a. Standard	40 ft	\$43.00	\$1,720.00
b. Night time	ft	\$50.74	
12. Skid mounted boring through bedrock or boulders			
a. Standard	ft	\$45.00	
b. Night time	ft	\$53.10	
13. Skid mounted soundings			
a. Standard	30 ft	\$17.50	\$525.00
b. Night time	ft	\$20.65	
14. Skid Mounted Cone Penetrometer Testing (CPT)			
a. Set up			
i. Standard	ea	\$115.00	
ii. Night time	ea	\$135.70	
b. Subsurface profiling			
i. Standard	ft	\$17.75	
ii. Night time	ft	\$20.95	
c. Profiling with pore pressure measurement			
i. Piezometric Saturation			
a. Standard	ea	\$110.00	

	<u>Unit</u>	<u>Unit Price</u>	<u>Total</u>
b. Night time	ea	\$129.80	
ii. Penetration			
a. Standard	ft	\$20.50	
b. Night time	ft	\$24.19	
iii. Pore Water Dissipation Test			
a. Standard	hr	\$220.00	
b. Night time	hr	\$259.60	
iv. Hydraulic Conductivity and Consolidation			
a. Standard	ea	\$85.00	
b. Night time	ea	\$100.30	
d. Profiling with Shearwave Velocity Measurement			
i. Standard	ft	\$25.00	
ii. Night time	ft	\$29.50	
e. Sample			
i. Standard	ea	\$32.00	
ii. Night time	ea	\$37.76	
15. Furnishing of a boat	Actual Cost		
16. Barge set-up expenses			
a. Navigable water			
i. Barge set-up	ea	\$6,000.00	
ii. Rental of support equipment and/or boat	Actual Cost		
iii. Drill rig down time	hr	\$150.00	
b. Non-navigable water barge set-up	ea	\$5,000.00	
17. Additional disassembly and reassembly			
a. Navigable water	ea	\$2,100.00	
b. Non-navigable water	ea	\$1,900.00	
18. Barge mounted borings with split spoon sampling	ft	\$33.00	
19. Barge mounted core drilling	ft	\$45.00	
20. Barge mounted boring through bedrock or boulders	ft	\$45.00	
21. Barge mounted soundings	ft	\$20.00	
22. Casing through water	ft	\$8.50	
23. Uncased sounding through water	ft	\$5.50	
24. Set up for borings and machine soundings			
a. Borings and machine soundings less than 20 ft deep	3 ea	\$70.00	\$210.00
b. Rock core borings	4 ea	\$120.00	\$480.00
25. Additional 2-in. split spoon sampling	ea	\$21.00	
26. 3-in. split spoon samples	ea	\$23.00	
27. 3-in. Shelby tube samples	6 ea	\$63.00	\$378.00
28. Bag samples			
a. 25-lb sample	2 ea	\$51.00	\$102.00
b. 5-lb sample	ea	\$33.00	
29. Field vane shear test			
a. Standard	ea	\$115.00	
b. Night time	ea	\$135.70	

	<u>Unit</u>	<u>Unit Price</u>	<u>Total</u>
30. 4½-in. cased hole	ft	\$12.50	
31. Installation of Geotechnical Instruments			
a. Inclinator casing installation			
i. Standard	ft	\$15.00	
ii. Night time	ft	\$17.70	
b. Piezometer installation up to 25 ft below surface	ea	\$270.00	
c. Piezometer installation deeper than 25 ft below surface	ea	\$300.00	
d. Metal protective outer cover for inclinometer and piezometer casings	ea	\$125.00	
32. Geotechnical engineer	8 hr	\$120.00	\$960.00
33. Railroad expenses	Actual Cost		
34. Twenty-four hour water levels			
a. Field measurements per borehole			
i. Standard	22 ea	\$38.00	\$836.00
ii. Night time	ea	\$44.84	
b. PVC slotted pipe	ft	\$6.00	
35. Special borehole backfilling			
a. 0 to 30 ft			
i. SPT			
a. Standard	50 ea	\$110.00	\$5,500.00
b. Night time	ea	\$129.80	
ii. CPT			
a. Standard	ea	\$46.00	
b. Night time	ea	\$54.28	
b. More than 30 ft			
i. SPT			
a. Standard	ft	\$6.50	
b. Night time	ft	\$7.67	
ii. CPT			
a. Standard	ea	\$1.90	
b. Night time	ea	\$2.24	
c. Pavement restoration			
i. Standard	ea	\$60.00	
ii. Night time	ea	\$70.80	
36. Dozer rental	Actual Cost		
37. Traffic control			
a. Flag crew	day	\$750.00	
b. Equipment Rental	Actual Cost		\$4,000.00
c. Flag crew with equipment	day	\$850.00	
d. Traffic coordination with subcontractor	1 LS	\$600.00	\$600.00
38. Centerline surveying	Actual Cost		
	Subtotal (Geotechnical Field)		\$54,493.00
<u>GEOTECHNICAL LABORATORY</u>			
39. Sieve analysis for soils	3 ea	\$49.00	\$147.00

	<u>Unit</u>	<u>Unit Price</u>	<u>Total</u>
40. Hydrometer analysis	3 ea	\$58.00	\$174.00
41. Sieve analysis for Aggregates			
a. Analysis by Washing (AASHTO T-11)	ea	\$77.00	
b. Analysis by Using (AASHTO T-27)	ea	\$135.00	
42. Liquid limit	6 ea	\$39.00	\$234.00
43. Plastic limit & plasticity index	6 ea	\$28.00	\$168.00
44. Liquid Limit Ratio	ea	\$75.00	
45. pH test	3 ea	\$15.50	\$46.50
46. Loss on Ignition Test			
a. Loss on Ignition Test (Conventional)	6 ea	\$24.00	\$144.00
b. Loss on Ignition Test (Sequential)	ea	\$52.00	
c. Organic content based on Chlorimeter	ea	\$24.00	
47. Topsoil Tests			
a. Phosphorus tests	2 ea	\$21.00	\$42.00
b. Potassium tests	2 ea	\$21.00	\$42.00
48. Moisture Content Test			
a. Moisture Content Test (Conventional)	200 ea	\$6.75	\$1,350.00
b. Moisture Content Test (Microwave)	ea	\$8.20	
49. Expansion Index of Soils	ea	\$235.00	
50. Specific Gravity Test	6 ea	\$36.00	\$216.00
51. Unit weight determination	ea	\$17.50	
52. Hydraulic Conductivity Test			
a. Constant Head	ea	\$235.00	
b. Falling Head	ea	\$285.00	
53. Unconfined Compression Test on Soils & Rocks			
a. Unconfined Compression Test (Soils)	20 ea	\$45.00	\$900.00
b. Remolding of soil samples with chemical admixtures in chemical soil modification/stabilization (3 samples is equal to 1 unit)	ea	\$115.00	
c. Point Load Strength Index of Rock	ea	\$43.00	
54. Compressive Strength and Elastic Moduli of Intact Rock			
a. Compressive Strength of Intact Rock	10 ea	\$110.00	\$1,100.00
b. Elastic Moduli of Intact Rock	ea	\$430.00	
55. Consolidation Test	2 ea	\$450.00	\$900.00
56. Triaxial test			
a. Unconsolidated - Undrained (UU)	4 ea	\$350.00	\$1,400.00
b. Consolidated - Undrained (CU)	2 ea	\$520.00	\$1,040.00
c. Consolidated - Drained (CD)	ea	\$725.00	
d. Pore Pressure measurement with a. or b. and use of back pressure for saturation	ea	\$250.00	
57. Direct Shear Test	ea	\$530.00	
58. Moisture-Density Relationship Test			
a. Standard Proctor	2 ea	\$140.00	\$280.00

	<u>Unit</u>	<u>Unit Price</u>	<u>Total</u>
b. Modified Proctor	ea	\$155.00	
59 Soil Support Testing			
a. California Bearing Ratio Test	ea	\$525.00	
b. Subgrade Resilient Modulus on Remoulded Soils	ea	\$620.00	
c. Resilient modulus on Shelby tube	ea	\$400.00	
60 Collapse Potential Evaluation Test			
a. Silty Soil (Loess)	ea	\$380.00	
b. Cohesive or Expansive Soils	ea	\$450.00	
61 Water Soluble Sulfate Test	3 ea	\$105.00	\$315.00
62 Water Soluble Chloride Test	ea	\$105.00	
63 Soil Resistivity Test	ea	\$135.00	
64 Shale Durability Tests			
a. Slake Durability Index Test	ea	\$125.00	
b. Jar Slake Test	ea	\$13.25	

Subtotal (Geotechnical Laboratory) \$8,498.50

GEOTECHNICAL ENGINEERING

65 Geotechnical report			
a. Without soil subgrade investigation			
i. First mile	1 LS	\$1,800.00	\$1,800.00
ii. Each additional mile	mi	\$750.00	
b. With soil subgrade investigation			
i. First mile	LS	\$2,000.00	
ii. Each additional mile	mi	\$850.00	
c. Soil subgrade investigation (only)			
i. First mile	LS	\$650.00	
ii. Each additional mile	mi	\$400.00	
d. Soil profile drawing			
i. First mile	LS	\$1,265.00	
ii. Each additional mile	mi	\$600.00	
66 a. Geotechnical Data Report for Design Build Projects			
i. First mile	LS	\$900.00	
ii. Each additional mile	mi	\$400.00	
b. Technical Memo			
i. First mile	LS	\$600.00	
ii. Each additional mile	mi	\$300.00	
67 Settlement analysis and recommendations for embankment			
a. Proposed embankment	8 ea	\$510.00	\$4,080.00
b. Proposed and existing embankment	ea	\$570.00	
68 Ground modification design	ea	\$1,500.00	
69 Slope stability analysis			
a. C, ϕ or C & ϕ analysis	2 ea	\$800.00	\$1,600.00
b. Corrective measures	ea	\$800.00	
c. Stage construction corrective method	ea	\$1,400.00	

	<u>Unit</u>	<u>Unit Price</u>	<u>Total</u>
70 Bridge foundation analysis and recommendations			
a. Shallow foundation	ea	\$500.00	
b. Deep foundation			
i. Deep foundation analyses	1 ea	\$875.00	\$875.00
ii. Wave equation analyses	ea	\$335.00	
iii. Liquefaction analysis	ea	\$270.00	
iv. Group - 3D analysis	ea	\$430.00	
c. Settlement analysis for bridge pier foundation			
i. Bridge pier	ea	\$400.00	
ii. Embankment plus pier	ea	\$440.00	
iii. Embankment plus pier plus all other loads	ea	\$510.00	
d. Foundation on bedrock	ea	\$380.00	
71 Retaining structure analysis recommendations			
a. Conventional retaining structures and other types such as MSE Walls and Bin walls			
i. Shallow foundation	8 ea	\$880.00	\$7,040.00
ii. Deep foundation	ea	\$1,160.00	
iii. Settlement analysis for retaining wall foundation	ea	\$380.00	
b. Pile retaining structure analysis and recommendations			
i. Free standing structure	ea	\$1,050.00	
ii. Retaining structure with tie-back system	ea	\$1,500.00	
c. Drilled-in-pier retaining structure analysis			
i. Free standing structure	ea	\$1,050.00	
ii. Retaining structure with tie-back system	ea	\$1,500.00	
d. Soil nailing wall analysis	ea	\$1,000.00	
72 Seepage analysis	ea	\$1,450.00	
73 Deep dynamic compaction analysis	ea	\$1,450.00	

Subtotal (Geotechnical Engineering) \$15,395.00

CONSTRUCTION INSPECTION AND MONITORING

74 Pressuremeter Testing services	day	\$1,650.00	
75 Mobilization of testing equipment	LS	\$165.00	
76 a. Monitoring geotechnical instrumentation	hr	\$80.00	
b. Filed Inspector	hr	\$80.00	
77 Integrity testing	Actual Cost		
78 Field Compaction Testing			
a. Dynamic Cone Penetration Test (DCPT)	hr	\$80.00	
b. Light Weight Deflectometer Test (LWD)	hr	\$80.00	
79 Dynamic pile analysis	ea	\$1,050.00	
80 Static load test	ea	\$1,050.00	
81 Dynamic pile load test	Actual Cost		
82 CAPWAP-C analysis	ea	\$550.00	
83 Final construction inspection report	ea	\$1,000.00	

Subtotal (Construction Inspection and Monitoring)

FOUNDATION EVALUATION BY NON-DESTRUCTIVE METHODS

	<u>Unit</u>	<u>Unit Price</u>	<u>Total</u>
84 a. Surface test/Pier or foundation	Actual Cost		
b. Borehole test/Pier or foundation	Actual Cost		
<u>GEOPHYSICAL INVESTIGATION</u>			
85 Geophysical Investigations	Invoice Cost		
<u>GEOTECHNICAL PROJECT MANAGEMENT</u>			
86 Project Management			
a. Project Coordination	mi	\$1,650.00	
b. Project Website	LS	\$3,500.00	
87 Geotechnical Review			
a. Structure Report	ea	\$350.00	
b. Roadway Report	mi	\$290.00	
<u>PAVEMENT INVESTIGATION</u>			
1. Mobilization of coring equipment	LS	\$210.00	
2. Mobilization mileage for coring equipment	mi	\$1.90	
3. Pavement core (partial depth)	ea	\$130.00	
4. Pavement core (full depth)			
a. Standard	4 ea	\$200.00	\$800.00
b. Night time	ea	\$230.00	
5. Sub-base sample	ea	\$62.00	
6. Cement concrete pavement core density determination	ea	\$34.00	
7. Cement concrete core compressive strength test	ea	\$33.00	
8. Bituminous extraction test	ea	\$86.00	
9. Sieve analysis of extracted aggregate test	ea	\$58.00	
10. Recovery of asphalt from solution by Abson method	ea	\$360.00	
11. Theoretical maximum specific gravity test	ea	\$72.00	
12. Bulk specific gravity test	ea	\$32.00	
13. Air voids calculation	ea	\$29.00	
14. Core report for partial depth core	ea	\$50.00	
15. Core report for full depth core	4 ea	\$50.00	\$200.00
16. Pavement analysis and report	ea	\$800.00	
Subtotal (Pavement Investigation)			\$1,000.00

Summary of Fees

Geotechnical Field	\$54,493.00
Geotechnical Laboratory	\$8,498.50
Geotechnical Engineering	\$15,395.00
Construction Inspection and Monitoring	
Pavement Investigation	\$1,000.00
Estimated Total	\$79,386.50
Tree Clearing (as required)	\$4,500.00