



**Office of the Monroe County Surveyor**  
**Trohn Enright-Randolph**

Health Services Building  
119 West 7<sup>th</sup> Street  
Bloomington, IN 47404  
Phone: (812) 349-2570  
[surveyoroffice@co.monroe.in.us](mailto:surveyoroffice@co.monroe.in.us)

**AGENDA**  
**SURVEYOR REVIEW BOARD**  
**HYBRID MEETING**  
**Via Zoom App**  
**Tuesday, March 21, 2023**

- I. Call to Order**
- II. Approval of agenda**
- III. Approval of minutes from November 22, 2022**
- IV. New Business**
  - a. Office Update**
- V. Certification of corners:**
  - a. County Surveyor Perpetuation:**
    - i. Tabled Corners: Per\_S21\*, VanBu\_Y17, Per\_A17, VanBu\_Y19\* & Per\_A19**
    - ii. New Corners: Wash\_A05\*, Wash\_C05, Wash\_E19, Wash\_I17 & Wash\_M15**
  - b. Corner Documentation Program:**
  - c. Professional Services Agreement:**
- VI. Public input**
- VII. Adoption of next meeting date**
- VIII. Adjournment**

*\*Has no previous certification*

**Zoom Meeting Information**

<https://monroecounty-in.zoom.us/j/83035503869?pwd=OEEd0Nkh4MlpaajBvcjFqazBpcE9tQT09>

Meeting ID: 830 3550 3869

Password: 515466

**Dial by your location**+1 312 626 6799 US (Chicago)

**The meeting is open to the public. Dates are subject to change.**

For additional information, please call the Office of the Monroe County Surveyor at (812) 349-2570.

Anyone who requires an auxiliary aid or service for effective communication, or a modification of policies or procedures to participate in a program, service, or activity of Monroe County, should contact Monroe County Title VI Coordinator, (812) 349-2553, as soon as possible but no later than forty-eight (48) hours before the scheduled event.

Individuals requiring special language services should, if possible, Government Title VI Coordinator at least seventy-two (72) hours prior to the date on which the services will be needed.

**Survey Utility**



**MONROE COUNTY SURVEYOR REVIEW BOARD**  
**HYBRID MEETING Via Zoom App**  
**Tuesday, February 21, 2023**  
**MEETING MINUTES**

**MEMBERS PRESENT:** Eric Deckard, Todd Borgman, Rachel Oser (attending virtually)

**MEMBERS ABSENT:** None

**STAFF:** Trohn Enright-Randolph, Jason George, Donna Barbrick (Secretary, attending virtually), TSD

**I. Call to Order by Trohn Enright at approximately 4:06 pm**

**II. Approval of agenda. Motion by Eric Deckard; seconded by Todd Borgman VOTE by roll call: YES (unanimous). Agenda approved.**

**III. Approval of minutes from November 22, 2022. Motion by Eric Deckard; seconded by Rachel Oser. VOTE by roll call: YES (unanimous). Minutes approved.**

**IV. New Business**

**a. Office Update**

Trohn said he went to the ISPLS conference in January. He said he is making a determination concerning the next step in hiring a PS.

**V. Certification of corners:**

**a. County Surveyor Perpetuation: Per\_S21\*\*, VanBu\_M07, VanBu\_U17, VanBu\_U19\*\*, VanBu\_U21, VanBu\_U23\*, VanBu\_U25, InCr\_U01, VanBu\_Y17, Per\_A17, VanBu\_Y19\* & Per\_A19**

*\* Not previously certified*

*\*\* Previously tabled*

**Per\_S21.** Trohn said that this corner had been previously tabled and has not been previously certified. Borgman spoke about the survey he did in the area. He said we tied in through a previous survey by Eric Deckard. He said we performed a split; it fell right in line with the fence. Deckard said I know this area had some areas of uncertainty. He said I want to make sure we are all in step on this. There was a discussion of a survey for Reynolds. Oser mentioned a previous discussion about MCSO being able to send out reference surveys. **Motion to table by Deckard; seconded by Borgman. VOTE by roll call: YES (unanimous). Motion carried.**

**VanBu\_M07.** Trohn said this monument was certified in 1999 by Kevin Enright. He said we have one witness that correlates; the other witnesses are new. **Motion to approve by Borgman; seconded by Deckard. VOTE by roll call: YES (unanimous).**

**VanBu\_U17.** Trohn said this was previously certified by Eric Deckard and Michael Friley. **Motion to approve by Borgman; seconded by Rachel Oser. VOTE by roll call: YES (unanimous). Motion carried.**

**VanBu\_U19.** Trohn said this was an iron pipe found by Jason George, Survey Technician. There was a discussion about bearings. Oser asked about coordinates on monument accessories. Trohn suggested a motion to approve with adding revised bearing for Witness C, removing Geodetic Coordinates for Monument Accessory (#103000), removing Geodetic Coordinate availability language in row Monument Accessory Descriptor and adding iron pipe (Witness C from 2006 Monument Record) to Monument Accessory Table (Not the Location Sketch). **Motion to approve by Deckard; seconded by Oser. VOTE by roll call: YES (unanimous). Motion carried.**

**VanBu\_21.** Trohn said this was previously tied off, however the tie sheet has no date and no signature. He said it is believed that the survey was conducted by Raymond Graham in 1974. Trohn said MCSO does not have a copy of the Norman survey. Deckard said he has looked at this corner a couple of times. He recalled not being able to find the old ties. Jason talked about new witnesses. Trohn pulled up some reference surveys. The board looked at aerials on Elevate. **Motion by Borgman to approve with the conditions of removing Geodetic Coordinate availability language in row Monument Accessory Descriptor and removing Geodetic Coordinates for Monument Accessory (#103004) & (#103006). Seconded by Oser. VOTE by roll call: YES (unanimous). Motion carried.**

**VanBu\_U23.** Trohn said this was not previously certified and that MCSO crew found a stone. Trohn read from the tiesheet. There was a discussion of the inscription on the stone. Deckard said he felt confident this was an original stone. **Motion by Oser to approve with condition of changing the language regarding carving on the stone to "1/4" rather than "4" on the description. Second by Deckard. VOTE: Yes (unanimous).**

**VanBu\_U25 and InCr\_U01.** Trohn said this was previously tied off by Kevin Enright in 1999 and by Eric Deckard. He said the prior limestone monument was obliterated by a culvert installation along Lodge Road. Trohn said InCr\_U01 monument, a rebar, was previously tied off in 2011. Jason talked about the witnesses on Indian Creek U01. He said he was not able to get a magnetic signal from witness D. There was a discussion of a bifurcated tree witness for VanBu\_U25. Trohn said we did recover three of the previous witnesses. **Motion to approve VanBu\_U25 and InCr\_U01 by Borgman; seconded by Oser. VOTE by roll call: YES (unanimous). Motion carried.**

**VanBu\_Y17, Per\_A17, VanBu\_Y19\* & Per\_A19. TABLED due to the time.**

**b. Corner Documentation Program: (none)**

**c. Professional Services Agreement: (none)**

**VI. Public input (none)**

**VII. Adoption of next meeting date: March 21, 2023.**

**Adjourned at 5:15 pm.**

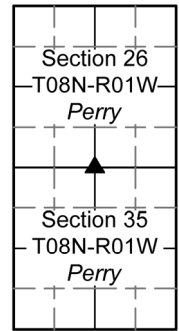
Minutes approved: \_\_\_\_\_

Added to corner record books \_\_\_\_\_

**PENDING****MONUMENT RECORD**Corner ID: **Per\_S21****Quarter Corner**

Sections 26 &amp; 35- T08N-R01W, 2nd P.M.

Perry Township, Monroe County, Indiana



**MONUMENT:** Describe monument set or found (Include material type, scribing, distance above/below grade, dimensions.)  
 5/8" Rebar with yellow plastic cap stamped "SDG INC FIRM 0101" 1' above grade

**MONUMENT LOCATION SKETCH:**

All ties to new Bearing Trees (BTs) are a mag nail set in a 1-1/2" plastic washer stamped "SURVEY MARKER - DO NOT REMOVE" and hack mark at the root crown (less than 12" above ground) perpendicular to the center of the tree, unless otherwise noted. BT diameters are noted as dbh and are measured approximately 4.5' above ground. Bearings are measured from the monument to the center of the BT, distances are measured from the monument to the mag nail.			
ID	BEARING	DISTANCE	DESCRIPTION
Witness A	N 33d W	4.5'	Mag nail and washer set in hack 0.2' above grade on the south side of a bifurcated (at grade) 11" white ash tree (south trunk only measured).
Witness B	S 10d W	5.0'	Mag nail and washer set 0.3' above grade on the north side of 4" x 4" x 4' wooden fence post.
<b>MONUMENT ACCESSORIES</b>			
Other survey grade monuments that were located in the vicinity and their relation to the monument.			
(#103006)	S 43d18'46" W	184.72'	5/8" rebar with yellow cap "SDG INC FIRM 0101" found at grade southwest of metal barn.
(#10106)	S 89d05'48" W	2611.49	<b>Per_Q21</b> included herein to depict distance and bearing in survey referenced in Theory of Location (see below) a 5/8" rebar with yellow plastic cap stamped "KB POTTER RLS S 0487" found 0.1' below grade.

**OFFICE OF THE MONROE COUNTY SURVEYOR • Trohn Enright-Randolph**

119 W 7th Street, Bloomington, IN 47404 • 812-349-2570 • surveyoroffice@co.monroe.in.us



**PENDING****MONUMENT RECORD**Corner ID: **Per\_S21****Quarter Corner**

Sections 26 & 35- T08N-R01W, 2nd P.M.  
Perry Township, Monroe County, Indiana

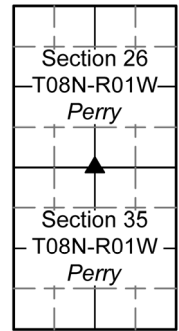
**PHOTO IDENTIFIED:** Photo Date: 7/22/2022

Photo Orientation &amp; Description: Per\_S21 from above



Photo Orientation &amp; Description: Looking east at Per\_S21 and Witnesses A &amp; B

**ORIGINAL OR SUBSEQUENT SURVEY EVIDENCE FOUND:** Include, search area or areas, search procedure, etc.

Date of Field work/Search: 7/22/2022 By: JG & HJ Monument Found: Rebar with SDG Cap BTs or Reference Objects Found: N/A  
Project #: Perry Preservation Field Book: 54/70 Equipment: The basis of bearings is Grid North System NAD83(2011)/Indiana West NAVD 88, Epoch 2010.0000, geoid12b\_conus.db3, US Survey Feet, derived from GPS observations utilizing the Indiana Real-Time Network (INCORS). Coordinate data was collected with a Javad Triumph LS Network Rover. Coordinates are available upon request. Distances to witness ties were collected with a Leica Disto laser distance meter. Bearings to witness ties were collected with the internal magnetic compass of the Javad Triumph LS and were automatically adjusted to grid north and are approximately shown hereon for reference. Priority should be given to provided distances over bearings. Notes: All witness photos on file in the Monroe County Surveyors Office.

**OTHER EVIDENCE:** Describe corner location relative to nearby features and how to reach the corner location – note fences, roads, timber cutting lines, mow lines, clearings, plantings, streams, topo changes, etc.

Monument is located east of a fence line running north-south. The east side of a fence hosts livestock and the west side is the residence 5820 Handy Road. They have an oblong turnabout in the driveway, with a playground at its center. The monument is southeast of it.

**MONUMENT PRESERVATION:** Describe work done to preserve existing monument.

"Protect Nearby Survey Marker" sign was set 0.5' east of the monument at 3.5' above grade. Geodetic controls were captured for the monument and witnesses (#103006) & (10106). Two other witnesses were established. Homeowner was made aware of existence of monument.

**THEORY OF LOCATION:** Describe the theory of location for acceptance of this monument. Include monument origin and associated uncertainty.

The rebar was set by set by Licensed Surveyor, Todd M. Borgman (LS21200021), while performing the Morrison Type E Administrative Subdivision Final Plat (2020) on file at the Recorder's Office as 2021019410.IN. Historic research has not yet been performed to prove the validity of this monument.

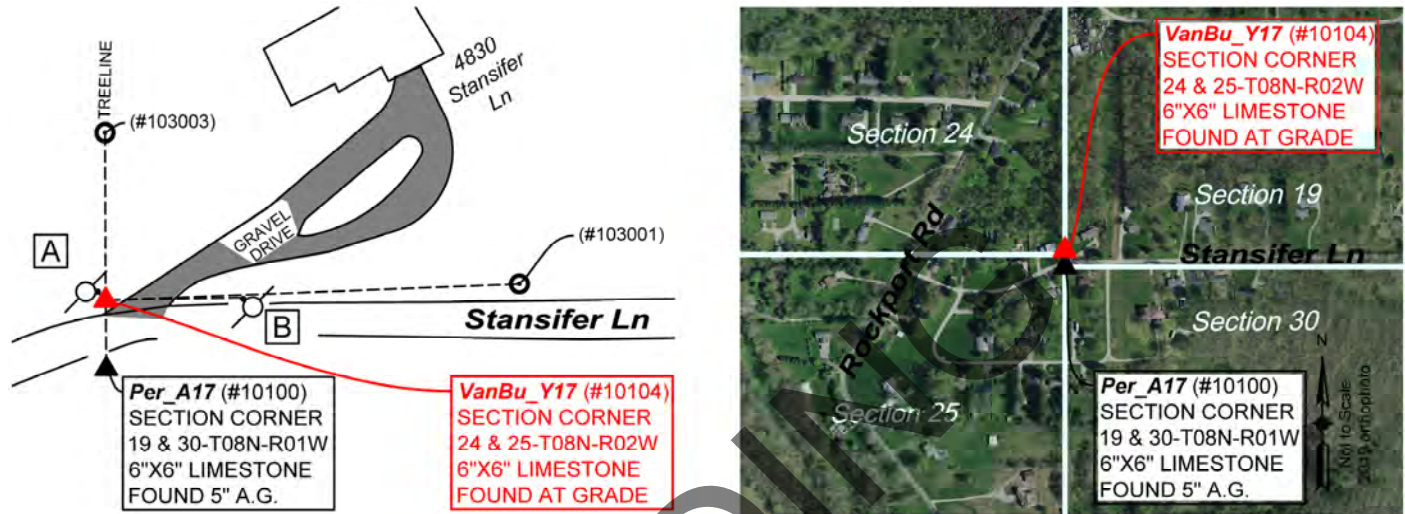


**PENDING****MONUMENT RECORD**Corner ID: **VanBu\_Y17****Section Corner**

Sections 24 & 25- T08N-R02W, 2nd P.M.  
Van Buren Township, Monroe County, Indiana

Section 24 T08N-R02W Van Buren	Section 19 T08N-R01W Perry
Section 25 T08N-R02W Van Buren	Section 30 T08N-R01W Perry

**MONUMENT:** Describe monument set or found (Include material type, scribing, distance above/below grade, dimensions.)  
Found limestone with slight hole in center 6" x 6" flush to ground.

**MONUMENT LOCATION SKETCH:****WITNESS MONUMENT TIES**

All ties to new Bearing Trees (BTs) are a mag nail set in a 1-1/2" plastic washer stamped "SURVEY MARKER - DO NOT REMOVE" and hack mark at the root crown (less than 12" above ground) perpendicular to the center of the tree, unless otherwise noted. BT diameters are noted as dbh and are measured approximately 4.5' above ground. Bearings are measured from the monument to the center of the BT, distances are measured from the monument to the mag nail.

ID	BEARING	DISTANCE	DESCRIPTION
Witness A	N 42d W	4.9'	Mag nail found 0.4' above grade on the east side of an 11" power line pole as per 2004 monument record.
Witness B	N 85d E	56.3'	Mag nail found 0.4' above grade on the west side of an 11" power line pole as per 2004 monument record.

**MONUMENT ACCESSORIES**

Other survey grade monuments that were located in the vicinity and their relation to the monument. Geodetic coordinates in this table are provided in the format Easting, Northing.

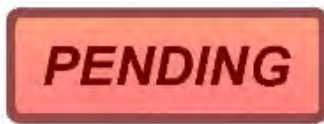
(#103003)	N 0d12'51" W	69.88'	3" x 7" Limestone found 7" above grade.
(#103001)	N 87d40'41" E	172.20'	Found 1/2" Rebar 2" west of power line pole 0.7' above grade.
(#10100)	S 0d36'48" E	29.4'	Found 6" X 6" Limestone 5" above grade.



**OFFICE OF THE MONROE COUNTY SURVEYOR • Trohn Enright-Randolph**

119 W 7th Street, Bloomington, IN 47404 • 812-349-2570 • surveyorsoffice@co.monroe.in.us





## MONUMENT RECORD

Corner ID: **VanBu\_Y17**

### Section Corner

Sections 24 & 25- T08N-R02W, 2nd P.M.  
Van Buren Township, Monroe County, Indiana

Section 24 T08N-R02W Van Buren	Section 19 T08N-R01W Perry
Section 25 T08N-R02W Van Buren	Section 30 T08N-R01W Perry

**PHOTO IDENTIFIED:** *Photo Date: 06/03/2022*



*Photo Orientation & Description: VanBu\_Y17 from above*



*Photo Orientation & Description: Looking south at VanBu\_Y17 & Per\_A17*

**ORIGINAL OR SUBSEQUENT SURVEY EVIDENCE FOUND:** *Include, search area or areas, search procedure, etc.*

*Date of Field work/Search: 05/20/2022 & 06/03/2022 By: JG & HJ Monument Found: Stone with slight circle at it's center BTs or Reference Objects Found: Found Witnesses B, C and D from 2004 monument record = Witnesses (#10104), A & B respectively. Witness E was probed for using geodetic controls supplied on 2004 monument record, but substantial grading had taken place recently. Project #: Van Buren\_Y17 Field Book: 54/61 Equipment: The basis of bearings is Grid North System NAD83(2011)/Indiana West NAVD 88, Epoch 2010.0000, geoid12b\_conus.db3, US Survey Feet, derived from GPS observations utilizing the Indiana Real-Time Network (INCORS). Coordinate data was collected with a Javad Triumph LS Network Rover. Coordinates are available upon request. Distances to witness ties were collected with a Leica Disto laser distance meter. Bearings to witness ties were collected with the internal magnetic compass of the Javad Triumph LS and were automatically adjusted to grid north and are approximately shown hereon for reference. Priority should be given to provided distances over bearings. Notes: All witness photos on file in the Monroe County Surveyors Office.*

**OTHER EVIDENCE:** *Describe corner location relative to nearby features and how to reach the corner location – note fences, roads, timber cutting lines, mow lines, clearings, plantings, streams, topo changes, etc.*

The monument is on the north side of the road between 4850 & 4830 S Stansifer Lane as you are moving east from Rockport Road. It is just west of a gravel drive. VanBu\_Y17 is an offset corner for Per\_A17. Each can be seen from the other's location.

**MONUMENT PRESERVATION:** *Describe work done to preserve existing monument.*

The stone was tested to determine it's type and painted. Geodetic controls were captured for the monument and three of it's witnesses.

**THEORY OF LOCATION:** *Describe the theory of location for acceptance of this monument. Include monument origin and associated uncertainty.*

The stone was previously witnessed by the Monroe County Surveyor, Steven V. Farkas, on July 19, 2004, using the work provided by Licensed Surveyor Eric L. Deckard (LS 29900012). Before that, the stone was previously witnessed by the Monroe County Surveyor, Edmund O. Farkas, on August 19, 1990. References on File: Tracy L. McGill survey, Location Route Control Survey Plat. Proposed I-69 Section 5 Victor Pike to S.R. 48 (3rd St.) (2013), on file at the Recorder's Office as 2013012750.IN, a Charles D.





# MONUMENT RECORD

Corner ID: **VanBu\_Y17**

## Section Corner

Sections 24 & 25- T08N-R02W, 2nd P.M.  
Van Buren Township, Monroe County, Indiana

Section 24 T08N-R02W Van Buren	Section 19 T08N-R01W Perry
Section 25 T08N-R02W Van Buren	Section 30 T08N-R01W Perry

Graham plat, Cowden 2 – Lot Minor Subdivision (2019), on file at the Recorder's Office as 2020001114.IN and a survey by Adam Christenberry, Location Route Survey for the Monroe County Highway Department Rockport Road Over Clear Creek (2021), on file at the Recorder's Office as 2021016767.IN. Historic research has not yet been performed to prove the validity of this monument.

### CERTIFICATION:

PENDING





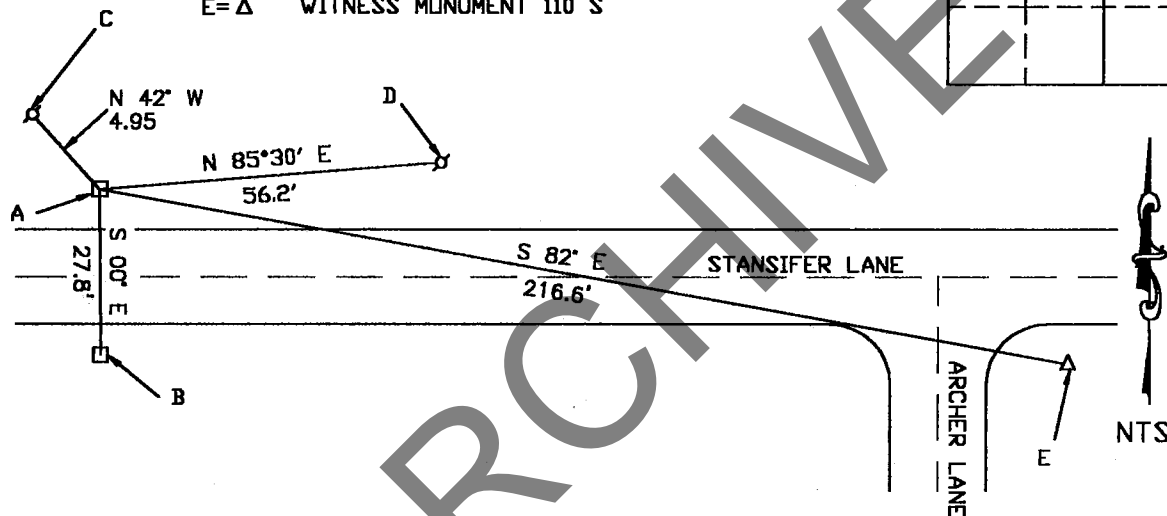
Corner I.D.# VAN BU Y-17

**MONUMENT RECORD**

STATE OF INDIANA-COUNTY OF MONROE

Section: 24, Township: 8 NORTH, Range: 2 WEST,Monument Description & Remarks: STONE FOUND NO X SLIGHT HOLE IN CENTER  
STONE 6" X 6" X 3" TALL**Recovery Tie Drawing**

- A=□ STONE FOUND SE CORNER SECTION 24, T8N, R2W  
 B=□ STONE FOUND SW CORNER SECTION 19, T8N, R1W  
 C=⌵ MAG NAIL IN POWER POLE  
 D=⌵ MAG NAIL IN POWER POLE  
 E=Δ WITNESS MONUMENT 110 S



Section Corner: STONE SW CORNER SECTION 19, T8N, R1W

Northing: 1406037.865 Easting: 3097443.634

Section Corner: STONE SE CORNER SECTION 24, T8N, R2W

Northing: 1406065.672 Easting: 3097443.466

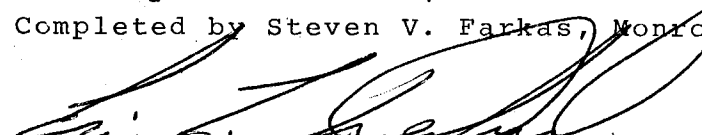
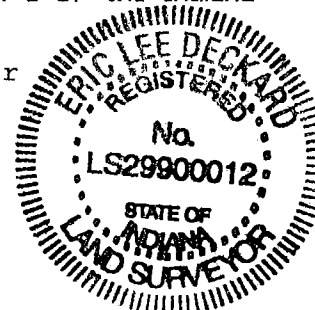
Witness: 110 S

Northing: 1406036.560 Easting: 3097658.070 Elev: 722.90

State Plane Coordinate (NAD83 Survey Feet, Indiana West Zone)

I, Eric Lee Deckard, here by certify that this document was prepared under my direction in accordance with the provisions of Section 17-3-64-4 through 17-3-64-8 of the Indiana Code, being Acts of 1965, Chapter 319; this 19th day of JULY, 2004 A.D.

Completed by Steven V. Farkas, Monroe County Surveyor

  
 Indiana Registered Land Surveyor No. LS 29900012




**PENDING****MONUMENT RECORD**Corner ID: **Per\_A17****Offset Corner**

Sections 25, 30 - T08N-R01W, 2nd P.M.  
Perry Township, Monroe County, Indiana

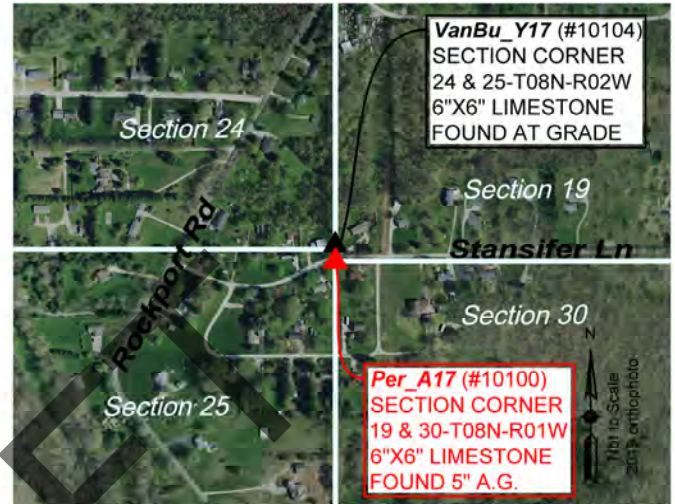
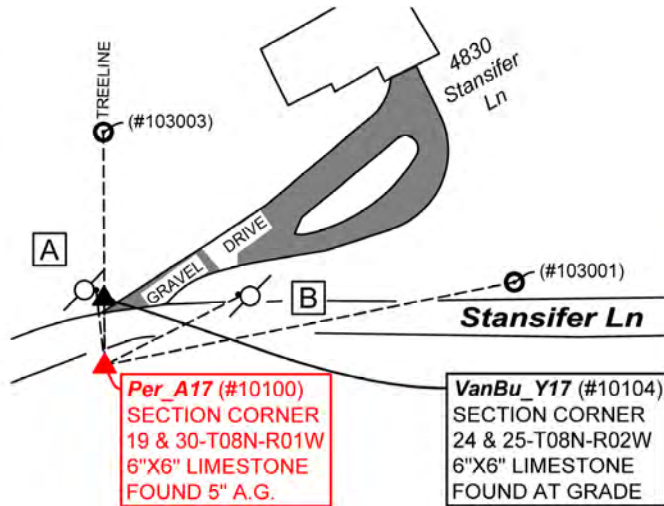
Section 24  
T08N-R02W  
Van Buren

Section 19  
T08N-R01W  
Perry

Section 25  
T08N-R02W  
Van Buren

Section 30  
T08N-R01W  
Perry

**MONUMENT:** Describe monument set or found (Include material type, scribing, distance above/below grade, dimensions.)  
Found 6" x 6" Limestone found 5" above grade +/- 6' south of Stansifer Lane

**MONUMENT LOCATION SKETCH:****WITNESS MONUMENT TIES**

All ties to new Bearing Trees (BTs) are a mag nail set in a 1-1/2" plastic washer stamped "SURVEY MARKER - DO NOT REMOVE" and hack mark at the root crown (less than 12" above ground) perpendicular to the center of the tree, unless otherwise noted. BT diameters are noted as dbh and are measured approximately 4.5' above ground. Bearings are measured from the monument to the center of the BT, distances are measured from the monument to the mag nail.

ID	BEARING	DISTANCE	DESCRIPTION
Witness A	N 7d W	31.8'	Mag nail found 0.4' above grade on the east side of an 11" power line pole as per 2004 monument record.
Witness B	N 63d E	64.0'	Mag nail found 0.4' above grade on the west side of an 11" power line pole as per 2004 monument record.

**MONUMENT ACCESSORIES**

Other survey grade monuments that were located in the vicinity and their relation to the monument.

(#103003)	N 0d19'41" W	97.82'	3" x 7" Limestone found 7" above grade.
(#103001)	N 78d31'4" E	175.40'	Found 1/2" rebar 2" west of power line pole 0.7' above grade.
(#10104)	N 0d36'48" W	29.4'	Found 6" X 6" Limestone with slight hole at grade.



**OFFICE OF THE MONROE COUNTY SURVEYOR • Trohn Enright-Randolph**

119 W 7th Street, Bloomington, IN 47404 • 812-349-2570 • surveyoroffice@co.monroe.in.us



**PENDING**

# MONUMENT RECORD

Corner ID: **Per\_A17**

**Offset Corner**

Sections 25, 30 - T08N-R01W, 2nd P.M.  
Perry Township, Monroe County, Indiana

Section 24 T08N-R02W Van Buren	Section 19 T08N-R01W Perry
Section 25 T08N-R02W Van Buren	Section 30 T08N-R01W Perry

**PHOTO IDENTIFIED:** Photo Date: 05/20/2022 & 06/10/2022



Photo Orientation & Description: Per\_A17 from above



Photo Orientation & Description: looking north at Per\_A17



Photo Orientation & Description: Per\_A17 from the southwest



Photo Orientation & Description: Per\_A17 from the VanBu\_Y17

## ORIGINAL OR SUBSEQUENT SURVEY EVIDENCE FOUND: Include, search area or areas, search procedure, etc.

Date of Field work/Search: 5/20/2022 By: HJ & JG Monument Found: Stone 5" above ground BTs or Reference Objects Found: Witnesses C and D from the 2004 monument record were found Project #: VanBu\_17 Field Book: 54/61 Equipment: Coordinate data was collected with a Javad Triumph LS Network Rover. The basis of bearings is Grid North NAD83(2011), Indiana West Zone, Epoch 2010.0000, Geoid Model G2012BU7, Datum NAD83\_NO\_TRANS, US Survey Feet, derived from GPS observations utilizing the Indiana Real-Time Network (INCORS). Distances obtained with GPS have not been adjusted to ground. Coordinates are available upon request. Distances to witness ties were collected with a 100' measuring tape. Bearings to witness ties were collected with the internal magnetic compass of the Javad Triumph LS and were automatically adjusted to grid north and are approximately shown hereon for reference. Priority should be given to provided distances over bearings. Notes: All witness photos on file in the Monroe County Surveyors Office.

**OTHER EVIDENCE:** Describe corner location relative to nearby features and how to reach the corner location – note fences, roads, timber cutting lines, mow lines, clearings, plantings, streams, topo changes, etc.

The monument is on the south side of the road between 4849 & 4841 S Stansifer Lane as you are moving east from Rockport Road. It is easily visible with no discernable landscaping between it and the road. Per\_A17 is an offset corner of Van\_U17.

**MONUMENT PRESERVATION:** Describe work done to preserve existing monument.

Geodetic Coordinates were collected for Per\_A17 and VanBu\_Y17 along with two new witnesses (#103003) and (#103001) here within.







## MONUMENT RECORD

Corner ID: **Per\_A17**

### Offset Corner

Sections 25, 30 - T08N-R01W, 2nd P.M.  
Perry Township, Monroe County, Indiana

Section 24 T08N-R02W Van Buren	Section 19 T08N-R01W Perry
Section 25 T08N-R02W Van Buren	Section 30 T08N-R01W Perry

**THEORY OF LOCATION:** *Describe the theory of location for acceptance of this monument. Include monument origin and associated uncertainty.*  
The stone was previously witnessed by the Monroe County Surveyor, Edmund O. Farkas, on August 20, 1990. References on File: Tracy L. McGill survey, Location Route Control Survey Plat. Proposed I-69 Section 5 Victor Pike to S.R. 48 (3rd St.) (2013), on file at the Recorder's Office as 2013012750.IN, Adam Christenberry survey, Location Route Survey for the Monroe County Highway Department Rockport Road Over Clear Creek (2021), on file at the Recorder's Office as 2021016767.IN and an Eric Deckard survey, Bettner Boundary Survey (2021), on file at the Recorder's Office as 2021014997.IN. Historic research has not yet been performed to prove the validity of this monument.

### CERTIFICATION:

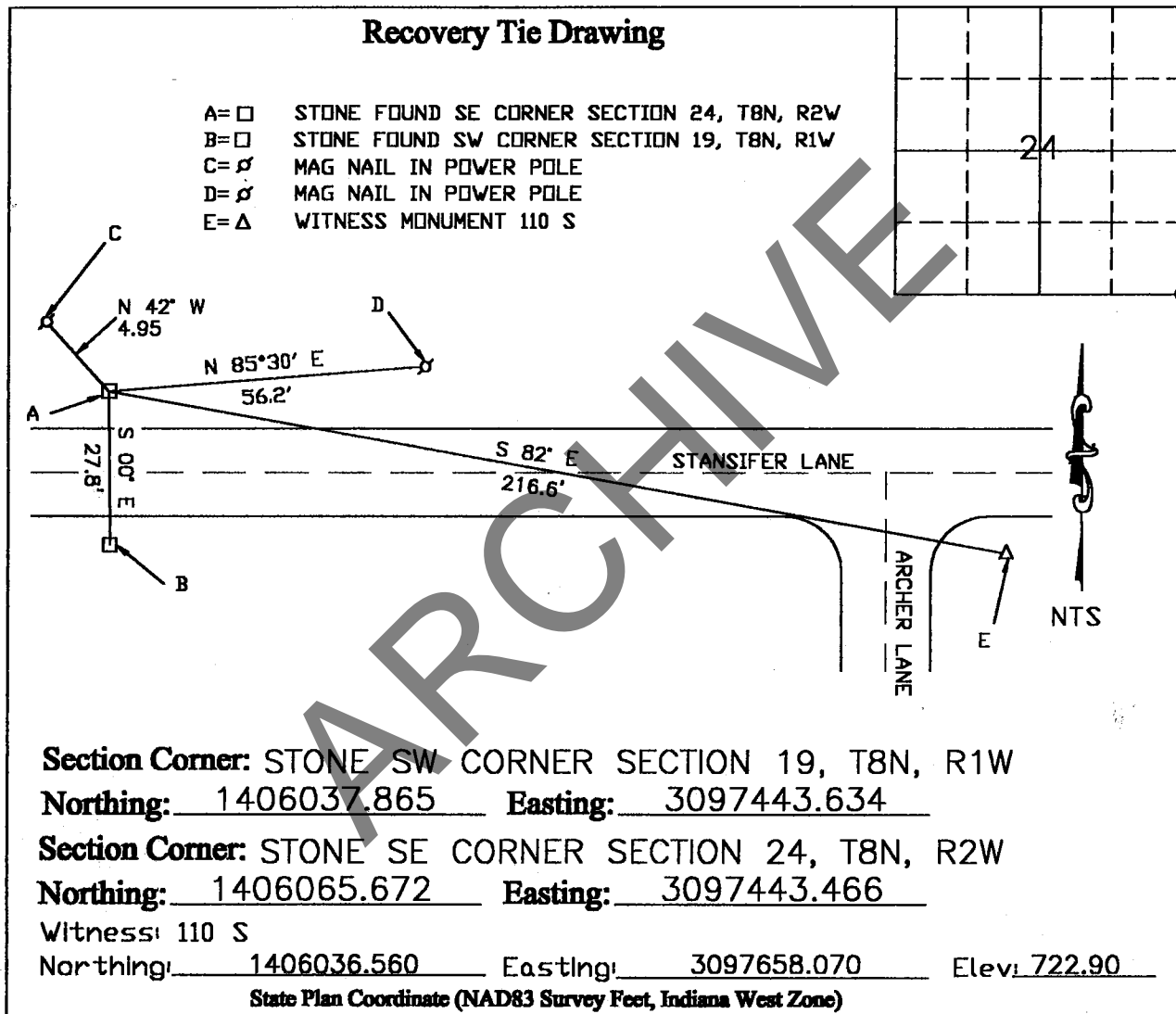
DRAFT



Corner I.D.# VAN BU Y-17

**MONUMENT RECORD**

STATE OF INDIANA-COUNTY OF MONROE

Section: 24, Township: 8 NORTH, Range: 2 WEST,Monument Description & Remarks: STONE FOUND NO X SLIGHT HOLE IN CENTER  
STONE 6" X 6" X 3" TALL

I, Eric Lee Deckard, here by certify that this document was prepared under my direction in accordance with the provisions of Section 17-3-64-4 through 17-3-64-8 of the Indiana Code, being Acts of 1965, Chapter 319; this 19th day of JULY, 2004 A.D.

Completed by Steven V. Farkas, Monroe County Surveyor

*[Signature]*  
Indiana Registered Land Surveyor No. LS 29900012



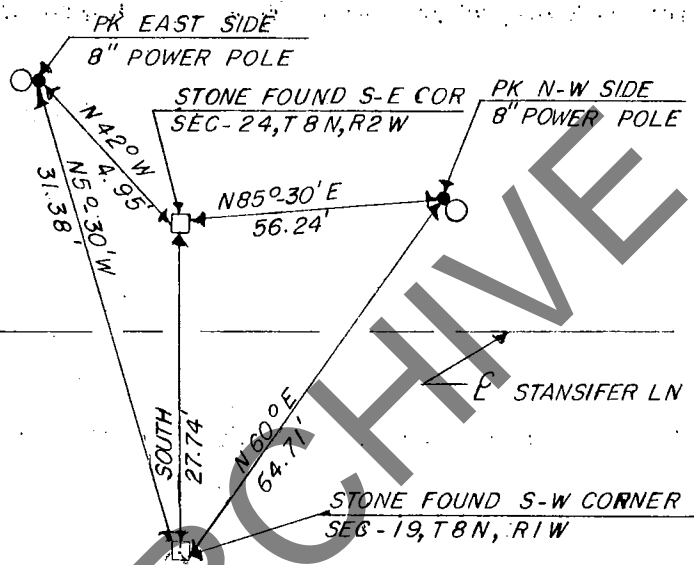
## STATE OF INDIANA - COUNTY OF MONROE

SECTION 19, TOWNSHIP 8 N, RANGE 1 W

## MONUMENT DESCRIPTION &amp; REMARKS

FOUND STONE SOLID IN GROUND WITH NO "X".STONE= 6" x 6" x 1" OUT OF GROUND

## RECOVERY TIE DRAWING



(●) AT CORNER



NOT TO SCALE

STATE OF INDIANA

COUNTY OF MONROE

I, EDMUND O. FARKAS HEREBY CERTIFY THAT THIS DOCUMENT WAS PREPARED UNDER MY DIRECTION IN ACCORDANCE WITH THE PROVISIONS OF SECTION 17-3-64-4 - 17-3-64-8 OF THE INDIANA CODE, BEING ACTS OF 1965, CHAPTER 319; AND THE ABOVE DATA IS GIVEN UNDER MY HAND AND SEAL THIS 20 TH DAY OF AUGUST, 19 90 A.D.

SPACE  
RESERVED  
FOR  
RECORDING  
OFFICER.

INDIANA REGISTERED LAND SURVEYOR NO. \_\_\_\_\_

OR \_\_\_\_\_

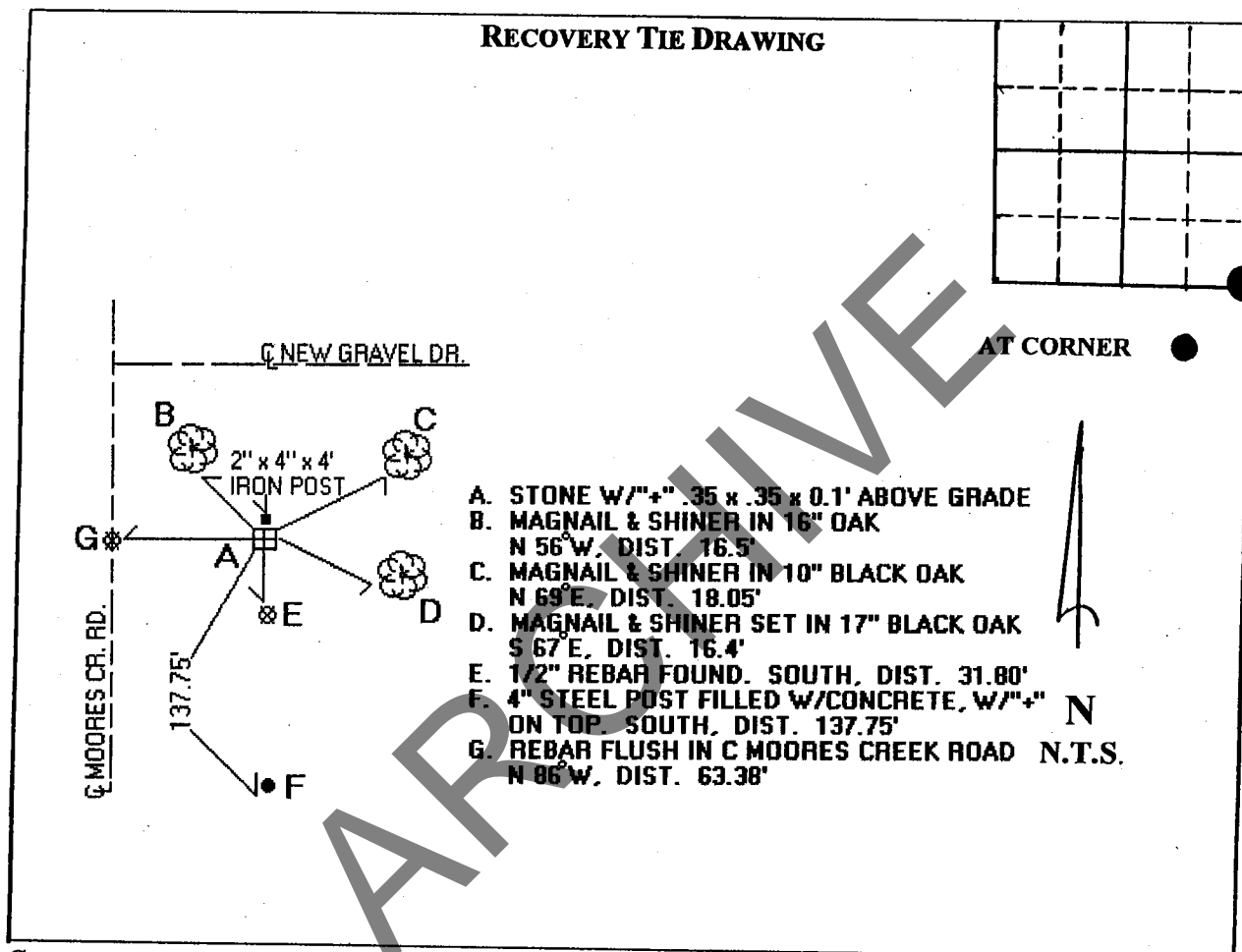
UNITED STATES GOVERNMENT AGENCY

TOWNSHIP:  
PERRYCORNER I.D.  
A-17

TITLE

**MONUMENT RECORD**

STATE OF INDIANA ~ COUNTY OF MONROE

SECTION 24, TOWNSHIP 8 NORTH, RANGE 1 WESTMONUMENT DESCRIPTION & REMARKS: STONE WITH "+", 1' ABOVE GRADE;  
4.5" x 4.5" x 0.1'; MARKING THE SOUTH EAST CORNER OF SECTION 24.

STATE OF INDIANA

COUNTY OF MONROE

I, STEVEN V. FARKAS, HEREBY CERTIFY THAT THIS DOCUMENT WAS  
PREPARED UNDER MY DIRECTION IN ACCORDANCE WITH THE PROVISIONS OF SECTION  
17-3-64-4 THROUGH 17-3-64-8 OF THE INDIANA CODE, BEING ACTS OF 1965, CHAPTER 319;  
AND THE ABOVE DATA IS GIVEN UNDER MY HAND AND SEAL  
THIS \_\_\_\_\_ DAY OF \_\_\_\_\_, 200\_\_ A.D.

INDIANA REGISTERED LAND SURVEYOR No. \_\_\_\_\_ OR

UNITED STATES GOVERNMENT AGENCY

TITLE

FIELD BOOK: \_\_\_\_\_

PAGE: \_\_\_\_\_

DRAFT #: 91



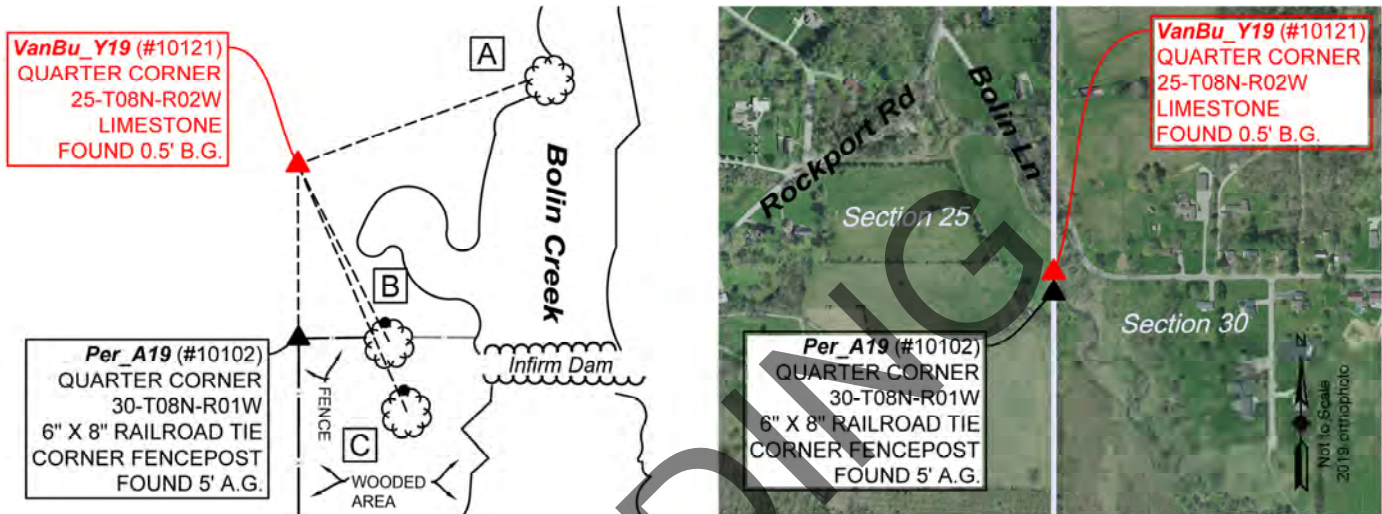
**PENDING****MONUMENT RECORD**Corner ID: **VanBu\_Y19****Quarter Corner**

Section 25- T08N-R02W, 2nd P.M.

Van Buren Township, Monroe County, Indiana

Section 25  
T08N-R02W  
Van BurenSection 30  
T08N-R01W  
Perry

**MONUMENT:** Describe monument set or found (Include material type, scribing, distance above/below grade, dimensions.)  
6" x 17" Limestone 6" below grade.

**MONUMENT LOCATION SKETCH:****WITNESS MONUMENT TIES**

All ties to new Bearing Trees (BTs) are a mag nail set in a 1-1/2" plastic washer stamped "SURVEY MARKER - DO NOT REMOVE" and hack mark at the root crown (less than 12" above ground) perpendicular to the center of the tree, unless otherwise noted. BT diameters are noted as dbh and are measured approximately 4.5' above ground. Bearings are measured from the monument to the center of the BT, distances are measured from the monument to the mag nail.

ID	BEARING	DISTANCE	DESCRIPTION
Witness A	N 70d E	38.3'	Measured to west face of 37" American Sycamore Tree. Eastern roots stretch into Bolin Creek.
Witness B	S 27d E	31.1'	Found magnetic signal on north side of 26" bifurcated Red Cedar as per Witness C on Per_A19's 2013 monument record.
Witness C	S 24d E	42.1'	Found magnetic signal on north side of 10" Black Walnut Tree as per Witness C on Per_A19's 2013 monument record.

**MONUMENT ACCESSORIES**

Other survey grade monuments that were located in the vicinity and their relation to the monument.

(#10102)	S 0d22'56" E	27.17'	Found 6" x 8" railroad tie corner fencepost 5' above grade.
----------	--------------	--------	---

**OFFICE OF THE MONROE COUNTY SURVEYOR • Trohn Enright-Randolph**

119 W 7th Street, Bloomington, IN 47404 • 812-349-2570 • surveyoroffice@co.monroe.in.us

**PENDING****MONUMENT RECORD**Corner ID: **VanBu\_Y19****Quarter Corner**

Section 25- T08N-R02W, 2nd P.M.

Van Buren Township, Monroe County, Indiana

Section 25  
T08N-R02W  
Van BurenSection 30  
T08N-R01W  
Perry**PHOTO IDENTIFIED:** Photo Date: 02/07/2023

Photo Orientation &amp; Description: VanBu\_Y19 from above west side



Photo Orientation &amp; Description: VanBu\_Y19 from above east side



Photo Orientation &amp; Description: Looking west at VanBu\_Y19



Photo Orientation &amp; Description: Looking east at VanBu\_Y19, Per\_A19 and Witnesses A, B &amp; C

**ORIGINAL OR SUBSEQUENT SURVEY EVIDENCE FOUND:** Include, search area or areas, search procedure, etc.

Date of Field work/Search: 02/07/2023 By: JG & HJ Monument Found: Limestone BTs or Reference Objects Found: N/A Project #: Van Buren Preservation Field Book: 55/24 Equipment: The basis of bearings is Grid North System NAD83(2011)/Indiana West NAVD 88, Epoch 2010.0000, geoid12b\_conus.db3, US Survey Feet, derived from GPS observations utilizing the Indiana Real-Time Network (INCORS). Coordinate data was collected with a Javad Triumph LS Network Rover. Coordinates are available upon request. Distances to witness ties were collected with a 100' measuring tape. Bearings to witness ties were collected with the internal magnetic compass of the Javad Triumph LS and were automatically adjusted to grid north and are approximately shown hereon for reference. Priority should be given to provided distances over bearings. Notes: All witness photos on file in the Monroe County Surveyors Office.





**MONUMENT RECORD**Corner ID: **VanBu\_Y19****Quarter Corner**

Section 25- T08N-R02W, 2nd P.M.  
Van Buren Township, Monroe County, Indiana

Section _25 T08N-R02W Van Buren	Section 30 T08N-R01W Perry
---------------------------------------	----------------------------------

**OTHER EVIDENCE:** *Describe corner location relative to nearby features and how to reach the corner location – note fences, roads, timber cutting lines, mow lines, clearings, plantings, streams, topo changes, etc.*

The monument is +/- 27' north of offset monument Per\_A19, close to Bolin Creek. The best entry point is at the cattle gate at the southern intersection of Rockport Road and Bolin Lane. Driving along the western side of the parcel, one can find the low part of the creek and cross. From there, head southeasterly and look for survey signs and witnesses. During summer, the land is used to growing baling grass according to the owner.

**MONUMENT PRESERVATION:** *Describe work done to preserve existing monument.*

Monument was painted and buried with a magnet. "Protect Nearby Survey Marker" sign was set 8" east of the stone 3.5' above grade. Geodetic controls were captured for the monument and its offset corner. Three other witnesses were established. Owner was made aware of existence of monuments.

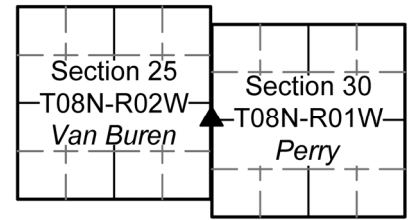
**THEORY OF LOCATION:** *Describe the theory of location for acceptance of this monument. Include monument origin and associated uncertainty.*

The stone is of unknown origin. Its location corroborates with the distance and bearings stated in the following documents: a survey by Marty James, Boundary Survey for Independent Limestone Company (2007), on file at the Recorder's Office as 2007006888.IN and a survey by Adam Christenberry, Location Route Survey for the Monroe County Highway Department Rockport Road Over Clear Creek (2021), on file at the Recorder's Office as 2021016767.IN. Historic research has not yet been performed to prove the validity of this monument.

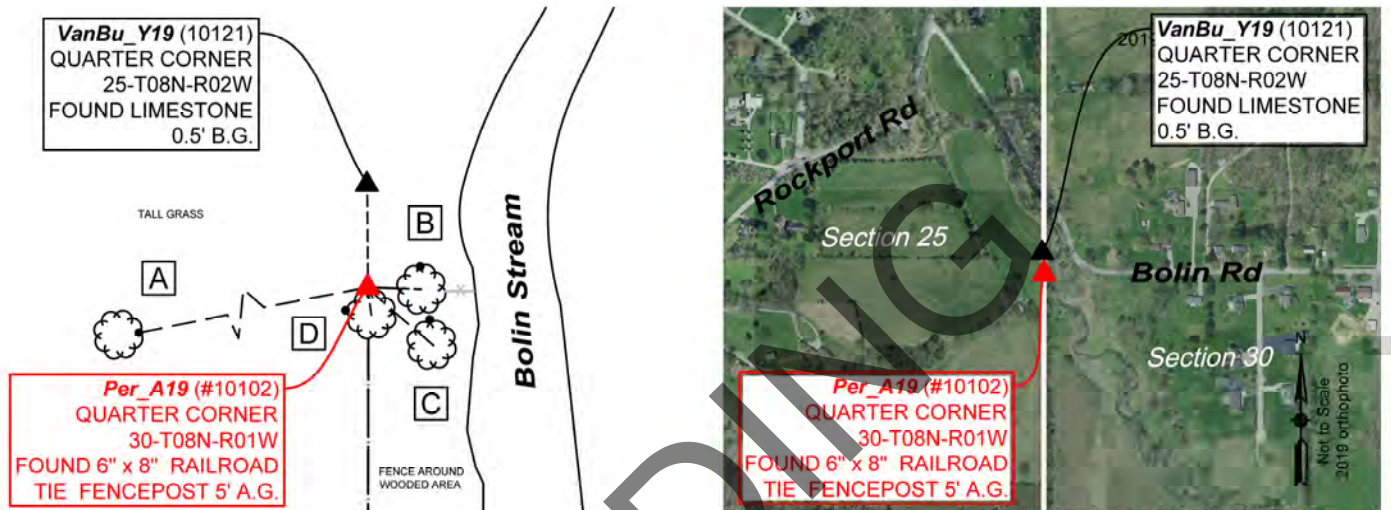
**CERTIFICATION:**

PENDING



**PENDING****MONUMENT RECORD**Corner ID: **Per\_A19****Quarter Corner**Section 30- T08N-R01W, 2nd P.M.  
Perry Township, Monroe County, Indiana

**MONUMENT:** Describe monument set or found (Include material type, scribing, distance above/below grade, dimensions.)  
Found 6" x 8" x 5' Railroad Tie Corner Fencepost leaning east yet solidly in place in concrete base.

**MONUMENT LOCATION SKETCH:****WITNESS MONUMENT TIES**

All ties to new Bearing Trees (BTs) are a mag nail set in a 1-1/2" plastic washer stamped "SURVEY MARKER - DO NOT REMOVE" and hack mark at the root crown (less than 12" above ground) perpendicular to the center of the tree, unless otherwise noted. BT diameters are noted as dbh and are measured approximately 4.5' above ground. Bearings are measured from the monument to the center of the BT, distances are measured from the monument to the mag nail.

ID	BEARING	DISTANCE	DESCRIPTION
Witness A	S 78d W	159.0'	Mag nail and washer set 30" above grade on the east side of a 9" black walnut tree.
Witness B	S 88d E	14.1'	Found magnetic signal 13" above grade on the north side of a 26" bifurcated red cedar tree as per 2013 monument record.
Witness C	S 56d E	20.3'	Found magnetic signal 11" above grade on the north side of an 11" black walnut tree as per 2013 monument record
Witness D	S 8d E	7.2'	Found magnetic signal 12" above grade on the north side of a 14" black walnut tree as per 2013 monument record.

**MONUMENT ACCESSORIES**

Other survey grade monuments that were located in the vicinity and their relation to the monument.

(#10121)	N 0d22'56" E	27.17'	Found Irregular Shaped Limestone 0.5' below grade.
----------	--------------	--------	--





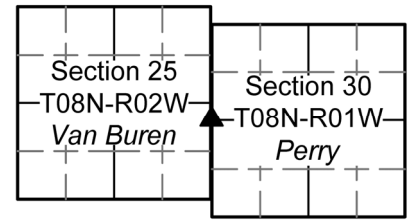
**PENDING****MONUMENT RECORD**Corner ID: **Per\_A19****Quarter Corner**Section 30- T08N-R01W, 2nd P.M.  
Perry Township, Monroe County, Indiana**PHOTO IDENTIFIED:** Photo Date: 06/03/2022

Photo Orientation & Description: Looking east at Per\_A19 with witnesses B C & D present



Photo Orientation & Description: Looking southwest at Per\_A19

**ORIGINAL OR SUBSEQUENT SURVEY EVIDENCE FOUND:** Include, search area or areas, search procedure, etc.

Date of Field work/Search: 06/03/2022 By: JG & HJ Monument Found: Fencepost BTs or Reference Objects Found: Found Witnesses B, C & D from 2013 monument record Project #: Van Buren Preservation Field Book: 54/63 Equipment: The basis of bearings is Grid North System NAD83(2011)/Indiana West NAVD 88, Epoch 2010.0000, geoid12b\_conus.db3, US Survey Feet, derived from GPS observations utilizing the Indiana Real-Time Network (INCORS). Coordinate data was collected with a Javad Triumph LS Network Rover. Coordinates are available upon request. Distances to witness ties were collected with a Leica Disto laser distance meter and with the 100' tape. Bearings to witness ties were collected with the internal magnetic compass of the Javad Triumph LS and were automatically adjusted to grid north and are approximately shown hereon for reference. Priority should be given to provided distances over bearings. Notes: All witness photos on file in the Monroe County Surveyors Office.

**OTHER EVIDENCE:** Describe corner location relative to nearby features and how to reach the corner location – note fences, roads, timber cutting lines, mow lines, clearings, plantings, streams, topo changes, etc.

The monument still held a "Protect Nearby Survey Markers" sign on its east side. The monument is a corner fencepost for the remains of a fence that runs north-south and west to east before terminating at the embankment of Bolin Creek. Per\_A19 sits on a tract of land that runs parallel along the west side of Bolin Road. The land is primarily used growing baling grass according to the owner. The best way to access the land is at a cattle gate on the south intersection of Rockport Road and Bolin Road. Driving south along the west side of the parcel, one could cross the creek at it's shallow point.

Per\_A19 is an offset monument to VanBu\_Y19. MCSO was able to excavate a stone that at offset coordinates and measurements provided in the Adam Christenberry survey referenced below.

**MONUMENT PRESERVATION:** Describe work done to preserve existing monument.

Geodetic controls were captured for the monument at the center of its concrete base on the west side. The concrete base of the fencepost was partially unearthed. Still this post and its anchor would not budge when tested. A new sign was set on the west side for better visibility in hopes to protect the monument from machinery and livestock. A new witness was set on the west side of the field.

**OFFICE OF THE MONROE COUNTY SURVEYOR • Trohn Enright-Randolph**

119 W 7th Street, Bloomington, IN 47404 • 812-349-2570 • surveyoroffice@co.monroe.in.us

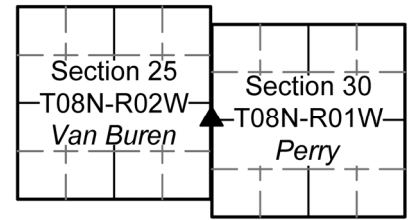


## MONUMENT RECORD

Corner ID: **Per\_A19**

**Quarter Corner**

Section 30- T08N-R01W, 2nd P.M.  
Perry Township, Monroe County, Indiana



**THEORY OF LOCATION:** *Describe the theory of location for acceptance of this monument. Include monument origin and associated uncertainty.*  
The fencepost was previously witnessed by the Monroe County Surveyor, Kevin Enright, on February 7, 2013 and accepted by the Monroe County Surveyor Review Board on February 26, 2013. The 2013 Monument Record accepted the fencepost per a plat by Phillip O. Tapp, Mark Freeman Administrative Subdivision (2002), recorded as Instrument Number 2002005200.IN; a location control route survey by Dustin Ballard, I-69 Section 4 Segment 9 (2011), on file at the Recorder's Office as 2011008297.IN; an Eric Deckard plat, Me-Me's Refuge Type D & Type E Administrative Subdivision (2012), on file at the Recorder's Office as a final plat under the instrument number 2013005242.IN. Other References on File: Tracy L McGill survey, Location Route Control Survey Plat Proposed I-69 Section 5 Victor Pike (2013), on file at the Recorder's Office as 2013012570.IN; Adam Christenberry survey, Location Route Survey for the Monroe County Highway Department Rockport Road Over Clear Creek (2021), on file at the Recorder's Office as 2021016767.IN. Historic research has not yet been performed to prove the validity of this monument.

### CERTIFICATION:

PENDING



**MONUMENT RECORD**  
**State of Indiana - County of Monroe**

Section: 30

Township: 8 North

Range: 1 West

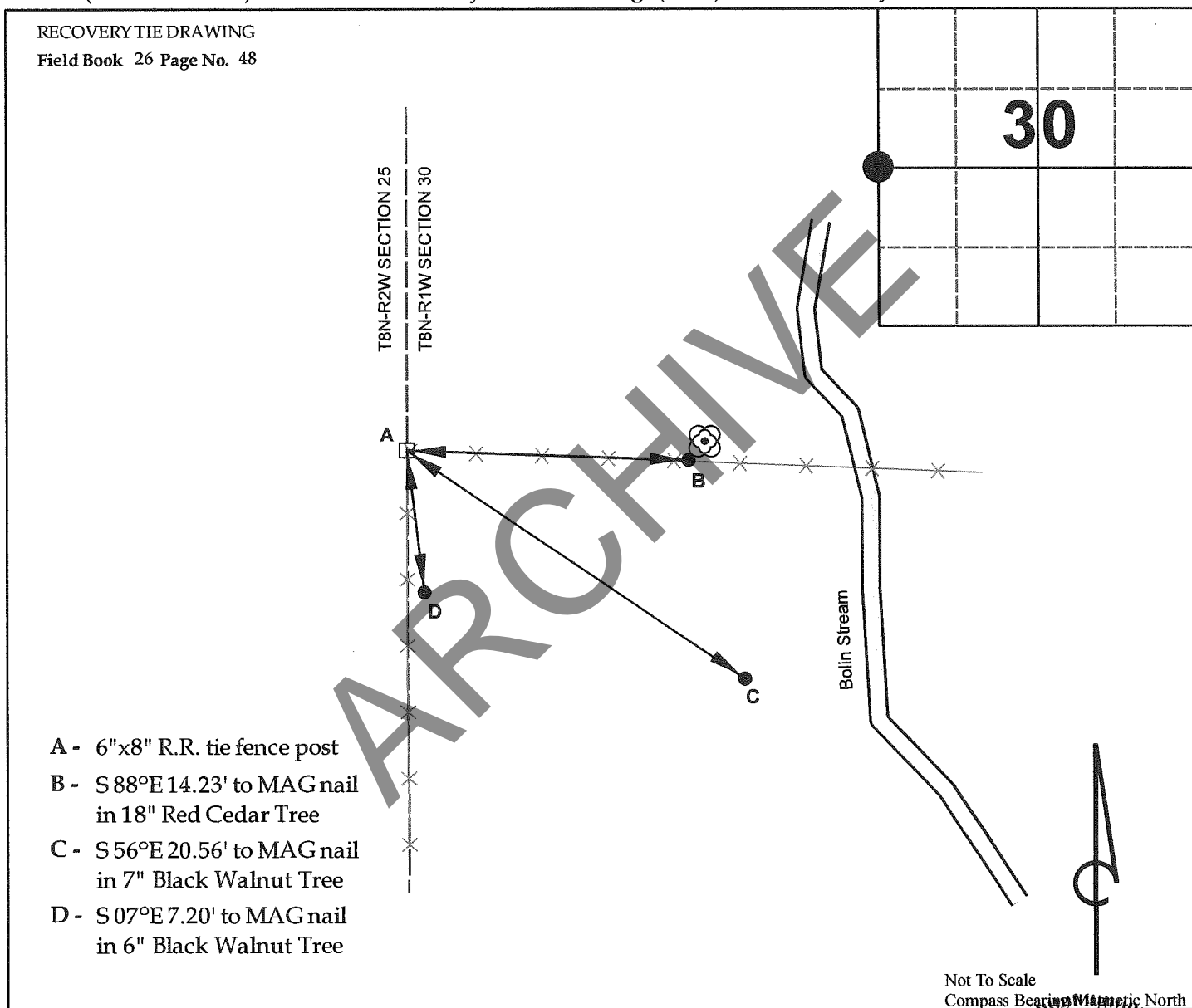
Corner ID: Per A-19

**Monument Description & Remarks:** 6"x8" R.R. tie fence post corner set in concrete. Survey Sign  
 4.5ft above ground at point A

**References On File:** Phillip O. Tapp survey, Mark Freeman (2002), on file in Recorder Office  
 (IN2002005200); Dustin Ballard survey, I-69 Section 4 Segment 9 (2011), on file in Recorder  
 Office (IN2011008297) & Eric Deckard survey, Me-Me's Refuge (2012), on file in Surveyor Office

RECOVERY TIE DRAWING

Field Book 26 Page No. 48

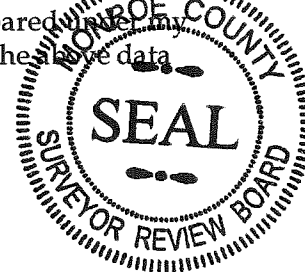
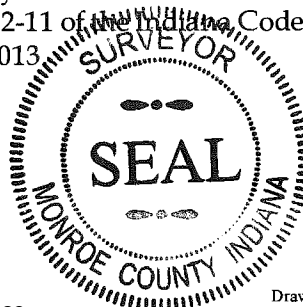


I, Kevin P. Enright, Monroe County Surveyor, hereby certify that this document was prepared under my direction in accordance with the provisions of section 36-2-12-11 of the Indiana Code; and the data is given under my hand and seal this 7th day of February, 2013.

*Kevin P. Enright*

Administered by the Monroe County Surveyor Review Board

2-26-2013

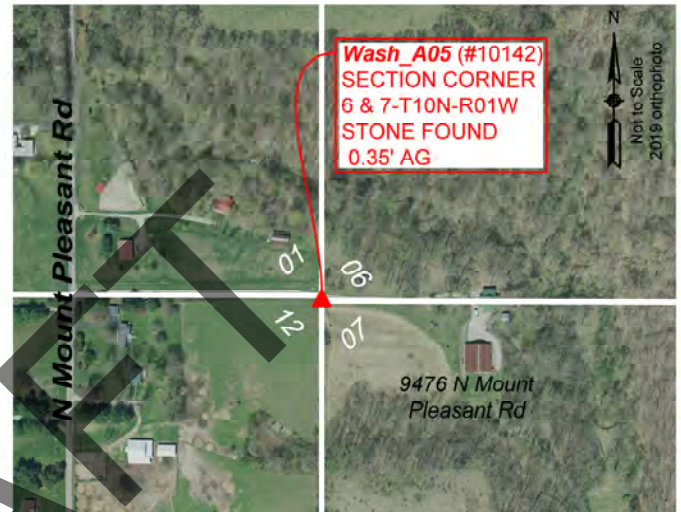
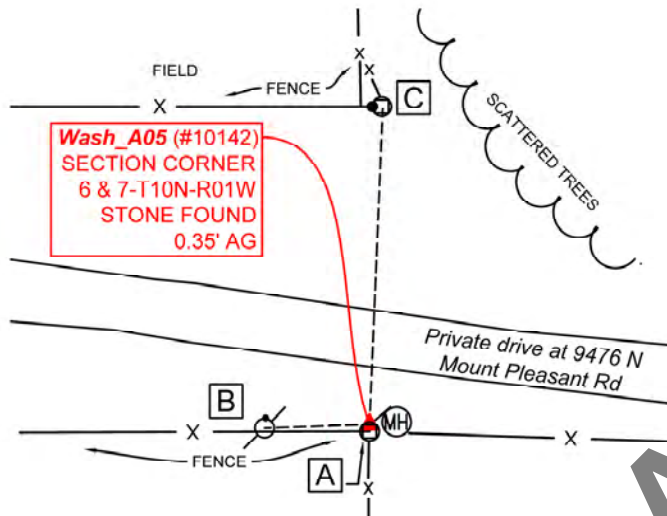


**PENDING****MONUMENT RECORD**Corner ID: **Wash\_A05****Section Corner**

Sections 06 & 07- T10N-R01W, 2nd P.M.  
Washington Township, Monroe County, Indiana

Section 01 T10N-R02W	Section 06 T10N-R01W
Section 12 T10N-R02W	Section 07 T10N-R01W

**MONUMENT:** Describe monument set or found (Include material type, scribing, distance above/below grade, dimensions.)  
0.5' x 0.9' Limestone found with 1/2" hole drilled near center 0.35' above grade.

**MONUMENT LOCATION SKETCH:****WITNESS MONUMENT TIES**

ID	BEARING	DISTANCE	DESCRIPTION
Witness A	S 0d E	1.1'	Mag Nail found 0.9' above grade on the north side of a 15" round fence post with east, west, and south running fence. A "Protect Nearby Survey Marker" sign was found 3.1' above grade attached to the north side of the pole.
Witness B	S 88d W	16.4'	Mag Nail found 0.8' above grade on the north side of a 12" power pole
Witness C	N 14d E	51.1'	Mag Nail found 2.5' above grade on the west side of a 12" round post with north and west running fence
MONUMENT ACCESSORIES			
(#103033)	N 50d56'49" E	4.19'	Northern most point of 14" Manhole.





**PENDING****MONUMENT RECORD**Corner ID: **Wash\_A05****Section Corner**

Sections 06 & 07- T10N-R01W, 2nd P.M.  
Washington Township, Monroe County, Indiana

Section 01 T10N-R02W	Section 06 T10N-R01W
Section 12 T10N-R02W	Section 07 T10N-R01W

**PHOTO IDENTIFIED:** Photo Date: 09/01/2022

Photo Orientation &amp; Description: Wash\_A05 from above



Photo Orientation &amp; Description: Looking east at Wash\_A05 and Monument Accessory (#103033) and Witness A

**ORIGINAL OR SUBSEQUENT SURVEY EVIDENCE FOUND:** Include, search area or areas, search procedure, etc.

Date of Field work/Search: 08/20/2020 & 09/01/2022 By: CAR, JG & HJ Monument Found: Limestone BTs or Reference Objects Found: MCSO had visited this site in 2000 and established Witnesses A, B & C. All three were found in 2020 & 2022 The site was visited again in 2020 and its observations were again verified in 2022. Project #: Washington Monuments Field Book: 54/11 Equipment: The basis of bearings is Grid North System NAD83(2011)/Indiana West NAVD 88, Epoch 2010.0000, geoid12b\_conus.db3, US Survey Feet, derived from GPS observations utilizing the Indiana Real-Time Network (INCORS). Coordinate data was collected with a Javad Triumph LS Network Rover. Coordinates are available upon request. Distances to witness ties were collected with a Leica Disto laser distance meter and a 100' measuring tape. Bearings to witness ties were collected with the internal magnetic compass of the Javad Triumph LS and were automatically adjusted to grid north and are approximately shown hereon for reference. Priority should be given to provided distances over bearings. Notes: All witness photos on file in the Monroe County Surveyors Office.

**OTHER EVIDENCE:** Describe corner location relative to nearby features and how to reach the corner location – note fences, roads, timber cutting lines, mow lines, clearings, plantings, streams, topo changes, etc.

Monument is on the south side of a private drive for 9476 N Mt. Pleasant Road, approximately 1' north of a fence that runs east-west.

**MONUMENT PRESERVATION:** Describe work done to preserve existing monument.

Witnesses were established. Geodetic controls were established for monument and accessory (#103033). "Protect Nearby Survey Marker" sign was set (2000).

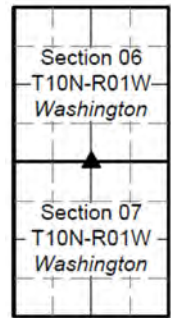
**THEORY OF LOCATION:** Describe the theory of location for acceptance of this monument. Include monument origin and associated uncertainty.

The stone was previously witnessed by the Monroe County Surveyor, Kevin Enright, on May 9, 2000, however the monument was never certified by the Surveyor Review Board. The 2000 Monument Record accepted the stone per a boundary survey by Lee Utt for Robert and Virginia Hays, 67.24 Acre Survey(1999), on file at the Recorder's Office as 1999023756.IN. Licensed Surveyor, Eric L. Deckard, in a survey for Larry and Dawana Page(2020); on file at the Recorder's Office as 2020018655.IN, stated that the monument appeared to be a common corner with BeBl\_Y05. MCSO also probed for BeBl\_Y05 4 links north of Wash\_A05 as the GLO maps indicated, but no stone was found. Historic research has not yet been performed to prove the validity of this monument.

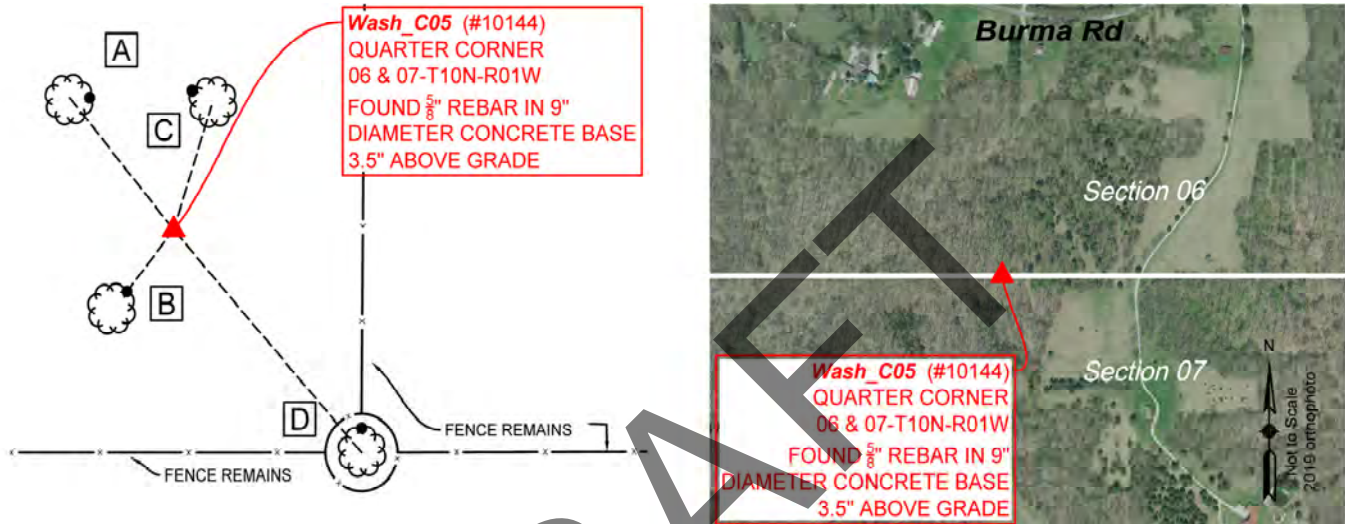
**CERTIFICATION:**

**PENDING****MONUMENT RECORD**Corner ID: **Wash\_C05****Quarter Corner**

Sections 06 & 07 – T10N-R01W, 2nd P.M.  
Washington Township, Monroe County, Indiana



**MONUMENT:** Describe monument set or found (Include material type, scribing, distance above/below grade, dimensions.)  
Found 5/8" rebar in 9" diameter concrete base flush to ground and with rebar 3.5" above grade.

**MONUMENT LOCATION SKETCH:****WITNESS MONUMENT TIES**

All ties to new Bearing Trees (BTs) are a mag nail set in a 1-1/2" plastic washer stamped "SURVEY MARKER - DO NOT REMOVE" and hack mark at the root crown (less than 12" above ground) perpendicular to the center of the tree, unless otherwise noted. BT diameters are noted as dbh and are measured approximately 4.5' above ground. Bearings are measured from the monument to the center of the BT, distances are measured from the monument to the mag nail.

ID	BEARING	DISTANCE	DESCRIPTION
Witness A	N 40d W	26.3'	Set mag nail and washer in hack on east side of 3" Black Maple Tree 0.3' above grade.
Witness B	S 39d W	12.1'	Found "Protect Nearby Survey Marker" sign nailed to the east side of a 14" white oak tree 4.5' above grade as per 2000 monument record. Measured to face of sign.
Witness C	N 28d E	19.8'	Found mag nail on the northwest side of a 16" Red Oak Tree 0.6' above grade as per 2000 monument record.
Witness D	S 42d E	45.6'	Found multiple magnetic signals in 32" American Beech Tree, wrapped in barbwire, serving as corner post for south/north and west/east fence as per 2000 monument record.





**PENDING****MONUMENT RECORD**Corner ID: **Wash\_C05****Quarter Corner**

Sections 06 & 07 – T10N-R01W, 2nd P.M.  
Washington Township, Monroe County, Indiana

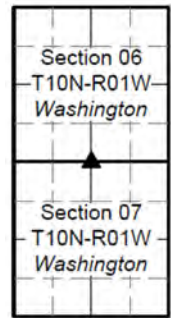
**PHOTO IDENTIFIED:** Photo Date: 09/02/2022

Photo Orientation &amp; Description: Wash\_C05 from above



Photo Orientation &amp; Description: Looking north at Wash\_C05

**ORIGINAL OR SUBSEQUENT SURVEY EVIDENCE FOUND:** Include, search area or areas, search procedure, etc.

Date of Field work/Search: 09/02/2022 By: JG & HJ Monument Found: Rebar in Concrete BTs or Reference Objects Found: Found Witnesses B, C & D Project #: Washington Monuments Field Book: 55/04 Equipment: The basis of bearings is Grid North System NAD83(2011)/Indiana West NAVD 88, Epoch 2010.0000, geoid12b\_conus.db3, US Survey Feet, derived from GPS observations utilizing the Indiana Real-Time Network (INCORS). Coordinate data was collected with a Javad Triumph LS Network Rover. Coordinates are available upon request. Distances to witness ties were collected with a 100' measuring tape. Bearings to witness ties were collected with the internal magnetic compass of the Javad Triumph LS and were automatically adjusted to grid north and are approximately shown hereon for reference. Priority should be given to provided distances over bearings. Notes: All witness photos on file in the Monroe County Surveyors Office.

**OTHER EVIDENCE:** Describe corner location relative to nearby features and how to reach the corner location – note fences, roads, timber cutting lines, mow lines, clearings, plantings, streams, topo changes, etc.

MCSO found the best access point was from the drive for 2275 W Burma Road. Approximately ¼ mile down the drive there is an agricultural field on the west. At northwest corner of the field, one could traverse westerly on foot and locate intersecting fences and witnesses.

**MONUMENT PRESERVATION:** Describe work done to preserve existing monument.

Geodetic Controls were collected. A new witness was established. Integrity of concrete base was tested.

**THEORY OF LOCATION:** Describe the theory of location for acceptance of this monument. Include monument origin and associated uncertainty.

The rebar in concrete base was previously witnessed by the Monroe County Surveyor, Kevin Enright, on May 10, 2000 and accepted by the Monroe County Surveyor Review Board on December 14, 2000. The 2000 Monument Record accepted the rebar per a boundary survey by Ben Bledsoe, 3.472 Acre Survey (1994), recorded as Instrument Number 419007.IN. Reference on File: Survey by Eric S. Williams, Original Survey - New 2.365 acre Tract MCCrewIN, LLC to Prince (2022), on file at the Recorder's Office as 2022008003.IN. Historic research has not yet been performed to prove the validity of this monument.

**CERTIFICATION:**

MCSR\_B\_Packet

**OFFICE OF THE MONROE COUNTY SURVEYOR • Trohn Enright-Randolph**

119 W 7th Street, Bloomington, IN 47404 • 812-349-2570 • surveyorsoffice@co.monroe.in.us

3/21/2023

Page 2 of 2

Page 27

**MONUMENT RECORD**  
**State of Indiana - County of Monroe**

**Section: 06    Township: 10 N    Range: 1 W**

**Corner ID: Wash C-05**

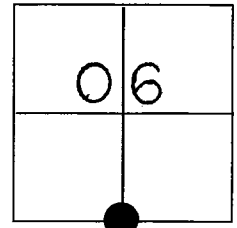
**Monument Description & Remarks:** Found: 5/8" rebar set in a concrete base 9" diameter and extending to a 3 1/2" height, painted old orange paint and many layers of flagging.

**References On File:** Bledsoe Tapp Book 3 p. 257-260.

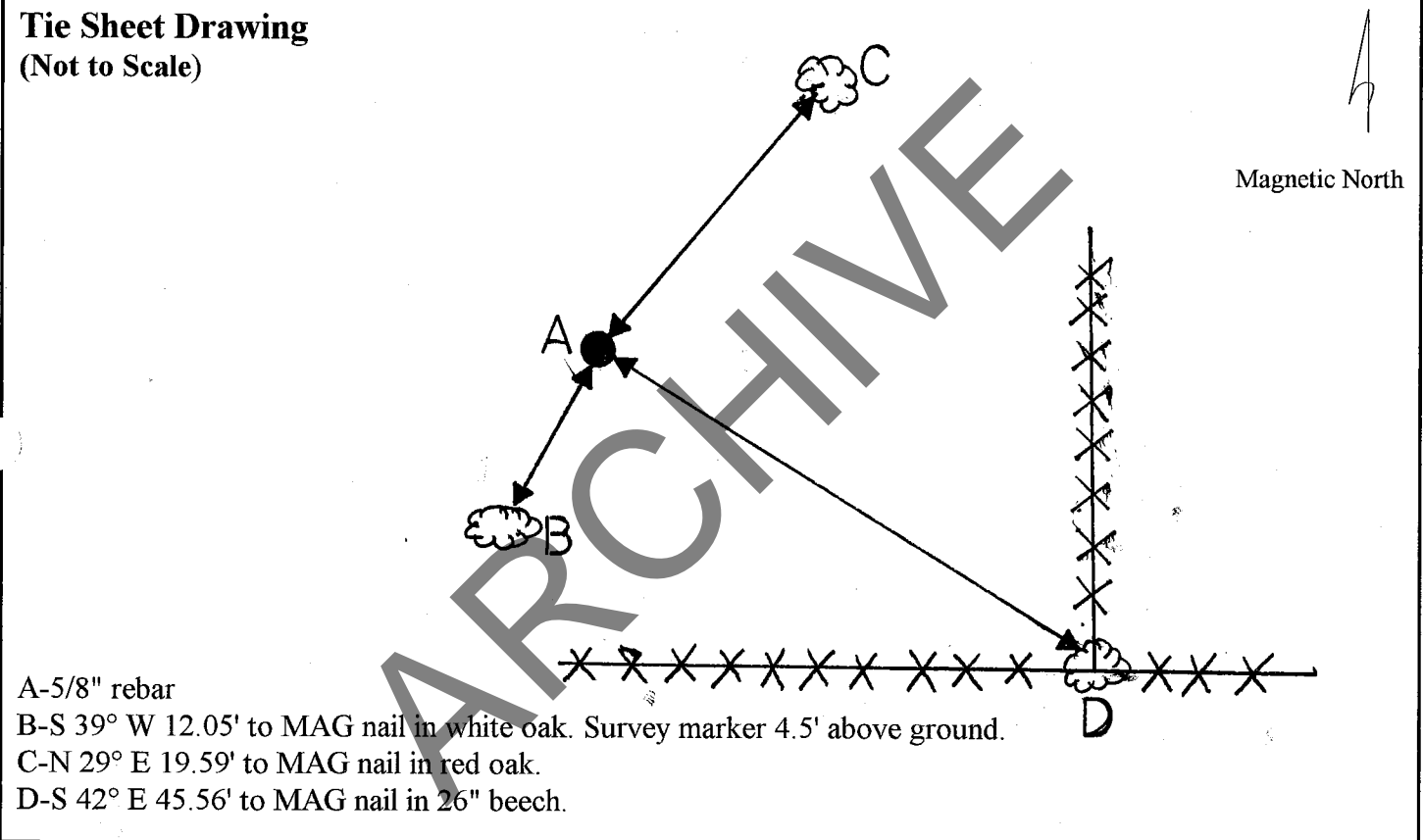
**Field Book: 2000-01**

**Page No.: 45**

**USGS Quad: Modesto**



**Tie Sheet Drawing**  
(Not to Scale)



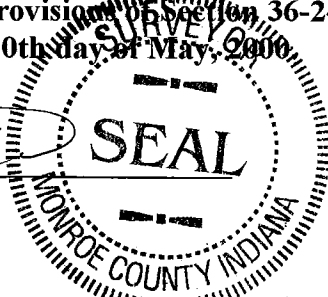
A-5/8" rebar

B-S 39° W 12.05' to MAG nail in white oak. Survey marker 4.5' above ground.

C-N 29° E 19.59' to MAG nail in red oak.

D-S 42° E 45.56' to MAG nail in 26" beech.

I, Kevin P. Enright, Monroe County Surveyor, hereby certify that this document was prepared under my direction in accordance with the provisions of Section 36-2-12-11 of the Indiana Code; and the above data is given under my hand this 10th day of May, 2000.



Certified and sealed by the Monroe County Surveyor Review Board

Date: December 14, 2000

October 13, 2000

**PENDING****MONUMENT RECORD**Corner ID: **Wash\_E19****¼ Corner****Sections 29 & 30-T10N-R01W, 2<sup>nd</sup> P.M.  
Washington Township, Monroe County**

Section 30	Section 29
10N-R01W	10N-R01W
Washington	Washington

**MONUMENT:** Describe monument set or found (Include material type, scribing, distance above/below grade, dimensions.)  
 Found 0.85' x 0.5' Sandstone with cut "X". Retraced cut for clarity 0.65 above grade.

**MONUMENT LOCATION SKETCH:****WITNESS MONUMENT TIES**

All ties to new Bearing Trees (BTs) are a mag nail set in a 1-1/2" plastic washer stamped "SURVEY MARKER - DO NOT REMOVE" and hack mark at the root crown (less than 12" above ground) perpendicular to the center of the tree, unless otherwise noted. BT diameters are noted as dbh and are measured approximately 4.5' above ground. Bearings are measured from the monument to the center of the BT, distances are measured from the monument to the mag nail.

ID	BEARING	DISTANCE	DESCRIPTION
Witness A	S 7d W	33.0'	Mag nail and washer set in hack 0.7' above grade on the southeast side of 19" American Beech Tree.
Witness B	N 71d E	37.0'	Found 20" Sugar Maple as per 2000 monument record. Distance and bearings to center of southwest side 4.5' above grade.
Witness C	S 49d E	30.2'	Found magnetic signal 0.6' above grade on north side of 22" Sassafras Tree as per 2000 monument record.
Witness D	S 47d W	12.4'	Found 19" Sugar Maple as per 2000 monument record. Distance and bearings to center of northeast side 4.5' above grade

**OFFICE OF THE MONROE COUNTY SURVEYOR • Trohn Enright-Randolph**

119 W 7th Street, Bloomington, IN 47404 • 812-349-2570 • surveyoroffice@co.monroe.in.us



**PENDING****MONUMENT RECORD**Corner ID: **Wash\_E19****¼ Corner**

**Sections 29 & 30-T10N-R01W, 2<sup>nd</sup> P.M.  
Washington Township, Monroe County**

Section 30	Section 29
10N-R01W	10N-R01W
Washington	Washington

**PHOTO IDENTIFIED:** Photo Date: 5/19/2022

Photo Orientation &amp; Description: Wash\_E19 from above



Photo Orientation &amp; Description: Wash\_E19 and survey sign from southwest.

**ORIGINAL OR SUBSEQUENT SURVEY EVIDENCE FOUND:** Include, search area or areas, search procedure, etc.

Date of Field work/Search: 5/11/2022 & 5/19/2022 By: JG & HJ Monument Found: Sandstone with "x" BTs or Reference Objects Found: Found all witnesses from 2000 monument record. Project #: Washington Monuments Field Book: 54/57 Equipment: Coordinate data was collected with a Javad Triumph LS Network Rover and a Javad Triumph 2 Base. The basis of bearings is Grid North NAD83(2011), Indiana West Zone, Epoch 2010.0000, Geoid Model G2012BU7, Datum NAD83\_NO\_TRANS, US Survey Feet, derived from GPS observations utilizing the Indiana Real-Time Network (INCORS) Distances were obtained a 100' measuring tape. Bearing to witness ties were collected with the internal magnetic compass of the Javad Triumph LS and were automatically adjusted to grid north and are approximately shown hereon for reference. Priority should be given to distances over bearings. Notes: All witness photos on file in the Monroe County Surveyors Office.

**OTHER EVIDENCE:** Describe corner location relative to nearby features and how to reach the corner location – note fences, roads, timber cutting lines, mow lines, clearings, plantings, streams, topo changes, etc.

Approximately .25 miles from Bottom Road, a "Protect Nearby Survey Marker" sign can be seen from Williams Road, when looking west and down in an area of declining elevation. From this point proceed into the woods northwesterly.

**MONUMENT PRESERVATION:** Describe work done to preserve existing monument.

"Protect Nearby Survey Marker" sign was removed from wires and refastened with conduits, 5' above grade, north and adjacent from monument. Stone was tested for acidity. "X" was retraced for clarity. Stone was painted orange. Geodetic controls for the monument were collected.

**THEORY OF LOCATION:** Describe the theory of location for acceptance of this monument. Include monument origin and associated uncertainty.

The stone was previously witnessed by the Monroe County Surveyor, Kevin Enright, on March 17, 2000 and accepted by the Monroe County Surveyor Review Board on November 02, 2000. The 2000 Monument Record accepted the stone per reports by surveyor Mike Mundy and several references in the old legal survey books. The 2000 monument record describing the monument as sandstone contradicts a Michael Sheppard survey, ALTA/ACSM Land Title Survey 477.8 Acres (2007), on file at the Recorder's Office as 2007012507.IN. The Sheppard survey describes the stone as limestone. The descriptions match in every other way. In 2022, the MCSO tested the stone with acid and determined it was sandstone. Other References on File: Vincent J. Barr survey, Route Survey for North Maple Grove Road (2015), on file at the Recorder's Office as 2015016926.IN. Historic research has not yet been performed to prove the validity of this monument.

**CERTIFICATION:**

**MONUMENT RECORD**  
**State of Indiana - County of Monroe**

**Section: 30    Township: 10 N    Range: 1 W**

**Corner ID: Wash E-19**

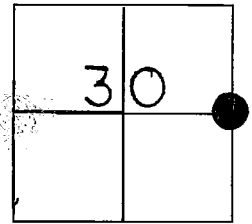
**Monument Description & Remarks:** sandstone (.32 height x .85 length x .50 width) with "+" survey stake and pink flagging.

**References On File:** Reported as section corner by Mike Mundy and several references in old legal survey books.

**Field Book: 2000-01**

**Page No.: 30**

**USGS Quad: Modesto**

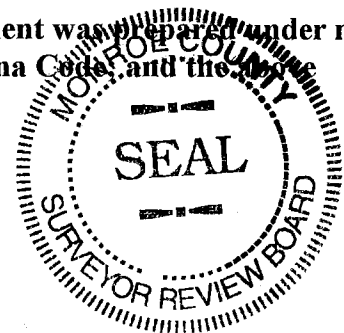
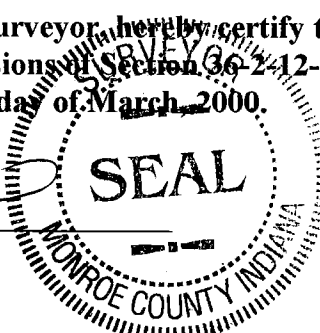


**Tie Sheet Drawing**  
(Not to Scale)

Magnetic North

A-sandstone with "+" S.M. 4' A.G.  
B-N 75° E 37' to MAG nail in 18" sugar maple.  
C-S 49° E 30.68' to MAG nail in 15" sassafras.  
D-S 41° W 12.40' to MAG nail in 17" sugar maple.

I, Kevin P. Enright, Monroe County Surveyor, hereby certify that this document was prepared under my direction in accordance with the provisions of Section 36-2-12-11 of the Indiana Code, and the data is given under my hand this 17th day of March, 2000.

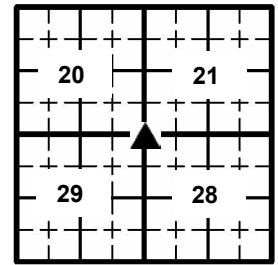


**Certified and sealed by the Monroe County Surveyor Review Board**

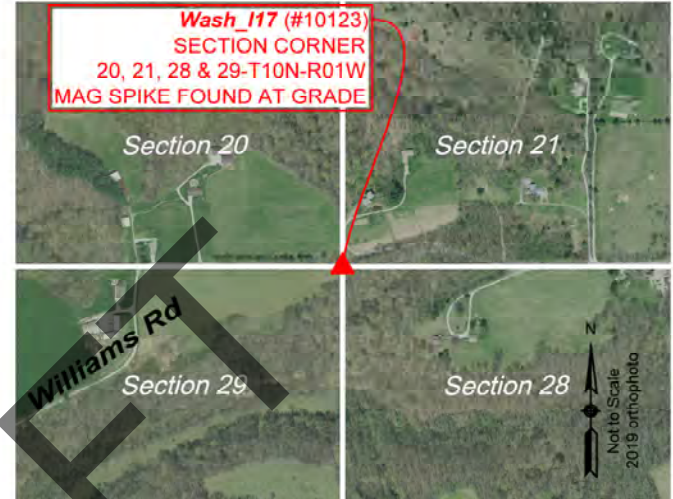
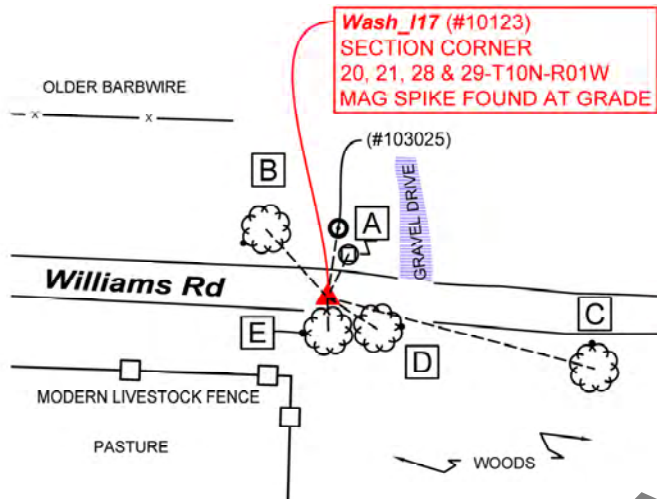
**Date:** 11/02/00

**PENDING****MONUMENT RECORD**Corner ID: **Wash\_I17****Section Corner**

Sections 20, 21, 28 & 29- T10N-R01W, 2nd P.M.  
Washington Township, Monroe County, Indiana



**MONUMENT:** Describe monument set or found (Include material type, scribing, distance above/below grade, dimensions.)  
Found Mag Spike at grade 1.5' south of center of West Williams Rd.

**MONUMENT LOCATION SKETCH:****WITNESS MONUMENT TIES**

All ties to new Bearing Trees (BTs) are a mag nail set in a 1-1/2" plastic washer stamped "SURVEY MARKER - DO NOT REMOVE" and hack mark at the root crown (less than 12" above ground) perpendicular to the center of the tree, unless otherwise noted. BT diameters are noted as dbh and are measured approximately 4.5' above ground. Bearings are measured from the monument to the center of the BT, distances are measured from the monument to the mag nail.

ID	BEARING	DISTANCE	DESCRIPTION
Witness A	N 26d E	15.1'	Top center of a Cable Box 2.3' above grade
Witness B	N 42d W	29.0'	Mag nail found 0.6' above grade on the east side of a 24" Sugar Maple Tree as per 2009 monument record.
Witness C	S 75d E	87.2'	Mag nail signal found on the north side of a 32" Yellow Poplar Tree as per 2009 monument record.
Witness D	S 39d E	14.9'	Mag nail found 0.4' on the east side of a 22" Sugar Maple Tree as per 2009 monument record.
Witness E	S 32d E	12.3'	Mag nail found 0.4' above grade on the south side of 19" trifurcated Sugar Maple Tree.

**MONUMENT ACCESSORIES**

Other survey grade monuments that were located in the vicinity and their relation to the monument.

(#103025)	N 8d37'4" E	22.37'	1 1/4 " pinched pipe found 0.4' above grade.
-----------	-------------	--------	--



**OFFICE OF THE MONROE COUNTY SURVEYOR • Trohn Enright-Randolph**

119 W 7th Street, Bloomington, IN 47404 • 812-349-2570 • surveyoroffice@co.monroe.in.us



**PENDING****MONUMENT RECORD**Corner ID: **Wash\_I17****Section Corner**

Sections 20, 21, 28 & 29- T10N-R01W, 2nd P.M.  
Washington Township, Monroe County, Indiana

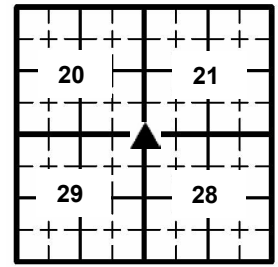
**PHOTO IDENTIFIED:** Photo Date: 04/21/2022

Photo Orientation &amp; Description: Looking at Wash\_I17 from above



Photo Orientation &amp; Description: Looking north at Wash\_I17



Photo Orientation &amp; Description: Looking west at Wash\_I17



Photo Orientation &amp; Description: Looking east at Wash\_I17

**ORIGINAL OR SUBSEQUENT SURVEY EVIDENCE FOUND:** Include, search area or areas, search procedure, etc.

Date of Field work/Search: 04/20/2022 & 04/22/2022 By: JG & HJ Monument Found: Mag Spike BTs or Reference Objects Found: Found Witnesses B, C, D & E from February 27, 2009 Monument Record Project #: Washington Monuments Field Book: 54/54 Equipment: The basis of bearings is Grid North System NAD83(2011)/Indiana West NAVD 88, Epoch 2010.0000, geoid12b\_conus.db3, US Survey Feet, derived from GPS observations utilizing the Indiana Real-Time Network (INCORS). Coordinate data was collected with a Javad Triumph LS Network Rover. Coordinates are available upon request. Distances to witness ties were collected with a Leica Disto laser distance meter and 100' measuring tape. Bearings to witness ties were collected with the internal magnetic compass of the Javad Triumph LS and were automatically adjusted to grid north and are approximately shown hereon for reference. Priority should be given to provided distances over bearings. Notes: All witness photos on file in the Monroe County Surveyors Office.

**OTHER EVIDENCE:** Describe corner location relative to nearby features and how to reach the corner location – note fences, roads, timber cutting lines, mow lines, clearings, plantings, streams, topo changes, etc.

Monument is 1.5' south of the centerline of Williams Road, 12' west of a gravel drive on the north side and a half mile west with Williams Road's intersection with Simpson Chapel Road.





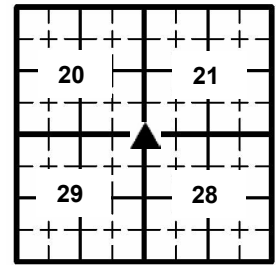


## MONUMENT RECORD

Corner ID: **Wash\_I17**

### Section Corner

Sections 20, 21, 28 & 29- T10N-R01W, 2nd P.M.  
Washington Township, Monroe County, Indiana



**MONUMENT PRESERVATION:** *Describe work done to preserve existing monument.*

Geodetic controls were captured for the monument along with a new witness (pinched iron pipe). A second new witness was established (Witness A). Stability of sign "Protect Nearby Survey Markers" sign was assured.

**THEORY OF LOCATION:** *Describe the theory of location for acceptance of this monument. Include monument origin and associated uncertainty.*

The Mag Spike was set by the Monroe County Surveyor, Kevin Enright, on February 27, 2009 and accepted by the Monroe County Surveyor Review Board on March 10, 2009. Before that, the monument was represented by 1/2" rebar and witnessed by Monroe County Surveyor, Michael W. Friley, on October 8, 1993. Before that, the rebar was witnessed by Monroe County Surveyor, Edmund O. Farkas, on April 29, 1987. At the time, Mr. Farkas found the rebar bent and pulled from the ground. The Monroe County Surveyor straightened the rebar and reset it. Before that, the rebar was set by Monroe County Surveyor, Edmund O. Farkas, on April 14, 1982.

Mr. Enright set the 3" Mag Spike after finding the magnetic signal for the 1/2" Rebar under the asphalt and verifying its position using Witness C per his 2009 notes. References on File: Tracy L. McGill survey, Location Control Route Survey Plat Proposed I-69 Section 5, Segment 4 Connaught Road to Morgan County Line (2013) on file at the Recorder's Office as 2013015455.IN and Michael E. Sheppard survey, Plat of Survey of the Lands of Raymond Saidah in the East half of Section 28 (2011) on file at the Recorder's Office as 2011014851.IN and finally a survey performed by Eric L. Deckard, Walls -Sliding Scale Subdivision Final Plat (2021), on file at the Recorder's Office as 2021000685.IN. Historic research has not yet been performed to prove the validity of this monument.

**CERTIFICATION:**

DRAFT



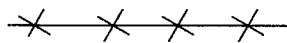
**MONUMENT RECORD**  
State of Indiana - County of Monroe

**Section: 21****Township: 10 North****Range: 1 West****Corner ID: Wash I-17**

**Monument Description & Remarks:** 3" MAG Spike set over 1/2" Rebar buried under black asphalt. Survey Sign 4.5ft above ground at pt. E

**References On File:** Edmund O. Farkas recovery tie drawing, Monument Record (1987) and Michael W. Friley recovery tie drawing, Monument Record (1993) on file in Surveyor Office

RECOVERY TIE DRAWING  
Field Book 42 Page No. 20



- A** - 3" MAG Spike set  
**B** - N 42° W 28.90' to MAG nail in 22" Sugar Maple  
**C** - S 75° E 87.20' to PK nail in 32" Yellow Poplar  
**D** - S 39° E 14.90' to MAG nail in 20" Sugar Maple  
**E** - S 32° E 12.73' to Survey Sign on 16" Sugar Maple

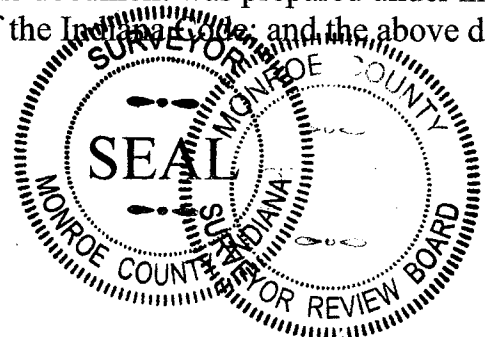
Not To Scale  
Compass Bearing Magnetic North



ARCHIVE

I, Kevin P. Enright, Monroe County Surveyor, hereby certify that this document was prepared under my direction in accordance with the provisions of section 36-2-12-11 of the Indiana Code; and the above data is given under my hand and seal this 27th day of February, 2009.

*Kevin P. Enright*



Administered by the Monroe County Surveyor Review Board

Date: 3-10-2009  
MCSR\_B\_Packet

## MONUMENT RECORD

Corner P.D. 36 #

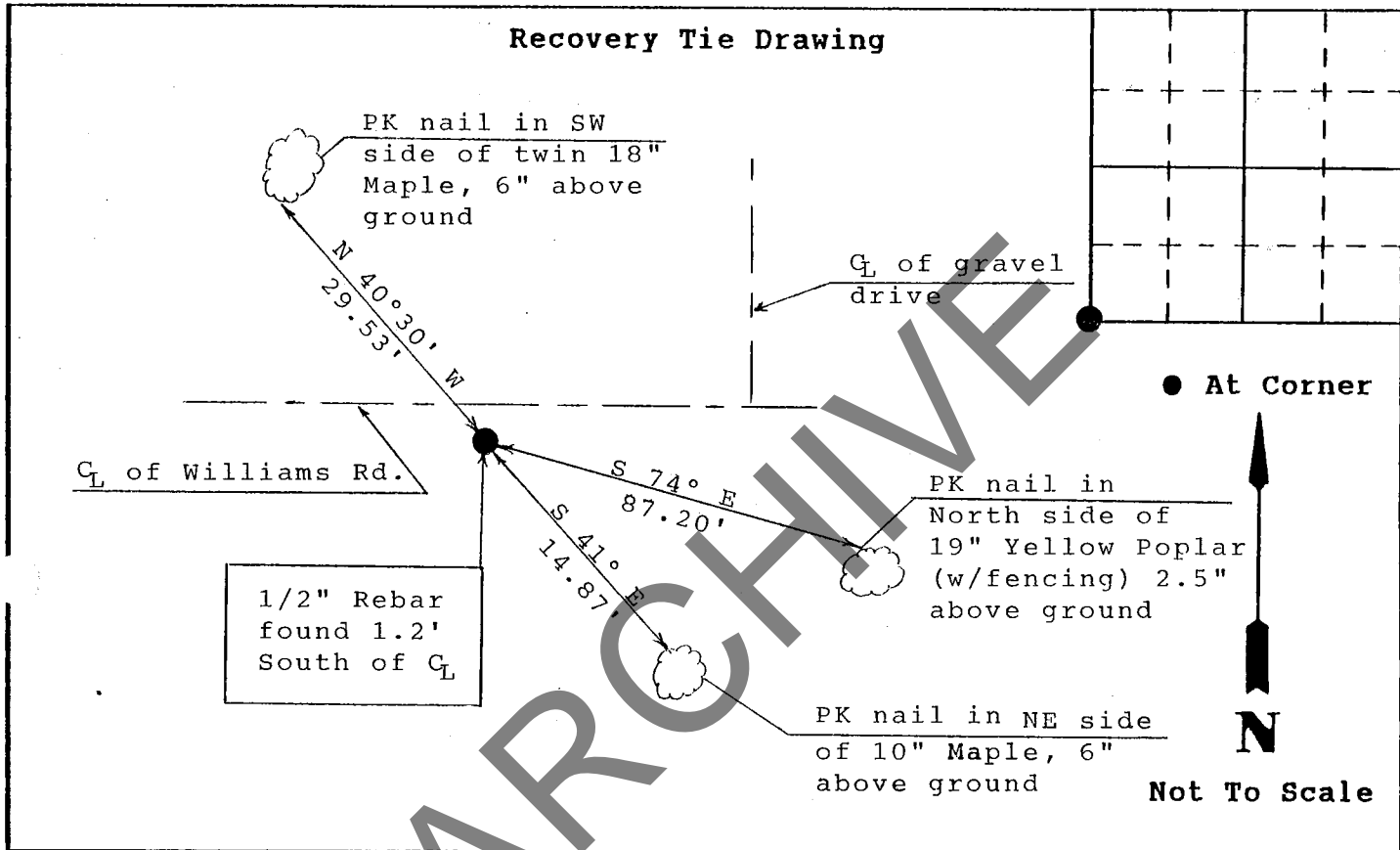
I-17

## STATE OF INDIANA - COUNTY OF MONROE

Section Twenty-one, 21, Township 10 North, Range 1 West

Monument Description & Remarks: Found 1/2" Rebar at SW Corner of Section,  
with flagging, 5" under surface, 1.2' South of centerline of Williams Rd.

## Recovery Tie Drawing



State of Indiana  
 County of Monroe

Space  
 Reserved For  
 Recording  
 Officer

I, Michael W. Friley, hereby certify  
 that this document was prepared under my direction in  
 accordance with the provisions of Section 17-3-64-4  
 through 17-3-64-8 of the Indiana Code, being Acts of 1965,  
 Chapter 319; and the above data is given under my hand and  
 seal this 8th day of October, 1993 A.D.

Indiana Registered Land Surveyor No. \_\_\_\_\_ or

Monroe County Surveyor's Office

United States Government Agency

Monroe County Surveyor

Title \_\_\_\_\_

Field Book:

93-01

Page:

16

CORNER I.D.

I - 17

## MONUMENT RECORD

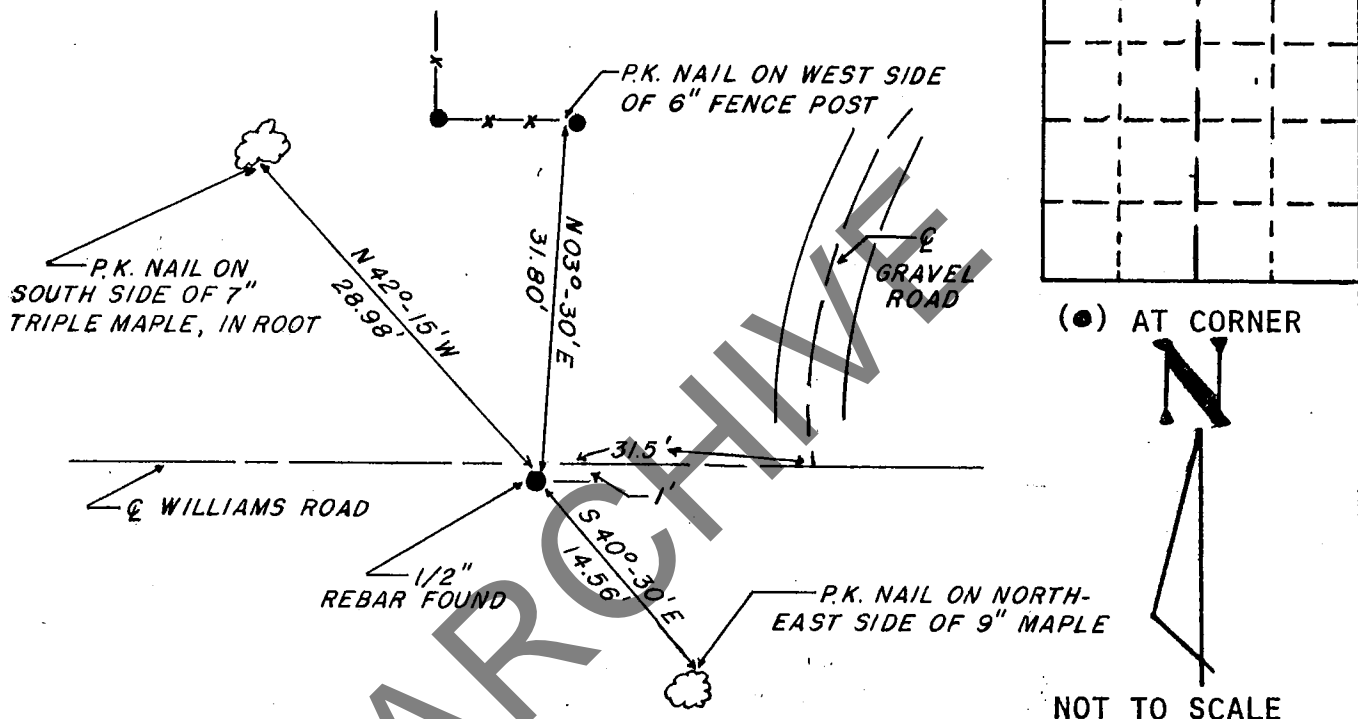
STATE OF INDIANA - COUNTY OF MONROE

SECTION 29, TOWNSHIP 10 NORTH, RANGE 1 WEST

## MONUMENT DESCRIPTION &amp; REMARKS

NEW CORNER TIES ESTABLISHED 4/29/87 . . . FOUND 1/2" REBAR1' SOUTH OF THE CENTERLINE OF WILLIAMS ROAD. REBAR WASBENT - PULLED OUT OF GROUND, STRAIGHTENED, AND PUT BACK IN.

## RECOVERY TIE DRAWING



STATE OF INDIANA

COUNTY OF MONROE

I, EDMUND O. FARKAS HEREBY CERTIFY THAT THIS DOCUMENT WAS PREPARED UNDER MY DIRECTION IN ACCORDANCE WITH THE PROVISIONS OF SECTION 17-3-64-4 - 17-3-64-8 OF THE INDIANA CODE, BEING ACTS OF 1965, CHAPTER 319; AND THE ABOVE DATA IS GIVEN UNDER MY HAND AND SEAL THIS 29TH DAY OF APRIL, 19 87 A.D.

SPACE  
RESERVED  
FOR  
RECORDING  
OFFICER.

INDIANA REGISTERED LAND SURVEYOR NO. \_\_\_\_\_

OR \_\_\_\_\_

UNITED STATES GOVERNMENT AGENCY

TOWNSHIP;  
WASHINGTON

CORNER I.D.



## MONUMENT RECORD

I - 17

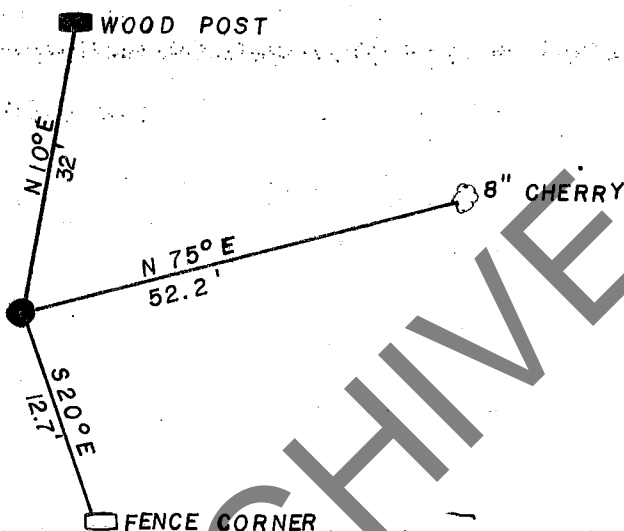
STATE OF INDIANA - COUNTY OF MONROE

SECTION 29, TOWNSHIP 10 North, RANGE 1 West

## MONUMENT DESCRIPTION &amp; REMARKS

Rebar Set.

## RECOVERY TIE DRAWING



(●) AT CORNER



NOT TO SCALE

STATE OF INDIANA

COUNTY OF Monroe

I, Edmund O. Farkas HEREBY CERTIFY THAT THIS DOCUMENT WAS PREPARED UNDER MY DIRECTION IN ACCORDANCE WITH THE PROVISIONS OF SECTION 17-3-64-4 - 17-3-64-8 OF THE INDIANA CODE, BEING ACTS OF 1965, CHAPTER 319; AND THE ABOVE DATA IS GIVEN UNDER MY HAND AND SEAL THIS 14 DAY OF April, 19 82 A.D.

SPACE  
RESERVED  
FOR  
RECORDING  
OFFICER.INDIANA REGISTERED LAND SURVEYOR NO. SO114

OR

UNITED STATES GOVERNMENT AGENCY

TOWNSHIP:  
Washington

CORNER I.D.

I - 17

**PENDING**

## MONUMENT RECORD

Corner ID: **Wash\_M15**

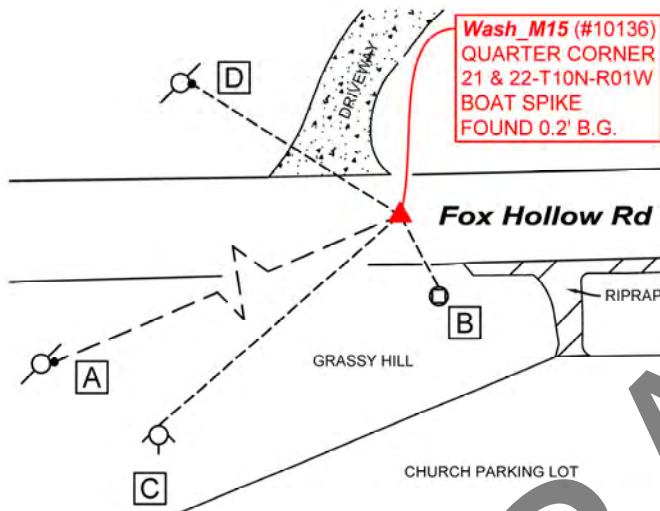
## Quarter Corner

Sections 21 & 22- T10N-R01W, 2nd P.M.  
Washington Township, Monroe County, Indiana

Section 21      Section 22  
T10N-R01W    T10N-R01W  
*Washington*    *Washington*

**MONUMENT:** *Describe monument set or found (Include material type, scribing, distance above/below grade, dimensions.)*  
Found Boat Spike 0.2' below grade approximately 1' north of centerline of Fox Hollow Road.

**MONUMENT LOCATION SKETCH:**



## WITNESS MONUMENT TIES

All ties to new Bearing Trees (BTs) are a mag nail set in a 1-1/2" plastic washer stamped "SURVEY MARKER - DO NOT REMOVE" and hack mark at the root crown (less than 12" above ground) perpendicular to the center of the tree, unless otherwise noted. BT diameters are noted as dbh and are measured approximately 4.5' above ground. Bearings are measured from the monument to the center of the BT, distances are measured from the monument to the mag nail.

<i>ID</i>	<i>BEARING</i>	<i>DISTANCE</i>	<i>DESCRIPTION</i>
Witness A	S 67d W	183.0'	Mag nail and washer set 0.5' above grade on the east side of a 13" Power Line Pole.
Witness B	S 14d E	17.5'	Found 35 M.P.H. sign post measured to center point 5' above grade as per 2004 monument record.
Witness C	S 44d W	70.1'	Found Fire Hydrant measured to a point on center peak north side as per 2004 monument record.
Witness D	N 59d W	56.0'	Mag nail and washer set 0.5' above grade on the east side of a 13" Power Line Pole.



OFFICE OF THE MONROE COUNTY SURVEYOR • Trohn Enright-Randolph

119 W 7th Street, Bloomington, IN 47404 • 812-349-2570 • [surveyorsoffice@co.monroe.in.us](mailto:surveyorsoffice@co.monroe.in.us)

MCSRB Packet

3/21/2023

Page 1 of 3

Page 39

**PENDING**

## MONUMENT RECORD

Corner ID: **Wash\_M15**

## Quarter Corner

Sections 21 & 22- T10N-R01W, 2nd P.M.  
Washington Township, Monroe County, Indiana

Diagram illustrating the layout of the 100' x 100' lot, divided into two 50' x 100' sections:

- Section 21 (Left):** Labeled "Section 21", "T10N-R01W", and "Washington".
- Section 22 (Right):** Labeled "Section 22", "T10N-R01W", and "Washington".

**PHOTO IDENTIFIED:** *Photo Date: 06/29/2022*



*Photo Orientation & Description:* Wash\_M15 from above



*Photo Orientation & Description:* Looking west at Wash\_M15

**ORIGINAL OR SUBSEQUENT SURVEY EVIDENCE FOUND:** *Include, search area or areas, search procedure, etc.*

*Date of Field work/Search:* 06/29/2022 *By:* JG & HJ *Monument Found:* Boat Spike *BTs or Reference Objects Found:* Found Witnesses B & C from 2004 monument record. New power line poles were placed in representation of Witness D *Project #:* Washington Monuments *Field Book:* 54/68 *Equipment:* The basis of bearings is Grid North System NAD83(2011)/Indiana West NAVD 88, Epoch 2010.0000, geoid12b\_conus.db3, US Survey Feet, derived from GPS observations utilizing the Indiana Real-Time Network (INCORS). Coordinate data was collected with a Javad Triumph LS Network Rover. Coordinates are available upon request. Distances to witness ties were collected with a Leica Disto laser distance meter and a 100' measuring tape. Bearings to witness ties were collected with the internal magnetic compass of the Javad Triumph LS and were automatically adjusted to grid north and are approximately shown hereon for reference. Priority should be given to provided distances over bearings. *Notes:* All witness photos on file in the Monroe County Surveyors Office.

**OTHER EVIDENCE:** Describe corner location relative to nearby features and how to reach the corner location – note fences, roads, timber cutting lines, mow lines, clearings, plantings, streams, topo changes, etc.

Wash\_M15 was found approximately 1' north of the centerline of Fox Hollow Road. Its excavation site can be spotted from the eastern entry for residential drive of 8480 N Fox Hollow Road. On the south side of the street sits the United Pentecostal Assembly Family Life Worship Center.

**MONUMENT PRESERVATION:** *Describe work done to preserve existing monument.*

Geodetic controls were captured for the monument. Two new witnesses were established.

**THEORY OF LOCATION:** *Describe the theory of location for acceptance of this monument. Include monument origin and associated uncertainty.*

The boat spike was previously witnessed by the Monroe County Surveyor, Steven V. Farkas, on December 27, 2004 using work conducted by Licensed Surveyor, Ben E. Bledsoe (LSS0559). Prior to that, the boat spike was set by Monroe County Surveyor, Michael Friley, on October 8, 1993 in order to replace a nail in bottle cap. At the time Bledsoe Tapp Co. verified that the nail in bottle cap was the monument held for this corner. References of File: Ben E. Bledsoe survey referencing nail in bottle cap, Boundary Survey for Yocum (1992), on file at the Recorder's Office as 00304246. Tracy L. McGill Survey, Location Control Route Survey Plat Proposed I-69 Section 5, Segment 4 Connaught Road to Morgan County Line (2013), on file at the Recorder's Office as 2013015455.IN. Christopher L. Porter survey, Retracement Boundary for April Ayers (2019), on file at the Recorder's Office as 2021022117.IN. Historic research has not yet been performed to prove the validity of this monument.



MCSR B Packet

OFFICE OF THE MONROE COUNTY SURVEYOR • Trohn Enright-Randolph

119 W 7th Street, Bloomington, IN 47404 • 812-349-2570 • [surveyoroffice@co.monroe.in.us](mailto:surveyoroffice@co.monroe.in.us)

3/21/2023

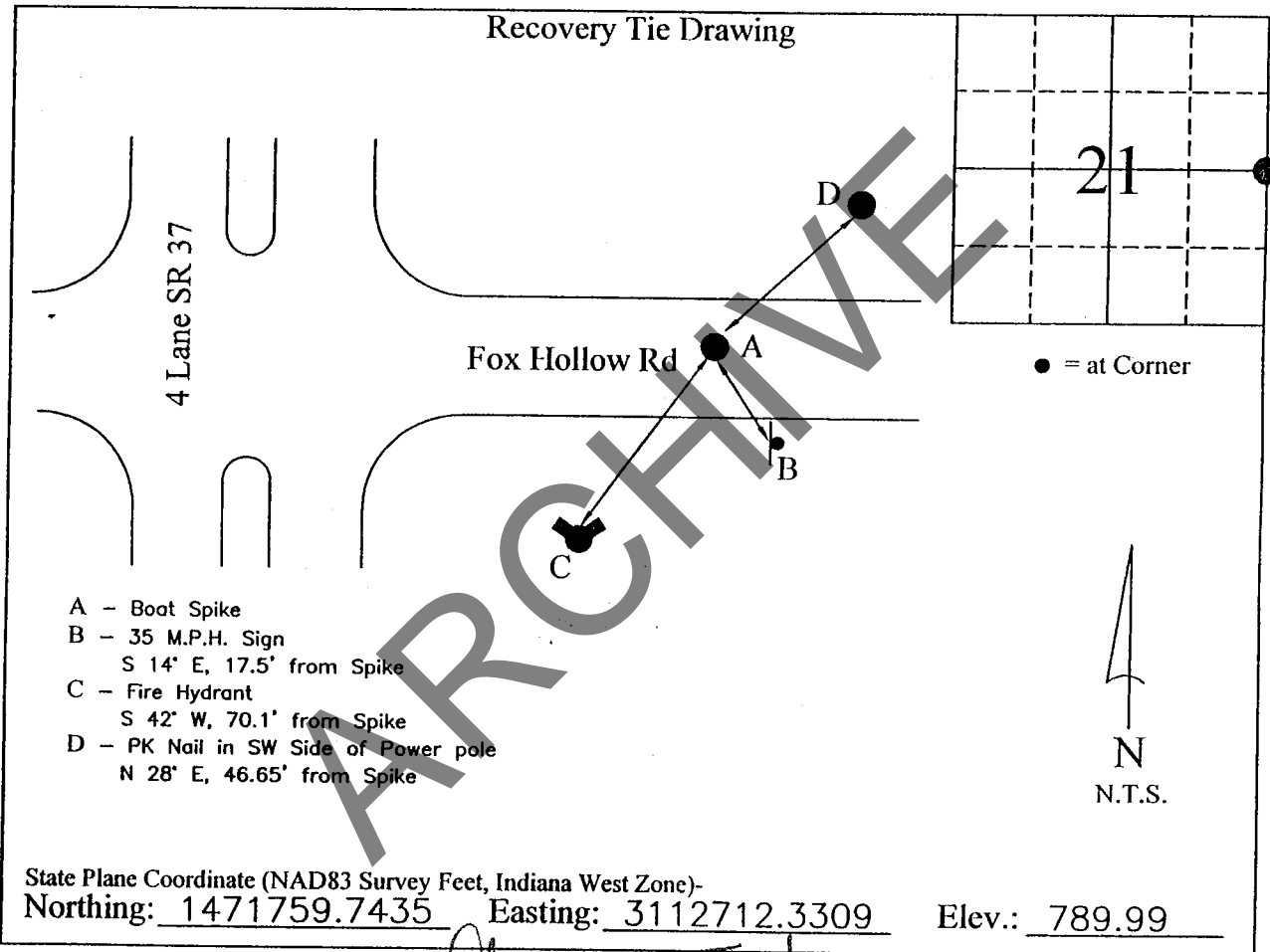
Page 2 of 3

Page 40

Corner I.D. # M-15

MONUMENT RECORD

STATE OF INDIANA ~ COUNTY OF MONROE

Section 21, Township 10 North, Range 1 West,Monument Description & Remarks: Boat Spike FlushCOMPLETED By Ben E. Bledsoe

I, Ben E. Bledsoe, Registered Land Surveyor, here by certify that this document was prepared under my direction in accordance with the provisions of Section 17-3-64-4 through 17-3-64-8 of the Indiana Code, being Acts of 1965, Chapter 319; this 27th day of December, 2004 A.D.

Indiana Registered Land Surveyor No. S0559





# MONUMENT RECORD

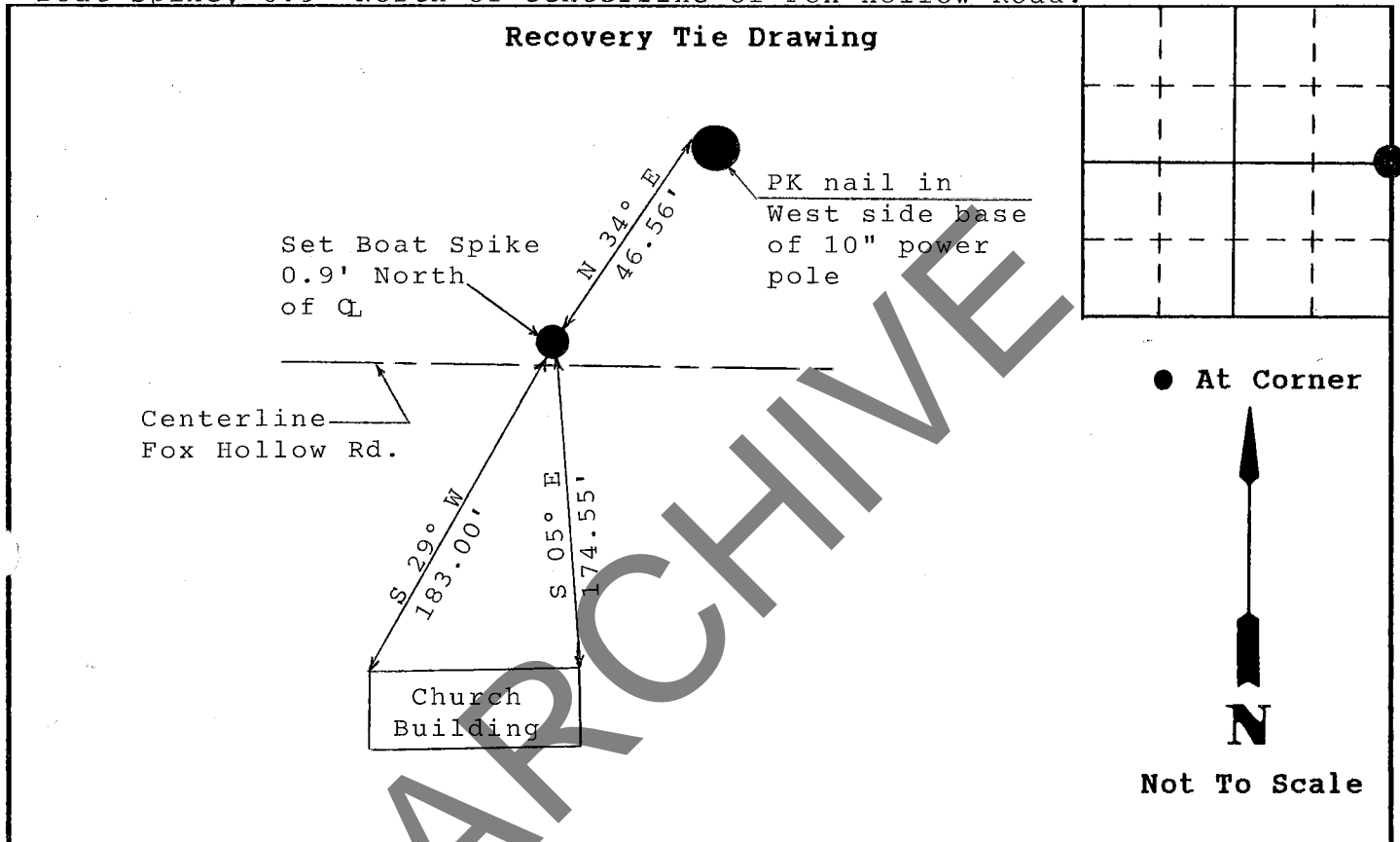
Corner I.D. #

M-15

STATE OF INDIANA - COUNTY OF MONROE

Section Twenty-one, 21, Township 10 North, Range 1 West

**Monument Description & Remarks:** East 1/4 Corner of Section - Found nail in  
bottle cap, verified by Bledsoe Tapp Co. to be corner. Replaced with  
Boat Spike, 0.9' North of centerline of Fox Hollow Road.



State of Indiana  
County of Monroe

Space  
Reserved For  
Recording  
Officer

I, Michael W. Friley, hereby certify  
 that this document was prepared under my direction in  
 accordance with the provisions of Section 17-3-64-4  
 through 17-3-64-8 of the Indiana Code, being Acts of 1965,  
 Chapter 319; and the above data is given under my hand and  
 seal this 8th day of October, 1993 A.D.

Indiana Registered Land Surveyor No. \_\_\_\_\_ or

Monroe County Surveyor's Office  
 United States Government Agency

Monroe County Surveyor  
 Title

Field Book:

93-01

Page:

14