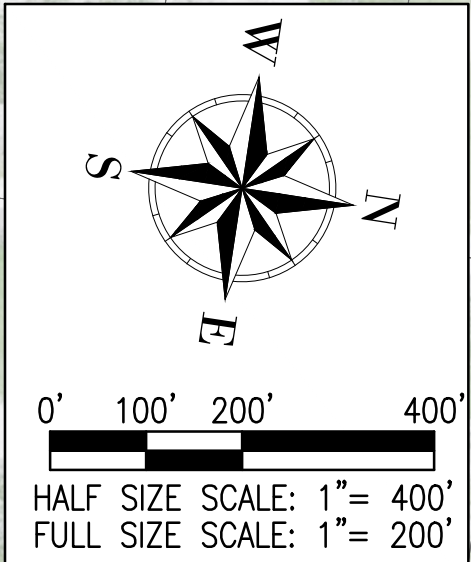
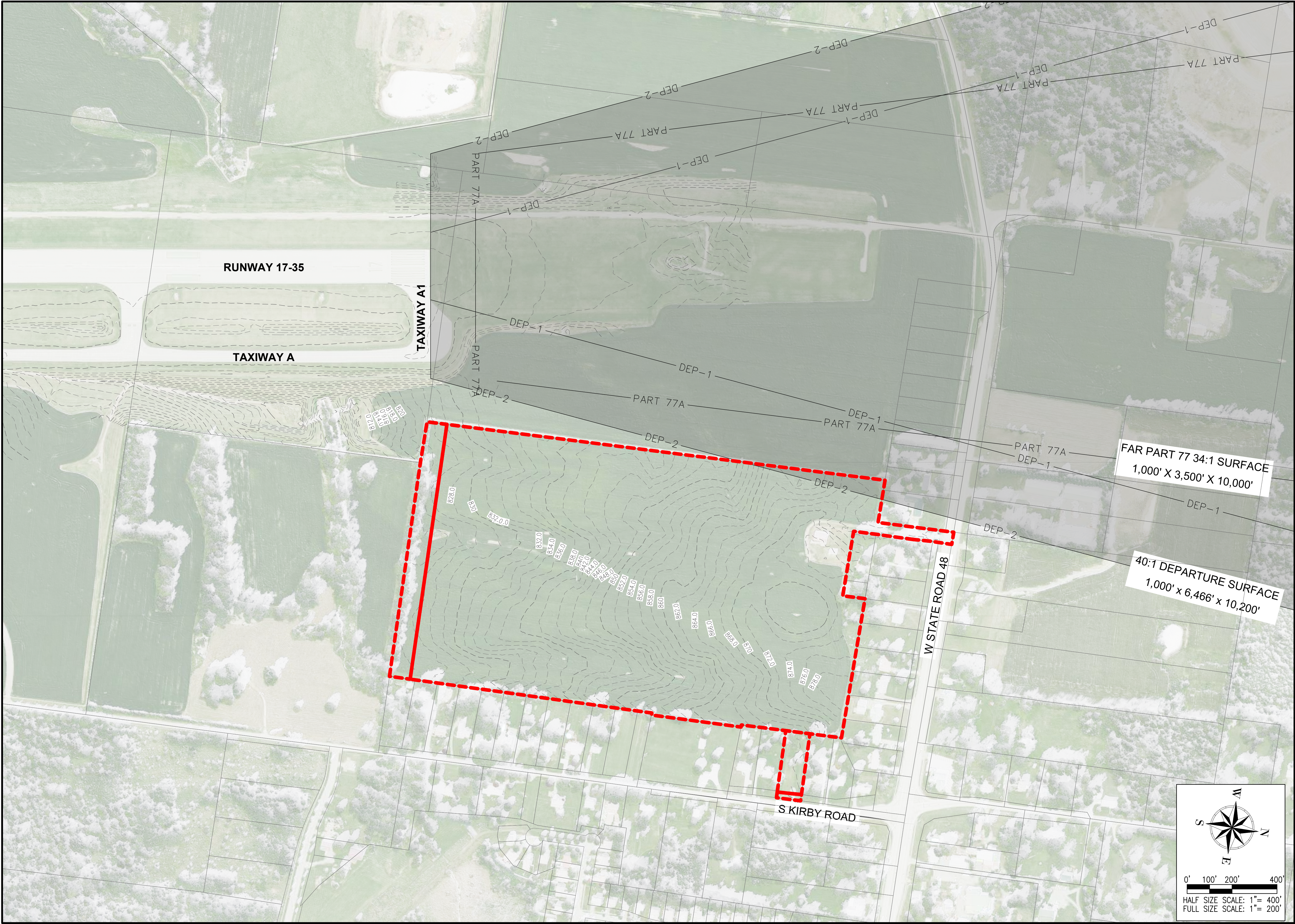


NOV 24, 2020 12:14 PM D001853
I:\18\JOBS\18A006\CAD\AIRPORT\18SHEET\EXHIBITS\NEPARCELANDSURFACE.DWG



MONROE COUNTY AIRPORT
972 SOUTH KIRBY ROAD
BLOOMINGTON, IN 47401
PHONE: (812) 825-5406

DRAFT

MONROE COUNTY AIRPORT (BGM)

PROPOSED TAXIWAY
ALTERNATIVE
ANALYSIS

NO.	DATE	DESCRIPTION			
		DES	DWN	REV	

ISSUE:
PROJECT NO: 18A0066
CAD FILE:
DESIGN BY: NLD 11/24/2020
DRAWN BY: NLD 11/24/2020
REVIEWED BY: SZ 11/24/2020

SHEET TITLE

NORTHEAST 55 ACRE
PARCEL
WITH THE APPROACH
AND DEPARTURE
SURFACES

FIGURE 2.1