



**Office of the Monroe County Surveyor**  
**Trohn Enright-Randolph**

Health Services Building  
119 West 7<sup>th</sup> Street  
Bloomington, IN 47404  
Phone: (812) 349-2570  
[surveyorsoffice@co.monroe.in.us](mailto:surveyorsoffice@co.monroe.in.us)

**AGENDA**  
**SURVEYOR REVIEW BOARD**  
**REGULAR MEETING**  
**Via Zoom App**  
**Tuesday, April 19, 2022**

- I. Call to Order**
- II. Approval of agenda**
- III. Approval of meeting minutes from February 28, 2022**
- IV. New Business**
  - a. Office Update**
- V. Certification of corners: Blm\_G01, Wash\_G25, Blm\_I01, Wash\_I25**
- VI. Public input**
- VII. Adoption of next meeting date**
- VIII. Adjournment**

Zoom Meeting Information

<https://monroecounty-in.zoom.us/j/84648553923?pwd=VmdvUGl1MFR5NzU3VmhXK1JiejZzUT09>

Meeting ID: 846 4855 3923

Password: 668366

**Dial by your location**

+1 312 626 6799 US (Chicago)

Meeting ID: 846 4855 3923

**The meeting is open to the public. Dates are subject to change.**

For additional information, please call the Office of the Monroe County Surveyor at (812) 349-2570.

Anyone who requires an auxiliary aid or service for effective communication, or a modification of policies or procedures to participate in a program, service, or activity of Monroe County, should contact Monroe County Title VI Coordinator, (812) 349-2553, as soon as possible but no later than forty-eight (48) hours before the scheduled event.

Individuals requiring special language services should, if possible, Government Title VI Coordinator at least seventy-two (72) hours prior to the date on which the services will be needed.

N:\Meetings\_Boards\_Committees\_&\_Commissions\Monroe\_County\_Surveyor\_Review\_Board\SRB2022\Packets\20220419\Individual Files\MCSRB\_Agenda\_20220419.docx

**Survey Utility**



**MINUTES**  
**SURVEYOR REVIEW BOARD**  
**SPECIAL MEETING**  
**Via Zoom App**  
**FEBRUARY 28, 2022 at 5 PM**

**MEMBERS PRESENT:** Eric Deckard, Rachel Oser

**MEMBERS ABSENT:** Todd Borgman

**STAFF:** Trohn Enright-Randolph (County Surveyor), Donna Barbrick (Secretary), Jason George (Survey Technician), Technical Services

**I. Call to Order:** Trohn Enright-Randolph called the meeting to order.

**II. Approval of agenda**

**Motion to approve by Eric Deckard; second by Rachel Oser. VOTE: Yes (unanimous).**

**Agenda approved.**

**III. Office Update**

**a. Amendment to the Surveyor Review Board Rules Of Procedure**

**b. Election of Surveyor Review Board Chair**

**c. Adoption of the Electronic Attendance Policy for Public Meetings**

Trohn said the SRB could discuss an Amendment to Rules of Procedure and electing a chair. He noted the new language in Item 2 of the rules: a chair shall be nominated and elected by the board at the first meeting of the year.

He said the reason to have the chair is so the chair has the ability to talk about having staff attend in person. He said the majority of the board members will have to attend in person and a third person could attend virtually. Deckard asked who could be considered a chair. Deckard said my preference would be adopting the electronic attendance policy. Oser said she did not understand why the chair needed to be discussed. There was a discussion of why a chair was needed.

**Motion to amend the Rules of Procedure made by Oser; second by Deckard. VOTE: Yes (unanimous). Motion carried. Oser nominated Eric Deckard to be the Surveyor Review Board chair. Seconded by Deckard. Vote: YES (unanimous).** Trohn suggested a motion to adopt the Electronic Attendance Policy for Public Meetings. **Motion by Deckard; seconded by Oser. VOTE: Yes (unanimous)**

There being no further business, the meeting adjourned at approximately 5:23 pm.

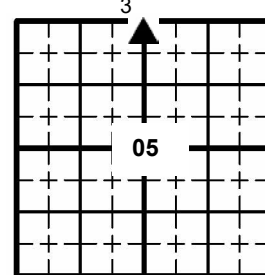
**Minutes approved:** \_\_\_\_\_

**Secretary:** \_\_\_\_\_

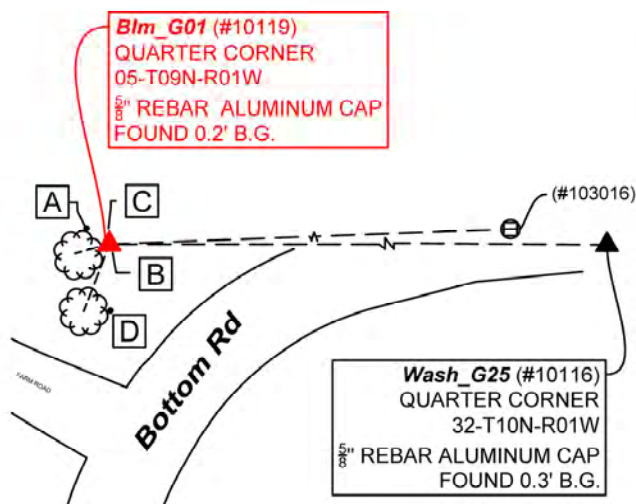
**PENDING****MONUMENT RECORD**Corner ID: **Blm\_G01****Quarter Corner**

Section 05- T09N-R01W, 2nd P.M.

Bloomington Township, Monroe County, Indiana

**MONUMENT:** Describe monument set or found (Include material type, scribing, distance above/below grade, dimensions.)

5/8" Rebar with Aluminum Cap stamped, "MICHAEL E SHEPPARD LS#20100021" found 0.2' below grade on the west side of Bottom Road.

**MONUMENT LOCATION SKETCH:****WITNESS MONUMENT TIES**

All ties to new Bearing Trees (BTs) are a mag nail set in a 1-1/2" plastic washer stamped "SURVEY MARKER - DO NOT REMOVE" and hack mark at the root crown (less than 12" above ground) perpendicular to the center of the tree, unless otherwise noted. BT diameters are noted as dbh and are measured approximately 4.5' above ground. Bearings are measured from the monument to the center of the BT, distances are measured from the monument to the mag nail.

ID	BEARING	DISTANCE	DESCRIPTION
Witness A	S 75d W	9.4'	Mag nail and washer set in hack 0.6' above grade on the northeast side of a 6" sugar maple tree.
Witness B	S 90d W	0.2'	Found remnants of Orange Survey Marker as per 2008 tie sheet.
Witness C	N 70d W	0.6'	Set "Protect Nearby Survey Markers" sign 3' above grade.
Witness D	S 21d W	19.0'	Found magnetic signal in scar 0.3' above grade on north side of 60" maple tree as per 2008 tie sheet.

**MONUMENT ACCESSORIES**

Other survey grade monuments that were located in the vicinity and their relation to the monument. Geodetic coordinates in this table are provided in the format Easting, Northing.

(#103016)	N 87d45'4" E	404.27'	Mag nail and washer set 1' above grade on east side of 6" wooden post.
(#10116)	S 89d58'56" E	517.69'	5/8" Rebar with Aluminum Cap stamped "Michael E Sheppard LS #201100021" found 0.3" below grade.

**OFFICE OF THE MONROE COUNTY SURVEYOR • Trohn Enright-Randolph**

119 W 7th Street, Bloomington, IN 47404 • 812-349-2570 • surveyoroffice@co.monroe.in.us

Page 1 of 3





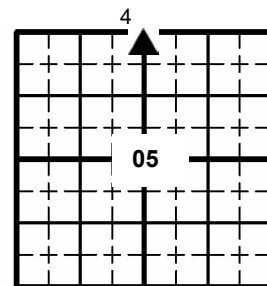
# MONUMENT RECORD

Corner ID: **Blm\_G01**

**Quarter Corner**

Section 05- T09N-R01W, 2nd P.M.

Bloomington Township, Monroe County, Indiana



**PHOTO IDENTIFIED:** Photo Date: 03/04/2022



Photo Orientation & Description: Blm\_G01 from above



Photo Orientation & Description: Looking west at Blm\_G01



Photo Orientation & Description: Looking south at Blm\_G01



Photo Orientation & Description: Looking North at Blm\_G01

**ORIGINAL OR SUBSEQUENT SURVEY EVIDENCE FOUND:** Include, search area or areas, search procedure, etc.

Date of Field work/Search: 03/04/2022 By: JMG Monument Found: Rebar with Sheppard cap BTs or Reference Objects Found: Found Witnesses B, C & D from 2008 Monument Record, known as Witnesses B, C & D above Project #: Washington Monuments Field Book: 54/46 Equipment: The basis of bearings is Grid North System NAD83(2011)/Indiana West NAVD 88, Epoch 2010.0000, geoid12b\_conus.db3, US Survey Feet, derived from GPS observations utilizing the Indiana Real-Time Network (INCORS). Coordinate data was collected with a Javad Triumph LS Network Rover. Coordinates are available upon request. Distances to witness ties were collected with a Leica Disto laser distance meter. Bearings to witness ties were collected with the internal magnetic compass of the Javad Triumph LS and were automatically adjusted to grid north and are approximately shown hereon for reference. Priority should be given to provided distances over bearings. Notes: All witness photos on file in the Monroe County Surveyors Office.



**OFFICE OF THE MONROE COUNTY SURVEYOR • Trohn Enright-Randolph**

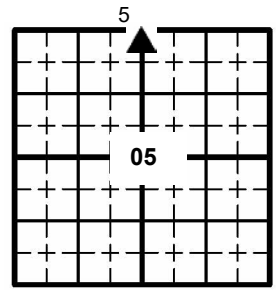
119 W 7th Street, Bloomington, IN 47404 • 812-349-2570 • surveyorsoffice@co.monroe.in.us

Page 2 of 3

**MONUMENT RECORD**Corner ID: **Blm\_G01****Quarter Corner**

Section 05- T09N-R01W, 2nd P.M.

Bloomington Township, Monroe County, Indiana



**OTHER EVIDENCE:** *Describe corner location relative to nearby features and how to reach the corner location – note fences, roads, timber cutting lines, mow lines, clearings, plantings, streams, topo changes, etc.*

Blm\_G01 is located approximately 29' off of the west side of Bottom Road as the road traverses west and then immediately goes south. The monument is an offset corner of Wash\_G25. Each's location can be seen from the other's site. Blm\_G01 is in a wooded area between a farm field and a farm road that goes west off of Bottom Rd. There are old fence posts that run parallel with farm road on the south and the farm field on the north.

**MONUMENT PRESERVATION:** *Describe work done to preserve existing monument.*

The "Protect Nearby Survey Markers" sign was no longer on the post and the post was badly bent. The Orange Survey Marker was splintered and mostly gone. The Monroe County Surveyor's Office removed the old post and set a new sign and post closer to the monument (Witness B). Geodetic Coordinates were collected for the monument, Witness 103016 and Wash\_G25.

**THEORY OF LOCATION:** *Describe the theory of location for acceptance of this monument. Include monument origin and associated uncertainty.*

The rebar was previously witnessed by the Monroe County Surveyor, Kevin Enright, on December 26, 2007 and accepted by the Monroe County Surveyor Review Board on January 15, 2008. The 2008 Monument Record accepted the rebar per an ALTA/ACSM Land Title Survey (2007) by Michael E. Sheppard recorded as Instrument Number 2007012507.IN. References on file: a final plat by Bernard A. Guerrettaz II, Southridge at the Farm Minor Subdivision (2009) recorded as instrument number 2009005258.IN in the office of the recorder. Historic research has not yet been performed to prove the validity of this monument.

**CERTIFICATION:**

DRAFT

**OFFICE OF THE MONROE COUNTY SURVEYOR • Trohn Enright-Randolph**

119 W 7th Street, Bloomington, IN 47404 • 812-349-2570 • surveyoroffice@co.monroe.in.us

Page 3 of 3

# MONUMENT RECORD

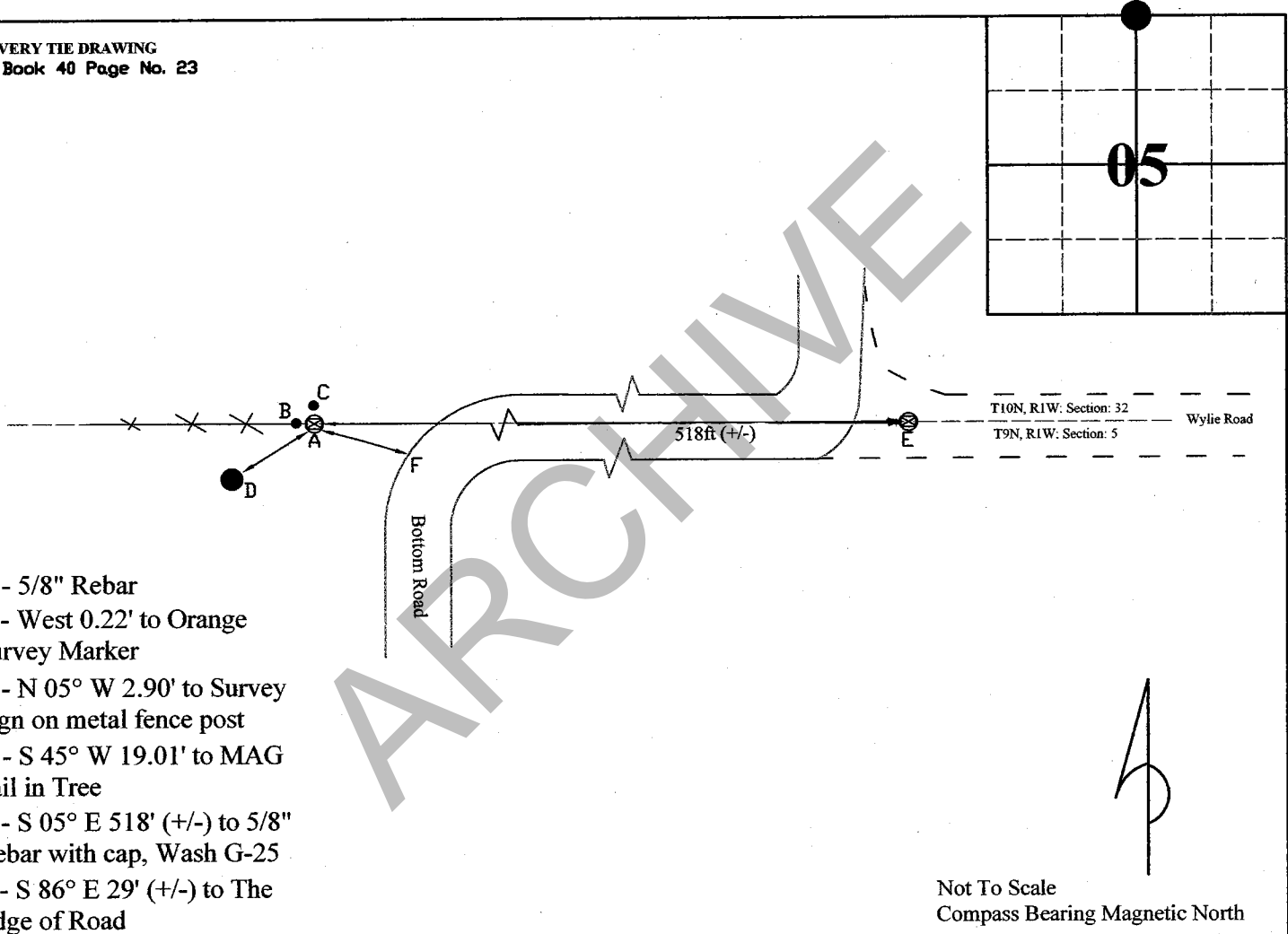
## State of Indiana - County of Monroe

**Section:** 5**Township:** 9 North**Range:** 1 West**Corner ID:** Blm G-01

**Monument Description & Remarks:** 5/8" Rebar with 2" aluminum cap, "MICHAEL E. SHEPPARD LS# 200100021". Survey Sign 3.5ft above ground at pt. C

**References On File:** Michael E. Sheppard survey, ALTA/ACSM LAND TITLE (2007), on file in Recorder Office cabinet S, envelope 389

RECOVERY TIE DRAWING  
Field Book 40 Page No. 23



I, Kevin P. Enright, Monroe County Surveyor, hereby certify that this document was prepared under my direction in accordance with the provisions of section 36-2-11 of the Indiana Code; and the above data is given under my hand and seal this 26th day of December, 2007.

*Kevin P. Enright*



Administered by the Monroe County Surveyor Review Board

Date: 1-15-2008 DB

Drawn by: T.E.R. Print date: January 08, 2008



**PENDING**

## MONUMENT RECORD

Corner ID: **Blm\_I01**

## Section Corner

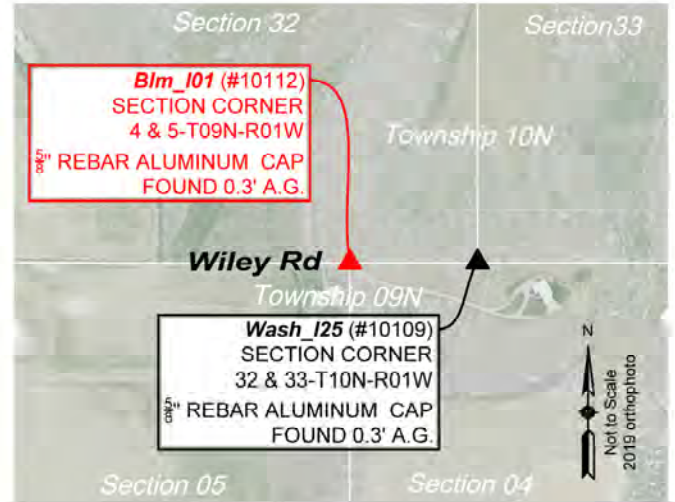
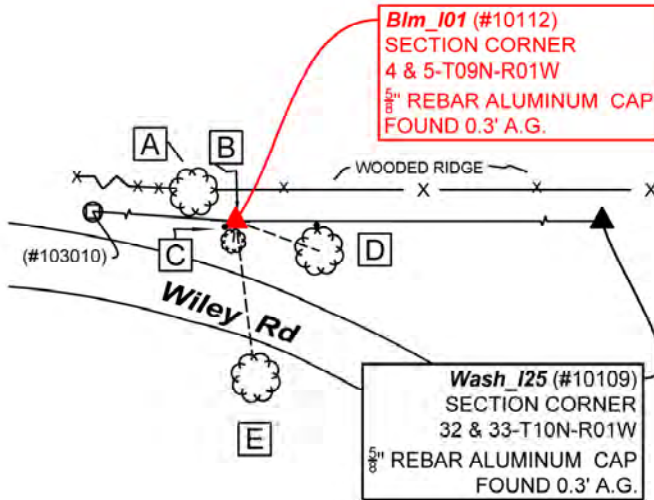
Sections 4 & 5- T09N-R01W, 2nd P.M.  
Bloomington Township, Monroe County, Indiana

Section 05      Section 04  
T09N-R01W      T09N-R01W  
*Bloomington*      *Bloomington*

**MONUMENT:** *Describe monument set or found (Include material type, scribing, distance above/below grade, dimensions.)*

5/8" Rebar with 2" Aluminum Cap stamped "MICHAEL E SHEPPARD LS#20100021" 0.3' above grade on ridge above Wylie Road.

**MONUMENT LOCATION SKETCH:**



## WITNESS MONUMENT TIES

All ties to new Bearing Trees (BTs) are a mag nail set in a 1-1/2" plastic washer stamped "SURVEY MARKER - DO NOT REMOVE" and hack mark at the root crown (less than 12" above ground) perpendicular to the center of the tree, unless otherwise noted. BT diameters are noted as dbh and are measured approximately 4.5' above ground. Bearings are measured from the monument to the center of the BT, distances are measured from the monument to the mag nail.

<i>ID</i>	<i>BEARING</i>	<i>DISTANCE</i>	<i>DESCRIPTION</i>
Witness A	N 88d W	6.6'	"Protect Nearby Survey Marker" sign set on northeast side of 24" bifurcated white oak tree 4' above grade.
Witness B	N 6d E	0.5'	Orange "Survey Marker" sign found. Measured from it's center at 0.3' above grade to the monument as per 2008 tie sheet.
Witness C	S 7d W	5.4'	Mag nail signal found. New mag nail and washer set in scar on north side of 74" white oak tree as per 2008 tie sheet.
Witness D	S 70d E	23.4'	Mag nail signal found. New mag nail and washer set in scar on north side of 61" white oak tree as per 2008 tie sheet.
Witness E	S 7d E	36.1'	North face of a 134" white oak tree as per 2008 tie sheet.

## MONUMENT ACCESSORIES

Other survey grade monuments that were located in the vicinity and their relation to the monument. Geodetic coordinates in this table are provided in the format Easting, Northing.

(#10109)	S 89d58'33" E	539.87'	5/8" Rebar-with Aluminum Cap stamped "Michael E Sheppard LS#20100021" found 0.3" above grade.
(#103010)	N 86d25'42" W	80.32'	Top center of a 6" wooden fencepost 5.1' above grade with bent rebar on east side.



OFFICE OF THE MONROE COUNTY SURVEYOR • Trohn Enright-Randolph

119 W 7th Street, Bloomington, IN 47404 • 812-349-2570 • [surveyoroffice@co.monroe.in.us](mailto:surveyoroffice@co.monroe.in.us)

Page 1 of 3



**PENDING**

## MONUMENT RECORD

Corner ID: **Blm\_I01**

## Section Corner

Sections 4 & 5- T09N-R01W, 2nd P.M.  
Bloomington Township, Monroe County, Indiana

Section 05  
T09N-R01W  
Bloomington

Section 04  
T09N-R01W  
Bloomington

**PHOTO IDENTIFIED:** *Photo Date:* 01/31/2022



*Photo Orientation & Description:* Blm\_I01 from above



**Photo Orientation & Description:** Looking east down Wylie Road at Blm 101 Location



*Photo Orientation & Description:* Blm\_I01 from the south, looking up at the wooded ridge from Wylie Road.



*Photo Orientation & Description:* Blm 101 from the east

**ORIGINAL OR SUBSEQUENT SURVEY EVIDENCE FOUND:** *Include, search area or areas, search procedure, etc.*

*Date of Field work/Search:* 01/31/2022 *By:* JMG *Monument Found:* Rebar with Sheppard Cap *BTs or Reference Objects Found:* Found Witnesses B C D & E from 01/15/2008 Monument Record = Witnesses B C D & E on record above. *Project #:* Washington Monuments *Field Book:* 54/44 *Equipment:* The basis of bearings is Grid North System NAD83(2011)/Indiana West NAVD 88, Epoch 2010.0000, geoid12b\_conus.db3, US Survey Feet, derived from GPS observations utilizing the Indiana Real-Time Network (INCORS). Coordinate data was collected with a Javad Triumph LS Network Rover. Coordinates are available upon request. Distances to witness ties were collected with a Leica Disto laser distance meter. Bearings to witness ties were collected with the internal magnetic compass of the Javad Triumph LS and were automatically adjusted to grid north and are approximately shown hereon for reference. Priority should be given to provided distances over bearings. *Notes:* All witness photos on file in the Monroe County Surveyors Office.



OFFICE OF THE MONROE COUNTY SURVEYOR • Trohn Enright-Randolph

119 W 7th Street, Bloomington, IN 47404 • 812-349-2570 • [surveyoroffice@co.monroe.in.us](mailto:surveyoroffice@co.monroe.in.us)

Page 2 of 3



**PENDING**

## MONUMENT RECORD

Corner ID: **Blm\_I01**

## Section Corner

Sections 4 & 5- T09N-R01W, 2nd P.M.  
Bloomington Township, Monroe County, Indiana

Section 05      Section 04  
T09N-R01W      T09N-R01W  
*Bloomington*      *Bloomington*

**OTHER EVIDENCE:** Describe corner location relative to nearby features and how to reach the corner location – note fences, roads, timber cutting lines, mow lines, clearings, plantings, streams, topo changes, etc.

The Monument is an offset corner with Wash\_I25. Both are situated between barbwire fence on the south and a series of signs that state that there are buried communication lines on the north. Both monuments are on the north side of Wiley Road. Blm\_I01 can be seen from the road. It is on a steep hill framed by barbwire. Approximately 50' further east on Wiley Road, there is a trail of riprap that provides better footing.

**MONUMENT PRESERVATION:** *Describe work done to preserve existing monument.*

Geodetic coordinates were captured for the monument and the fencepost (Witness A) along with a series of metal fencepost that lead from Wiley Road up the hill to the monument and beyond towards Wash\_125. "Protect Nearby Survey Marker" was nailed to the NE side of a bifurcated white oak, 4' above grade (Witness F)

**THEORY OF LOCATION:** *Describe the theory of location for acceptance of this monument. Include monument origin and associated uncertainty.*

The stone was previously witnessed by the Monroe County Surveyor, Kevin Enright, on December 26, 2007 and accepted by the Monroe County Surveyor Review Board on January 15, 2008. The 2008 Monument Record accepted the stone per a survey by Michael E. Sheppard, Alta/ACSM Land Title Survey (2007) recorded as Instrument Number 2007012507.IN. References on file: A final plat by Bernard A. Guerrettaz II, Southridge at the Farm Minor Subdivision (2009), on file at the Recorder's Office as 2009005258.IN and a Tracy L. McGill survey, Location Control Route Survey Plat Proposed I-69 Section 5 Segment 4 (2013), on file at the Recorder's Office as 2013015455.IN. Historic research has not yet been performed to prove the validity of this monument.

**CERTIFICATION:**



OFFICE OF THE MONROE COUNTY SURVEYOR • Trohn Enright-Randolph

119 W 7th Street, Bloomington, IN 47404 • 812-349-2570 • [surveyoroffice@co.monroe.in.us](mailto:surveyoroffice@co.monroe.in.us)

Page 3 of 3

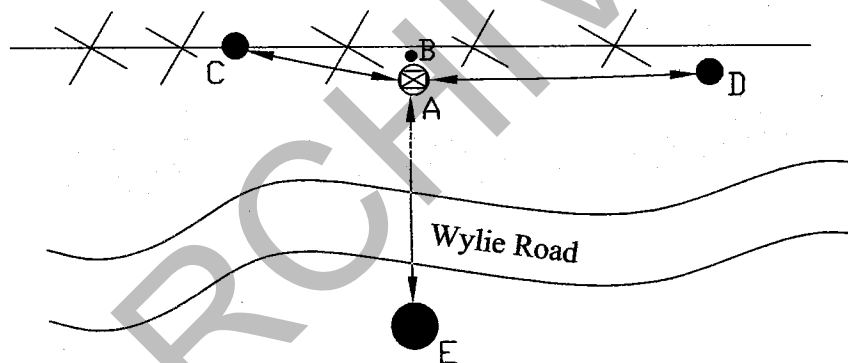
**MONUMENT RECORD**  
State of Indiana - County of Monroe

**Section: 5****Township: 9 North****Range: 1 West****Corner ID: Blm I-01**

**Monument Description & Remarks:** 5/8" Rebar with 2" aluminum cap, "MICHAEL E. SHEPPARD LS# 200100021". orange Survey Sign post 4ft tall

**References On File:** Michael E. Sheppard survey, ALTA/ACSM LAND TITLE (2007), on file in Recorder Office cabinet S, envelope 389

RECOVERY TIE DRAWING  
Field Book 40 Page No. 25

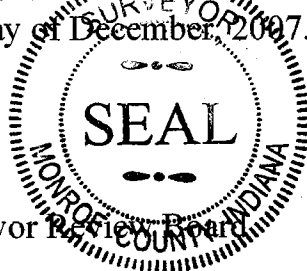


- A** - 5/8" Rebar  
**B** - N 06° E 0.53' to Orange Survey Marker  
**C** - N 72° W 4.97' to MAG nail in 26" White Oak  
**D** - S 73° E 22.87' to MAG nail in 18" White Oak  
**E** - S 06° W 36.40' to Tree Face of a 48" White Oak

Not To Scale  
Compass Bearing Magnetic North

I, Kevin P. Enright, Monroe County Surveyor, hereby certify that this document was prepared under my direction in accordance with the provisions of section 36-2-12-11 of the Indiana Code; and the above data is given under my hand and seal this 26th day of December, 2007.

*Kevin Enright*



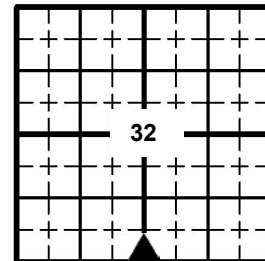
Administered by the Monroe County Surveyor Review Board

Date: 1-15-2008 DB

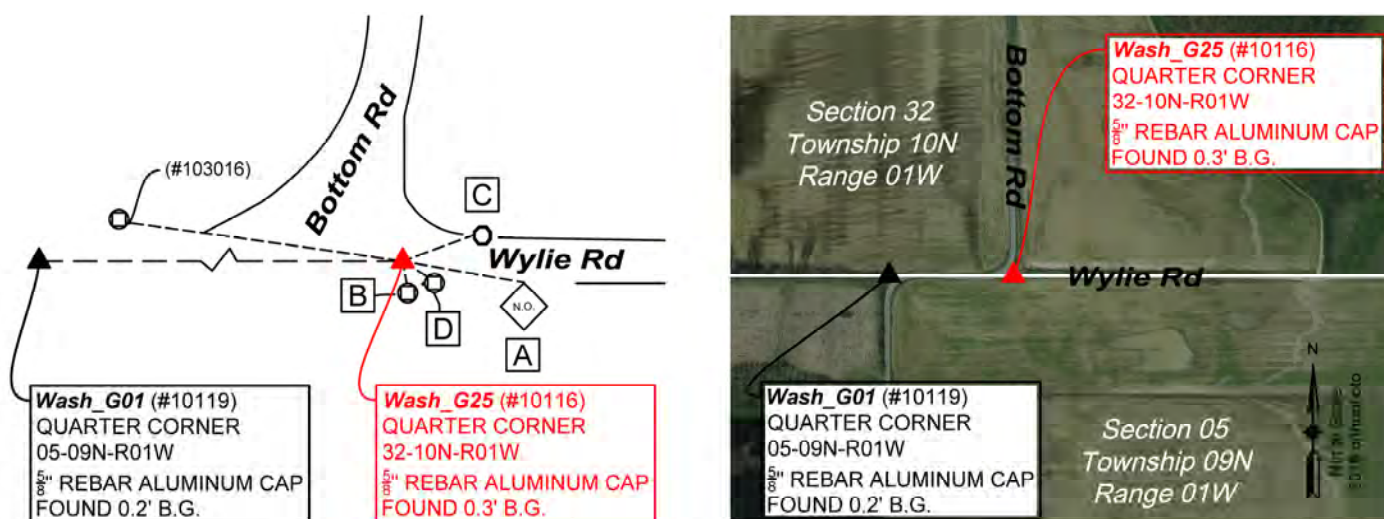
**PENDING****MONUMENT RECORD**Corner ID: **Wash\_G25****Quarter Corner**

Section 32- T10N-R01W, 2nd P.M.

Washington Township, Monroe County, Indiana

**MONUMENT:** Describe monument set or found (Include material type, scribing, distance above/below grade, dimensions.)

5/8" Rebar with Aluminum Cap stamped "MICHAEL E SHEPPARD LS#20100021" found 0.3' below grade in the entry to West Wiley Road. Cap was firmly in place but damaged with only the letters "HEPPARD" being legible.

**MONUMENT LOCATION SKETCH:****WITNESS MONUMENT TIES**

All ties to new Bearing Trees (BTs) are a mag nail set in a 1-1/2" plastic washer stamped "SURVEY MARKER - DO NOT REMOVE" and hack mark at the root crown (less than 12" above ground) perpendicular to the center of the tree, unless otherwise noted. BT diameters are noted as dbh and are measured approximately 4.5' above ground. Bearings are measured from the monument to the center of the BT, distances are measured from the monument to the mag nail.

ID	BEARING	DISTANCE	DESCRIPTION
Witness A	S 80d E	51.3'	"NO OUTLET" sign, measured to monument at 2' above grade. Bearing shot to sign's center face from monument
Witness B	S 10d E	9.5'	Found "Protect Nearby Survey Markers" sign 3.2' above grade as per 2008 tie sheet.
Witness C	N 70d E	31.5'	"STOP" sign measured to monument at 4.2' above grade. Bearings shot to spot on metal sign post 6' above grade.
Witness D	S 58d E	12.2'	Found mag nail on west side of 6" x 6" mail box post 0.8' above grade as per 2008 tie sheet.

**MONUMENT ACCESSORIES**

Other survey grade monuments that were located in the vicinity and their relation to the monument. Geodetic coordinates in this table are provided in the format Easting, Northing.

(#103016)	N 81d58'48" W	114.85'	Mag nail and washer set on east side of 6" wooden post 1' above grade.
(#10119)	N 89d58'56" W	517.69'	5/8" Rebar with Aluminum Cap stamped "Michael E Sheppard LS#201100021" found 0.2' above grade.

**OFFICE OF THE MONROE COUNTY SURVEYOR • Trohn Enright-Randolph**

119 W 7th Street, Bloomington, IN 47404 • 812-349-2570 • surveyoroffice@co.monroe.in.us

Page 1 of 3



**MONUMENT RECORD**Corner ID: **Wash\_G25****Quarter Corner**

Section 32- T10N-R01W, 2nd P.M.

Washington Township, Monroe County, Indiana

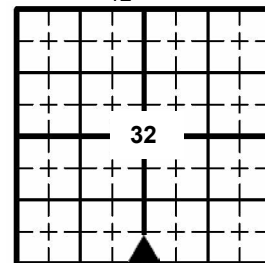
**PHOTO IDENTIFIED:** Photo Date: 03/04/2022

Photo Orientation &amp; Description: Wash\_G25 from above



Photo Orientation &amp; Description: Wash\_G25 from Blm\_G01



Photo Orientation &amp; Description: Wash\_G25 from north



Photo Orientation &amp; Description: Wash\_G25 from west

**ORIGINAL OR SUBSEQUENT SURVEY EVIDENCE FOUND:** Include, search area or areas, search procedure, etc.

Date of Field work/Search: 03/04/2022 By: JMG Monument Found: Rebar with Sheppard cap BTs or Reference Objects Found: Found all witnesses from 2008 Monument Record. However, Witness D (Herein known as Witness C) The Stop sign was replaced and moved further east but the Monroe County Surveyor's Office was able to locate the original sign anchor in the ground. Project #: Washington Monuments Field Book: 54/47 Equipment: The basis of bearings is Grid North System NAD83(2011)/Indiana West NAVD 88, Epoch 2010.0000, geoid12b\_conus.db3, US Survey Feet, derived from GPS observations utilizing the Indiana Real-Time Network (INCORS). Coordinate data was collected with a Javad Triumph LS Network Rover. Coordinates are available upon request. Distances to witness ties were collected with a Leica Disto laser distance meter. Bearings to witness ties were collected with the internal magnetic compass of the Javad Triumph LS and were automatically adjusted to grid north and are approximately shown hereon for reference. Priority should be given to provided distances over bearings. Notes: All witness photos on file in the Monroe County Surveyors Office.

**OFFICE OF THE MONROE COUNTY SURVEYOR • Trohn Enright-Randolph**

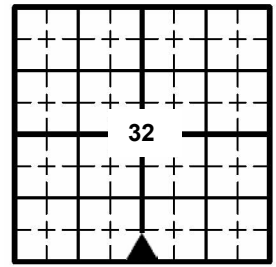
119 W 7th Street, Bloomington, IN 47404 • 812-349-2570 • surveyoroffice@co.monroe.in.us

Page 2 of 3

**MONUMENT RECORD**Corner ID: **Wash\_G25****Quarter Corner**

Section 32- T10N-R01W, 2nd P.M.

Washington Township, Monroe County, Indiana



**OTHER EVIDENCE:** *Describe corner location relative to nearby features and how to reach the corner location – note fences, roads, timber cutting lines, mow lines, clearings, plantings, streams, topo changes, etc.*

Wash\_G25 is located at approximately 30' off of the east side of Bottom Road, immediately as one would turn east on to West Wiley Road. It is one of a series of Michael Sheppard rebar with aluminum caps set in 2007 and it is an offset corner with Blm\_G01. Each location can be seen from each monument's site and share the Witness 103016. Wash\_G25 is under 4" of packed gravel close to the mail boxes for W. Wiley Road. The cap is mostly illegible. Only the letters "HEPPARD" can be read. But the cap maintains a solid grip on the rebar.

**MONUMENT PRESERVATION:** *Describe work done to preserve existing monument.*

The integrity of the "Protect Nearby Survey Markers" sign was checked and assured. Gravel was packed back over monument. Geodetic coordinates were captured for the monument, Witness 103016 and Blm\_G01.

**THEORY OF LOCATION:** *Describe the theory of location for acceptance of this monument. Include monument origin and associated uncertainty.*

The rebar was previously witnessed by the Monroe County Surveyor, Kevin Enright, on December 26, 2007 and accepted by the Monroe County Surveyor Review Board on January 15, 2008. The 2008 Monument Record accepted the rebar per an ALTA/ACSM Land Title Survey (2007) by Michael E. Sheppard recorded as Instrument Number 2007012507.IN. References on file: Tracy L. McGill survey, Location Control Route Survey Plat Proposed I-69 Section 5 Segment 4 (2013), on file at the Recorder's Office as 2013015455.IN. Historic research has not yet been performed to prove the validity of this monument.

**CERTIFICATION:**

DRAFT

**OFFICE OF THE MONROE COUNTY SURVEYOR • Trohn Enright-Randolph**

119 W 7th Street, Bloomington, IN 47404 • 812-349-2570 • surveyorsoffice@co.monroe.in.us

Page 3 of 3

# MONUMENT RECORD

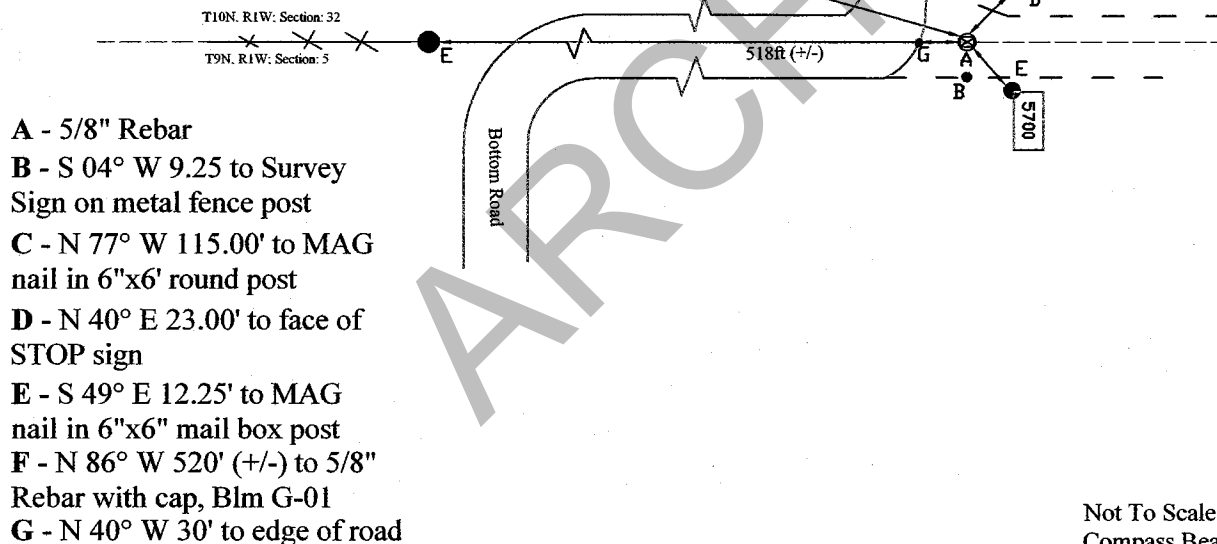
## State of Indiana - County of Monroe

**Section:** 32**Township:** 10 North**Range:** 1 West**Corner ID:** Wash G-25

**Monument Description & Remarks:** 5/8" Rebar with 2" aluminum cap, "MICHAEL E. SHEPPARD LS# 200100021" (4" below grade). Survey Sign 4ft above ground at pt. B

**References On File:** Michael E. Sheppard survey, ALTA/ACSM LAND TITLE (2007), on file in Recorder Office cabinet S, envelope 389

RECOVERY TIE DRAWING  
Field Book 40 Page No. 24



I, Kevin P. Enright, Monroe County Surveyor, hereby certify that this document was prepared under my direction in accordance with the provisions of sections 36-1-11 of the Indiana Code; and the above data is given under my hand and seal this 26th day of December, 2007.

*Kevin P. Enright*



Administered by the Monroe County Surveyor Review Board

Date: 1-15-2008 DB

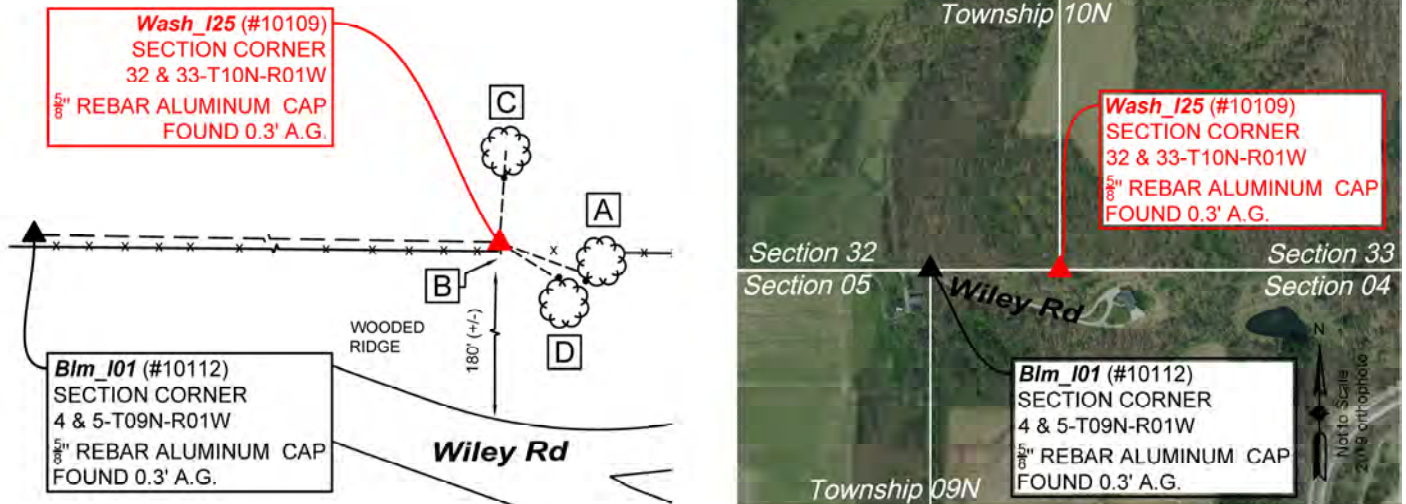


**PENDING****MONUMENT RECORD**Corner ID: **Wash\_I25****Section Corner**

Sections 32 & 33- T10N-R01W, 2nd P.M.  
Washington Township, Monroe County, Indiana

Section 32	Section 33
T10N-R01W	T10N-R01W
Washington	Washington

**MONUMENT:** Describe monument set or found (Include material type, scribing, distance above/below grade, dimensions.)  
5/8" Rebar with 2" Aluminum Cap stamped "MICHAEL E SHEPPARD LS#20100021" 0.3' above grade.

**MONUMENT LOCATION SKETCH:****WITNESS MONUMENT TIES**

All ties to new Bearing Trees (BTs) are a mag nail set in a 1-1/2" plastic washer stamped "SURVEY MARKER - DO NOT REMOVE" and hack mark at the root crown (less than 12" above ground) perpendicular to the center of the tree, unless otherwise noted. BT diameters are noted as dbh and are measured approximately 4.5' above ground. Bearings are measured from the monument to the center of the BT, distances are measured from the monument to the mag nail.

ID	BEARING	DISTANCE	DESCRIPTION
Witness A	S 70d E	22'	Mag nail and washer set in hack 0.9' above grade in the southwest side of 20" sugar maple tree.
Witness B	S 7d E	2.9'	Set "Protect Nearby Survey Marker" sign 2.5' above grade on metal post.
Witness C	N 4d E	23.9'	Mag nail found loose 1.4' above grade as per 2008 tie sheet. Reset mag nail with washer in hack in same spot on the south side of a 56" shagbark hickory tree.
Witness D	S 58d E	19.3'	Mag nail found 1.3' above grade on the north side of an 84" white ash tree as per 2008 tie sheet. The tree was snapped at approximately 25' up from it's base.

**MONUMENT ACCESSORIES**

Other survey grade monuments that were located in the vicinity and their relation to the monument. Geodetic coordinates in this table are provided in the format Easting, Northing.

(#10109)	N 89d58'19" W	539.88'	5/8" Rebar with Aluminum Cap stamped "Michael E Sheppard LS#20100021" found 0.3" above grade.
----------	---------------	---------	---



**OFFICE OF THE MONROE COUNTY SURVEYOR • Trohn Enright-Randolph**

119 W 7th Street, Bloomington, IN 47404 • 812-349-2570 • surveyoroffice@co.monroe.in.us

Page 1 of 3

**PENDING**

# MONUMENT RECORD

Corner ID: **Wash\_I25**

## Section Corner

Sections 32 & 33- T10N-R01W, 2nd P.M.  
Washington Township, Monroe County, Indiana

Section 32	Section 33
T10N-R01W	T10N-R01W
Washington	Washington

**PHOTO IDENTIFIED:** Photo Date: 03/21/2022 & 1/31/2022 (2<sup>nd</sup> Picture)



Photo Orientation & Description: Wash\_I25 from above



Photo Orientation & Description: Wash\_I25 before tree removal



Photo Orientation & Description: Looking south at Wash\_I25.  
Fallen portion of Witness D in background



Photo Orientation & Description: Looking east at Wash\_I25



**OFFICE OF THE MONROE COUNTY SURVEYOR • Trohn Enright-Randolph**

119 W 7th Street, Bloomington, IN 47404 • 812-349-2570 • surveyoroffice@co.monroe.in.us

Page 2 of 3





## MONUMENT RECORD

Corner ID: **Wash\_I25**

### Section Corner

Sections 32 & 33- T10N-R01W, 2nd P.M.  
Washington Township, Monroe County, Indiana

Section 32	Section 33
T10N-R01W	T10N-R01W
Washington	Washington

#### ORIGINAL OR SUBSEQUENT SURVEY EVIDENCE FOUND: *Include, search area or areas, search procedure, etc.*

Date of Field work/Search: 01/28/2022 By: JMG Monument Found: 5/8" Rebar with 2" Aluminum Cap stamped "MICHAEL E SHEPPARD LS#20100021" 0.3' above grade BTs or Reference Objects Found: Found Witnesses B, C & D from 12/26/2007 Monument Record = Witnesses B, C & D above. Project #: Washington Monuments Field Book: 54/43 Equipment: The basis of bearings is Grid North System NAD83(2011)/Indiana West NAVD 88, Epoch 2010.0000, geoid12b\_conus.db3, US Survey Feet, derived from GPS observations utilizing the Indiana Real-Time Network (INCORS). Coordinate data was collected with a Javad Triumph LS Network Rover. Coordinates are available upon request. Distances to witness ties were collected with a Leica Disto laser distance meter. Bearings to witness ties were collected with the internal magnetic compass of the Javad Triumph LS and were automatically adjusted to grid north and are approximately shown hereon for reference. Priority should be given to provided distances over bearings. Notes: All witness photos on file in the Monroe County Surveyors Office.

#### OTHER EVIDENCE: *Describe corner location relative to nearby features and how to reach the corner location – note fences, roads, timber cutting lines, mow lines, clearings, plantings, streams, topo changes, etc.*

The monument is an offset corner of Blm\_I01. Both are situated between barbwire fence on the south and a series of signs that state that there are buried communication lines on the north. Both monuments are on the north side of Wiley Road. Wash\_I25 is on a ridge in the woods just west of where a private drive going northeasterly and southeasterly begins. If one were to park on the north side of the road, just before the elliptical shaped driveway begins, and traverse north up the ridge, Wash\_I25 can be found.

#### MONUMENT PRESERVATION: *Describe work done to preserve existing monument.*

There was an 8" tree growing plus or minus one 1" from the monument. The tree was removed as to not push the monument from the point at which it was set. Geodetic coordinates were collected for the monument. Some quick shots were captured of the barbwire that ran nearby. A new "Protect Nearby Survey Markers" sign was set.

#### THEORY OF LOCATION: *Describe the theory of location for acceptance of this monument. Include monument origin and associated uncertainty.*

The rebar was previously witnessed by the Monroe County Surveyor, Kevin Enright, on December 26, 2007 and accepted by the Monroe County Surveyor Review Board on January 15, 2008. The 2008 Monument Record accepted the rebar per an Alta/ACSM Land Title Survey by survey by Michael E. Sheppard (2007) recorded as Instrument Number 2007012507.IN in the office of the Recorder. References on file: A final plat by Bernard A. Guerrettaz II, Southridge at the Farm Minor Subdivision (2009), on file at the Recorder's Office as 2009005258.IN and a Tracy L. McGill survey, Location Control Route Survey Plat Proposed I-69 Section 5 Segment 4 (2013), on file at the Recorder's Office as 2013015455.IN. Historic research has not yet been performed to prove the validity of this monument.

#### CERTIFICATION:



OFFICE OF THE MONROE COUNTY SURVEYOR • Trohn Enright-Randolph

119 W 7th Street, Bloomington, IN 47404 • 812-349-2570 • surveyorsoffice@co.monroe.in.us

Page 3 of 3



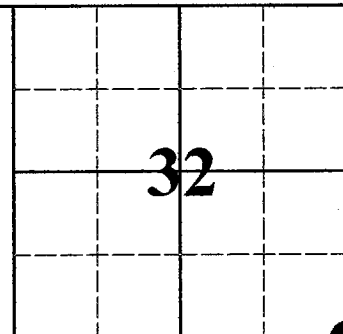
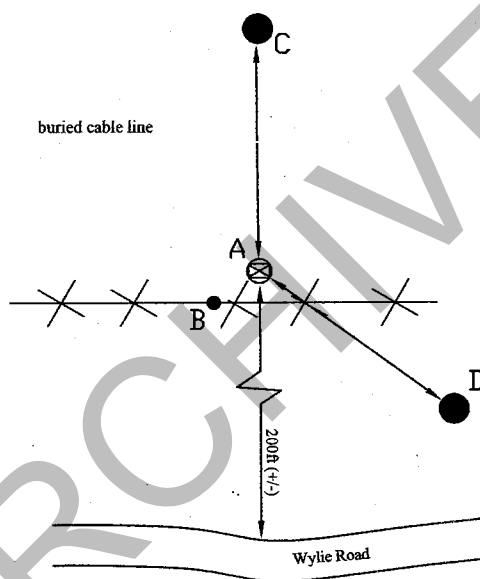
**MONUMENT RECORD**  
State of Indiana - County of Monroe

**Section:** 32**Township:** 10 North**Range:** 1 West**Corner ID:** Wash I-25

**Monument Description & Remarks:** 5/8" Rebar with 2" aluminum cap, "MICHAEL E. SHEPPARD LS# 200100021". Survey Sign 4.5ft above ground at pt. B

**References On File:** Michael E. Sheppard survey, ALTA/ACSM LAND TITLE (2007), on file in Recorder Office cabinet S, envelope 389

RECOVERY TIE DRAWING  
Field Book 40 Page No. 26



- A** - 5/8" Rebar  
**B** - S 44° W 3.15' to Survey  
Sign on metal fence post  
**C** - N 04° E 23.25' to MAG  
nail in 15" Hickory  
**D** - S 50° E 18.32' to MAG  
nail in 24" White Ash

Not To Scale  
Compass Bearing Magnetic North

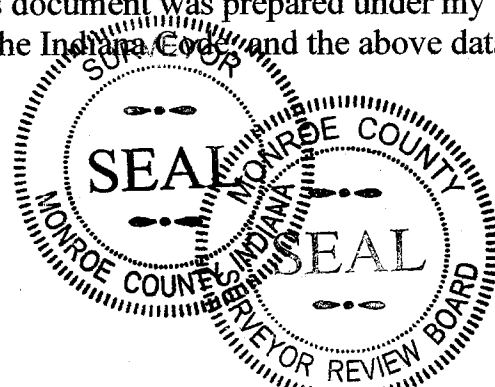


I, Kevin P. Enright, Monroe County Surveyor, hereby certify that this document was prepared under my direction in accordance with the provisions of section 36-2-12-11 of the Indiana Code, and the above data is given under my hand and seal this 26th day of December, 2007.

*Kevin P. Enright*

Administered by the Monroe County Surveyor Review Board

Date: 1-15-2008 DB



Drawn by: T.E.R. Print date: January 11, 2008