



Office of the Monroe County Surveyor
Trohn Enright-Randolph

Health Services Building
119 West 7th Street
Bloomington, IN 47404
Phone: (812) 349-2570
surveyorsoffice@co.monroe.in.us

AGENDA
SURVEYOR REVIEW BOARD
REGULAR MEETING
Via Zoom App
Tuesday, February 22, 2022

- I. Call to Order**
- II. Approval of agenda**
- III. Approval of meeting minutes from December 9, 2021**
- IV. New Business**
 - a. Office Update**
- V. Certification of corners: Per_C07, Per_E05, Per_E07, Wash_M17, Wash_M19, Wash_M21**
- VI. Public input**
- VII. Adoption of next meeting date**
- VIII. Adjournment**

Zoom Meeting Information

<https://monroecounty-in.zoom.us/j/84648553923?pwd=VmdvUGl1MFR5NzU3VmhXK1JiejZzUT09>

Meeting ID: 846 4855 3923

Password: 668366

Dial by your location

+1 312 626 6799 US (Chicago)

Meeting ID: 846 4855 3923

The meeting is open to the public. Dates are subject to change.

For additional information, please call the Office of the Monroe County Surveyor at (812) 349-2570.

Anyone who requires an auxiliary aid or service for effective communication, or a modification of policies or procedures to participate in a program, service, or activity of Monroe County, should contact Monroe County Title VI Coordinator, (812) 349-2553, as soon as possible but no later than forty-eight (48) hours before the scheduled event.

Individuals requiring special language services should, if possible, Government Title VI Coordinator at least seventy-two (72) hours prior to the date on which the services will be needed.

Survey Utility



MINUTES
SURVEYOR REVIEW BOARD
REGULAR MEETING
Via Zoom App
DECEMBER 9, 2021 at 4 PM

MEMBERS PRESENT: Todd Borgman, Eric Deckard, Rachel Oser

MEMBERS ABSENT: Phil Tapp

STAFF: Trohn Enright-Randolph (County Surveyor), Donna Barbrick (Secretary), Jason George (Survey Technician), Technical Services

- I. Call to Order:** Trohn Enright-Randolph called the meeting to order.
- II. Approval of Agenda: Motion to approve by Deckard, second by Oser. Vote: AYE (unanimous). Motion carried.**
- III. Approval of meeting minutes from October 28, 2021**
Motion to approve by Deckard; second by Oser. Oser said she would recuse herself for the vote. Vote: AYE 1; ABSTAIN 1. Minutes approved.
- IV. New Business**
 - a. Office Update**

Regarding 2022 reappointments to the board, Deckard, Borgman and Oser indicated they would be willing to serve again in the coming year. Regarding pay for board meetings, Trohn said Donna would be checking on address information and checks would be processed in the near future. Regarding Council and Commissioners Support, Trohn indicated there is support for spending Section Corner Perpetuation Funds for Perpetuation surveys. Trohn said we were able to get more training on the JAVAD today and will be able to get more remote locations utilizing this training.
- V. Certification of corners: InCr_A11, InCr_A13, InCr_A17, InCr_A21, InCr_C13, InCr_C15, InCr_C17, Per_C09, Per_E09**

Indian Creek A11. Trohn said a BRG survey was referenced. He displayed a Matt Badger survey and read a description about two railroad spikes found in the intersection of the driveway. Badger had these described as witnesses set by BRG in an earlier survey. Trohn said he found another survey where there had been a rebar set but now there is no rebar and they set a railroad spike in 2008. He said we do not know what happened with the rebar. Deckard noted that Badger did not go into detail about his theory of location. Trohn said this corner had been tabled in 2011 but we are not sure why. There was a discussion of how Badger might have determined the corner.

Borgman said if you look at the BLA service it looks like they did not hold it. He said on Marty's survey he set a distance of 280 feet. He said some of the Graham rebars show up on the BLA survey as well. Trohn said MCSO can perhaps do more research on this and suggested tabling it at this time.

Motion to table InCr_A11 made by Oser; Deckard seconded. VOTE: YES (unanimous).

Trohn said these ties are part of our corner documentation program and were submitted by Rachel Oser. He talked about a surveyor recusing him/herself when submitted corners are voted on and that surveyor is on the board. He said I have looked at these in detail when they were offered and when they were submitted but it has been a while. Rachel said I would like to add that I got paid already by the county on these, even if the SRB ends up tabling it and the monument doesn't get accepted it would not be money out of someone's pocket.

Trohn displayed the Oser survey. Trohn talked about the corner documentation program. He said to go through the program, the surveyor has to go above and beyond the job they are performing for the client. He said the corners do have to be tied to a recorded survey. He said my hope is that a surveyor who submits corners through the program, if they are not a board member, that they would attend the board meeting so they can speak firsthand.

Trohn said this was submitted by Kevin Enright and accepted by the SRB in 2011. He talked about the documentation Oser had included in the surveyor report. He said the format that is going to be approved on service agreements moving forward is going to be this same format for corner documentation except we might start requiring a sketch.

Deckard and Borgman said they would like to treat these corners as a group. Trohn said the difference between a previously perpetuated monument and a new one is that they do not have geodetic controls and are necessarily tied into an extensive amount of work. He said moving forward we have decided to take a different approach and these will be required to be certified by a professional surveyor and there are geodetic controls. Oser commented that the amount that the program pays is different if there is already a tied off monument than when there is not. She said this is relevant when you're out in the field. Trohn said this format would be the one we will use in the documentation program as we move forward. He said we did not take any votes on the fee but we brought it to the SRB for discussion and input. Trohn talked about being transparent with the program.

Trohn talked InCr_A15 and a Geodetic Control form that can be submitted for a corner through the documentation program. Trohn said InCr_A17 had a certified tie noting a sandstone with no etching. Oser said the stone had etchings on the side that were seen after it had been cleaned off. Trohn said InCr_A21 had an accepted tiesheet noting a 5/8" rebar and mangled yellow cap. He talked about the new monument record by Oser. Oser talked about the rebar being the same but the some witnesses were gone and a guardrail was moved. Trohn said InCr_C13 had a 2011 accepted monument record with a railroad tie corner post located. He said the Oser monument record has the same corner post. Oser suggested talking about the theory of location for InCr_C15. Oser found an iron pipe below ground at the base of an old wooden post with barbwire fence remains and accepted that as best evidence of the corner.

Trohn said InCr_A17 had original survey notes dating back to 1815. He said a 5/8 rebar was found above ground. He said Oser accepted the rebar as best evidence of the corner.

Deckard asked why there was a hiatus in recorded surveys in the 1940s and 1950s. No one seemed to have an answer.

Oser talked about her work on InCr_E21 (not on the agenda). **Trohn suggested a motion to amend the agenda to add InCr_E21 to the Certification of corners agenda item. Motion by Deckard; second by Borgman. VOTE: YES – 2 and RECUSE-1. Motion carried.** Agenda revised.

Trohn said we had a railroad spike on an accepted tie approved in 2000. He said Oser found an iron monument 2 feet below ground in the road. He said the theory of location referenced a Bledsoe survey and the Enright tie sheet.

Deckard said he was ready for a motion. Trohn suggested a motion to approve InCr_A13 and InCr_A17, InCr_A21, InCr_C13, InCr_C15, InCr_C17, and InCr_E21. Motion by Deckard; second by Borgman. VOTE: Yes –2; Recuse –1. Motion carried.

Per_C09, Per_E09. Trohn talked about two monuments in Tapp Road, one in a roundabout. He said MSCO has a tiesheet for Per_C09 from 2006 with a mag nail. He talked about new witnesses. He said the SRB had looked at these previously. He said Oser and MCSO found a mag nail. There is also a sign. Trohn said Perry C_09 was a previously tied off monument. He said we had a survey and we calculated to this corner and were able to locate a 5/8" rebar north of a concrete culvert. He said the sketches on these tiesheets would be updated to have clearer lines. He said there is a CBU utility survey by Kevin Potter.

Borgman said I recently just held these. **Motion by Todd Borgman to approve Per_C09 and Per_E09. Second by Deckard. VOTE: Recuse--1; Yes – 2. Motion carried.**

VI. Public input

VII. Adoption of next meeting date/ Adjournment. Trohn said the next date would be determined.

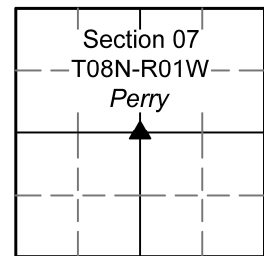
Minutes approved: _____

Secretary: _____

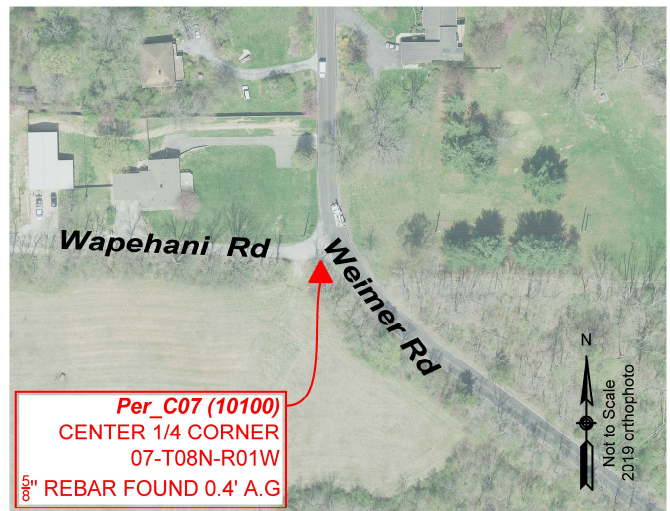
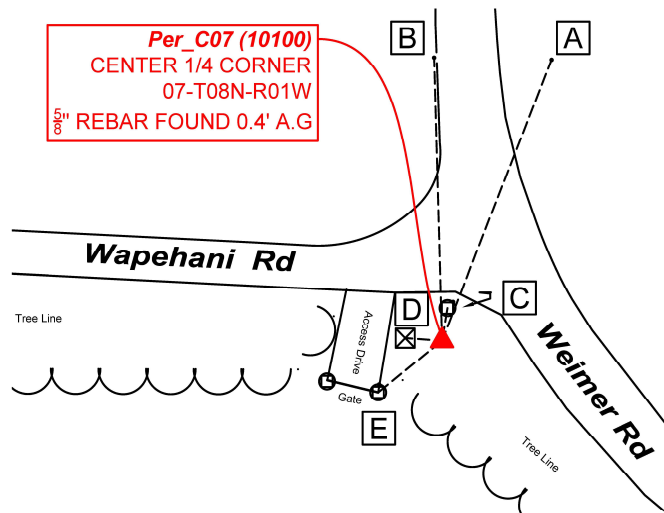
PENDING**MONUMENT RECORD**Corner ID: **Per_C07****Center 1/4 Corner**

Section 07- T08N-R01W, 2nd P.M.

Perry Township, Monroe County, Indiana



MONUMENT: Describe monument set or found (Include material type, scribing, distance above/below grade, dimensions.) 1 1/4 inch aluminum "Monroe County Surveyor" Cap set on 5/8" Rebar found, replacing missing Smith Neubecker & Associates "SNA" cap 0.4' above grade.

MONUMENT LOCATION SKETCH:**WITNESS MONUMENT TIES**

All ties to new Bearing Trees (BTs) are a mag nail set in a 1-1/2" plastic washer stamped "SURVEY MARKER - DO NOT REMOVE" and hack mark at the root crown (less than 12" above ground) perpendicular to the center of the tree, unless otherwise noted. BT diameters are noted as dbh and are measured approximately 4.5' above ground. Bearings are measured from the monument to the center of the BT, distances are measured from the monument to the mag nail.

ID	BEARING	DISTANCE	DESCRIPTION
Witness A	N 21d E	94.2'	5/8" Rebar with yellow cap reading "BRCJ INC 6892 IN" found flush to ground.
Witness B	N 2d W	88.4'	5/8" Rebar with yellow cap reading "BRCJ INC 6892 IN" found 0.1' below ground.
Witness C	N 9d E	8.69'	Mag Nail found on the northeast side of 4" x 4" post 0.5' above grade.
Witness D	N 86d0'0" W	11.6'	Cut "X" in 7" metal water valve lid.
Witness E	S 51d W	25.8'	Mag Nail with washer set 1' above grade on north side of 3" gate post.

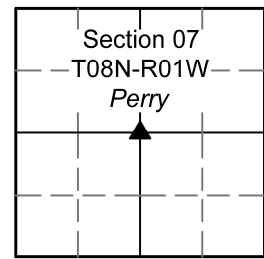
**OFFICE OF THE MONROE COUNTY SURVEYOR • Trohn Enright-Randolph**

119 W 7th Street, Bloomington, IN 47404 • 812-349-2570 • surveyorsoffice@co.monroe.in.us

Page 1 of 3

PENDING**MONUMENT RECORD**Corner ID: **Per_C07****Center 1/4 Corner**

Section 07- T08N-R01W, 2nd P.M.
 Perry Township, Monroe County, Indiana

**PHOTO IDENTIFIED:** *Photo Date:* 12/23/2021*Photo Orientation & Description:* Per_C07 from above*Photo Orientation & Description:* Per_C07 before cap was added*Photo Orientation & Description:* Per_C07 from east*Photo Orientation & Description:* Per_C07 from south**ORIGINAL OR SUBSEQUENT SURVEY EVIDENCE FOUND:** *Include, search area or areas, search procedure, etc.*

Date of Field work/Search: 12/14 12/22 12/23/2021 *By:* JG & TER *Monument Found:* 12/22 Rebar with yellow and pink tape *BTs or*

Reference Objects Found: *Project #:* Per_C07 *Field Book:* 54/38 *Equipment:* The basis of bearings is Grid North System

NAD83(2011)/Indiana West NAVD 88, Epoch 2010.0000, geoid12b_conus.db3, US Survey Feet, derived from GPS observations utilizing the Indiana Real-Time Network (INCORS). Coordinate data was collected with a Javad Triumph LS Network Rover.

Coordinates are available upon request. Distances to witness ties were collected with a Leica Disto laser distance meter. Bearings to witness ties were collected with the internal magnetic compass of the Javad Triumph LS and were automatically adjusted to grid north and are approximately shown hereon for reference. Priority should be given to provided distances over bearings. *Notes:* All witness photos on file in the Monroe County Surveyors Office.

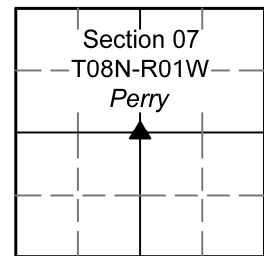
**OFFICE OF THE MONROE COUNTY SURVEYOR • Trohn Enright-Randolph**119 W 7th Street, Bloomington, IN 47404 • 812-349-2570 • surveyorsoffice@co.monroe.in.us

Page 2 of 3

**MONUMENT RECORD**Corner ID: **Per_C07****Center 1/4 Corner**

Section 07- T08N-R01W, 2nd P.M.

Perry Township, Monroe County, Indiana



OTHER EVIDENCE: *Describe corner location relative to nearby features and how to reach the corner location – note fences, roads, timber cutting lines, mow lines, clearings, plantings, streams, topo changes, etc.*

The monument is in a thicket of small trees that runs parallel to Weimer Road. There is a small drive that ends at a gate immediately as one turns west off of Weimer Road onto Wapehani Road on the south side of the road.

MONUMENT PRESERVATION: *Describe work done to preserve existing monument.*

“Protect Nearby Survey Marker” Sign was set on a metal post 6” north of monument. 1 ¼” aluminum “Monroe County Surveyor” cap set on found rebar. Determined five witnesses of varying types. Verified coordinates for monument and collected coordinates for three of the witnesses.

THEORY OF LOCATION: *Describe the theory of location for acceptance of this monument. Include monument origin and associated uncertainty.*

This monument’s location point was determined by using the Javad Triumph LS to extrapolate said point from the two rebar (Herein tied as Witnesses ‘A’ and ‘B’) set by Bledsoe Riggert Cooper James in the 2021 Survey by Michael Porter recorded as 2021021410.IN. The congruence of these three points shows that this is indeed the rebar that Mr. Porter holds as Per_C07.

The rebar was believed to be set by Smith Neubecker & Associates in an undetermined survey according to Letter ‘H’ in the report of survey by Ben E. Bledsoe and recorded as 2014004467. Mr. Bledsoe further states that this monument was held by surveys by: Jess A. Gwinn (1996) recorded as instrument 603426 in Survey Book 4 page 1, Phillip O. Tapp recorded as instrument 2003020472 and Phillip O. Tapp recorded as instrument 2010020032 in Survey Cabinet 2, envelope 35.

Instrument 2014004467 further confirms that Mr. Bledsoe holds this rebar as Per_C07, as the bearing direction and distance used intersect within 5 centimeters with Per_C09 to the south.

Historic research has not yet been performed to prove the validity of this monument.

CERTIFICATION:**OFFICE OF THE MONROE COUNTY SURVEYOR • Trohn Enright-Randolph**

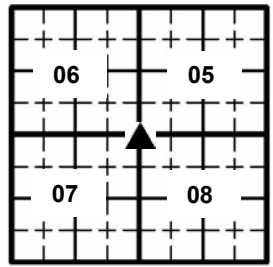
119 W 7th Street, Bloomington, IN 47404 • 812-349-2570 • surveyorsoffice@co.monroe.in.us

Page 3 of 3

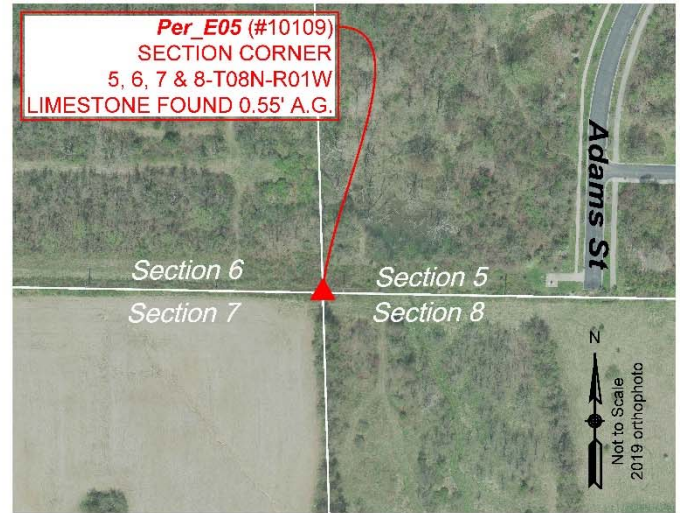
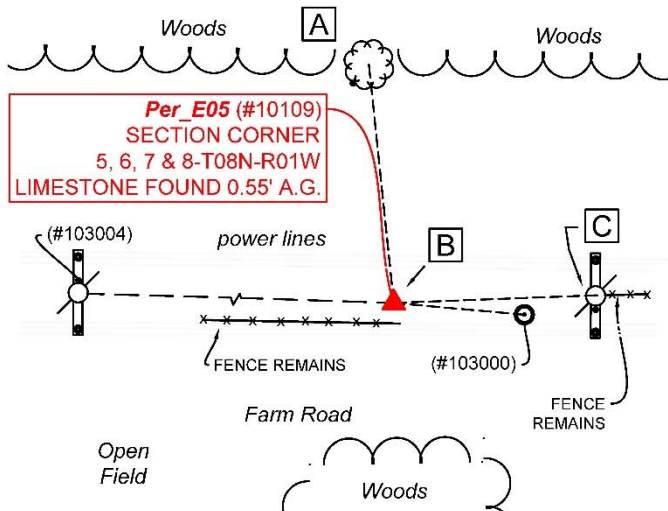
PENDING**MONUMENT RECORD**Corner ID: **Per_E05****Section Corner**

Sections 05, 06, 07 & 08- T08N-R01W, 2nd P.M.

Perry Township, Monroe County, Indiana



MONUMENT: Describe monument set or found (Include material type, scribing, distance above/below grade, dimensions.)
 0.33' x 0.33' Limestone found 0.55' above grade firmly in place.

MONUMENT LOCATION SKETCH:**WITNESS MONUMENT TIES**

All ties to new Bearing Trees (BTs) are a mag nail set in a 1-1/2" plastic washer stamped "SURVEY MARKER - DO NOT REMOVE" and hack mark at the root crown (less than 12" above ground) perpendicular to the center of the tree, unless otherwise noted. BT diameters are noted as dbh and are measured approximately 4.5' above ground. Bearings are measured from the monument to the center of the BT, distances are measured from the monument to the mag nail.

ID	BEARING	DISTANCE	DESCRIPTION
Witness A	N 6d W	37.3'	Mag nail and washer set in hack 0.5' above grade on the west side of a 6" osage-orange tree.
Witness B	N 0d W	0.5'	"Protect Nearby Survey Marker" sign found 3' above grade.
Witness C	N 88d E	31.8'	Mag nail found on south side of 15" power line pole 5.3' above grade. Power line pole detailed with metal plate with "1983" checked and another plate reading, "SB 12 UTILI MAP."
(#103000)	S 85d E	20.5'	Rebar with "Bynum Fanyo 29500010" cap found 0.5' above grade.
(#103004)	N 88d W	166.2'	Mag nail and washer set on north side of 15" power line pole 4.7' above grade. Power line pole detailed with metal plate reading "OSMOSE INSP. 2017" adjacent to a "T" plate and a third plate reading, "SB 12 UTILI MAP."

**OFFICE OF THE MONROE COUNTY SURVEYOR • Trohn Enright-Randolph**

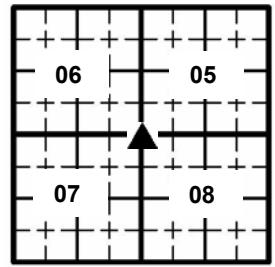
119 W 7th Street, Bloomington, IN 47404 • 812-349-2570 • surveyoroffice@co.monroe.in.us

Page 1 of 3

PENDING**MONUMENT RECORD**Corner ID: **Per_E05****Section Corner**

Sections 05, 06, 07 & 08- T08N-R01W, 2nd P.M.

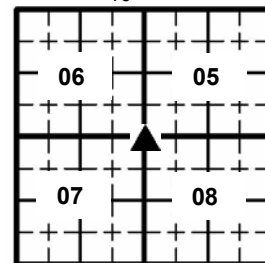
Perry Township, Monroe County, Indiana

**PHOTO IDENTIFIED:** *Photo Date:* 12/22/2021*Photo Orientation & Description:* Per_E05 from above*Photo Orientation & Description:* Per_E05 from north*Photo Orientation & Description:* Per_E05 from south*Photo Orientation & Description:* Per_E05 from east**OFFICE OF THE MONROE COUNTY SURVEYOR • Trohn Enright-Randolph**119 W 7th Street, Bloomington, IN 47404 • 812-349-2570 • surveyorsoffice@co.monroe.in.us

Page 2 of 3

**MONUMENT RECORD**Corner ID: **Per_E05****Section Corner**

Sections 05, 06, 07 & 08- T08N-R01W, 2nd P.M.
Perry Township, Monroe County, Indiana

**ORIGINAL OR SUBSEQUENT SURVEY EVIDENCE FOUND:** *Include, search area or areas, search procedure, etc.*

Date of Field work/Search: 12/22/2021 *By:* JG *Monument Found:* Limestone *BTs or Reference Objects Found:* Found Witnesses B, C, D & E from 10/2007 Monument Record *Project #:* Per_C07 *Field Book:* 54/39 & 54/45 *Equipment:* The basis of bearings is Grid North System NAD83(2011)/Indiana West NAVD 88, Epoch 2010.0000, geoid12b_conus.db3, US Survey Feet, derived from GPS observations utilizing the Indiana Real-Time Network (INCORS). Coordinate data was collected with a Javad Triumph LS Network Rover. Coordinates are available upon request. Distances to witness ties were collected with a Leica Disto laser distance meter. Bearings to witness ties were collected with the internal magnetic compass of the Javad Triumph LS and were automatically adjusted to grid north and are approximately shown hereon for reference. Priority should be given to provided distances over bearings. *Notes:* All witness photos on file in the Monroe County Surveyors Office.

OTHER EVIDENCE: *Describe corner location relative to nearby features and how to reach the corner location – note fences, roads, timber cutting lines, mow lines, clearings, plantings, streams, topo changes, etc.*

Monument is in a clearing of an electric line easement that runs east to west, north of a farm road and south of wooded area that contains many small creeks. The best way to access it is by taking Adams Street, south of Allen Street to where Adams Street ends. Looking west, one can follow the series of powerline poles to Per_E05. From Per_E05, looking south, on the east side there is a wooded area and on the west there is an open field.

MONUMENT PRESERVATION: *Describe work done to preserve existing monument.*

Coordinates were collected for the monument and for Witnesses #103000 & #103004. Two "Protect Nearby Survey Marker" signs already existed at this site in adequate condition. However, the sign on the wood post 12.5' south of the monument (Witness B on the 2007 Monument Record) was removed as to quell any ambiguity of the monuments true location.

THEORY OF LOCATION: *Describe the theory of location for acceptance of this monument. Include monument origin and associated uncertainty.*

The stone was previously witnessed by the Monroe County Surveyor, Kevin Enright, on May 23, 2005 and accepted by the Monroe County Surveyor Review Board on October 9, 2007. The 2007 Monument Record accepted the stone per a boundary survey by Douglas R. Curry archived by the Monroe County Surveyor as RSID003415. Historic research has not yet been performed to prove the validity of this monument.

CERTIFICATION:**OFFICE OF THE MONROE COUNTY SURVEYOR • Trohn Enright-Randolph**

119 W 7th Street, Bloomington, IN 47404 • 812-349-2570 • surveyoroffice@co.monroe.in.us

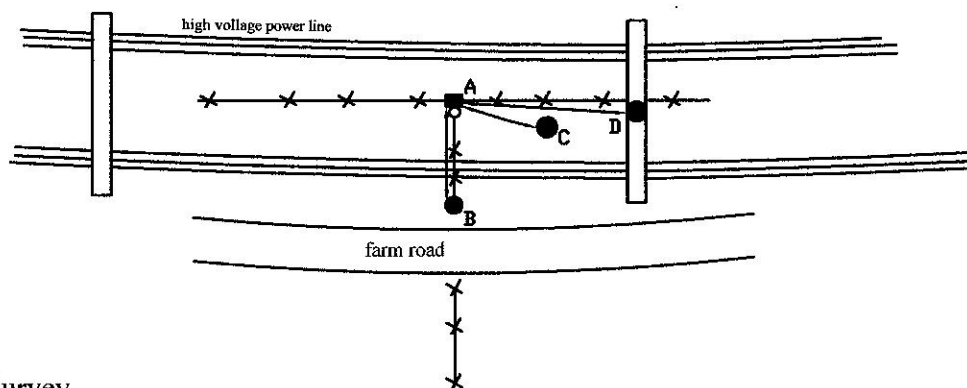
Page 3 of 3

Section: 05**Township:** 8 North**Range:** 1 West**Corner ID:** Per E-05

Monument Description & Remarks: Set Limestone, length 0.33ft, width 0.33ft, height 0.55ft.
Dug out old Monument (Rotted 10" diameter Post with PK nail in top). Survey Sign 4.5ft above ground at pt. B

References On File: Douglas R. Curry survey, Seminary (2004), on file in Surveyor Office

RECOVERY TIE DRAWING
Field Book 36 Page No. 42
Field Book 40 Page No. 6



A - Limestone

B - S 87° E 12.05' to Survey
Sign on 10" corner post

C - S 82° E 20.42' to 5/8" Rebar
with cap, "BYNUM FANYO"

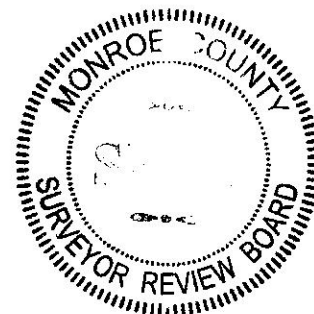
D - N 02° W 31.74' to MAG
nail in 15" power line pole

E - North 0,50' to Survey
Sign on metal fence post

Not To Scale
Compass Bearing Magnetic North

I, Kevin P. Enright, Monroe County Surveyor, hereby certify that this document was prepared under my direction in accordance with the provisions of section 20-2-2 of the Indiana Code; and the above data is given under my hand and seal this 23rd day of May, 2005.

Kevin P. Enright



Administered by the Monroe County Surveyor Review Board

Date: 10/9/2007

Drawn by: T.E.R Print date: July, 2007

PENDING**MONUMENT RECORD**Corner ID: **Per_E07****1/4 Corner**

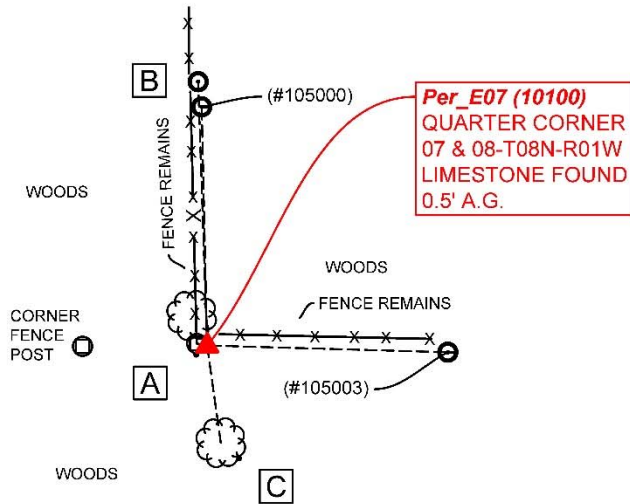
Sections 07 & 08- T08N-R01W, 2nd P.M.

Perry Township, Monroe County, Indiana

Section 07	Section 08
T08N-R01W	T08N-R01W
Perry	Perry

MONUMENT: Describe monument set or found (Include material type, scribing, distance above/below grade, dimensions.)

8" x 8" limestone with drill hole in center found 0.5' above grade.

MONUMENT LOCATION SKETCH:**WITNESS MONUMENT TIES**

All ties to new Bearing Trees (BTs) are a mag nail set in a 1-1/2" plastic washer stamped "SURVEY MARKER - DO NOT REMOVE" and hack mark at the root crown (less than 12" above ground) perpendicular to the center of the tree, unless otherwise noted. BT diameters are noted as dbh and are measured approximately 4.5' above ground. Bearings are measured from the monument to the center of the BT, distances are measured from the monument to the mag nail.

ID	BEARING	DISTANCE	DESCRIPTION
Witness A	N 79d W	2.2'	PK Nail found 2.2' above grade on south side of 7" fence corner post with a 31" maple tree growing around it and the fence.
Witness B	N 2d W	54.9'	Top center of "Park Boundary" sign.
Witness C	S 8d E	20.4'	Mag Nail with Washer set in lightly scarred spot on southeast side of 27" Maple Tree 0.9' above grade.
(#105000)	N 1d W	49.6'	Witness Stone 6"x6" with drill hole in center found 9" above grade, firmly in place.
(#105003)	S 88d E	50.1'	Witness Stone 6"x6" with drill hole in center found with drill hole 8" above grade, firmly in place.

**OFFICE OF THE MONROE COUNTY SURVEYOR • Trohn Enright-Randolph**

119 W 7th Street, Bloomington, IN 47404 • 812-349-2570 • surveyoroffice@co.monroe.in.us

Page 1 of 3

PENDING

MONUMENT RECORD

Corner ID: **Per_E07**

1/4 Corner

Sections 07 & 08- T08N-R01W, 2nd P.M.
Perry Township, Monroe County, Indiana

Section 07	Section 08
T08N-R01W	T08N-R01W
Perry	Perry

PHOTO IDENTIFIED: Photo Date: 11/12/2021



Photo Orientation & Description: Per_E07 from above



Photo Orientation & Description: Per_E07 from southwest



Photo Orientation & Description: Per_E07 from west



Photo Orientation & Description: Per_E07 from south

ORIGINAL OR SUBSEQUENT SURVEY EVIDENCE FOUND: Include, search area or areas, search procedure, etc.

Date of Field work/Search: 11/12/2021 By: JMG Monument Found: Limestone BTs or Reference bjects Found: Found a "Protect Nearby Survey Marker" sign 1.18' southeast from monument. A witness stone was found to the north (#105000). A witness stone was found to the east (#105003). A PK nail was found 2.2' above grade on the south side of a 7" fence post with a 31" maple tree twisted around it and the fence (Witness A). Also found from the 1996 Monument Record was the twin ash, dead and rotten on the west side yet still standing. The 12" maple was also found but dead and fallen. Project #: Per_C07 Field Book: 54/37 Equipment: The basis of bearings is Grid North System NAD83(2011)/Indiana West NAVD 88, Epoch 2010.0000, geoid12b_conus.db3, US Survey Feet, derived from GPS observations utilizing the Indiana Real-Time Network (INCORS). Coordinate data was collected with a Javad Triumph LS Network Rover. Coordinates are available upon request. Distances to witness ties were collected with a Leica Disto laser distance meter. Bearings to witness ties were collected with the internal magnetic compass of the Javad Triumph LS and were automatically adjusted to grid north and are approximately shown hereon for reference. Priority should be given to provided distances over bearings. Notes: All witness photos on file in the Monroe County Surveyors Office.



OFFICE OF THE MONROE COUNTY SURVEYOR • Trohn Enright-Randolph

119 W 7th Street, Bloomington, IN 47404 • 812-349-2570 • surveyoroffice@co.monroe.in.us

Page 2 of 3

PENDING

MONUMENT RECORD

Corner ID: **Per_E07**

1/4 Corner

Sections 07 & 08- T08N-R01W, 2nd P.M.

Perry Township, Monroe County, Indiana

Section 07 Section 08

T08N-R01W T08N-R01W

Perry Perry

OTHER EVIDENCE: Describe corner location relative to nearby features and how to reach the corner location – note fences, roads, timber cutting lines, mow lines, clearings, plantings, streams, topo changes, etc.

From Tapp Road, moving north on Adams Street, Adams Street dead ends into a wooded area. If one proceeds through the woods northeasterly along the angle of Adam's Street's continuance, the monument can be found. The witness stone on the east side of the monument is easy to spot and the fence it is close to runs westerly and directly to Per_E07. Summit Elementary School is directly southeast of the monument.

MONUMENT PRESERVATION: *Describe work done to preserve existing monument.*

Geodetic coordinates were captured for Per_E07 along with the north and east witness stones known herein as (#105000) and (#105003) respectively. The durability of "Protect Nearby Survey Marker" sign was assured. One new witness was set. And the monument stone was painted.

THEORY OF LOCATION: *Describe the theory of location for acceptance of this monument. Include monument origin and associated uncertainty.*

The stone was previously witnessed by the Monroe County Surveyor, Michael W. Friley, on January 31, 1996. References on File: Ben Bledsoe retracement survey for Harvey Sudbury (2014) on file in Recorder's Office (2014004467.IN) and Gary Kent survey, Bloomington Industrial Complex (2004), on file in the Recorder's Office (2004020621.IN). Historic research has not yet been performed to prove the validity of this monument.

CERTIFICATION:

OFFICE OF THE MONROE COUNTY SURVEYOR • Trohn Enright-Randolph

119 W 7th Street, Bloomington, IN 47404 • 812-349-2570 • surveyoroffice@co.monroe.in.us

Page 3 of 3

MONUMENT RECORD

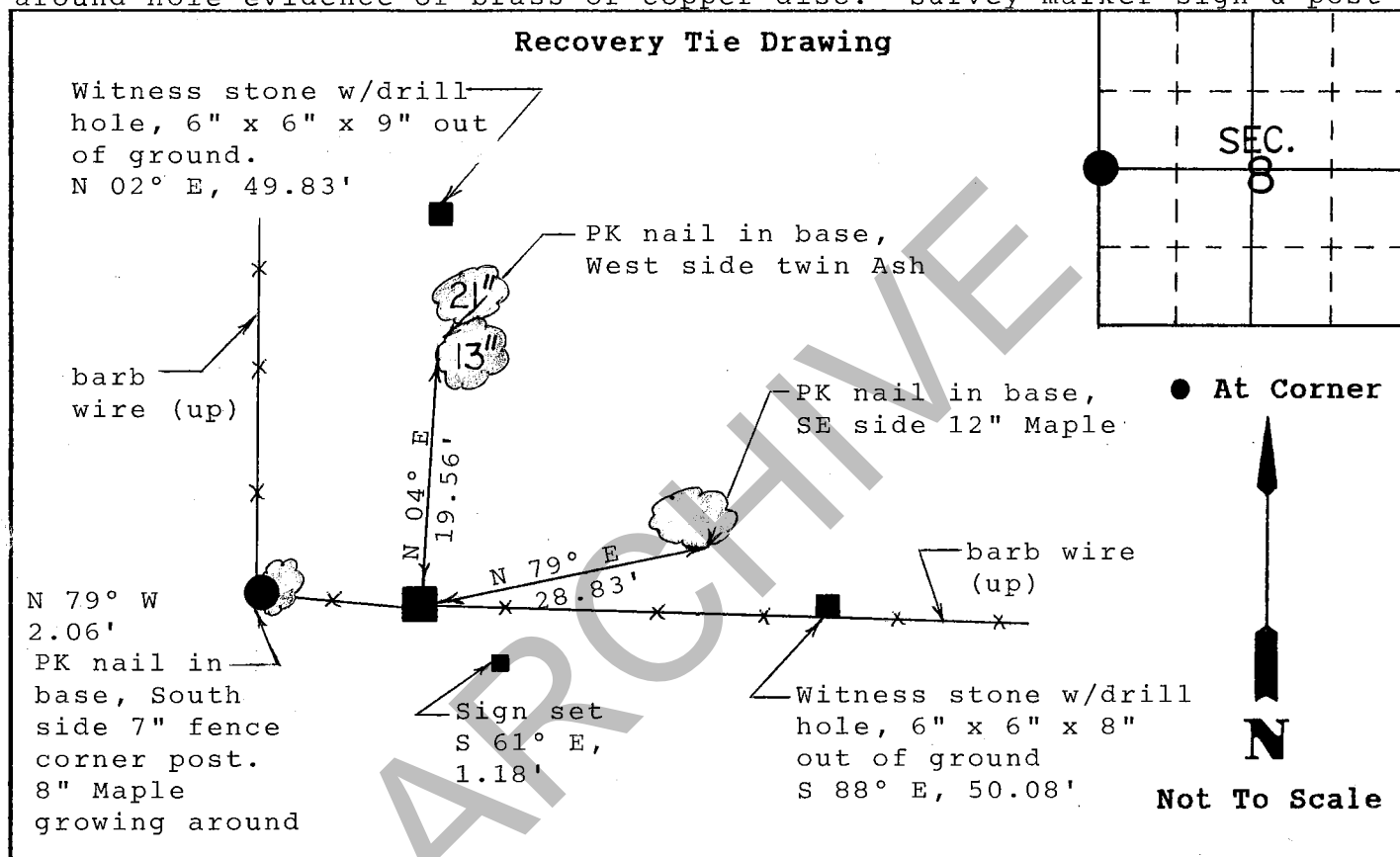
Corner I.D. #

E-7

STATE OF INDIANA - COUNTY OF MONROE

 Section Eight (8), Township 8 North, Range 1 West

Monument Description & Remarks: Found Limestone stone w/drill hole at West 1/4 corner. Stone is firmly in place, 8" x 8" x 6" out of ground, green around hole evidence of brass or copper disc. Survey marker sign & post set.



State of Indiana

 County of Monroe

Space
Reserved For
Recording
Officer

I, Michael W. Friley, County Surveyor, hereby certify that this document was prepared under my direction in accordance with the provisions of Section 17-3-64-4 through 17-3-64-8 of the Indiana Code, being Acts of 1965, Chapter 319; and the above data is given under my hand and seal this 31st day of January, 1996 A.D.

Indiana Registered Land Surveyor No. _____ or

Monroe County Surveyor's Office
United States Government Agency

Monroe County Surveyor
Title _____

Field Book:

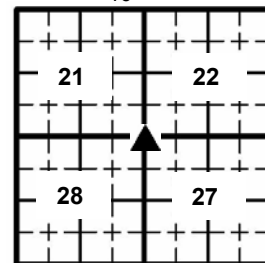
96-01

Page:

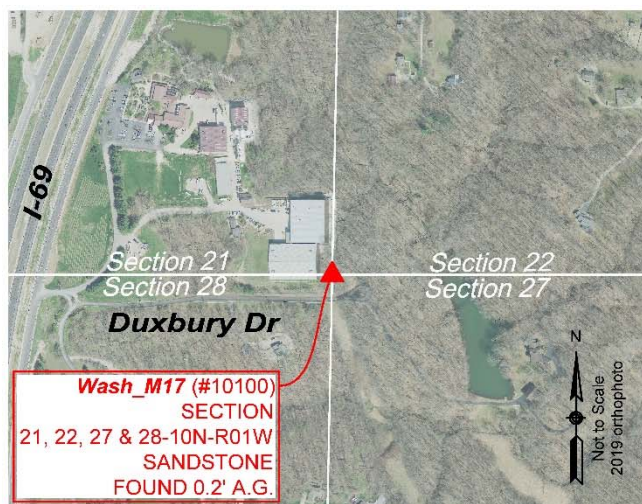
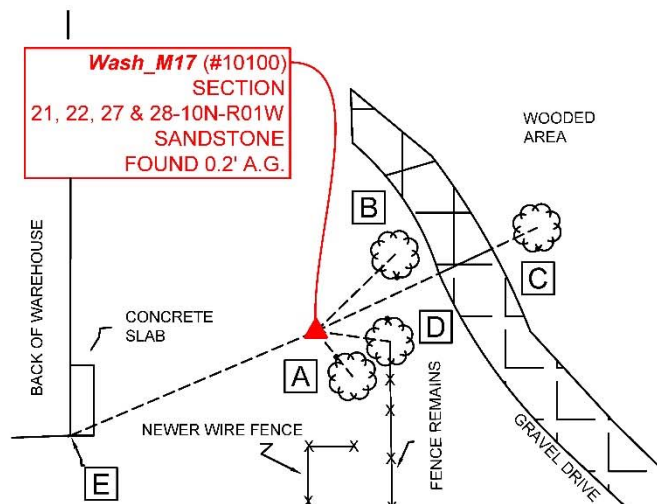
8

PENDING**MONUMENT RECORD**Corner ID: **Wash_M17****Section Corner**

Sections 21, 22, 27 & 28- T10N-R01W, 2nd P.M.
Washington Township, Monroe County, Indiana



MONUMENT: Describe monument set or found (Include material type, scribing, distance above/below grade, dimensions.)
Sandstone 0.25 x 0.75' with cut "X" retraced for clarity found 0.2' above grade firmly in ground.

MONUMENT LOCATION SKETCH:**WITNESS MONUMENT TIES**

All ties to new Bearing Trees (BTs) are a mag nail set in a 1-1/2" plastic washer stamped "SURVEY MARKER - DO NOT REMOVE" and hack mark at the root crown (less than 12" above ground) perpendicular to the center of the tree, unless otherwise noted. BT diameters are noted as dbh and are measured approximately 4.5' above ground. Bearings are measured from the monument to the center of the BT, distances are measured from the monument to the mag nail.

ID	BEARING	DISTANCE	DESCRIPTION
Witness A	S 39d E	12.3'	Mag nail with washer set in hack 0.8' above grade on the northwest side of a found 134" twin smooth bark hickory.
Witness B	N 46d E	23.4'	Mag nail with washer set in hack 0.9' above grade on the south side of 60" smooth bark hickory tree.
Witness C	N 65d E	52.0'	Mag nail with washer set in hack 0.6' above grade on the south side of a 24" American beech tree.
Witness D	S 82d E	15.9'	Mag nail with washer set in hack 0.9' above grade on the north side of 16" shagbark hickory with the remains of barbwire fence embedded in it.
Witness E	S 67d W	57.4'	Southeast corner of Oliver Winery warehouse where metal wall meets concrete base 3.33' above concrete patio.



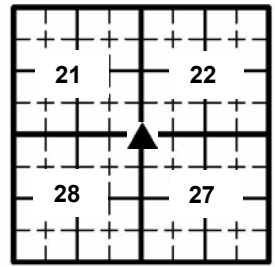
OFFICE OF THE MONROE COUNTY SURVEYOR • Trohn Enright-Randolph

119 W 7th Street, Bloomington, IN 47404 • 812-349-2570 • surveyoroffice@co.monroe.in.us

Page 1 of 3

PENDING**MONUMENT RECORD**Corner ID: **Wash_M17****Section Corner**

Sections 21, 22, 27 & 28- T10N-R01W, 2nd P.M.
Washington Township, Monroe County, Indiana

**PHOTO IDENTIFIED:** *Photo Date: 1/12/2022*

Wash_M17 from above

*Photo Orientation & Description:* Wash_M17 from east*Photo Orientation & Description:* Wash_M17 from north*Photo Orientation & Description:* Wash_M17 from south**ORIGINAL OR SUBSEQUENT SURVEY EVIDENCE FOUND:** *Include, search area or areas, search procedure, etc.*

Date of Field work/Search: 1/12/2022 *By:* JMG *Monument Found:* Found Sandstone with cut "X" *BTs or Reference Objects Found:* Witness A not named with a letter in the 1993 Monument Record but known as "30" twin Smooth Bark Hickory." And Witness B, also not named in the 1993 Monument Record but known as "12" Smooth Bark Hickory." No PK nails were found. These opinions were rendered based on the type of tree, the bearings and distances from the stone and the growth that could have occurred in each tree. *Project #:* Washington Monuments *Field Book:* 54/40 *Equipment:* The basis of bearings is Grid North System NAD83(2011)/Indiana West NAVD 88, Epoch 2010.0000, geoid12b_conus.db3, US Survey Feet, derived from GPS observations utilizing the Indiana Real-Time Network (INCORS). Coordinate data was collected with a Javad Triumph LS Network Rover. Coordinates are available upon request. Distances to witness ties were collected with a Leica Disto laser distance meter. Bearings to witness ties were collected with the internal magnetic compass of the Javad Triumph LS and were automatically adjusted to grid north and are approximately shown hereon for reference. Priority should be given to provided distances over bearings. *Notes:* All witness photos on file in the Monroe County Surveyors Office.

**OFFICE OF THE MONROE COUNTY SURVEYOR • Trohn Enright-Randolph**

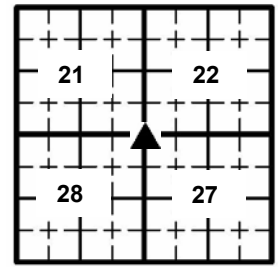
119 W 7th Street, Bloomington, IN 47404 • 812-349-2570 • surveyorsoffice@co.monroe.in.us

Page 2 of 3

**MONUMENT RECORD**Corner ID: **Wash_M17****Section Corner**

Sections 21, 22, 27 & 28- T10N-R01W, 2nd P.M.

Washington Township, Monroe County, Indiana



OTHER EVIDENCE: *Describe corner location relative to nearby features and how to reach the corner location – note fences, roads, timber cutting lines, mow lines, clearings, plantings, streams, topo changes, etc.*

The monument was found on a small hill east of a clearing and a drainage ditch running north-south on the east side of a warehouse built for Oliver Winery in 2016. Before Duxbury Drive terminates at a cul-de-sac, there is a rugged eight foot in width gravel drive off of the north side of the road that curves northwest toward the back of the winery warehouses. The monument can be found approximately halfway down this drive and then directly west.

MONUMENT PRESERVATION: *Describe work done to preserve existing monument.*

A "Protect Nearby Survey Marker" was set six inches north of the stone at three feet above grade. Geodetic coordinates were taken for the monument and for the warehouse's southeast corner. The cut "X" was reemphasized for clarity and functionality. The stone was tested with acid to determine it's type. New witnesses were set to replace the ones destroyed by time and construction.

THEORY OF LOCATION: *Describe the theory of location for acceptance of this monument. Include monument origin and associated uncertainty.*

The stone was previously witnessed by the Monroe County Surveyor, Michael Friley, on October 8, 1993. References on File: Michael E. Sheppard survey for The Lands of Raymond Saidah (2011) on file at the Surveyor's Office as RSID003974. Also: Tracy L. McGill's survey Location Control Route Survey Plat Proposed I-69 Section 5 Segment 4 (2013) on file at the Recorder's Office as 2013015455.IN. Historic research has not yet been performed to prove the validity of this monument.

CERTIFICATION:

DRAFT

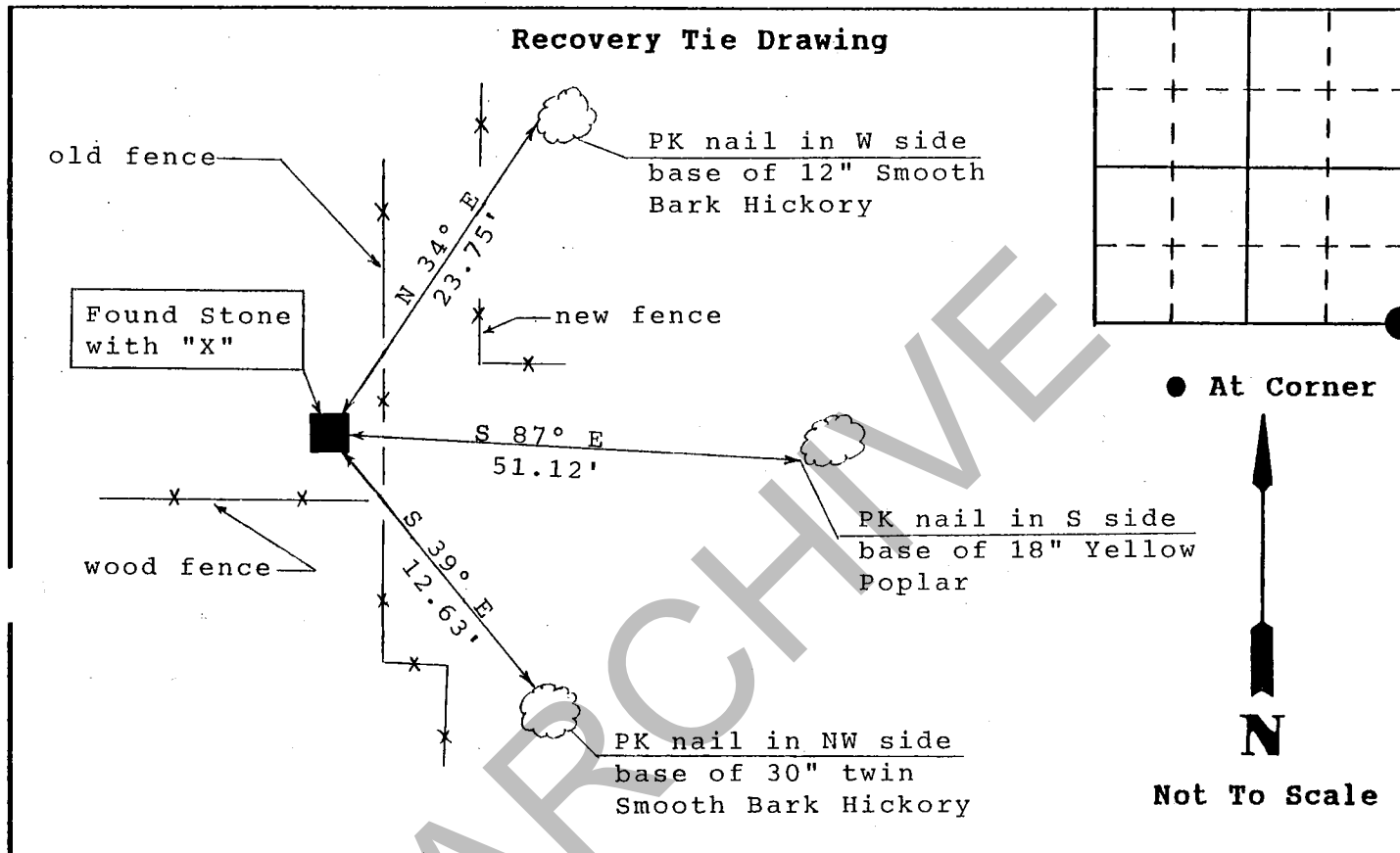
**OFFICE OF THE MONROE COUNTY SURVEYOR • Trohn Enright-Randolph**119 W 7th Street, Bloomington, IN 47404 • 812-349-2570 • surveyorsoffice@co.monroe.in.us

Page 3 of 3

STATE OF INDIANA - COUNTY OF MONROE

Section Twenty-one, 21, Township 10 North, Range 1 West

Monument Description & Remarks: SE Corner of Section - Found Stone with
"X", 0.25' x 0.75' x 0.2' out of ground. Stone is firm in ground.



State of Indiana
 County of Monroe

Space
 Reserved For
 Recording
 Officer

I, Michael W. Friley, hereby certify
 that this document was prepared under my direction in
 accordance with the provisions of Section 17-3-64-4
 through 17-3-64-8 of the Indiana Code, being Acts of 1965,
 Chapter 319; and the above data is given under my hand and
 seal this 8th day of October, 1993 A.D.

Indiana Registered Land Surveyor No. _____ or
Monroe County Surveyor's Office
 United States Government Agency

Monroe County Surveyor
 title

Field Book:

93-01

Page:

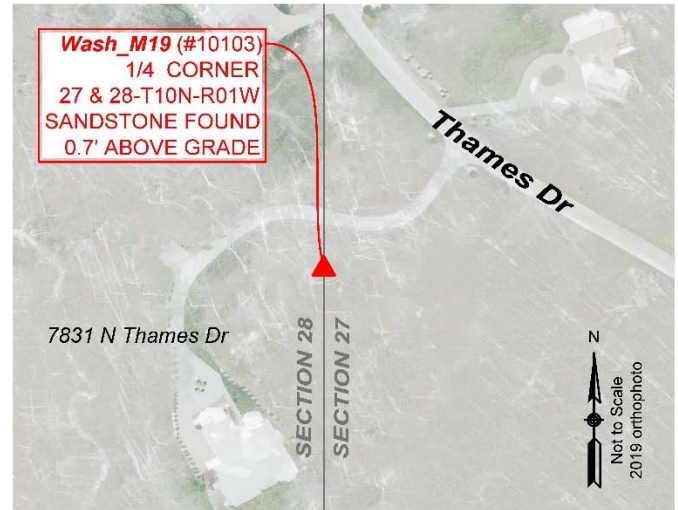
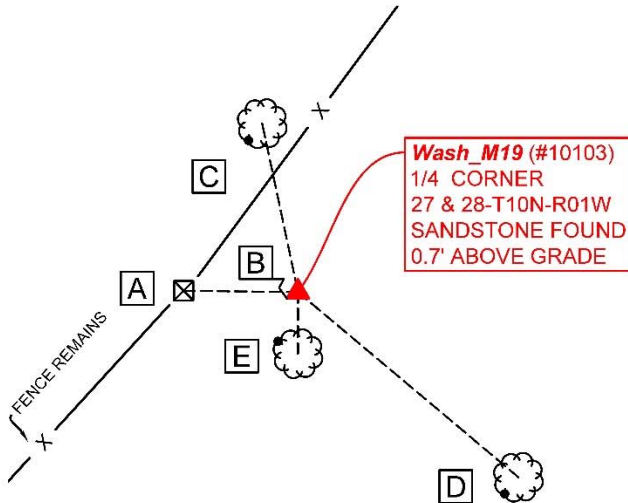
15

PENDING**MONUMENT RECORD**Corner ID: **Wash_M19****1/4 Corner**

Sections 27 & 28- T10N-R01W, 2nd P.M.
Washington Township, Monroe County, Indiana

Section 28	Section 27
T10N-R01W	T10N-R01W
Washington	Washington

MONUMENT: Describe monument set or found (Include material type, scribing, distance above/below grade, dimensions.)
Found 0.44' x 0.40' Sandstone with cut "X" retraced for clarity 0.72' above grade.

MONUMENT LOCATION SKETCH:**WITNESS MONUMENT TIES**

All ties to new Bearing Trees (BTs) are a mag nail set in a 1-1/2" plastic washer stamped "SURVEY MARKER - DO NOT REMOVE" and hack mark at the root crown (less than 12" above ground) perpendicular to the center of the tree, unless otherwise noted. BT diameters are noted as dbh and are measured approximately 4.5' above ground. Bearings are measured from the monument to the center of the BT, distances are measured from the monument to the mag nail.

ID	BEARING	DISTANCE	DESCRIPTION
Witness A	N 89d W	11.9'	Cut "X" on top of an irregular shaped limestone formation that is well set in a shallow gorge that runs along the ruins of a downed wire fence line 0.6' above grade.
Witness B	S 25d W	0.7'	"Protect Nearby Survey Marker" sign found 4.6' above grade wired to metal fence post.
Witness C	N 12d W	17.9'	Found signal for possible mag nail in 40" sugar maple tree. Set a mag nail and washer in hacked southwest side of tree 1.1' above grade.
Witness D	S 50d E	30.0'	Mag nail and washer set in hack 0.6' above grade in the southwest side of a 24" sugar maple tree.
Witness E	S 0d E	6.4'	Mag nail and washer set in hack 0.7' above grade in northwest side of 9" sugar maple tree.

**OFFICE OF THE MONROE COUNTY SURVEYOR • Trohn Enright-Randolph**

119 W 7th Street, Bloomington, IN 47404 • 812-349-2570 • surveyoroffice@co.monroe.in.us

Page 1 of 3

PENDING**MONUMENT RECORD**Corner ID: **Wash_M19****1/4 Corner**

Sections 27 & 28- T10N-R01W, 2nd P.M.
Washington Township, Monroe County, Indiana

Section 28	Section 27
T10N-R01W	T10N-R01W
Washington	Washington

PHOTO IDENTIFIED: Photo Date: 01/12/2022

Photo Orientation & Description: Wash_M19 from above



Photo Orientation & Description: Looking south at Wash_M19



Photo Orientation & Description: Looking west at Wash_M19



Photo Orientation & Description: Looking north at Wash_M19

ORIGINAL OR SUBSEQUENT SURVEY EVIDENCE FOUND: Include, search area or areas, search procedure, etc.

Date of Field work/Search: 01/12/2022 By: JMG Monument Found: Sandstone with cut "X" BTs or Reference Objects Found: Witness B a "Protect Nearby Survey Marker" sign was found. And Witness C a 40" sugar maple tree was found Project #: Washington Monuments Field Book: 54/41 Equipment: The basis of bearings is Grid North System NAD83(2011)/Indiana West NAVD 88, Epoch 2010.0000, geoid12b_conus.db3, US Survey Feet, derived from GPS observations utilizing the Indiana Real-Time Network (INCORS). Coordinate data was collected with a Javad Triumph LS Network Rover. Coordinates are available upon request. Distances to witness ties were collected with a Leica Disto laser distance meter and tape. Bearings to witness ties were collected with the internal magnetic compass of the Javad Triumph LS and were automatically adjusted to grid north and are approximately shown hereon for reference. Priority should be given to provided distances over bearings. Notes: All witness photos on file in the Monroe County Surveyors Office.

**OFFICE OF THE MONROE COUNTY SURVEYOR • Trohn Enright-Randolph**

119 W 7th Street, Bloomington, IN 47404 • 812-349-2570 • surveyorsoffice@co.monroe.in.us

Page 2 of 3

PENDING

MONUMENT RECORD

Corner ID: **Wash_M19**

1/4 Corner

Sections 27 & 28- T10N-R01W, 2nd P.M.
Washington Township, Monroe County, Indiana

Section 28 Section 27
T10N-R01W T10N-R01W
Washington *Washington*

OTHER EVIDENCE: Describe corner location relative to nearby features and how to reach the corner location – note fences, roads, timber cutting lines, mow lines, clearings, plantings, streams, topo changes, etc.

Monument was found cradled in a topological recess between North Thames Drive and the homestead a 7831 N Thames Dr, in a wooded area that was well maintained. The "Protect Nearby Survey Marker" sign was reattached carefully with wire in a manner that suggest respect for the monument. A magnetic signal was found in Witness C but I did not dig for mag nail.

MONUMENT PRESERVATION: *Describe work done to preserve existing monument.*

The integrity of the “Protect Nearby Survey Marker” sign was checked. The residents of the property were made aware of the monument. Geodetic coordinates were gathered for the monument and for Witness A, a cut “X” was set in a large limestone formation that rested in a recess that followed a downed barbwire fence that ran towards the house from North Thames Drive. The cut “X” in the monument was reemphasized for clarity and functionality.

THEORY OF LOCATION: *Describe the theory of location for acceptance of this monument. Include monument origin and associated uncertainty.*

The stone was previously witnessed by the Monroe County Surveyor, Kevin Enright, on July 3rd, 2008 and accepted by the Monroe County Surveyor Review Board on August 12, 2008. The 2008 Monument Record accepted the stone per Legal Survey Book 2 Page 414, survey (1885) on file in the Surveyor's Office. Other References on file include a Tracy L. McGill survey, Location Control Route Survey Plat Proposed I-69 Section 5 Segment 4 (2013) on file in the Recorder's Office (IN2013015455.IN). Historic research has not yet been performed to prove the validity of this monument.

CERTIFICATION:

OFFICE OF THE MONROE COUNTY SURVEYOR • Trohn Enright-Randolph

119 W 7th Street, Bloomington, IN 47404 • 812-349-2570 • surveyoroffice@co.monroe.in.us

Page 3 of 3

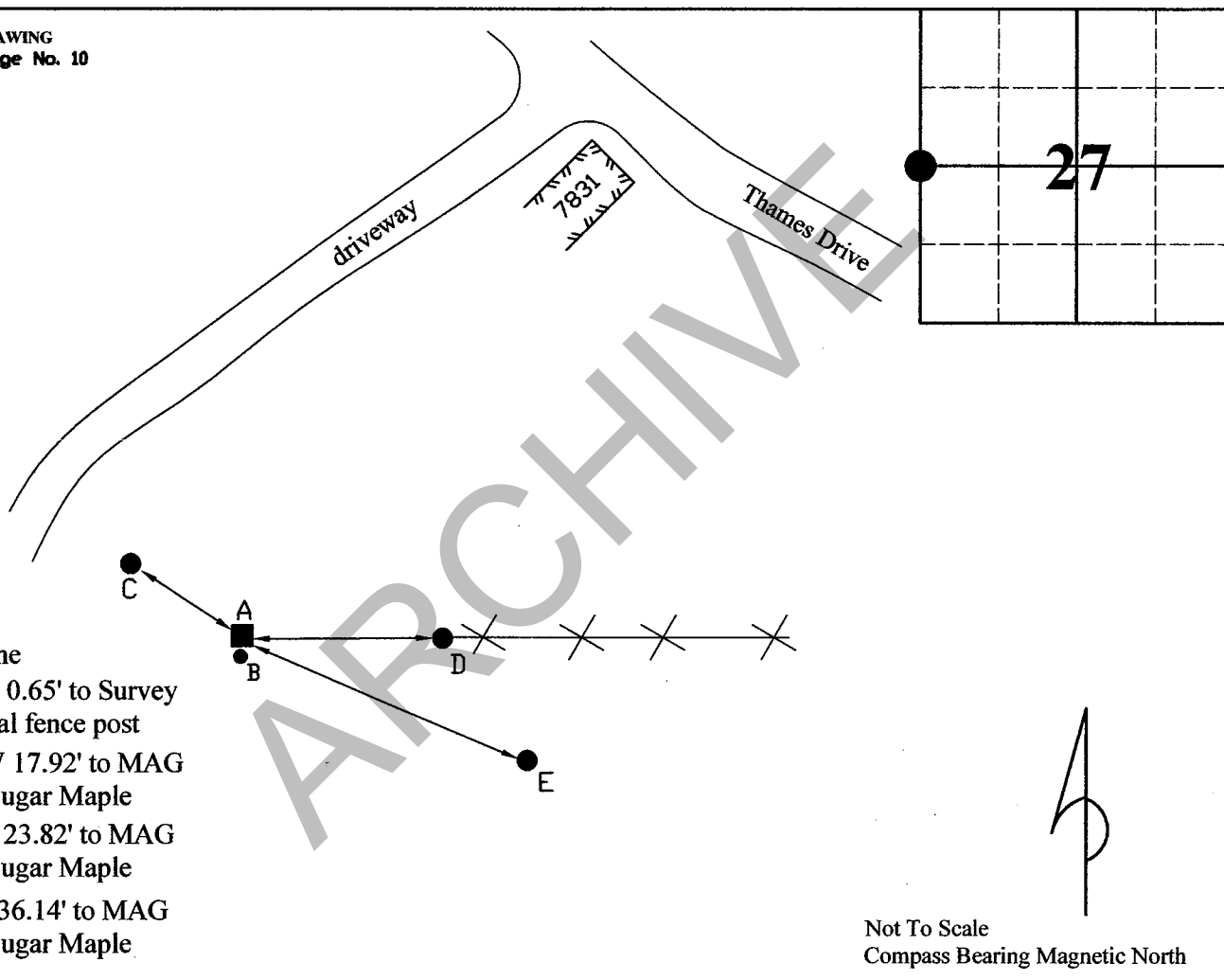
MONUMENT RECORD
State of Indiana - County of Monroe

Section: 27**Township: 10 North****Range: 1 West****Corner ID: Wash M-19**

Monument Description & Remarks: Sandstone with "X", length 0.44ft, width 0.40ft, height 0.72ft. Survey Sign 5ft above ground at pt. B

References On File: Legal Survey book 2 page 414, survey (1885), on file in Surveyor Office

RECOVERY TIE DRAWING
Field Book 41 Page No. 10



I, Kevin P. Enright, Monroe County Surveyor, hereby certify that this document was prepared under my direction in accordance with the provisions of section 36-2-12-11 of the Indiana Code; and the above data is given under my hand and seal this 3rd day of July, 2008.



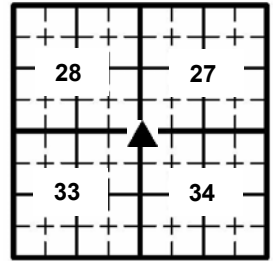
Administered by the Monroe County Surveyor Review Board

Date: 8-12-08

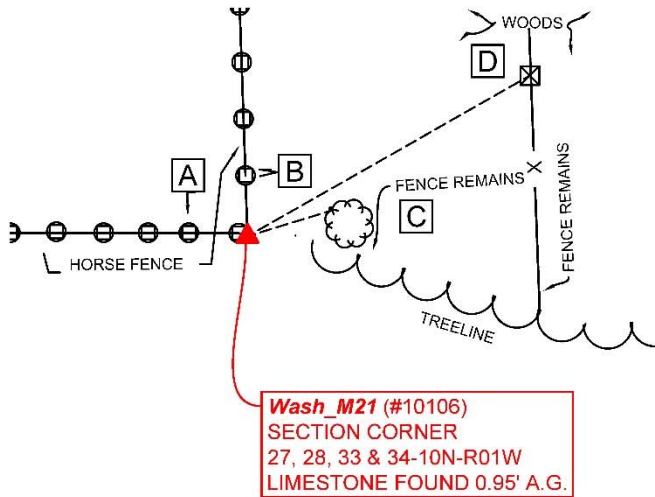
Drawn by: T.E.R. Print date: August 7, 2008

PENDING**MONUMENT RECORD**Corner ID: **Wash_M21****Section Corner**

Sections 27, 28, 33 & 34- T10N-R01W, 2nd P.M.
Washington Township, Monroe County, Indiana



MONUMENT: Found Limestone 0.95' above grade, 0.32' x 0.32' securely in ground with cut "X" retraced for clarity.

MONUMENT LOCATION SKETCH:**WITNESS MONUMENT TIES**

All ties to new Bearing Trees (BTs) are a mag nail set in a 1-1/2" plastic washer stamped "SURVEY MARKER - DO NOT REMOVE" and hack mark at the root crown (less than 12" above ground) perpendicular to the center of the tree, unless otherwise noted. BT diameters are noted as dbh and are measured approximately 4.5' above ground. Bearings are measured from the monument to the center of the BT, distances are measured from the monument to the mag nail.

ID	BEARING	DISTANCE	DESCRIPTION
Witness A	N 70d W	2.0'	Center peak of a 4" x 8" concrete fence post, with slots securing wood plans and reinforced by steel cable.
Witness B	N 2d W	10.9'	South face and peak of a 4" x 8" concrete fence post, with slots securing wood planks and reinforced by steel cable.
Witness C	N 73d E	18.9'	Mag nail with washer set in hack on northwest side of a 13" northern hackberry tree 0.6' above grade.
Witness D	N 60d E	68.9'	Cut "X" in the center of an irregular shaped limestone formation that rests securely in a gorge that ran along a downed woven fence.



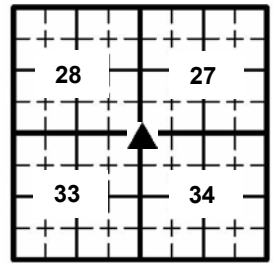
OFFICE OF THE MONROE COUNTY SURVEYOR • Trohn Enright-Randolph

119 W 7th Street, Bloomington, IN 47404 • 812-349-2570 • surveyoroffice@co.monroe.in.us

Page 1 of 3

PENDING**MONUMENT RECORD**Corner ID: **Wash_M21****Section Corner**

Sections 27, 28, 33 & 34- T10N-R01W, 2nd P.M.
Washington Township, Monroe County, Indiana

**PHOTO IDENTIFIED:** *Photo Date:* 01/18/2022*Photo Orientation & Description:* Wash_M21 from above*Photo Orientation & Description:* Wash_M21 from south*Photo Orientation & Description:* Wash_M21 from west*Photo Orientation & Description:* Wash_M21 from east**OFFICE OF THE MONROE COUNTY SURVEYOR • Trohn Enright-Randolph**119 W 7th Street, Bloomington, IN 47404 • 812-349-2570 • surveyorsoffice@co.monroe.in.us

Page 2 of 3

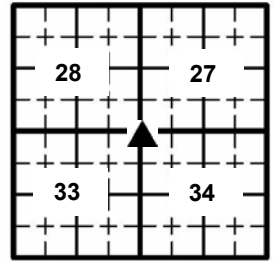


MONUMENT RECORD

Corner ID: **Wash_M21**

Section Corner

Sections 27, 28, 33 & 34- T10N-R01W, 2nd P.M.
Washington Township, Monroe County, Indiana



ORIGINAL OR SUBSEQUENT SURVEY EVIDENCE FOUND: *Include, search area or areas, search procedure, etc.*

Date of Field work/Search: 1/18/2022 *By:* J.M.G. *Monument Found:* Limestone with cut "X" *BTs or Reference Objects Found:* Found Witnesses B & C from 1998 Monument Record = Witnesses A & B above *Project #:* Washington Monuments *Field Book:* 54/42
Equipment: The basis of bearings is Grid North System NAD83(2011)/Indiana West NAVD 88, Epoch 2010.0000, geoid12b_conus.db3, US Survey Feet, derived from GPS observations utilizing the Indiana Real-Time Network (INCORS). Coordinate data was collected with a Javad Triumph LS Network Rover. Coordinates are available upon request. Distances to witness ties were collected with a Leica Disto laser distance meter and with a measuring tape. Bearings to witness ties were collected with the internal magnetic compass of the Javad Triumph LS and were automatically adjusted to grid north and are approximately shown hereon for reference. Priority should be given to provided distances over bearings. *Notes:* All witness photos on file in the Monroe County Surveyors Office.

OTHER EVIDENCE: *Describe corner location relative to nearby features and how to reach the corner location – note fences, roads, timber cutting lines, mow lines, clearings, plantings, streams, topo changes, etc.*

Monument was found east of the intersection of two longstanding concrete posts supported horse fences at the back (north end) of the 281 East Sample Road homestead.

MONUMENT PRESERVATION: *Describe work done to preserve existing monument.*

The cut "X" was reemphasized for clarity and the functionality of the monument. Geodetic coordinates were captured for the monument and for Witness D

THEORY OF LOCATION: *Describe the theory of location for acceptance of this monument. Include monument origin and associated uncertainty.*

The stone was previously witnessed by the Monroe County Surveyor, Kevin Enright, on November 17, 1998 and accepted by the Monroe County Surveyor Review Board on November 17, 1998. The 1998 Monument Record accepted the stone per a preliminary plat for Kaye-Lee by Douglas Curry. References on File: A 2011 survey for the lands of Raymond Saidah by Michael Sheppard can be found in the Monroe County Surveyor's Office under the survey ID Number of RSID003974. Also: a Location Route Survey Plat Proposed I-69 Section 5 Segment 4 (2013) on file in the Recorder's Office (2013015455.IN). Historic research has not yet been performed to prove the validity of this monument.

CERTIFICATION:



OFFICE OF THE MONROE COUNTY SURVEYOR • Trohn Enright-Randolph

119 W 7th Street, Bloomington, IN 47404 • 812-349-2570 • surveyoroffice@co.monroe.in.us

Page 3 of 3

MONUMENT RECORD

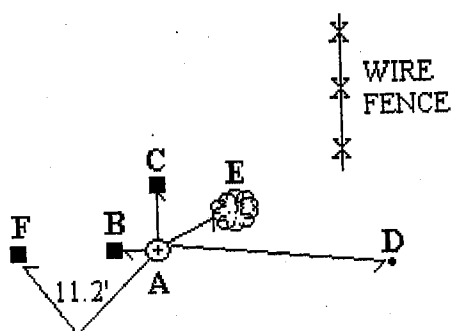
Corner I.D. #
WASHINGTON
M - 21

STATE OF INDIANA - COUNTY OF MONROE

Section 33, Township 10 NORTH, Range 1 WEST

Monument Description & Remarks: LIMESTONE WITH "+"

Recovery Tie Drawing



- A. LIMESTONE WITH "+"
- B. 4"x8" CONCRETE POST N72°W, DIST 198'
- C. 4"x8" CONCRETE POST N02°W, DIST 10.45'
- D. 1 1/4" IRON PIPE-13' AG S86°E, DIST 87.25'
- E. 36" DEAD MAPLE N65°E, DIST 6.95'
- F. 4"x8" CONCRETE POST N74°W, DIST 11.2'

● At Corner



Not To Scale

State of Indiana

County of MONROE

I, STEVEN V. FARKAS, hereby certify that this document was prepared under my direction in accordance with the provisions of Section 17-3-64-4 through 17-3-64-8 of the Indiana Code, being Acts of 1965, Chapter 319; and the above data is given under my hand and seal this _____ day of _____, 20____ A.D.

Indiana Registered Land Surveyor No. _____ or

United States Government Agency _____

Title _____

Space
Reserved For
Recording
Officer

Field Book:

Page:

MONUMENT RECORD **State of Indiana - County of Monroe**

Section: 33**Township: 10 North****Range: 1 West****Corner ID: Wash M-21**

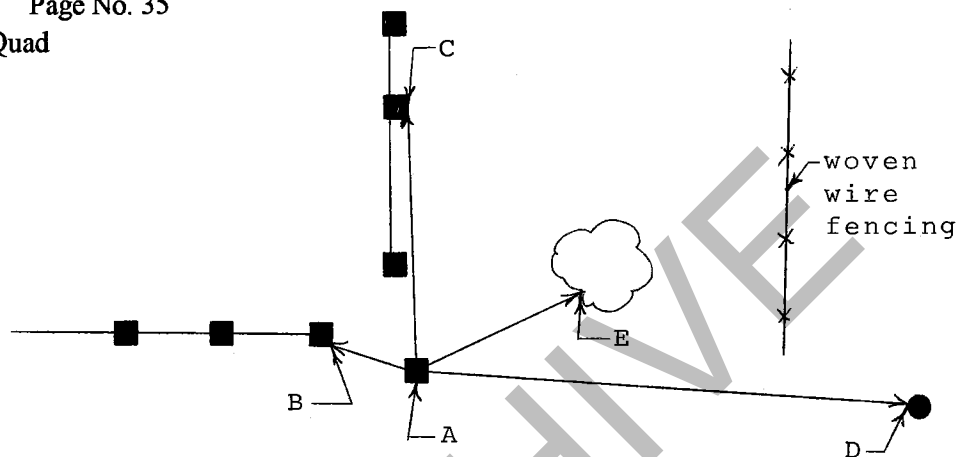
Monument Description & Remarks: Found tapered Limestone with "+" at NE corner of section. Limestone measured 0.95' x 0.32' x 0.32' out of ground. Survey marker set 3' up on tree, 1' North of stone.

References on file in the County Surveyor's Office: Preliminary Plat for Kaye-Lee Subdivision prepared by Douglas Curry RLS No. 890006.

RECOVERY TIE DRAWING

Field Book 98-02 Page No. 35

USGS Modesto Quad



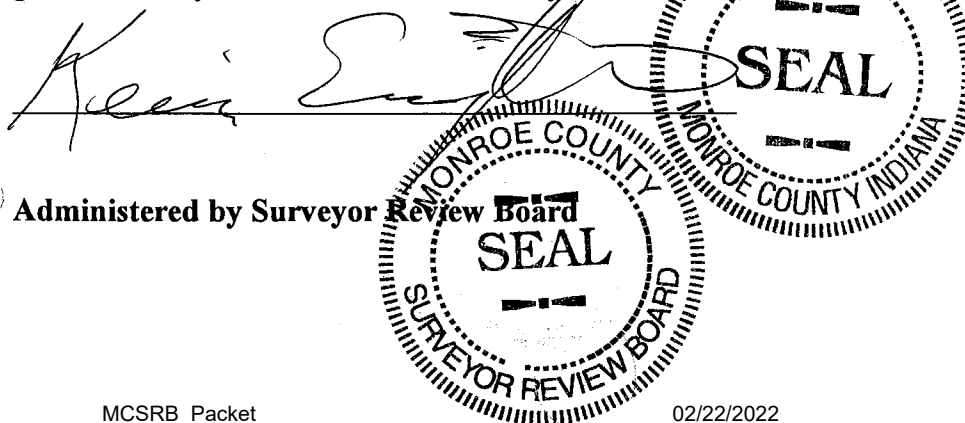
A - Limestone with "+"

B - North 72° West, 1.98' from stone
Chisled "+" in 4" x 8" concrete postC - North 02° West, 10.45' from stone
Chisled "+" in 4" x 8" concrete postD - South 86° East, 87.25' from stone
1 1/4" o.d. iron pipe. 1.3' out of groundE - North 65° East, 6.95' from stone
36" dead Maple

Not To Scale

Compass Bearing Magnetic North

I, Kevin P. Enright, Monroe County Surveyor, hereby certify that this document was prepared under my direction in accordance with the provisions of Section 30, Article 10 of the Indiana Code; and the above data is given under my hand and seal this 17th day of November, 1998.



Administered by Surveyor