



Office of the Monroe County Surveyor
Trohn Enright-Randolph

Health Services Building
119 West 7th Street
Bloomington, IN 47404
Phone: (812) 349-2570
surveyorsoffice@co.monroe.in.us

AGENDA
SURVEYOR REVIEW BOARD
REGULAR MEETING
Via Zoom App
Thursday, October 28, 2021

- I. Call to Order**
- II. Approval of agenda**
- III. Approval of meeting minutes from March 2021**
- IV. New Business**
 - a. Office Update**
- V. Certification of corners: BeBl_C05, BeBl_W05, BeBl_I25, Rich_I01, InCr_A11**
- VI. Public input**
- VII. Adoption of next meeting date**
- VIII. Adjournment**

Zoom Meeting Information

<https://monroecounty-in.zoom.us/j/83719713607?pwd=aS9rbldFY2RCRUZlQjlhenVpb09qUT09>

Meeting ID: 837 1971 3607
Password: 465055

The meeting is open to the public. Dates are subject to change.

For additional information, please call the Office of the Monroe County Surveyor at (812) 349-2570.

Anyone who requires an auxiliary aid or service for effective communication, or a modification of policies or procedures to participate in a program, service, or activity of Monroe County, should contact Monroe County Title VI Coordinator, (812) 349-2553, as soon as possible but no later than forty-eight (48) hours before the scheduled event.

Individuals requiring special language services should, if possible, Government Title VI Coordinator at least seventy-two (72) hours prior to the date on which the services will be needed.

Survey Utility



**MINUTES
SURVEYOR REVIEW BOARD
REGULAR MEETING
Via Zoom App
MARCH 23 2021**

MEMBERS PRESENT: Rachel Oser, Todd Borgman, Eric Deckard

MEMBERS ABSENT: Phil Tapp

STAFF: Donna Barbrick (Secretary), Trohn Enright-Randolph (County Surveyor), Cassidy Raley (Survey Technician), Hans Kelson (Technical Services)

CALL TO ORDER: Trohn Enright-Randolph called the meeting to order.

APPROVAL OF AGENDA: Eric Deckard seconded the motion. **VOTE BY ROLL CALL:** Deckard, Oser, Borgman AYE. Motion passed unanimously.

APPROVAL OF MINUTES FROM NOVEMBER 2020. Borgman motioned to approve and Deckard seconded. **VOTE:** Deckard, Borgman YES. Minutes approved.

APPROVAL OF MINUTES FROM JANUARY 2021. Oser motioned to approve January 2021. Borgman seconded. **VOTE:** Borgman, Deckard, Oser YES. Motion approved.

OLD BUSINESS

Scriveners errors. Trohn said from time to time we find scriveners errors. He said we will bring those to you just to make sure that we are on the same page. He said we feel it is better to bring the board into these discussions.

Adding notes on official tiesheets. Trohn said we have been reviewing plats since 2016 or 2017 to make sure what they are calling out on their plans is consistent with our records in our office. He said that surveyors make quasijudicial decisions and we do not want to limit anything that they are doing that may become controversial. He said our goal is to actually know the monument record versus having any type of condition on a plat. He asked if there were any questions. He said I think we touched on this a couple of times.

NEW BUSINESS

BEAN BLOSSOM I25. Trohn said this is an approved monument but the goal here is to get some feedback from the SRB and potential guidance. He talked about the measurements that MCSO had between the offset corners. He said there was a measurement about six inches off from what MCSO had. He said that they did not line up led to hesitation and wanting to bring this to the board. He showed a disclaimer on the tiesheet. There was a Curry survey for reference. He talked about the area being swampy. Oser suggested measuring to the stone. TER said it would be good to go out and gather more information. Deckard had a question about distances. Oser said it sounds like you have

verified that the rebar that you found is the same that Curry set. She said as long as the coordinates are good, that would not stop me from certifying the corner. Deckard said I feel the same way. Trohn

CERTIFICATION OF CORNERS

Trohn suggested that he would cover the five monuments and maybe at the end there could be a motion to certify them all.

BEAN BLOSSOM I11. Trohn said this was certified in 2010 as a limestone with no etching. He said found the monument. He talked about the recent measurements versus what was measured back in 2010. He talked about putting mag nails in to enhance witnessing. Cass said she found the old mag nail and set a new one in the same spot over the top of it with a new washer.

BEAN BLOSSOM I13. Trohn said this was a straightforward monument. He talked about the witnesses. Borgman asked if the address had been updated for the house indicated on the tiesheet. Cass Raley said that she could double check it to be sure. Raley said it looks like there was typo.

BEAN BLOSSOM Q07. He said this was a limestone post. Raley said the wrong tree had been called out in 2010; it was not a shagbark, it was a red oak.

BEAN BLOSSOM Q17. Trohn said this was originally a 2002 tie by Steve Farkas. He said there was a Kevin Enright tie in 1997 and a Ben Bledsoe tie in 1994. He said it is a limestone post. He talked about the witnesses.

BEAN BLOSSOM U05. Trohn said this is a limestone with a faint X. He showed a tiesheet from MCSO records that is not dated or signed. He said he thinks the document can speak for itself when one is out in the field. Oser noted that wrong name of the surveyor on a tiesheet. Trohn talked about the witnesses. Trohn asked about making a faint X more distinct with a tool. Oser said that she had done that in the past and then made a note of it. She said that is my opinion. Trohn noted that it would be helpful with measuring.

There was a discussion of Bean Blossom Q07. Oser suggested checking a bearing and approve it contingent to that being checked. She said the other thing you could do is grab Field Book 43, page 70, and make sure it is not a typo.

Trohn suggested a motion to certify all the corners (Bean Blossom I11, I13, Q07, Q17 and U05), with conditions noted for Bean Blossom I13 (with correction and verifying point B), and U05 (with condition of verifying if it is limestone or sandstone and addressing comments from Rachel Oser earlier today).

Todd Borgman approved the motion. Oser seconded the motion. Vote by roll call: Oser, YES, and Borgman, YES. Eric Deckard was experiencing technical issues however he messaged via the Zoom chat and said YES. Motion carried unanimously.

ADJOURNMENT

There was no further business and Trohn adjourned the meeting at 5:11 pm.

Minutes approved: _____

Tiesheets added to record books: _____

Secretary: _____

DRAFT

PENDING

MONUMENT RECORD

Corner ID: **InCr_A11**

West 1/4 Corner

Section 18- T07N-R02W, 2nd P.M.

Indian Creek Township, Monroe County, Indiana

| | | | | | | | | | |
|--|--|--|--|--|--|--|--|--|--|
| | | | | | | | | | |
| | | | | | | | | | |
| | | | | | | | | | |
| | | | | | | | | | |
| | | | | | | | | | |
| | | | | | | | | | |
| | | | | | | | | | |
| | | | | | | | | | |
| | | | | | | | | | |
| | | | | | | | | | |

Section 13

T07N-R03W

Greene Co

Section 18

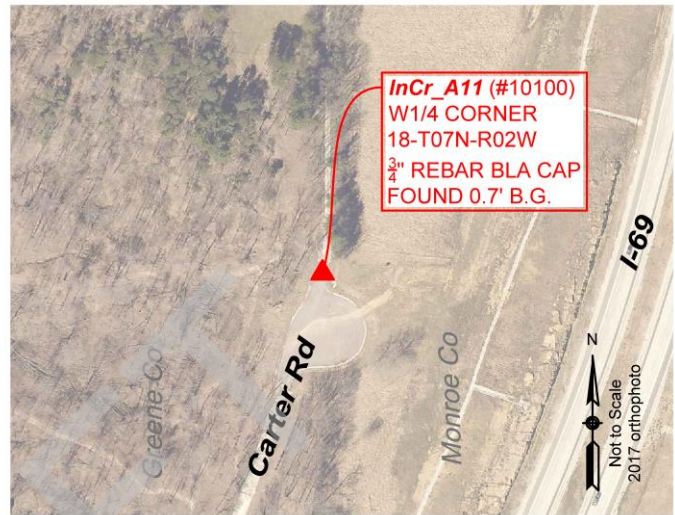
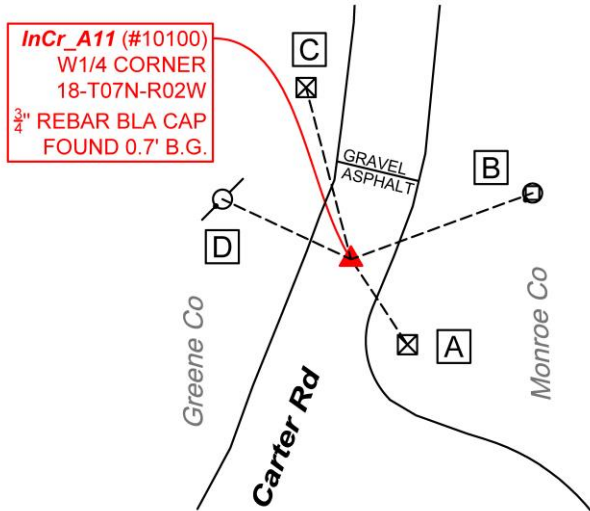
T07N-R02W

Monroe Co

MONUMENT: Describe monument set or found (Include material type, scribing, distance above/below grade, dimensions.)

3/4" Rebar with yellow plastic cap stamped "BLA FIRM 0030" 0.7' below grade in the centerline of Carter Road.

MONUMENT LOCATION SKETCH:



WITNESS MONUMENT TIES

All ties to new Bearing Trees (BTs) are a mag nail set in a 1-1/2" plastic washer stamped "SURVEY MARKER - DO NOT REMOVE" and hack mark at the root crown (less than 12" above ground) perpendicular to the center of the tree, unless otherwise noted. BT diameters are noted as dbh and are measured approximately 4.5' above ground. Bearings are measured from the monument to the center of the BT, distances are measured from the monument to the mag nail.

| ID | BEARING | DISTANCE | DESCRIPTION |
|-----------|---------|----------|---|
| Witness A | S 34d E | 21.2' | Cut "X" on top of a 12" concrete culvert located on the east side of Carter Rd. |
| Witness B | N 70d E | 40.2' | Mag nail found 0.2' above grade on the southwest side of a 5'x5' wooden corner post with barb wire fence running north. |
| Witness C | N 15d W | 36.8' | Cut "X" on top of corrugated metal culvert located on the west side of Carter Rd. |
| Witness D | N 65d W | 29.5' | Mag nail set at 5' above grade on south side of a 9" UDWI 144414 utility pole. |

PHOTO IDENTIFIED: Photo Date: 09/23/2021



OFFICE OF THE MONROE COUNTY SURVEYOR • Trohn Enright-Randolph

119 W 7th Street, Bloomington, IN 47404 • 812-349-2570 • surveyoroffice@co.monroe.in.us

Page 1 of 2

PENDING

Corner ID: **InCr_A11**

West 1/4 Corner

Section 18- T07N-R02W, 2nd P.M.

Indian Creek Township, Monroe County, Indiana

Section 13
T07N-R03W
Greene Co

Section 18
T07N-R02W
Monroe Co



Photo Orientation & Description: InCr_A11 from above



Photo Orientation & Description: Looking north at InCr_A11

ORIGINAL OR SUBSEQUENT SURVEY EVIDENCE FOUND: *Include, search area or areas, search procedure, etc.*

Date of Field work/Search: 09/23/2021 By: RSO & JMG Monument Found: Rebar with BLA cap BTs or Reference Objects Found: Found
Witness D from 03/2011 Monument Record = Witness B above Project #: InCr_A11 Field Book: 54/34 Equipment: The basis of
bearings is Grid North System NAD83(2011)/Indiana West NAVD 88, Epoch 2010.0000, geoid12b_conus.db3, US Survey Feet,
derived from GPS observations utilizing the Indiana Real-Time Network (INCORS). Coordinate data was collected with a Javad
Triumph LS Network Rover. Coordinates are available upon request. Distances to witness ties were collected with a Leica Disto
laser distance meter. Bearings to witness ties were collected with the internal magnetic compass of the Javad Triumph LS and were
automatically adjusted to grid north and are approximately shown hereon for reference. Priority should be given to provided
distances over bearings. Notes: All witness photos on file in the Monroe County Surveyors Office.

OTHER EVIDENCE: Describe corner location relative to nearby features and how to reach the corner location – note fences, roads, timber cutting lines, mow lines, clearings, plantings, streams, topo changes, etc.

Monument is at the north end of a cul de sac of Carter Rd, 19 feet south of a transition to gravel. 2011 monument indicated Greene County offset corner was 21.6' north of InCr A11. Magnetic signal was found in that vicinity. But we did not dig for a monument.

MONUMENT PRESERVATION: *Describe work done to preserve existing monument.*

Asphalt replaced in excavation of monument location. "Protect Nearby Survey Marker" signed nailed to east side of 9" UDWI 144414 utility pole at 5' above grade.

THEORY OF LOCATION: *Describe the theory of location for acceptance of this monument. Include monument origin and associated uncertainty.*

The BLA rebar was previously witnessed by the Monroe County Surveyor, Kevin Enright, on March 28, 2011. References on File: Matthew G. Badger survey, Glasgow Site (2010), on file in Recorder Office and Matthew G. Badger survey, I-69 Section 4 Segment 7 (2011), on file in Recorder Office (IN2011010190). Historic research has not yet been performed to prove the validity of this monument.

CERTIFICATION:

OFFICE OF THE MONROE COUNTY SURVEYOR • Trohn Enright-Randolph

119 W 7th Street, Bloomington, IN 47404 • 812-349-2570 • surveyoroffice@co.monroe.in.us

PENDING

MONUMENT RECORD

Corner ID: **Rich_I01**

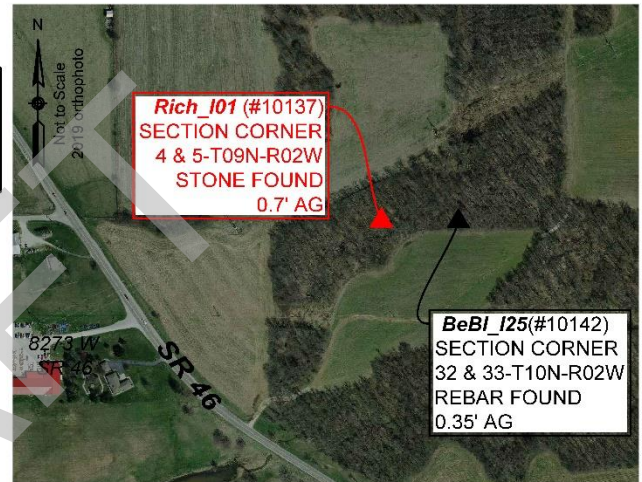
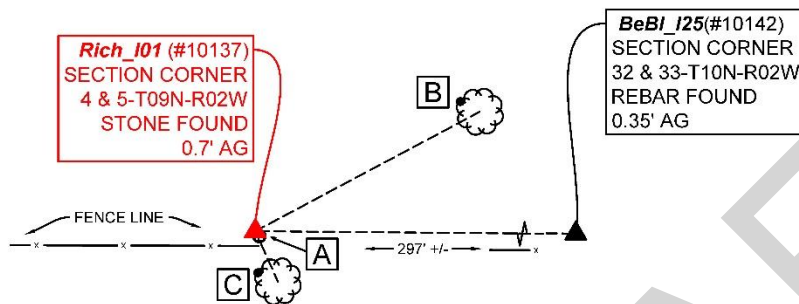
Section Corner

Sections 4 & 5- T09N-R02W, 2nd P.M.
Richland Township, Monroe County, Indiana

| | |
|-------------------------|-------------------------|
| Section 32 T10N-R02W | Section 33 T10N-R02W |
| Section 05 T09N-R02W | Section 04 T09N-R02W |

MONUMENT: Describe monument set or found (Include material type, scribing, distance above/below grade, dimensions.)
0.6' x 0.7' limestone with very faint 'X' found 0.7' above grade

MONUMENT LOCATION SKETCH:



| WITNESS MONUMENT TIES | | | |
|--|---------------|----------|---|
| All ties to new Bearing Trees (BTs) are a mag nail set in a 1-1/2" plastic washer stamped "SURVEY MARKER - DO NOT REMOVE" and hack mark at the root crown (less than 12" above ground) perpendicular to the center of the tree, unless otherwise noted. BT diameters are noted as dbh and are measured approximately 4.5' above ground. Bearings are measured from the monument to the center of the BT, distances are measured from the monument to the mag nail. | | | |
| ID | BEARING | DISTANCE | DESCRIPTION |
| Witness A | S 38d E | 1.0' | 8" X 10" and 2.9' tall limestone post |
| Witness B | N 62d E | 42.0' | Mag nail and washer set in hack 1.0' above grade in the northwest side of a 15" red oak |
| Witness C | S 24d E | 9.1' | Mag and washer set in scar with old mag nail per 2010 Monroe County Surveyor tie sheet 1.4' above grade in the northwest side of a 19" shagbark hickory |
| MONUMENT ACCESSORIES | | | |
| Other survey grade monuments that were located in the vicinity and their relation to the monument. Geodetic coordinates in this table are provided in the format Easting, Northing. | | | |
| (#10142) | S 89d29'59" E | 296.95' | 5/8" rebar found 0.35' above grade wrapped in pink flagging with no cap |



OFFICE OF THE MONROE COUNTY SURVEYOR • Trohn Enright-Randolph

119 W 7th Street, Bloomington, IN 47404 • 812-349-2570 • surveyorsoffice@co.monroe.in.us

Page 1 of 3

PENDING

MONUMENT RECORD

Corner ID: **Rich_I01**

Section Corner

Sections 4 & 5- T09N-R02W, 2nd P.M.
Richland Township, Monroe County, Indiana

Section 32
T10N-R02W

Section 33
T10N-R02W

Section 05
T09N-R02W

Section 04
T09N-R02W

PHOTO IDENTIFIED: Photo Date: 12/09/2020



Photo Orientation & Description: Rich_I01 from above



Photo Orientation & Description: Looking south at Rich_I01



Photo Orientation & Description: Looking west at Rich_I01



Photo Orientation & Description: Looking east at Rich_I01

ORIGINAL OR SUBSEQUENT SURVEY EVIDENCE FOUND: Include, search area or areas, search procedure, etc.

Date of Field work/Search: 12/09/2020 By: CAR Monument Found: Stone BTs or Reference Objects Found: All ties found per 2010 Monroe County Surveyor monument record. Project #: BeBl Stones Field Book: 54/18 Equipment: The basis of bearings is Grid North System NAD83(2011)/Indiana West NAVD 88, Epoch 2010.0000, geoid12b_conus.db3, US Survey Feet, derived from GPS observations utilizing the Indiana Real-Time Network (INCORS). Coordinate data was collected with a Javad Triumph LS Network Rover. Coordinates are available upon request. Distances to witness ties were collected with a Leica Disto laser distance meter. Bearings to witness ties were collected with the internal magnetic compass of the Javad Triumph LS and were automatically adjusted to grid north and are approximately shown hereon for reference. Priority should be given to provided distances over bearings. Notes: Photos of all witnesses are on file in the Monroe County Surveyor's Office. The mag nail witness per 2010 MCSO tie sheet was found using a metal detector 1.4' above grade in a visible scar on the northwest side of a 19" shagbark hickory.

OTHER EVIDENCE: Describe corner location relative to nearby features and how to reach the corner location – note fences, roads, timber cutting lines, mow lines, clearings, plantings, streams, topo changes, etc.

The monument is located along an east/west running fence with a lot of downed trees fallen along the fence. There was a Monroe County "Protect Nearby Survey Marker" sign found per 2010 Monroe Co Surveyors tie sheet set 3.7' above grade facing north, attached to a t-post in the east/west fence line. A 5/8" rebar at BeBl_I25 is 297' +/- east of the stone.

MONUMENT PRESERVATION: Describe work done to preserve existing monument.

Set new witnesses and collected new coordinates. Tied orange flagging around the stone and flagged witnesses.



OFFICE OF THE MONROE COUNTY SURVEYOR • Trohn Enright-Randolph

119 W 7th Street, Bloomington, IN 47404 • 812-349-2570 • surveyoroffice@co.monroe.in.us

Page 2 of 3



MONUMENT RECORD

Corner ID: **Rich_I01**

Section Corner

Sections 4 & 5- T09N-R02W, 2nd P.M.
Richland Township, Monroe County, Indiana

| | |
|-------------------------|-------------------------|
| Section 32 T10N-R02W | Section 33 T10N-R02W |
| Section 05 T09N-R02W | Section 04 T09N-R02W |

THEORY OF LOCATION: *Describe the theory of location for acceptance of this monument. Include monument origin and associated uncertainty.*
The 0.4'x0.7'x0.6' limestone with faint "X" was previously witnessed and Monument Record prepared under the direction of the Monroe County Surveyor, Edmund O. Farkas, on March 14, 1985. The 1985 Monument Record accepted the 0.4'x0.7'x0.6' limestone with faint "X". The 0.4'x0.7'x0.6' limestone with faint "X" witnessed and the Monument Record prepared under the direction of the Monroe County Surveyor, Kevin Enright, on February 26, 2010 and accepted by the Monroe County Surveyor Review Board on March 09, 2010. The 2010 Monument Record accepted the 0.4'x0.7'x0.6' limestone with faint "X" per a 2003 MSC Realty LLC survey Douglas Curry on file in Surveyor Office, RSID004122.

CERTIFICATION:

DRAFT



OFFICE OF THE MONROE COUNTY SURVEYOR • Trohn Enright-Randolph

119 W 7th Street, Bloomington, IN 47404 • 812-349-2570 • surveyoroffice@co.monroe.in.us

Page 3 of 3

MONUMENT RECORD
State of Indiana - County of Monroe

Section: 04

Township: 9 North

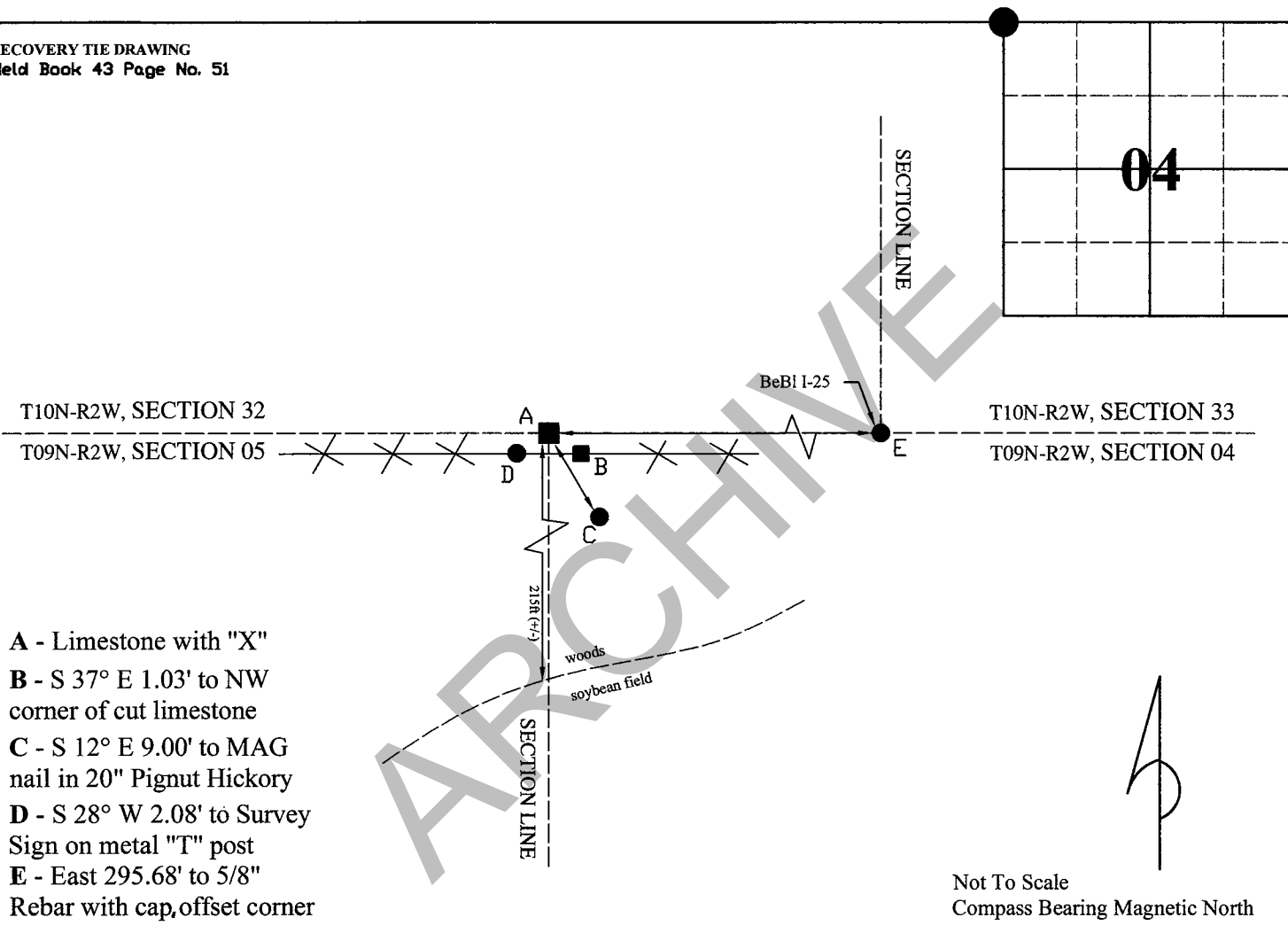
Range: 2 West

Corner ID: Rich I-01

Monument Description & Remarks: Limestone with faint "X", length 0.66ft, width 0.70ft, height 0.87ft. Survey Sign 4.5ft above ground at pt. D

References On File: Edmund O. Farkas recovery tie drawing, Monument Record (1985), and Douglas R. Curry survey, MSC Realty LLC (2003), on file in Surveyor Office

RECOVERY TIE DRAWING
Field Book 43 Page No. 51



I, Kevin P. Enright, Monroe County Surveyor, hereby certify that this document was prepared under my direction in accordance with the provisions of section 36-2-12-11 of the Indiana Code; and the above data is given under my hand and seal this 26th day of February, 2010.



Administered by the Monroe County Surveyor Review Board

Date: 3/9/2010



MONUMENT RECORD

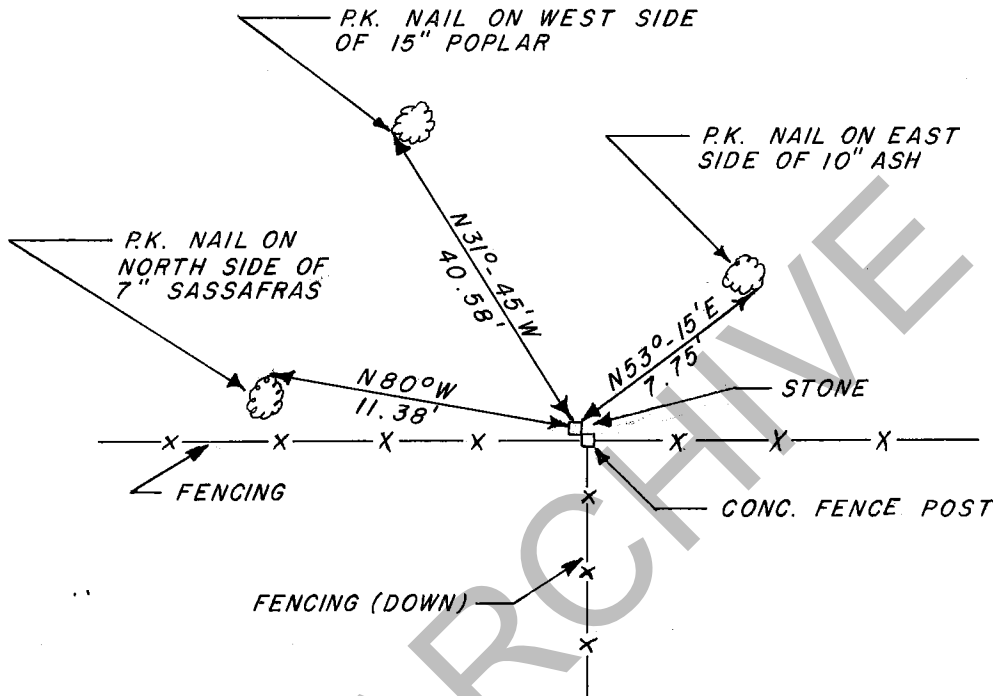
STATE OF INDIANA - COUNTY OF MONROE

SECTION 5, TOWNSHIP 9 NORTH, RANGE 2 WEST

MONUMENT DESCRIPTION & REMARKS

FOUND LIMESTONE STONE WITH FAINT CHISELED "X" ON TOP, STONE
IS SOLID IN GROUND AND IS 0.40' X 0.70' X 0.60' OUT OF THE
GROUND.

RECOVERY TIE DRAWING



(●) AT CORNER



NOT TO SCALE

STATE OF INDIANA

COUNTY OF MONROE

I, EDMUND O. FARKAS HEREBY CERTIFY THAT THIS
DOCUMENT WAS PREPARED UNDER MY DIRECTION IN ACCORDANCE
WITH THE PROVISIONS OF SECTION 17-3-64-4 - 17-3-64-8 OF
THE INDIANA CODE, BEING ACTS OF 1965, CHAPTER 319; AND
THE ABOVE DATA IS GIVEN UNDER MY HAND AND SEAL
THIS 14TH DAY OF MARCH, 19 85 A.D.

SPACE
RESERVED
FOR
RECORDING
OFFICER.

INDIANA REGISTERED LAND SURVEYOR NO. _____

OR _____

UNITED STATES GOVERNMENT AGENCY

TOWNSHIP:
RICHLAND

CORNER I.D.

I-1

TITLE

PENDING

MONUMENT RECORD

Corner ID: **BeBI_I25**

Section Corner

Sections 32 & 33- T10N-R02W, 2nd P.M.
Bean Blossom Township, Monroe County, Indiana

Section 32
T10N-R02W

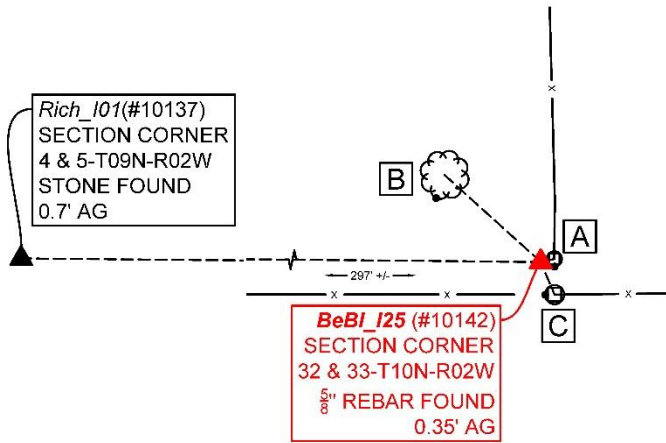
Section 33
T10N-R02W

Section 05
T09N-R02W

Section 04
T09N-R02W

MONUMENT: Describe monument set or found (Include material type, scribing, distance above/below grade, dimensions.)
5/8" rebar found 0.35' above grade wrapped in pink flagging, with no cap found.

MONUMENT LOCATION SKETCH:



WITNESS MONUMENT TIES

All ties to new Bearing Trees (BTs) are a mag nail set in a 1-1/2" plastic washer stamped "SURVEY MARKER - DO NOT REMOVE" and hack mark at the root crown (less than 12" above ground) perpendicular to the center of the tree, unless otherwise noted. BT diameters are noted as dbh and are measured approximately 4.5' above ground. Bearings are measured from the monument to the center of the BT, distances are measured from the monument to the mag nail.

| ID | BEARING | DISTANCE | DESCRIPTION |
|-----------|---------|----------|--|
| Witness A | N 78d E | 2.9' | Mag nail set 0.9' above grade on the south side of a 7" round wooden post in north running fence with a Monroe County "Protect Nearby Survey Marker" sign found 3.88' above grade facing west. |
| Witness B | N 48d W | 27.5' | Mag nail and washer set in hack 0.9' above grade in the southwest side of a 6" beech tree |
| Witness C | S 23d E | 7.5' | Mag and washer set 0.8' above grade on the west side of an 11" tree stump serving as a fence post with the east/west/north running fence wrapped around it. |

MONUMENT ACCESSORIES

Other survey grade monuments that were located in the vicinity and their relation to the monument. Geodetic coordinates in this table are provided in the format Easting, Northing.

| | | | |
|----------|---------------|---------|--|
| (#10137) | N 89d29'59" W | 296.95' | 0.6 x 0.7 limestone with very faint 'X' 0.7' above grade |
|----------|---------------|---------|--|



OFFICE OF THE MONROE COUNTY SURVEYOR • Trohn Enright-Randolph

119 W 7th Street, Bloomington, IN 47404 • 812-349-2570 • surveyoroffice@co.monroe.in.us

Page 1 of 3

PENDING

MONUMENT RECORD

Corner ID: **BeBI_I25**

Section Corner

Sections 32 & 33- T10N-R02W, 2nd P.M.
Bean Blossom Township, Monroe County, Indiana

Section 32
T10N-R02W

Section 33
T10N-R02W

Section 05
T09N-R02W

Section 04
T09N-R02W

PHOTO IDENTIFIED: Photo Date: 12/09/2020



Photo Orientation & Description: BeBI_I25 from above



Photo Orientation & Description: Looking east at BeBI_I25



Photo Orientation & Description: Looking south at BeBI_I25



Photo Orientation & Description: Looking north at BeBI_I25

ORIGINAL OR SUBSEQUENT SURVEY EVIDENCE FOUND: Include, search area or areas, search procedure, etc.

Date of Field work/Search: 12/09/2020 By: CAR Monument Found: Rebar BTs or Reference Objects Found: Wooden post and "Protect Nearby Survey Marker" sign were found per 2010 MCSO monument record. The mag nail was not found. Project #: BeBI Stones
Field Book: 54/18 Equipment: The basis of bearings is Grid North System NAD83(2011)/Indiana West NAVD 88, Epoch 2010.0000, geoid12b_conus.db3, US Survey Feet, derived from GPS observations utilizing the Indiana Real-Time Network (INCORS).
Coordinate data was collected with a Javad Triumph LS Network Rover. Coordinates are available upon request. Distances to witness ties were collected with a Leica Disto laser distance meter. Bearings to witness ties were collected with the internal magnetic compass of the Javad Triumph LS and were automatically adjusted to grid north and are approximately shown hereon for reference. Priority should be given to provided distances over bearings. Notes: Photos of witnesses are on file in the Monroe County Surveyors Office.

OTHER EVIDENCE: Describe corner location relative to nearby features and how to reach the corner location – note fences, roads, timber cutting lines, mow lines, clearings, plantings, streams, topo changes, etc.

The monument is northwest of a north/east/west fenceline, 2.9' +/- from the fence. There is a Monroe County "Protect Nearby Survey



OFFICE OF THE MONROE COUNTY SURVEYOR • Trohn Enright-Randolph

119 W 7th Street, Bloomington, IN 47404 • 812-349-2570 • surveyorsoffice@co.monroe.in.us

Page 2 of 3



MONUMENT RECORD

Corner ID: **BeBI_I25**

Section Corner

Sections 32 & 33- T10N-R02W, 2nd P.M.
Bean Blossom Township, Monroe County, Indiana

| | |
|-------------------------|-------------------------|
| Section 32 T10N-R02W | Section 33 T10N-R02W |
| Section 05 T09N-R02W | Section 04 T09N-R02W |

Marker" sign on the west side of a 7" round wooden post 3.88' above grade facing west. There is a treeline/field south of the monument/fenceline.

MONUMENT PRESERVATION: *Describe work done to preserve existing monument.*

Collected coordinates, took new witnesses, tied orange flagging around the monument and spray painted it orange. Flagged all witnesses.

THEORY OF LOCATION: *Describe the theory of location for acceptance of this monument. Include monument origin and associated uncertainty.*

The 5/8" Rebar with cap, "BYNUM – FANYO LS 890006" was previously witnessed and the Monument Record prepared under the direction of the Monroe County Surveyor, Kevin Enright, on February 26, 2010 and accepted by the Monroe County Surveyor Review Board on March 09, 2010. The 2010 Monument Record accepted the 5/8" Rebar with cap, "BYNUM – FANYO LS 890006" per a 2003 MSC Realty LLC survey Douglas Curry on file in Surveyor Office, RSID004122.

CERTIFICATION:

DRAFT



OFFICE OF THE MONROE COUNTY SURVEYOR • Trohn Enright-Randolph

119 W 7th Street, Bloomington, IN 47404 • 812-349-2570 • surveyoroffice@co.monroe.in.us

Page 3 of 3

MONUMENT RECORD
State of Indiana - County of Monroe

Section: 33

Township: 10 North

Range: 2 West

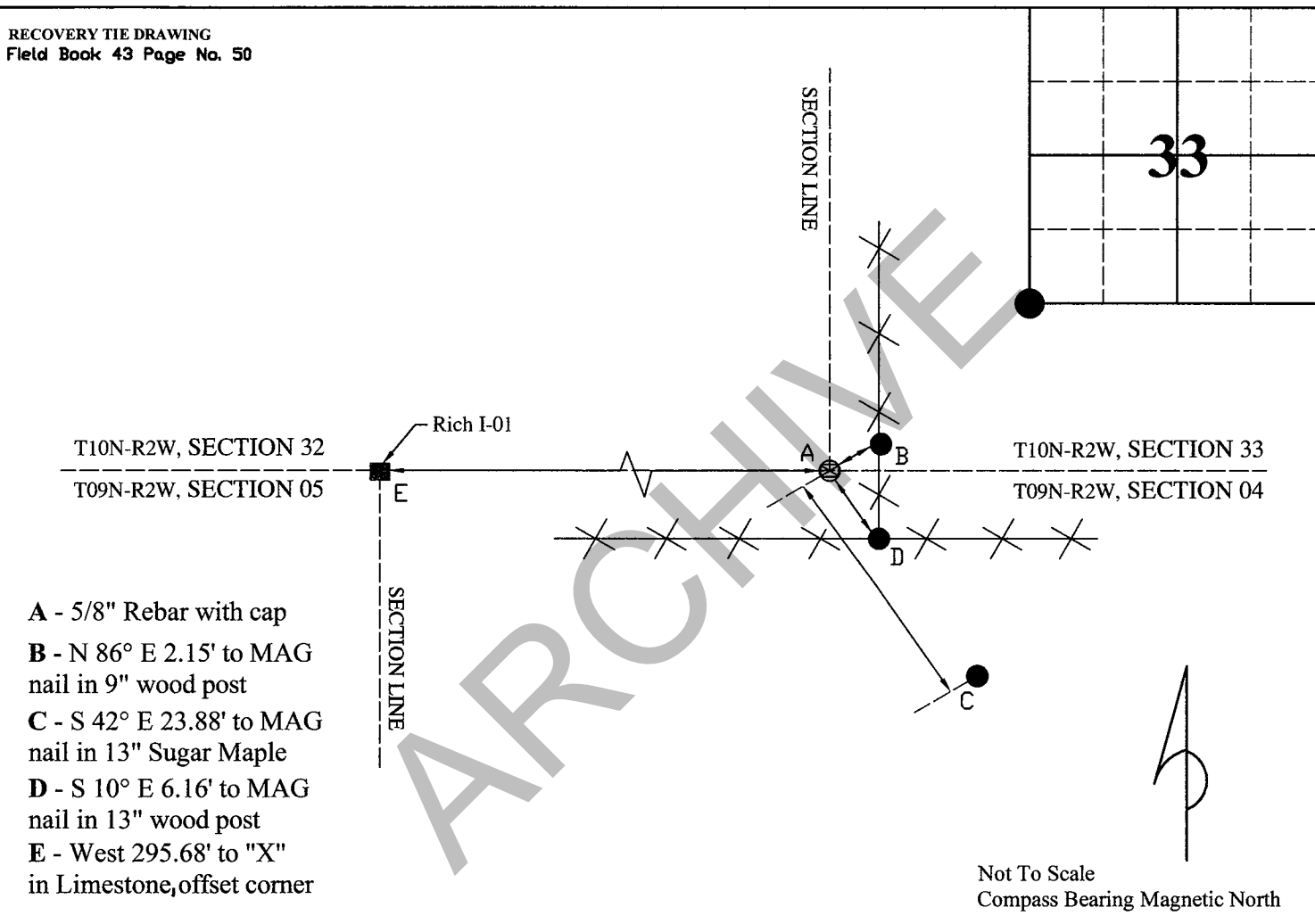
Corner ID: BeBl I-25

Monument Description & Remarks: 5/8" Rebar with cap, "BYNUM - FANYO LS 890006".

Survey Sign 4.5ft above ground at pt. B

References On File: Douglas R. Curry survey, MSC Realty LLC (2003), on file in Surveyor Office

RECOVERY TIE DRAWING
Field Book 43 Page No. 50

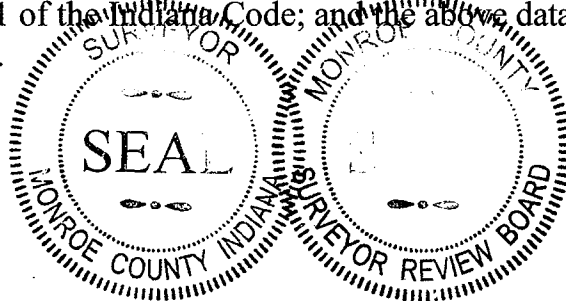


I, Kevin P. Enright, Monroe County Surveyor, hereby certify that this document was prepared under my direction in accordance with the provisions of section 36-2-12-11 of the Indiana Code; and the above data is given under my hand and seal this 26th day of February, 2010.

Kevin P. Enright

Administered by the Monroe County Surveyor Review Board

Date: 3/9/2010



PENDING

MONUMENT RECORD

Corner ID: **BeBI_C05**

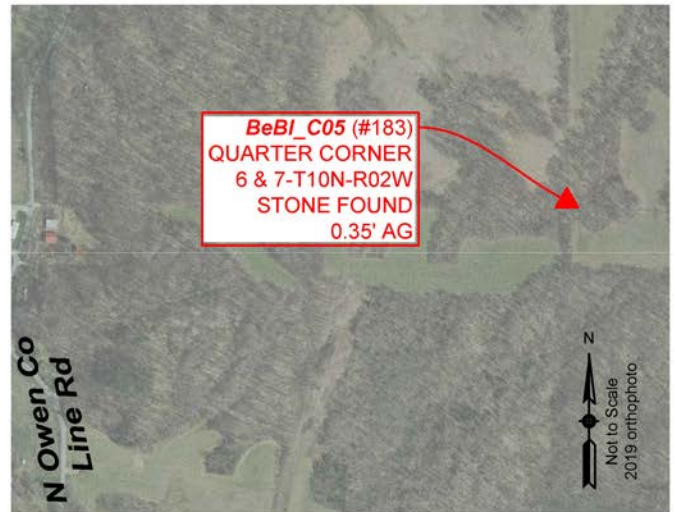
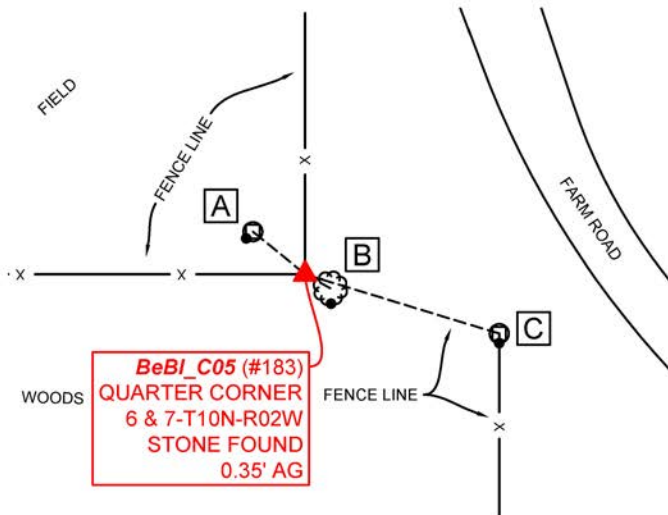
Quarter Corner

Sections 6 & 7- T10N-R02W, 2nd P.M.
Bean Blossom Township, Monroe County, Indiana

| |
|------------|
| Section 06 |
| T10N-R02W |
| + |
| + |
| + |
| + |
| + |
| + |
| Section 07 |
| T10N-R02W |
| + |
| + |
| + |
| + |
| + |
| + |

MONUMENT: Describe monument set or found (Include material type, scribing, distance above/below grade, dimensions.)
0.7' x 0.35' limestone found with no markings 0.35' above grade planted solidly in the ground.

MONUMENT LOCATION SKETCH:



| WITNESS MONUMENT TIES | | | |
|--|---------|----------|---|
| All ties to new Bearing Trees (BTs) are a mag nail set in a 1-1/2" plastic washer stamped "SURVEY MARKER - DO NOT REMOVE" and hack mark at the root crown (less than 12" above ground) perpendicular to the center of the tree, unless otherwise noted. BT diameters are noted as dbh and are measured approximately 4.5' above ground. Bearings are measured from the monument to the center of the BT, distances are measured from the monument to the mag nail. | | | |
| ID | BEARING | DISTANCE | DESCRIPTION |
| Witness A | N 51d W | 7.0' | Mag nail and washer set 0.45' above grade in the southwest side of a 6" round wooden post with east/west running fence |
| Witness B | S 61d E | 3.0' | Mag nail and washer set in scar 0.5' above grade in the south side of a 14" red oak with a Monroe County Surveyor "Protect Nearby Survey Marker" sign found 4.4' above grade facing west per 1999 monument record |
| Witness C | S 73d E | 21.1' | Mag and washer set in the south side of a 7" round wooden post 5.1' above grade next to old nail and shiner found in the top of the post per 1999 monument record |



OFFICE OF THE MONROE COUNTY SURVEYOR • Trohn Enright-Randolph

119 W 7th Street, Bloomington, IN 47404 • 812-349-2570 • surveyorsoffice@co.monroe.in.us

PENDING

MONUMENT RECORD

Corner ID: **BeBI_C05**

Quarter Corner

Sections 6 & 7- T10N-R02W, 2nd P.M.
Bean Blossom Township, Monroe County, Indiana

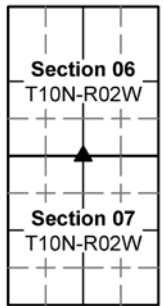


PHOTO IDENTIFIED: Photo Date: 04/09/2021



Photo Orientation & Description: BeBI_C05 from above



Photo Orientation & Description: Looking north at BeBI_C05



Photo Orientation & Description: Looking south at BeBI_C05



Photo Orientation & Description: Looking west at BeBI_C05



Photo Orientation & Description: Looking east at BeBI_C05



OFFICE OF THE MONROE COUNTY SURVEYOR • Trohn Enright-Randolph

119 W 7th Street, Bloomington, IN 47404 • 812-349-2570 • surveyoroffice@co.monroe.in.us

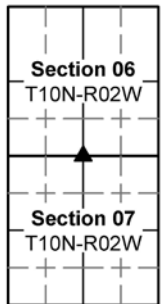


MONUMENT RECORD

Corner ID: **BeBI_C05**

Quarter Corner

Sections 6 & 7- T10N-R02W, 2nd P.M.
Bean Blossom Township, Monroe County, Indiana



ORIGINAL OR SUBSEQUENT SURVEY EVIDENCE FOUND: *Include, search area or areas, search procedure, etc.*

Date of Field work/Search: 04/04/2021 *By:* CAR *Monument Found:* Stone *BTs or Reference Objects Found:* Penny nail & shiner, wooden fence posts, Monroe County "Protect Nearby Survey Marker" sign, & old mag nail deep in scar all found per 1999 monument record
Project #: BeBI Stones *Field Book:* 54/31 *Equipment:* The basis of bearings is Grid North System NAD83(2011)/Indiana West NAVD 88, Epoch 2010.0000, geoid12b_conus.db3, US Survey Feet, derived from GPS observations utilizing the Indiana Real-Time Network (INCRS). Coordinate data was collected with a Javad Triumph LS Network Rover. Coordinates are available upon request. Distances to witness ties were collected with a Leica Disto laser distance meter. Bearings to witness ties were collected with the internal magnetic compass of the Javad Triumph LS and were automatically adjusted to grid north and are approximately shown hereon for reference. Priority should be given to provide distances over bearings. *Notes:* All witness photos on file in the Monroe County Surveyors Office. There is fence running southeast from the stone to Witness C, but it is not showing on the drawing due to not wanting to clutter the drawing.

OTHER EVIDENCE: *Describe corner location relative to nearby features and how to reach the corner location – note fences, roads, timber cutting lines, mow lines, clearings, plantings, streams, topo changes, etc.*

There is a north, south, and southeast running fence intersection with a 14" red oak east of the stone. There is a farm road northeast of the stone and a field northwest of the stone. The only way to access this area is by farm road or by foot.

MONUMENT PRESERVATION: *Describe work done to preserve existing monument.*

Collected new coordinates, located old witnesses/set new witnesses, flagged witnesses, tested stone with acid, & spray painted stone orange.

THEORY OF LOCATION: *Describe the theory of location for acceptance of this monument. Include monument origin and associated uncertainty.*

The Limestone 0.43'x0.77'x0.38' was previously witnessed and Monument Record prepared under the direction of the Monroe County Surveyor, Kevin Enright, on November 5, 1999 and accepted by the Monroe County Surveyor Review Board on January 20, 2000. The Monument Record accepted the 0.43'x0.77'x0.38' Limestone.

CERTIFICATION:



OFFICE OF THE MONROE COUNTY SURVEYOR • Trohn Enright-Randolph

119 W 7th Street, Bloomington, IN 47404 • 812-349-2570 • surveyoroffice@co.monroe.in.us

Page 3 of 3

MONUMENT RECORD
State of Indiana - County of Monroe

Section: 07

Township: 10 North

Range: 2 West

Corner ID: Be Bl C-05

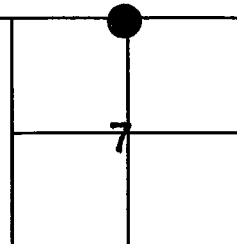
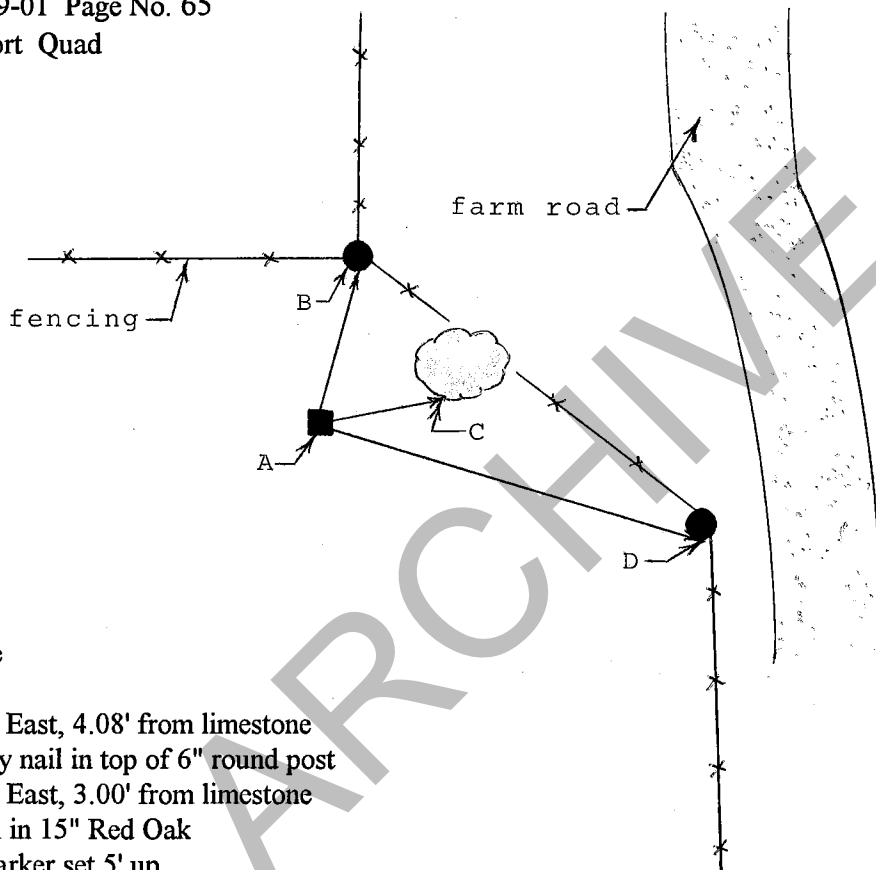
Monument Description & Remarks: Found Limestone, no etchings, at North $\frac{1}{4}$ corner of section. Stone was well planted in ground and measured 0.38' (h) x 0.77' (l) x 0.43' (w). Witness nails with flagging found in round fence corner posts (B and D below).

References On File: Reported as corner by Mike Mundy, R.L.S. No survey on file.

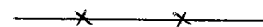
RECOVERY TIE DRAWING

Field Book 99-01 Page No. 65

USGS Gosport Quad



• At Corner



A - Limestone

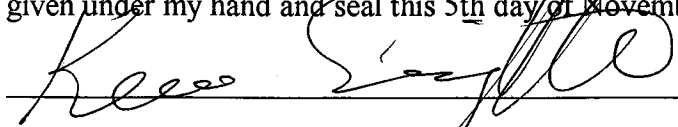
B - North 16° East, 4.08' from limestone
16 penny nail in top of 6" round post

C - North 81° East, 3.00' from limestone
MAG nail in 15" Red Oak
Survey marker set 5' up

D - South 72° East, 20.98' from limestone
16 penny nail in top of 8" round post

Not To Scale
Compass Bearing Magnetic North

I, Kevin P. Enright, Monroe County Surveyor, hereby certify that this document was prepared under my direction in accordance with the provisions of Section 36-2-12-11 of the Indiana Code; and the above data is given under my hand and seal this 5th day of November, 1999.



Administered by the Monroe County Surveyor Review Board

Date: 1-20-00



PENDING

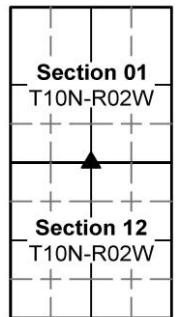
MONUMENT RECORD

Corner ID: **BeBI_W05**

Quarter Corner

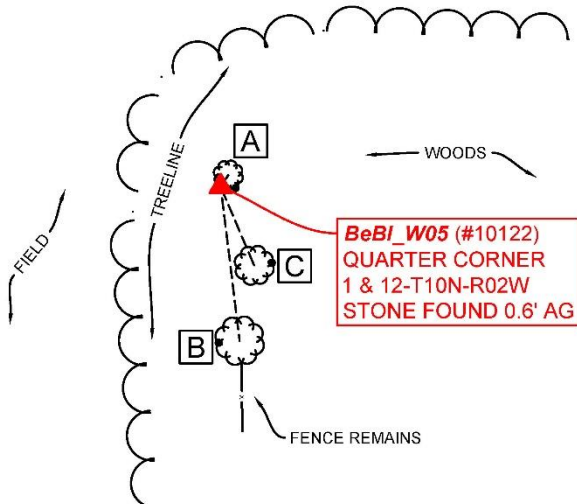
Sections 1 & 12- T10N-R02W, 2nd P.M.

Bean Blossom Township, Monroe County, Indiana



MONUMENT: Describe monument set or found (Include material type, scribing, distance above/below grade, dimensions.)
0.6' x 0.7' sandstone with carved 'X' on the southeast side found 0.6' above grade

MONUMENT LOCATION SKETCH:



WITNESS MONUMENT TIES

All ties to new Bearing Trees (BTs) are a mag nail set in a 1-1/2" plastic washer stamped "SURVEY MARKER - DO NOT REMOVE" and hack mark at the root crown (less than 12" above ground) perpendicular to the center of the tree, unless otherwise noted. BT diameters are noted as dbh and are measured approximately 4.5' above ground. Bearings are measured from the monument to the center of the BT, distances are measured from the monument to the mag nail.

| ID | BEARING | DISTANCE | DESCRIPTION |
|-----------|---------|----------|--|
| Witness A | N 0d W | 20.0' | Mag nail and washer set in hack 0.7' above grade on the south side of a 17" white oak |
| Witness B | N 45d E | 20.0' | Mag nail and washer set in hack 0.8' above grade on the west side of a bifurcated 19" black walnut with south running fence remains and wrapped in barbed wire |
| Witness C | S 23d E | 17.9' | Mag nail and washer set in hack 0.85' above grade on the east side of a 4.5" walnut |



OFFICE OF THE MONROE COUNTY SURVEYOR • Trohn Enright-Randolph

119 W 7th Street, Bloomington, IN 47404 • 812-349-2570 • surveyoroffice@co.monroe.in.us

Page 1 of 3

PENDING

MONUMENT RECORD

Corner ID: **BeBI_W05**

Quarter Corner

Sections 1 & 12- T10N-R02W, 2nd P.M.

Bean Blossom Township, Monroe County, Indiana

Diagram illustrating the layout of two sections, Section 01 and Section 12, both labeled T10N-R02W. The sections are arranged in a 2x2 grid. Section 01 is in the top-left, and Section 12 is in the bottom-right. A black arrow points from Section 12 to Section 01.

PHOTO IDENTIFIED: *Photo Date:* 8/20/2020



Photo Orientation & Description: BeBl_W05 from above



Photo Orientation & Description: BeBI_W05 from above



Photo Orientation & Description: Looking west at BeBl_W05



Photo Orientation & Description: Looking east at BeBl_W05



Photo Orientation & Description: Looking north at BeBI_W05



Photo Orientation & Description: Looking south at BeBl_W05



OFFICE OF THE MONROE COUNTY SURVEYOR • Trohn Enright-Randolph

119 W 7th Street, Bloomington, IN 47404 • 812-349-2570 • surveyorsoffice@co.monroe.in.us

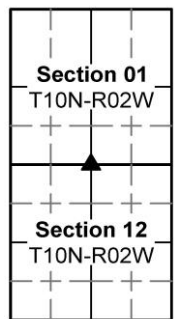


MONUMENT RECORD

Corner ID: **BeBI_W05**

Quarter Corner

Sections 1 & 12- T10N-R02W, 2nd P.M.
Bean Blossom Township, Monroe County, Indiana



Project #:

ORIGINAL OR SUBSEQUENT SURVEY EVIDENCE FOUND: *Include, search area or areas, search procedure, etc.*

Date of Field work/Search: 8/20/2020, 03/30/2021 By: CAR Monument Found: Stone BTs or Reference Objects Found: Section Corners 2020 Field Book: 54/12&30 Equipment: The basis of bearings is Grid North System NAD83(2011)/Indiana West NAVD 88, Epoch 2010.0000, geoid12b_conus.db3, US Survey Feet, derived from GPS observations utilizing the Indiana Real-Time Network (INCORS). Coordinate data was collected with a Javad Triumph LS Network Rover. Coordinates are available upon request. Distances to witness ties were collected with a Leica Disto laser distance meter. Bearings to witness ties were collected with the internal magnetic compass of the Javad Triumph LS and were automatically adjusted to grid north and are approximately shown hereon for reference. Priority should be given to provided distances over bearings. Notes: Returned to monument on 3/31 and collected one more witness (Witness C).

OTHER EVIDENCE: *Describe corner location relative to nearby features and how to reach the corner location – note fences, roads, timber cutting lines, mow lines, clearings, plantings, streams, topo changes, etc.*

The stone is located along a treeline with a field to the north and west. There is a t-post with a white PBC pipe covering it 0.2' north and another t-post 0.2' south of the monument with a Monroe County "Protect Nearby Survey Marker" sign 2.4' above grade facing north.

MONUMENT PRESERVATION: *Describe work done to preserve existing monument.*

Collected new coordinates and took new witnesses. Set t-post with Monroe County survey sign, spray painted the stone orange and tested with acid.

THEORY OF LOCATION: *Describe the theory of location for acceptance of this monument. Include monument origin and associated uncertainty.*

The Limestone 0.8'x0.8'x0.8' with "X" was previously witnessed and Monument Record prepared under the direction of the Monroe County Surveyor, Edmund O. Farkas. The Monument Record accepted the Limestone with "X" 0.8'x0.8'x0.8'.

CERTIFICATION:



OFFICE OF THE MONROE COUNTY SURVEYOR • Trohn Enright-Randolph

119 W 7th Street, Bloomington, IN 47404 • 812-349-2570 • surveyoroffice@co.monroe.in.us

Page 3 of 3

CORNER I.D.:

W - 5

MONUMENT RECORD

STATE OF INDIANA - COUNTY OF MONROE

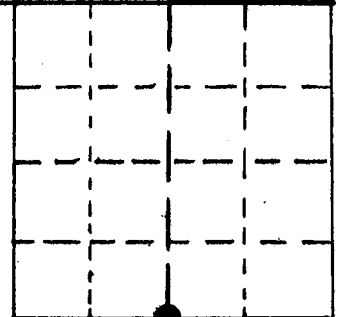
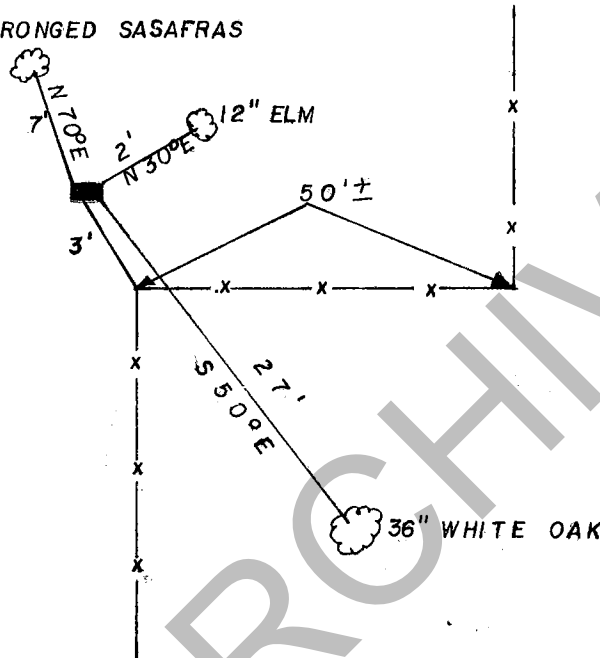
SECTION 1, TOWNSHIP 10 NORTH, RANGE 2 WEST

MONUMENT DESCRIPTION & REMARKS

STONE IS .8' X .8' STICKING UP .8'. STONE HAS A HARD TO
SEE "X". STONE IS AT EDGE OF FIELD WHERE FENCE JOGS.

RECOVERY TIE DRAWING

36" 3 PRONGED SASAFRAS



(•) AT CORNER



NOT TO SCALE

STATE OF INDIANA

COUNTY OF MONROE

I, EDMUND O. FARKAS HEREBY CERTIFY THAT THIS
DOCUMENT WAS PREPARED UNDER MY DIRECTION IN ACCORDANCE
WITH THE PROVISIONS OF SECTION 17-3-64-4 - 17-3-64-8 OF
THE INDIANA CODE, BEING ACTS OF 1965, CHAPTER 319; AND
THE ABOVE DATA IS GIVEN UNDER MY HAND AND SEAL
THIS _____ DAY OF _____, 19____ A.D.

SPACE
RESERVED
FOR
RECORDING
OFFICER.

INDIANA REGISTERED LAND SURVEYOR NO. _____

OR _____

UNITED STATES GOVERNMENT AGENCY

TITLE _____

TOWNSHIP:
BEAN BLOSSOM

CORNER I.D.

W - 5