

Fiscal Year 2013

End of Year Report



Youth Services Bureau of Monroe County

615 South Adams Street, Bloomington, Indiana, 47403

(812) 349-2506

Fax (812) 349-2892

www.youthservicesbureau.net

Table of Contents

INTRODUCTION

Mission & History	3
Accreditations	3
Divisions	4
Structure	5
Staff	6

YSB AGENCY REPORTS

Executive Director Report	7
YSB Service Inquiries	8
Binkley House Report	9
2013 Shelter Services	10
Clinical Coordinator	15
Project Safe Place	18
Outreach & Education	23
YSB Financial Data	24

OUR VOICE

Youth Served	26
Parent/Guardian Opinion	28
Staff Voices	29
Community Voices	30
Youth Satisfaction Surveys	31
Parent Satisfaction Surveys	36

RECOGNITION

Community Collaborations	39
--------------------------	----

SUPPORTING DATA

Statistical Data	40
------------------	----

Introduction

Our Mission:

To provide services, programs, referrals, and advocacy for youth
& community education on issues concerning youth.

Our History:

Since 1972, Youth Services Bureau of Monroe County has provided services in an effort to strengthen families, divert youth from the juvenile justice system, and to foster positive youth development. Family support and structure are necessary for the development of our community's youth. YSB offers services that foster positive family functioning and help lay the groundwork to build healthy, productive individuals.

Accreditation & Memberships:



YSB is an accredited Indiana Youth Services Association member. We fulfill the 4 core roles of delinquency prevention, advocacy, community education and information & referral¹ with our programs.

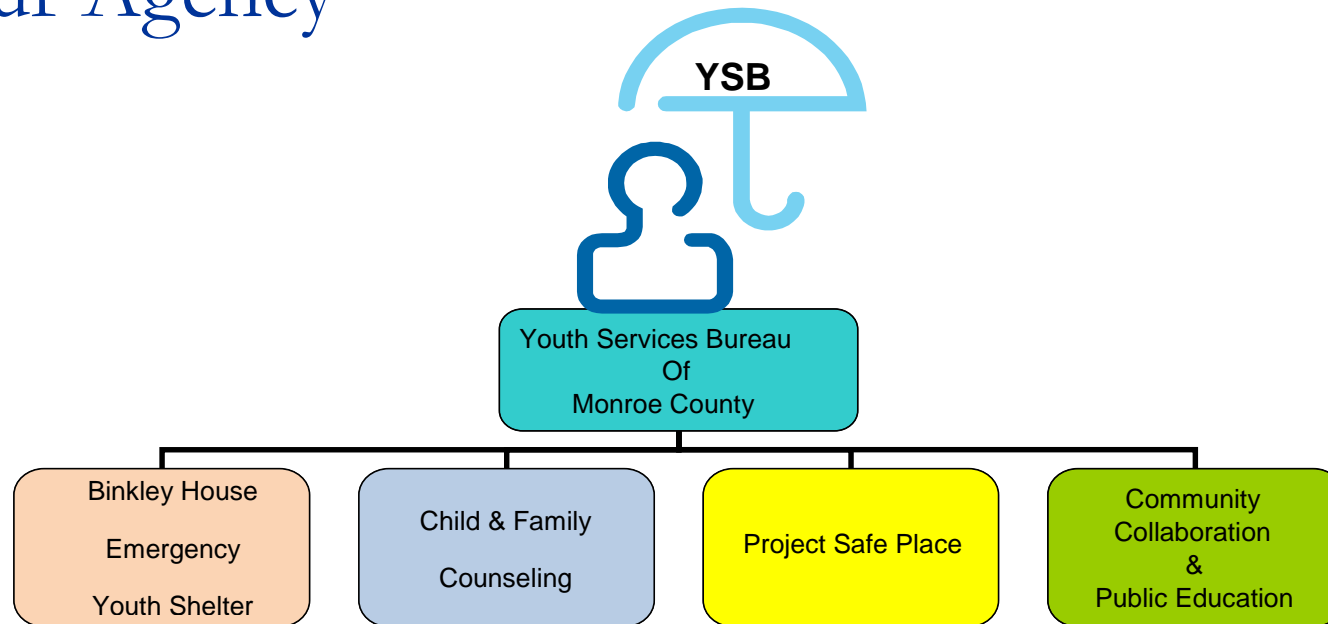


We are also an Indiana Association of Residential Child Care Agencies member. It is an association of concerned agencies who not only care for children and families, but also care about them.²

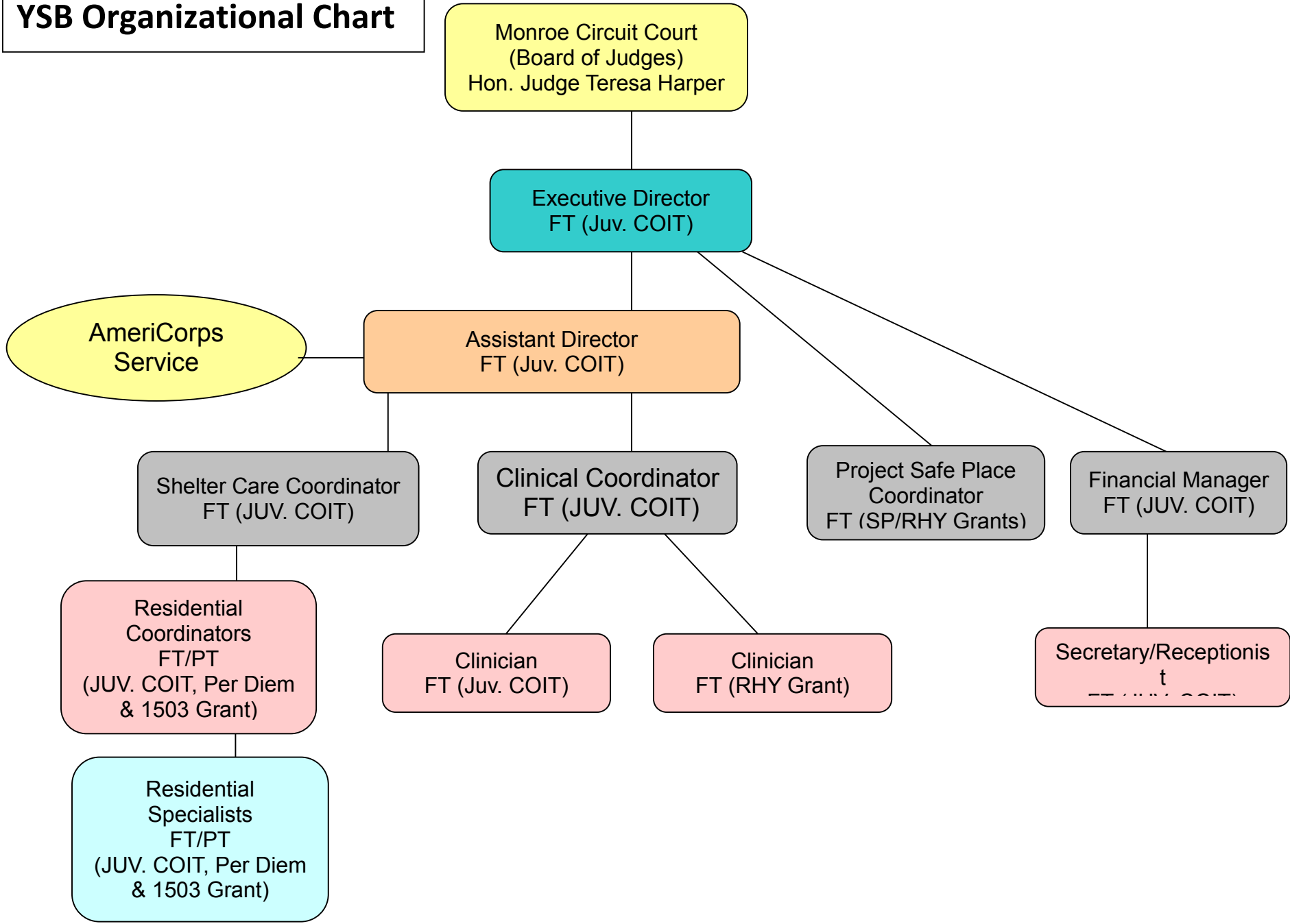
¹ <http://www.indysb.org/parents-youth/programs>, "four core roles"

² <http://www.iarcca.org/aboutus.html>

Our Agency



YSB Organizational Chart



2013 Youth Services Bureau Staff

Executive Director

Kim Meyer, MSW, LCSW

Assistant Director

Mark Delaney

Stacey McGauley, MSW, LCSW*

Administrative Support

Sarah Borden, Financial Manager

Sara Cooper, Administrative Assistant

Jennifer Dustin, Administrative Assistant*

Project Safe Place

Vanessa Schmidt, Coordinator

Clinical Team - Dave Torneo, MFT - Clinical Coordinator

Emma Ford, MSW, LCSW - Clinician

Allison Zimpfer-Hoerr, MSW, LSW - Clinician

Direct Care Team – Louis Malone IV, Shelter Care Coordinator

Residential Coordinators & Residential Specialist

Philip Anyeith	Allen Bell*	Theresa Brandenburg	Kayla DeMoss-Franklin
Justin Denney	Kelsey Erickson	Jamie Greig*	Laura Grover*
Becky Haagsma	Matt Hanauer	Amanda Hayes*	Theresa Hunter*
Katheryn Keating	Beth Kidd*	Kelly Kish	Nick Kojetin
Rebecca Lee	Beth Lefevers*	Sarah Mason	Kyle Mayes
Haley Miller-Sinn	Jenny Rizzo*	Amber Seals*	Michael Shanks
Richard Springer	Jackie Street*	Michael Stribling	Sparky Taylor*
Jessica Thomas*	Zach Wendell*		

AmeriCorps Service Member – Clemesia Beverly*, Sarah Roberts

Interns

Sarah Mason, BSW Intern	Natalie Calvert, BSW Intern	Chelsey Sivilie, Masters Intern
Meagan Benetti, Master Intern	Matt Powless, Masters Intern	Brandon Muncy, Master Intern

*Previously employed or interned during the 2013 year

The Executive Director's Report

Youth Services Bureau of Monroe County is pleased to state that we've continued to review and update our practices and policies married with our A.R.C. Framework. It is our primary trauma informed care model. Our ultimate goal is to help youth increase their capacity to form healthy **attachments**, develop skills to aid in **self-regulation**, and to master developmental skill **competency**.

A.R.C. provides a conceptual framework and core principles of intervention for working with youth who have experienced multiple and/or prolonged traumas. It has been a useful tool in understanding traumatized youth, guiding our interventions, and informing agency policy and practices. This model is central to all services with youth.

As we venture into 2014, trauma informed care approaches will continue to be a centralized approach in all aspects of our programming and services to youth and their families. We are ensuring that strength-based and positive approach to youth development continue to replace older, less effective models of practice with at-risk youth. We continue to assess outcomes in our services, which guide us in reflective analysis on the impact our services have upon those with whom we engage.

We have increased our connections for youth within the community which mutually benefit all parties. One such illustration was the partnership held on the Rain Garden project. We collaborated with the following entities: Monroe County Office of the Board of Commissioners, Monroe County Planning Department, Monroe County Parks & Recreation, Monroe County Highway Department – Storm Water Management, Autobahn Society and Kroger. Youth and community members came together to create a space that resulted in increased education, experience in role modeling from community members, and providing a setting of care and calm for our youth when the garden was complete.

Our goal for the 2014 year is to develop a fresh agency strategic plan focused on the best interest for the community that will carry us into the next 3 years.

As always, we invite you to watch us expand our capacity to collectively build the youth we are graced to know, regardless of how that young person may be entering through our doors!

Kimberly L. Meyer, MSW, LCSW

Executive Director

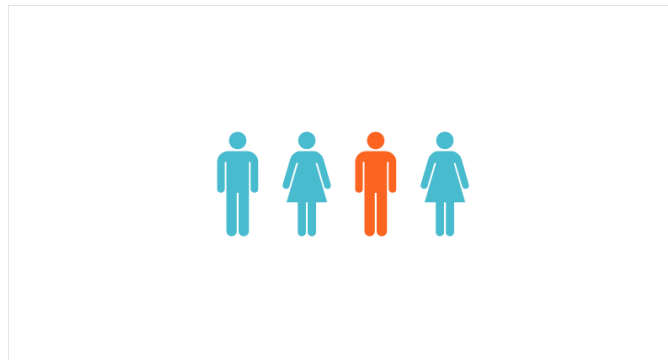
YSB Inquiries for Service, Regardless of Program Type

Inquiries for Service:

In 2013, we had 481 inquiries for service. On average, we can expect to receive approximately 48 calls a month. In general, the youth seeking our services are calling us in a time of crisis.

Of those calls:

- 120 were related to runaway youth
- 42 inquiries were from youth experiencing active homelessness. **Up 27% from the previous year.**



1 out of every 4 calls received were related to a need for services for a runaway or homeless youth.

Binkley House Emergency Youth Shelter

About Binkley House:

The Binkley House Youth Shelter is the largest division of YSB. It provides short-term emergency residential care and crisis intervention for youth ages 8-17. The shelter offers emergency shelter for runaways, homeless youth, and youth in crisis or abusive situations at home. Binkley House is a licensed Emergency Shelter Care Facility and follows all the rules and guidelines set forth by the Department of Child Services. Binkley House Emergency Youth Shelter remains the only shelter program for youth in the region of Monroe and its surrounding counties.

Binkley House is accessible 24 hours a day. We are not a “lock down” facility. Our building’s outer doors are locked to ensure the safety of staff and residents as well as to prevent intruders or unwelcomed guests. However, our internal doors are never locked. We do not utilize locked rooms, or seclusions and restraints on our shelter residents. We rely on plenty of structure and support for our youth to encourage positive behavior choices and safety for all. Binkley House provides services such as counseling, educational support time, supervised recreation, transportation to and from school, and other appointments, as well as referrals to a variety of agencies for related services.

YSB also assists with transitional services during a youth's stay at the Binkley House Youth Shelter. These include independent living skills, transition to long-term residential care, transition from long-term residential care back home, and short-term aftercare counseling. The youth shelter also serves as a respite resource for youth placed in foster homes to minimize foster care repeat placements.

The Youth Services Bureau of Monroe County does not charge a fee for the services provided for Safe Place or parental (voluntary by youth agreement) admissions. Referrals to the youth shelter can be made by other social service agencies, parents, or by the youth themselves.

Services Provided in Binkley House Emergency Youth Shelter

In 2013, we were able to provide safe shelter accommodations for 241 youth placements. Binkley House served 95 youth who had never before had contact or placement with Binkley House Youth Shelter. That is well approximately 40% of our total population served. When counting the total number of service days given to all youth in 2013, we provided 2,430 real-time⁴ days of service.

Our maximum licensed capacity is 15 youth. In 2013, our average daily population regularly consisted of approximately 7 youth, at any given time. It was not uncommon for us to operate near maximum capacity several times throughout the year.

MONTH	Total Bed Days
January	189
February	163
March	228
April	315
May	296
June	174
July	277
August	172
September	156
October	194
November	166
December	100
Total	2,430

The average length of stay for a youth in the shelter was approximately 10.4⁵ days in duration. In 2012, a legislative change occurred that limited the length of stay a youth can be provided at a licensed emergency youth shelter in the state of Indiana. The maximum length of stay for any youth (regardless of placement type) is 20 days⁶.

Binkley House Staff identified and reported 77 suspected cases of physical abuse, sexual abuse and/or neglect to the Indiana Department of Child Services' Child Protective Services unit⁷. This is approximately 32% of our youth served, a 15%

⁴ "Real-time" means that day in and day out are counted.

⁵ 2012 average was 10.1 days per youth

⁶ Per Dept. of Child Svc. rules, day out does not count, therefore real-time days are 21 in length.

⁷ 2012, 17.7% of population served;

increase from 2012. These reports were made due to self-report by youth, observed unusual marks/bruises, as well as observed abuse by guardian or other towards youth in our presence.

Youth who are residents at Binkley House are provided clinical (Master's Level counseling) support. In 2013, our clinical team provided a grand total of 3,324 counseling hours to shelter residents. Broken down, this is an average of at least 1.33 hours⁸ of clinical care⁹ per each resident per day in our care. Given that the average length of stay was 10.4 days, this equated to our agency providing a significant amount of direct clinical intervention to residents. *It was noted that the number of youth being served in Emergency Shelter Care in 2013 was slightly lower than in 2012. However, this resulted in an increase of individual clinical hours devoted to Emergency Shelter Care youth. This simply shows us that more one-on-one clinical time could be devoted to youth and families served, which increases likelihood of successful outcomes for families.*

This behavioral health service component (clinical counseling/case management) is not funded through the Indiana Department of Child Services contract for Emergency Shelter Care. We believe it is best practice and vital that youth and families engage in counseling while experiencing family crisis, regardless of the cost. While we seek grants to aid this critical link in services that facilitate improved family functioning, we would be remiss if we did not thank Monroe County for supporting our services!

Placement Types

Often, we break placements into types, or ways in which youth come to Binkley House Emergency Youth Shelter.

1. **Safe Place** – Youth initiate the desire to come for services at Binkley House Emergency Youth Shelter. There is no cost to the family for this service type. Length of this placement cannot exceed 72 hours, but may become another placement type if continued services are requested.

23 youth or 9.5% of the total shelter population (36 bed days).

2. **Parental** – A parent or legal guardian contacts Binkley House Emergency Youth shelter requesting youth services. In this instance, the youth must voluntarily agree to come to Binkley House Emergency Youth Shelter for short term placement. There is no cost to the family for this service type.

⁸ 3,324 hrs. /241 youth / avg. length of stay being 10.4 days

⁹ Individual, Family, Parent/Legal Guardian Counseling, psycho-educational group, life skills, treatment team planning and case management services.

163 youth or 67.63% of the total shelter population (1,685 bed days). This is an increase of 5% over the previous year.

3. **Probation** – Through court order, a youth is placed at Binkley House Emergency Youth Shelter to prevent delinquent behavior and promote pro-social behavior. Youth are accepted as court orders only if they pose no safety risk or harm to self or others. Results of court involvement typically come from truancy (not attending school consistently), return to the community from another environment, or preventative (assist youth in remaining free from negative influences until the youth can make better choices). YSB submits per diem claims to Indiana Department of Child Services (per that year's cost award). This is not billed to the family by YSB.

43 youth or 17.8% of the total shelter population (634.5 bed days).

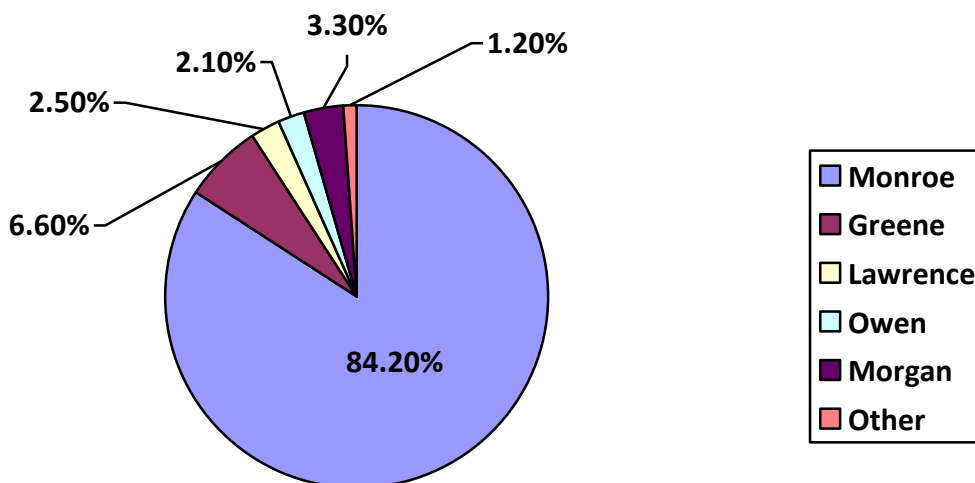
4. **Department of Child Services** – When a youth is a ward of DCS or is in an emergency situation in which the DCS Case Worker determines that emergency removal from a home is needed, a youth can be placed at Binkley House Emergency Youth Shelter. Typically, we host youth who are waiting for their homes to return to a safe level (after DCS interventions have been put in place), are awaiting foster care placement, or are in transition between homes. YSB submits per diem claims to Indiana Department of Child Services (per that year's cost award). This is not billed to the family by YSB.

7 youth or 2.9% of the shelter population (69 bed days).

5. **Police Hold** - To assist local law enforcement in returning to serve the public, there are occasions where Binkley House Emergency Youth Shelter will house a youth until a parent can be located to take custody of their child. These instances typically occur when law enforcement has come into contact with a youth and a parent/guardian cannot immediately respond to law enforcement to retrieve their child. These placements are typically less than 24 hours in duration. If a parent cannot be located within 24 hours, Binkley House contacts Child Protective Services to assist in family locating.

5 youth or 2.1% of the total Shelter Population (6 bed days).

Binkley House Emergency Youth Shelter serves youth from various counties of residence. Since we are housed in Monroe County, but serve surrounding counties, it is of no surprise that the majority of our residents served reside in Monroe County. It is important to note often the families we serve are transient. They have either lived in Monroe County in the past or currently live here. Monroe County is known for its many resources, and families often gravitate to this excellent community.



Placement Type * Place of Residence Cross-tabulation

2013		Place of Residence						Total
		Monroe County	Greene County	Lawrence County	Owen County	Morgan County	Other Indiana County	
Placement Type	Safe Place	23	0	0	0	0	0	23
	Parental	127	15	6	5	8	2	163
	Probation	43	0	0	0	0	0	43
	DCS	5	1	0	0	0	1	7
	Police	5	0	0	0	0	0	5
	Total	241	16	6	5	8	3	241

Gender

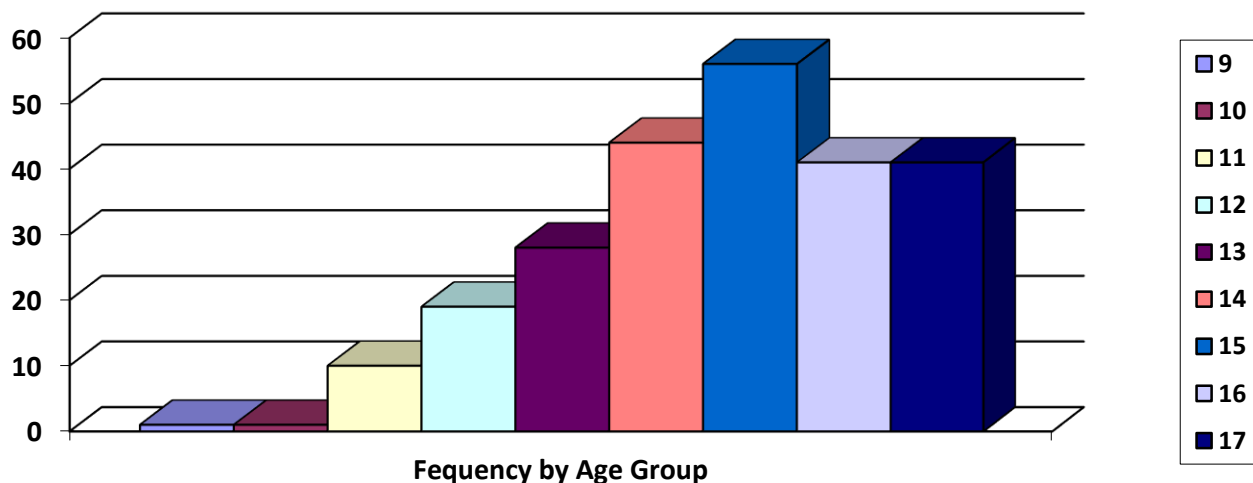
Binkley house is a co-ed shelter with separate male and female sleeping wings attached to the common areas.

In 2013, 57% of our residents were male and 43% were female.

We served 1 youth on multiple placements who identified as transgendered (male identifying as a female). YSB staff is trained on LGBTQ Homeless Youth issues and work to ensure a safe and comfortable environment for all youth. Safe and reasonable accommodations were made for this youth as well as education and support given to other youth who found this experience to be difficult to understand.

Age Range

Binkley House serves youth between the ages of 8 and 17 years of age. Of this age group, the normative age range of youth in 2013 was between 14 and 17 years. Compared to previous years, we continue to see an increase in service to youth between the ages of 11-14 with services to youth age 14 more than doubling.



Clinical Coordinator's Report

The Youth Services Bureau Masters level Clinical staff of Allison Zimpfer-Hoerr, Emma Ford, Dave Torneo and our Indiana University interns continues to provide free counseling to Monroe County and surrounding counties. They utilize a trauma-informed approach, supplemented by collaborative problem solving, along with the goal of introducing youth to pro-social community organizations and activities. Our primary focus is to provide services to residents of the Youth Shelter, but we also accept home-based referrals. Our home-based case load consists of youth and adults ages 8-22 years of age who may or may not have been placed in the Youth Shelter. We do our best to accommodate all referrals by going to the home when necessary or when it is determined to be the most effective means of reaching positive rapport. The counseling staff will meet with families during times that best suit them keeping in mind travel distance, work schedules, financial stress, and the reasons the family has chosen to place a youth in the Shelter.

The relatively streamlined process of placing a youth in the Shelter or initiating counseling services makes our agency unique and a more inviting entry for a family that has had negative experiences in the past or is unsure if this is the route they want to take. Historically, the Shelter has often been the counseling service of choice for the underserved population of our community.

The Youth Services Bureau is well on its way in its move to a bureau-wide application of Trauma Informed Care. Our goal is to be sensitive to the unique needs of each youth and family we encounter. Trauma Informed Care takes into consideration the history of abuse an individual has had to endure. It is essential that our staff understands that the brain responds to a history of trauma in different ways. We all adapt to trauma in ways that seem the best at that time. A youth may develop coping skills that are acts or choices of survival but not necessarily behaviors that are acceptable for everyday living. We are creating a program which supports the youth while modeling patience, compassion, and guidance.

We have implemented the *Binkley House 5 Finger Agreement* as a visual reminder and guide to the expectations of the Youth Shelter. The primary expectations are **Safety, Commitment/Responsibility, Respect, Follow Directions**, and **Try Your Best**. The *5 Finger Agreement* is referred to by Direct Care staff and counselors to help youth re-focus and better meet their agreed upon goals during their Shelter stay. We feel that our expectations transfer to what our community supports and encourages all of us to incorporate in our lives in both the work place and relationships.

The Clinical team has also adopted a new tool: the *Discharge Plan*. This new tool encourages each youth and family to collaborate on a plan to be implemented when the youth exits the Shelter. The Plan encompasses goals, responsibilities, places of safety, places the youth should avoid, needs of the youth, and resources for the family after exit. This is a proactive approach that encourages a co-creative approach. It is our hope that all parties give their input. For example, if a youth is placed by an outside agency, the case-worker or probation officer is included in the plan as well.

A key component of our approach to advocating, educating and supporting youth and families is in our daily Focus schedule which introduces youth to community programs and events. We feel that by encouraging kids to get involved and modeling our own enthusiasms, they may become engaged self-agents with a passion for gardening, books, community service, or any of the various contacts and collaborations we have cultivated over the years. The following are a few of our community partners: Mother Hubbard's Cupboard, Hoosier Hills Food Bank, Middle Way House, Planned Parenthood, IVY Tech, and Bloomingfoods. In 2014 we have plans to explore and expand partnerships with Pages to Prisoners, the Indiana University MFA Writers Program, and Bloomington Atelier Book Arts.

To expand upon the area of advocacy, our counselors continue to attend court hearings, school meetings, Monroe County Probation meetings, join Wrap Around teams, and work closely with other agency representatives when appropriate. To be an effective advocate during times of crisis, we feel the key responsibilities of a Shelter counselor are to respect each family, be an active listener free of judgment, be supportive, and educate whenever necessary.

Dave Torneo, MFT, Clinical Coordinator



(Art work: Contributed by Binkley House resident collaboration)

Services Provided by Child & Family Counseling Services

We provide intensive family counseling at no cost to families who are at risk of abuse, neglect, or youth at risk of running away. YSB is an active participant in **Wrap Around**, a program that tailors local social services to a family's needs through collaboration among various agencies who have reviewed each family's specific situation. Whenever feasible, maintaining the family unit as a functional entity is our goal. Family preservation is always the preferred outcome.

Families Served: 25 youth and their families/system of support

Clinical Services Provided: 515.25 hours of service

Types of Services Provided:

- Initial Assessment & Treatment Planning
- Individual Session
- Family Sessions
- Guardian/Support Network Sessions
- Treatment Team Collaboration
- Advocacy
- Discharge Planning
- Referral to Other Community Resources for Continued Success, as needed.

Project Safe Place Coordinator Report

Project Safe Place is a national youth outreach program educating thousands of youth every year about the dangers of running away, trying to resolve difficult or threatening situations on their own. This easily-replicated initiative involves the whole community to provide safe havens and resources for youth in crisis.

Safe Place creates a network of Safe Place locations such as schools, fire stations, libraries, grocery and convenience stores, public transit, YMCAs and other appropriate public buildings. A Safe Place location can be identified by the yellow and black diamond-shaped Safe Place sign. These locations extend the doors of the youth service agency or emergency shelter throughout the community. Youth can easily access immediate help in any Safe Place location.

The local Safe Place program serves Monroe, Owen and Greene counties and reaches out to over 10,000 youth each year helping to create awareness and accessibility to the program. Through our 131 designated Safe Place sites (85 physical, 46 mobile), youth can easily seek and access the help of the Safe Place program. Each youth may enter or call a Safe Place for many different reasons, rather it be abuse, bullying, being lost and afraid, and/or trying to process a crisis. All youth accessing the program are provided with immediate help, resources and a safety net of supportive services.

Safe Place is everywhere! Awareness is a key concentration for the program and each year we look for innovative ways of educating the community. In 2013, we participated in 12 community events centered on youth. Some of these events include the Broadview Family Fair, the Monroe County Fair, Bloomington Housing Authority Family Day, and National Runaway Prevention Month. In early 2013, through a collaboration of efforts a local Safe Place commercial was created and shown on local networks and social media. The Safe Place program facilitated a billboard contest with all Edgewood Intermediate 5th graders with one poster chosen and displayed as a billboard in the Ellettsville area for a 5 week period.

Under the umbrella of Youth Services Bureau of Monroe County, the Safe Place program participates in the annual **Homeward Bound Walk against Homelessness**. In 2013, we were able to generate awareness and secured over \$1500 in funds raised. We received over \$1,800 in in-kind donations for youth residing in the emergency shelter.

Looking into 2014, we remain focusing on awareness, outreach and providing preventative services. We strive to provide immediate interventions to address issues at the earliest possible stage of a crisis. We will also continue to look for innovative ways to connect with the youth and adults in the community, while informing them of the Safe Place program.



Vanessa Schmidt, Project Safe Place Coordinator

2013 Outcome Measures for Project Safe Place

60 Youth Served in 2013

28 youth accessed Shelter services as intervention

32 youth accessed counseling assistance only as intervention

Number of youth reached through presentations – 13,850	
Schools	5,225
Monroe County Fair	2,800
Community Presentations	5,825

Number of adults reached through presentations – 2,755	
Schools	450
Monroe County Fair	1,300
Community Presentations	1,005

Number of Safe Place Sites	
85 physical sites & 46 mobile sites	
Monroe County	67
Owen County	7
Greene County	11
Bloomington Transit - Library Bookmobiles	44 – 2

2013 Safe Place Sites

<u>Store Name</u>	<u>Address</u>	<u>City</u>
Bloomington Transit (actual building)	130 W. Grimes	Bloomington
Bloomington Transit - 44 buses	mobile	Bloomington
Allison Jukebox	349 S Washington Street	Bloomington
Banneker Community Center	930 W. 7th St.	Bloomington
Rhinos Youth Media Center	331 S. Walnut Street	Bloomington
CVS Pharmacy	444 W. State Rd. 46	Bloomington
Guardian Martial Arts	701 W Popcorn Road	Bloomington
Wonderlab	308 W. 4th St.	Bloomington
YMCA	2125 S. Highland	Bloomington
#1 Fire Dept.	300 E. 4th St.	Bloomington
#3 Fire Dept.	900 N. Woodlawn	Bloomington
East Fire Dept.	2001 E. 3rd St.	Bloomington
Ellettsville #8 Fire Dept.	900 N. Curry Pike	Bloomington
Ellettsville Headquarters Fire Dept.	5080 W. St. Rd. 46	Bloomington
Linton Fire Dept.	City Hall 46 NW A Street	Linton
South #5 Fire Dept.	1987 S. Henderson	Bloomington
Stinesville Fire Dep.	7951 W. Main St.	Stinesville
Van Buren Fire Dept.	2130 Kirby Rd.	Bloomington
Clear Creek Township Office	9206 S. HW 37	Bloomington
United States Postal Service – Post Office	3218 S. Street	Quincy
Kroger Jackson Creek	1175 S. College Mall Rd	Bloomington
Kroger West- Highland Village	500 S. Liberty Dr.	Bloomington
Lakeside Market	6050 Indiana 45	Bloomington
Eastern Greene County Library	RR #4 Box 388	Bloomfield
Greene County Library	125 S. Franklin St.	Bloomfield
Monroe County Ellettsville Library	600 W. Temperance	Ellettsville
Monroe County Library Bookmobile	303 E. Kirkwood (2 buses)	Bloomington
Monroe County Main Library	303 East Kirkwood	Bloomington
Meadows Behavioral Care	3600 N. Prow Rd.	Bloomington
Harley Davidson North	522 W. Gourley Pike	Bloomington
Arby's Linton	1600 NE A Street	Linton
Arby's South	535 S. Walnut	Bloomington
Arby's West	3300 W. 3rd St.	Bloomington
Bloomington Bagel Co.	113 N. Dunn	Bloomington
Crossroads Cafe	1411 N State Rd 45	Solsberry
Pizza Express Campus	1791 E. 10th St.	Bloomington
Pizza Express East	877 S. College Mall Rd.	Bloomington
Pizza Express	4621 W. Richland Plaza	Bloomington
Pizza Express South	2443 S. Walnut Pike	Bloomington
Pizza Express West	1610 W. 3rd. St.	Bloomington
Arlington Elementary School	700 W. Parrish Rd	Bloomington
Batchelor Middle School	900 W. Gordon Pk.	Bloomington
Binford Elementary School	2300 E. 2nd St.	Bloomington

Bloomington North High School	3901 N. Kinser PK	Bloomington
Bloomington South High School	1965 S. Walnut St.	Bloomington
Bloomington Project School	349 S. Walnut	Bloomington
Childs Elementary School	2211 S. High St.	Bloomington
Clear Creek Elementary School	300 W. Clear Creek Dr.	Bloomington
Eastern Elementary School	Rt 4 Box 623	Bloomfield
Edgewood Elementary & Primary Schools	7700 W. Reeves	Ellettsville
Edgewood High School	601 S. Edgewood Dr.	Ellettsville
Edgewood Intermediate School	7600 W. Reeves	Ellettsville
Edgewood Jr. High School	851 West Edgewood Road	Ellettsville
Fairview Elementary School	627 W. 8th St.	Bloomington
Gosport Elementary School	201 N. 9th St.	Gosport
Grandview Elementary School	2300 S. Endwright Rd.	Bloomington
Highland Park Elementary School	900 Park Square Dr	Bloomington
Jackson Creek Middle School	3980 S. Sare Rd	Bloomington
Lakeview Elementary School	9090 S. Stain Ridge	Bloomington
Linton-Stockton Elementary School	900 NE 4th St	Linton
Linton-Stockton High School	109 N.E. H St	Linton
Marlin Elementary School	1655 E. Bethel Ln	Bloomington
McCormick Creek Elementary School	1601 Flatwoods Rd.	Spencer
Owen Valley Middle School	626 W. State Highway 46	Spencer
Owen Valley High School	622 W. SR 46	Spencer
Patrickburg Elementary School	9883 State Road 246	Patrickburg
Rogers Elementary School	2200 E. 2nd St.	Bloomington
Shakamak Elementary School	RR2 Box 42	Jasonville
Shakamak Jr High/HS School	RR2 Box 42	Jasonville
Spencer Elementary School	151 East Hillside Ave.	Spencer
Stinesville Elementary School	7973 W. Main St.	Stinesville
Summit Elementary School	1450 W. Countyside Ln	Bloomington
Teen Learning Center	705 W. Coolidge Dr.	Bloomington
Templeton Elementary School	1400 S. Brenda Ln	Bloomington
The Edge Alternative High School	319 W. Temperance St	Ellettsville
Tri-North Middle School	1000 W. 15th St.	Bloomington
Unionville Elementary School	8144 E. State Rd. 45	Unionville
University Elementary School	1111 N. Russell Rd	Bloomington
Worthington Elem/Jr. High School	484 W. Main St	Worthington
Youth Services Bureau of Monroe County	615 S. Adams St.	Bloomington
Big Brothers/Big Sisters	418 S. Walnut	Bloomington
Boys and Girls Club - Crestmont	1108 W. 14th	Bloomington
Boys and Girls Club - Downtown	311 S. Lincoln	Bloomington
Boys and Girls Club of Ellettsville	200 E Association Street	Ellettsville
Girls, Inc.	1108 West 8th St.	Bloomington

Project Safe Place in the Community...

The Children's Expo



The Monroe County Fair



Broadview Fall Fest



Outreach & Education

Youth Services Bureau of Monroe County participates in various events and forums to enhance our outreach and education of our programs within the communities we serve.

Outreach most often comes in the form of education through the Project Safe Place Program. When youth, community and businesses are educated about Project Safe Place, further discussion of Binkley House Emergency Youth Shelter services are always a part of this discussion.

In 2013, we participated in the following events at the local, state and national level:

- National Runaway & Homeless Youth Conference (Atlanta, Georgia) - Activities to Challenge & Engage RHY Staff
- Monroe County Fair – Project Safe Place Booth and YSB Services
- Monroe County Citizen’s Academy – Education on all YSB Services
- Monroe County Council Meetings – Discussion of services when funding/grants are approved
- Monroe County Commissioner Public Meetings – Discussion of service related to request for contract approvals
- Indiana University – School of Public Health – Discussion of services when speaking to the Professional Development Classes
- Bloomington High School North

Intro to Teen Peer Advocate Program

Approaches to Helping

- News, press releases and social media postings on various activities at YSB
- Collaboration with New Tech (now “The Academy”) regarding education to youth on the following topics:

Communication Skills Enhancement

Building Consensus

Team Building

Trust & Support

Reflection & Appreciation

- Collaboration with Bradford Woods - Identifying Stressors and Coping Skills
- Ivy Tech Community College Bloomington - Adolescent Services, YSB, and Safe Place Program
- Grand Traverse, Michigan - Foster Care Unit Team Building

2013 YSB Funding Sources

Funding Name	Source	Amount	% of total funding
Juvenile County Option Income Tax	Monroe County	\$693,465	71.85%
Department of Child Services 2013 Contract for Emergency Shelter Care (Per Diems)	Indiana Department of Child Services (state reimbursement)	\$132,627	13.74%
Federal RHY Grant (9/30/12 – 9/29/13)	Federal Reimbursement	\$113,150	11.72%
State DCS 1503 Youth Services Bureau Grant (7/1/12 – 6/30/13 and 7/1/13 – 6/30/14)	Grant – State Reimbursement	\$9,805	1.02%
Federal Department of Education Lunch Money Program	Federal Reimbursement	\$5,220	0.54%
State DCS 1504 Safe Place Grant (7/1/12 – 6/30/13 and 7/1/13 – 6/30/14)	Grant – State Reimbursement	\$9,467	0.98%
YSB Donation Fund	Private Donations	\$889	0.10%
Martin Luther King, Jr. Grant	City of Bloomington Grant	\$500	0.05%
TOTAL:		\$965,123	

In-Kind Contributions		
Donated Items	Toiletries, shelter supplies	\$4,026.48
BSW Intern	590 hours	\$10,620
AmeriCorps Service Member	165.5 hours	\$2,979
Master's Level Interns	1,962 hours	\$38,239.38
Installation of Rain Garden	32 hours	\$689.92
TOTAL:		\$56,554.78

Juvenile County Option Income Tax (Juvenile COIT)

- The Juvenile COIT is YSB's main funding source, while funding the majority of operating and personnel costs for the organization.

DCS Per Diems

- DCS per diems are a state reimbursement for all court-ordered and DCS placed children. In 2013, YSB received \$272.31 per child per day. This source fully funds seven of the nine fulltime direct care shelter workers.

Runaway and Homeless Youth (RHY) Grant

- The Runaway and Homeless Youth Grant is through the Federal Department of Health and Human Services, and fully funds the Safe Place/YSB Shelter Outreach Coordinator and one of the two counselors, along with a small stipend for training.

1503 Youth Services Bureau Grant

- The 1503 YSB Grant is administered through the state Department of Child Services, and has traditionally funded a portion of hourly direct care shelter workers and a small stipend for training.

Federal Lunch Money Program

- The Lunch Money Program is through the Department of Education, and supplements the cost of providing meals and snacks to the shelter residents.

1504 Safe Place Grant

- The 1504 Safe Place grant is administered through the state Department of Child Services, and fully fund operational and outreach costs for the Safe Place Program.

YSB Donation Fund

- The donation fund is where all private donations made to YSB are deposited.

Martin Luther King, Jr. Grant

- This is a small grant awarded by the City of Bloomington's Martin Luther King, Jr. Commission that funds a portion of the cost to develop and maintain the fruit and vegetable garden at the shelter.

Sarah Borden, Financial Manager

What Youth Served Want Others to Know

"It's a helpful place for youth in need."

"It was very inviting and was there when I needed a place to go."

"I think the Shelter is a place where kids can be safe and not a punishment."

"I learned to better cope with life skills."

"It is a safe place where you can get help with personal or family problems."

"It's a place that is a safe alternative to running away, and the staff are awesome."

"The counselors and shelter staff are great support."

When asking Youth...

"Would you tell other youth about our program?"

"Everyone was super helpful and listened, I think it's a great place to go if you're in trouble with nowhere to go or just can't go."

"The shelter is very helpful for many different kids and personal problems."

"It helped me understand. It's a very good place to keep me calm."

"Yes, this place really helped me with my problems."

"Yes, because it helps you with your behavior and gives you a life lesson."

"You guys (YSB staff) are kind and caring toward us."

What Parents/Guardians Say...

"We were very impressed. The counselor conducted very good interviews and was a great listener."

"They had great insight for our son and us, as parents."

"They helped me a lot to open up and get the help me and my son needs."

"It was nice having her to be there to mediate and bring another perspective for us to see."

"My daughter was able to express some thoughts and feelings that were very helpful for me to know."

"It was great to have someone to talk to about the issues going on. The follow-ups will be a great help."

"Great opportunity for our daughter to be heard and receive caring, unbiased feedback."

"I'm very impressed with this state's willingness to help instead of condemn. "

"It is very awesome and provided care in reality, and not some juvenile detention."

"I am grateful that these services exist and hope that proper funding and resources are available for the facility."

Our Voices, Our Staff

“I support YSB because...”

“...the work I get to do with the kids is extremely rewarding for me. This environment supports me as a person! It demands my attention, my focus, and dedication to meeting the needs of our communities youth...it keeps me accountable! The support I receive goes way beyond the things that are tangible! We may not always see immediate results with the work we do but seeds are being planted!”

- **Ms. Becky, Residential Care Worker**

“...my sister was placed in foster care for a year. Being from a different community, if we would have had access to such community based services as a local youth shelter I think that could have been avoided altogether, and lessen the trauma my sister experienced being placed outside the home.

- **Mr. Mark, Assistant Director**

“...we play an essential role in the lives of many of the youth and families of Monroe County and beyond by providing a safe place safe guarded by compassionate and caring adults.

- **Mr. Dave, Clinical Director**

"... I get the reward of seeing how the work we do improves the life experience of so many people- from the Youth and their families to, ultimately, the entire community. I am proud to be a member of the YSB family. I am so fortunate! I can go to my job confident that I am part of a larger team always focused on helping others. "

- **Ms. Rebeka, Residential Care Worker**

“...we provide a Safe Place for youth in crisis and are an instrumental part of the local safety net for youth.”

- **Ms. Vanessa, Project Safe Place Coordinator**

What Community Stakeholders Say:

Bloomington Meadows Hospital is an advocate and supportive of the Youth Services Bureau of Monroe County. YSB is compassionate about our community, they care about our kids, they make an ongoing difference in the lives of the families and children in our community which is evidenced by keeping kids safe, offering an alternative to being on the street, in an unwanted power struggle, as well as given a chance to calm and correct and all with a relationship building approach. YSB is an integral part of our community approach to care.

Jean W. Scallon, MA FACHE, CEO, Bloomington Meadows Hospital

I support YSB, because it offers essential emergency services to youth and families in need. The respite, counseling and mentorship provided by YSB empowers youth take responsibility for their present circumstances, make positive and productive choices, and develop a sense of control regarding their future. Monroe County is blessed to have such a dedicated organization and youth workers committed to serving and empowering youth who are most in need.

Brenda Salvo, Director, Boys and Girls Club of Ellettsville

I support YSB because it is both an essential resource and place of solace for youth in need, and an invaluable community partner for other youth-serving organizations.”

Chris Hosler, Adult & Teen Reference Librarian, Monroe County Public Library

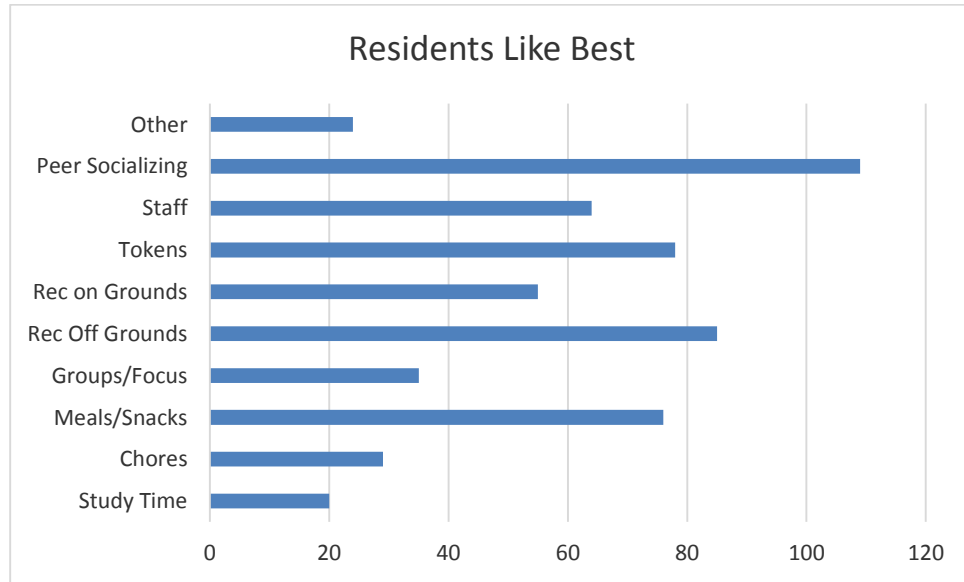
I support YSB because Bloomington and the surrounding communities need services and supports for youth and their families. A community that meets the needs of their children thrives. A program like Safe Place provides a way of connecting youth with services and incorporates the businesses in our community. Ivy Tech Community College is a proud partner with Project Safe Place and is happy to do our small part in ensuring the safety of youth.

Dr. Lisa Connolly, Human Services Program Chair, Ivy Tech - Bloomington

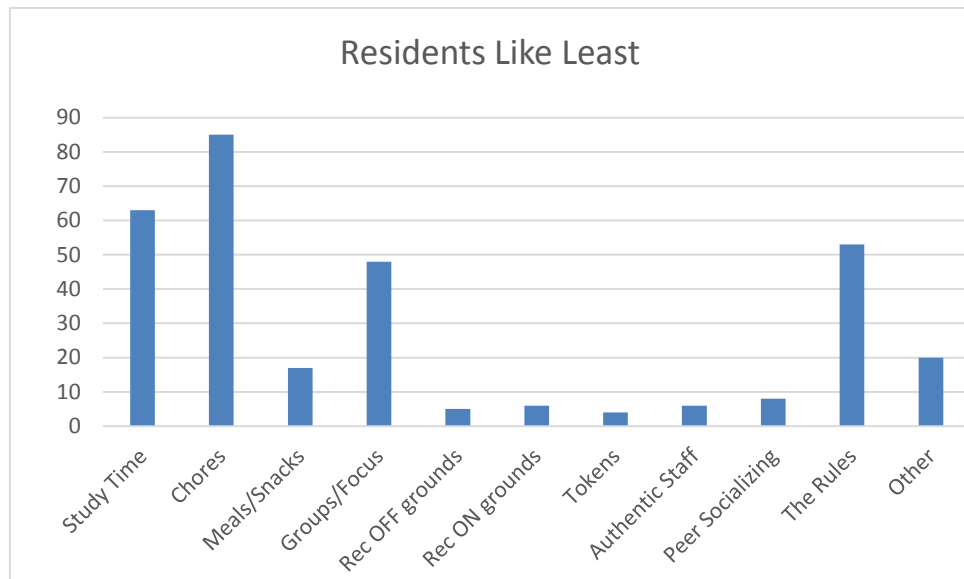
I support YSB because, the agency is a huge supporter of undergraduate service-learning and internship programs for human development and family studies students as well as youth development majors. The YSB has supported our program for over 10 years, not only in providing practical experience for our students as they make the transition from college to career, but in hiring those who meet the qualifications to become employees. Assisting student and new college graduates in starting their career and making a difference for youth has been a wonderful outreach for YSB, with IU Human Development & Family Studies students being the beneficiaries.

Maria K. Schmidt, Assistant Professor, Applied Health Science, Indian University

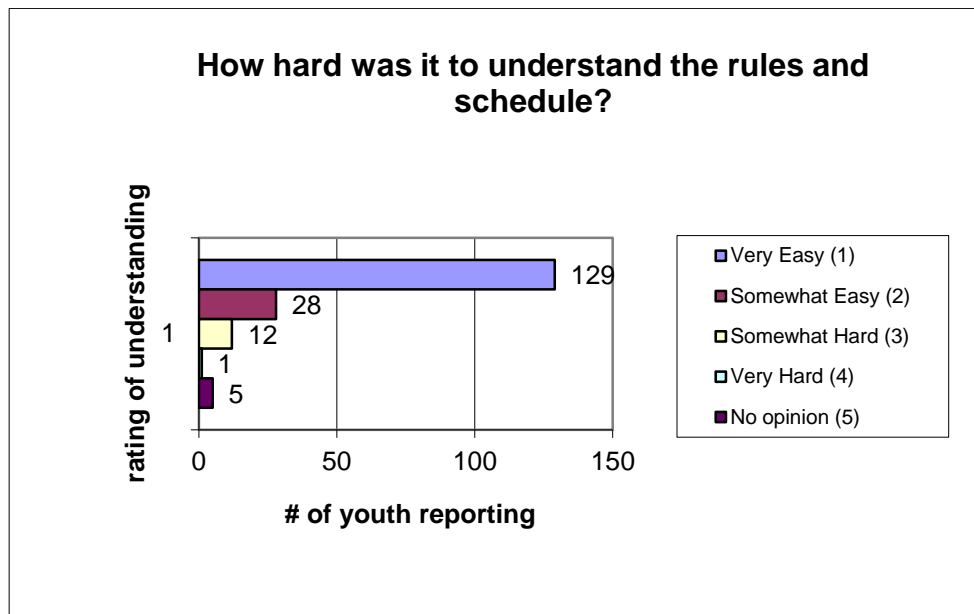
Shelter Youth Surveys for 2013



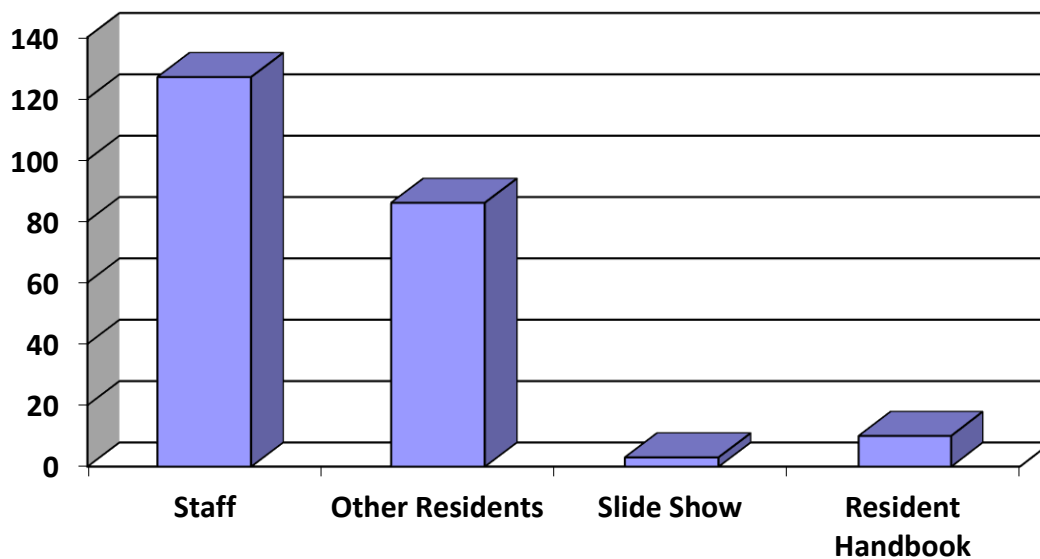
Youth most appreciated the ability to safely socialize with other



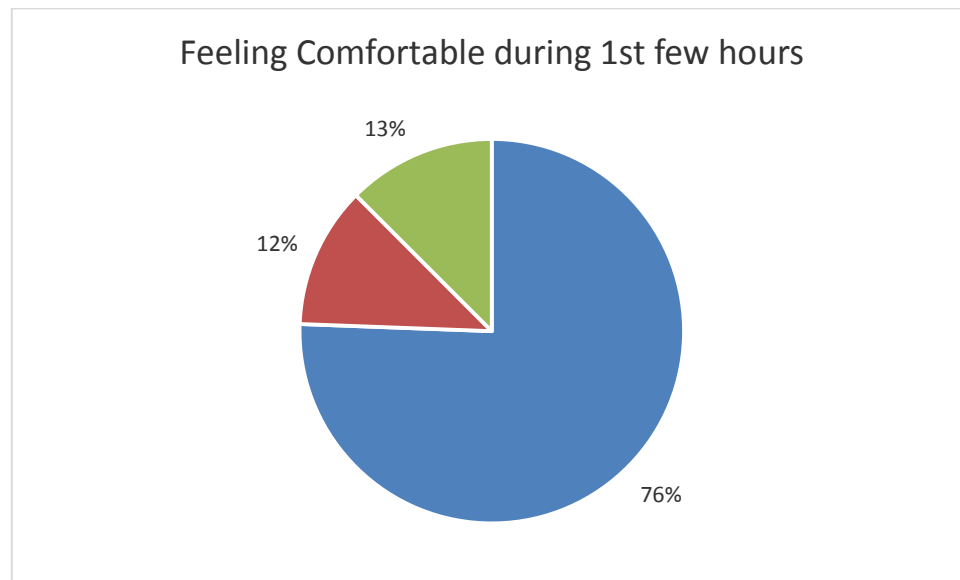
As was to be expected, youth least enjoyed structured study time and chores



The majority of youth report that understanding the rules and schedule was easy.



Staff and other residents were most helpful in explaining the rules/schedule.



76% report feeling comfortable within the 1st few hours
12% report feeling not comfortable
13% were undecided

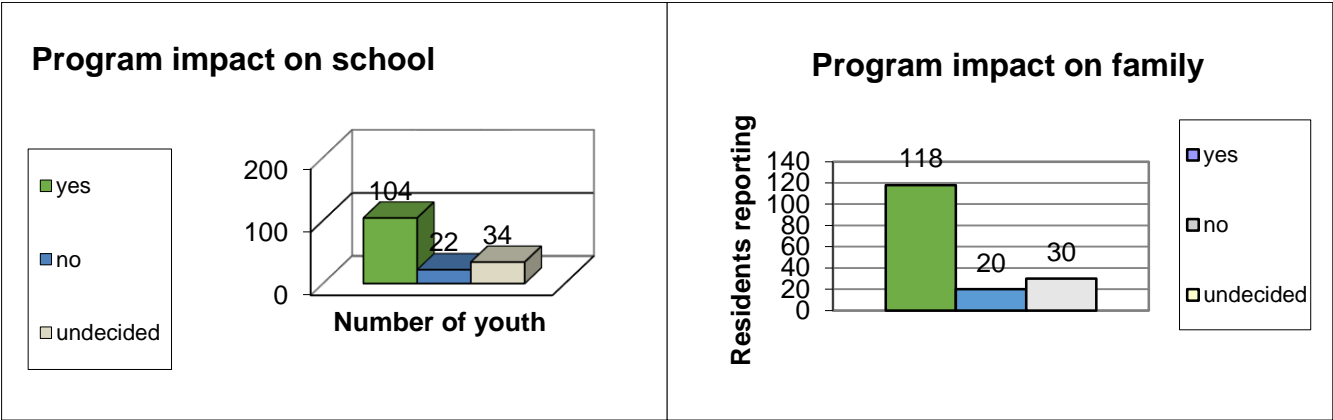
Why they reported feeling comfortable:

- Feeling safe
- Knowing people
- People being nice or welcoming
- Other residents were nice
- Staff were comforting
- No one was mean to me

Why they NOT feeling comfortable:

- Being "new"
- Feeling scared
- Not being used to the place
- Feeling homesick

Youth Self-Report on Positive Direct Impact

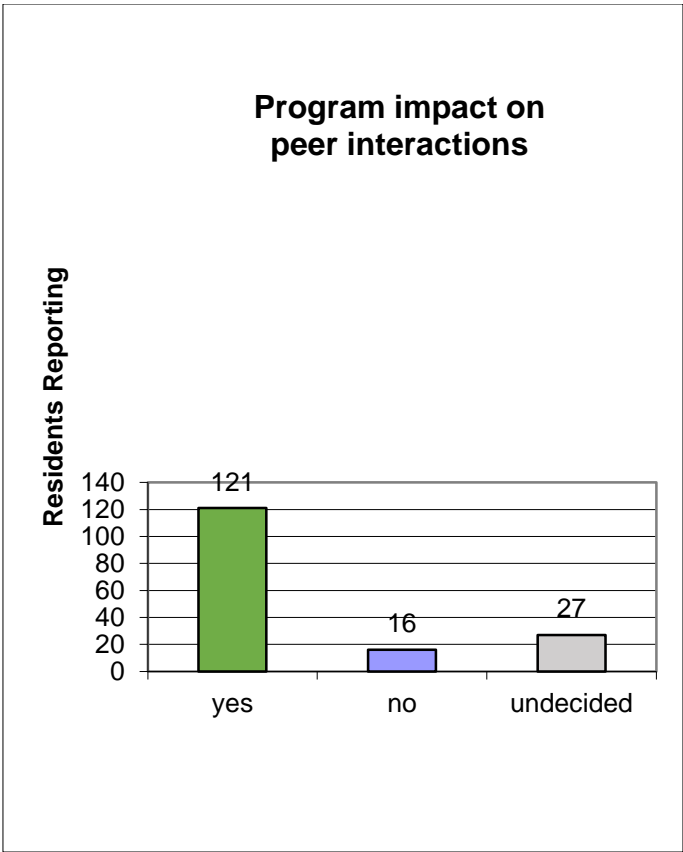


65% report positive impact on school

21% were undecided

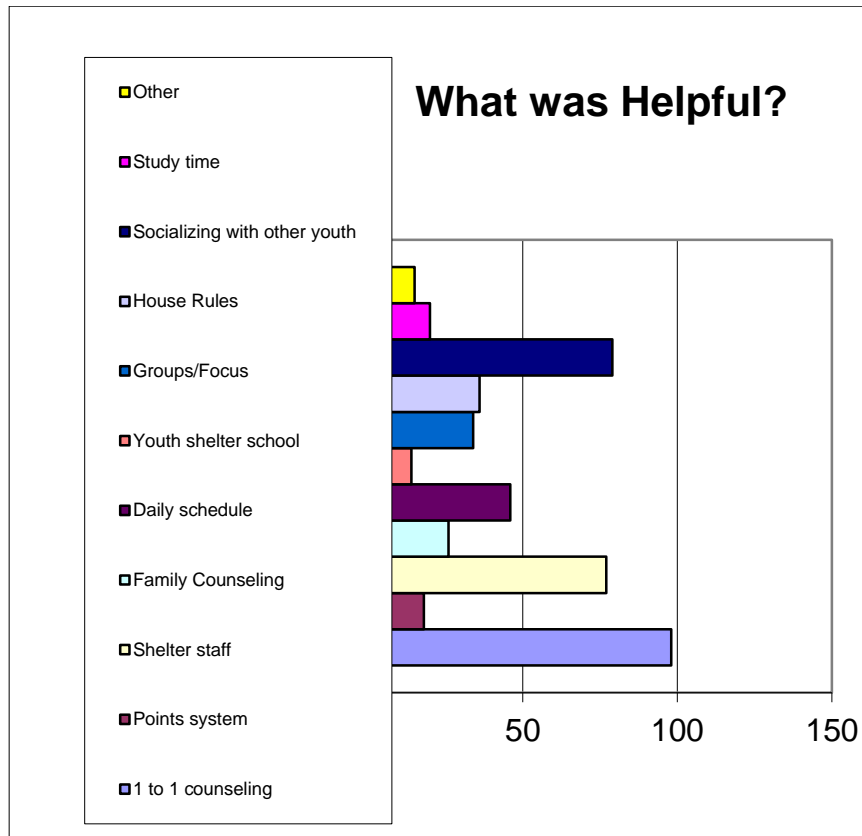
70% report positive impact on family

18% were undecided

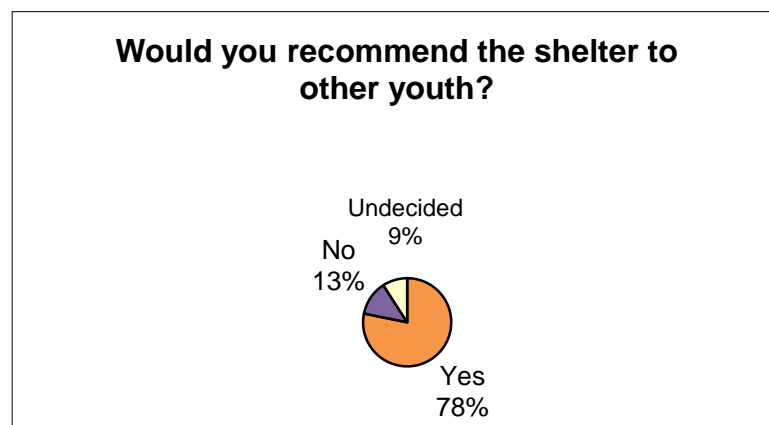


74% report positive impact on peer relationships

16% were undecided

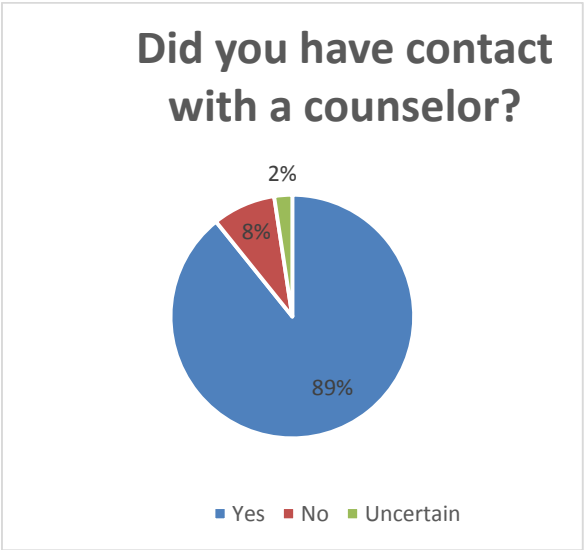


1 to 1 counseling, shelter staff and socializing with other youth were most helpful in making changes and dealing with issues



Most common response on why or why not: "It depends on the situation"

2013 Parent/Guardian Surveys (Counseling Offered for Shelter Residents)

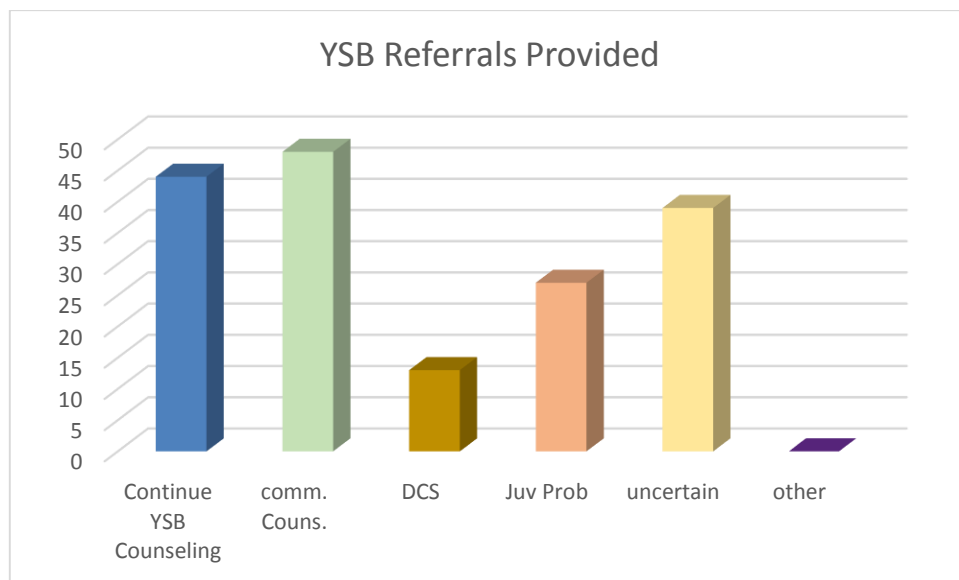
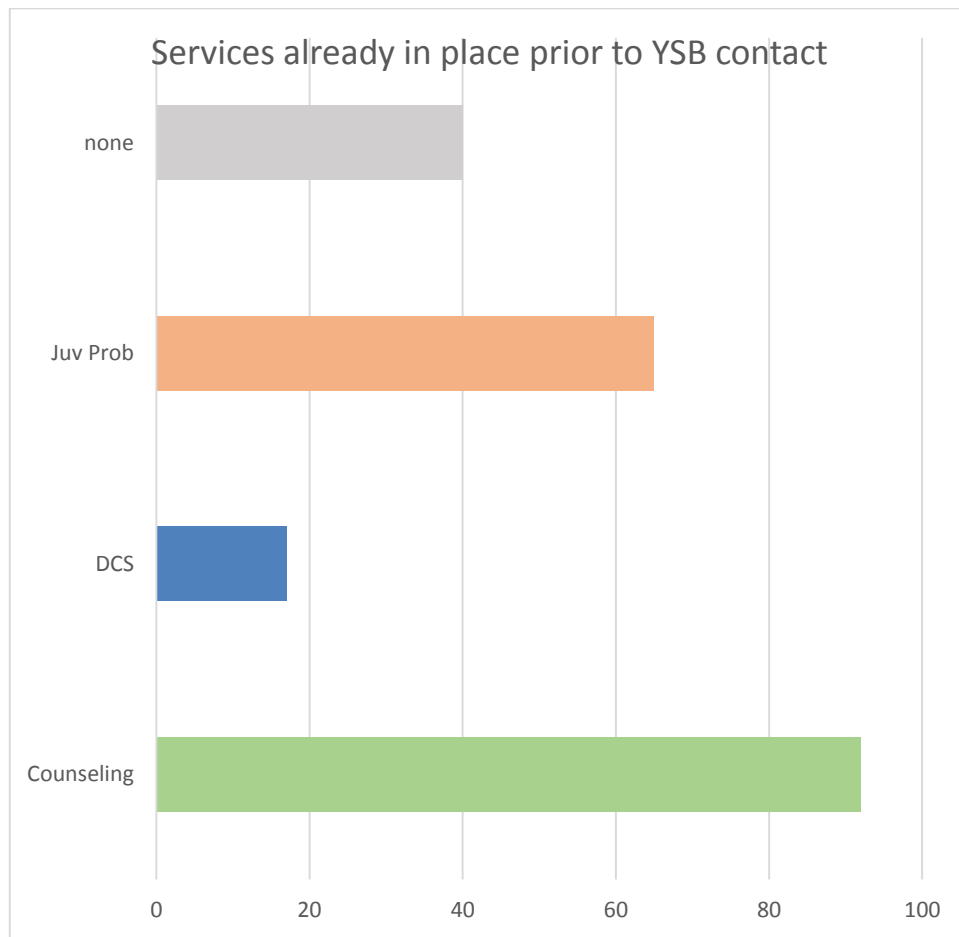


Some families did not have contact with a counselor, as the placement was less than 24 hours in duration.



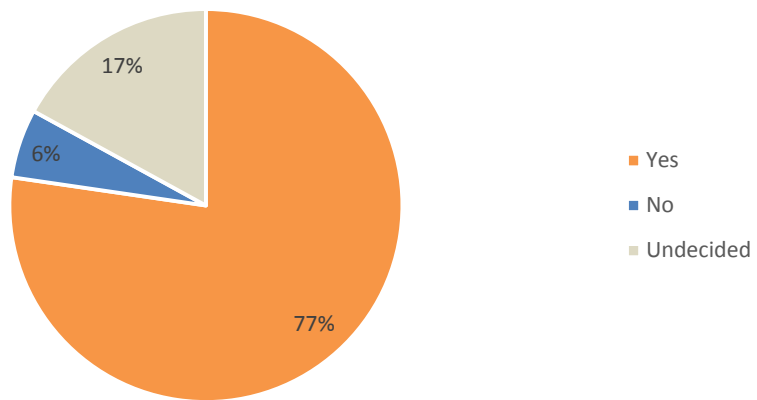
When a youth stays less than 24 hours, contact by a clinician *may* not occur. All youth staying longer than 24 hours meet with a counselor, per regulation.

All youth and family are given counsel by the direct care staff, as needed.

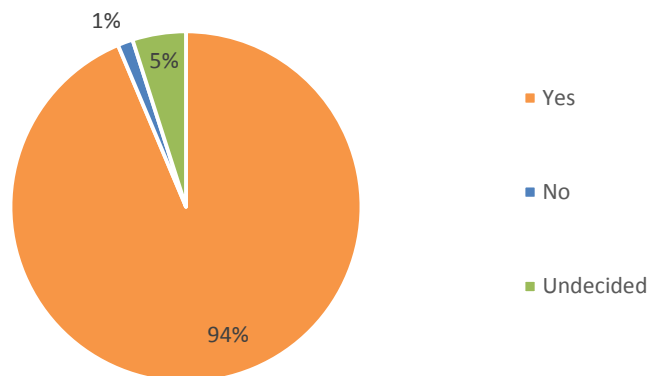


YSB works to ensure youth have aftercare or link to best fit services prior to exiting our shelter program.

Were counseling services beneficial to you/your family?



Would you recommend services to someone else?



2013 Community Partners / Shared Programming Resources

Thank you for supporting AND connecting youth our community

AmeriCorps via Indiana University	Indiana University Greenhouse
Asset Building Coalition	Indiana University Mathers Museum
Autobahn Society	Ivy Tech. Community College
Bloomingfoods	Indiana Youth Services Association
Bloomington Arts for All	Meadows Behavioral Health Hospital
Bloomington Police Department	Middleway House
Bloomington Transit	Monroe County Parks & Recreation
Bloomington Volunteer Network	Monroe County Public Library
Brandon Burlsworth Foundation	Monroe County Recycle Center
Cardinal Stage Company	Monroe County Sheriff's Department
Centerstone	Monroe County Wrap Around
Circles Initiative – Monroe County	Monroe County YMCA
Community Gardens	Monroe County Youth Council
Community Justice & Mediation Center	Mother Hubbard's Cupboard
Community Orchard Project	Planned Parenthood
Discardia	Purdue Cooperative Extension - Monroe County
Exotic Feline Rescue Center	Richland Bean Blossom Schools
Family Solutions	Rural Transit
Hoosier Hills Food bank	South Central Community Action (S.C.C.A.P.)
Hoosier Times	Stepping Stones, Inc.
Indiana Association of Residential Child Care Agencies	The Academy High School (formally New Tech)
Iota Phi Theta Fraternity Inc.	The Franklin Initiative
Indiana University School of Public Health	United Way of Monroe County
Indiana University Master's Level Education Program	WBWB Bloomington (B97) Radio Station
Indiana University School of Social Work	WFHB Radio Station
Indiana Housing & Community Development	WonderLab
Indiana University Art Museum	WTIU Radio Station

Supporting Data Page

2013 Shelter Data/Demographics/Statistics

Placement Type

	Frequency	Percent
Safe Place	23	9.5
Parental	163	67.6
Probation	43	17.8
DCS	7	2.9
Police	5	2.1
Total	241	100.0

Referral - Learned of Program

	Frequency	Percent
Safe Place	17	7.1
Outside Therapist	11	4.6
Acute Hospital	8	3.3
other youth	2	.8
Juvenile Probation	47	19.5
211 or agency info	7	2.9
previous stay	95	39.4
YSB Staff	1	.4
Police/Sheriff/Law Enforcement	22	9.1
DCS	6	2.5
School	11	4.6
Other adult/friend	14	5.8
Total	241	100.0

Age of Resident at Intake

	Frequency	Percent
9	1	.4
10	1	.4
11	10	4.1
12	19	7.9
13	28	11.6
14	44	18.3
15	56	23.2
16	41	17.0
17	41	17.0
Total	241	100.0

Gender

	Frequency	Percent
Male	136	56.4
Female	103	42.7
Transgendered	2	.8
Total	241	100.0

Age of Resident * Gender Cross-tabulation

Count

		Gender			Total
		Male	Female	Transgendered	
Age of Resident	9	1	0	0	1
	10	1	0	0	1
	11	5	5	0	10
	12	6	13	0	19
	13	18	10	0	28
	14	22	20	2	44
	15	32	24	0	56
	16	25	16	0	41
	17	26	15	0	41
Total		136	103	2	241

Race of Resident

	Frequency	Percent
Caucasian	207	85.9
African American	17	7.1
Valid Hispanic	5	2.1
Bi-Racial	12	5.0
Total	241	100.0

Has this youth been served at Binkley House Before (returning client)?

	Frequency	Percent
No	95	39.4
Valid Yes	146	60.6
Total	241	100.0

Youth Self-Report:**Do you know about Project Safe Place**

	Frequency	Percent
Knowledge	197	81.7
Valid No Knowledge	44	18.3
Total	241	100.0

All youth are educated on Project Safe Place, as a result of this question being asked at intake.

County of Residence at the Time of Intake

	Frequency	Percent
Monroe County	203	84.2
Greene County	16	6.6
Lawrence County	6	2.5
Valid Owen County	5	2.1
Morgan County	8	3.3
Other Indiana County	3	1.2
Total	241	100.0

**Family Income Level – Self Report, no documentation
required**

	Frequency	Percent
Low	112	46.5
Low Middle	37	15.4
Middle	37	15.4
Middle High	13	5.4
Valid High	8	3.3
Unknown/not reported	33	13.7
Non Applicable/Non Parental Placement	1	.4
Total	241	100.0

per Federal Guidelines

Run away * homeless Cross-tabulation

Count

		homeless		Total
		not homeless	homeless	
Run away	not recent runaway	155	17	172
	Recent runaway	58	11	69
Total		213	28	241

Is the Youth Transitioning between Housing?

	Frequency	Percent
yes - from other to home	14	5.8
yes - from home to other	17	7.1
Valid no	209	86.7
unknown	1	.4
Total	241	100.0

Insurance

	Frequency	Percent
No insurance	23	9.5
Medicaid - Primary	152	63.1
Commercial, Primary -	7	2.9
Valid Medicaid, Secondary		
One Commercial	46	19.1
Unknown	13	5.4
Total	241	100.0

Family Makeup

	Frequency	Percent
Bio-Nuclear Family	22	9.1
Single Mother	71	29.5
Single Mother with live in partner	27	11.2
Step Family (with bio mother)	28	11.6
Single Father	14	5.8
Single father with live in partner	7	2.9
Step Family (w/ Bio father)	13	5.4
Valid Grandparent(s)	20	8.3
Adopted Family	13	5.4
Foster Family	5	2.1
Ward of the Court (in placement)	5	2.1
no foster fam.		
Other Family Type	11	4.6
Unknown	5	2.1
Total	241	100.0

physical abuse
(youth self-report)

	Frequency	Percent
current	31	12.9
past	63	26.1
Valid none	137	56.8
no report/not known	10	4.1
Total	241	100.0

sexual abuse
(youth self-report)

	Frequency	Percent
current	9	3.7
past	47	19.5
Valid none	175	72.6
not reported/unknown	10	4.1
Total	241	100.0

Neglect
(youth self-report)

	Frequency	Percent
current	13	5.4
past	26	10.8
Valid none	193	80.1
not reported/unknown	9	3.7
Total	241	100.0

physical abuse * sexual abuse * neglect Cross-tabulation

Count

neglect			sexual abuse				Total
			current	past	none	not reported unknown	
current	physical abuse	current			2	0	2
		past			3	0	3
		none			6	0	6
		no report/not known			0	2	2
		Total			11	2	13
past	physical abuse	current		0	4	0	4
		past		0	4	1	5
		none		1	15	0	16
		no report/not known		0	1	0	1
		Total		1	24	1	26
none	physical abuse	current	1	4	17	0	22
		past	2	14	38	1	55
		none	4	27	83	1	115
		no report/not known	0	0	0	1	1
		Total	7	45	138	3	193
not reported/unknown	physical abuse	current	2	0	0	1	3
		no report/not known	0	1	2	3	6
		Total	2	1	2	4	9
Total	physical abuse	current	3	4	23	1	31
		past	2	14	45	2	63
		none	4	28	104	1	137
		no report/not known	0	1	3	6	10
		Total	9	47	175	10	241

**CPS report made by YSB staff
(youth shared info about abuse/neglect)**

	Frequency	Percent
YSB made CPS report during stay	77	32.0
Valid No report necessary	164	68.0
Total	241	100.0

Has youth engaged in self-harm behavior?

	Frequency	Percent
current	16	6.6
past	40	16.6
Valid none	180	74.7
not reported/not known	5	2.1
Total	241	100.0

School status

	Frequency	Percent
enrolled & attending	174	72.2
GED or alternative schooling	4	1.7
enrolled but truant often	29	12.0
suspended	11	4.6
expelled	12	5.0
Valid Home-schooled	5	2.1
dropped out - no other education	2	.8
unknown	2	.8
Graduated HS	2	.8
Total	241	100.0

Parent or Household Incarceration (past or present)

	Frequency	Percent
Valid youth denies either bio. Parent Incarcerated	83	34.4
bio. Father Incarcerated	62	25.7
bio. Mother Incarcerated	20	8.3
Both bio. Parents Incarcerated	40	16.6
Sibling or Other Household Member	6	2.5
Not Known by youth	12	5.0
Not Reported	18	7.5
Total	241	100.0

Family Substance Abuse

	Frequency	Percent
Valid youth denies either bio. Parent Substance Abuse	107	44.4
bio Father Substance Abuse	37	15.4
bio Mother Substance Abuse	19	7.9
Both bio Parents Substance Abuse	34	14.1
Other Household Member Abuses Substances	9	3.7
Not Known by youth	15	6.2
Not Reported	20	8.3
Total	241	100.0

A clinical assessment reviews if substance abuse is past or present. Remission (sustained or not) is noted.

Youth Services Bureau does not prescribe or distribute medications
(General prescriptions or supply the medication) to youth.

Binkley House does administer, per regulations, the medications that youth are prescribed by a doctor and presented to staff during their stay at the shelter. All medication administration is complied with strictly based on the written prescription provided by the doctor, as written on the medication label, unless a doctor's note states otherwise. The below statistics were gathered regarding the types of mental/behavior health medications youth were prescribed and taking while in our care. (All medications are under lock & key and control of the shift's Residential Coordinator for safety and security. Medication counts are conducted nightly to ensure accuracy.)

Antidepressant

	Frequency	Percent
Valid none	201	83.4
Valid yes	40	16.6
Total	241	100.0

Antipsychotic

	Frequency	Percent
Valid None	205	85.1
Valid yes	36	14.9
Total	241	100.0

ADHD med

	Frequency	Percent
Valid none	198	82.2
Valid yes	43	17.8
Total	241	100.0

mood stabilizer

	Frequency	Percent
Valid none	230	95.4
Valid yes	11	4.6
Total	241	100.0

antianxiety

	Frequency	Percent
Valid none	239	99.2
Valid yes	2	.8
Total	241	100.0

other RX			
		Frequency	Percent
Valid	none	179	74.3
	yes	62	25.7
	Total	241	100.0

Antidepressant * Antipsychotic * ADHD med * mood stabilizer Cross-tabulation

Count

mood stabilizer ADHD med				Antipsychotic		Total
				None	yes	
none	none	Antidepressant	none	157	14	171
			yes	15	4	19
		Total		172	18	190
	yes	Antidepressant	none	17	6	23
			yes	10	7	17
		Total		27	13	40
	Total	Antidepressant	none	174	20	194
			yes	25	11	36
		Total		199	31	230
	none	Antidepressant	none	1	3	4
			yes	4	0	4
		Total		5	3	8
yes	yes	Antidepressant	none	1	2	3
				1	2	3
		Total		2	5	7
	Total	Antidepressant	none	2	5	7
			yes	4	0	4
		Total		6	5	11
	none	Antidepressant	none	158	17	175
			yes	19	4	23
		Total		177	21	198
	yes	Antidepressant	none	18	8	26
			yes	10	7	17
		Total		28	15	43
Total	Total	Antidepressant	none	176	25	201
			yes	29	11	40
		Total		205	36	241

**Youth self-report of illegal drug use
(non-Rx Dr. prescribed)**

	Frequency	Percent
current	65	27.0
past	35	14.5
experimentation only	28	11.6
Valid none	109	45.2
not reported/unknown	4	1.7
Total	241	100.0

kid alcohol use

	Frequency	Percent
current	34	14.1
past	41	17.0
experimentation only	24	10.0
Valid none	133	55.2
not reported/not known	9	3.7
Total	241	100.0

Aftercare upon Exit from Shelter Program

	Frequency	Percent
Not reported	2	.8
Aftercare offered w/ YSB	41	17.0
Aftercare referral to outside agency	31	12.9
Valid Aftercare already in place	153	63.5
Aftercare not planned	9	3.7
n/a less than 24 hr. stay	5	2.1
Total	241	100.0

There are occasions when a youth may exit the program before a referral or plan can be put in to place by the Clinician.

Where youth went to after leaving the Shelter Program

		Frequency	Percent
Valid	Discharged to Legal Guardian	189	78.4
	Discharged to DCS caseworker	9	3.7
	Discharged to Detention/DOC	3	1.2
	Discharged to Other Family Member	9	3.7
	Discharged to Inpatient Hospitalization	3	1.2
	Discharged to Residential Setting	5	2.1
	Change Placement Type - shelter care continued	23	9.5
	Total	241	100.0

1 youth was in our care at the end of the 2013 year. Their care carried over into the 2014 year.

*changed placement type – there are occasions when the type of placement changes. Youth does not have to physically leave our care and return for their placement type to be changed. For example, a youth can come as a Safe Place placement for up to 72 hours. After that point, if services are to continue and the parent or agency agrees, the placement type changes.