



**Office of the Monroe County Surveyor**  
**Trohn Enright-Randolph**

Health Services Building  
119 West 7<sup>th</sup> Street  
Bloomington, IN 47404  
Phone: (812) 349-2570  
[surveyorsoffice@co.monroe.in.us](mailto:surveyorsoffice@co.monroe.in.us)

**AGENDA**  
**SURVEYOR REVIEW BOARD**  
**REGULAR MEETING**  
**Via Zoom App**  
**TUESDAY, JANUARY 26, 2021**

- I. Call to Order**
- II. Approval of agenda**
- III. New Business:**
  - 1. Approval of meeting minutes from November 2020**
  - 2. Office updates:**
    - a. Board Appointments for 2021**
    - b. Scrivener's errors (Perry W05 and Washington Q01)**
    - c. Developing a process for adding notes on official tiesheets**
    - d. Seeking candidates for Professional Surveyor position**
- IV. Certification of corners: BeBl\_E11, E13, E19, G09, G23, U21, I25 and Rich\_I01**
- V. Public input**
- VI. Adoption of next meeting date**
- VII. Adjournment**

**Zoom Meeting Information**

<https://monroecounty-in.zoom.us/j/83719713607?pwd=aS9rbldFY2RCRUZlQjlhenVpb09qUT09>

Meeting ID: 837 1971 3607

Password: 465055

**The meeting is open to the public. Dates are subject to change.**

For additional information, please call the Office of the Monroe County Surveyor at (812) 349-2570.

Anyone who requires an auxiliary aid or service for effective communication, or a modification of policies or procedures to participate in a program, service, or activity of Monroe County, should contact Monroe County Title VI Coordinator, (812) 349-2553, as soon as possible but no later than forty-eight (48) hours before the scheduled event.

Individuals requiring special language services should, if possible, Government Title VI Coordinator at least seventy-two (72) hours prior to the date on which the services will be needed.

N:\Meetings\_Boards\_Committees\_&\_Commissions\Monroe\_County\_Surveyor\_Review\_Board\SRB2021\Packets\20210126\_Packet\Individual Files\MCSRB\_Agenda\_20210126.docx

**Survey Utility**



Page 1 of 1





**PENDING**

## MONUMENT RECORD

Corner ID: **BeBI\_E11**

## Quarter Corner

Sections 17 & 18- T10N-R02W, 2nd P.M.  
Bean Blossom Township, Monroe County, Indiana

Section 18 T10N-R02W Section 17 T10N-R02W

**PHOTO IDENTIFIED:** *Photo Date:* 12/4/2020



*Photo Orientation & Description: BeBl\_E11 from above*



Photo Orientation & Description: Looking south at BeBl\_E11



**Photo Orientation & Description:** Looking north at BeBl\_E11



*Photo Orientation & Description:* Looking east at BeBl\_E11



*Photo Orientation & Description:* Looking west at BeBl\_E11



OFFICE OF THE MONROE COUNTY SURVEYOR • Trohn Enright-Randolph

119 W 7th Street, Bloomington, IN 47404 • 812-349-2570 • [surveyorsoffice@co.monroe.in.us](mailto:surveyorsoffice@co.monroe.in.us)

Page 2 of 3





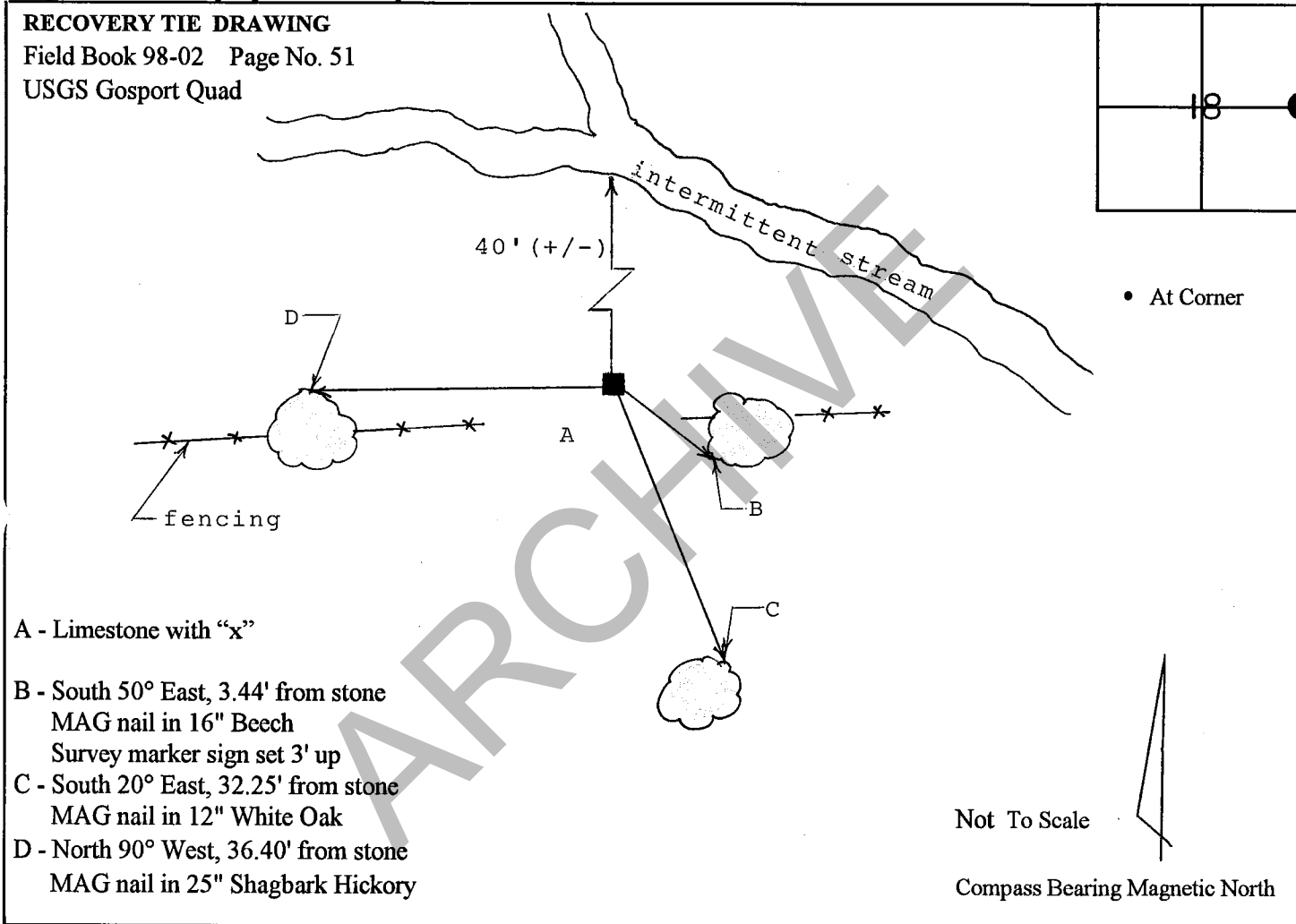


**MONUMENT RECORD**  
**State of Indiana - County of Monroe**

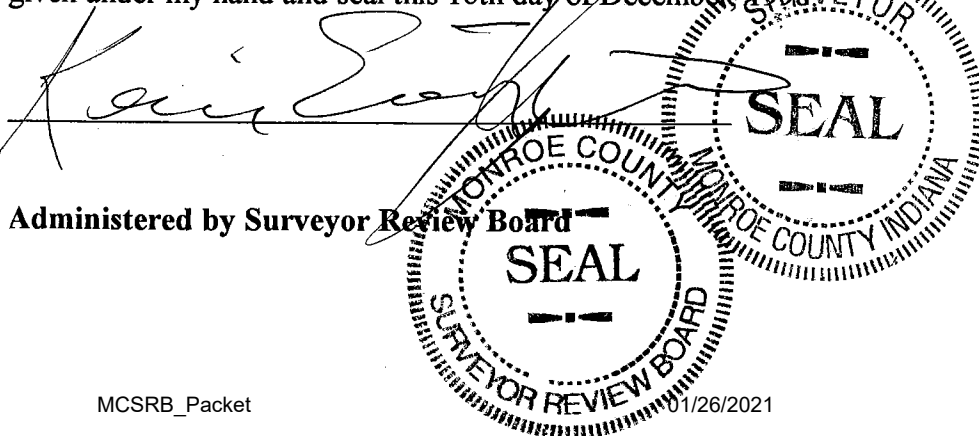
**Section: 18****Township: 10 North****Range: 2 West****Corner ID: Be Bl E-11**

**Monument Description & Remarks:** Found Limestone with "x" at East ¼ corner of section. Stone measured 0.75' (h) x 0.51' (l) x 0.50' (w).

**References on file in the County Surveyor's Office:** Survey by Douglas Curry, R.L.S. No. 890006, dated August 12, 1993, prepared for Orpha Marker.



I, Kevin P. Enright, Monroe County Surveyor, hereby certify that this document was prepared under my direction in accordance with the provisions of Section 36-2-12-11 of the Indiana Code; and the above data is given under my hand and seal this 16th day of December, 1998.

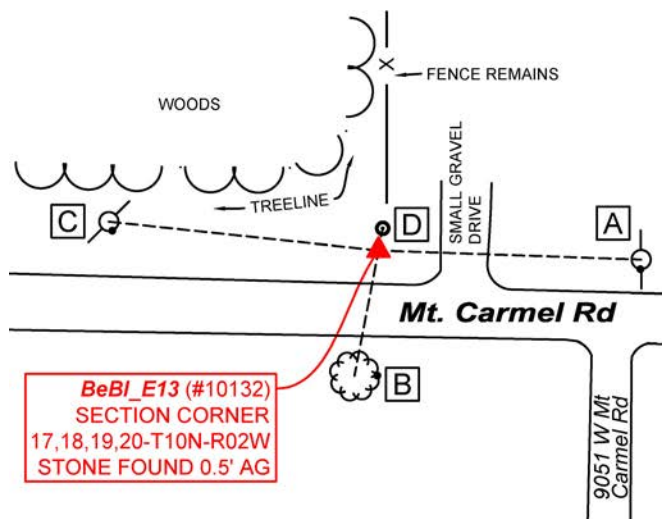


**PENDING****MONUMENT RECORD**Corner ID: **BeBI\_E13****Section Corner**

Sections 17, 18, 19 & 20- T10N-R02W, 2nd P.M.  
 Bean Blossom Township, Monroe County, Indiana

Section 18 T10N-R02W	Section 17 T10N-R02W
Section 19 T10N-R02W	Section 20 T10N-R02W

**MONUMENT:** Describe monument set or found (Include material type, scribing, distance above/below grade, dimensions.)  
 0.5" x 0.5" limestone with 'X' carved in the top and a small chip in the northeast corner found 0.7' above grade.

**MONUMENT LOCATION SKETCH:****WITNESS MONUMENT TIES**

All ties to new Bearing Trees (BTs) are a mag nail set in a 1-1/2" plastic washer stamped "SURVEY MARKER - DO NOT REMOVE" and hack mark at the root crown (less than 12" above ground) perpendicular to the center of the tree, unless otherwise noted. BT diameters are noted as dbh and are measured approximately 4.5' above ground. Bearings are measured from the monument to the center of the BT, distances are measured from the monument to the mag nail. Distances to witness ties were measured with a Leica Disto laser distance meter. Bearings were collected with the internal magnetic compass of the Javad Triumph LS and were automatically adjusted to grid north.

ID	BEARING	DISTANCE	DESCRIPTION
Witness A	S 88d E	82.0'	PK nail found 2.7' above grade on the south side of a 7" power pole per 2004 MCSO tie sheet
Witness B	S 11d W	39.7'	Mag nail and washer set in hack 0.95' above grade on the east side of a 6" maple
Witness C	N 84d W	84.7'	PK nail found 1.3' above grade on the south side of an 8" power pole per 2004 MCSO tie sheet
Witness D	N 11d E	7.0'	0.9" x 0.4" limestone wrapped in fencing 0.5' above grade per 2004 MCSO tie sheet



**OFFICE OF THE MONROE COUNTY SURVEYOR • Trohn Enright-Randolph**

119 W 7th Street, Bloomington, IN 47404 • 812-349-2570 • surveyoroffice@co.monroe.in.us

Page 1 of 3



**PENDING****MONUMENT RECORD**Corner ID: **BeBI\_E13****Section Corner**

Sections 17, 18, 19 & 20- T10N-R02W, 2nd P.M.  
 Bean Blossom Township, Monroe County, Indiana

Section 18 T10N-R02W	Section 17 T10N-R02W
Section 19 T10N-R02W	Section 20 T10N-R02W

**PHOTO IDENTIFIED:** *Photo Date: 12/4/2020**Photo Orientation & Description: BeBI\_E13 from above**Photo Orientation & Description: Looking north at BeBI\_E13**Photo Orientation & Description: Looking west at BeBI\_E13**Photo Orientation & Description: Looking east at BeBI\_E13***ORIGINAL OR SUBSEQUENT SURVEY EVIDENCE FOUND:** *Include, search area or areas, search procedure, etc.*

*Date of Field work/Search:* 12/02/2020 *By:* CAR & TER *Monument Found:* Stone *BTs or Reference Objects Found:* All witnesses per 2004 MSCO tie sheet were found *Project #:* BeBI Stones *Field Book:* 54/16 *Equipment:* The basis of bearings is Grid North System NAD83(2011)/Indiana West NAVD 88, Epoch 2010.0000, geoid12b\_conus.db3, US Survey Feet, derived from GPS observations utilizing the Indiana Real-Time Network (INCORS). Coordinate data was collected with a Javad Triumph LS Network Rover. Coordinates are available upon request. Distances to witness ties were collected with a Leica Disto laser distance meter. Bearings to witness ties were collected with the internal magnetic compass of the Javad Triumph LS and were automatically adjusted to grid north and are approximately shown hereon for reference. Priority should be given to provided distances over bearings. *Notes:* Witnesses A & C distances were measured by pulling tape due to the Leica Disto not being able to read those distances. All witness photos are on file in the Monroe County Surveyor's Office.

**OTHER EVIDENCE:** *Describe corner location relative to nearby features and how to reach the corner location – note fences, roads, timber cutting lines, mow lines, clearings, plantings, streams, topo changes, etc.*

The stone is located at the top of a small slope on the north side of W Mt. Carmel Rd. There is a small gravel drive to the east of the stone and also woven wire fence remains to the north. It is west of the yard at 9050 W Mt Carmel Road. A Tpost is set 2.6' north of the stone with a "Protect Nearby Survey Marker" sign attached 3.0' above grade facing south.

**OFFICE OF THE MONROE COUNTY SURVEYOR • Trohn Enright-Randolph**

119 W 7th Street, Bloomington, IN 47404 • 812-349-2570 • surveyoroffice@co.monroe.in.us

Page 2 of 3

**MONUMENT RECORD**Corner ID: **BeBI\_E13****Section Corner**

Sections 17, 18, 19 & 20- T10N-R02W, 2nd P.M.  
 Bean Blossom Township, Monroe County, Indiana

Section 18 T10N-R02W	Section 17 T10N-R02W
Section 19 T10N-R02W	Section 20 T10N-R02W

**MONUMENT PRESERVATION:** *Describe work done to preserve existing monument.*

New coordinates were collected, took a new witness, spray painted the stone orange, flagged all witnesses and set a Tpost with a "Protect Nearby Survey Marker" sign.

**THEORY OF LOCATION:** *Describe the theory of location for acceptance of this monument. Include monument origin and associated uncertainty.*

A Limestone 0.5'x0.5'x0.6' out of the ground with "X" was previously witnessed and Monument Record prepared under the direction of the Monroe County Surveyor, Edmund O. Farkas, on April 04, 1985. The 1985 Monument Record accepted the Limestone 0.5'x0.5'x0.6' out of the ground with "X". The Limestone 0.5'x0.5'x0.6' out of the ground with "X" was witnessed and Monument Record prepared by Indiana Register Land Surveyor No. S0559, Ben Bledsoe, on December, 2004, under the direction of the Monroe County Surveyor, Steven V. Farkas. The 2004 Monument Record accepted the Limestone 0.5'x0.5'x0.6' out of the ground with "X".

**CERTIFICATION:**

DRAFT

**OFFICE OF THE MONROE COUNTY SURVEYOR • Trohn Enright-Randolph**

119 W 7th Street, Bloomington, IN 47404 • 812-349-2570 • surveyoroffice@co.monroe.in.us

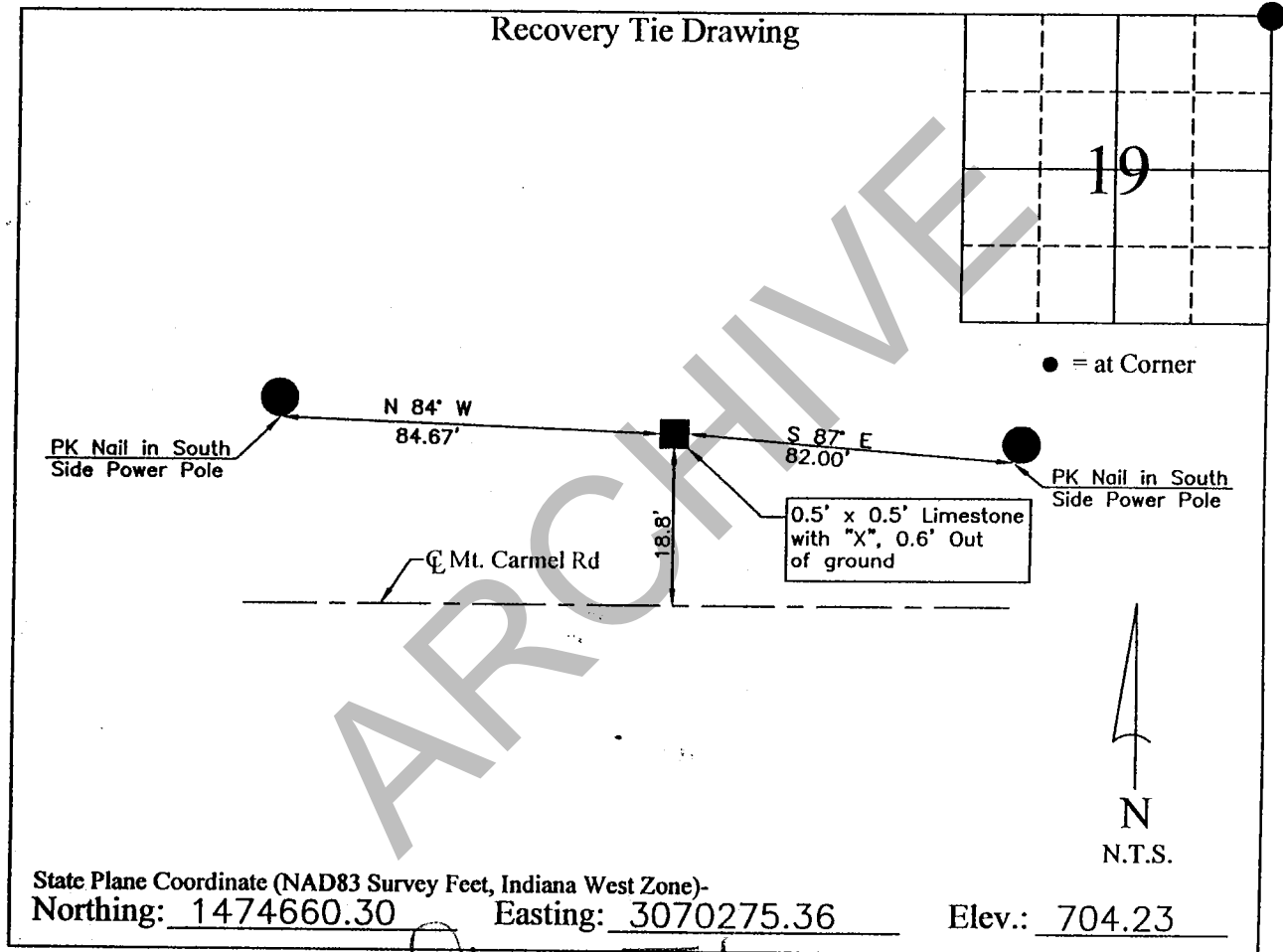
Page 3 of 3



Corner I.D. # E-13

MONUMENT RECORD

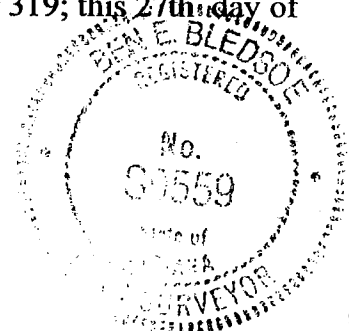
STATE OF INDIANA ~ COUNTY OF MONROE

Section 19, Township 10 North, Range 2 West,Monument Description & Remarks: Limestone 0.5' x 0.5', 0.6' Out of ground with "X"COMPLETED By Stu U. Farkes

I, Ben E. Bledsoe, Registered Land Surveyor, here by certify that this document was prepared under my direction in accordance with the provisions of Section 17-3-64-4 through 17-3-64-8 of the Indiana Code, being Acts of 1965, Chapter 319; this 27th day of December, 2004 A.D.

*Ben E. Bledsoe*

Indiana Registered Land Surveyor No. S0559



## STATE OF INDIANA - COUNTY OF MONROE

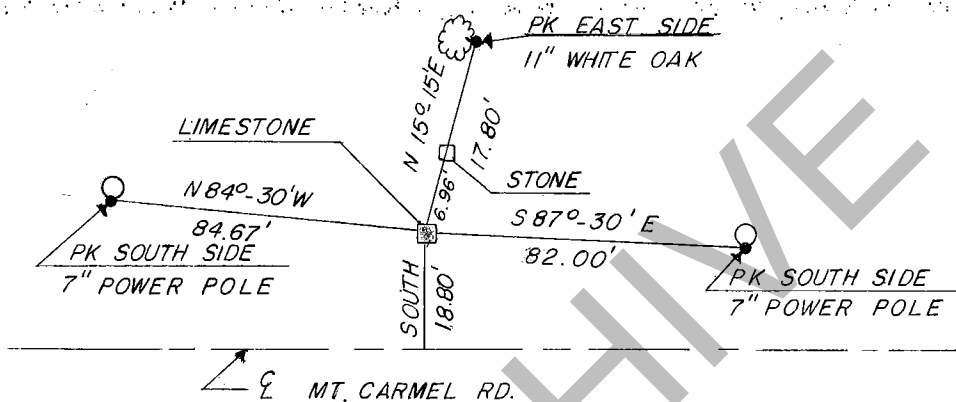
SECTION 19, TOWNSHIP 10 N, RANGE 2 W

## MONUMENT DESCRIPTION &amp; REMARKS

FOUND LIMESTONE SOLID IN GROUND WITH "X".

LIMESTONE= 0.5' x 0.5' x 0.6' OUT OF GROUND

## RECOVERY TIE DRAWING



(●) AT CORNER



NOT TO SCALE

STATE OF INDIANA

COUNTY OF MONROE

I, EDMUND O. FARKAS HEREBY CERTIFY THAT THIS DOCUMENT WAS PREPARED UNDER MY DIRECTION IN ACCORDANCE WITH THE PROVISIONS OF SECTION 17-3-64-4 - 17-3-64-8 OF THE INDIANA CODE, BEING ACTS OF 1965, CHAPTER 319; AND THE ABOVE DATA IS GIVEN UNDER MY HAND AND SEAL THIS 4 TH DAY OF APRIL, 1985 A.D.

SPACE  
RESERVED  
FOR  
RECORDING  
OFFICER.

INDIANA REGISTERED LAND SURVEYOR NO. \_\_\_\_\_

OR \_\_\_\_\_

UNITED STATES GOVERNMENT AGENCY

TOWNSHIP:

BEAN BLOSSOM

CORNER I.D.

TITLE

E-13



**PENDING**

## MONUMENT RECORD

Corner ID: **BeBI\_E19**

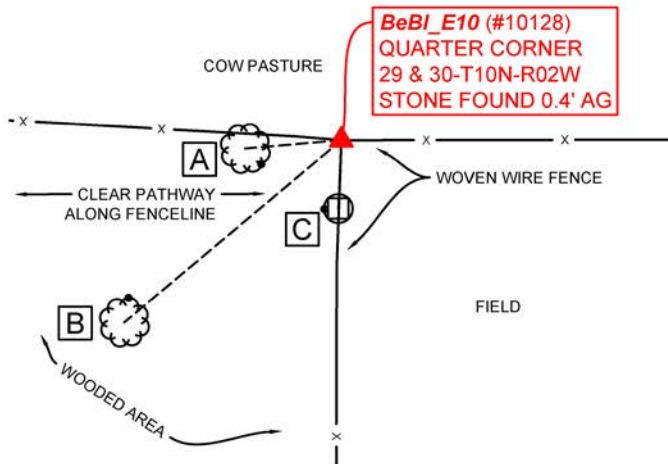
## Quarter Corner

Sections 29 & 30- T10N-R02W, 2nd P.M.  
Bean Blossom Township, Monroe County, Indiana

Section 30 T10N-R02W      Section 29 T10N-R02W

**MONUMENT:** *Describe monument set or found (Include material type, scribing, distance above/below grade, dimensions.)*  
Found 0.7" x 1.1' sandstone with a big chiseled '+' on the top, 0.4' above grade planted firmly in the ground.

**MONUMENT LOCATION SKETCH:**



## WITNESS MONUMENT TIES

*All ties to new Bearing Trees (BTs) are a mag nail set in a 1-1/2" plastic washer stamped "SURVEY MARKER - DO NOT REMOVE" and hack mark at the root crown (less than 12" above ground) perpendicular to the center of the tree, unless otherwise noted. BT diameters are noted as dbh and are measured approximately 4.5' above ground. Bearings are measured from the monument to the center of the BT, distances are measured from the monument to the mag nail.*

<i>ID</i>	<i>BEARING</i>	<i>DISTANCE</i>	<i>DESCRIPTION</i>
Witness A	S 85d W	20.1'	Mag nail and washer set in hack 0.5' above grade on the southeast side of a 27" black walnut
Witness B	S 50d W	59.0'	Mag nail and washer set in hack 0.7' above grade on the north side of a 17" bifurcated red cedar
Witness C	S 3d W	14.2'	Mag nail and washer set 1.0' above grade in a 5" x 7" wooden post



OFFICE OF THE MONROE COUNTY SURVEYOR • Trohn Enright-Randolph

119 W 7th Street, Bloomington, IN 47404 • 812-349-2570 • [surveyorsoffice@co.monroe.in.us](mailto:surveyorsoffice@co.monroe.in.us)

Page 1 of 3

**PENDING**

## MONUMENT RECORD

Corner ID: **BeBI\_E19**

## Quarter Corner

Sections 29 & 30- T10N-R02W, 2nd P.M.  
Bean Blossom Township, Monroe County, Indiana

Section 30 T10N-R02W    Section 29 T10N-R02W

**PHOTO IDENTIFIED:** *Photo Date:* 10/22/2020



*Photo Orientation & Description:* BeBl\_E19 from above



*Photo Orientation & Description:* Looking north at BeBl\_E19



*Photo Orientation & Description:* Looking east at BeBI\_E19



*Photo Orientation & Description:* Looking northeast at BeBl\_E19

**ORIGINAL OR SUBSEQUENT SURVEY EVIDENCE FOUND:** *Include, search area or areas, search procedure, etc.*

*Date of Field work/Search:* 10/22/2020, 11/23/2020 *By:* CAR & TER *Monument Found:* Stone *BTs or Reference Objects Found:* All witness trees and wooden post referenced in 1999 MSCO tie sheet were found, although none of the mag nails were located. Also located was the previously set "Protect Nearby Survey Marker" sign. *Project #:* BeBl Stones *Field Book:* 54/13,14 *Equipment:* The basis of bearings is Grid North System NAD83(2011)/Indiana West NAVD 88, Epoch 2010.0000, geoid12b\_conus.db3, US Survey Feet, derived from GPS observations utilizing a Javad Triumph LS Rover and a Javad Triumph 2 Base. Static observations were post-processed using the JAVAD GNSS Data Online Processing Service (DPOS). Coordinate data was collected with a Javad Triumph LS Rover or radially with a conventional total station (Sokkia Set 510) from points established by GPS. Distances to witness ties were collected with a Leica Disto laser distance meter. Bearings to witness ties were collected with the internal magnetic compass of the Javad Triumph LS and were automatically adjusted to grid north and are approximately shown hereon for reference. Priority should be given to provide distances over bearings. *Notes:*

**OTHER EVIDENCE:** Describe corner location relative to nearby features and how to reach the corner location – note fences, roads, timber cutting lines, mow lines, clearings, plantings, streams, topo changes, etc.

The monument is located at the intersection of an east, west, and south running woven wire fenceline. There is a 6 x 7 round wooden post slightly to the east of the stone with a "Protect Nearby Survey Marker" sign found attached 4' above grade facing south. There is also another round wooden post just southeast of the stone.



OFFICE OF THE MONROE COUNTY SURVEYOR • Trohn Enright-Randolph

119 W 7th Street, Bloomington, IN 47404 • 812-349-2570 • [surveyoroffice@co.monroe.in.us](mailto:surveyoroffice@co.monroe.in.us)

Page 2 of 3



**MONUMENT RECORD**Corner ID: **BeBI\_E19****Quarter Corner**

Sections 29 & 30- T10N-R02W, 2nd P.M.  
 Bean Blossom Township, Monroe County, Indiana


**Section 30**  
 T10N-R02W

**Section 29**  
 T10N-R02W

**MONUMENT PRESERVATION:** *Describe work done to preserve existing monument.*

New witness ties were set, coordinates were collected, and the stone was spray painted orange.

**THEORY OF LOCATION:** *Describe the theory of location for acceptance of this monument. Include monument origin and associated uncertainty.*

The Limestone 0.45'x1.15'x0.8' with "+" was previously witnessed and the Monument Record prepared under the direction of the Monroe County Surveyor, Kevin Enright, on February 12, 1999 and accepted by the Monroe County Surveyor Review Board. The 1999 Monument Record accepted the Limestone 0.45'x1.15'x0.8' with "+" per Martin Subdivision Preliminary Plat by Edmund Farkas.

**CERTIFICATION:**

DRAFT



**OFFICE OF THE MONROE COUNTY SURVEYOR • Trohn Enright-Randolph**

119 W 7th Street, Bloomington, IN 47404 • 812-349-2570 • surveyoroffice@co.monroe.in.us

Page 3 of 3



**MONUMENT RECORD**  
**State of Indiana - County of Monroe**

Section: 29

Township: 10 North

Range: 2 West

Corner ID: Be Bl E-19

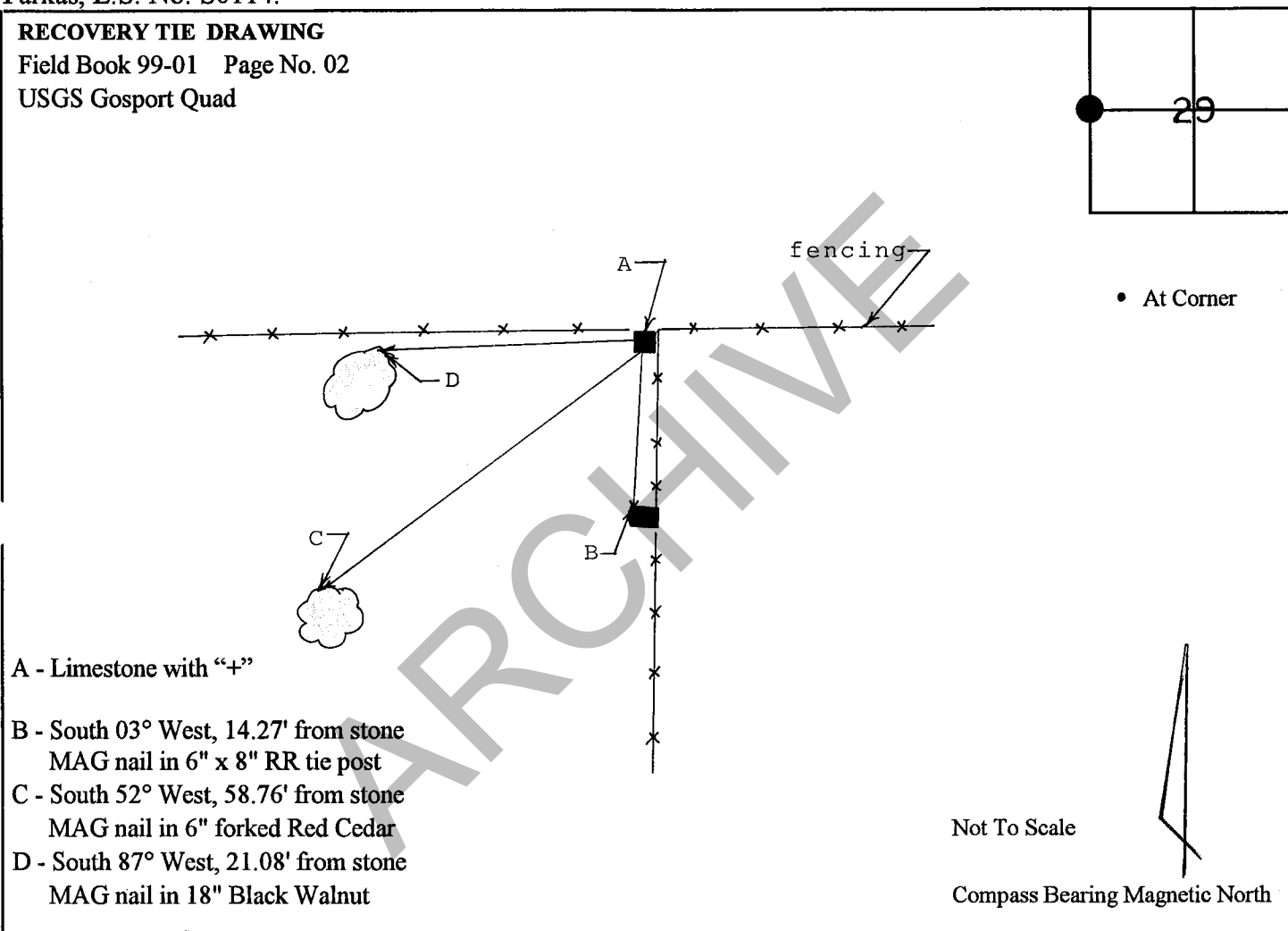
**Monument Description & Remarks:** Found Limestone with chisled "+" at West  $\frac{1}{4}$  corner of section. Stone was well marked, firm in ground, and measured 0.45' (h) x 1.15' (l) x 0.80' (w). Survey marker sign set 4' up on fence post just east of stone.

**References on file in the County Surveyor's Office:** Martin Subdivision Preliminary Plat, prepared by Edmund Farkas, L.S. No. S0114.

**RECOVERY TIE DRAWING**

Field Book 99-01 Page No. 02

USGS Gosport Quad



I, Kevin P. Enright, Monroe County Surveyor, hereby certify that this document was prepared under my direction in accordance with the provisions of Section 36-2-2-1 of the Indiana Code; and the above data is given under my hand and seal this 12th day of February, 1999.

*Kevin P. Enright*

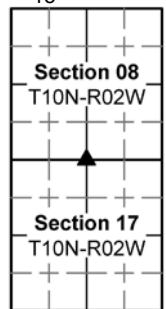
Administered by Surveyor Review Board



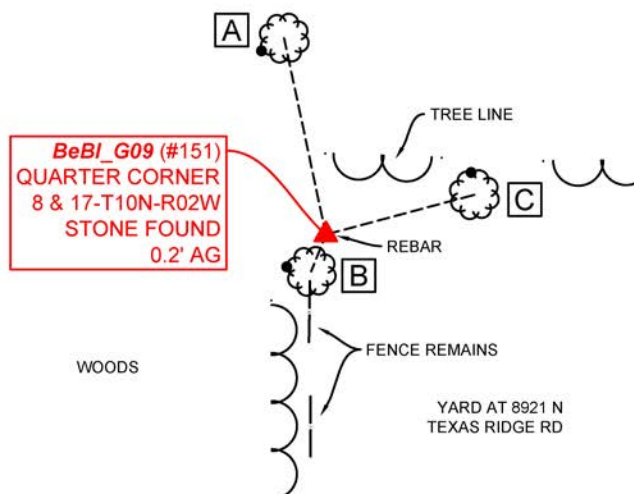
**PENDING****MONUMENT RECORD**Corner ID: **BeBI\_G09****Quarter Corner**

Sections 8 &amp; 17- T10N-R02W, 2nd P.M.

Bean Blossom Township, Monroe County, Indiana

**MONUMENT:** Describe monument set or found (Include material type, scribing, distance above/below grade, dimensions.)

0.35' X 0.4' limestone found 0.2' above grade with no visible markings. A 5/8" rebar is 0.5' west of the stone 0.5' above grade leaning south.

**MONUMENT LOCATION SKETCH:****WITNESS MONUMENT TIES**

All ties to new Bearing Trees (BTs) are a mag nail set in a 1-1/2" plastic washer stamped "SURVEY MARKER - DO NOT REMOVE" and hack mark at the root crown (less than 12" above ground) perpendicular to the center of the tree, unless otherwise noted. BT diameters are noted as dbh and are measured approximately 4.5' above ground. Bearings are measured from the monument to the center of the BT, distances are measured from the monument to the mag nail.

ID	BEARING	DISTANCE	DESCRIPTION
Witness A	N 12d W	41.8'	Mag nail and washer set in hack 0.6' above grade on the west side of a 25" white oak with an old metal "No Hunting" sign grown into the east side of the tree.
Witness B	S 22d W	8.2'	Mag nail and washer set in hack 0.9' above grade on the west side of a 31" maple with north/south woven wire fence remains
Witness C	N 75d E	32.0'	Mag nail and washer set in hack 1.0' above grade on the north side of a 7" beech tree

**OFFICE OF THE MONROE COUNTY SURVEYOR • Trohn Enright-Randolph**

119 W 7th Street, Bloomington, IN 47404 • 812-349-2570 • surveyorsoffice@co.monroe.in.us

Page 1 of 3



**PENDING****MONUMENT RECORD**Corner ID: **BeBI\_G09****Quarter Corner**

Sections 8 & 17- T10N-R02W, 2nd P.M.  
 Bean Blossom Township, Monroe County, Indiana

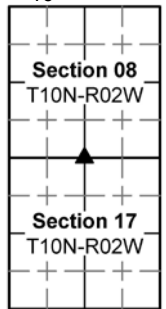
**PHOTO IDENTIFIED:** Photo Date: 01/05/2021

Photo Orientation &amp; Description: BeBI\_G09 from above



Photo Orientation &amp; Description: Looking west at BeBI\_G09



Photo Orientation &amp; Description: Looking south at BeBI\_G09



Photo Orientation &amp; Description: Looking north at BeBI\_G09

**ORIGINAL OR SUBSEQUENT SURVEY EVIDENCE FOUND:** Include, search area or areas, search procedure, etc.

Date of Field work/Search: 01/05/2021 By: CAR Monument Found: Stone BTs or Reference Objects Found: Witness trees were located, but no mag nails were found Project #: BeBI\_G09 Field Book: 54/20 Equipment: The basis of bearings is Grid North System NAD83(2011)/Indiana West NAVD 88, Epoch 2010.0000, geoid12b\_conus.db3, US Survey Feet, derived from GPS observations utilizing the Indiana Real-Time Network (INCORS). Coordinate data was collected with a Javad Triumph LS Network Rover. Coordinates are available upon request. Distances to witness ties were collected with a Leica Disto laser distance meter. Bearings to witness ties were collected with the internal magnetic compass of the Javad Triumph LS and were automatically adjusted to grid north and are approximately shown hereon for reference. Priority should be given to provided distances over bearings. Notes: All witness photos are on file in the Monroe County Surveyor's Office. Could not collect a fixed shot with Javad Rover.

**OTHER EVIDENCE:** Describe corner location relative to nearby features and how to reach the corner location – note fences, roads, timber cutting lines, mow lines, clearings, plantings, streams, topo changes, etc.

The stone is located at the northwest corner of the yard at 8921 N Texas Ridge Rd. There is a 31" maple south of the stone (referenced as Witness B) along a north/south running tree line with woven wire fence remains scattered south.

**MONUMENT PRESERVATION:** Describe work done to preserve existing monument.

Took new witnesses, attempted to collect fixed coordinates but could only collect a floating shot, set a t-post with a "Protect Nearby Survey Marker" sign facing east.

**OFFICE OF THE MONROE COUNTY SURVEYOR • Trohn Enright-Randolph**

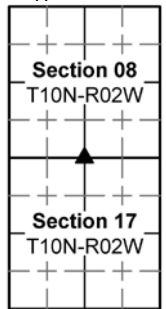
119 W 7th Street, Bloomington, IN 47404 • 812-349-2570 • surveyoroffice@co.monroe.in.us

Page 2 of 3



**MONUMENT RECORD**Corner ID: **BeBI\_G09****Quarter Corner**

Sections 8 & 17- T10N-R02W, 2nd P.M.  
 Bean Blossom Township, Monroe County, Indiana



**THEORY OF LOCATION:** *Describe the theory of location for acceptance of this monument. Include monument origin and associated uncertainty.*  
 The Limestone 0.2'x0.4'x0.3' was previously witnessed and the Monument Record prepared under the direction of the Monroe County Surveyor, Kevin Enright, on November 09, 1998 and accepted by the Monroe County Surveyor Review Board. The 1998 Monument Record accepted the Limestone 0.2'x0.4'x0.3' per a 1997 survey by Mike Mundy on file in Recorder's Office Book 04, Page 326.

**CERTIFICATION:**

DRAFT

**OFFICE OF THE MONROE COUNTY SURVEYOR • Trohn Enright-Randolph**

119 W 7th Street, Bloomington, IN 47404 • 812-349-2570 • surveyoroffice@co.monroe.in.us

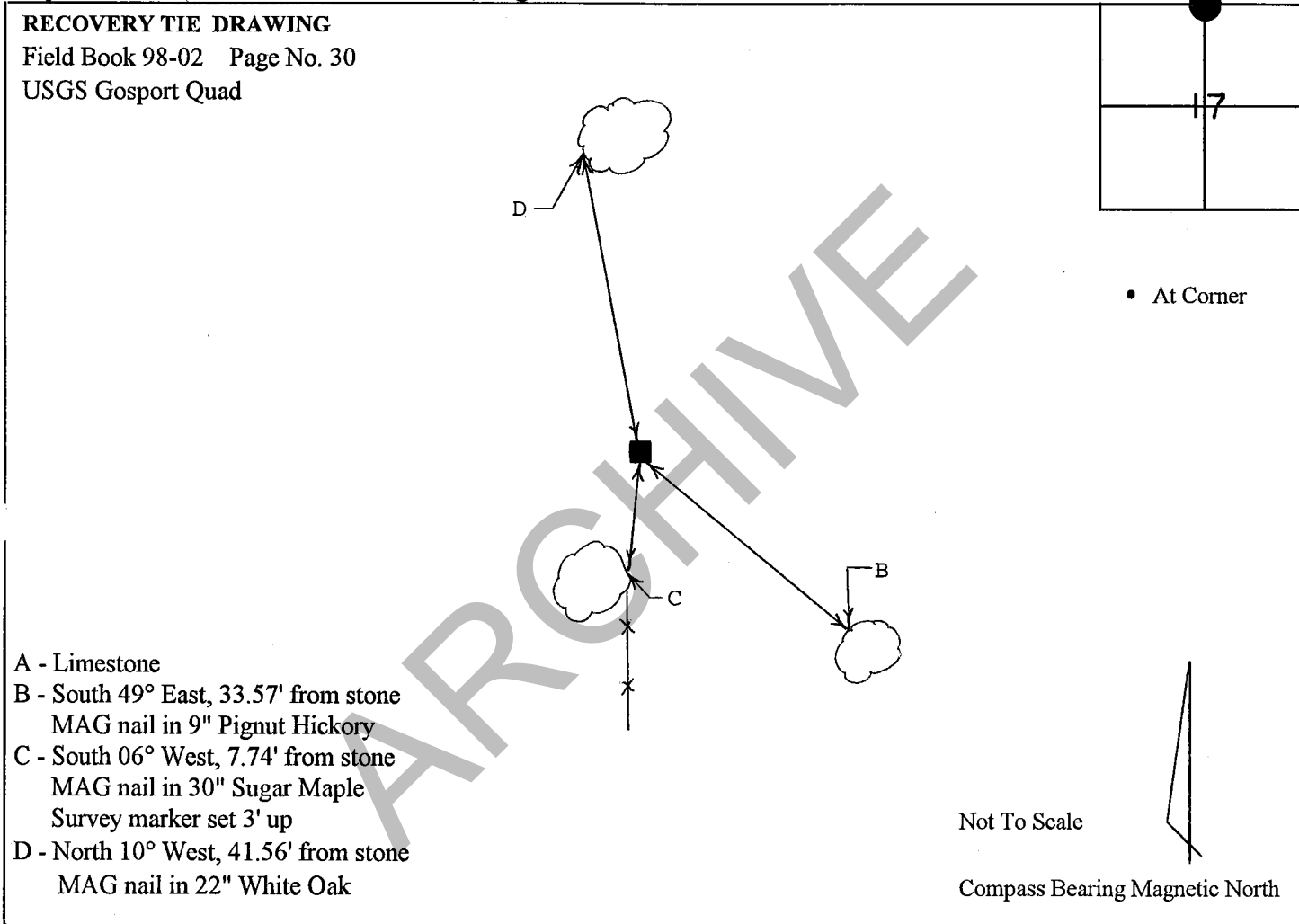
Page 3 of 3

**MONUMENT RECORD**  
**State of Indiana - County of Monroe**

**Section: 17****Township: 10 North****Range: 2 West****Corner ID: Be BI G-09**

**Monument Description & Remarks:** Found flagged and staked Limestone at North  $\frac{1}{4}$  corner of section. Stone measured 0.2' x 0.4' x 0.3' out of ground; no observed etching.

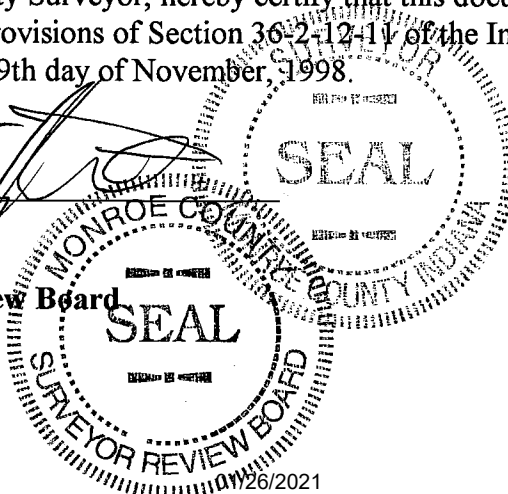
**References on file in the County Surveyor's Office:** Survey by Mike Mundy, R.L.S. No. 880014, dated August 7, 1997, and recorded in Book 4, Page 326 in the Recorder's Office.



I, Kevin P. Enright, Monroe County Surveyor, hereby certify that this document was prepared under my direction in accordance with the provisions of Section 36-2-12-11 of the Indiana Code; and the above data is given under my hand and seal this 9th day of November, 1998.

*Kevin P. Enright*

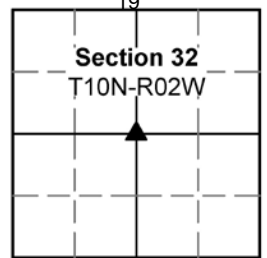
Administered by Surveyor Review Board



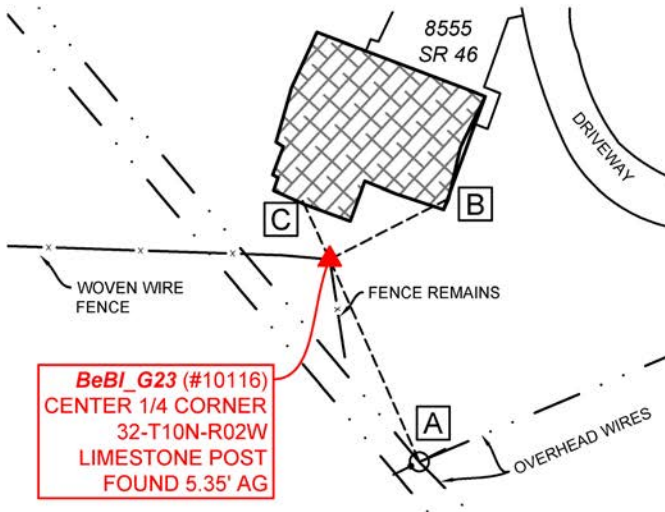
**PENDING****MONUMENT RECORD**Corner ID: **BeBI\_G23****Center Quarter Corner**

Section 32- T10N-R02W, 2nd P.M.

Bean Blossom Township, Monroe County, Indiana



**MONUMENT:** Describe monument set or found (Include material type, scribing, distance above/below grade, dimensions.)  
 An 8" x 10" limestone post found 5.35' tall/above grade

**MONUMENT LOCATION SKETCH:****WITNESS MONUMENT TIES**

ID	BEARING	DISTANCE	DESCRIPTION
Witness A	S 24d E	57.3'	Mag nail with pink flagging found 0.65' above grade on the south side of a 10" utility pole per 2010 MCSO tie sheet
Witness B	N 63d E	34.7'	The southeast corner of house foundation
Witness C	N 25d W	16.7'	The southwest corner of house foundation at stairs

**PHOTO IDENTIFIED:** Photo Date: 11/23/2020**OFFICE OF THE MONROE COUNTY SURVEYOR • Trohn Enright-Randolph**

119 W 7th Street, Bloomington, IN 47404 • 812-349-2570 • surveyorsoffice@co.monroe.in.us

Page 1 of 3



**PENDING****MONUMENT RECORD**Corner ID: **BeBl\_G23****Center Quarter Corner**

Section 32- T10N-R02W, 2nd P.M.

Bean Blossom Township, Monroe County, Indiana

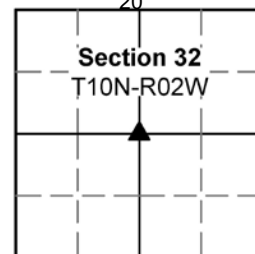


Photo Orientation &amp; Description: Looking west at BeBl\_G23



Photo Orientation &amp; Description: Looking northwest at BeBl\_G23



Photo Orientation &amp; Description: Looking south at BeBl\_G23



Photo Orientation &amp; Description: Looking east at BeBl\_G23

**ORIGINAL OR SUBSEQUENT SURVEY EVIDENCE FOUND:** *Include, search area or areas, search procedure, etc.*

*Date of Field work/Search:* 11/23/2020 *By:* CAR *Monument Found:* Limestone post *BTs or Reference Objects Found:* All mag nails found per 2010 MSCO monument record. *Project #:* BeBl\_Stones *Field Book:* 54/15 *Equipment:* The basis of bearings is Grid North System NAD83(2011)/Indiana West NAVD 88, Epoch 2010.0000, geoid12b\_conus.db3, US Survey Feet, derived from GPS observations utilizing the Indiana Real-Time Network (INCORS). Coordinate data was collected with a Javad Triumph LS Network Rover. Coordinates are available upon request. Distances to witness ties were collected with a Leica Disto laser distance meter. Bearings to witness ties were collected with the internal magnetic compass of the Javad Triumph LS and were automatically adjusted to grid north and are approximately shown hereon for reference. Priority should be given to provided distances over bearings. *Notes:* The post is not level at the top, slanting downward to the south.

**OTHER EVIDENCE:** *Describe corner location relative to nearby features and how to reach the corner location – note fences, roads, timber cutting lines, mow lines, clearings, plantings, streams, topo changes, etc.*

The post is set at a west running woven wire fenceline, with fence remains running to the south as well. It is in the backyard of 8555 SR 46. There is a "Protect Nearby Survey Marker" sign 3.6' above grade facing east and wire wrapped to the fence

**MONUMENT PRESERVATION:** *Describe work done to preserve existing monument.*

New coordinates were collected and new witnesses/bearings and distances were collected as well.

**OFFICE OF THE MONROE COUNTY SURVEYOR • Trohn Enright-Randolph**

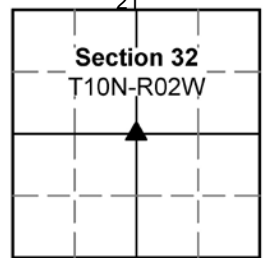
119 W 7th Street, Bloomington, IN 47404 • 812-349-2570 • surveyoroffice@co.monroe.in.us

Page 2 of 3

**MONUMENT RECORD**Corner ID: **BeBI\_G23****Center Quarter Corner**

Section 32- T10N-R02W, 2nd P.M.

Bean Blossom Township, Monroe County, Indiana



**THEORY OF LOCATION:** *Describe the theory of location for acceptance of this monument. Include monument origin and associated uncertainty.*  
 The Limestone Post 0.85'x0.67'x5.5' was previously witnessed and the Monument Record prepared under the direction of the Monroe County Surveyor, Kevin Enright, on February 19, 2010 and accepted by the Monroe County Surveyor Review Board on March 09, 2010. The 2010 Monument Record accepted the Limestone Post 0.85'x0.67'x5.5' per a 2008 Thomas Ponton survey by Eric L. Deckard on file in Surveyor Office.

**CERTIFICATION:**

DRAFT

**OFFICE OF THE MONROE COUNTY SURVEYOR • Trohn Enright-Randolph**

119 W 7th Street, Bloomington, IN 47404 • 812-349-2570 • surveyoroffice@co.monroe.in.us

Page 3 of 3

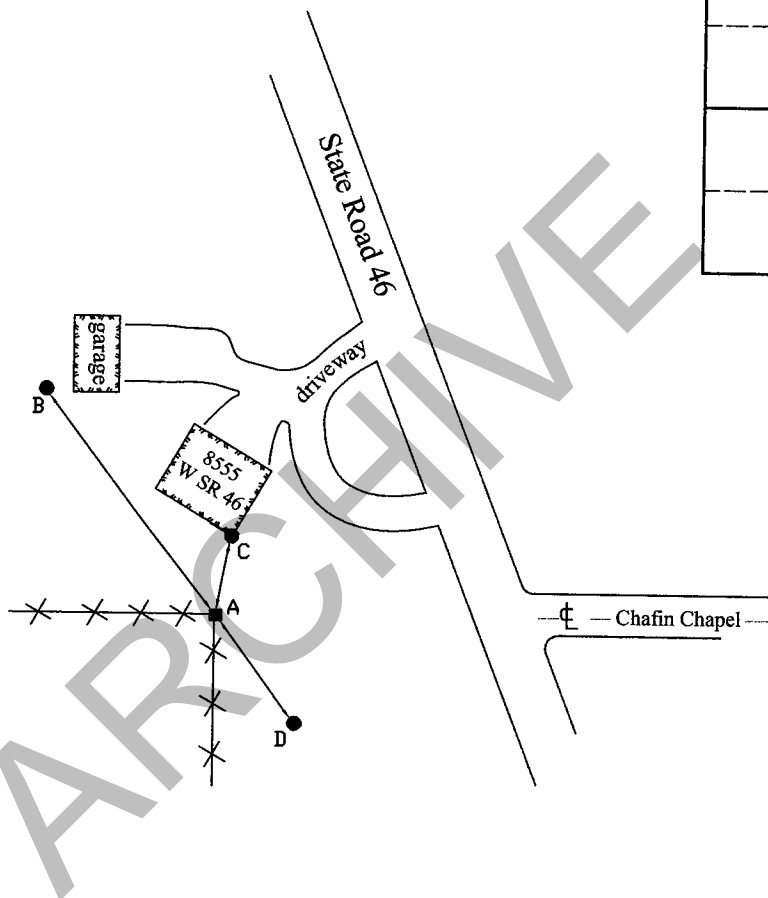
**MONUMENT RECORD**  
State of Indiana - County of Monroe

**Section:** 32**Township:** 10 North**Range:** 2 West**Corner ID:** BeBl G-23

**Monument Description & Remarks:** Limestone Post, length 0.85ft, width 0.67ft, height 5.50ft.  
Survey Sign 4.5ft above ground at pt. A

**References On File:** Eric L. Deckard survey, Thomas Ponton (2008), on file in Surveyor Office

RECOVERY TIE DRAWING  
Field Book 43 Page No. 47



**A** - Limestone Post

**B** - N 44° W 111.66' to MAG  
nail in 14" power line pole

**C** - N 69° E 33.90' to SE  
corner of house foundation

**D** - S 19° E 57.60' to MAG  
nail in 15" power line pole

Not To Scale  
Compass Bearing Magnetic North

I, Kevin P. Enright, Monroe County Surveyor, hereby certify that this document was prepared under my direction in accordance with the provisions of section 36-2-12-11 of the Indiana Code; and the above data is given under my hand and seal this 19th day of February, 2010.

*Kevin P. Enright*

Administered by the Monroe County Surveyor Review Board

Date: 3/9/2010



Drawn by: T.E.R Print date: March 4, 2010



MOSRB/202dRet



MOSRB/202dRet

Be BI G-23

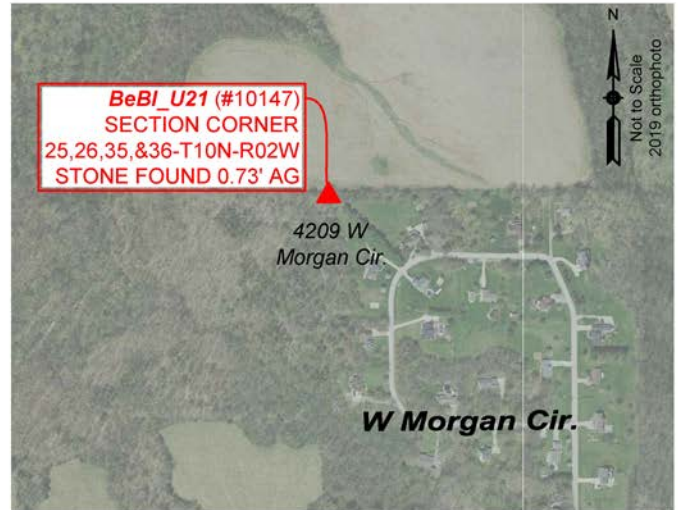
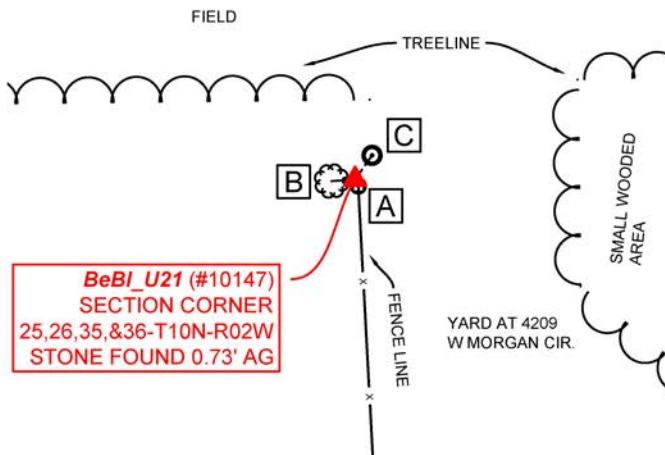
02/19/2010

**PENDING****MONUMENT RECORD**Corner ID: **BeBI\_U21****Section Corner**

Sections 25, 26, 35, & 36- T10N-R02W, 2nd P.M.  
 Bean Blossom Township, Monroe County, Indiana

Section 26 T10N-R02W	Section 25 T10N-R02W
Section 35 T10N-R02W	Section 36 T10N-R02W

**MONUMENT:** Describe monument set or found (Include material type, scribing, distance above/below grade, dimensions.)  
 4" x 4" limestone w 'X' found 0.73' above grade

**MONUMENT LOCATION SKETCH:****WITNESS MONUMENT TIES**

All ties to new Bearing Trees (BTs) are a mag nail set in a 1-1/2" plastic washer stamped "SURVEY MARKER - DO NOT REMOVE" and hack mark at the root crown (less than 12" above ground) perpendicular to the center of the tree, unless otherwise noted. BT diameters are noted as dbh and are measured approximately 4.5' above ground. Bearings are measured from the monument to the center of the BT, distances are measured from the monument to the mag nail.

ID	BEARING	DISTANCE	DESCRIPTION
Witness A	S 27d E	1.1'	Mag nail and washer set 0.9' above grade on the east side of a 7" round fence post with a south running woven wire fence line. A "Protect Nearby Survey Marker" sign was set on the post 4.2' above grade facing east.
Witness B	S 86d W	3.7'	Mag nail and washer set in hack 1.0' above grade on the south side of an 11" maple
Witness C	N 35d E	4.6'	1" diameter metal pipe 0.7' above grade leaning northeast per 2004 MCSO tie sheet

**OFFICE OF THE MONROE COUNTY SURVEYOR • Trohn Enright-Randolph**

119 W 7th Street, Bloomington, IN 47404 • 812-349-2570 • surveyoroffice@co.monroe.in.us

Page 1 of 3



**PENDING****MONUMENT RECORD**Corner ID: **BeBI\_U21****Section Corner**

Sections 25, 26, 35, & 36- T10N-R02W, 2nd P.M.  
 Bean Blossom Township, Monroe County, Indiana

Section 26 T10N-R02W	Section 25 T10N-R02W
Section 35 T10N-R02W	Section 36 T10N-R02W

**PHOTO IDENTIFIED:** Photo Date: 12/29/2020

Photo Orientation &amp; Description: BeBI\_U21 from above



Photo Orientation &amp; Description: Looking west at BeBI\_U21



Photo Orientation &amp; Description: Looking east at BeBI\_U21



Photo Orientation &amp; Description: Looking north at BeBI\_U21



Photo Orientation &amp; Description: Looking south at BeBI\_U21

**OFFICE OF THE MONROE COUNTY SURVEYOR • Trohn Enright-Randolph**

119 W 7th Street, Bloomington, IN 47404 • 812-349-2570 • surveyoroffice@co.monroe.in.us

Page 2 of 3



**MONUMENT RECORD**Corner ID: **BeBI\_U21****Section Corner**

Sections 25, 26, 35, & 36- T10N-R02W, 2nd P.M.  
 Bean Blossom Township, Monroe County, Indiana

Section 26 T10N-R02W	Section 25 T10N-R02W
Section 35 T10N-R02W	Section 36 T10N-R02W

**ORIGINAL OR SUBSEQUENT SURVEY EVIDENCE FOUND:** *Include, search area or areas, search procedure, etc.*

*Date of Field work/Search:* 12/29/2020 *By:* CAR *Monument Found:* Stone *BTs or Reference Objects Found:* 1" diameter pipe found per 2004 MCSO tie sheet, old "Protect Nearby Survey Marker" sign found. *Project #:* BeBI\_Stones *Field Book:* 54/19 *Equipment:* The basis of bearings is Grid North System NAD83(2011)/Indiana West NAVD 88, Epoch 2010.0000, geoid12b\_conus.db3, US Survey Feet, derived from GPS observations utilizing the Indiana Real-Time Network (INCORS). Coordinate data was collected with a Javad Triumph LS Network Rover. Coordinates are available upon request. Distances to witness ties were collected with a Leica Disto laser distance meter. Bearings to witness ties were collected with the internal magnetic compass of the Javad Triumph LS and were automatically adjusted to grid north and are approximately shown hereon for reference. Priority should be given to provided distances over bearings. *Notes:* The old survey marker sign that was previously set was found and replaced.

**OTHER EVIDENCE:** *Describe corner location relative to nearby features and how to reach the corner location – note fences, roads, timber cutting lines, mow lines, clearings, plantings, streams, topo changes, etc.*

The stone is located at the end of a south running woven wire fence line in the backyard of 4209 W Morgan Circle. There is a maple tree to the north of the stone, and then a huge open field north of that. There is a wooded area to the west, and a clearing in the yard to the east. The metal pipe witness is very obviously sticking out of the ground and wrapped with orange flagging, as well as the a MCSO survey sign facing east and clearly visible.

**MONUMENT PRESERVATION:** *Describe work done to preserve existing monument.*

Collected new coordinates, tried to locate old witnesses but had no luck aside from the iron metal pipe. I took new witnesses, wrapped the monument in orange flagging, and flagged witness. A new "Protect Nearby Survey Marker" sign was set as noted in the witness table.

**THEORY OF LOCATION:** *Describe the theory of location for acceptance of this monument. Include monument origin and associated uncertainty.*

The Limestone with "X" was set replacing a Steel Fence Post and the Monument Record prepared under the direction of the Monroe County Surveyor, Michael Friley, on March, 1996. The 1996 Monument Record accepted the Limestone with "X". The Limestone with "X" was witnessed and Monument Record prepared by Indiana Register Land Surveyor No. S0559, Ben Bledsoe, on January, 2004.

**CERTIFICATION:****OFFICE OF THE MONROE COUNTY SURVEYOR • Trohn Enright-Randolph**

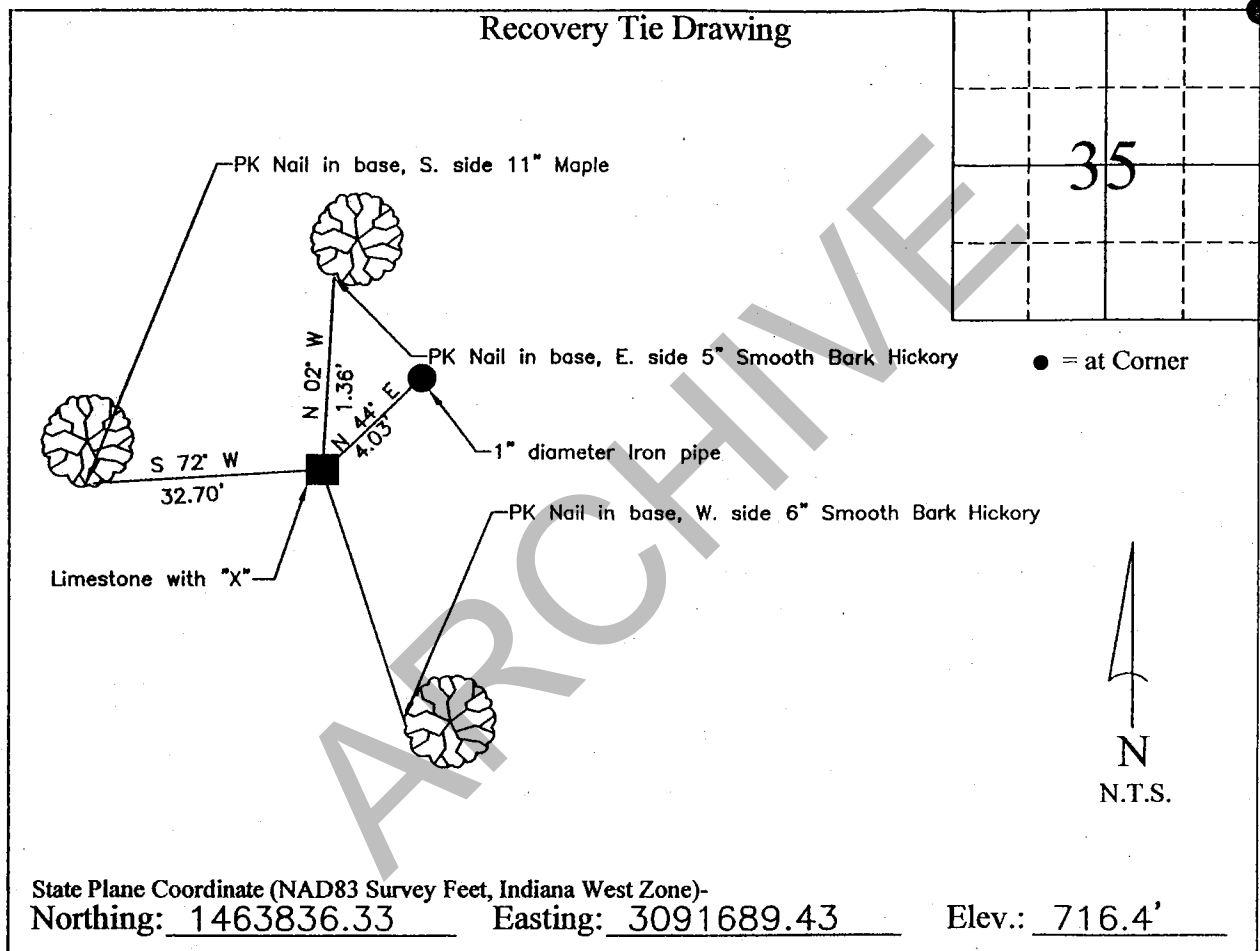
119 W 7th Street, Bloomington, IN 47404 • 812-349-2570 • surveyoroffice@co.monroe.in.us

Page 3 of 3

Corner I.D. # U-21

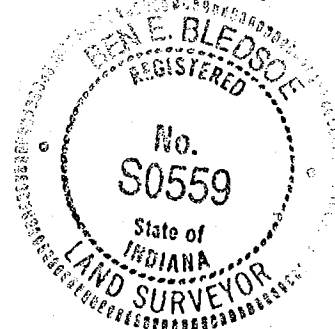
MONUMENT RECORD

STATE OF INDIANA ~ COUNTY OF MONROE

Section 35, Township 10 North, Range 2 West,Monument Description & Remarks: Replaced steel fence post at NE corner of section with Limestone. Stone marked with faint "X".

I, Ben E. Bledsoe, Registered Land Surveyor, here by certify that this document was prepared under my direction in accordance with the provisions of Section 17-3-64-4 through 17-3-64-8 of the Indiana Code, being Acts of 1965, Chapter 319; this 6th day of January, 2004 A.D.

Indiana Registered Land Surveyor No. S0559



# MONUMENT RECORD

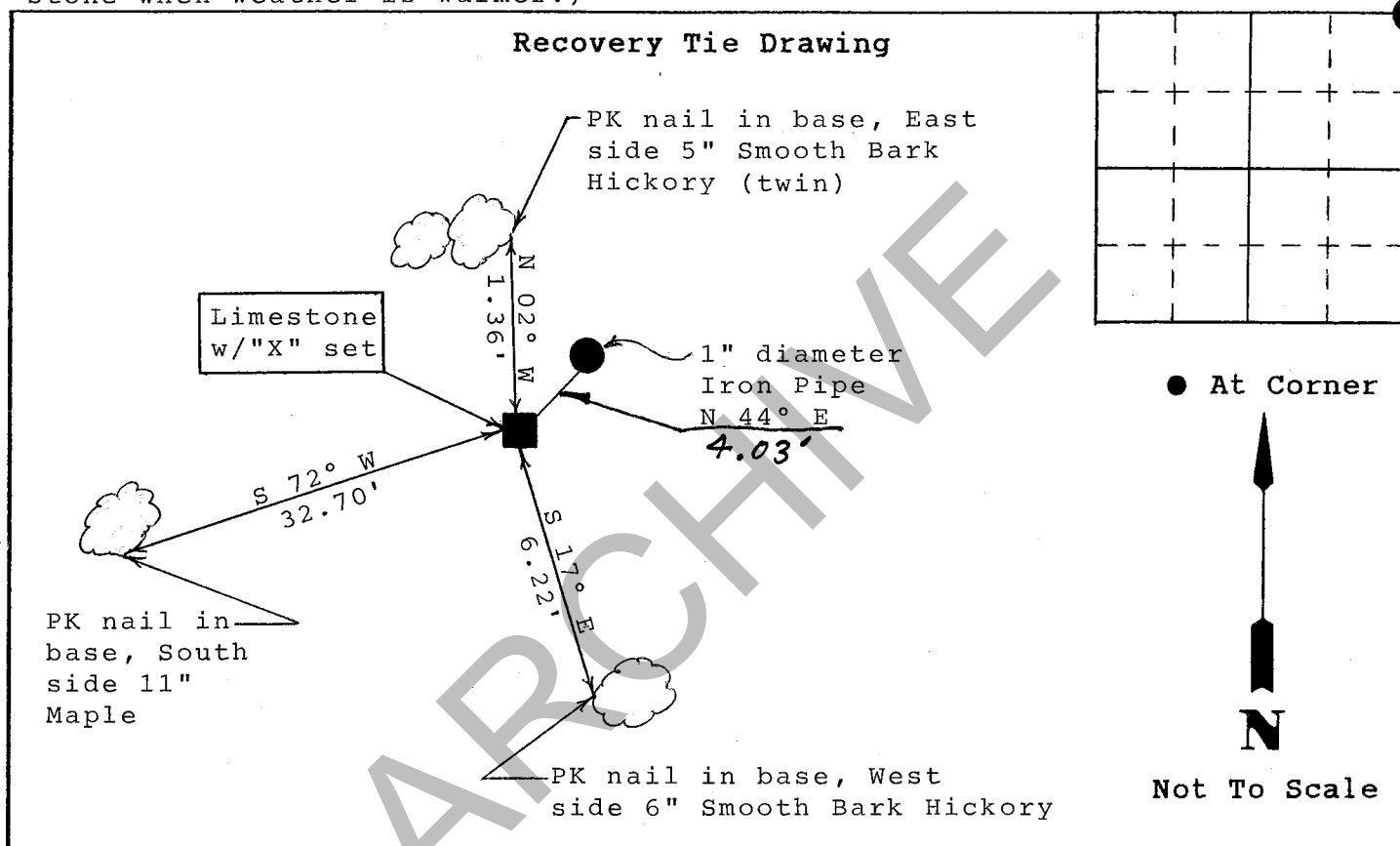
Corner I.D. #

U-21

STATE OF INDIANA - COUNTY OF MONROE

Section Thirty-five, 35, Township 10 North, Range 2 West

**Monument Description & Remarks:** Replaced steel fence post at NE corner of  
section w/Limestone. Stone marked w/faint "X". (Will set brass cap in  
stone when weather is warmer.)



State of Indiana  
 County of Monroe

Space  
 Reserved For  
 Recording  
 Officer

I, Michael W. Friley, County Surveyor, hereby certify  
 that this document was prepared under my direction in  
 accordance with the provisions of Section 17-3-64-4  
 through 17-3-64-8 of the Indiana Code, being Acts of 1965,  
 Chapter 319; and the above data is given under my hand and  
 seal this 11th day of March, 1996 A.D.

Indiana Registered Land Surveyor No. \_\_\_\_\_ or

Monroe County Surveyor's Office  
 United States Government Agency

Monroe County Surveyor  
 Title

Field Book:

96-01

Page:

31

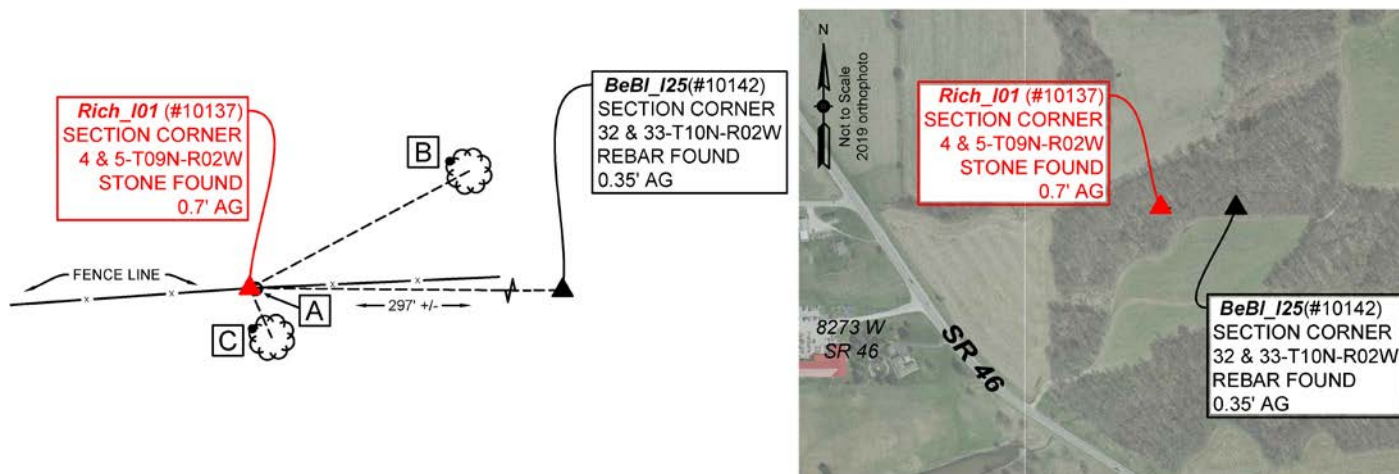


**PENDING****MONUMENT RECORD**Corner ID: **Rich\_I01****Section Corner**

Sections 4 & 5- T09N-R02W, 2nd P.M.  
Richland Township, Monroe County, Indiana

Section 32 T10N-R02W	Section 33 T10N-R02W
Section 05 T09N-R02W	Section 04 T09N-R02W

**MONUMENT:** Describe monument set or found (Include material type, scribing, distance above/below grade, dimensions.)  
0.6 x 0.7 limestone with very faint 'X' found 0.7' above grade

**MONUMENT LOCATION SKETCH:****WITNESS MONUMENT TIES**

All ties to new Bearing Trees (BTs) are a mag nail set in a 1-1/2" plastic washer stamped "SURVEY MARKER - DO NOT REMOVE" and hack mark at the root crown (less than 12" above ground) perpendicular to the center of the tree, unless otherwise noted. BT diameters are noted as dbh and are measured approximately 4.5' above ground. Bearings are measured from the monument to the center of the BT, distances are measured from the monument to the mag nail.

ID	BEARING	DISTANCE	DESCRIPTION
Witness A	S 83d E	1.0'	8" X 10" and 2.9' tall limestone post
Witness B	N 62d E	42.0'	Mag nail and washer set in hack 1.0' above grade in the northwest side of a 15" red oak
Witness C	S 24d E	9.1'	Mag and washer set in scar with old mag nail per 2010 Monroe County Surveyor tie sheet 1.4' above grade in the northwest side of a 19" shagbark hickory

**MONUMENT ACCESSORIES**

Other survey grade monuments that were located in the vicinity and their relation to the monument. Geodetic coordinates in this table are provided in the format Easting, Northing.

(#10142)	S 89d29'59" E	296.95'	$\frac{5}{8}$ " rebar found 0.35' above grade wrapped in pink flagging with no cap
----------	---------------	---------	--



**OFFICE OF THE MONROE COUNTY SURVEYOR • Trohn Enright-Randolph**

119 W 7th Street, Bloomington, IN 47404 • 812-349-2570 • surveyoroffice@co.monroe.in.us

Page 1 of 3

**PENDING****MONUMENT RECORD**Corner ID: **Rich\_I01****Section Corner**

Sections 4 & 5- T09N-R02W, 2nd P.M.  
 Richland Township, Monroe County, Indiana

Section 32 T10N-R02W	Section 33 T10N-R02W
Section 05 T09N-R02W	Section 04 T09N-R02W

**PHOTO IDENTIFIED:** Photo Date: 12/09/2020

Photo Orientation &amp; Description: Rich\_I01 from above



Photo Orientation &amp; Description: Looking south at Rich\_I01



Photo Orientation &amp; Description: Looking west at Rich\_I01



Photo Orientation &amp; Description: Looking east at Rich\_I01

**ORIGINAL OR SUBSEQUENT SURVEY EVIDENCE FOUND:** *Include, search area or areas, search procedure, etc.*

Date of Field work/Search: 12/09/2020 By: CAR Monument Found: Stone BT's or Reference Objects Found: All ties found per 2010 Monroe County Surveyor monument record. Project #: BeBl Stones Field Book: 54/18 Equipment: The basis of bearings is Grid North System NAD83(2011)/Indiana West NAVD 88, Epoch 2010.0000, geoid12b\_conus.db3, US Survey Feet, derived from GPS observations utilizing the Indiana Real-Time Network (INCORS). Coordinate data was collected with a Javad Triumph LS Network Rover. Coordinates are available upon request. Distances to witness ties were collected with a Leica Disto laser distance meter. Bearings to witness ties were collected with the internal magnetic compass of the Javad Triumph LS and were automatically adjusted to grid north and are approximately shown hereon for reference. Priority should be given to provided distances over bearings. Notes: Photos of all witnesses are on file in the Monroe County Surveyor's Office. The mag nail witness per 2010 MCSO tie sheet was found using a metal detector 1.4' above grade in a visible scar on the northwest side of a 19" shagbark hickory.

**OTHER EVIDENCE:** *Describe corner location relative to nearby features and how to reach the corner location – note fences, roads, timber cutting lines, mow lines, clearings, plantings, streams, topo changes, etc.*

The monument is located along an east/west running fence with a lot of downed trees fallen along the fence. There was a Monroe County "Protect Nearby Survey Marker" sign found per 2010 Monroe Co Surveyors tie sheet set 3.7' above grade facing north, attached to a t-post in the east/west fence line. A 5/8" rebar at BeBl\_I25 is 297' +/- east of the stone.

**MONUMENT PRESERVATION:** *Describe work done to preserve existing monument.*

Set new witnesses and collected new coordinates. Tied orange flagging around the stone and flagged witnesses.

**OFFICE OF THE MONROE COUNTY SURVEYOR • Trohn Enright-Randolph**

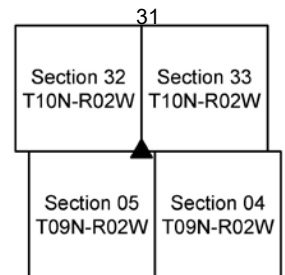
119 W 7th Street, Bloomington, IN 47404 • 812-349-2570 • surveyoroffice@co.monroe.in.us

Page 2 of 3



**MONUMENT RECORD**Corner ID: **Rich\_I01****Section Corner**

Sections 4 & 5- T09N-R02W, 2nd P.M.  
Richland Township, Monroe County, Indiana



**THEORY OF LOCATION:** *Describe the theory of location for acceptance of this monument. Include monument origin and associated uncertainty.*  
The Limestone 0.4'x0.7'x0.6' with faint "X" was previously witnessed and Monument Record prepared under the direction of the Monroe County Surveyor, Edmund O. Farkas, on March 14, 1985. The 1985 Monument Record accepted the Limestone 0.4'x0.7'x0.6' with faint "X". The Limestone 0.66'x0.7'x0.87' with faint "X" witnessed and the Monument Record prepared under the direction of the Monroe County Surveyor, Kevin Enright, on February 26, 2010 and accepted by the Monroe County Surveyor Review Board on March 09, 2010. The 2010 Monument Record accepted the Limestone 0.66'x0.7'x0.87' with faint "X" per a 2003 MSC Realty LLC survey Douglas Curry on file in Surveyor Office.

**CERTIFICATION:**

DRAFT

**OFFICE OF THE MONROE COUNTY SURVEYOR • Trohn Enright-Randolph**

119 W 7th Street, Bloomington, IN 47404 • 812-349-2570 • surveyoroffice@co.monroe.in.us

Page 3 of 3



# MONUMENT RECORD

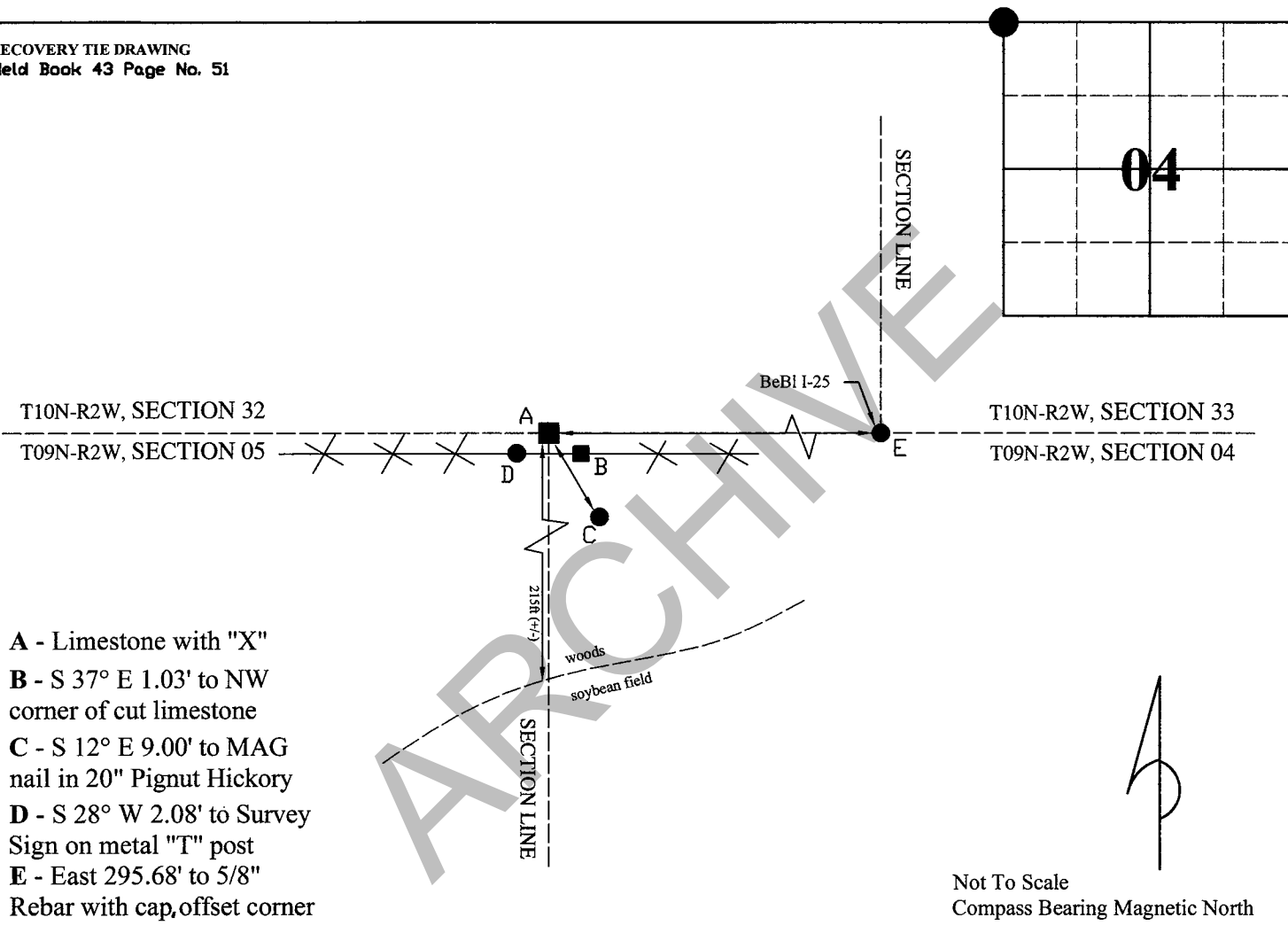
## State of Indiana - County of Monroe

**Section:** 04**Township:** 9 North**Range:** 2 West**Corner ID:** Rich I-01

**Monument Description & Remarks:** Limestone with faint "X", length 0.66ft, width 0.70ft, height 0.87ft. Survey Sign 4.5ft above ground at pt. D

**References On File:** Edmund O. Farkas recovery tie drawing, Monument Record (1985), and Douglas R. Curry survey, MSC Realty LLC (2003), on file in Surveyor Office

RECOVERY TIE DRAWING  
Field Book 43 Page No. 51



I, Kevin P. Enright, Monroe County Surveyor, hereby certify that this document was prepared under my direction in accordance with the provisions of section 36-2-12-11 of the Indiana Code; and the above data is given under my hand and seal this 26th day of February, 2010.

*Kevin P. Enright*

Administered by the Monroe County Surveyor Review Board

Date: 3/9/2010



Drawn by: T.E.R Print date: March 4, 2010

## MONUMENT RECORD

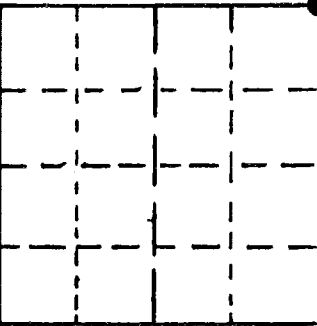
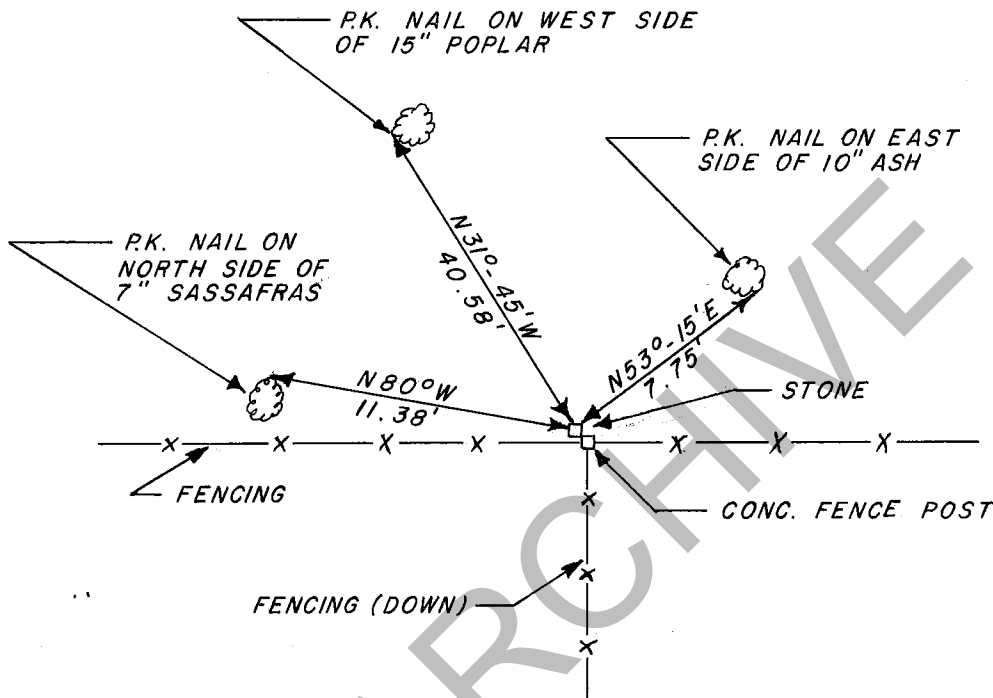
STATE OF INDIANA - COUNTY OF MONROE

SECTION 5, TOWNSHIP 9 NORTH, RANGE 2 WEST

## MONUMENT DESCRIPTION &amp; REMARKS

FOUND LIMESTONE STONE WITH FAINT CHISELED "X" ON TOP, STONE  
IS SOLID IN GROUND AND IS 0.40' X 0.70' X 0.60' OUT OF THE  
GROUND.

## RECOVERY TIE DRAWING



(●) AT CORNER



NOT TO SCALE

STATE OF INDIANA

COUNTY OF MONROE

I, EDMUND O. FARKAS HEREBY CERTIFY THAT THIS  
DOCUMENT WAS PREPARED UNDER MY DIRECTION IN ACCORDANCE  
WITH THE PROVISIONS OF SECTION 17-3-64-4 - 17-3-64-8 OF  
THE INDIANA CODE, BEING ACTS OF 1965, CHAPTER 319; AND  
THE ABOVE DATA IS GIVEN UNDER MY HAND AND SEAL  
THIS 14TH DAY OF MARCH, 19 85 A.D.

SPACE  
RESERVED  
FOR  
RECORDING  
OFFICER.

INDIANA REGISTERED LAND SURVEYOR NO. \_\_\_\_\_

OR \_\_\_\_\_

UNITED STATES GOVERNMENT AGENCY

TOWNSHIP:  
RICHLAND

CORNER I.D.

I-1

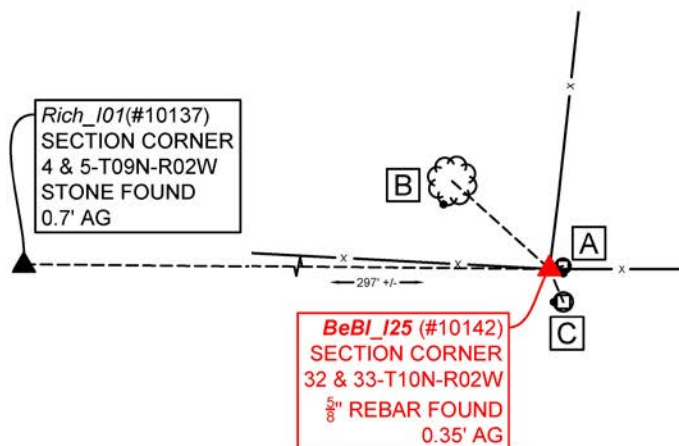
TITLE

**PENDING****MONUMENT RECORD**Corner ID: **BeB\_I25****Section Corner**

Sections 32 & 33- T10N-R02W, 2nd P.M.  
 Bean Blossom Township, Monroe County, Indiana

Section 32  
T10N-R02WSection 33  
T10N-R02WSection 05  
T09N-R02WSection 04  
T09N-R02W

**MONUMENT:** Describe monument set or found (Include material type, scribing, distance above/below grade, dimensions.)  
 5/8" rebar found 0.35' above grade wrapped in pink flagging, with no cap found.

**MONUMENT LOCATION SKETCH:****WITNESS MONUMENT TIES**

All ties to new Bearing Trees (BTs) are a mag nail set in a 1-1/2" plastic washer stamped "SURVEY MARKER - DO NOT REMOVE" and hack mark at the root crown (less than 12" above ground) perpendicular to the center of the tree, unless otherwise noted. BT diameters are noted as dbh and are measured approximately 4.5' above ground. Bearings are measured from the monument to the center of the BT, distances are measured from the monument to the mag nail.

ID	BEARING	DISTANCE	DESCRIPTION
Witness A	N 78d E	2.9'	Mag nail set 0.9' above grade on the south side of a 7" round wooden post in north running fence with a Monroe County "Protect Nearby Survey Marker" sign found 3.88' above grade facing west.
Witness B	N 48d W	27.5'	Mag nail and washer set in hack 0.9' above grade in the southwest side of a 6" beech tree
Witness C	S 23d E	7.5'	Mag and washer set 0.8' above grade on the west side of an 11" tree trunk serving as a fence post with east/west/north running fence wrapped around it.

**MONUMENT ACCESSORIES**

Other survey grade monuments that were located in the vicinity and their relation to the monument. Geodetic coordinates in this table are provided in the format Easting, Northing.

(#10137)	N 89d26'54" W	296.58'	0.6 x 0.7 limestone with very faint 'X' 0.7' above grade
----------	---------------	---------	--

**PHOTO IDENTIFIED:** Photo Date: 12/09/2020**OFFICE OF THE MONROE COUNTY SURVEYOR • Trohn Enright-Randolph**

119 W 7th Street, Bloomington, IN 47404 • 812-349-2570 • surveyoroffice@co.monroe.in.us

Page 1 of 3



**PENDING****MONUMENT RECORD**Corner ID: **BeB\_I25****Section Corner**

Sections 32 & 33- T10N-R02W, 2nd P.M.  
 Bean Blossom Township, Monroe County, Indiana

Section 32  
T10N-R02WSection 33  
T10N-R02WSection 05  
T09N-R02WSection 04  
T09N-R02W

Photo Orientation &amp; Description: BeBI\_I25 from above



Photo Orientation &amp; Description: Looking east at BeBI\_I25



Photo Orientation &amp; Description: Looking south at BeBI\_I25



Photo Orientation &amp; Description: Looking north at BeBI\_I25

**ORIGINAL OR SUBSEQUENT SURVEY EVIDENCE FOUND:** *Include, search area or areas, search procedure, etc.*

Date of Field work/Search: 12/09/2020 By: CAR Monument Found: Rebar BTs or Reference Objects Found: Wooden post and "Protect Nearby Survey Marker" sign were found per 2010 MCSO monument record. The mag nail was not found. Project #: BeBI Stones Field Book: 54/18 Equipment: The basis of bearings is Grid North System NAD83(2011)/Indiana West NAVD 88, Epoch 2010.0000, geoid12b\_conus.db3, US Survey Feet, derived from GPS observations utilizing the Indiana Real-Time Network (INCORS). Coordinate data was collected with a Javad Triumph LS Network Rover. Coordinates are available upon request. Distances to witness ties were collected with a Leica Disto laser distance meter. Bearings to witness ties were collected with the internal magnetic compass of the Javad Triumph LS and were automatically adjusted to grid north and are approximately shown hereon for reference. Priority should be given to provided distances over bearings. Notes: Photos of witnesses are on file in the Monroe County Surveyors Office.

**OTHER EVIDENCE:** *Describe corner location relative to nearby features and how to reach the corner location – note fences, roads, timber cutting lines, mow lines, clearings, plantings, streams, topo changes, etc.*

The monument is northwest of a north/east/west fenceline, 2.9' +/- from the fence. There is a Monroe County "Protect Nearby Survey Marker" sign on the west side of a 7" round wooden post 3.88' above grade facing west. There is a treeline/field south of the monument/fenceline.

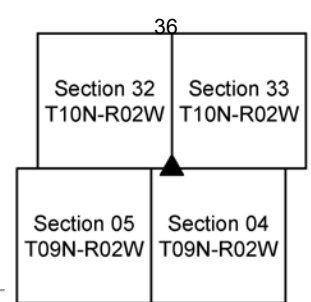
**MONUMENT PRESERVATION:** *Describe work done to preserve existing monument.***OFFICE OF THE MONROE COUNTY SURVEYOR • Trohn Enright-Randolph**

119 W 7th Street, Bloomington, IN 47404 • 812-349-2570 • surveyorsoffice@co.monroe.in.us

Page 2 of 3

**MONUMENT RECORD**Corner ID: **BeB\_I25****Section Corner**

Sections 32 & 33- T10N-R02W, 2nd P.M.  
 Bean Blossom Township, Monroe County, Indiana



Collected coordinates, took new witnesses, tied orange flagging around the monument and spray painted it orange. Flagged all witnesses.

**THEORY OF LOCATION:** *Describe the theory of location for acceptance of this monument. Include monument origin and associated uncertainty.*  
 The 5/8" Rebar with cap, "BYNUM – FANYO LS 890006" was previously witnessed and the Monument Record prepared under the direction of the Monroe County Surveyor, Kevin Enright, on February 26, 2010 and accepted by the Monroe County Surveyor Review Board on March 09, 2010. The 2010 Monument Record accepted the 5/8" Rebar with cap, "BYNUM – FANYO LS 890006" per a 2003 MSC Realty LLC survey Douglas Curry on file in Surveyor Office.

**CERTIFICATION:**

DRAFT

**OFFICE OF THE MONROE COUNTY SURVEYOR • Trohn Enright-Randolph**

119 W 7th Street, Bloomington, IN 47404 • 812-349-2570 • surveyoroffice@co.monroe.in.us

Page 3 of 3

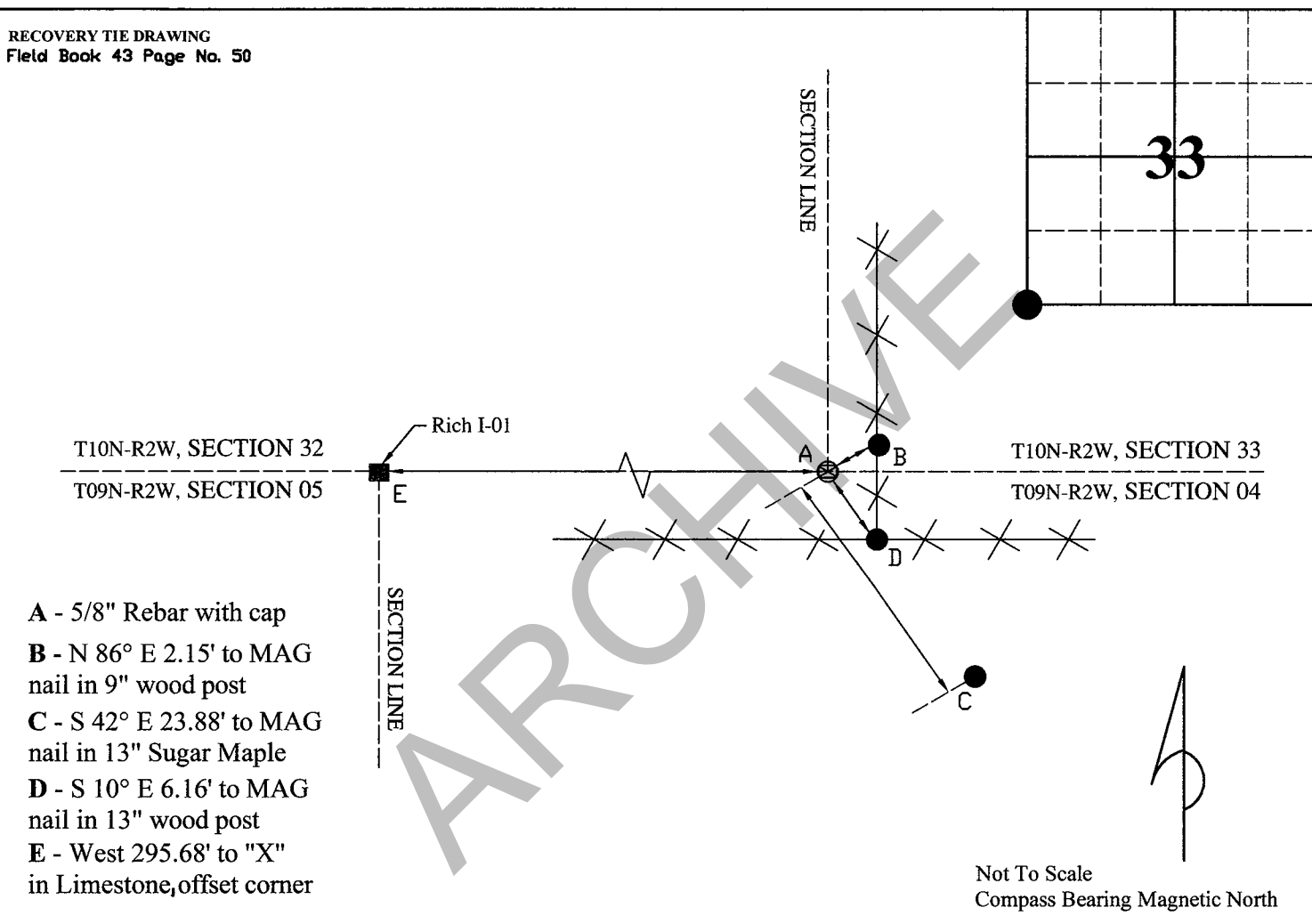
**MONUMENT RECORD**  
State of Indiana - County of Monroe

**Section: 33****Township: 10 North****Range: 2 West****Corner ID: BeBl I-25****Monument Description & Remarks:** 5/8" Rebar with cap, "BYNUM - FANYO LS 890006".

Survey Sign 4.5ft above ground at pt. B

**References On File:** Douglas R. Curry survey, MSC Realty LLC (2003), on file in Surveyor Office

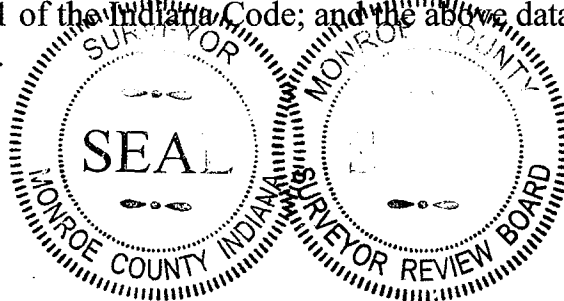
RECOVERY TIE DRAWING  
Field Book 43 Page No. 50



I, Kevin P. Enright, Monroe County Surveyor, hereby certify that this document was prepared under my direction in accordance with the provisions of section 36-2-12-11 of the Indiana Code; and the above data is given under my hand and seal this 26th day of February, 2010.

*Kevin P. Enright*

Administered by the Monroe County Surveyor Review Board

Date: 3/9/2010

Drawn by: T.E.R Print date: March 4, 2010